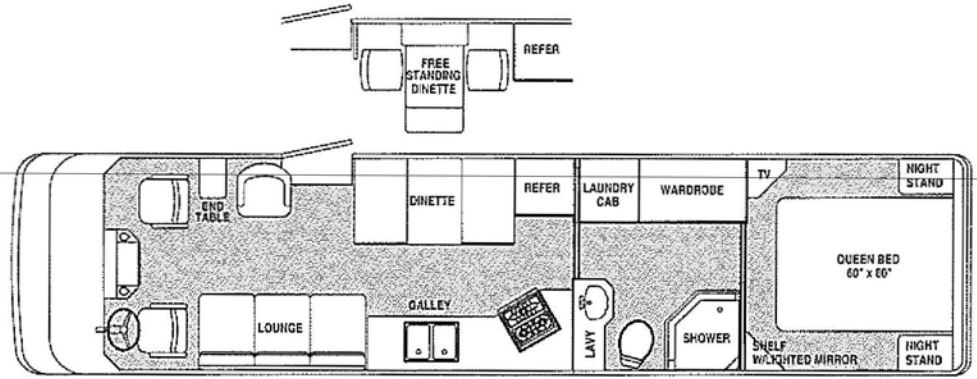
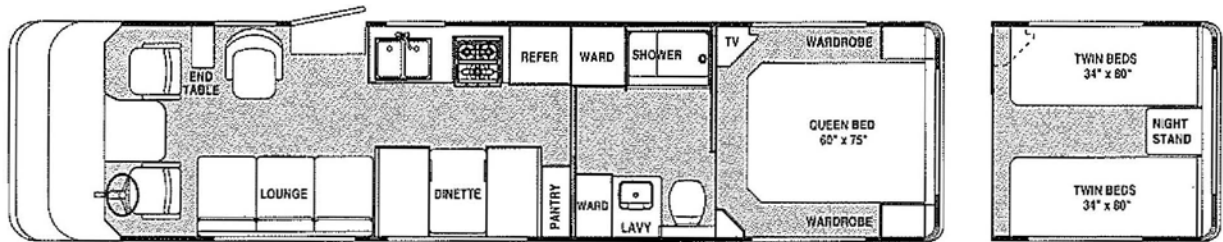


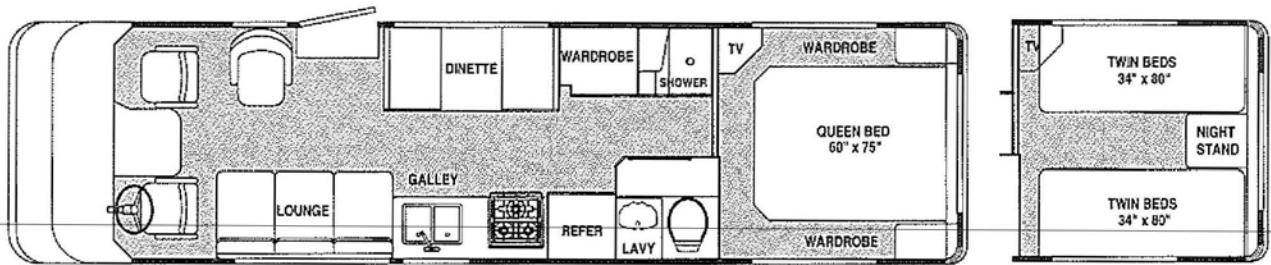
With Airstream's nearly 65 years of experience building vehicles that have become American institutions, you can feel confident your Airstream Land Yacht is designed for truly outstanding livability. Land Yacht floorplans represent the ultimate in space planning for comfort and convenience, with truly impressive storage capacity and many standard features that are expensive options on other motorhomes.



35' Land Yacht Widebody



33' Land Yacht



30' Land Yacht

As a part of Thor Industries, Inc., the second largest manufacturer of recreational vehicles, we have the resources to maintain the standards of engineering and manufacturing excellence that Airstream has set over the years. The result is your assurance of solid value when you invest in a Land Yacht motorhome. See your dealer to see for yourself why you should own a Land Yacht.

If you are in Jackson Center, OH, be sure to take the Airstream factory tour.

For more information call
513-596-6111.

1996 LAND YACHT SPECIFICATIONS	30'	33'	35' WB
CHASSIS	CHEVROLET	CHEVROLET	FREIGHTLINER
ACTUAL LENGTH	31' 2"	33' 5"	35' 10"
WIDTH	95"	95"	101"
EXTERIOR HEIGHT WITH A/C	122"	122"	129"
INTERIOR HEIGHT	79"	79"	80"
GAWR-FRONT (Gross Axle Weight Rating)	5500	5500	8000
GAWR-REAR (Gross Axle Weight Rating)	11,000	11,000	13,500
GVWR (Gross Vehicle Weight Rating)	16,500	16,500	21,500
GCWR (Gross Combined Weight Rating)	20,000	20,000	26,500
UVW (Unloaded Vehicle Weight)	13,240	13,900	18,940
NCC (Net Carrying Capacity)	3260	2600	2560
WHEEL BASE	190"	208"	228"
REAR OVERHANG	129"	138"	124"
FUEL (GAL.)	80	80	80
LPG (POUNDS)	90	105	105
FRESH WATER QUEEN (GAL.)	60	60	60
FRESH WATER TWIN (GAL.)	60	60	NA
GRAY WATER (GAL.)	36	36	70
BLACK WATER (GAL.)	34	29	45
FURNACE BTU	35,000	35,000	35,000
HOT WATER HEATER (GAL.)	6	6	6
EXTERNAL STORAGE (UP TO CU. FT)	70	75	102

Land Yachts