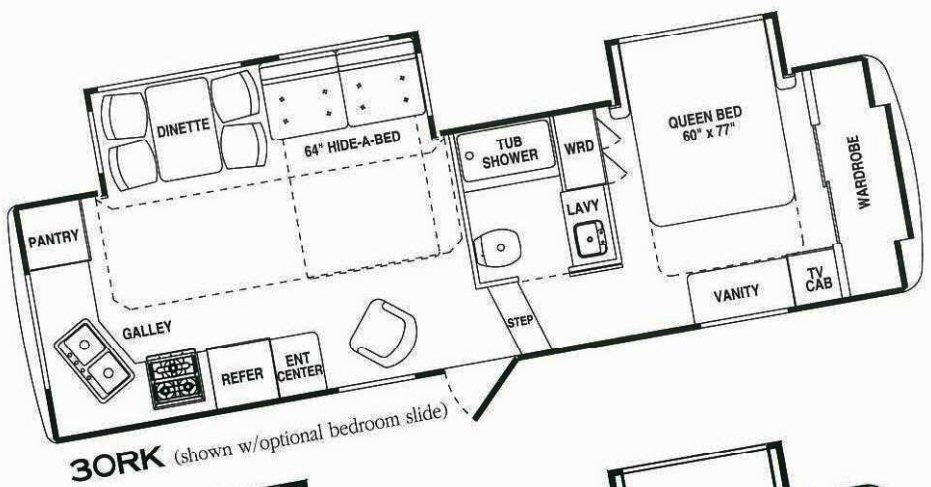


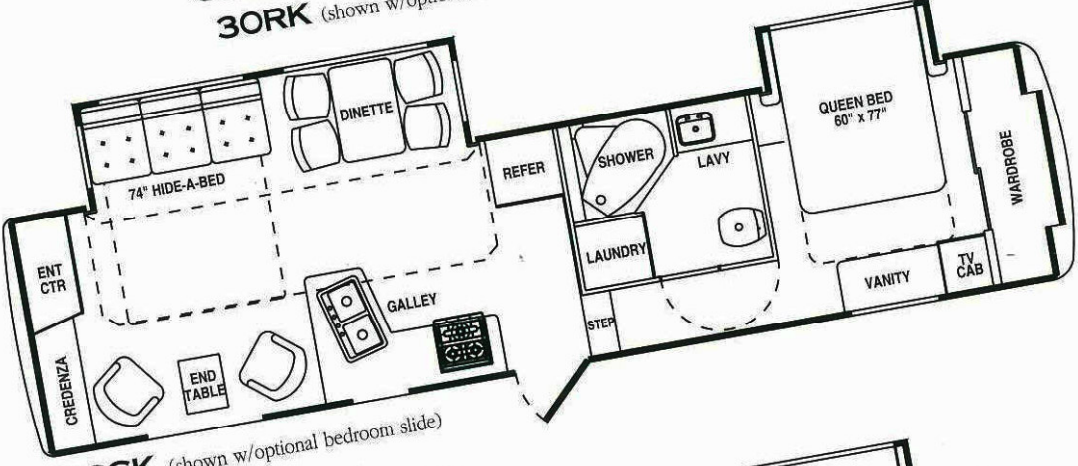
peted exterior storage compart-  
 such as 118 cubic feet of space,  
 ething you'll need and give you  
 The huge pass-through storage  
 s you to load and unload longer



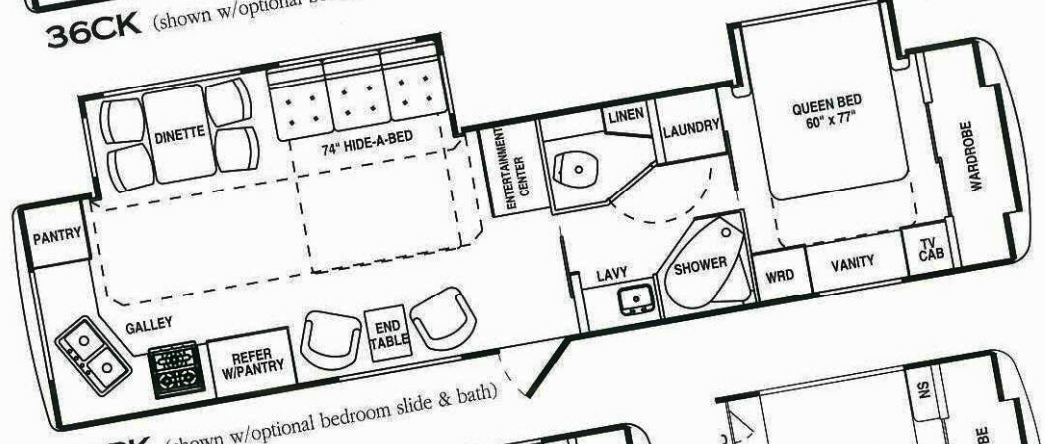
s, lots of drawer  
 een-size bed with



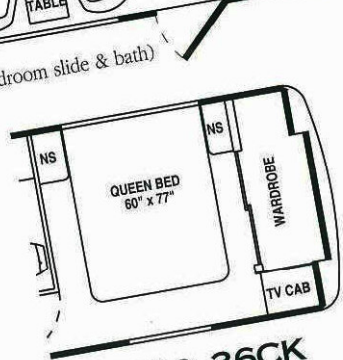
**30RK** (shown w/optional bedroom slide)



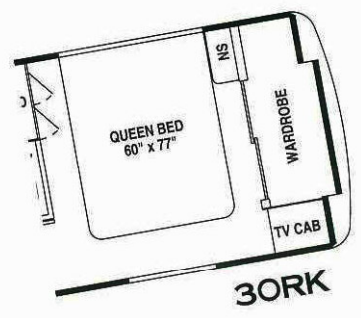
**36CK** (shown w/optional bedroom slide)



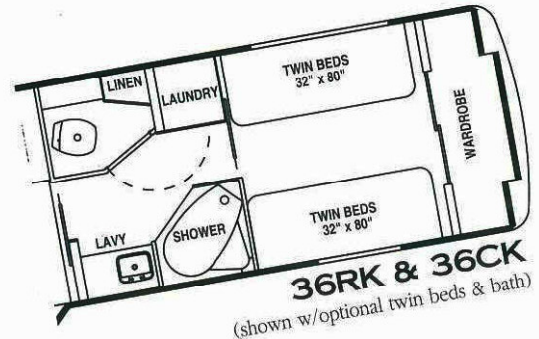
**36RK** (shown w/optional bedroom slide & bath)



**36RK & 36CK**



**30RK**



**36RK & 36CK**  
 (shown w/optional twin beds & bath)

	36' RK	36' CK	30' RK
Length—Exterior	36'4"	36'4"	30'11"
Width—Exterior	101"	101"	101"
Width—Interior	95"	95"	95"
Height—Exterior w/ AC	12'5"	12'5"	12'5"
Height—Interior (Bedroom)	72"	72"	72"
Hitch Weight	2,200	2,200	2,060
GVWR—Gross Vehicle Weight Rating	14,000	14,000	14,000
UVW—Unloaded Vehicle Weight	11,400	TBD	10,850
NCC—Net Carrying Capacity	2600	TBD	3,150
Tire Size	16"	16"	16"
Fresh Water	79 gal.	79 gal.	63
Grey Water	42 gal.	42 gal.	37
Black Water	42 gal.	42 gal.	37
Aux. Gray Water Holding Tank	42 gal.	40 gal.	37
Exterior Storage Volume (cubic feet)	118	118	70