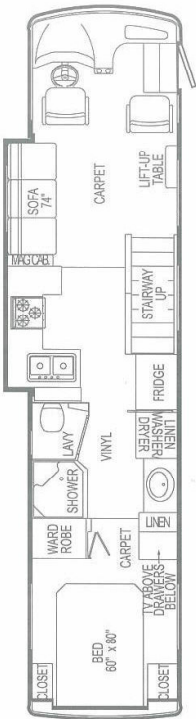
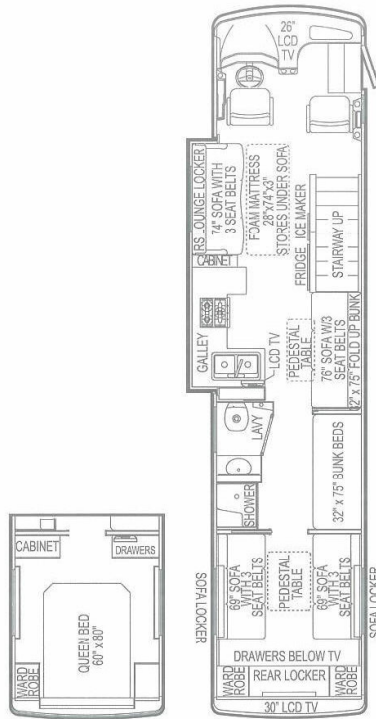


# 2006 AIRSTREAM FLOORPLANS & SPECIFICATIONS

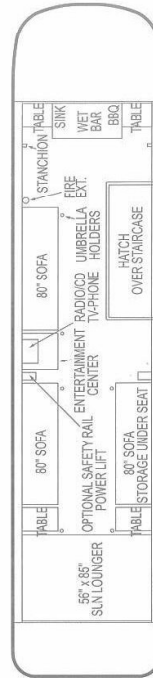
## SKYDECK



SkyDeck 390



SkyDeck 396 Bunk



SkyDeck Upper Level

We've only just begun . . .  
Airstream's motorcoaches come with a variety of exterior paint colors, interior décor and upholstery choices, a selection of entertainment upgrades and more.

Visit [www.airstream.com](http://www.airstream.com) for a full range of options and upgrades, or visit your nearest Airstream dealer for details.

old

### SkyDeck 390

Exterior height with SkyDeck	12'6"
Exterior length	39'
Exterior width	95"
Interior head room	78-1/2"
Interior width	95"
Exterior storage volume (cu. ft.)	154
Freightliner 400 HP Cummins	252" WB
UBW with full fuel tank (lbs)	26,357
NCC without options, fluids or cargo (lbs)	4,643
GVWR (lbs)	32,000
GAWR front (lbs)	12,000
GAWR rear (lbs)	19,000
Seating capacity / sleeping capacity	5 / 4
Fuel tank capacity (gal)	150
Water tank with drain valve	105
Black water tank / gray water tank (gal)	55 / 79
LPG (lbs)	182
Water heater (gal) with electronic ignition	10
Furnace - dual (BTU)	34,000 & 16,000
Fridge (cu. ft.)	10

### SD 390

Exterior height with SkyDeck	12'6"
Exterior length	39'
Exterior width	95"
Interior head room	78-1/2"
Interior width	95"
Exterior storage volume (cu. ft.)	154
Freightliner 400 HP Cummins	252" WB
UBW with full fuel tank (lbs)	26,357
NCC without options, fluids or cargo (lbs)	4,643
GVWR (lbs)	32,000
GAWR front (lbs)	12,000
GAWR rear (lbs)	19,000
Seating capacity / sleeping capacity	5 / 4
Fuel tank capacity (gal)	150
Water tank with drain valve	105
Black water tank / gray water tank (gal)	55 / 79
LPG (lbs)	182
Water heater (gal) with electronic ignition	10
Furnace - dual (BTU)	34,000 & 16,000
Fridge (cu. ft.)	10

### SD 396 Bunk

Exterior height with SkyDeck	12'6"
Exterior length	39'
Exterior width	95"
Interior head room	78-1/2"
Interior width	95"
Exterior storage volume (cu. ft.)	154
Freightliner 400 HP Cummins	252" WB
UBW with full fuel tank (lbs)	26,357
NCC without options, fluids or cargo (lbs)	4,643
GVWR (lbs)	32,000
GAWR front (lbs)	12,000
GAWR rear (lbs)	19,000
Seating capacity / sleeping capacity	11 / 8
Fuel tank capacity (gal)	150
Water tank with drain valve	105
Black water tank / gray water tank (gal)	55 / 79
LPG (lbs)	182
Water heater (gal) with electronic ignition	10
Furnace - dual (BTU)	34,000 & 16,000
Fridge (cu. ft.)	6

Please visit [www.airstream.com](http://www.airstream.com) for a full set of specifications, floorplans, features and options, or visit your nearest Airstream dealer.

**Warning** this information is intended as a guide only. Specifications are subject to change without notice. Weights of individual vehicles may vary. Consult your owner's manual for complete loading, weighing, and towing instructions.

**Vehicle Loading** every effort has been made to provide the greatest number of options for the recreation vehicle owner. Along with these choices comes the responsibility to manage the loads that are imposed by the choices so that they remain within the manufacturer's specified chassis weight limits. Do not overload the recreation vehicle.

**Dry Weights** based on standard features; optional equipment not included. Net Carrying Capacity (NCC) determined by subtracting Unit Base Weight (UBW) from Gross Vehicle Weight Rating (GVWR). Liquid capacities and weights are approximations only.

