

vintageairstream.com

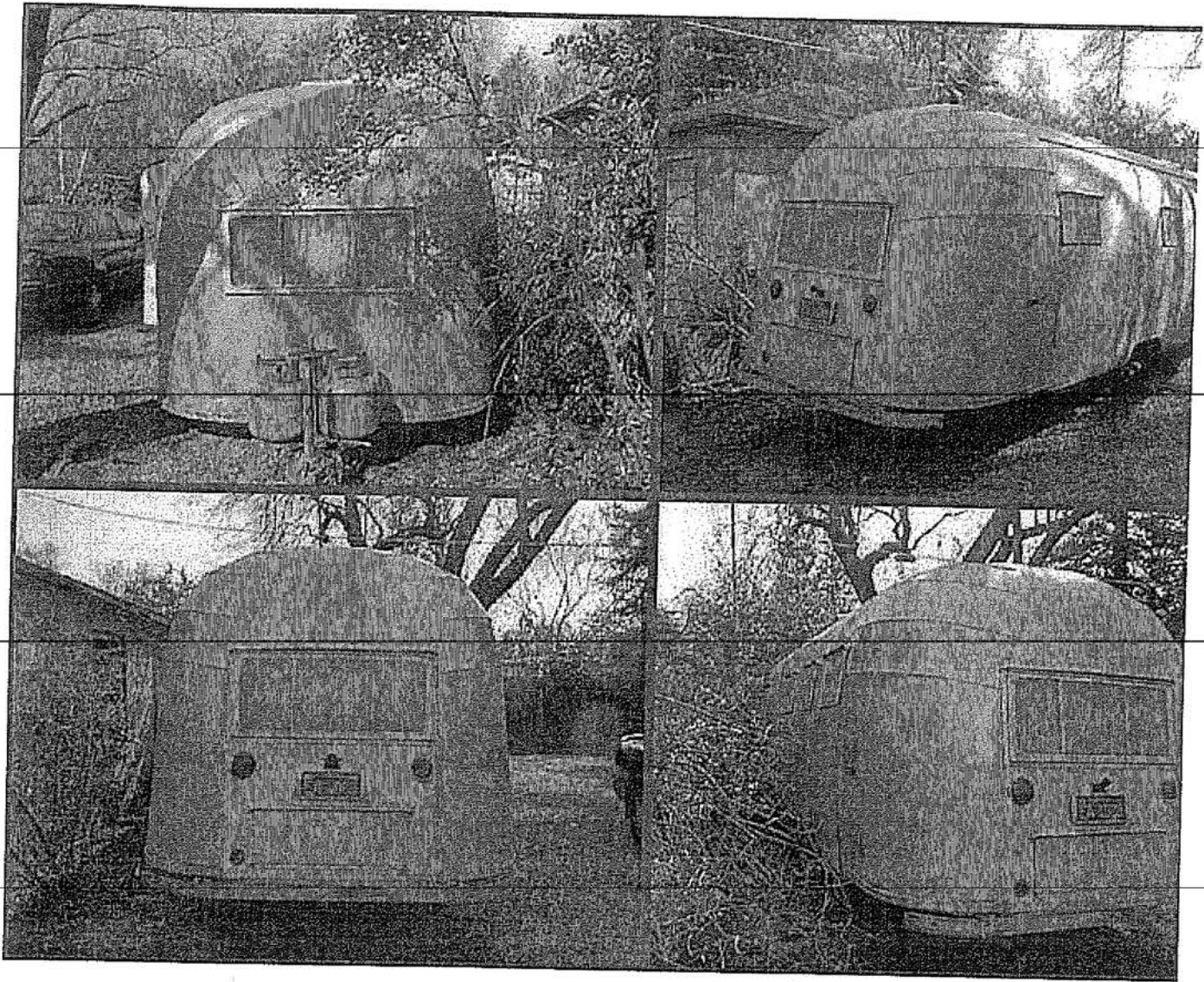
airstream home our '65 caravan
1957 flying cloud restored radios
restoration resources photo archives
dial home page contact

1956 Cruiser & "Overlander" 26'

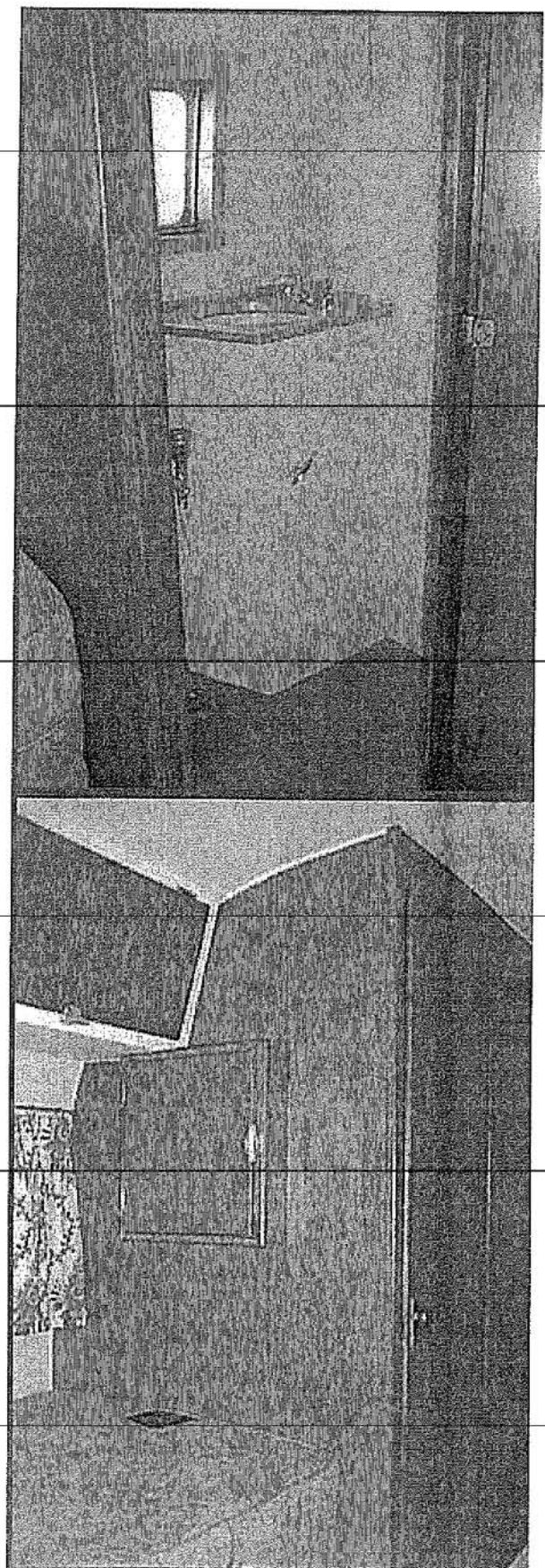
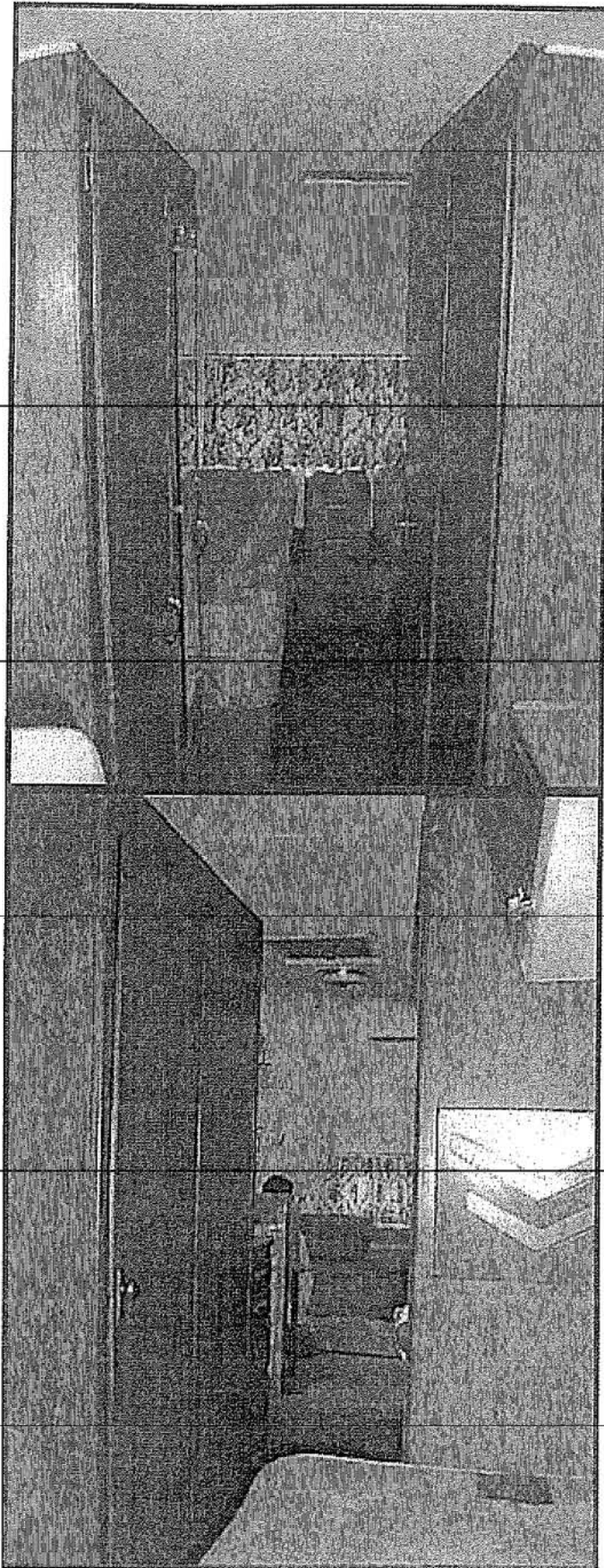
SERIAL #'S → Ohio | O-7145 to O-7358
California | 6NNN

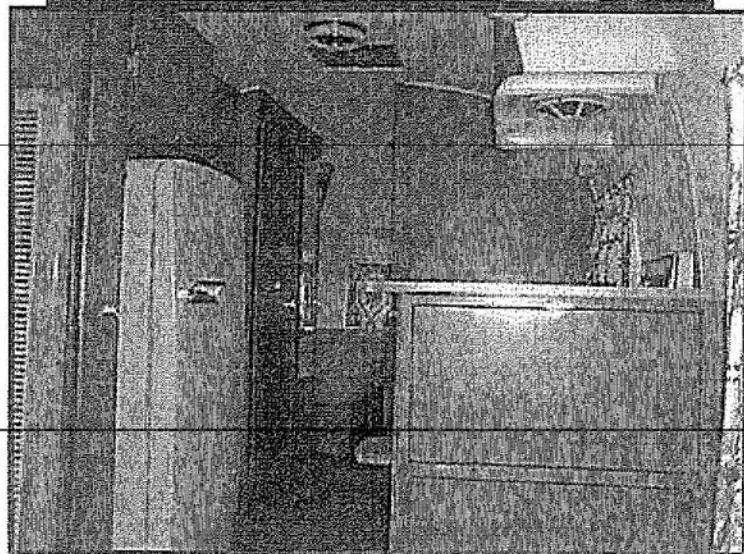
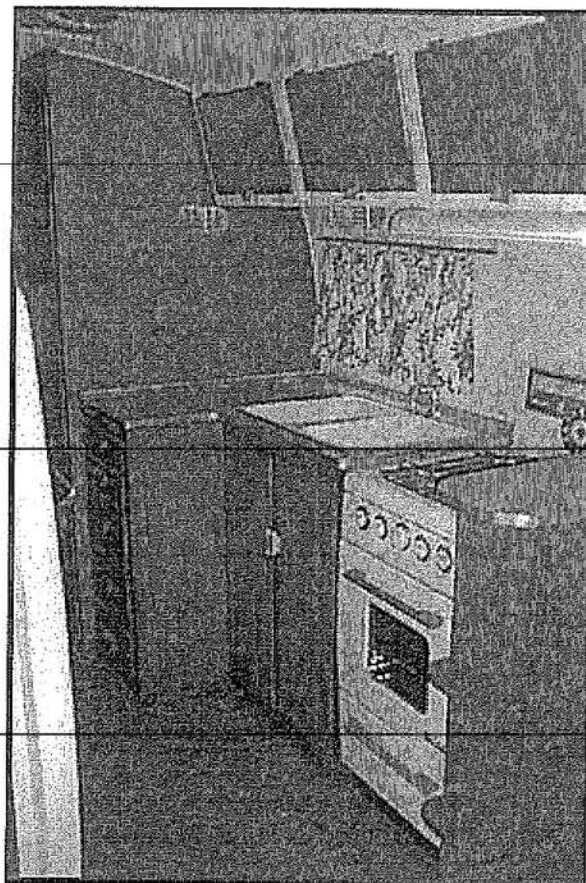
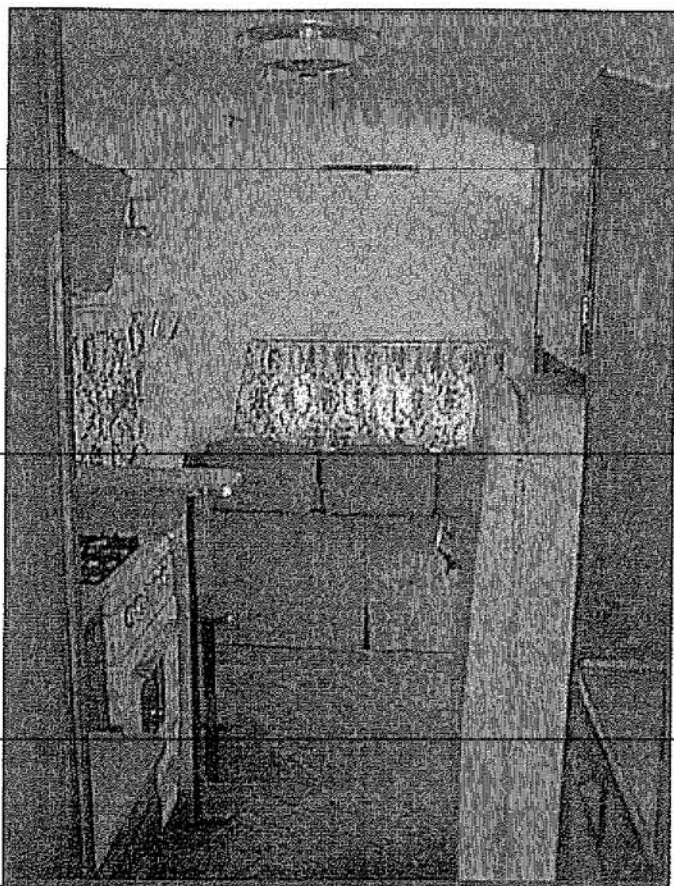


Click Images below to expand to full size

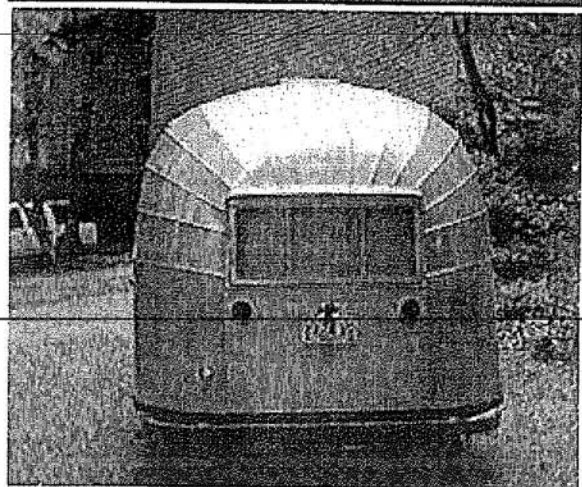
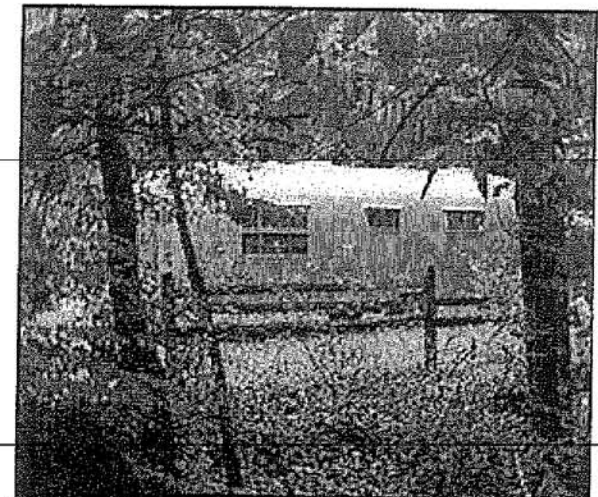


California had the "whale-
tail rear end-cap,
changing over to 7 end-cap
panels next year.

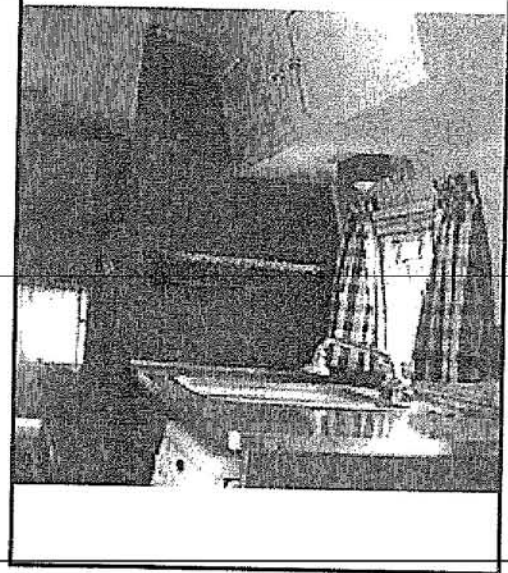
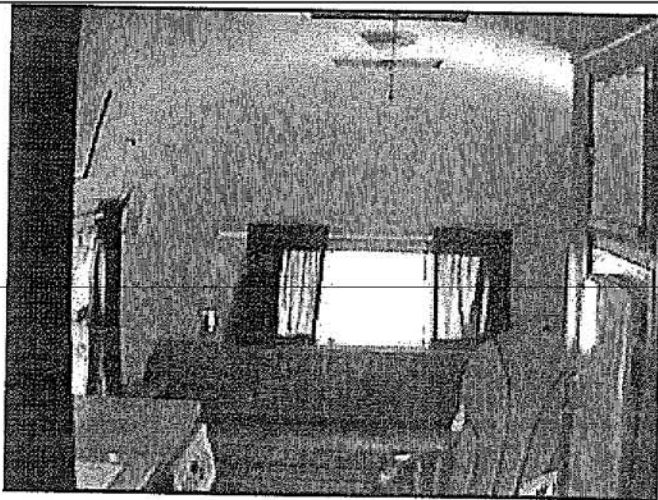
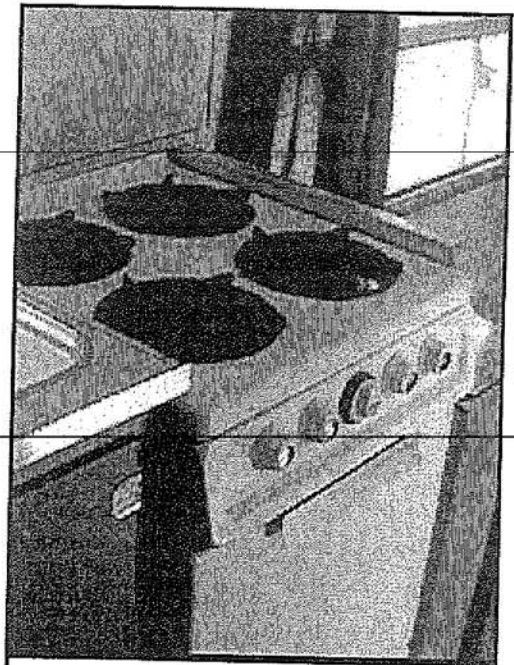
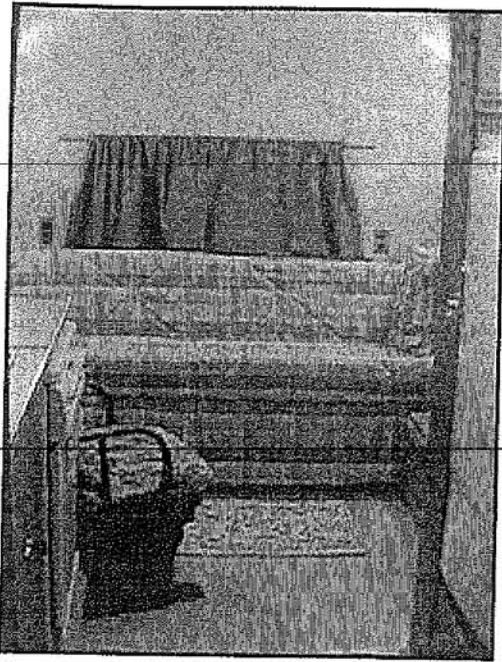




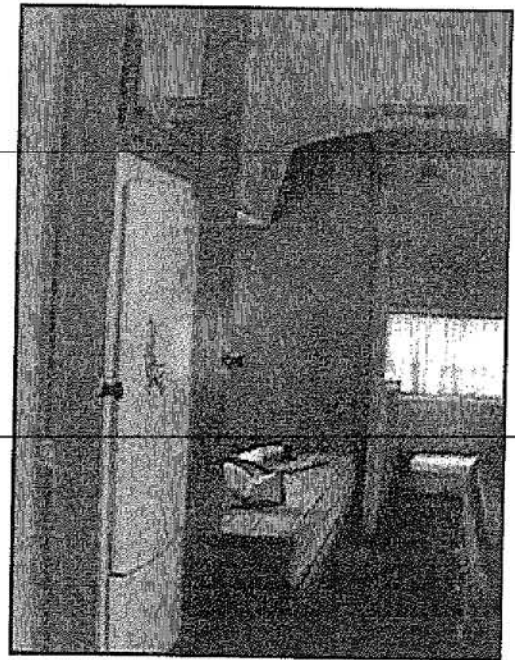
Beautiful, but
lightweight, birch
cabinetry and a PreWay
full size apartment rang
with a large 110v only
refer. The 26 foot Crusie
was designed for more
"over the road" travel,
while the simpler
"Overlander" was designe
for off-road, roughing-i
style camping,



Ohio had the slope back
plain 13 panel end-caps :
the mid 1950's



This example had a Marvel
110v/icebox refer and a
smaller range, typical of
the Overlander.



| [restoration resources](#) | [our 1965 caravel](#) | [vintage airstream home](#) |

| [1956 flying cloud](#) | [vintage photo archives](#) |

| [site map](#) | [radio gallery](#) | [for sale & wanted](#) |

