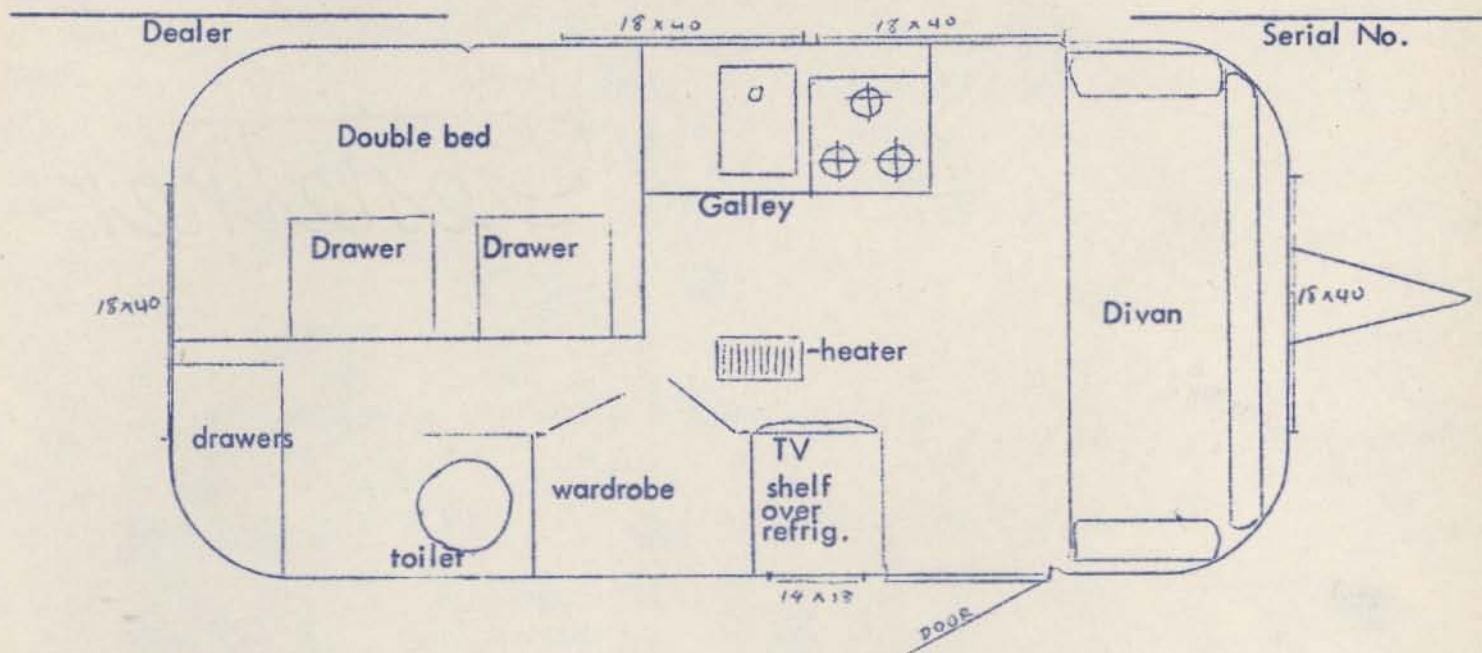


THE 1959 AIRSTREAM PACER



Specifications:

Overall length 18 feet
 Body length 15 ft., 4 in.
 Overall weight 2060 lbs.
 Hitch weight 240 lbs.
 Innerspring rear double bed
 Spring divan in front
 Princess #75 3-burner Range
 4 cu. ft. ice-electric refrigerator
 *Swirl-away toilet
 *Septic tank
 *Pressurized water system
 Single porcelain sink
 48" formica galley top
 Single faucet
 Butane Floor heater
 Linoleum tile floor
 Warp-free hollow core doors

Gaudette type folding table
 Trunk compartment
 8' awning rail
 5 lever full-opening windows
 Curtains
 76" roof locker
 36" spacious wardrobe
 1 full length mirror
 9 drawers
 Bread board
 1 imported "sta-closed door catches
 4 double 110 volt convenience outlets
 Electric brakes
 Steel bumper
 1 12 volt - 110 volt combi ceiling light
 2 110 volt wall lights
 1 Ceiling vent

Shell, insulation, axles, wheels, springs, interior paint, etc. of standard Airstream quality.

Trailer does not include gas bottle and rack or step.

Airstream standard wall paint with harmonized curtains and upholstery.

Airstream lifetime warranty will be effective on the PACER.

No optionals available.

Approx. Delivery Date

Chassis Number