

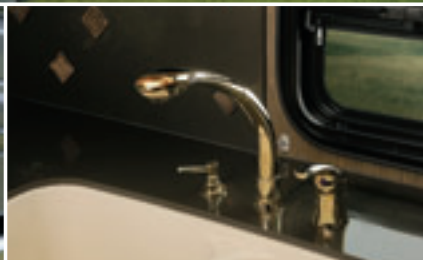


# *American Heritage*

The good life.



AMERICAN HERITAGE-Class A Diesel-2006



THE WORLD IS IN THE  
PALM OF YOUR HANDS AND  
LIFE DOESN'T GET ANY  
BETTER THAN THIS. YOU  
HAVE REACHED THE  
PINNACLE OF ADVENTURE  
AND THE ULTIMATE  
EXPERIENCE IN TRAVEL.  
THIS IS ALL YOURS.  
ENJOY THE RIDE.











American Heritage 45A shown in White Chocolate interior decor with High Gloss Cherry wood finish.

## Welcome Home.

Welcome to the next level of luxurious travel. Your home away from home has never been so opulent, so comfortable or so you. American Heritage is the cream of the crop of the American Coach line boasting unparalleled luxury and comfort. Enjoy stylish leather furniture, an amazing 42" Sony® flat panel high definition monitor with

universal remote, beautiful cabinetry design and craftsmanship for a breathtaking appearance and the most comfortable driving platform imaginable. This incredible coach leaves nothing behind, delivering an exquisite traveling experience for the most remarkable adventures yet to come.



**THE 14 CU. FT. DOMETIC® REFRIGERATOR**  
features an icemaker, plenty of room to store food & beverages and is available in either a brushed aluminum or black glass finish for an elegant look.



**THE WINE RACK & GLASSWARE STORAGE CABINET**  
are new features for '06 and are ideal for storing wine glasses for those evening toasts.



**THE GALLEY**  
comes standard with a large 50/50 Corian® or stainless steel sink for easy clean up, Corian® scratch/stain resistant countertops, a GE Advantium® convection microwave oven for cooking meals in a fraction of the time compared to an oven and marine grade drawer hardware that locks the drawers in place during your travels.



**THE RECESSED COOK TOP**  
(optional) features sealed burners to keep food and grease from getting in those hard to clean places. The burners are recessed beneath the countertop, giving you a level and continuous surface when covered.



**THE DISHWASHER**  
(optional) is a very useful feature to have on the road and is concealed in the galley cabinetry for an unobtrusive look.





## American Heritage

### Suite Surroundings.

Heritage's decadent bedroom suite is designed for comfort and total relaxation. Drift off peacefully day or night on the optional queen-size Senora mattress with radius corners (king bed shown is optional). Heritage is all about luxury with beautiful fabrics, elegant cabinetry detail and

subtle accent lighting underneath the countertops and bedroom valances for an inviting atmosphere. In the bathroom, enjoy elegant, easy to clean Corian® countertops and a residential sized medicine cabinet with mirrored door. It's the traveling experience of your lifetime.



**THE ELEGANT SLIDING GLASS DOOR** separates the sleeping quarters from the rest of the coach for your privacy (available on 45A only).



**THE BEDROOM ENTERTAINMENT CENTER** features a Bose® 3-2-1 home theater system and a 32" Sony® flat panel monitor for the ultimate in entertainment. The digital window feature allows you to view outside conditions on the monitor via a small outdoor camera.

**THE UNIVERSAL HARMONY® REMOTE** comes preprogrammed, making it easy to control all of your entertainment components with only one remote.

**THE SELECT COMFORT CONTROL** (optional) allows you to automatically adjust the firmness of the mattress on either side of the bed with just a push of a button.



**THE SPACIOUS BATHROOM** includes a glass-enclosed shower with skylight, featuring a remarkable curved glass shower door, a shower caddy for shampoo storage, Corian® walls with inlaid design and a residential style fixed shower head. You'll also enjoy a Corian® lavvy countertop with a stainless steel or Corian® sink, a Moen® or Delta® faucet and brass or satin nickel finished bathroom accessories that are tied to the décor chosen.







## American Heritage

### GIRARD ROOF MOUNTED POWER AWNINGS WITH WIND SENSOR

run the full length of each side of the coach, provide protection from the elements and automatically retract in wind over the specified setting (roadside window awnings are available instead of roof mounted awnings).

### A TWO STAGE DUPONT® PAINT PROCESS

is carefully applied to give the exterior a sleek look and beautiful shine. This process ensures only the best in quality and appearance.

### SIDE-HINGED LUGGAGE DOORS

open sideways, providing easy access to stored items. Specially designed hinge pins lock the exterior compartment door in the open position so the doors won't swing shut when you are loading or unloading (most doors).



**FLUSH MOUNTED EXTERIOR WINDOWS** are seamless against the exterior sidewalls for a very sleek look.

**THE TOUCH PAD ENTRY SYSTEM** allows you to easily lock and unlock your vehicle by conveniently punching in an access code.

**THE 30" FRONT ENTRY DOOR WITH DEADBOLT AND PNEUMATIC AIR LOCK** provides a specially designed window to increase visibility. The door also features a pneumatic air lock that reduces noise while driving.

\*Vehicle shown in Horizon Silver.



### THE NORCOLD® EXTERIOR REFRIGERATOR OR FREEZER

(optional) conveniently slides out from the exterior compartment and is a great place to store cold drinks or frozen steaks for your barbecues.

### THE EXTERIOR ENTERTAINMENT CENTER

(optional) features a 23" LCD flat panel monitor that swivels for easy viewing.



### THE LEATHER, FLEXSTEEL® EXTRA WIDE PASSENGER SEAT

(optional) provides even more room to get comfortable on those long cross-country trips featuring 3-point integrated seat belts, lumbar support, electric footrest and a heat/massage feature.



### THE EXTERIOR UTILITY COMPARTMENT

provides a central place to change your whole-coach water filter, empty your holding tanks and access the water sprayer for quick clean-ups.



### THE STYLISH FIBERGLASS REAR CAP

features a two-piece rear ladder, chrome rockguard and high mounted taillights that can easily be seen by others, even if you are towing a vehicle.

**525HP**

**600HP**

**A 525 HORSEPOWER ENGINE** (standard) provides plenty of power for hauling toys or traveling uphill.

**A 600 HORSEPOWER ENGINE** (optional) provides even more power for hill climbing and towing.

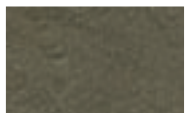


## AMERICAN HERITAGE EXTERIOR/INTERIOR CHOICES.

Mix and match between four interior decor motifs and four wood finishes to create the vehicle that's right for you. Also choose from six dynamic exterior graphic choices, giving Heritage a unique eye appeal that is sure to draw attention on the road.

### VICTORY CIRCLE

#### Living Room/Dining Room



Leather Easy Bed & Love Seat



Sofa Throw Pillows



Dinette Chairs

#### Bedroom



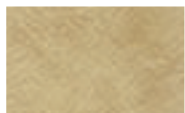
Bedspread & Pillow Shams



Throw Pillows

### WHITE CHOCOLATE

#### Living Room/Dining Room



Leather Easy Bed & Love Seat



Sofa Throw Pillows



Dinette Chairs

#### Bedroom



Bedspread & Pillow Shams



Throw Pillows



Victory Circle



Caribbean Blue



Torino Red



Horizon Silver



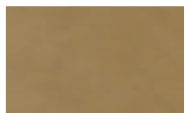
Sonora Sunset



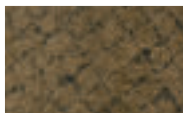
Pearl Gray

### INVITATION

#### Living Room/Dining Room



Leather Easy Bed & Love Seat



Sofa Throw Pillows



Dinette Chairs

#### Bedroom



Bedspread & Pillow Shams



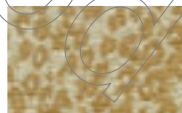
Throw Pillows

### MERLOT

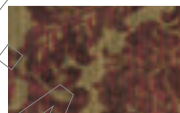
#### Living Room/Dining Room



Leather Easy Bed & Love Seat

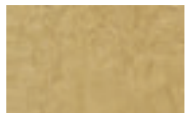


Sofa Throw Pillows

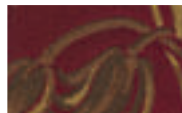


Dinette Chairs

#### Bedroom



Bedspread & Pillow Shams



Throw Pillows

## INTERIOR WOOD FINISHES



High Gloss Cherry



High Gloss Maple



Anderson Walnut



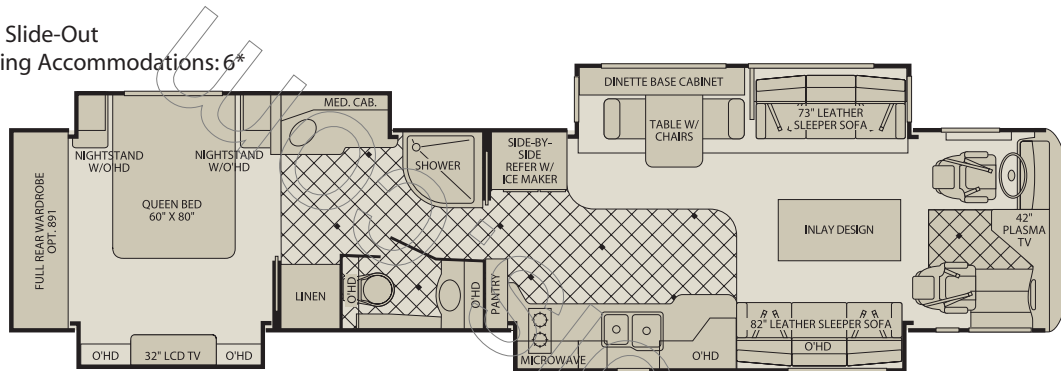
Kensington Mocha

\*Fabrics shown represent primary decor choices. Many additional fabrics are included within each decor choice.

#### 45A

##### Quad Slide-Out

Sleeping Accommodations: 6\*

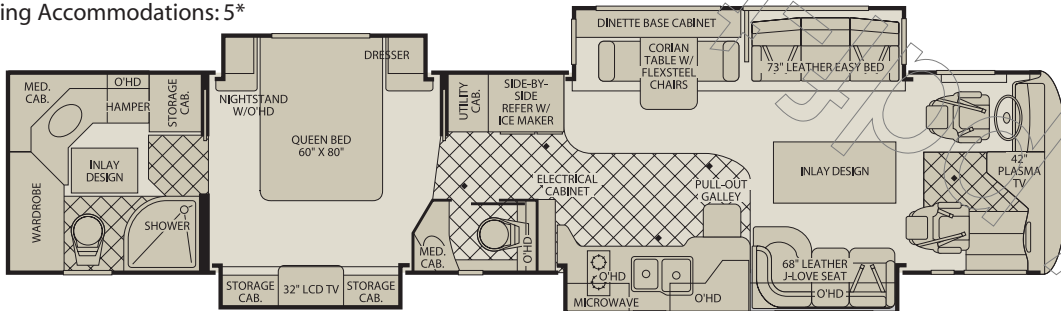


Interior Storage Capacity: 130 cu. ft.  
Exterior Storage Capacity: 120 cu. ft.

#### 45E

##### Quad Slide-Out

Sleeping Accommodations: 5\*

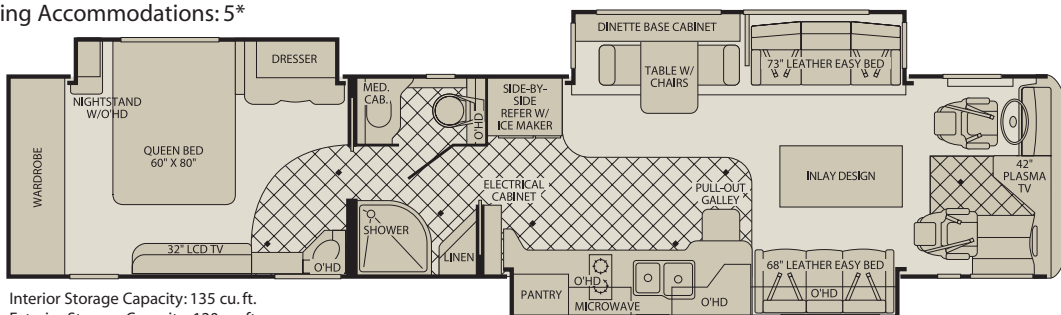


Interior Storage Capacity: 135 cu. ft.  
Exterior Storage Capacity: 120 cu. ft.

#### 45K

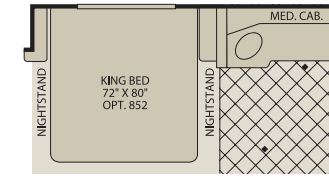
##### Triple Slide-Out

Sleeping Accommodations: 5\*

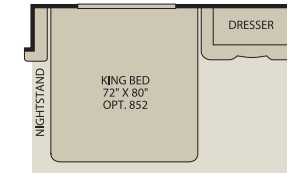


Interior Storage Capacity: 135 cu. ft.  
Exterior Storage Capacity: 120 cu. ft.

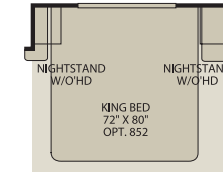
#### Available Options:



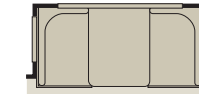
Available on 45A



Available on 45K



Available on 45E



Available on All Floor Plans



Available on All Floor Plans



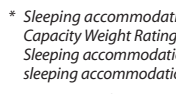
Available on All Floor Plans



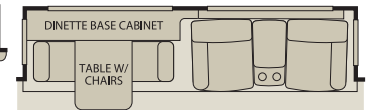
Available on All Floor Plans



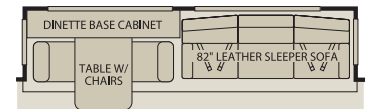
Available on 45A, 45K



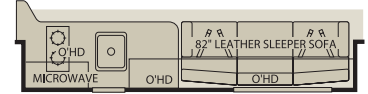
Available on 45K



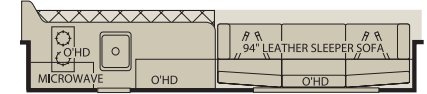
THEATER SEATING OPT. 639  
Available on All Floor Plans



EXTENDED SOFA BED W/ AIR MATTRESS OPT. 196  
OR  
EXTENDED SOFA BED W/ DINETTE OPT. 638  
Available on All Floor Plans



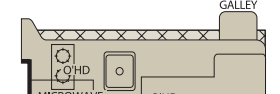
SHORT GALLEY W/ NUHEAT AND EXTENDED SOFA  
OPT. 152  
Available on 45E



SHORT GALLEY W/ NUHEAT AND EXTENDED SOFA  
OPT. 152  
Available on 45A, 45K



LEATHER RECLINER  
W/ OTTOMAN AND END TABLE  
OPT. 494  
Available on All Floor Plans



PULL-OUT  
GALLEY  
WET BAR W/ ICE MAKER  
OPT. 578  
Available on All Floor Plans



Available on All Floor Plans



Available on 45A, 45E



Available on All Floor Plans



Available on All Floor Plans



Available on All Floor Plans



Available on 45A



Available on 45K



Available on 45E

\* Sleeping accommodations are based on designed sleeping areas and may be greater than Sleeping Capacity Weight Rating (SCWR) found on the Cargo Carrying Capacity label located in each RV. Sleeping accommodations are based on standard layout. Optional furniture may increase or decrease sleeping accommodations.

Seatbelt configuration may vary depending on options chosen.



## Weights and Measurements

WEIGHTS	525 HP			600 HP		
	45A	45E	45K	45A	45E	45K
<b>GVWR (lbs)<sup>1</sup></b>	46,600	46,600	46,600	50,200	50,200	50,200
<b>Front GAWR (lbs)<sup>2</sup></b>	16,600	16,600	16,600	16,600	16,600	16,600
<b>Rear GAWR (lbs)<sup>2</sup></b>	20,000	20,000	20,000	20,000	20,000	20,000
<b>Tag Axle GAWR (lbs)<sup>2</sup></b>	10,000	10,000	10,000	13,600	13,600	13,600
<b>Base Weight (lbs)<sup>3</sup></b>	39,800	39,000	39,000	41,300	40,500	40,500
<b>GCWR (lbs)<sup>4</sup></b>	61,600	61,600	61,600	65,200	65,200	65,200
<b>Hitch Rating Weight (lbs)<sup>†</sup></b>	15,000	15,000	15,000	15,000	15,000	15,000
<b>Tongue Weight (lbs)<sup>†</sup></b>	1,500	1,500	1,500	1,500	1,500	1,500

### DIMENSIONS AND CAPACITIES

<b>Wheelbase</b>	304"	304"	304"	304"	304"	304"
<b>Overall Length<sup>5</sup></b>	44' 11.5"	44' 11.5"	44' 11.5"	44' 11.5"	44' 11.5"	44' 11.5"
<b>Overall Height (w/AC)</b>	12' 10"	12' 10"	12' 10"	12' 10"	12' 10"	12' 10"
<b>Overall Width (maximum)<sup>6,7</sup></b>	101.5"	101.5"	101.5"	101.5"	101.5"	101.5"
<b>Interior Height (maximum)</b>	84"	84"	84"	84"	84"	84"
<b>Interior Width (maximum)</b>	96"	96"	96"	96"	96"	96"

### TANK AND LIQUID CAPACITIES

<b>Fresh Water Holding Tank (gal)</b>	112	112	112	112	112	112
<b>Grey Water Holding Tank (gal)</b>	60	60	60	60	60	60
<b>Black Water Holding Tank (gal)</b>	40	40	40	40	40	40
<b>Appliance Propane Tank (WC)<sup>8</sup></b>	30.7	30.7	30.7	30.7	30.7	30.7
<b>Fuel Capacity (gal)</b>	150	150	150	150	150	150

**Liquid Weight Reference:** Water (gal) = (8.3 lbs/3.8 kgs) Fuel (gal) = (7.1 lbs/3.2 kgs) Propane (gal) = (4.2 lbs/1.9 kgs)

**Metric Conversion:** Multiply pounds x 0.453 to obtain kilograms. Multiply gallons x 3.785 to obtain liters.

#### CHASSIS (525 HP CAT® ENGINE)

**Frame:** Liberty Chassis

**Engine:** Cat® C13 525 HP, 12.5 L

**Alternator Amps:** 270 Amp. Leece Neville

**Torque:** 1650 lb-ft @ 1200 RPM

**Transmission:** Allison 4000 MH, 6 Speed w/Electronic Shifter

**Tires:** 315/80R 22.5 Goodyear® Radial

#### CHASSIS (600 HP CAT® ENGINE)

**Frame:** Liberty Chassis

**Engine:** Cat® C15 600 HP, 15.2 L

**Alternator Amps:** 270 Amp. Leece Neville

**Torque:** 1850 lb-ft @ 1200 RPM

**Transmission:** Allison 4000 MH, 6 Speed w/Electronic Shifter

**Tires:** 315/80R 22.5 Goodyear® Radial

1. GVWR (Gross Vehicle Weight Rating): Means the maximum permissible loaded weight of the motor home. The GVWR is equal to or greater than the sum of the unloaded vehicle weight plus the net carrying capacity.

2. GAWR (Gross Axle Weight Rating): Means the maximum permissible loaded weight a specific axle is designed to carry.

3. Base Weight: Means the estimated weight of the motor home without fuel, options, water, cargo or passengers.

4. GCWR (Gross Combined Weight Rating): Means the value specified by the motor home manufacturer as the maximum allowable loaded weight of this motor home with its towed vehicle. Towing & braking capacities may differ. Refer to Fleetwood & chassis manufacturer manuals for complete information.

5. Length taken from front bumper to rear bumper (excludes accessories).

6. Excludes safety equipment & awnings.

7. Motor homes feature a body-width over 96" which will restrict your access to certain roads. Before purchasing, you should research any state and/or province road laws which may affect your usage.

8. Tank manufacturer's listed water capacity (WC). Actual propane capacity is 80% of water listing as required by the safety code.

† The chassis manufacturer recommends the installation of a supplemental brake control system to activate the brakes on the vehicle or trailer you are towing. Hitch receiver ratings expressed are maximum for the hitch receiver installed and may require the purchase of additional equipment that is dependant on the weight of the towed load. Consult with hitch receiver manufacturer for further information.

**IMPORTANT — PLEASE READ:** Product information, photography and illustrations included in this publication were as accurate as possible at the time of printing. For further product information and changes, please visit our website at [www.fleetwoodrv.com](http://www.fleetwoodrv.com) or contact your local Fleetwood dealer. Prices, materials, design and specifications are subject to change without notice. All weights, fuel, liquid capacities and dimensions are approximate. Fleetwood has designed its recreational vehicles to provide a variety of uses for its customers. Each vehicle features optimal seating, sleeping, storage and fluid capacities. The user is responsible for selecting the proper combination of loads (i.e. occupants, equipment, fluids, cargo, etc.) to ensure that the vehicle's capacities are not exceeded.



## Standard Features

### Interior

#### THROUGHOUT

- **Deluxe Roller Bearing, Full Extension Drawer Guides**
- **Denso® A/C & Heating System**
- **Solar Charging System w/120 Watt Solar Panel**
- **Whole Coach Water Filtration System**
- **Whole House Surge Protector**
- 120 Volt & Diesel Fuel Heating
- 12V Halogen Ceiling Lighting
- 12V Halogen Recessed Lights at Entry & Passenger Area
- 12V Power Vienna Shades - Living & Bedroom Areas
- 2 Full Coverage 12V Power Sun Visors
- 2800-Watts Pure Sine Wave Inverter/Converter
- 3 13.5M Low Profile Roof Air Conditioners (w/Heat Pump Feature on Back Two Only)
- 3 Fan-Tastic® Rain Sensor Power

#### DRIVER CONVENIENCE

- **Adjustable Brake & Throttle Pedals**
- **Driver's Memory Pod w/Adjustable Pedals, Seat & Steering Column**
- **Flexsteel® Leather 8-Way Power Driver Seat w/Memory/Heat/Massage/Power Lumbar & Recline**
- **Flexsteel® Leather 8-Way Power Passenger Seat w/Heat/Massage/Power Lumbar/Electric Footrest**
- **Sony® Rear Vision System w/Audio (Camera & Color Monitor)**
- 3 Auxiliary 12V Dash Receptacles 2 at Dash & 1 at Passenger Wall Unit

#### LIVING ROOM

- **42" Sony® High Definition Plasma Flat Panel Monitor w/Remote (Front)**
- **Fabrica® Carpeting w/Inlaid Design-Living Area**
- **Pre-Programmed Universal Remote Control (Controls All Electronics, Except Bose® 321)**
- **TV Cable Ready**

- Roof Vents w/3-Speed Fan
- 3/8" Vinyl Padded Ceiling w/Decorative Air Plenum & Indirect Lighting
- 5 12V Power Front & Sides Cellular Shades
- Aqua Hot Hydronic Heating-50,000 BTU 3 Heat Zones & Basement Heat w/120-Volt & Diesel Fuel Heating
- Automatic Generator Start Switch (Network System)
- Back-Up Alarm
- Battery Monitor
- Centralized Control Panel Display Center
- Choice of Kensington Mocha, Anderson Walnut, High Gloss Cherry or High Gloss Maple Cabinetry
- Daytime Running Lights
- Decorative Throw Pillows
- Deluxe Padded Window Treatments
- Diagonally Laid Porcelain Tile at Front

- Automotive Dash w/Full Instrumentation
- Back Lighted Instrument Panel
- Battery Disconnects (Electronic for Coach & Manual for Chassis)
- CB Radio Ready (Power & Antenna)
- Compass & Exterior Temperature Gauge (Network System)
- Cruise Control
- Driver/Passenger Map Lights
- Engine/Trip Computer (Network System)
- Hydraulic Step Well Cover w/Lighted Stepwell Area
- I.C.C. Light Switch

- 68" Flexsteel® Leather Easy Bed (Door side)
- 73" Flexsteel® Leather Easy Bed (Roadside)
- 82" Flexsteel® Leather Easy Bed
- Bose® Lifestyle 38 System w/5 Speakers
- Dual High Definition DSS Receivers (Front & Rear)

- Entry w/Accents
- Electronic Battery Control Center
- Energy Management System
- Hand Held Eureka® Vacuum Cleaner
- Hardwood Front TV Monitor Overhead & Dash Design
- Interior Multi Plexed Switches
- Lined Shelves
- Multi-Point Water Pump Switching (Multiplex)
- Park Telephone Ready
- Rope Lighting
- SGM Defrost System
- Solid Contemporary Cabinet Doors
- Solid Hardwood Drawers w/Dovetail Joints
- TuffPEX® Plumbing System
- Video/Coach System w/4 Integrated Cameras (Network System)
- Washer & Dryer Ready w/Two Adjustable Shelves

- Large Polished Corian® Drink Holder in Dash
- Magellan® GPS Navigation System (Network System)
- Manual Air Dump Override Switch
- Power Driver Window
- Remote Auxiliary Start Switch
- Smart Wheel w/Leather & Burl Wood Trim
- Tag Axle Manual Dump Switch
- Tilt/Telescoping Steering Wheel
- Visteon® AM/FM Radio & Single CD Player

- Polished Corian® Dinette Tabletop w/Storage Wall Unit, 2 Flexsteel® Free Standing Chairs and a Large Viewing Window
- TracVision® "In-Motion" High Definition Domed Digital Satellite System

#### GALLEY

- **14 cu. ft. Dometic® 120V/Propane Side By Side Refrigerator w/Icemaker/Brushed Stainless Finish or Black Gloss (Decor Tied)**
- **2 Area Fabrica® Throw Rugs w/Inlaid Design**
- **Adjustable Shelves**
- **Deluxe Roller Bearing, Full Extension Drawer Guides**
- **Insta Hot & Cold Water Dispenser**
- **Polished Corian® or Brite Stainless Steel 50/50 Double Bowl Galley Sink (decor Tied)**

#### BEDROOM

- **32" Wall Mounted Sony® High Definition LCD Flat Panel Monitor & Remote (Rear)**
- **60" x 80" (Full Queen-Size) Senora Mattress w/Radius Corners**
- **Bose® 321 Home Theater System w/4 speakers**
- 120V/12V AC/DC Central Electrical Panel
- 12V Power Vienna Shades
- Accent Rope Lighting at Select

#### BATHROOM

- **Polished Corian® Lavy Top w/Stainless or Polished Corian® Sink & Moen® or Delta® Faucet (Decor Tied)**
- **Satin Nickel or Brass Finish Bath Accessories (Decor Tied)**
- Fiberglass Shower Pan w/Polished Corian® Walls w/Accent Theme
- Hand Laid Wallpaper w/Decorative

#### SAFETY/CONVENIENCE

- Carbon Monoxide Detector/Alarm
- Fire Extinguisher

\* **Bold Denotes American Coach Key Features**

- 120V Outlet & Telephone Jack at Dinette
- Accent Rope Lighting at Countertops
- Built-In Range Hood w/Light/Fan
- Cabinet Storage for Sink & Range Covers
- GE Advantium® Convection Microwave Oven w/Brushed Finish or Black Glass (Decor Tied)
- High Rise Galley Faucet w/Pullout Sprayer
- Micro Mini Blind

- Countertops
- Bedspread
- Cedar Lined Wardrobe
- Decorative Throw Pillows
- Engine Block Heater Switch
- Halogen Lights
- Hand Laid Wallpaper w/Decorative Border
- LED Floor Lights
- Padded Fabric Headboard w/Wood Accent (King bed option only 45E)

- Border
- Medicine Overhead Cabinet
- Polished Corian® Molded Shower Caddy
- Porcelain Tile Floor w/Accents (Diagonally Laid)
- Residential China Bowl Vacuum Flush Toilet
- Residential Style Fixed

- Propane Detector/Alarm

- Polished Corian® Galley Top & Sink Covers
- Polished Corian® Range Cover
- Porcelain Tile Floor w/Accents (Diagonally Laid)
- Recessed KitchenAid® 2-Burner Cook Top
- Silverware Tray
- Task Halogen Lighting
- Wine Rack & Glass Storage Cabinet

- Polished Corian® Counter & Nightstand Tops
- Recessed Wardrobe Light
- Remote Generator Start
- Safe
- Second Phone Jack
- Shoe Storage in Wardrobe Closet
- Solid Wood Panel Bath/Bedroom Doors
- Wall Sconce Light Fixtures

- Shower Head
- Satin Nickel or Brass Finish Radius Shower Door w/Positive Latch (Decor tied)
- Skylight in Shower
- Toilet Paper Dispenser, Towel Rings, Soap Dish, Toothbrush Holder & Robe Hook

- Smoke Detector/Alarm

*IMPORTANT — PLEASE READ: Product information, photography and illustrations included in this publication were as accurate as possible at the time of printing. For further product information and changes, please visit our website at [www.fleetwoodrv.com](http://www.fleetwoodrv.com) or contact your local Fleetwood dealer. Prices, materials, design and specifications are subject to change without notice. All weights, fuel, liquid capacities and dimensions are approximate. Fleetwood has designed its recreational vehicles to provide a variety of uses for its customers. Each vehicle features optimal seating, sleeping, storage and fluid capacities. The user is responsible for selecting the proper combination of loads (i.e. occupants, equipment, fluids, cargo, etc.) to ensure that the vehicle's capacities are not exceeded.*



## Standard Features

### Exterior

#### THROUGHOUT

- **4 Roof Mounted Girard Power Awnings w/ Dual Wind Sensor System (5 Foot Extension on Roadside & 10 Foot Extension on Door Side)(Roadside Window Awnings Available Instead of Roof Mounted Awnings)**
- **Large "Bus Style" One-Piece Windshield**
- **Onan® 10 kW Quiet Diesel Generator w/Power Slide-Out**
- 2 Folding Lawn Chairs w/Basement Storage Rack
- 25' Fresh Water Hose
- 3 Patio Receptacles
- 4 12V Electrical Outlets in Exterior Luggage Compartments Near Each Corner of Coach
- 4 Hella Docking Lamps
- 4 Turn Signal Repeaters Per Side of Coach
- 50' Air Service Line
- 50 Amp Electric Power Cord Reel
- Chrome "Bus Style" Heated Mirrors w/Remote Adjustment & Turn Signal Indicators

#### AUTOMOTIVE

- **15,000 Lbs. Trailer Hitch Receiver w/Chrome Hitch Cover, Pin & Clip\***
- **4-Point Automatic Leveling System Air w/Hydraulic**
- 2 12V Chassis Batteries
- 3 8D Maintenance Free Absorption Glass Mat House Batteries - (975 AH)

#### SAFETY/CONVENIENCE

- **Combination Touch Pad Access Entry Door (Sidewall Mounted)**
- **Keyless Entry Door w/Key Fob**
- 1 Porch Light (Multiplex)
- 30" Front Entry Door w/Dead Bolt &

#### BODY STRUCTURE

- **Bonded One-Piece Windshield w/Steel Frame**
- **Liberty Chassis**
- Electro-Coated Platform
- Gel Coat Fiberglass Exterior Sidewalls

- Color Coordinated Slide-Out Box Awnings
- Domed One-Piece Fiberglass Roof w/Radius Corners
- Dual Holding Tank San-T-Flush™ System
- Dual Locking Fuel Fill Doors
- Dual Pane Windows w/Screens
- Entry Screen Door
- Exterior Convenience Light at Dump Valves
- Exterior Rinse Hose w/Soap Dispenser & Paper Towel Holder
- Fiberglass Front & Rear Quarter Panels
- Floor Mounted Propane Tank, 30.7 Gallons (WC)
- Fresh Water Gravity Fill Door
- Front Fiberglass Fascia Slide-Out
- Full Body Paint
- Full Fiberglass Front & Rear Caps
- Full Width Rear Rockguard w/Anti Sail Mud Flap & Stainless Panel
- Hadley® Air Horns
- Holding Tanks w/Low Point Drain Valves

- 55 Degree Turning Radius
- Anti-Lock Brake System (ABS)
- Large Rear Engine Access Door w/Power Assist Struts
- Tag Axle (Dump air from rear bags)
- Tire Pressure Check Gauge

- Pneumatic (Air) Lock
- 4 Side Docking Lamps
- Auxiliary Fog/Driving Lamps
- Deluxe Lighted Entry Assist Handle w/Logo

- Heated Water & Holding Tank Compartments
- Interlocking Aluminum Hull Construction Extrusions
- One-Piece Domed Fiberglass Roof
- Steel Surface on Front

- Integrated Rear Wing Deflector
- Intermittent Wiper System w/Single Motor & Exterior Washer Nozzles
- Large Passenger Window
- Large Windshield Washer Bottle
- Lexan® "Summit Body Block" Shield
- Mud Flaps, Front & Rear
- Polished Stainless Service Panels
- Polished Stainless Bumpers - Front & Rear
- Power Knife Valve Assembly w/3" Outlets
- Power TV Antenna w/Warning Alarm and 2 Jacks
- Power Water Hose Reel
- Sound Absorption Material Front, Rear & Engine Frame
- Stainless, Brushed Polished Kick Plate Under Entry Door
- Tank Level Monitor (Interior/Exterior) (Network System)
- Two Piece Rear Ladder
- Variable Speed Aquatex Water Pump
- Water Heater By/Pass Check Valve
- Water Pump Switch (Multiplex)

\*The chassis manufacturer recommends the installation of a supplemental brake control system to activate the brakes on the vehicle or trailer you are towing. Hitch receiver ratings expressed are maximum for the hitch receiver installed and may require the purchase of additional equipment that is dependant on the weight of the towed load. Consult with hitch receiver manufacturer for further information.

- Electric Entry Door Awning
- Integrated Seat Belts/Driver & Passenger Seats
- Power Double Entry Step

- Bulkhead/Engine Frame
- Vacu-bond® Insulated Storage Area
- Vacu-bond® Sidewall, Roof & Floor Construction

#### STORAGE

- **Exterior Side Hinged Storage Doors w/Lockable Latch System & Drop Pin Retention System**

- Brushed Aluminum Rear Access Grill
- Luggage Compartment Lights (Multiplex)

- Power Luggage Door Locks w/Key Fob

## Options Interior

#### THROUGHOUT

- Central Vacuum System w/Accessory Kit
- Galley to Entry Tile Flooring
- Heated Tile Floor w/Opt #928
- Interior LED Décor Lighting Package
- Special Order Interior Request
- Stackable Washer & Dryer Unit w/Tile Flooring (N/A on 45K)
- V.I.P. Factory Delivery
- Washer & Dryer Vented w/Tile Flooring

#### DRIVER CONVENIENCE

- Flexsteel® 8-Way Power Extra Wide Passenger Seat w/Heat/Massage/Power Lumbar/Electric Footrest
- Visteon® AM/FM CD-6 /Sirius® Satellite Radio In Dash (6 Month Subscription Included)
- Vorad Collision Avoidance System

#### LIVING ROOM

- 120-Volt Power Theater Seats w/Center Console Unit
- 2/3 J-Style Sleeper Sofa
- Flexsteel® Leather J-Love Seat (45K)
- Flexsteel® Leather Sofa Sleeper w/Air Mattress (60" x 80")
- Flexsteel® Leather Sofa w/Air Mattress
- Free Standing Flexsteel® Leather Recliner w/Table
- Shorter Dinette Area w/Extended Flexsteel® 82" Sofa w/Air Mattress
- Upholstered Dinette Booth

#### GALLEY

- 4-Door Norcold® Refrigerator w/Ice Maker & Water dispenser in Door
- Built-in Dishwasher Unit
- Nuheat® Heated Tile Floor (Bath Area included on 45E)
- Recessed 3 Sealed Burners Range w/Oven w/Brushed Stainless Finish or Black Glass (Decor Tied)

- Short Galley w/Nuheat® Mat & Extended Sofa
- Wet Bar Galley w/Built-In Ice Maker Unit

#### BEDROOM

- Bedroom Ceiling Fan
- Bedroom Network Monitor
- Fixed 37" Plasma Flat Panel TV
- Full Length Hanging Rear Wardrobe
- King Bed (72" x 76")
- Select Comfort King Air Mattress w/2 Remotes
- Select Comfort Queen Air Mattress w/2 Remotes
- Shirt Ward w/Drawers Rear Wardrobe

#### BATHROOM

- Nuheat® Heated Tile Floor (45K)

## Options Exterior

#### THROUGHOUT

- 12.5 kW Quiet Onan® Diesel Generator w/Power Slide-Out Assembly
- A Basement Slide-Out Tray Package (2) 90"
- A Basement Slide-Out Tray Package w/90" Electric Slide
- D Basement Slide-Out Tray Package (1) 54", (1) 36"
- Exterior Entertainment Center w/32" LCD Flat Panel TV Integrated into the Sidewall
- Exterior Entertainment Center w/23" LCD Flat Panel TV w/Swing Arm & Storage Cabinet
- B Basement Slide-Out Tray Package (2) 54", (2) 36"

- C Basement Slide-Out Tray Package (1) 90", (1) 54", (1) 36"
- C Basement Slide-Out Tray Package w/90" Electric Slides
- D Basement Slide-Out Tray Package (1) 54", (1) 36"
- Exterior Entertainment Center w/32" LCD Flat Panel TV Integrated into the Sidewall
- Exterior Entertainment Center w/23" LCD Flat Panel TV w/Swing Arm & Storage Cabinet

- Norcold® 12V/120V Chest Refrigerator/100 lb Cap. Freezer AC/DC w/Slide-Out Tray
- Norcold® 12V/120V Chest Refrigerator/75 lb Cap. Freezer AC/DC w/Slide-Out Tray and BBQ Grille
- Special - Exterior Paint Request
- Undercarriage LED Accent Lighting Package

## Fleetwood Exclusives

- **15,000 lb. Trailer Hitch Receiver**
- **55 Degree Turning Radius**
- **Complete TuffPEX® Plumbing System**
- **Denso Dash A/C System with Approximately 17,000 BTU Cooling**
- **ESP - Energy System Protect (5,000 Joules of Surge Protection)**

- **Liberty Chassis w/Electro-Coated Platform**
- **Power Driver Window**
- **Radius, Interlocking Aluminum Framed and Vacu-Bonded® Roof Structure**
- **Wide Entry Door, with Pneumatic Entry Door Locks and "Doggy" Window**

## Fleetwood Advantages

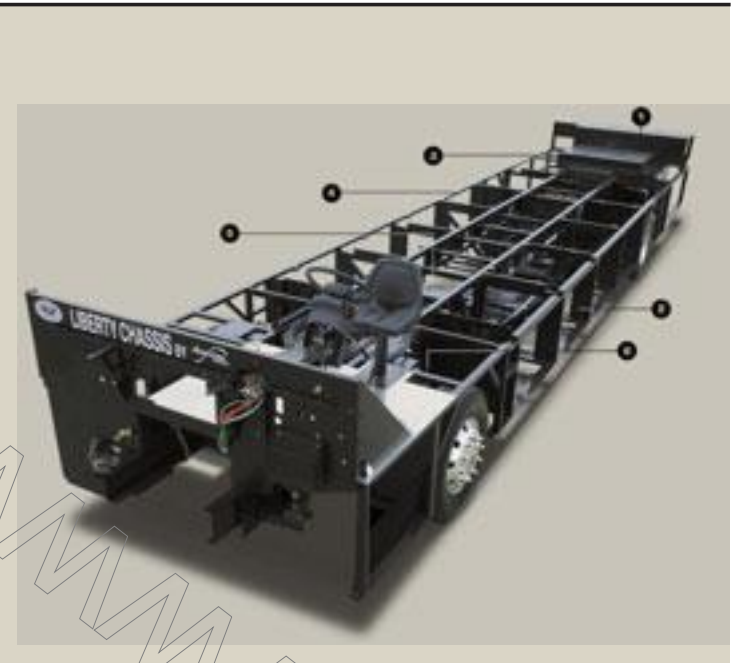
- **50" Tall, One-Piece Windshield Bonded to Steel**
- **Independent Front Suspension (Standard)**
- **Roof Mounted Engine Air Intake**



American Heritage

## American Coach Exclusive.

We set out to construct the most advanced and durable driving platform imaginable for an incredibly smooth ride. The result: The Liberty Chassis. Whether you're traveling across the country to visit family, or meeting up with other proud owners at rallies across the nation, this American Coach exclusive design (patent pending) has a clear advantage in structural integrity, drivability and power over the competition. You won't believe how well it handles and how comfortable your travels can truly be.



### THE DRIVER'S AREA

includes a comfortable Flexsteel® leather 8-way driver's seat with lumbar support, massage and heat features. The revolutionary network computer technology combines many of the coach's features into one integrated system; all trip information and the GPS is controlled from two display touch screens. You'll also enjoy the driver's memory pod that adjusts the position of the pedals, seat, and steering column to each driver's specifications. You couldn't imagine a more comfortable setup for the smoothest ride possible, no matter how long the journey.

### THE SIDE-VIEW CAMERA

is turn signal activated and provides a video feed to the rear vision monitor for additional visibility to aid in lane changing.

### THE VORAD SYSTEM

(Vehicle On-Board Radar) is a state of the art collision avoidance warning system with adaptive cruise control that can detect both objects and vehicles on the road by utilizing forward and side radar.

### LIBERTY CHASSIS

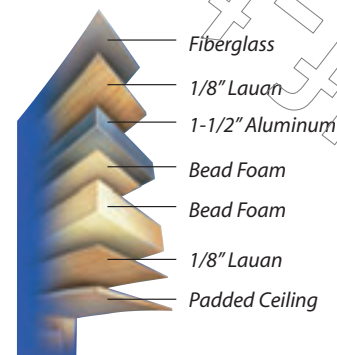
- 1. Huge 15,000 lbs. Towing Capacity.** Easily tows your favorite vehicle.
- 2. Laminated Storage Liners.** Easy to maintain, neat, clean look, durable.
- 3. Electro-Coated Structure.** Protects against corrosion. Enhances longevity, quality and reliability.
- 4. All Steel Structure.** Enhances driving experience, strength and longevity.
- 5. Center-Mounted Fuel Tank.** Assists in weight distribution.
- 6. Independent Front Suspension w/55 Degree Turning Radius.** Optimum handling, enhances driving experience.



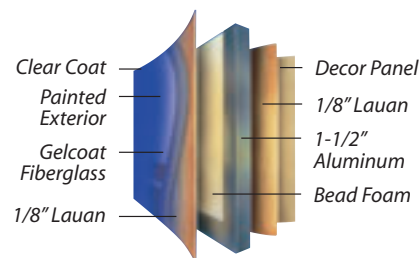
## LIKE NOTHING ELSE.

When American Coach set out to design the ultimate touring vehicle, we left nothing to chance. In order to create an RV that was truly superior to the competition, a rigorous testing process was created to ensure that the series functioned high above the curve, giving you the driving experience of a lifetime; and we succeeded. American Coach's patented Vacu-bond® process takes the numerous components of the sidewalls, flooring and roof, and seals them in a vacuum to produce a single, solid structure with unmatched strength and integrity. If that wasn't enough, we then used aluminum framing to further strengthen the vehicle's structure and create a large carrying capacity. The lightweight aluminum design improves overall strength while helping to maintain a smooth and seamless ride. We only settle for the best, and with American Coach, we've given it to you.

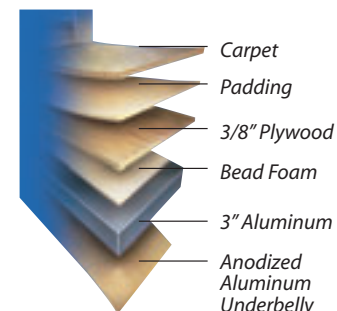
**Ceiling Construction with Fiberglass Roof**



**Sidewall Construction with Exterior Fiberglass**



**Floor Construction with Enclosed Underbelly**



## THE AMERICAN COACH PROMISE.

In one word, quality. The American Coach team is passionate about understanding each of our proud owners. Customer's wants, needs and suggestions are carefully scrutinized until the product meets or exceeds their standards. Always improving, constantly evolving and never satisfied, that is American Coach.

**SERVICE:** Our team of experts travel to countless rallies across the nation to provide world class service. Through this process, they get to know customers first hand, and in turn, deliver the highest level of service and satisfaction.

**PLANT TOURS:** Our doors are always open to those who call American Coach home. We welcome you to call 800-648-6582 for more information, or to set up a time to come visit us.

**VIP FACTORY DELIVERY:** Our optional VIP delivery service gives you an ideal opportunity to learn everything about your new vehicle from the very people who proudly designed and built it.

## What Drives You?

Maybe it's feeling like you're the only one on Earth. Perhaps it's the unique sense of closeness with the great outdoors. Or, it might be the joy that comes from spending quality time with family and friends. Whatever the reason, we know that you have a strong drive to experience everything that comes with spending time on the road. And for more than 50 years, we've shared that passion with you. Because we're RV enthusiasts ourselves, you can see our passion in the vehicles we design and build. Own a Fleetwood, and you'll feel like you're not just traveling, but embarking on an experience unlike any other. Set your own course for adventure and get out there and explore the world around you. Once you do, you'll see what it is that drives us — it's you.

**RV OWNERCARE\*** is a limited one-year/15,000-mile coach warranty and three-year/50,000-mile structural warranty, whichever occurs first, and it is fully transferable for the first 12 months. RV OWNERCARE is one of the RV industry's most comprehensive programs and includes systems, appliances, components and construction, with no deductible and no service charge. RV OWNERCARE coverage is provided from a company that will be around in the future to service your needs. See your nearest American Coach dealer for a full explanation of benefits and restrictions.

**FLEETWOOD TRAVELCADE CLUB** As a Fleetwood owner, you're eligible to become a member of our owners' group, Fleetwood Travelcade Club. It's a perfect way to meet other Fleetwood owners who love to travel across America and share in the RV lifestyle. Call (877) 577-2560 or visit [www.fleetwood.com/clubs](http://www.fleetwood.com/clubs) to learn more and join the fun! American Coach owners can join two great clubs. For more information visit American Coach Association at [www.americancoachassoc.com](http://www.americancoachassoc.com) or American Coach Chapter of FMCA [www.americancoach-fmca.com](http://www.americancoach-fmca.com).



[www.fleetwoodrv.com](http://www.fleetwoodrv.com)

\*For complete info see your American Coach dealer. ©2005. Fleetwood Enterprises, Inc.  
Printed in the USA. Inventory control number AH06B1 10/05.

**FLEETWOODRV.COM** To locate a dealer near you, visit our website or call 1-800-444-4905. We can also be contacted at Fleetwood Customer Relations, P.O. Box 7638, Riverside, CA 92513-7638.

**IMPORTANT—PLEASE READ** Product information, photography and illustrations included in this publication were as accurate as possible at the time of printing. For further product information and changes, please visit our website at [www.fleetwoodrv.com](http://www.fleetwoodrv.com) or contact your local Fleetwood dealer. Prices, materials, design and specifications are subject to change without notice. All weights, fuel, liquid capacities and dimensions are approximate. Fleetwood has designed its recreational vehicles to provide a variety of uses for customers. Each vehicle features optimal seating, sleeping, storage and fluid capacities. The user is responsible for selecting the proper combination of loads (i.e.: occupants, equipment, fluids, cargo, etc.) to ensure that the vehicle's capacities are not exceeded.

Your local American Coach dealer is:

**tread lightly!**  
LEAVING A GOOD IMPRESSION

