



REVOLUTION

For the rebellious spirit in all of us!

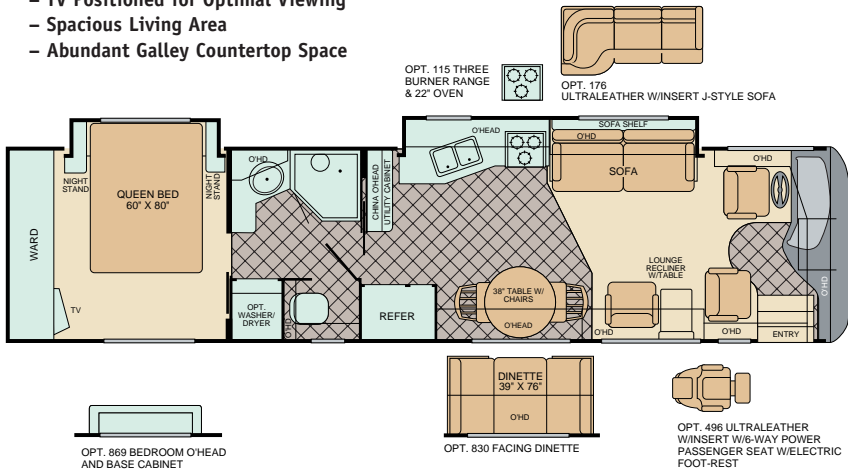


Features and Specifications

38 A

Highlights:

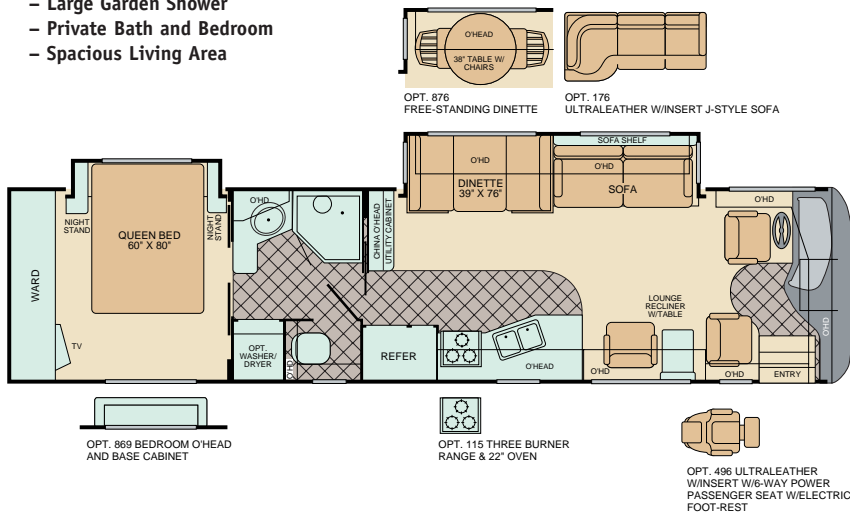
- TV Positioned for Optimal Viewing
- Spacious Living Area
- Abundant Galley Countertop Space



38 B

Highlights:

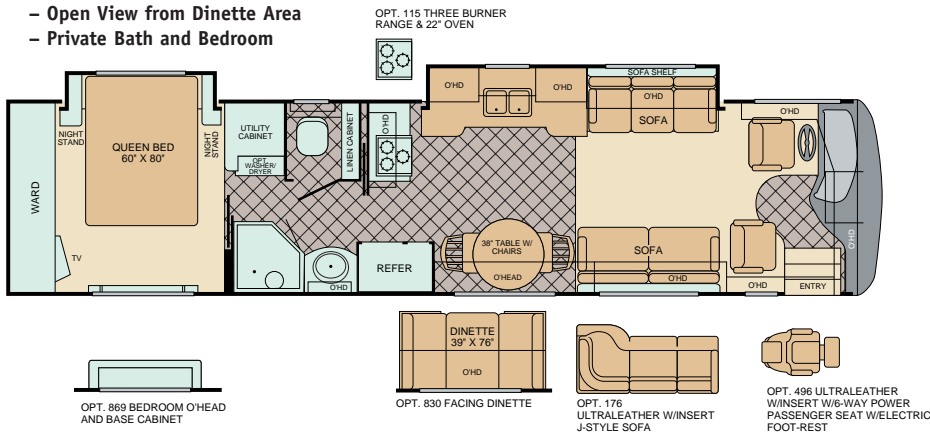
- Large Garden Shower
- Private Bath and Bedroom
- Spacious Living Area



40 C

Highlights:

- Abundant Storage Throughout
- Open View from Dinette Area
- Private Bath and Bedroom



STANDARD FEATURES

APPLIANCES

Norcold® 12 cu. ft. (4 Door) Refrigerator
 3-Burner Cook-top (Sealed Burners)
 Convection Microwave Oven
 10 Gallon LPG/DSI/120V Water Heater
 20" Panasonic® Stereo Rear Bedroom TV
 27" Panasonic® Stereo Front Overhead TV
 TV Antenna
 4 Head/Hi-Fi Panasonic® VCR
 Smoke Detector/Alarm
 LPG Detector/Alarm
 CO Detector/Alarm
 Fire Extinguisher

BODY STRUCTURE

Raised Stacked Rail Chassis
 Full Basement Storage
 One-Piece Fiberglass Roof

ELECTRICAL

Dual 34,000 BTU Furnaces
 Dual Roof A/C High Efficiency
 160 Amp Alternator
 50 Amp Power Cord Service
 2,000 Watt Inverter/Converter
 7.5 KW Onan® QD Diesel Generator
 Energy Management System

EXTERIOR

10,000 lb. Trailer Hitch*
 Radius Roof with Flat Interior
 Double Entry Step w/Power Step Cover
 One-Piece Hood with Easy Lift System
 Dual Glazed Windows
 Exterior Utility Compartment
 Exterior Paper Towel Holder & Soap Dispenser
 Exterior Assist Handle
 Full Length Interior Assist Handle
 Inverted Bus Style Mounted Exterior Mirrors
 Screen Entry Door with Easy Latch Access
 Clear Coat/Polish & Buff Exterior w/
 Coordinating Awning Package**
 (8 Exterior Graphics Choices)
 29" Entry Door w/Keyless Entry

EXTERIOR AUTOMOTIVE

Cummins® 8.3 Litre, 350 hp ISC Diesel w/
 Side Radiator
 Dual Fuel Fill
 Mud Flaps
 Radial Tires - 275 R80 225 Michelin
 Front Mask
 Intermittent Windshield Wipers
 Remote Heated Rear View Mirrors
 Aluminum Wheels (4)
 Roof Mounted Chrome Air Horns

EXTERIOR STORAGE

Lockable Luggage Doors

INTERIOR

Vinyl Ceiling
 Ducted Roof Air Package
 Solid Surface Double Galley Sink
 Single Handle Galley Faucet with
 Removable Sprayer Head
 Porcelain Toilet with Hand Spray
 Residential Drawer Guides with Drawer Lock
 Sliding Exterior Wardrobe Mirror Doors

STANDARD FEATURES

OPTIONAL FEATURES

INTERIOR

Pleated Day & Night Shades - Living & Bedroom Areas
 1" Mini Blind - Galley & Bath Windows
 Residential Grade Carpeting - Living & Bedroom Areas
 Diagonal Ceramic Tile Floor - Galley, Entry & Bath Areas
 Solid Surface Polished Galley & Lavy Tops
 Solid Wood Cabinet Doors & Drawers
 Hardwood Cabinetry w/New Residential Hardware (Choice of Cherry, Maple or Walnut)
 Slide-Out Room Awnings
 Multiple Slide-Outs
 Solid Surface Backsplash w/Beveled Mirrors
 Solid Surface Nightstand Tops
 Solid Surface Linen Top
 DSS Tracvision
 Pneumatic Stepwell Cover
 Home Theater System w/DVD Player
 Shower with Seat and Obscure Glass Door

INTERIOR AUTOMOTIVE

2-Din Dash Radio with AM/FM Stereo/CD
 Rear Vision Camera & Monitor Package
 European Style Automotive Dash
 Adjustable Dash Gauge Package with Column
 Smart Steering Wheel
 Passenger Drink Holder/Coin Tray
 Dash A/C System with Dual Controls
 2-Speed Overhead Dash Fans
 3-Point Seat Belts
 Power Driver's Seat Pedestal
 Rain Sensor Power Vent
 Keyless Entry
 Aluminum Rims
 Adjustable Pedals

*** Includes Slide-Out Rooms, Entry Door, Patio and Windows. Patio Awning is Electric.*

(Standard Furniture Offering is Ultraleather™ w/Inlay)

New Optional Graphics - Wave
 New Passenger Seat w/Electrical Footrest
 New Central Vacuum Cleaner
 New Exterior Entertainment Package w/TV
 New Bedroom Overhead w/Base Cabinet
 New "In Motion" DSS System
 New 36" Slide-Out Tray
 90" Full Slide-Out Basement Tray
 Optional Graphics
 Compact Disc Changer
 CB Hand Held
 GPS System
 3-Burner with Cook-Top & 22" Oven Facing Dinette
 Free Standing Dinette
 Washer/Dryer
 Exterior Aluminum Rear Ladder
 54" Slide-Out Tray
 CSA - Freightliner

SPECIFICATIONS

Freightliner® Chassis

	38 A	38 B	40 C
Engine (ltrs.)	8.3L	8.3L	8.3L
Wheel Base	252"	252"	266"
GVWR (lbs.)(1)	31,000	31,000	31,000
Front GAWR (lbs.)(2)	12,000	12,000	12,000
Rear GAWR (lbs.)(2)	19,000	19,000	19,000
Base Weight (lbs.)(3)	25,500	26,200	26,200
GCWR (lbs.)(4)	41,000	41,000	41,000
Hitch Rating Weight (lbs.)*	10,000	10,000	10,000
Tongue Weight (lbs.)*	1,000	1,000	1,000
Fuel Capacity (gal.)	150	150	150

	38 A	38 B	40 C
Overall Length(5)	38' 9"	38' 9"	39' 11"
Overall Height with A/C	12' 5"	12' 5"	12' 5"
Overall Width (max.)(6)	101"	101"	101"
Interior Height (max.)	79"	79"	79"
Interior Width (max.)	96"	96"	96"
Fresh Water Holding Tank	95 gal	95 gal	95 gal
Grey Water Holding Tank	60 gal	60 gal	60 gal
Black Water Holding Tank	40 gal	40 gal	40 gal
Appliance LPG Tank (WC)(7)	38 gal	38 gal	50 gal
Water Heater Tank	10 gal	10 gal	10 gal

Liquid Weight Reference: Water (gal.) = (8.3 lbs./3.8 kgs.), Fuel (gal.) = (7.1 lbs./3.2 kgs.), LPG (gal.) = (4.2 lbs./1.9 kgs.)
 Metric Conversion: Multiply pounds x 0.453 to obtain kilograms, Multiply gallons x 3.785 to obtain liters

- (1) GVWR (Gross Vehicle Weight Rating): Means the maximum permissible loading weight of the motor home. GVWR is equal to or greater than the sum of the unloaded vehicle weight plus the net carrying capacity.
- (2) GAWR (Gross Axle Weight Rating): Means the maximum permissible loaded weight a specific axle is designed to carry.
- (3) Base Weight: Means the estimated weight of the motor home without fuel, options, water, cargo or passengers.
- (4) GCWR (Gross Combined Weight Rating): Means the value specified by the motor home manufacturer as the maximum allowable loaded weight of this motor home with its towed vehicle. Towing and braking capacity may differ. Refer to Fleetwood and chassis manufacturer manuals for complete information.
- (5) Length taken from front bumper to rear bumper (excludes accessories).
- (6) Excludes safety equipment and awnings.
- (7) Tank Manufacturer's listed water capacity (WC). Actual LPG capacity is 80% of water listed as required by the safety code.

* The chassis manufacturer recommends the installation of a supplemental brake control system to activate the brakes on the vehicle or trailer you are towing.



The World's #1 RV Manufacturer

Fleetwood Enterprises, Inc. • RV Marketing • P.O. Box 7638 • Riverside, CA 92513-7638

IMPORTANT-PLEASE READ: Product information, photography and illustrations included in this publication were as accurate as possible at the time of printing. For further product information and changes, please visit our website at www.fleetwoodrv.com or contact your local Fleetwood dealer. Prices, materials, design and specifications are subject to change without notice. All weights, fuel, liquid capacities and dimensions are approximate. Fleetwood has designed its recreational vehicles to provide a variety of uses for its customers. Each vehicle features optimal seating, sleeping, storage and fluid capacities. The user is responsible for selecting the proper combination of loads (i.e. occupants, equipment, fluids, cargo, etc.) to ensure that the vehicle's capacities are not exceeded.

Why would you buy anything else?

For every road you travel, Fleetwood has the RV to fit your high standards and lifestyle. We build the recreational vehicles America wants, accounting for nearly one out of every three RVs on the road today. How do we do it? We call it the **Fleetwood Equation**.

Size + Service + Quality = Value!

Size

The world's #1 RV manufacturer

Over the past half-century Fleetwood has grown to become the largest manufacturer of recreational vehicles in the world.

Fleetwood remains, year after year, the largest, most influential, innovative and recognized leader in the RV industry.

Service

Listening to our customers

With over 1,100 service dealers in the US and Canada, Fleetwood has the largest network in the RV industry. No other RV company comes close to equaling this vital customer support system. Fleetwood RV service dealers have instant, real-time electronic access to your service records as well as parts inventory and warranty repair authorization inquiries. We also provide a customer call center for service and product information so no matter where you travel in North America, professional support and fast answers are always nearby. Call toll free: 1-800-322-8216.



Quality

Using only the best materials

At Fleetwood, quality begins at the design stage so every coach is built right, right from the start.

Subsequent to design approval, full-functioning prototypes are built, then punished on a test track and subjected to accelerated life cycle tests where a few weeks can equal years of normal use. At the same time, components and systems are test-cycled thousands of times assuring years of problem-free use. Once approved for production, each unit is built by skilled technicians using quality materials and components, many of which are sourced through, or manufactured by, our subsidiary companies such as Gold Shield Fiberglass and Continental Lumber Products.



Fleetwood engineers specify the very best products and appliances from companies such as Coleman, Dometic, Flexsteel, Ford, Freightliner, Magic Chef, Panasonic, and Workhorse. These companies are experts in their respective fields and play a significant role as partners, not just suppliers.

All this assures that every Fleetwood RV has the fit, finish and details required by our high standards—as well as yours.

Value

Priced right with style

At Fleetwood RV, we look at value as the sum of everything we offer.

- Value is our design, engineering expertise, and innovative manufacturing methods.
- Value is structures and components that are the best in the industry, that meet or exceed government and industry safety standards.
- Value is Ownercare—a one-year/three-year warranty with coverage from a company that will be around in the future to service your needs. Ownercare is one of the RV industry's most comprehensive programs and includes systems and applications, construction, no deductible and no service charge. And it is fully transferable for the first 12 months. See your nearest Fleetwood dealer for a full explanation of benefits and restrictions.
- Value is customer satisfaction. When asked, more experienced RV owners would recommend Fleetwood to a friend than any other brand. Fleetwood RVs consistently hold their value better than most RVs at trade-in time.



Value is peace of mind.

SSQV—Size, Service, Quality, and Value. Together they equate to the very best RV you can buy, and the reason you should purchase a Fleetwood over any other brand.

Require these features when you purchase your next RV... Fleetwood does!

See you on the road!



Fleetwood Enterprises, Inc. • RV Marketing • P.O. Box 7638 • Riverside, CA 92513-7638

Your local Fleetwood RV dealer is:



Join Now!
(877) 577-2560

www.fleetwoodrv.com

Visit our website to find a dealer near you or learn more about other Fleetwood products. Or call 1-800-444-4905.

FOR CUSTOMER ASSISTANCE, call toll free at 1-800-322-8216, visit our website, or you may write to Fleetwood Enterprises, Inc., P.O. Box 7638, Riverside, CA 92513-7638.

IMPORTANT—PLEASE READ: Product information, photography and illustrations included in this publication were as accurate as possible at the time of printing. For further product information and changes, please visit our website at www.fleetwoodrv.com or contact your local Fleetwood dealer. Prices, materials, design and specifications are subject to change without notice. All weights, fuel, liquid capacities and dimensions are approximate. Fleetwood has designed its recreational vehicles to provide a variety of uses for its customers. Each vehicle features optimal seating, sleeping, storage and fluid capacities. The user is responsible for selecting the proper combination of loads (i.e. occupants, equipment, fluids, cargo, etc.) to ensure that the vehicle's capacities are not exceeded.