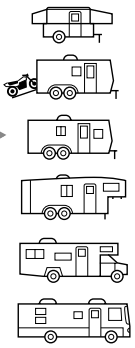




2009 Coachmen Captiva™
Enjoy the Lighter Side
of the Great Outdoors.



http://www.pdftools.com



Captiva™ Ultra-Lite



It's Easy.

See camping in a whole new lite. Even if you have a SUV or a new crossover vehicle, with Captiva Ultra-Lite by Coachmen you don't have to sacrifice space for lighter weight. 🐾 With its aluminum frame and fiberglass sidewalls the Captiva is easy to tow, yet it's packed with innovative, thoughtful features that set new standards for easy-living comfort and convenience. 🐾 Its 8 ft. exterior width and tall 78 in. interior ceiling height give you more living space. The spacious Super-U dinette/lounge area on

select models, linoleum flooring throughout and bunk bed

floorplan options make this very family

friendly. Don't sacrifice luxury for

convenience – with Captiva

Ultra-Lite, you can

have it all!



🐾 Lightweight and easy to tow, from end to end the 290BHS is still loaded with features, including a flush floor super slideout with dinette and sofa, designer countertops and a well equipped kitchen.



Captiva
Ultra-Light Travel Trailers

Features that matter.



EASY STORAGE

Space. Space. And more space. That's what you get in a Captiva. For example, not only is it designed for comfort, the queen bed is also uniquely built as a storage space using our bed lift system. And the fully equipped kitchen has plenty of places for all the items necessary to put together good meals.



EASY ENTERTAINING

Have fun during the day and then relax at night with the theatre package option that includes a Dolby® digital 5.1 Surround System and LCD television so you can watch your favorite tv shows. There is even a TV mount outside for exterior entertainment.



Lamination — A Bond That Lasts

Captiva Ultra-Lite is built with the highest level of quality using a **vacuum bond lamination** process for its sidewalls, roof and floor.

High strength urethane bonds a smooth fiberglass sheet to a lauan backing to form the exterior wall. Then it's bonded with urethane adhesive to a welded aluminum frame filled with rigid polystyrene insulation. Finally, a decorative panel is glued to the inside of the wall.



The completed wall is then placed under pressure in the vacuum bond (bag) process for 30 minutes or longer to ensure completely smooth, high strength bonding.

The result is a smoother exterior finish, stronger walls and lighter weight. Light and easy to tow and better built for longer life.



Visit our website anytime at www.easyRVing.com

for more information, and easy shopping tools like



- Finding the right Coachmen for you.
- Comparing different Coachmen models.
- Building your own RV.



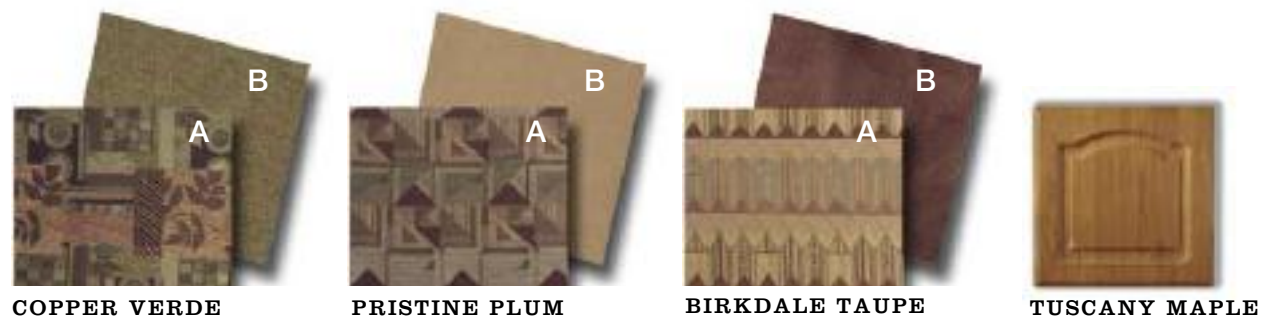
2009 Coachmen Captiva™ Ultra-Lite Easy.

Enjoy the Lighter Side of the Great Outdoors

Living is even more comfortable with plenty of room for family or friends. Shown is the 290BHS with a full 78 in. interior ceiling height for more living space. Add to that the easy to clean vinyl flooring, seamless countertops and stainless steel sink and you get an easy to tow, easy to use, family friendly unit.

Decor Choices

FABRIC KEY
A. Main **B.** Accent
 Coachmen's dazzling interiors feature top-grade fabrics that have been tested for maximum durability.
 Décor selections are subject to change throughout the model year. Please visit your Coachmen dealer or www.easyRVing.com for current décor availability.



Easy Features

LIVING APPOINTMENTS	H	HEATING AND AIR CONDITIONING	H	ELECTRICAL AND LIGHTING	H	PLUMBING AND LP SYSTEMS	H	SAFETY AND SECURITY	H
Tuscany Maple cabinetry	S	Double door refrigerator	P	Diamond plate front stone guard	O	Double 20 lb. LP bottles with auto change-over (LT models)	P	LP leak alarm	S
Thermofoil cabinet doors	S	Microwave oven	P	Rigid polystyrene insulation (walls/ceiling/floor)	S	Double 30 lb. LP bottles with auto change-over (SS models)	P	Fire extinguisher	S
Residential metal drawer guides	S	Double bowl kitchen sink	S	I-beam chassis	S	Molded LP bottle cover	P	Smoke detector	S
Cabinet drawer plastic totes (most models)	S	HEATING AND AIR CONDITIONING	S	Straight axles (SS models)	S	6-gallon gas/electric water heater	P	Carbon monoxide detector	S
Under sink utensil drawer (most models)	S	25,000 BTU E.I. furnace	S	Underlung axles (LT models)	S	Water heater by-pass valve	P	Entrance door dead bolt lock	S
Linoleum flooring	S	13,500 BTU ducted roof air conditioner	S	Radial tires	S	Foot pedal flush toilet	P	Breakaway switch	S
Pleated window shades	S	15,000 BTU ducted roof air conditioner (SS models)	S	Rear bumper with hose storage	S	Monitor panel	P	Light tinted safety glass windows	S
Designer window treatments	S	Even Cool™ insulated A/C ducting	S	Double entry step (LT models)	S	Demand water pump	P	Dark tinted safety glass windows	O
Booth dinette with pedestal table	S	Power bath vent	S	Triple entry step (SS models)	S	Skylight over shower	P		
Residential dinette with 4 chairs (SS models)	S	ELECTRICAL AND LIGHTING	S	Power patio awning	S	One-piece ABS tub surround	P		
Jackknife sofa (most models)	O	Upgraded interior light (SS models)	S	Exterior LP quick connect	P	Outside shower	P		
Rear sofa lounge in place of barrel chairs (280RLS)	O	Patio light	S	Stow-N-Go™ storage door (290BHS, 291QBS)	P	Flush floor main slideout rooms (SS models)	S		
Two bar stools (288FKS)	O	45 amp power center	S	Lincoln Mark LT	S	Rack and pinion slide system	S		
Skylight in kitchen (288FKS)	O	Outside GFI receptacle	S	Mountaineer	S	Alumicage™ framing	S		
Designer seamless countertops	S	Power patio awning	S	Explorer	S	Laminated vacuum bond construction	S		
SLEEPING APPOINTMENTS	S	Plumbing and LP systems	P	F-150 Reg Cab	S				
Queen bed (master suite)	S	Double 20 lb. LP bottles with auto change-over (LT models)	P	F-150 Super Cab	S				
Innerspring mattress	P	Double 30 lb. LP bottles with auto change-over (SS models)	P	R-150 Super Crew	S				
Sleep Easy package: pillowtop mattress in master suite and sofa with air mattress hide-a-bed (SS models)	P	Molded LP bottle cover	P	Explorer Sport Trac	S				
Two pillows and down comforter	P	6-gallon gas/electric water heater	P	Ranger	S				
Bedlift storage system (master bed) (select models)	P	Water heater by-pass valve	P	Ranger Super Cab	S				
APPLIANCES AND ACCESSORIES	O	Foot pedal flush toilet	P	Navigator	S				
Theater package: AM/FM, CD/DVD player with 5.1 surround sound, 19" LCD TV, exterior speakers and exterior mounted TV bracket (SS models)	O	Monitor panel	P	Ranger Reg Cab	S				
Cable TV jacks	S	Demand water pump	P	Ranger Super Cab	S				
TV antenna	P	Skylight over shower	P	Lincoln Mark LT	S				
Three-burner range with oven	P	One-piece ABS tub surround	P	Mountaineer	S				
Lighted power range hood	S	Outside shower	P	Explorer	S				

S = Standard
O = Optional
P = Essential Package*
LT = Lite Models
SS = Super Slide Models
***** Essential package items are required options.

Captiva Ultra-Lite

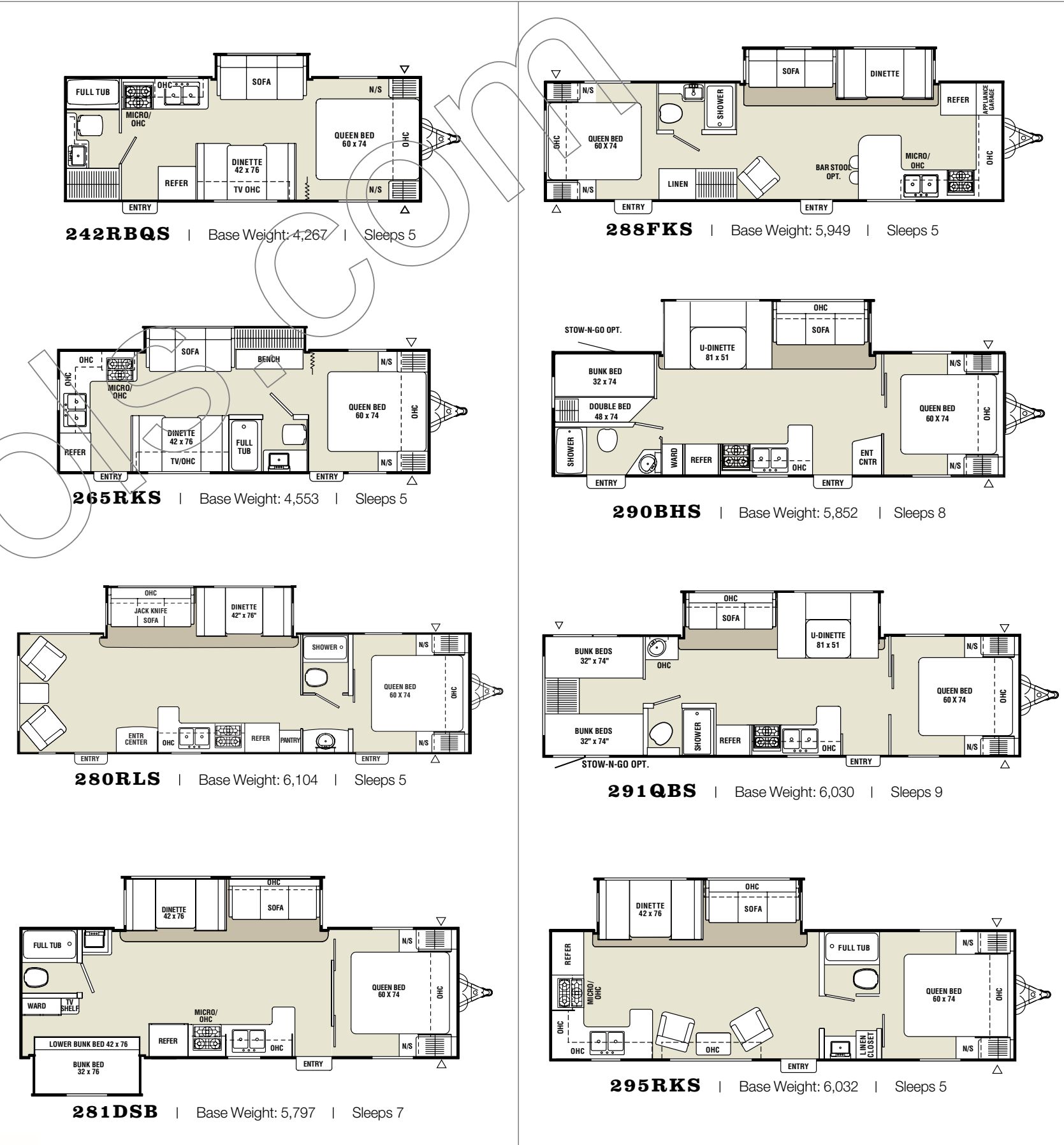
Specifications	LITE MODELS				SUPER SLIDE MODELS			
	242RBQS	265RKS	280RLS	281DSB	288FKS	290BHS	291QBS	295RKS
Base weight (lbs.)	4,267	4,553	6,104	5,797	5,949	5,852	6,030	6,032
Carrying capacity (lbs.)	3,215	3,060	2,598	3,098	2,951	2,780	2,865	2,786
Hitch weight (lbs.)	482	613	702	895	900	632	895	818
Interior height (coach)	78"	78"	78"	78"	78"	78"	78"	78"
Exterior height (includes A/C)	10'2"	10'2"	10'2"	11'	10'10"	10'10"	10'10"	10'10"
Exterior length	26'3"	27'6"	33'	29'11"	33'2"	31'10"	33'3"	31'8"
Exterior width	8'	8'	8'	8'	8'	8'	8'	8'
Awning length	16'	18'	18'	12'	18'	18'	18'	16'
Sleeping capacity	5	5	5	7	5	8	9	5
Exterior storage capacity (cu. ft.)	50	50	50	50	50	105	128	50
Fresh water capacity (gal.)	36	36	36	36	36	36	36	36
Waste water capacity (gal.)	30	30	30	30	30	30	30	30
Gray water capacity (gal.)	34	30	32	54	64	34	32	60
Water heater capacity (gal.)	6	6	6	6	6	6	6	6
Tire size	X	X	■	■	■	■	■	■
LP gas capacity (lbs.)	40	40	60	60	60	60	60	60

X = ST205/75R14C ■ = ST225/75R15D

Base weight: The weight of the unit with no fluids, cargo, optional equipment or accessories.
Carrying capacity: The amount of weight available for all fluids, cargo, optional equipment and accessories. The actual "loaded" weight will depend on the equipped unit and the owner's individual choice of cargo, etc.



Captiva Ultra-Lite — Easy Living Floorplans



Easy Design



A huge U-dinette/lounge in the slideout provides a spacious dining area as well as additional sleeping space. (Available in select models.)



The fully enclosed underbelly and heated tanks help you to extend the camping season.



The standard exterior LP quick connect makes it easy to quickly set up an outside lantern or hook up the grill and cook a couple of steaks. (Shown is the optional stainless steel exterior grill.)



One-piece rubber roof membrane
 Crowned aluminum roof truss
 Aluminum framing (sidewalls, end walls, roof and floor) for lighter towing weight with maximum construction strength.
 Roof R-11, sidewalls R-7, floor R-11 — for camping comfort.
 Powder coated I-beam chassis for stability and strength in towing.
 Aluminum framing around all window, door and storage openings for lighter towing weight.
 Pass-through storage (most models).



Easy to Use. Really.

Pete symbolizes our commitment to being your best friend on the road. Like Pete, we're always there to make sure your Coachmen is as easy and uncomplicated as possible, so you can escape life's hassles and enjoy RVing more.

Your Coachmen will be easy to buy, easy to use and easy to own. That's our promise to you. We accomplish this through clever designs and superior support after the sale. But the real measure of "easy" is in the countless thoughtful touches we include throughout your new Coachmen.

Easy to Own. Honest.

Our commitment to you is your ongoing satisfaction. Dealers are authorized to solve your problems on the spot and get you on your way without fuss or hassle. Should you ever need service or repair, it is easy to find one of the hundreds of Coachmen dealers or authorized repair centers nationwide.

Our toll-free service hotline (800-453-6064) and online service support center put you in touch with a Coachmen service representative, warranty information, maintenance information, troubleshooting tips, dealer locations and other helpful information. Coachmen. You couldn't ask for an easier traveling companion.

Travel Easy™. Always.

RVing is easier with Coachmen's *Travel Easy*™ Roadside Assistance included for the first year on most new motorized and towable Coachmen RVs*. Administered by Coach-Net®, this service provides you with 24/7 operational, technical and emergency road service coverage. Anywhere. Anytime. *Travel Easy*™ is the security of knowing that help is an easy phone call away.

*See your dealer for details.



All information contained in this brochure is believed to be accurate at the time of publication. However, during the model year, it may be necessary to make revisions, and Coachmen reserves the right to make all such changes without notice, including changes in prices, colors, materials, equipment and specifications, as well as the addition of new models and the discontinuance of models shown in this brochure. Therefore, please consult with your Coachmen dealer and confirm the existence of any materials, design or specifications that are material to your purchase decision.

COA-130 5.08 Printed in USA



Coachmen
Life should be so easy.

Coachmen Recreational Vehicle Company, LLC
P.O. Box 30, Middlebury, IN 46540



Easy to Enjoy. Seriously.

Purchase a new Coachmen RV and receive a free one-year membership in the Coachmen Owners' Association (C.O.A.).

You'll enjoy exclusive discounts at campgrounds, theme parks and fuel stations. You'll also receive concierge service 24/7 so you can find and buy what you need, often at big discounts!

Other benefits include trip routing, vacation packages, event reservations, mail forwarding and our helpful owners magazine — Easy RVing.

Plus annual camping events, a support network and services for first-time buyers.

Take advantage of your C.O.A. membership today by calling 888-422-2582.

To see how Coachmen is making the easy life even easier, visit www.easyRVing.com or call 1.800.353.7383.