



# Coachmen BROOKSTONE



INSPIRED FOR  
THE JOURNEY AHEAD

**At Coachmen, we've enjoyed great friendships with our customers for the last 50 years.**

Because of these relationships and times we've spent around the campfire chit chatting, we understand how RV's are used. The all-new redesigned Brookstone is the result of this inspiration. With Brookstone, our product team has been deliberate in our design to build the most user-friendly and functional luxury fifth wheel available. We've combined best in class towing for long journeys with well thought out storage solutions for all of your belongings. Our attention to detail will make you want to call Brookstone "home" and when you do, Brookstone will strengthen your passion for the great outdoors.



**The Brookstone 334RE provides for entertainment at its best!** Sit back and relax while watching your favorite movies on the 50" LED Smart television and home theater system. Plenty of space has been provided for after-market satellite receivers and game consoles.



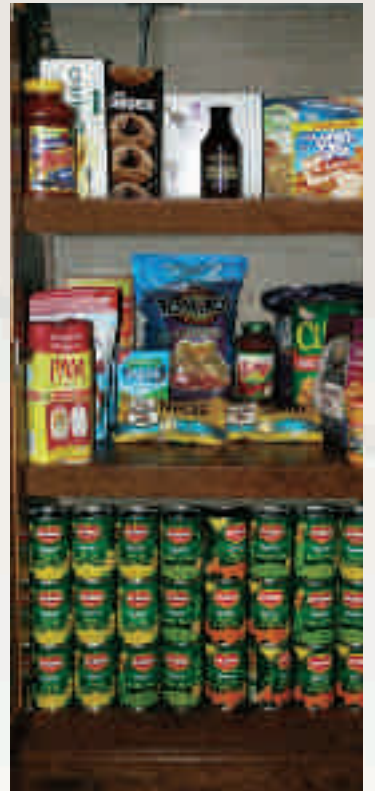
**Relaxation is a standard feature with Brookstone.** Whether you choose a standard hide-a-bed sofa or optional theater seating (shown below), Brookstone...was inspired for relaxation. Standard recliners (inset) with optional leather are available on most floor plans.



**The Brookstone kitchen is as functional as it is beautiful.** Our engineers have designed necessities such as a silverware drawer, utensil drawer, spice drawer, full size trash can, storage and more into every floor plan. Full-sized features like 30" over-the-range microwave, 22" gas oven with 3-burner range and optional 12 cubic foot refrigerator will satisfy the most discriminating of chefs. Additional features include a wine rack, huge pantries, coat closet/mini step ladder and broom closet, Dupont Corian kitchen countertops and optional dishwasher.







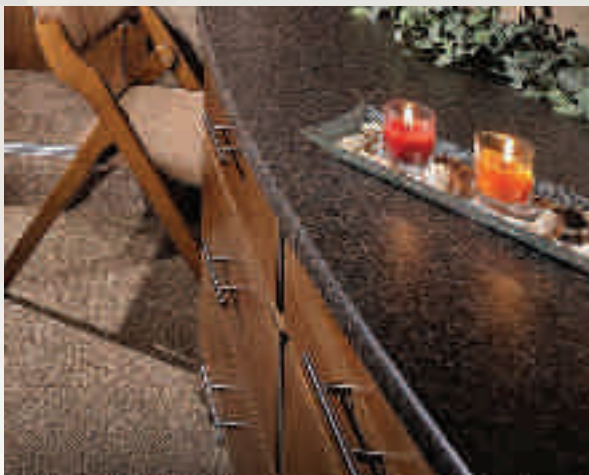


**The Suite Life by Brookstone.** Imagine relaxing in bed with your favorite book while lying on a queen or king memory foam mattress while the bed is in an inclined position. Sound too good to be true? Not with the Brookstone Bedroom Suite!





**Our engineers left no stone unturned when designing the Brookstone Bedroom Suite.** Beautiful and functional slide out fascia incorporates night stands and storage into its design. Full-sized clothes basket storage is neatly recessed beneath the end of the bed. The deepest drawers that you'll find in a bedroom on a fifth wheel will accommodate jeans and t-shirts. The large closet makes organization simple and is prepped for washer and dryer. The Brookstone Suite even provides a vanity/computer area in most bedrooms.



**Brookstone offers the look and feel of a residential bathroom.** Brookstone bathrooms feature “oversized” showers with sliding glass doors, residential vanity with large sink and a linen closet for towels and toiletries.



## **Pet Friendly, proudly endorsed by Pete!**

More than 70% of full time RVer's travel with pets so we inspired to make Brookstone Pet Friendly by installing the following features standard!

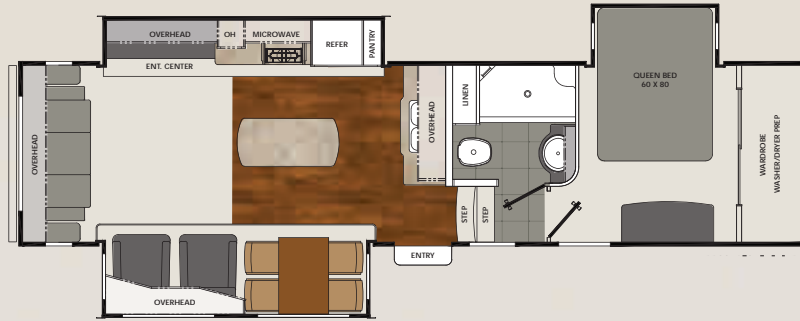
- Dedicated feeding station
- Exterior leash anchor



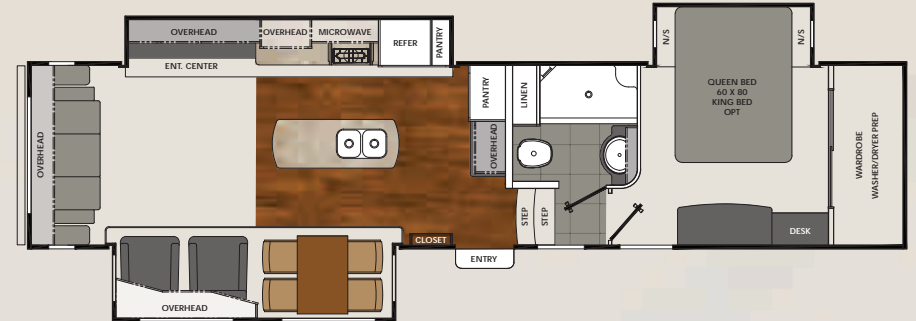


# FLOORPLANS

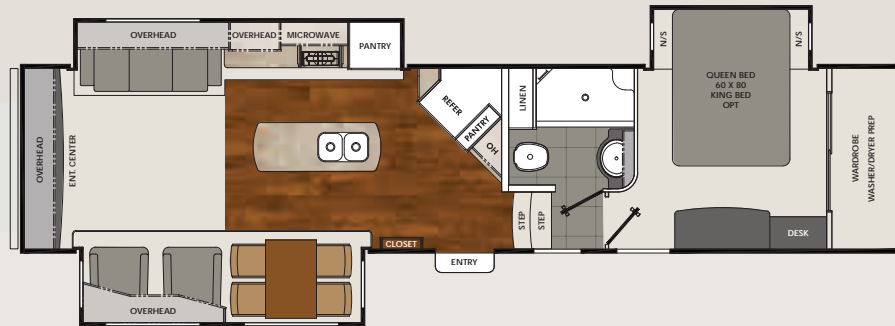
315RL



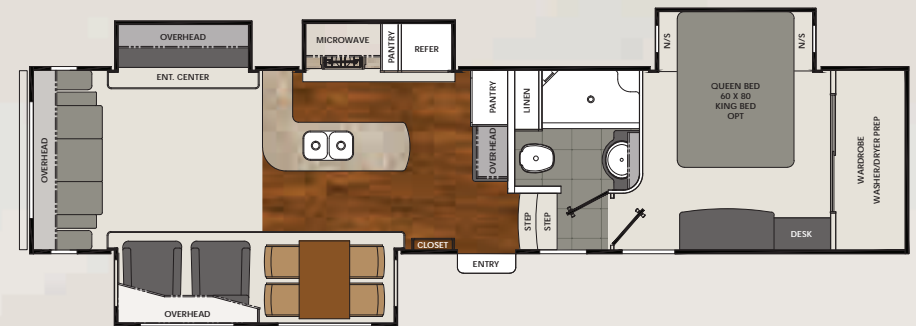
325RL



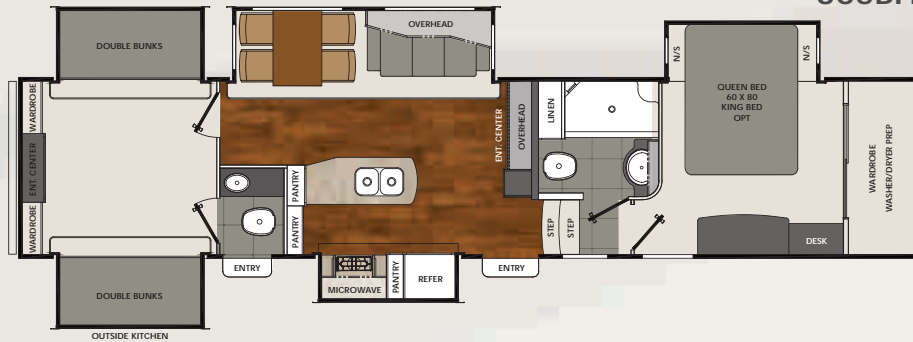
334RE



355RL



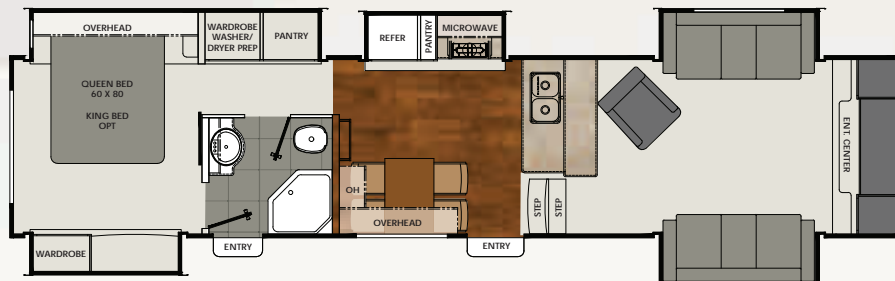
365BH



370RL



375FL



# STANDARDS & OPTIONS

## FOR THE JOURNEY PACKAGE

- Turn Tec Engineered Front Cap w/LED Light Bar
- Correct Track Suspension Alignment System
- 7,000 lb. Dexter Easy Lube Axles w/8-Lug Wheels
- 16" Radial Tires
- Aluminum Wheels
- MOR/ryde Suspension
- Electric Front Jacks
- Rear Electric Stabilizer Jacks
- Electric Awning
- Slam Latch Pass-Thru Storage Compartment
- Arctic Eskimo Package
- Radiant Technology Roof & Floor Insulation
- Heated & Enclosed Underbelly
- Vented Attic
- 15,000 BTU Central A/C
- Wire & Frame for 2nd A/C w/Remote Sensor & Dual Zones
- Power Vent in Bathroom
- 40,000 BTU Furnace
- 10 Gallon Gas/Electric Hot Water Heater
- Full System Water Filter
- 50 Amp Service
- Washer/Dryer Prep
- Aluminum Framed & Laminated Walls & Floors
- Arched Roof Rafters
- Outside Convenience Center
- Exterior TV Connection
- Black Tank Flush
- Digital TV Antenna w/Booster
- Independent Slide-Out Switches
- 12 Volt Disconnect Switch



## CONSUMER INSPIRED PACKAGE

- Pet Friendly Food Dish Storage & Exterior Leash Anchor
- Bedroom Vanity with Computer Work Station
- 18" Deep Bedroom Drawers
- Cell Phone Charging Station
- Clothes Basket Storage
- Bathroom Linen Closet
- 8 cu. ft. Refrigerator
- Full Size Kitchen Trash Can Storage
- Mini Step Ladder/Broom Closet
- Pots & Pans Drawer
- Silverware Drawer
- Kitchen Utensil Drawer
- Spice Drawer
- Wine Rack
- Corian Kitchen Countertops
- Stainless Steel Sink
- High Arch Pull-Out Faucet
- 30" Over-The-Range Microwave
- 50" Smart Television w/Keyboard
- AM/FM/CD/DVD Player
- Subwoofer
- Satellite TV Receiver Storage
- Freestanding Dinette with (2) Hi-Back Chairs & (2) Foldaway Chairs
- MCD Roller Night Shades
- Ceiling Fan
- LED Lighting
- (2) Lane Recliners – per floor plan
- Lane Hide-A-Bed Sofa
- 60" x 80" Memory Foam Mattress

## EQUIPMENT OPTIONS

- Bedroom 32" HD LED Television
- Low Profile Ducted 2nd 13,500 BTU A/C
- Power Vent Fan in Bedroom
- Power Vent Fan in Kitchen
- Power Vent Fan in Bathroom
- Tankless Hot Water Heater
- 12 cu. ft. Stainless Steel Refrigerator w/Ice Maker
- Central Vacuum
- Electric Fireplace
- Stainless Steel Dishwasher
- Generator Ready – Onan 5.5Kw Specs
- Onan Marquis Gold 5.5Kw – LP Generator

## EXTERIOR OPTIONS

- Fiberglass Rear Cap
- Frameless Windows
- Dual Pane Windows
- Slide-Out Awning Package
- 6-Point Electric Auto-Leveling System
- JT Strong Arms
- 16" Goodyear "G" Range Tires
- Trail Air Hitch

## INTERIOR OPTIONS

- Electric Incline Bed
- Wardrobe Slide-Out in Bedroom
- MCD Roller Day/Night Shades
- King Size Bed
- (2) Leather Recliners IPO Cloth
- Leather Hide-A-Bed Sofa IPO Cloth
- Leather Theater Seating IPO Recliners
- Leather Theater Seating IPO Sofa
- Booth Dinette IPO Free Standing Dinette



## SPECIFICATIONS

MODEL	315RL	325RL	334RE	355RL	365BH	370RL	375FL
Hitch Weight (lbs.)	2,350	2,395	2,270	2,330	2,340	2,520	2,400
Base Weight (lbs.)	11,230	11,460	11,820	11,920	12,945	12,860	12,290
GVWR (lbs.)	14,500	14,500	14,500	14,500	15,500	15,500	15,500
Cargo Capacity	3,270	3,040	2,680	2,580	2,555	2,640	3,210
Exterior Length*	34' 8"	37' 11"	37' 11"	37' 11"	39' 9"	39' 11"	39' 6"
Exterior Height	12' 11"	12' 11"	12' 11"	12' 11"	12' 11"	12' 11"	12' 11"
Exterior Width	96"	96"	96"	96"	96"	96"	96"
Fresh Water	70 gal.	70 gal.	70 gal.	70 gal.	70 gal.	70 gal.	70 gal.
Gray Water	90 gal.	90 gal.	90 gal.	90 gal.	90 gal.	90 gal.	90 gal.
Black Water	45 gal.	45 gal.	45 gal.	45 gal.	90 gal.	45 gal.	45 gal.
Awning Size	15'	17'	17'	17'	16'	11'	17'

\* Exterior length is determined from bumper to center of hitch pin.

**INSPIRED FOR**  
**THE JOURNEY AHEAD**





## Travel Easy™ Roadside Assistance

RVing is easier with Coachmen's Travel Easy™ Roadside Assistance provided FREE the first year of ownership to those who purchase a New Coachmen RV. Administered by Coach-Net, this service provides you with 24/7 operational, technical and emergency road service coverage. Also included is towing, fuel delivery, jump starts, lockout service, tire changes, mobile mechanic and unlimited technical assistance. Anywhere. Anytime. Travel Easy™ is the security of knowing that help is an easy phone call away.



423 N. Main Street • P.O. Box 30  
Middlebury, IN 46540

To learn more about Coachmen RV and our products and see how Coachmen is making the easy life easier, visit [www.coachmenrv.com](http://www.coachmenrv.com)



## Free One Year Membership – Coachmen Owners' Association

Coachmen is proud to sponsor the largest manufacturer sponsored camping club in North America ... Coachmen Owners' Association (COA). COA provides a broad breadth of value propositions for our owners including: planned trips/ tours and rallies at bulk rate discounts, free trip routing, free campground directory, free Easy RVing magazine, theme park discounts, fuel discounts, mail forwarding, a dedicated COA web site, local and state club activities and Caravan Chapter membership opportunities. Most importantly, COA enhances the Coachmen ownership and RV lifestyle experience.

Every new Coachmen RV buyer is eligible for a 1 Year FREE membership in the Coachmen Owners' Association. It all adds up to an easy ownership experience!



**Forest River, Inc. encourages our customers to purchase their Forest River products from a local dealership whenever possible for the following reasons:**

- 1) Forest River, Inc. dealers are independently owned and operated businesses so priority service and scheduling is at their discretion and is often provided to customers that purchased their unit at that dealership.
- 2) Purchasing locally allows customers to establish meaningful relationships with a dealer, enhancing the RV experience through assistance with product questions, user tips or RV regulations for your state or country, and much more!
- 3) Canadian customers must meet requirements to bring an RV purchased out of the country to their home. These requirements may involve additional inspections and certifications, taxes and fees. Your local Canadian Dealer is a professional at meeting these requirements.
- 4) Scheduling timely warranty repairs and adjustments through a local dealership provides far greater flexibility and convenience to you, the customer!

It is the goal of Forest River, Inc. that all of our RV owners fully enjoy the RV experience and that customer satisfaction meets or exceeds their expectations!



**Learn More**  
Scan this barcode using a QR Reader on your smart phone to learn more about Forest River.



A Berkshire Hathaway company.

All information contained in this brochure is believed to be accurate at the time of publication. However, during the model year, it may be necessary to make revisions and Coachmen reserves the right to make all such changes without notice, including prices, colors, materials, equipment and specifications as well as the addition of new models and the discontinuance of models shown in this brochure. Therefore, please consult with your Coachmen dealer and confirm the existence of any materials, design or specifications that are material to your purchase decision. 1/14

©Copyright 2014 Coachmen RV a Division of Forest River Inc – All Rights Reserved.



**Your Brookstone Dealer**