



ENCOUNTER

by Coachmen



Coachmen
Leader to the Great Outdoors.

ENCOUNTER
by Coachmen



DEFY EXPECTATIONS AT EVERY TURN.

Life's too short to be limited by expectations. That's the spirit behind the new Encounter by Coachmen. It's packed with far more than you'd expect from a Class-A gas-powered motorhome. More power. More luxury. More amenities. The only thing about it that isn't more? The price.

Exterior Color Selections



Encounter is available in three full-body paint styles, including Capri (left), Chesapeake (right), and Sanibel (pictured on cover).



BE THE ENVY OF THE HIGHWAY IN THE NEW ENCOUNTER.

Beauty and brawn. The Encounter combines both into one elegant, well-oiled machine.

Its full-body paint job will turn heads as you coast down the highway. Its crowned, laminated fiberglass roof will give you unparalleled protection in the toughest conditions. And its 22,000-lb. Ford chassis is strong enough to ensure durability while still allowing for the kind of amenities you'd normally only get in a diesel motorhome.

In short, Encounter is everything you'd expect in a high-quality motorhome—and more.

Features:

- Full basement featuring pass-through storage for oversized gear and equipment
- Upgraded, heavy-duty, double power step for more secure entry
- Upgraded power-heated exterior chrome mirrors
- Side cameras with color monitor and frameless tinted windows
- Optional outdoor 32" LCD TV with DVD player

WELCOME TO THE GREAT INDOORS.

We're all familiar with the great outdoors. But the galley of the Encounter is truly a wonder to behold.

Grandeur. Beauty. Charm. It's all right here, starting with an optional snap-stone tile floor that looks beautiful and provides a consistently level floor and grout line. Also available is a stainless-steel appliance package—a perfect complement to the elegant surrounding environment.

Every last detail—from the two-tone dinette cushions to the quilted, two-tone driver and passenger seats—adds up to an indoor experience that is unquestionably great.

Features:

- L-shape sofa with hide-a-bed pulls out to sit in front of the electric fireplace (37SA)
- All-new cabinetry features new trim work and slide-out fascia
- Full glass tile backsplash
- Optional stainless-steel appliance package and tile floor (*featured in photos*)
- Solid-surface kitchen countertop



Encounter 37SA shown above



ELEGANCE EVERYWHERE YOU LOOK.

Elegance: In the end, it's what sets Encounter apart from its peers.

You may think you need a diesel to experience the highest level of luxury available in a motorhome. But once you step inside Encounter, you're likely to change your mind. And once you compare costs, you almost definitely will.

The Encounter gives you everything you could want in a high-end motorhome—except for the high-end price.

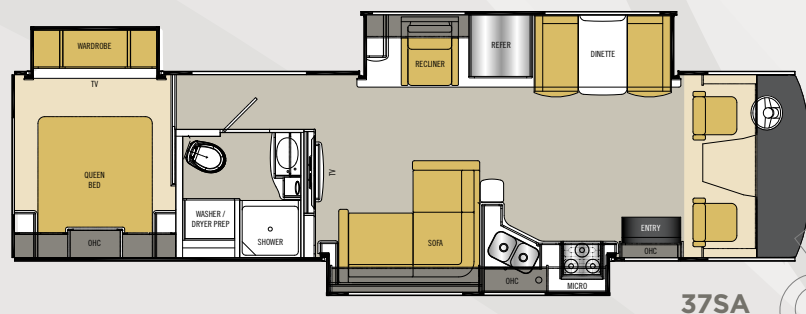
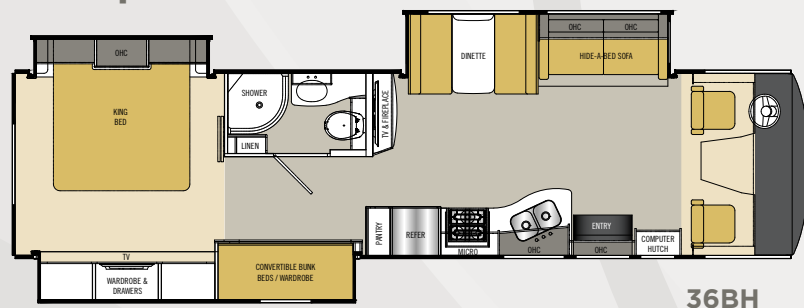
Features:

- Upgraded designer headboard above bed
- New cabinetry above headboard features stylishly pronounced center cabinet
- A 32" LCD TV with DVD player conceals hidden storage compartment in the bedroom
- Fiberglass shower with glass door
- Convenient power sources mean you'll always be connected to the world



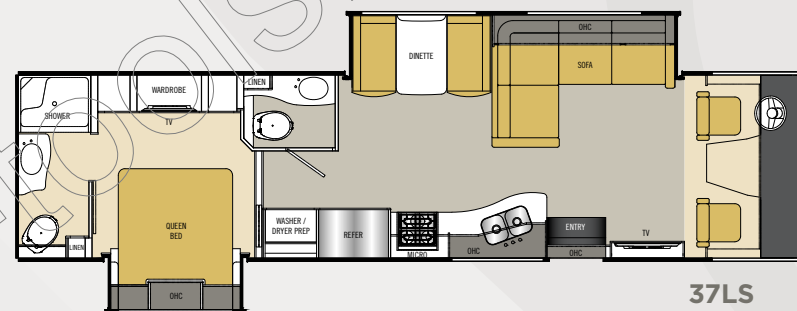
Encounter 37SA shown above

Floorplans:

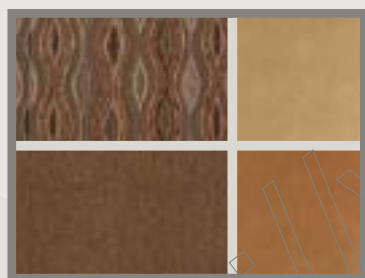


Available in three floorplans, three interior wood color selections, and three fabric selections, you can customize the Encounter to suit your personal needs and style.

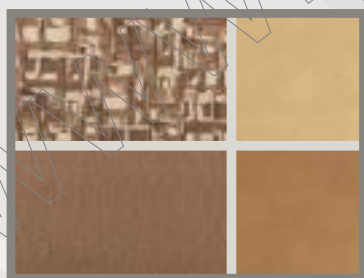
The end result? A motorhome that makes you feel right at home, no matter where you are.



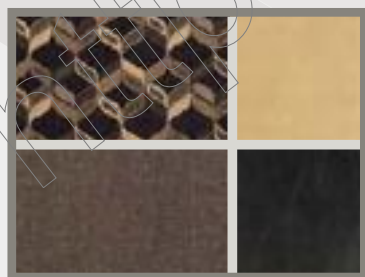
Interior Decor Color Selections



Cocoa Brown



Café Latte



Black Onyx

Interior Wood Color Selections



Spiced Maple



Honey Glazed Maple



Coastal Glazed Maple

STANDARD FEATURES

INTERIOR APPOINTMENTS

Padded Vinyl Ceiling
Mulan Oat Wall Board - Coach
Glo Pecan Wall Board - Accent
Vinyl Tile Floor Throughout
Satin Nickel Hardware
Raised Panel Hardwood Cab Doors
Frameless Tinted Windows w/
Safety Glass
Reclining / Swivel Pilot Seats
Visionary Sofa Hide-A-Bed
Dream Dinette
Day/Night Coach, Night Bedroom
Ent. Computer Hutch (36BH)
Ball Bearing Drawer Guides Throughout

INTERIOR EQUIPMENT

AM/FM Radio and CD Player
Cable TV Jack
LP Leak Alarm and Smoke Detector
Carbon Monoxide Detector
Fire Extinguisher
TV Antenna and Roto Package
39" LCD TV Coach & DVD Player
(36BH & 37LS)
42" LCD TV Coach & DVD Player (37SA)
Satellite Prep Wire to Roof
Electric Fireplace

GALLEY

Solid Surface Countertop
Single Lever High Kitchen Faucet
w/ Sprayer
Stainless-Steel Double Bowl
Kitchen Sink
Flush-Mounted 3-Burner Range w/ Oven
30" OTR Microwave Oven
8-Cu. Ft. Double Door Refrigerator
Three-Speed Fantastic Power Fan

Solid Surface Range & Sink Cover
Glass Tile Backsplash
Pop-Up Recept w/ USB Ports

BATH AND WATER

Porcelain Toilet w/ Foot Flush & Sprayer
Fiberglass Shower
Glass Shower Door
Power Bath Vent
10-Gallon Gas/Elec - E.I. Water Heater
Demand Water Pump
Shower Skylight
Whole Coach Water Filter (EXC. CSA)
Stackable Washer/Dryer Prep
(37SA & 37LS)

SLEEPING

King Bed 72x80 (36BH)
Queen Bed 60x74 (37SA & 37LS)
Bunk beds (36BH only)
w/ Privacy Drapes
Deluxe Innerspring Mattress -
Bedsread
32" LCD TV Bedroom and DVD Player
Designer Headboard (N/A 37LS)

ELECTRICAL/HEATING/AC

LED Interior Ceiling Lighting
30' 50-Amp Power Cord
55-Amp, 110/12-Volt Power Converter
GFI Circuit
Outside Recept (DS)
Emergency Start Switch
Lighted Trunk Storage Boxes
Patio Light
34,000-BTU E.I. Furnace (N/A 37SA)
20,000-BTU E.I. Furnace (2)
(37SA Only)
13,500-BTU Roof Air Conditioner-Ducted
2nd 13,500-BTU Roof AC

Dual Coach Batteries
5.5 Onan Generator
Coach Command Center

AUTOMOTIVE/EXTERIOR

Tilt Steering Wheel
Cruise Control
Intermittent Wipers
High Gloss Exterior Walls
22.5 Radial Tires
22.5 Aluminum Rims
Rear Mud Flaps Only
Power Entrance Step-Double
Crowned, Laminated Fiberglass Roof
Full Basement w/ Pass-Thru Storage
Aluminum Side Hinge Trunk Doors
Fiberglass Front and Rear Caps
Dead Bolt Lock-Entrance Door
28" Radius Entry Door
Power Patio Awning
5,000-lb. Towing Hitch w/ 7-Way Plug
Rear Mounted Roof Ladder
Heated Remote Exterior Mirrors
Automatic Leveling Jacks
Slide-Out Room Awning(s)
Full Body Paint
20-Gallon LP Tank
Review Camera w/ Color Monitor
Side Cameras
Bronze Dash Inserts
Cupholder on Passenger Wall
Cockpit MCD Power Shade & Manual
Side Shades
Frameless Tinted Windows
w/ Safety Glass

OPTIONAL FEATURES

Upgraded Tile Floor
Euro Chair (36BH Only)
6-Way Power Driver's Seat
Dual Pane Windows
Upgrade Mattress
Outside Entertainment w/ 32" TV
Outside TV Option Includes an
Additional DVD Player
Diamond Shield Protection
Home Theater
TV and DVD Player for Each Bunk
(36 BH Only)
39" Cockpit Mounted TV
Valve Stem Extenders
CSA Upfit
⁽¹⁾CD-MVSA (Canadian Motor Vehicle
Safety Act)
Travel Easy Roadside Assistance
(Coach-Net)

STAINLESS APPLIANCE PACKAGE

18-Cu. Ft. Stainless Residential Refrigerator
Stainless OTR or Convection Microwave
17" Stainless Range/Oven or Cooktop
1,000-Watt Inverter W/2 Six Volt Batteries

Notes:

(1) Mandatory For All Canadian Provinces



FREE One Year Membership – Coachmen Owners Association!

Coachmen is proud to sponsor the largest manufacturer sponsored camping club in North America ... Coachmen Owners' Association (COA). COA provides you a world of ways to enjoy your RV. This is **FUN ON OVERDRIVE** and provides: Free Trip Routing, Exciting Tours & Rallies, Free Campground Directory, Local/State Club Activities, Easy RVing Magazine Free, Theme Park Discounts, Fuel Discounts, Free onebigplanet® Memberships with discounts at 180,000 merchants and Much More!

Every new Coachmen RV buyer is eligible for a 1 Year FREE membership in the Coachmen Owners' Association. It all adds up to an easy ownership experience!

SPECIFICATIONS

CLASS A GAS	36BH	37LS	37SA
FORD ENGINE V-10 6.8L 3-Valve	362 HP/457 TRQ	362 HP/457 TRQ	362 HP/457 TRQ
WHEEL BASE	242"	242"	242"
GVWR	22,000 lbs	22,000 lbs	22,000 lbs
GCWR	26,000 lbs	26,000 lbs	26,000 lbs
FUEL CAPACITY	80 gal	80 gal	80 gal
LP GAS CAPACITY (gallons)	20 gal	20 gal	20 gal
FURNACE (BTUs)	34,000	34,000	(2) 20,000
EXTERIOR LENGTH (w/o ladder)	37' 4"	37' 4"	37' 4"
EXTERIOR HEIGHT (with AC)	12' 7"	12' 7"	12' 7"
EXTERIOR WIDTH	102"	102"	102"
FRESH WATER	70 gal	70 gal	70 gal
GREY WATER	45 gal	45 gal	45 gal
BLACK WATER	45 gal	45/45 gal	45 gal
WATER HEATER	10 gal	10 gal	10 gal
AWNING SIZE	14'	18'	22'

GVWR (Gross Vehicle Weight Rating): The maximum permissible weight of the unit, including the unloaded vehicle weight (UVW) plus all fluids, cargo, optional equipment and accessories. For safety and product performance, do not exceed the GVWR.

GCWR (Gross Combined Weight Rating): The maximum total weight of the loaded unit, plus a tow vehicle. This includes the weight of both the unit and tow vehicle, fuel for each, all other fluids, cargo, occupants, optional equipment and accessories.

Important Note: All capacities are approximate, and all dimensions are nominal. Coachmen motorhomes are designed to allow for a wide variety of uses, extended trips with two people or short trips with multiple people. Accordingly, each unit allows ample room for sleeping, seating, fluids and cargo. While the customer is the beneficiary of this design, the customer also bears the responsibility to select the proper combination of passengers, cargo, load, and tow vehicle without exceeding the chassis weight capabilities. Consumer may need additional braking capacity to tow loads greater than 1,000 pounds.

Seat belts should always be worn for passenger safety. Seat belts are provided at most locations to allow convenience in selecting which

seat to occupy. However, it is not intended that all seating positions equipped with a seat belt may be occupied while the vehicle is in motion, without regard to other weight factors.

All Coachmen motorhomes are designed to ensure that the number of passengers allowed while the vehicle is in motion will always at least equal the stated sleeping capacity. Though extra seat belts may be provided, for your safety and the proper operation of your vehicle, limit your passengers to the number allowed by the Net Carrying Capacity of your vehicle.

All information contained in this brochure is believed to be accurate at the time of publication. However, during the model year, it may be necessary to make revisions and Coachmen reserves the right to make all such changes without notice, including prices, colors, materials, equipment and specifications as well as the addition of new models and the discontinuance of models shown in this brochure. Therefore, please consult with your Coachmen dealer and confirm the existence of any materials, design or specifications that are material to your purchase decision.

© Copyright 2014 Coachmen RV a Division of Forest River Inc. - All Rights Reserved



Forest River Inc. encourages our customers to purchase their Forest River products from a local dealership whenever possible because of the following reasons:

1. Forest River, Inc. dealers are independently owned and operated businesses so priority service and scheduling is at their discretion and is often provided to customers that purchased their unit at that dealership.
2. Purchasing locally allows customers to establish meaningful relationships with a dealer, enhancing the RV experience through assistance with product questions, user tips or RV regulations for your state or country, and much more!
3. Canadian customers must meet requirements to bring an RV purchased out of the country to their home. These requirements may involve additional inspections and certifications, taxes and fees. Your local Canadian dealer is a professional at meeting these requirements.
4. Scheduling timely warranty repairs and adjustments through a local dealership provides far greater flexibility and convenience to you, the customer!

It is the goal of Forest River, Inc. that all of our RV owners fully enjoy the RV experience and that customer satisfaction meets or exceeds their expectations!



Travel Easy™ Roadside Assistance!

RVing is easier with Coachmen's Travel Easy™ Roadside Assistance provided FREE the first year of ownership to those who purchase a New Coachmen RV. Administered by Coach-Net, this service provides you with 24/7 operational, technical and emergency road service coverage. Also included is towing, fuel delivery, jump starts, lockout service, tire changes, mobile mechanic and unlimited technical assistance. Anywhere. Anytime. Travel Easy™ is the security of knowing that help is an easy phone call away.



Coachmen RV, a Division of Forest River Inc.,
A Berkshire Hathaway Company
423 N. Main St., P.O. Box 30, Middlebury, IN 46540

To learn more about Coachmen RV and our products and see how Coachmen is making the easy life easier, visit www.coachmenrv.com.



Learn More
Scan this barcode using
a QR Reader on your
smart phone to learn
more about Forest River.

