

SERIES

FEEL THE STING OF SCORPION
TOY HAULING
FOLDING CAMPING TRAILERS!

2006

SCORPION



S1 MODEL shown with optional canopy and add-a-room.



SCORPION

NO MORE
RIDING HARD
& GOING HOME
WET!



S3 COMBINES THE COZINESS OF CAMPING IN A TENT (except on a roomy and restful mattress) with the added comfort of a futon, loads of onboard gear storage, and a 59" x 96" cargo deck.

S1 & S2 feature full galleys and two pull-out sleeping areas. S2 (shown below) includes a comfortable dining/seating area.

Fleetwood blazes a new trail with **SCORPION** toy hauling folding camping trailers.

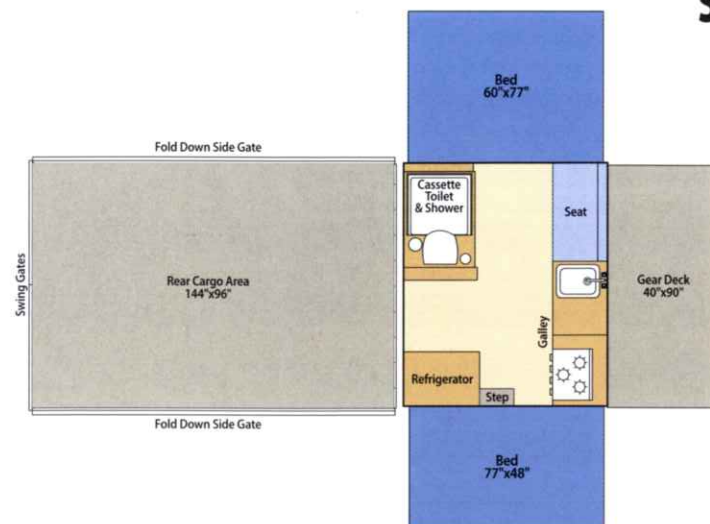
SCORPIONS keep the dirt and odor of your motorsport vehicles away from your living quarters, provide amenities to comfort weary bodies, and create an instant campsite where no campground exists. For 2006, the **SCORPION** line is even further ahead of the pack with 3 models ideally suited to your toys, your tastes and your tow vehicle.

Feel the sting!

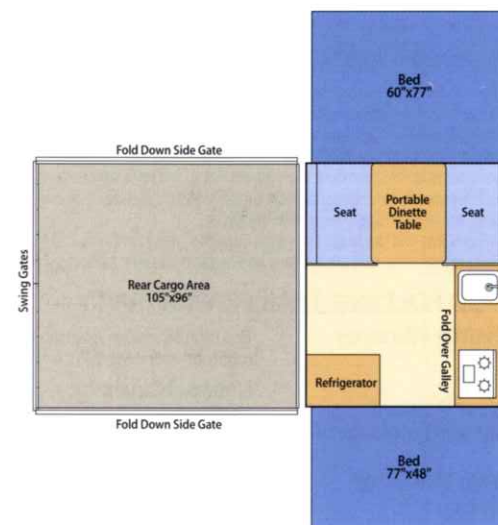
S1 FEATURES A COMPLETE BATHROOM
with built-in cassette potti and shower.



S1

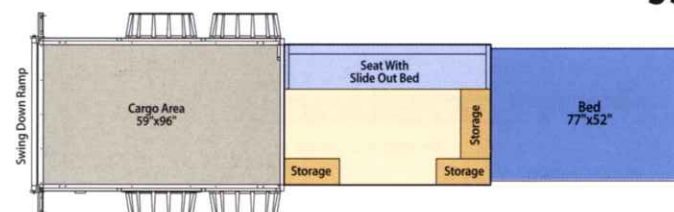


S2



Shown with LP tank and cover – part of the optional furnace package.

S3



SCORPION WEIGHTS AND MEASURES	S1	S2	S3
Box Size (inside length)	8'	8'	6'-10"
Gross Vehicle Weight Rating (GVWR), (lbs)	6,600	5,400	3,535
Unloaded Vehicle Weight (UVW), (lbs)	3,850	2,960	1,765
Unloaded Tongue Weight (UTW), (lbs)	980	570	390
Maximum Carrying Capacity (MCC), (lbs)	2,750	2,440	1,740
Front Gear Deck Carrying Capacity (lbs)	150	N/A	N/A
Rear Gear Deck Carrying Capacity (lbs)	2,000	1,800	1,500
Remaining Carrying Capacity (Trailer interior) (lbs)	600	640	240
Cabinet Storage (cu. ft.)	5	19	16
Tire Size	ST205/75R15C	ST205/75R15C	ST205/65-10
Open Dimensions (length x width)	28'-4" x 18'-3"	22'-2" x 18'-3"	22'-4" x 6'-7"
Closed Dimensions (length x width)	27'-7" x 8'-6"	21'-5" x 8'-6"	15'-4" x 6'-7"
Open Height	10'-2"	9'-6"	8'-8"
Closed Height	79"	68"	53"
Interior Height	85"	80"	80"
Water Storage Capacity (Main Tank)	20 gallons	20 gallons	N/A
Water Storage Tank Location (Main Tank)	Under Floor	Under Floor	N/A
Water Storage Capacity w/std Water Heater	26 gallons	26 gallons	N/A
Converter / Charger Amperage	35	35	(25-Furnace equipped model only)

- GVWR (Gross Vehicle Weight Rating) is the maximum permissible weight of this trailer when fully loaded. It includes all weight at the trailer axle(s) and tongue or pin.
- All dry weights are based on the standard model and do not include optional features or equipment.
- Maximum Carrying Capacity is determined by subtracting Gross Dry Weight from the GVWR. The Maximum Carry Capacity does NOT include the weight of fresh water, propane, or water in the water heater.
- Water weight equals 8.3 lbs per gallon. LP Gas weight equals 4.2 lbs. per gallon.
- Hitch weights are dependent upon how the trailer is equipped with options, on board cargo and tank fluid levels. Actual hitch weights may be higher or lower than shown. It is recommended that the tow vehicle and hitch for your trailer have sufficient capacity to accommodate actual usage.
- Some accessories and options may be dealer installed.
- Installed option weights will decrease the cargo carrying capacity. Consult Owner's Manual for accessory weights.
- Refrigerator, furnace, cassette toilet, hot water and outside shower are factory installed options.

FLEETWOOD FOLDING TRAILER WARRANTY

Limited Lifetime Warranty
Lift System.

Limited 5 Year Warranty
Roof Assembly and Tent Material.

Limited 1 Year Warranty
Hitch to Bumper.

The limited lifetime warranty on specified structural components covers repair of defective parts, labor, and freight for the first full year and repair of specified defective parts and labor for years two and beyond from the date of purchase...for as long as you own your trailer.

National Coverage Traveling to Spokane? Buffalo? We've got you covered with one of the nation's largest trained service networks. In fact, **335 Fleetwood Folding Trailer dealers** are just a phone call away.

IMPORTANT-PLEASE READ Product information, photography and illustrations included in this publication were as accurate as possible at the time of printing. For further product information and changes, please visit our website at www.fleetwoodrv.com/foldingtrailers or contact your local Fleetwood dealer. Prices, materials, design and specifications are subject to change without notice. All weights, fuel, liquid capacities and dimensions are approximate. Fleetwood has designed its recreational vehicles to provide a variety of uses for customers. Each vehicle features optimal seating, sleeping, storage and fluid capacities. The user is responsible for selecting the proper combination of loads (i.e.: occupants, equipment, fluids, cargo, etc.) to ensure that the vehicle's capacities are not exceeded.

FLEETWOODRV.COM To locate a dealer near you, visit our website or call 1-800-444-4905. We can also be contacted at Fleetwood Customer Relations, P.O. Box 7638, Riverside, CA 92513-7638.

Your local Fleetwood Folding Trailer dealer is:



www.fleetwoodrv.com

For complete info see your Fleetwood Folding Trailer dealer. © 2005. Fleetwood Enterprises, Inc.
Printed in the USA.

SCORPION STANDARD FEATURES (All Models)

- Tubular steel frame with protected trailer wiring
- Tandem axles
- Leaf spring suspension
- Center mount dolly jack with wheel
- 4 crank-down stabilizer jacks
- EZ lube axles with 5 bolt hubs
- Electric brakes
- Battery mount with wiring harness
- Seamless Weyerhaeuser Structurwood® floor and bed platforms
- Painted, permanently attached, self-storing bed supports
- Positive locking safety chains
- Stainless steel "Posi-Lock" lift system
- Full perimeter aluminum bed frames
- Sunbrella® 302 tenting for breathability
- Fine mesh window screening
- Clear view window vinyl
- One-piece aluminum framed screen door
- 12 volt interior lighting
- Bed area lined privacy curtains
- Privacy lined window curtains
- All weather non-slip coated deck surface
- Silver and black interior and exterior
- Waterproof plastic countertops
- Cargo deck illumination lights
- Painted interior bed tenting supports
- Painted steel seat frames
- Bumper

SCORPION S1 AND S2 MODELS ONLY

- Sand pads on stabilizer jacks
- Side-hinged rear gates, swing down side rails
- Refrigerator – 3-way operation
3.0 cu. ft. in S1
1.9 cu. ft. in S2
- Water heater; Furnace
- Interior stove
S1 model features LP oven
- Bumper steps
- 2-20 lb. LP tanks with vinyl covers
- Exterior LP hook-up for outside cooking appliance
- Stainless steel sink with 12 volt water pump
- Exterior patio light and a 110 volt outlet
- Stereo with CD player, 2 speakers; CATV connection
- LP detector alarm, CO detector/alarm, fire extinguisher
- Dual battery boxes (batteries not included)
- Outside wash-down station

treadlightly!
LEAVING A GOOD IMPRESSION

