

# FEATURES & SPECIFICATIONS

# Inspire

COUNTRY COACH

Introducing A Whole New Country Coach for

04

## Chassis Specifications

- DynoMax<sup>®</sup> chassis: semi-monocoque construction:
  - 8" x 3"x ¼" tube
  - w/welded components
  - 10,000 lb. Class III receiver hitch w/ electrical connector and chrome cover
  - 2-year/unlimited mile chassis warranty
- GVWR: 32,800 lbs.
- GCWR: 42,800 lbs.
- 40' Genoa Wheelbase: 277"
- 40' DaVinci Wheelbase: 265"
- 36' Siena Wheelbase: 229"
- Engine: Cummins 8.3 ISC 350HP w/1050 lb/ft torque at 1400 RPM
  - Exhaust brake w/brake light activation
  - Electronic Engine Protection (EEP)
  - Alternator: 160 amps
  - 120 volt, 1,000 watt engine block heater
  - 5-year/100,000 mile engine warranty
- Transmission: Allison 3000 MH
  - Six speed automatic with 2 overdrive gears
  - Keypad electronic shifter w/ digital display
  - 3-year/unlimited mile warranty
- Driveline: Dana Spicer 1710 Series
- Suspension:
  - Front—Holland/Neway independent front suspension model IFS-114-CC rated at 12,800 lbs. GAWR w/ double wishbone construction and full air suspension system w/electric manual dump, drum brakes, IPD anti-sway bar, and Koni adjustable shock absorbers
  - Rear—Holland/Neway rear air suspension system w/ electric manual dump and Koni adjustable shock absorbers
- Drive axle: Meritor model RS-21145 rated at 20,000 lbs. GAWR w/ 4.63 differential ratio
- Steering: TRW TAS 85 integral, full time hydraulic power steering gear w/tilt & telescoping column
  - 18" SmartWheel multiplexed leather-wrapped steering wheel. Controls for horn, head light flash, marker light flash, cruise functions, wiper functions and high beam light
  - 50° turning angle and 23.5 to 1 steering ratio
- Electronic cruise control
- Parking brake: Spring applied, air release on rear drum brakes
- Teleflex adjustable electronic throttle and brake pedal

- Service brakes: full air brakes with ABS and automatic slack adjusters
  - 16.5" x 5" front axle
  - 16.5" x 7" rear axle
- Tires: Steel belted radials 275/70 R x 22.5 (6)
- Wheels:
  - Front, two 8.25" x 22.5" aluminum alloy wheels
  - Rear, two 8.25" x 22.5" aluminum alloy wheels and two 8.25"x 22.5" inner dual steel wheels
- Battery: One heavy duty 8D w/12 volt disconnect
- Fuel capacity: 110 gallons (dual fuel fills, driver and passenger sides)
- Service center/storage box: inverter, reader ports, circuit breakers, chassis battery disconnect
- Light w/remote reel
- Emergency Roadside Service

## Construction Highlights

- 102" wide body
- 1-7/8" sidewalls with 1-1/2" steel tube structural framing
- 96-1/2" interior width
- **Finished interior height: 85"**
- Vinyl padded ceiling

- 2-1/8" laminated floor w/ 1-1/2" steel tube structural framing
- Fiberglass exterior with aluminum skirts & doors
- Exterior riding height: 12' 9" (including roof air)
- One piece laminated fiberglass roof with steel tube framing and center ducted roof A/C
- Power Gear slide room mechanisms
- Steel framed slide rooms with sloped fiberglass roof for water drainage
- Laminated composite floor (2 forward slides)

## Driver Compartment Amenities

- 6-way power operated driver's seat
- Custom contoured dash and overhead w/instrumentation
- Teleflex gauges include: speedometer, tachometer, dual air pressure, oil pressure, transmission temperature, voltmeter, water temperature, fuel, odometer, trip meter
- Wrap around windshield w/shade band
- Power Gear Auto Leveling panel
- Rear view monitor

- 18" SmartWheel multiplexed steering wheel wrapped in leather. Equipped w/controls for horn, head light flash, marker light flash, cruise functions, wiper functions and high beam light
- Privacy drape
- Heating/cooling/defrost unit in dash
- Windshield wipers w/delay and washers
- Electronic power sun visors
- Panasonic AM/FM radio w/ CD player and two living room and two bedroom speakers
- Passenger side control panels with step slide cover, porch light, ceiling lights, entry step, and domestic battery disconnect switches w/ battery switch indicator lamp
- Driver and passenger side map lights
- Side view mirror power controls
- Cup holders
- 2-speed 12 volt dash fans
- Pre-wired for CB radio

### **General Conveniences**

- Panasonic 27" flat screen stereo TV in overhead dash
- Panasonic four head VCR w/ remote control

- Boosted cable antenna switch box
- Fluorescent and incandescent lighting throughout
- Custom crafted oak cabinetry and woodwork
- Decorative lighting in bedroom and living room
- Power Gear 4-point computer assisted hydraulic leveling system
- TV antenna
- Centrally located relay switches (all slide rooms)
- Intellitec EMS system monitor panel
- Pre-plumbed for optional washer/dryer
- Telephone jacks
- Smoke detector
- Carbon monoxide detector
- LP gas detector
- Entry door grab bar
- Tension mount day/night window shades in living/dinette/bedroom
- Mini-blinds in galley/bathroom
- Power step slide cover
- Fabric wrapped window treatments in living area
- Carpeted living room
- Dining area: Pedestal style wood dining table w/ two chairs
- Living area:
  - Passenger side sofa

- Driver side occasional table and chair, or hide-a-bed (depending on floorplan)

## **Galley Amenities**

- Microwave w/ power hood and recirculating filter
- 3-burner cooktop with solid surface cover
- 12 cu. ft. Norcold 4 door refer with ice maker
- Custom solid surface countertops w/ edge detail and tile backsplash
  - Solid surface splashguard on end of galley countertops
- Stainless steel galley sink
- Pantry
- Custom tile flooring
- Fantastic Fan with rain sensor, automatic vent, remote switch and double dome

## **Bath Amenities**

- Solid surface countertop w/edge detail and tile backsplash
- Porcelain vanity sink w/ coordinating fixtures
- Large vanity overhead w/ mirrored doors
- Decorative vanity bar light
- Water pump switch

- Fantastic Fan with rain sensor, automatic vent, remote switch and double dome
- Hand held shower unit
- Skylight in shower
- Pocket privacy doors
- Custom tile flooring

## **Bedroom Amenities**

- Queen-size bed
- Bedspread with custom accessory pillows
- Sliding mirror wardrobe
- Carpeted floor
- Clothes dresser
- Tension-mount day/night shade window treatment
- Fabric wrapped window treatments
- 20" Panasonic TV w/ remote control

## **Heating and Cooling Systems**

- 35,000 BTU and 20,000 BTU furnaces
- (2) 13,500 BTU Dometic roof A/C's with in-ceiling ducting
- Dash area A/C and heating controls

## **Power Sources**

- Onan 7.5kw Quiet Diesel generator w/ remote start/stop

- 2000 watt inverter/converter
- Four 6 volt house batteries w/ 12 volt disconnect switch
- 50 amp shore cord w/ 30 amp adapter
- 50 amp shore service surge protector

## Plumbing Features

- Atwood 10 gallon gas/electric water heater
- 12 volt on demand water pump
- Water filtration system
- Pre-plumbed and pre-wired for washer/dryer
- Black water tank flush system
- Electronic tank monitoring system
- Heated and insulated fiberglass plumbing bay

## Tank Capacities

- 100 gallons fresh water
- 52 gallons black water
- 68 gallons gray water
- 31.3 gallon (useable volume) LP tank
- 110 gallons diesel fuel

## Exterior Conveniences

- Powder-coated steel frame structure entry door
  - Power locks
  - Keyless entry

- Electric entry doorstep w/ automatic override at ignition
- TV antenna
- Chrome, heated, dual remote control cab mirrors
- Awning package (patio, entry door, bedroom window and all slide rooms)
- Large halogen headlights
- Roof mounted chrome dual air horns
- Exterior plumbing bay w/ manual dump valves, holding tank rinsing system (waste only) and hot/cold faucet w/ handheld shower wand
- Exterior bay cable TV and telephone hookups
- Lighted exterior entry assist grab bar
- Four Power Gear hydraulic leveling jacks
- Fog lamps
- Four curb lights
- Marker lights
- Lighted storage bays w/carpeted liners and insulated aluminum bay doors
- Sikkens full body exterior paint

## Slide-Out Special Features

- Power Gear electric slide-out hardware w/automatic brake
- Steel framed slide rooms with fiberglass roofs
- Awnings extend/retract with slide rooms
- Flat floor living room
- Centrally located switches for slide rooms

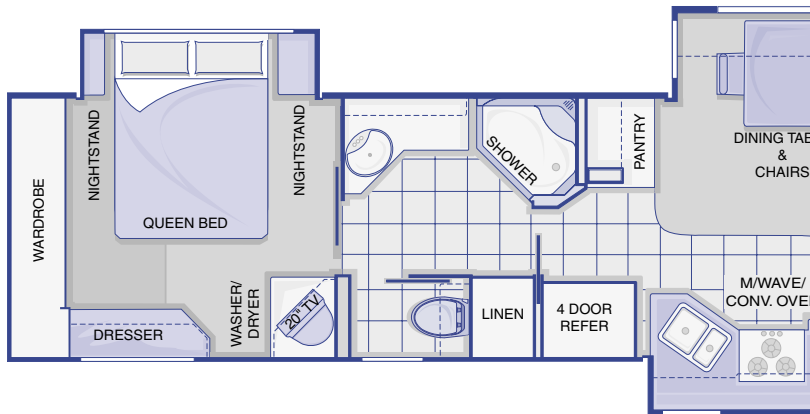
## Optional Equipment

- **Luxury Package:**
  - Heat pumps in dual Dometic roof A/C's
  - Passenger seat w/ 6-way power and foot rest
  - Panasonic home theater system w/ DVD and surround sound speakers
- **Digital Projection Cinema Package**
  - (Must be ordered with Luxury Package)
  - 68" projection screen TV
  - Full-function remote control w/ one touch automatic picture adjustment
  - Black-out shades in living area

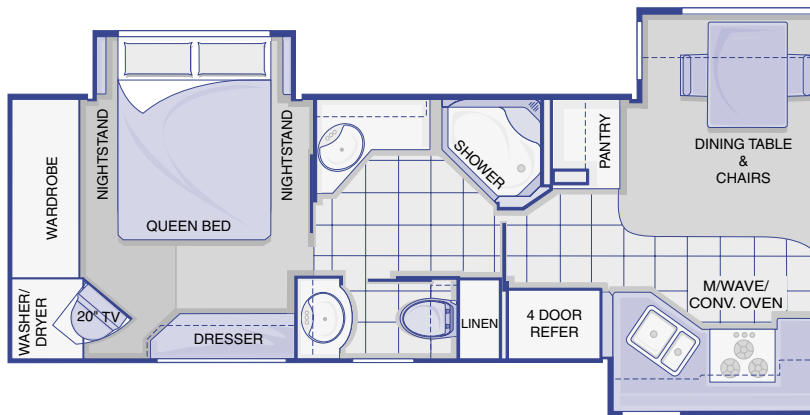
- **Convenience Package:**
  - Electric patio awning and door awning w/ remote control and wind sensor
  - Full rear mudflap
  - Ladder
  - Dual directional bay storage trays
  - Shore cord reel
- **Individual Options:**
  - Cherry cabinetry
  - Maple cabinetry
  - Washer/dryer
  - Ultraleather sofa
  - Sleeper café dinette
  - Additional folding chairs (2)
  - 3-burner cooktop w/ 21" gas oven
  - OnStar RV navigation system
  - Factory delivery
  - Driver side manual sun shade
  - Computer desk
  - 3M nose coat

# FLOORPLANS

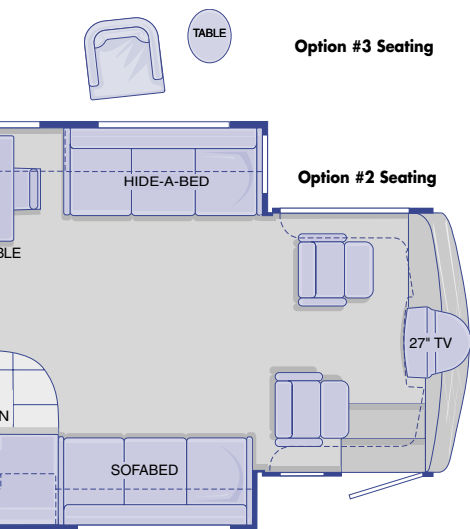
## 40' Genoa



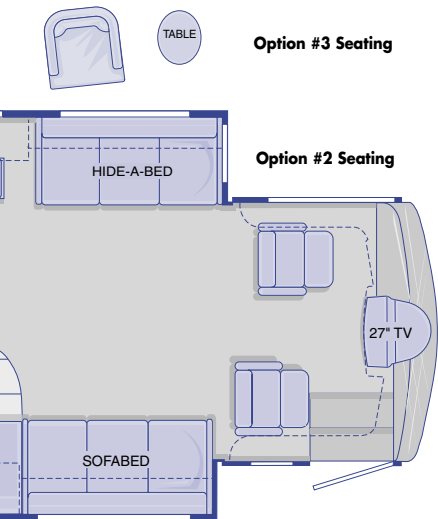
## 40' DaVinci







The Genoa, the first floorplan designed for the Inspire's unique features, is a triumph in the combination of livable space and luxurious amenities. Enjoy wide, tall slide rooms, ample storage and multi-function spaces for all lifestyle may require.

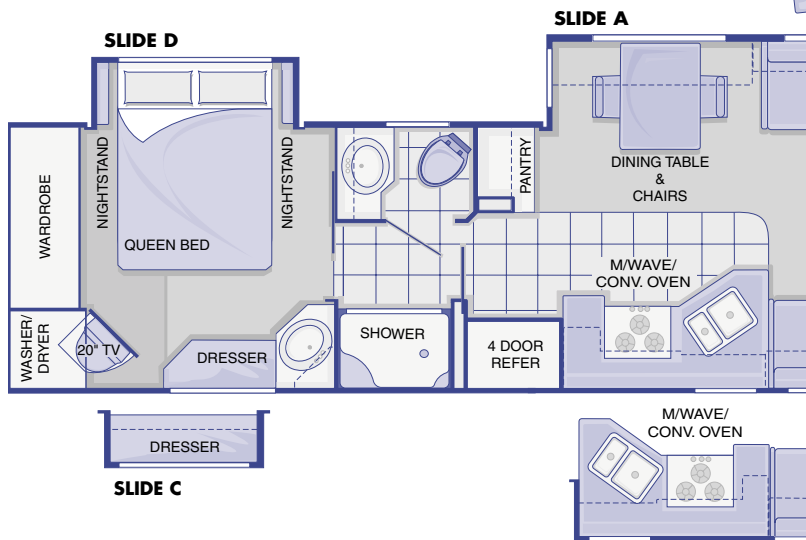


The DaVinci is designed to further explore the capabilities of the Inspire platform. Soon to be available as a quad slide as well, the DaVinci's modular floorplan offers new features like dual bathroom sinks.

**Inspire**  
COUNTRY COACH

# FLOORPLANS

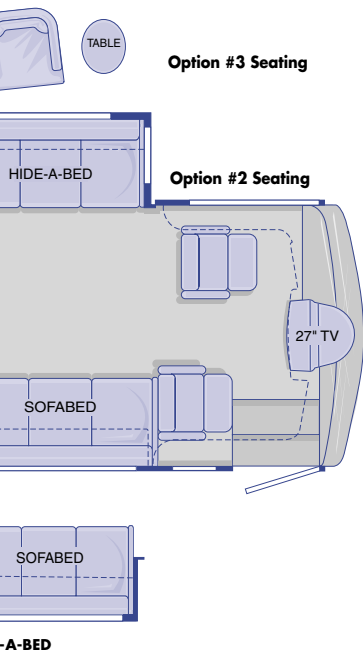
## 36' Siena



## SLIDE ROOM DIMENSIONS

**SLIDE B** W/OPOSITE HIDE

FLOORPLAN	SLIDE-OUT	HEIGHT	WIDTH	DEPTH
<b>40' Genoa</b>	Living room	6'-4"	12'-3"	2'-8"
	Galley	6'-3"	12'-8"	1'-8"
	Bedroom	5'-3"	7'	2'
<b>40' DaVinci</b>	Living room	TBD	TBD	TBD
	Galley	TBD	TBD	TBD
	Bedroom	TBD	TBD	TBD
<b>36' Siena</b>	Living room	TBD	TBD	TBD
	Galley	TBD	TBD	TBD
	Bedroom	TBD	TBD	TBD



The Siena is the first Inspire 36' floorplan. Designed to take advantage of the capabilities of the Inspire's modular platform, the Siena is also available as a quad slide. Discover the amazing way the Inspire brings livability into a more manageable space!

## Available Options

Double Slide: A, D

Triple Slide: A, B, (C or D)

Quad Slide: A, B, C, D

**Inspire**  
COUNTRY COACH



COUNTRY COACH, INC.

210 East Sixth Avenue • Junction City, OR 97448

800.654.0223 • [www.countrycoach.com](http://www.countrycoach.com)

### **Important Notices**

Due to constant product improvements, styling, design, equipment and construction are subject to change without notice or obligation. We reserve the right to make changes but are happy to verify any item on request. Some items featured may be optional.

Country Coach does not represent or warrant that its motorcoaches can lawfully be operated on all roads or in all states. Laws restricting the length, width, and/or weight of vehicles may vary from state to state. Depending on the model, some Country Coach motorcoaches (as well as motorcoaches produced by other manufacturers) may not legally be used on certain roads or in certain states, or may only be used on such roads or in such states with special permits or license endorsements. It is the responsibility of each prospective purchaser of a motorcoach to determine any limitations or restrictions on the use of the motorcoach in the states in which the purchaser intends to use it.

8K/0703