

2008 INSPIRE 360



COUNTRY COACH



36' Siena floorplan with Solstice interior and light cherry cabinetry

New for 2008

For 2008, the most popular Country Coach motorcoach reaches a new level of luxury refinement. Boasting new powertrain options and myriad internal improvements, the Inspire 360 represents the longstanding Country Coach ideal of form following

function. Step inside and relax in the beautiful, ergonomically-designed floorplans. Find your way with new Garmin navigation and side-view cameras. Most of all, find a smile in making the right decision and owning the motorcoach of your dreams.

New Standard Features

- Kenwood® AM/FM radio and CD player with two living room speakers
- Mini home theater system with DVD player, and 2.1 surround sound with two ceiling speakers and subwoofer in bedroom

New Options

- Powertrain: Caterpillar® C9 engine paired with Caterpillar CX28 transmission, producing 425 HP at 2300 RPM and 1350 ft-lbs torque at 1400 RPM. (Meets 2007 EPA emissions requirements)
- Choice of stationary or in-motion satellite systems

- Powertrain: Cummins® ISL engine paired with Allison 3000 MH transmission, producing 425 HP at 2200 RPM and 1200 ft-lbs torque at 1300 RPM (Meets 2007 EPA emissions requirements)
- Automatic low-voltage generator start
- 10-disc CD changer
- Garmin® GPS navigation system with XM Smart

Antenna (XM weather, XM traffic, and XM radio available with subscription)

- Side-view cameras on rear-view monitor display
- Max storage (floorplan dependent) in bedroom
- King bed 70" x 77" (floorplan dependent)



36' Siena floorplan with Solstice interior, light cherry cabinetry and optional Advantium® microwave/convection oven



36' Siena floorplan with Solstice interior and 26" LCD high definition TV

2008 INSPIRE 360 SPECIFICATIONS 2008 INSPIRE 360 2008 INSPIRE 360 SPECIFICATIONS 2008 INSPIRE 360

Chassis Specifications

- **DynoMax® chassis:** semi-monocoque construction with 10" x 3" x 1/4" (36') or 8" x 3" x 1/4" (34' and 40') steel-tube with welded components
 - 10,000 lb receiver hitch with electrical connector and chrome cover
 - 2-year/unlimited-mile chassis warranty
- **34', 36' and 40' chassis:** GVWR – 37,200 lbs, GCWR – 47,200 lbs
- **Wheelbase:** 34' Modena - 205", 36' Siena - 229", 40' DaVinci - 265", 40' Genoa - 277"
- **Engine:** Caterpillar® C9 400 HP with 1100 ft-lbs torque at 1400 RPM (Standard engine unavailable due to emissions regulations)

- **Powertrain:** Caterpillar® C9 engine paired with Caterpillar CX28 transmission, producing 425 HP at 2300 RPM and 1350 ft-lbs torque at 1400 RPM. (Meets 2007 EPA emissions requirements)
Engine features -
 - 9.3 liters (567 cubic inches)
 - Caterpillar multi-stage engine compression brake with brake light activation
 - Electronic Control Module (ECM)
 - Alternator: 160 amps
 - 120-volt, 1,000 watt engine block heater (when hydronic heat is not optioned)
 - Sight glass for coolant tank
 - 5-year/200,000-mile engine warranty*Transmission features -*
 - Caterpillar CX28 transmission with PTO
 - Six speed automatic
 - Keypad electronic shifter with digital display
 - 5-year/200,000-mile transmission warranty

- **Powertrain:** Cummins® ISL engine paired with Allison 3000 MH transmission, producing 425 HP at 2200 RPM and 1200 ft-lbs torque at 1300 RPM (Meets 2007 EPA emissions requirements)
Engine features -
 - 8.9 liters (543 cubic inches)
 - 2-stage engine brake with brake light activation
 - Electronic Control Module (ECM)
 - Alternator: 160 amps
 - 120-volt, 1,000 watt engine block heater (when hydronic heat is not optioned)
 - Sight glass for coolant tank
 - 5-year/100,000-mile engine warranty*Transmission features -*
 - Allison 3000 MH transmission with PTO
 - Six speed automatic with two overdrive gears
 - Keypad electronic shifter with digital display
 - 5-year/unlimited-mile transmission warranty (with TranSynd™ fluid)
- **Driveline:** Dana Spicer® 1710 Series
- **Drive axle:** ArvinMeritor® with 4.88 differential ratio

- **Suspension:**
 - *Front* - Holland/Neway® independent front suspension with double-wishbone construction and full air-suspension system, anti-sway bar, and Koni® shock absorbers
 - *Drive* - Holland/Neway drive axle-suspension system with two air springs and Koni shock absorbers
- **Service brakes:** Full air brakes with ABS, Automatic Traction Control (ATC), and automatic slack adjusters
 - 16.5" x 5" front axle
 - 16.5" x 7" drive axle
- **Steering:** Fully-integral, full-time hydraulic power-steering gear with tilt and telescoping steering column
- Electronic cruise control
- Williams Controls adjustable position throttle and brake pedals
- **Tires:** Steel-belted radials 295/80R x 22.5"
- **Wheels:**
 - *Front* - two 8.25" x 22.5" aluminum-alloy wheels
 - *Rear* - two 8.25" x 22.5" aluminum-alloy wheels and two 8.25" x 22.5" inner dual steel wheels

- **Battery:** Two group 31 engine cranking batteries with 12-volt disconnect
- **Fuel capacity:** 100 gallons (dual fuel fills, driver and passenger sides)
- **Service center:** diagnostic reader ports, circuit breakers, and chassis battery disconnect

Construction Highlights

- Exterior width: 102"
- Steel-tube cage structure
- Vacuum-bonded walls and floor with 1-1/2" expanded polystyrene insulation
- Fiberglass exterior with aluminum skirts and insulated compartment doors
- One-piece laminated fiberglass roof with steel-tube framing and dual-ducted roof air conditioners
- **Exterior riding height:** 12' 9" (including roof air; height varies with satellite option)
- **Finished interior height:** 85"
- Sound and vibration dampening material throughout

Driver Compartment Amenities

- 6-way power-adjustable driver and passenger seats with 3-point restraint and adjustable arms
- Driver sliding seat cushion and passenger seat power footrest
- Villa 2-way power-adjustable cab seats with 3-point restraint and adjustable arms, driver sliding seat cushion and passenger seat power footrest
- Passenger seat magazine rack
- Custom contoured dash and overhead
- Burlwood dash panel
- **Medallion gauges include:** Speedometer (with digital display for speedometer, odometer, trip odometer, and transmission temperature), tachometer, air pressure, oil pressure, volt meter, water temperature, and fuel level
- Garmin® GPS navigation system with XM Smart Antenna and color LCD touch-screen interface (XM weather, XM traffic, and XM radio available with subscription)
- Color rear-view monitor
- Side-view cameras on rear-view monitor display

- Side-view mirror power controls
- Cup holders
- Swing-out valet tray
- Single-piece wraparound windshield with shade band
- Heating/cooling/defrost unit in dash
- Two 12-volt dash overhead mounted 2-speed fans
- Electronic power sun visors
- Manual driver-side window sun shade
- Privacy drape
- Dual map lights
- Passenger-side control panels with step slide cover, porch light, ceiling lights, entry step, power visor control, and domestic battery disconnect switches with battery switch indicator lamp
- 18" SmartWheel® leather-wrapped steering wheel with controls for horn, head light flash, marker light flash, cruise functions, and wipers
- SmarTire® II tire monitoring system
- Bound floor carpets for entry steps
- Tile entry landing
- Tile flooring around driver's area
- Entry door interior assist grip

Front Entertainment

- 32" LCD high definition TV in overhead dash with five ceiling speakers and subwoofer
- 37" LCD high definition TV in overhead dash with five ceiling speakers and subwoofer
- 32" LCD high definition mid-coach TV (floorplan dependent)
- Home theater system with 5.1 surround sound and 5-disc DVD player
- Kenwood® AM/FM radio and CD player, with two living room speakers
- 10-disc CD changer
- Pre-wired for satellite dish
- Stationary satellite system
- In-motion satellite system
- In-motion satellite system and high definition receiver
- Boosted cable antenna switch box

General Conveniences

- Choice of four interior design themes: Coventry, Atlantic, Solstice, Morgan
- Custom crafted oak cabinetry and woodwork with raised panel doors
- Choice of cabinetry:
 - Light cherry
 - Medium cherry
 - Maple
- Decorative knobs and pulls
- Padded vinyl ceiling
- Custom interior décor kit (preset)
- Halogen lighting throughout
- Intellitec remote switching system
- Elliptical ceiling light fixtures with etching

- Decorative lighting in bedroom and living room
- Tension mount day/night window shades in living room, dining area and bedroom
- Mini-blinds in galley and bathroom
- Tile pattern upgrade
- Pre-plumbed for optional washer/dryer
- Washer/dryer combo
- Stacked washer and dryer
- Intellitec EMS system monitor panel
- Telephone jacks (two in living area, one in bedroom and one in storage bay)
- Stepwell light
- Power step slide cover
- Smoke detector
- Carbon monoxide detector
- Fire extinguisher
- LP gas detector
- Coach Information Kit: Owner's Guide, OEM manuals, chassis parts list
- Emergency Roadside Service (first year paid by Country Coach)
- Factory delivery

Living Room Amenities

- Choice(s) of the following:
 - Sofabed
 - Fold out sofabed
 - Hide-away sofabed
 - Euro recliner with ottoman and occasional table
- Choice(s) of the following:
 - J sofabed
 - Hide-away sofabed on passenger-side
- Computer table with charging center (replaces occasional table)
- Air spring mattress (only available with hide-away sofabed)
- Ultraleather® passenger-side sofabed
- Decorative window treatments in living room
- Carpet
- Sculpted carpet
- Full tile

Galley Amenities

- Polished solid-surface countertops with edge detail
 - Solid-surface splashguard located at forward end of countertop
 - Full tile backsplash
- Double-bowl stainless steel sink with solid-surface covers and single-lever faucet with pull-out sprayer
- Fan-Tastic® fan with rain sensor, automatic vent, remote switch and double dome
- Norcold® 12 cu ft 2-way refrigerator with ice maker and wood panel doors
- Norcold 12 cu ft 2-way refrigerator with ice maker and stainless steel doors
- Norcold 12 cu ft 2-way refrigerator with ice maker, water dispenser and stainless steel doors

- Microwave/convection oven with power hood
- Advantium® Speedcook stainless steel microwave/convection oven with power hood
- Recessed 3-burner electronic-ignition gas cooktop with solid-surface cover and sealed burners
- Storage for sink and stove covers
- Drop-in 3-burner LP gas cooktop with 21" LP gas oven
- Wood window box with mini blinds on galley window
- Dining area wall cabinet and wall-mounted dining table with fore and aft slide mechanism
 - Two chairs
- Sleeper café dinette with wood table
- Two additional folding chairs
- Tile flooring on main floor and carpet in slide-out rooms
- Accuride® self closing drawer guides
- Pantry

Bath Amenities

- Polished solid-surface countertop with edge detail
- Full tile backsplash
- Porcelain vanity sink with coordinating fixtures
- Decorative vanity light bar
- Vanity overhead with mirrored doors
- Towel ring, towel bar and toilet tissue holder
- Etched glass shower enclosure
- Insulated skylight above shower
- Light in shower
- Tub/shower combination (floorplan dependent)
- Aqua-Magic toilet
- Water pump switch
- Fan-Tastic® fan with rain sensor, automatic vent, remote switch and double dome
- Hand-held pressure-balanced shower unit
- Hardwood pocket doors
- Tile flooring
- Mini-blinds with fabric valance on bath window

Bedroom Amenities

- Queen bed 60"x77"
- King bed 70"x77" (floorplan dependent)
- Air chamber mattress queen bed
- Clothes dresser with drawers
- Upholstered headboard
- Bedspread with three décor pillows
- Sliding mirror wardrobe with lighting
- Decorative window treatments
- Tension-mount day/night shade window coverings
- Wall sconce lighting
- 26" LCD high definition TV

- Mini home theater system with DVD player, and 2.1 surround sound with two ceiling speakers and subwoofer
- Telephone jack
- Carpet
- Max storage (floorplan dependent)

Heating and Cooling Systems

- **Temperature control center controls the following:**
 - 35,000 BTU and 20,000 BTU LPG furnaces
 - Two 15,000 BTU low-profile roof air conditioners with heat pumps, remote condensation pump, and drain lines
- Aqua-Hot® 450 diesel-fired hydronic central heating system (50,000 BTU) with zone control and engine preheat
- Driver area over-the-road heating/cooling/defrost system with driver controls (45,000 BTU heating and 17,000 BTU cooling)

Power Sources

- 12-volt battery boost system
- Automatic low-voltage generator start
- Onan® 8.0 kW “quiet” liquid-cooled diesel generator with remote start/stop, on electric roll-out
- PTS 8.0 kW “quiet” generator with remote start/stop CAT® liquid-cooled engine, on electric roll-out
- 2000-watt solid-state inverter and 100-amp solid-state converter/charger with 15-amp chassis battery charge system
- Four 6-volt house batteries with disconnect switch
- 50-amp shore cord on manual reel with 30-amp adaptor
- 50-amp shore service surge protector

Plumbing Features

- **Exterior heated and insulated fiberglass plumbing bay includes:**
 - Hand-held spray fixture
 - Pressure regulated city-water to water-tank fill
 - Fresh-water low-point drain valve
 - Dump valves
 - Hot and cold faucet
 - Sewer hose storage
 - Telephone and cable TV hook-ups
- 10 gallon LP/electric water heater
- Aqua-Hot® 450 hydronic water heating system with electric back-up
- 12-volt on-demand water pump
- Water pump switch in bath area
- Black-water tank flush system
- Total house water filtration system
- Electronic tank monitoring system
- Pre-plumbed and pre-wired for washer/dryer

Tank Capacities

- 88 gallon fresh-water
- 69 gallon gray-water
- 53 gallon black-water
- 32 gallon LP
- 100 gallon fuel

Exterior Conveniences

- Powder-coated steel frame structure entry door with auto-hold, deadbolt, key fob keyless entry, and screen door
- Lighted entry door assist grip
- Patio light
- Electric entry doorstep with automatic override at ignition
- Retractable non-skid entry steps
- **Standard awning package:**
 - Carefree® window awnings for bedroom window and all slide-out rooms
 - Summit slide-out covers for all DS slide-out rooms
 - Kover II slide-out cover for PS living room/galley slide-out
 - Eclipse power patio awning with wind sensor and remote
 - Freedom III electric awning over entry door
 - Pull rod
- Girard® electric patio box awning and door awning with wind sensor (floorplan dependent)
- Power adjustable TV antenna with coaxial cable and 12-volt signal boost
- 120-volt receptacle, coaxial cable, and telephone jack (storage bay)
- Chrome dual air horns
- Thermostatically-controlled/heated, remote control chrome side-view mirrors with turn signals and adjustable arms
- HWH® 4-point Computer Area Network (CAN) automatic air-leveling system
- Daytime running lights
- Fog lights
- Four curb lights
- Large halogen headlights
- Marker lights
- Lighted, pass-through exterior storage bays with carpet lining and insulated doors
- Single-directional, half-bay roll-out storage tray
- Dual-directional, full-bay roll-out storage tray
- Full rear mud flap with stainless steel trim
- Mud flaps behind dual tires
- Polished stainless steel exhaust pipe tips for generator, Aqua-Hot® 450, and engine
- 3M® nose protectant and entry door area protectant
- Clear-coat exterior
- Exterior paint scheme (choice of four color themes)

- Dual-pane insulated windows
- Ladder with universal assist extension
- Retractable engine light with remote reel
- Two fuel cap holders
- Sunscreen windshield cover

Slide-Out Room Special Features

- Centrally located switches for slide-out room controls
- Flat floor living room
- Power Gear® room-extension mechanisms for all slide-out rooms
- Awnings extend and retract with slide-out rooms

Slide-Out Room Dimensions

34' Modena	SLIDE-OUT	WIDTH	DEPTH	HEIGHT
A. Living room		9'3"	2'8"	6'4"
B. Galley		9'1"	1'8"	6'3"
C. PS Bedroom		4'7"	1'6"	5'8"
D. DS Bedroom		6'1"	2'0"	5'3"

36' Siena	SLIDE-OUT	WIDTH	DEPTH	HEIGHT
A. Living room		12'3"	2'8"	6'4"
B. Galley		11'1"	1'8"	6'3"
C. PS Bedroom		4'7"	1'6"	5'8"
D. DS Bedroom		6'1"	2'0"	5'3"

40' Da Vinci	SLIDE-OUT	WIDTH	DEPTH	HEIGHT
A. Living room		12'3"	2'8"	6'4"
B. Galley		12'8"	1'8"	6'3"
C. PS Bedroom		5'3"	1'6"	5'8"
D. DS Bedroom		6'1"	2'0"	5'3"

40' Genoa	SLIDE-OUT	WIDTH	DEPTH	HEIGHT
A. Living room		12'3"	2'8"	6'4"
B. Galley		12'8"	1'8"	6'3"
D. DS Bedroom		7'0"	2'0"	5'3"

Options Summary

- Powertrain:** Caterpillar® C9 engine paired with Caterpillar CX28 transmission, producing 425 HP with 1350 ft-lbs torque at 1400 RPM. (Meets 2007 EPA emissions requirements)
Engine features -
 - 9.3 liters (567 cubic inches)
 - Caterpillar multi-stage engine compression brake with brake light activation
 - Electronic Control Module (ECM)
 - Alternator: 160 amps
 - 120-volt, 1,000 watt engine block heater (when hydronic heat is not optional)
 - Sight glass for coolant tank
 - 5-year/200,000-mile engine warranty*Transmission features -*
 - Caterpillar CX28 transmission with PTO
 - Six speed automatic
 - Keypad electronic shifter with digital display
 - 5-year/200,000-mile transmission warranty
- Powertrain:** Cummins® ISL engine paired with Allison 3000 MH transmission, producing 425 HP at 2200 RPM and 1200 ft-lbs torque at 1300 RPM (Meets 2007 EPA emissions requirements)
Engine features -
 - 8.9 liters (543 cubic inches)
 - 2-stage engine brake with brake light activation
 - Electronic Control Module (ECM)
 - Alternator: 160 amps
 - 120-volt, 1,000 watt engine block heater (when hydronic heat is not optional)
 - Sight glass for coolant tank
 - 5-year/100,000-mile engine warranty*Transmission features -*
 - Allison 3000 MH transmission with PTO
 - Six speed automatic with two overdrive gears
 - Keypad electronic shifter with digital display
 - 5-year/unlimited-mile transmission warranty (with TranSynd™ fluid)
- Villa 2-way power-adjustable cab seats with 3-point restraint and adjustable arms, driver sliding seat cushion and passenger seat power footrest
- Driver sliding seat cushion and passenger seat power footrest
- SmarTire® II tire monitoring system
- Garmin® GPS navigation system with XM Smart Antenna and color LCD touch-screen interface with dash stereo (XM weather, XM traffic, and XM radio available with subscription)
- Stationary satellite system
- In-motion satellite system

- In-motion satellite system and high definition receiver
- 37" LCD high definition TV in overhead dash with five ceiling speakers and subwoofer
- 32" LCD high definition mid-coach TV
- 10-disc CD changer
- Elliptical ceiling light fixtures with etching
- Maple cabinetry
- Light cherry cabinetry
- Medium cherry cabinetry
- Sculpted carpet in living room
- Custom interior décor kit (preset)
- Full tile living room floor
- Tile pattern upgrade
- Washer/dryer combo
- Stacked washer and dryer
- J sofabed
- Hide-away sofabed on passenger-side
- Air spring mattress (available only with hide-away sofabed)
- Ultraleather® passenger-side sofabed
- Computer table with charging center (replaces occasional table)
- Sleeper café dinette with wood table
- Two additional folding chairs
- Norcold 12 cu ft 2-way refrigerator with ice maker and stainless steel doors
- Norcold 12 cu ft 2-way refrigerator with ice maker, water dispenser and stainless steel doors
- Advantium® Speedcook stainless steel microwave/convection oven with power hood
- Drop-in 3-burner LP gas cooktop with 21" LP gas oven
- Air chamber mattress queen bed
- King bed 70"x77" (floorplan dependent)
- Max storage (floorplan dependent)
- Tub/shower combination (floorplan dependent)
- PTS 8.0 kW "quiet" generator with remote start/stop CAT® liquid-cooled engine, on electric roll-out
- Automatic low-voltage generator start
- Aqua-Hot® 450 hydronic water heating system with electric back-up
- Aqua-Hot® 450 diesel-fired hydronic central heating system (50,000 BTU) with zone control and engine preheat
- Girard® electric patio box awning and door awning with wind sensor (floorplan dependent)
- Single-directional, half-bay roll-out storage tray
- Dual-directional, full-bay roll-out storage tray
- Side-view cameras on rear-view monitor display
- Sunscreen windshield cover
- Ladder with universal assist extension

- 3M® nose protectant and entry door area protectant
- Factory delivery

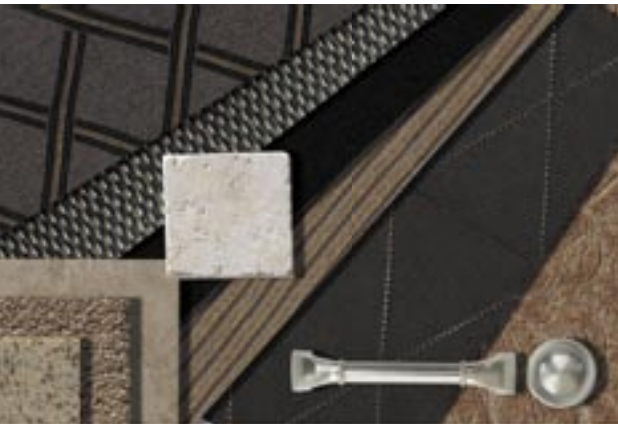
IMPORTANT NOTICE: Country Coach does not represent or warrant that its motorcoaches can lawfully be operated on all roads or in all states. Laws restricting the length, width, and/or weight of vehicles vary from state to state. Depending on the model, some Country Coach motorcoaches (as well as similar sized motorcoaches produced by other manufacturers) may not legally be used on certain roads or in certain states, or may only be used on such roads or in such states with special permits or license endorsements. It is the responsibility of each prospective purchaser of a motorcoach to determine any limitations or restrictions on the use of the motorcoach in the states in which the purchaser intends to use it.

Due to constant product improvements, styling, design, equipment and construction are subject to change without notice or obligation. We reserve the right to make changes, but are happy to verify any item on request. **Some items featured may be optional.**

Atlantic



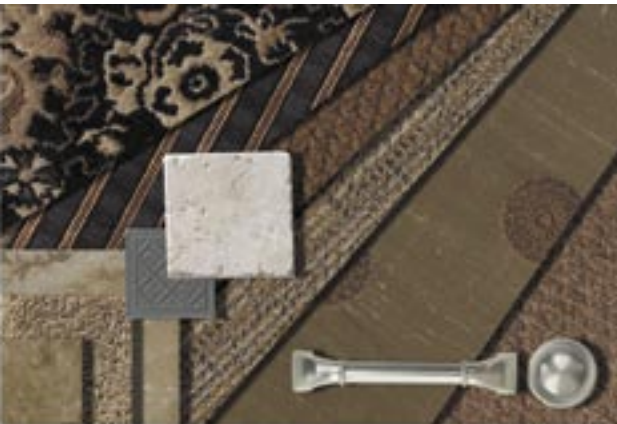
Solstice



Morgan



Coventry



WOOD CHOICES

Oak (standard)



Light Cherry (optional)



Medium Cherry (optional)



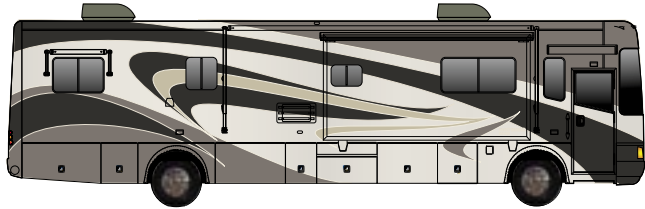
Maple (optional)



While we try to represent the textiles accurately, color and hue shown here may vary from the original samples. Please see your dealer representative to view actual fabric samples.

EXTERIOR PAINT CHOICES

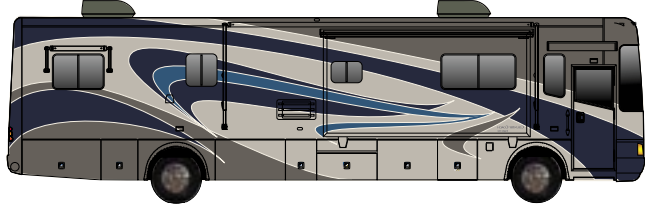
Atlantic



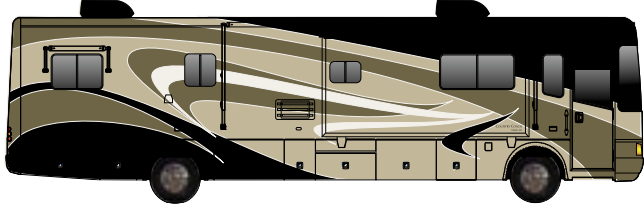
Morgan



Coventry

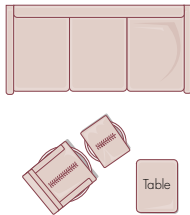


Solstice



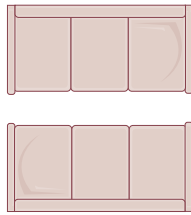
2008 INSPIRE 360 SEATING ARRANGEMENTS 2008 INSPIRE 360

SEATING 1



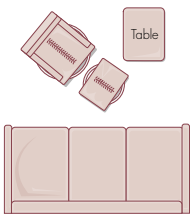
(DS) Sofabed
(PS) Euro recliner
with ottoman and
occasional table
*Cannot choose two
hide-away sofas*

SEATING 2



(DS) Sofabed
(PS) Sofabed

SEATING 3

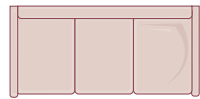


(DS) Euro recliner
with ottoman and
occasional table
(PS) Sofabed

DS = Driver-Side, PS = Passenger-Side

SELECT YOUR FAVORITE SLEEPER SOFABED

Sofabed



For the Inspire 360,
Sofabeds are
available in standard
configurations. In each
configuration, two
styles of sofabed may
be available.

STYLES

Fold-out Sofabed

Style features a
residential sofabed
design. For conversion
to bed, lift the sofabed
seat up and out to a
horizontal position.
Provides a sleeping
surface faced with
sofa fabric.

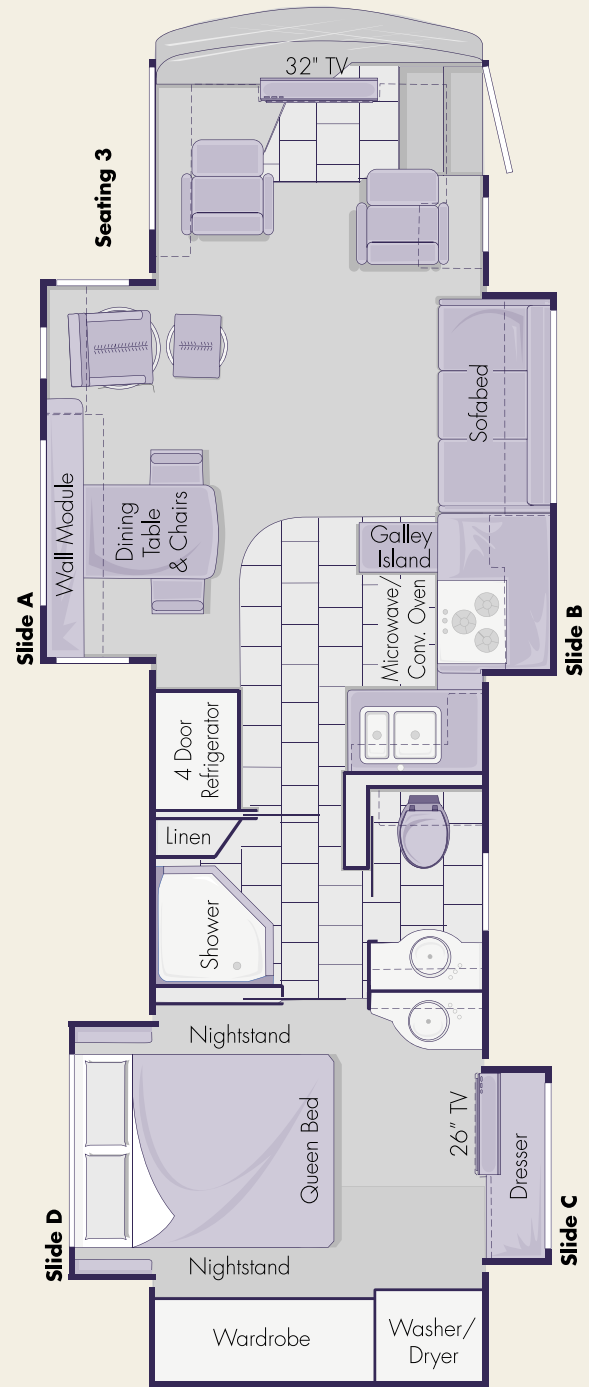
Hide-away Sofabed

Style features a
residential sofabed
design. For conversion
to bed, remove the
seat cushions and pull
out the hide-away bed
frame to unfold and
extend the mattress.
Provides a
conventional or
air mattress
sleeping surface.

34' Modena

Available
Slideout Room
Configurations:

Quad Slide: A, B, C, D



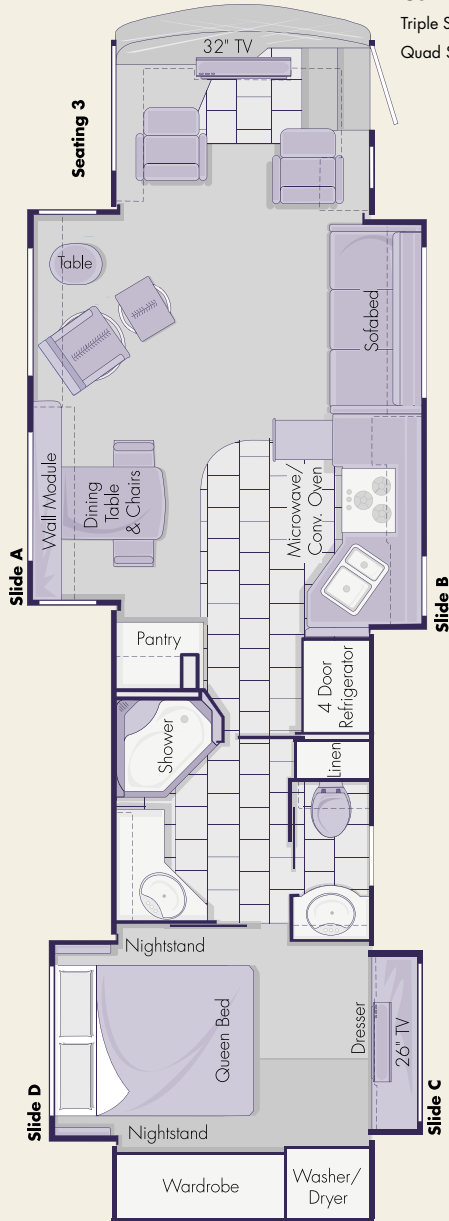
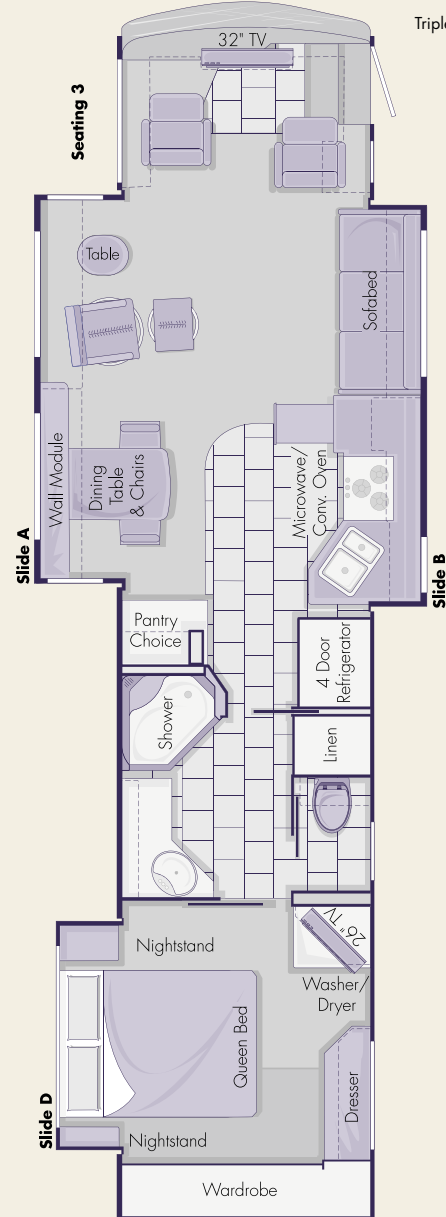
36' Siena

Available
Slideout Room
Configurations:

Triple Slide: A, B, D

Quad Slide: A, B, C, D



40' DaVinci**Available
Slideout Room
Configurations:**Triple Slide: **A, B, D**Quad Slide: **A, B, C, D****40' Genoa****Available
Slideout Room
Configurations:**Triple Slide: **A, B, D**

COUNTRY COACH
THE WORLD'S FINEST MOTORCOACHES

www.countrycoach.com

Customer Care Center 210 East Sixth Avenue, Junction City, Oregon 97448

800-654-0223, 541-998-3001

Corporate Office 135 East First Avenue, Junction City, Oregon 97448

800-547-8015, 541-998-3720