

MORE >>> Go see more details on construction, features & benefits at: crossroadsrv.com/rushmore



305 HAWPATCH DRIVE ☘ TOPEKA, IN 46571 ☘ PH 260 593-3850 ☘ FX 260 593-2088



DISCLAIMER: Product information is as accurate as possible at the date of publication of this brochure. All features, floorplans, and specifications in this brochure are subject to change without notice. Please also consult CrossRoads RV's website at www.crossroadsrv.com for more current product information and specifications. Tow Vehicle Disclaimer. CAUTION: Owners of CrossRoads recreational vehicles are solely responsible for the selection and proper use of tow vehicles. All customers should consult with a motor vehicle manufacturer or their dealer concerning the purchase and use of suitable tow vehicles for CrossRoads RV products. CrossRoads RV disclaims any liability or damages suffered as a result of the selection, operation, use or misuse of tow vehicle. CROSSROADS RV'S LIMITED WARRANTY DOES NOT COVER DAMAGE TO THE RECREATIONAL VEHICLE OR TOW VEHICLE AS A RESULT OF THE SELECTION, OPERATION, USE OR MISUSE OF THE TOW VEHICLE.

ADVENTURE NEVER FELT BETTER!



RUSHMORE

LUXURY FIFTH WHEELS

Why Choose RUSHMORE?

Rushmore is as elegant and prestigious inside as it is out. This modern fifth wheel was developed with you in mind. Equipped with all the features, options and amenities you could wish for in any RV, the Rushmore lets you choose the exact interior to fit your lifestyle,

with rich dark maple cabinets and two designer inspired interior decor choices. For maximum entertainment, the large 40" LCD TV (Standard in all floor plans) is wired to a home theater system. This level of luxury and comfort is sure to inspire you.



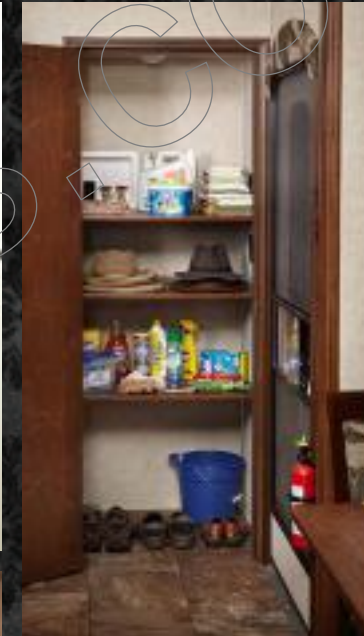
The plush sofa converts to a King Bed.

SEE MUCH MORE AT: CROSSROADSRV.COM/RUSHMORE *Get Started*

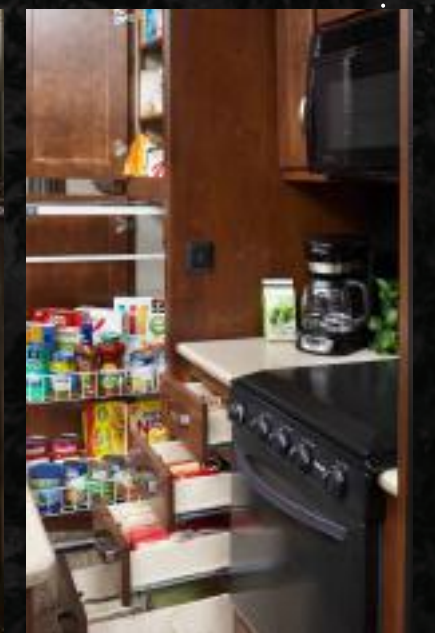
Living INNOVATION



The Rushmore Master Suite.



Standard Dual 8 cu. ft. Refrigerators.



SEE MUCH MORE AT: CROSSROADSRV.COM/RUSHMORE *Get Started*

Rushmore

STANDARDS & OPTIONS

STANDARDS

CONSTRUCTION

CrossRoads' Exclusive DuraTherm Residential Construction

- StructureSeal Low Pressure Sidewall Lamination
- Champagne Gel Coated Fiberglass Sidewalls
- Double Layered Luan Backing with Staggered Seams
- 2" Welded Aluminum Sidewall Studs that are 16" On Center
- Custom Cut-and-Fit Fiberglass Batt Insulation in the Front, Rear, and Sidewalls
- Flex Foil Insulation in the Sidewalls, Floor, Ceiling, Front Cap and Rear Cap
- Radiant Technology Reflective Thermo-Foil Insulation in the Front and Rear Caps
- 3" X 2" Aluminum Floor Joists that are 16" On Center
- 2 Layers of Fiberglass Batt Insulation in the Floor and Ceiling
- Flex Foil Insulation in Underbelly
- Heated & Enclosed Seamless Underbelly
- 5/8" Glued & Screwed Tongue & Groove Plywood Floor Decking
- Bowed Aluminum Roof Trusses that are 16" On Center
- 3/8" Plywood Roof Decking
- Champagne Colored Alpha Super Flex II Roofing Material

EXTERIOR

- Beautiful 2-Tone Partial Paint w/ Protective Clearcoat
- Molded Aerodynamic Front & Rear Fiberglass Caps
- IntelliJacks™ Front Landing Gear w/ Auto Re-Hitch Memory
- Heavy Duty Electric Rear Stabilizing Jacks
- Electric Powered Deep/ Main and Schwintek Sliderooms. No More Hydraulic Pump, Lines, Fluid, or Leaks in Your Compartments!
- 50 Amp Service w/ 50 Amp Detachable Power Cord
- Battery Disconnect
- Trail Air® Equa-Flex Suspension
- Universal Docking Station
- Black Tank Flush
- Outside Shower with Hot & Cold Water
- Tank Pull Handles
- 12 Volt Light
- Winterization Valves
- City Water Hook Up w/ High Pressure Fresh Tank Fill
- Water Heater Bypass
- Outside E-Center with TV, Stereo, DVD Player & Mini-Fridge (floorplan specific)
- 2 Marine Quality Outside Speakers
- Rear Ladder
- 16" Radial Tires w/ Aluminum Rims
- Spare Tire & Under Mount Carrier
- 4" Rain Gutter Spouts
- 30" x 76" Main Entry Door w/ Screen Door
- Satellite Prep
- Exterior Cable/Satellite Hook-up
- TV Antenna w/ Cable Input
- TV Hook-up in Trunk Area w/ 110V Outlet
- Large Entry Assist Handle
- LED Hitch Lights w/ Interior and Exterior Switch
- Outside Scare Light (door side)
- GFI Protected Outside 110V Electrical Outlet
- EZ Entry Quad-Step at Main Entry Door
- Cargo Maxx Pass-Thru Storage w/ Auxiliary Power Awning Switch(s)
- Tuff-Ply Non-Slip TPO Flooring in the Pass-Thru Compartment
- Total Exterior Storage Capacity of Over 100 cu. ft.
- Insulated Slam-Latch Pass-Thru Baggage Doors w/ High Pressure Gas Struts
- Triple Exchangeable 20 lb. LP Tanks w/ Auto Changeover
- Toolbox Storage in Roadside & Curbside LP Compartments
- EZ Lube Hubs & 7,000 lb. Axles

- Automotive Frameless Windows w/ Safety Glass and Dark Tint
- Carefree Traveler Series Power Awning with LED Light Strip

UTILITIES & ELECTRONICS

- 40,000 BTU Furnace
- 10 Gallon Gas/Electric DSI Hot Water Heater
- 15,000 BTU Whisper Air A/C System by Dometic
- Prep For Second A/C
- 75 Amp Power Converter
- Washer/Dryer Prep
- 40" HD LCD TV in Main Living Area
- 32" HD LCD TV in Master Suite
- Premium Dolby Home Theater System w/ 5.1 Surround Sound and Sub-Woofer
- Residential 30" OTR Microwave Oven w/ Light & Exhaust Fan
- High-Output Range w/ 22" Oven, Automatic Igniter & Range Cover
- Dual 8 cu. Ft. Double-Door Refrigerators w/ Radius Hi-Gloss Black Panels

LIVING ROOM

- Vaulted Ceilings in the Main Living Area
- 6' 7" Ceiling Height in the Main Level Slideroom
- Brushed Nickel Ceiling Fan
- Night Shades Throughout
- Premium Wrought Iron Rod & Curtain Window Treatments
- Residential Wainscoted Interior Wall Treatment w/ Chair Rail
- Flush Mount Halogen Lighting Throughout
- Striking Oversized, Radius Overhead Cabinetry w/ Top & Bottom Soffits and Inset Halogen Lighting
- Solid Mitered Maple Cabinet Doors w/ Hidden Hinges
- Elegant V-Groove Glass Overhead Cabinet Doors w/ Hidden Hinges
- Brushed Nickel Hardware & Fixtures Throughout
- Solid Hardwood Slide-Out Fascia

- 84" Residential Sleeper-Sofa that Converts into a King Bed (floorplan specific)
- Convertible J-Lounge Sleeper-Sofa w/ Storage Drawer (floorplan specific)
- Dual Swivel Rocker/Glider Recliners (floorplan specific)
- Theater Seating w/ Individual Recliners, Center Console, and 2 Drink Holders (floorplan specific)
- Transitional Design Great-Room Sectional w/ Extendable Foot Rests (floorplan specific)
- Hallway Step Light
- Estate Grade Sculptured (directional) Carpeting w/ 1/2" Rebond Carpet Padding

KITCHEN

- Walk-In Utility Closet/Pantry w/ Removable Shelving
- Waste Basket Cabinet (waste basket included!)
- Solid Mitered Maple Cabinet Doors w/ Hidden Hinges
- Solid Maple Drawer Fronts
- Brushed Nickel Hardware & Fixtures Throughout
- Full Extension Ball Bearing Drawer Guides
- Armstrong Designer Carefree Linoleum in Kitchen & Entry Area
- Undermount 50/50 Stainless Steel Kitchen Sink
- 100% Acrylic 2-Tone Solid Surface Countertop & Sink Covers by LG
- Hi-Rise Faucet w/ Pull Down Sprayer
- Designer Pendant Overhead Lighting
- Double Pantry: Upper w/ Adjustable Shelving; Lower w/ Pull-Out Storage Baskets
- 2 Oversized Pot & Pan Storage Drawers Below Dual Refrigerators
- Fire Extinguisher / LP Detector / Smoke Detector
- Free Standing Dinette Table & 4 Chairs w/ Flip-Up Seat Storage
- Water Purifier
- Recessed Central Control Cabinet that Includes a Full Systems Monitor Panel

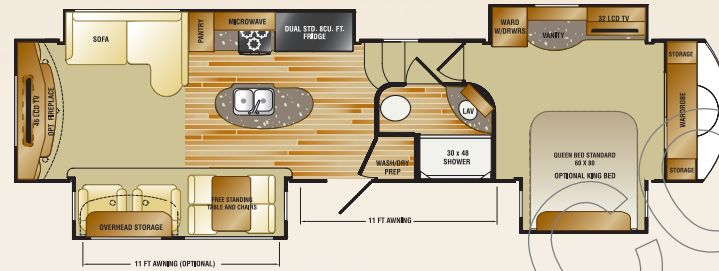
BEDROOM (MASTER SUITE)

- Exclusive Dual Opposing Bedroom Slides Create "Industry Best" Master Suite
- 60" x 80" Queen Bed w/ Giant Under Bed Storage w/ Gas Struts
- Queen Pillow-Top Innerspring Mattress
- 2 Night Stands, Each with a 110V Electrical Outlet
- Bedspread & Luxurious Pillow Package
- Matching Padded & Stitched Window Valances and Wardrobe Header
- Residential Wainscoted Bedroom Wall Treatment w/ Chair Rail
- Striking Radius Cabinet Over the Bed w/ Top & Bottom Soffits and Inset Halogen Lighting
- Large Hidden Storage Area Behind the TV w/ 2 Drawers Below
- Mirrored Vanity w/ Bank of Cabinets Below
- Dual Bed-Slide Windows to Provide Cross Ventilation
- Night Shades Throughout
- Spacious Walk-In Wardrobe w/ Built In Shelving and Recessed Shoe Storage
- Jacket/Shirt Wardrobe w/ Drawers Below

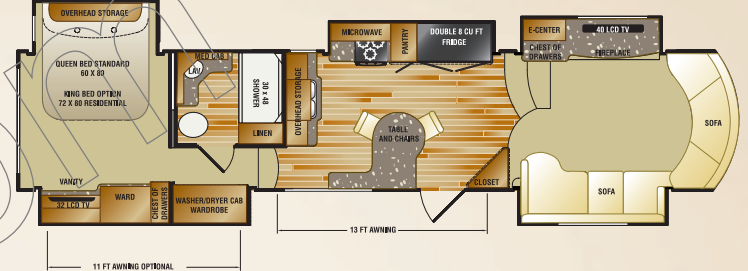
BATHROOM

- Heat and A/C Ducts
- Large Molded Undermount Lav Bowl
- 100% Acrylic 2-Tone Solid Surface Countertop & Sink Cover by LG
- Armstrong Designer Carefree Linoleum in Bathroom
- Deep Base Cabinet Storage
- Brushed Nickel Shower Head
- Oversized Medicine Cabinet w/ Mirror
- Extra Large Linen Closet
- Porcelain Foot Flush Toilet
- Power Ventilation Fan
- 1-Piece 48" x 30" Molded Fiberglass Shower w/ Seat
- 24" x 36" Domed Skylight Over the Shower
- Tri-Fold Glass Sower Door

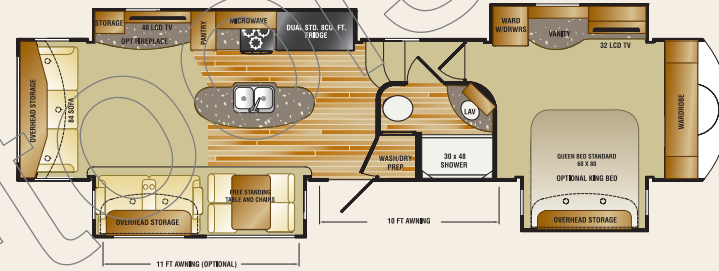
JEFFERSON - RF39JE



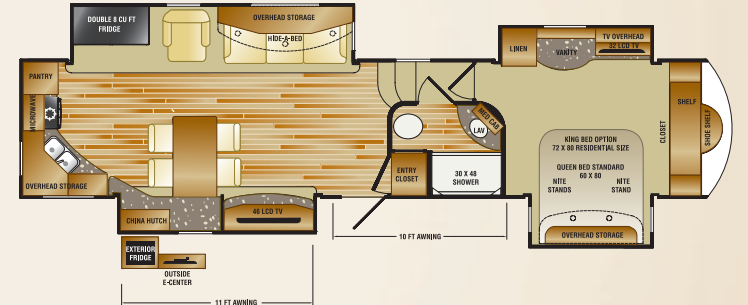
LINCOLN - RF39LN



WASHINGTON - RF39WA



ROOSEVELT - RF39RS



RUSHMORE

Dry Weight

GVWR

Carrying Capacity

Hitch Weight

Axle Weight

Exterior Length

Exterior Height (with A/C)

Tire Size

JEFFERSON

LINCOLN

WASHINGTON

ROOSEVELT

N/A

N/A

N/A

N/A

N/A

N/A

39' 11"

40' 11"

12' 9"

12' 9"

ST235/80R16E

ST235/80R16E

ST235/80R16E

ST235/80R16E

Fresh Water: 92 gal. / Black Water: 40 gal. / Gray/Galley Water: 80 gal.

ADDITIONAL SPECS AVAILABLE ON OUR WEBSITE

CONVENIENCE FEATURES



LED lighted awning.



Line-of-Sight IntelliJack control panel.



Automotive frameless windows.



Outside awning switches, plus hitch light switch.