



DISCOVER MORE BY VISITING CROSSROADS RV'S WEBSITE

IF YOU'RE SHOPPING FOR THE BEST VALUE IN TRAVEL TRAILER AND FIFTH WHEEL PRODUCTS, CROSSROADS HAS SOMETHING FOR YOU! VISIT OUR INFORMATIVE, EASY-TO-USE WEBSITE AND SEE AND COMPARE ALL MODELS. THERE ARE VIRTUAL TOURS OF POPULAR FLOOR PLANS, MORE PHOTOS, FEATURES AND INFORMATION TO FIND YOUR CLOSEST DEALER. THANKS FOR CONSIDERING CROSSROADS RV!

OUR FAMILY >>>



LUXURY FIFTH WHEELS

ELEVATION

LUXURY LIGHT WEIGHT TOY HAULER

CRUISER

OUR STANDARD IS LOADED

CRUISER AIRE

OUR STANDARD IS LOADED

SUNSET TRAIL

LIGHT WEIGHT RESERVE & SUPER LITE

ZINGER

TRAVELTRAILERS WITH USER FRIENDLY FEATURES

RESERVE

FAMILY FUN LOADED WITH VALUE

Z-1

AMAZING FEATURES IN A LIGHT WEIGHT PACKAGE



MADE IN THE USA

PROUD TO BE MADE IN THE UNITED STATES OF AMERICA! ALL CROSSROADS PRODUCTS, INCLUDING ZINGER MODELS, ARE HAND-CRAFTED BY A SEASONED MIDWEST WORKFORCE DEDICATED TO QUALITY AND INTEGRITY. THE BEST ONLY GETS BETTER WHEN YOU CONSIDER THE METICULOUS ATTENTION TO DETAIL, QUALITY OF COMPONENTS AND VALUE AN AMERICAN MADE PRODUCT BRINGS. YOU CAN CHECK OUT OUR FULL LINE OF PRODUCTS BY VISITING CROSSROADSRV.COM TODAY.

MORE >>>

Go see more details on construction, features & benefits at: crossroadsrv.com

CrossRoads®
RECREATIONAL VEHICLES

YOUR LOCAL CROSSROADS DEALER:

1140 W. LAKE STREET 🍷 TOPEKA, IN 46571 🍷 PH 260 593-3850 🍷 FX 260 593-2088

CRUISER

FIFTH WHEEL TRAILERS



CROSSROADS®
RECREATIONAL VEHICLES

CRUISER

Cruiser fifth wheels are engineered with top of the line building materials. Over the years, the Cruiser has evolved to continually meet and exceed our customers' expectations. It's all about livability and high end features never seen before at this price point. Let the Cruiser redefine your home away from home.



305RS in Ocean decor.



315RL in Redstone decor.



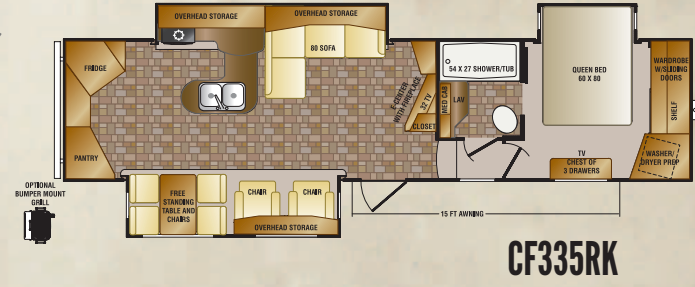
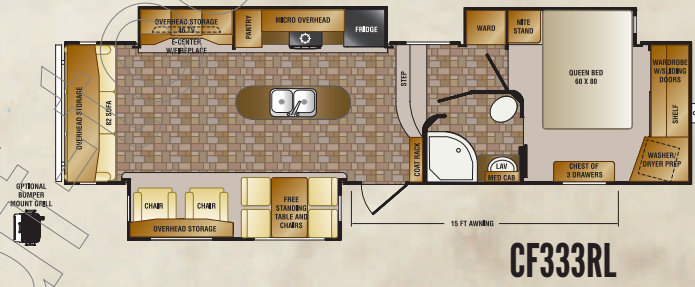
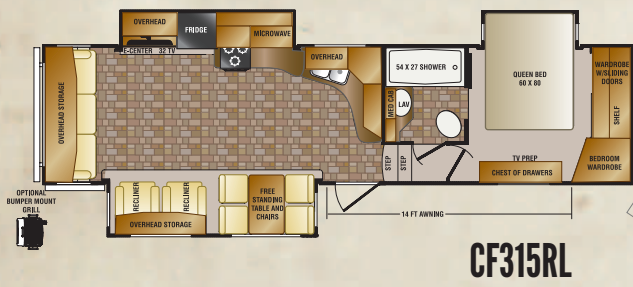
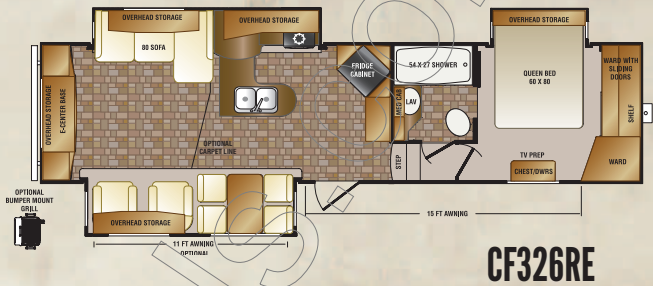
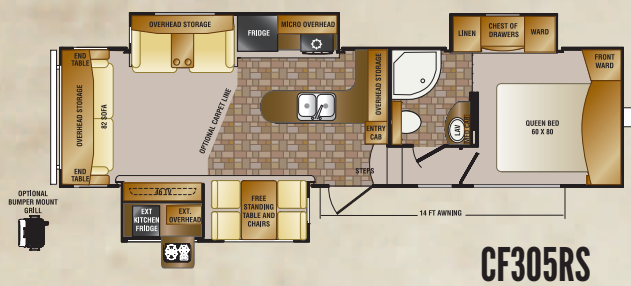
CRUISE ON OVER!

Some of Cruiser's standout features include hardwood slide fascias, raised panel cabinetry, 8 cu. ft refrigerator, solid surface kitchen countertops, 32-46" LED TV, fireplace with remote, Bluetooth multi-media sound system, LED ceiling lights, a true 80" queen mattress, oversized tubs/showers and washer/dryer prep just to name a few



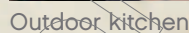
CRUISER MODELS

Select any floor plan and see specifications for details. Consult your local dealer for a tour of your favorite model or visit crossroadsrv.com and take a virtual tour of select models. All Cruiser fifth wheels are designed for lightweight towing, yet come standard with all the luxuries of home. Compare today and you'll see the difference!



CRUISER	CF305RS	CF315RL	CF322RL	CFR326RE	CF333RL	CF335RK
SHIPPING WEIGHT	9278	9090	TBD	10396	10234	TBD
GVWR	12180	12305	TBD	12194	12128	TBD
CARRYING CAP	2902	3215	TBD	1798	1894	TBD
HITCH WEIGHT	1780	1905	TBD	1794	1728	TBD
AXLE WEIGHT	7498	7185	TBD	8602	8506	TBD
EXTERIOR LENGTH	32' 11"	34' 5"	TBD	34' 11"	35' 11"	TBD
EXT. HEIGHT W/AC	12' 8"	12' 8"	TBD	12' 8"	12' 8"	TBD
FRESH WATER	58	58	TBD	58	58	TBD
BLACK WATER	40	40	TBD	40	40	TBD
GRAY	80	80	TBD	80	80	TBD
TIRE SIZE	235/80R16E	235/80R16E	TBD	235/80R16E	235/80R16E	TBD

The image displays three detailed floor plans for different motorhome models, arranged vertically. Each plan includes room labels, dimensions, and a 10-foot awning area. The top plan is for model CF345BH, the middle for CF354BH, and the bottom for CF368BH. To the right of the plans is a photograph of an outdoor kitchen area, featuring a sink, stove, and storage cabinets. Below the photograph is a section titled 'NOTES:' followed by several horizontal lines for writing.



NOTES:

This image shows a single sheet of white paper with horizontal blue or grey ruling lines. The lines are evenly spaced and run across the width of the page. There is no handwriting or other markings on the paper.

10834
16002
5168
2002
8832
36' 11"
12' 8"
58

STANDARDS &

STANDARDS

EXTERIOR

- Hard-Shell laminated sidewalls
- 5-Sided Alumina frame construction
- Aerodynamic front cap (Caramel color) with LED accent lights
- Partially painted front cap
- One-piece seamless rubber roof covering
- Radius roof line
- Total Truss room system
- 30"x72" main entry door
- Lighted triple entry step
- Extendable grab handle at main entry
- EZ lube axles
- Trail air equa-flex suspension enhancement with adjustability
- 16" nitrogen filled radial tires
- Galvanized wheel well
- Outside kitchen (VBM)
- Super-Stor pass through basement storage
- Slam latch pass through baggage doors
- Cable TV and outlet in basement
- Manual slide override extends through frame for easy access
- Dura-Cam I beam frame
- Scare light
- Convenience outlet at front awning arm

- Exterior marine grade speakers (2)
- Dual battery capacity
- Battery disconnect
- Heated and enclosed gate valves
- ABS Enclosed underbelly
- Forced heat to underbelly
- Black tank flush
- Quick recovery 10gal G/E DSI water heater (19.7 gal/hr)
- Outside shower
- Exterior utility center
- 50amp detachable power service
- 2nd AC prep
- Cable/SAT prep
- Digital TV antenna
- Electric rear jacks
- Outside grill prep
- Roof ladder

POLARTEC COMPONENTS

- Sidewall - Block foam insulation + double layer lauan
- Roof - Wood rafters + R-14 spun insulation + R-15 Astrofoil
- Floor system - R-14 spun insulation + R-15 astrofoil + ABS enclosure
- Front wall - R-7 spun insulation + R-15 astrofoil
- Rear wall - R-7 spun insulation + R-15 astrofoil

- Slide floor - R-15 astrofoil insulation
- Slide end walls - R-7 spun insulation + R-15 astrofoil
- Bedroom deck - R-7 spun insulation + R-15 astrofoil
- Above open pin box - R-15 astrofoil
- Gate valves - Enclosed and heated
- Underbelly - Forced heat to tanks
- 35,000 BTU Furnace - Largest in its class

INTERIOR

- Screwed stile cabinetry construction
- Raised panel cabinetry in living / kitchen area
- 70-lb steel ball bearing guides, full extension
- Solid wood drawer construction
- Hardwood mullion style fridge front
- Extendable free standing table and chairs
- Dinette ensemble with recliner (VBM)
- Self igniting 22" oven with 3-burner cook top
- Range cover
- Oak knife rack
- Adjustable pantry shelving
- Pull out kitchen faucet



CF305RS shown

OPTIONS

- Stainless steel kitchen sink
- Maximum lino
- Tri-Fold hide a bed sofa with pillows
- Rocker recliner chairs (VBM)
- Deluxe theater seating (VBM)
- Ceiling fan with light
- Fireplace
- Slideout sidewall light (VBM)
- Decorative chair rail in living / kitchen area slide (VBM)
- OHC above sofa / chairs in slideout
- Decorative wood slide fascias
- Water heater by-pass kit
- EZ winterization kit
- Backlit command center for switches
- 65amp converter with distribution center
- Bath skylight
- Built medicine cabinet
- Glass tub/shower enclosure (VBM)
- Pleated night shades in bedroom
- Deluxe bedding package
- Full trunk under bed storage
- Plywood bed base with strut assist
- Spacious bedroom closets
- Sliding mullion style wardrobe doors (VBM)
- Washer/dryer prep with vented closet doors (VBM)

- Fire extinguisher
- LP/CO2 detector
- Smoke detector

OPTIONS

- Rear hitch receiver
- Bumper mount grill
- Insulated windows
- 2nd power awning with LED lights (VBM)
- Rear cap (Caramel color)
- White high gloss sidewall (N/A with paint opt)
- Painted exterior (requires rear cap and includes Sahara high gloss)
- 2nd AC (lo-profile 13.5)
- Carpet in living area
- 32" TV with bracket in bedroom
- Slide awning package

SELECT PACKAGE (mandatory)

- 8cu ft refer
- 12v Multi-media sound system w/bluetooth
- Cruiser Black Label furniture
- Dark tinted safety glass windows
- Dual 30# lp tanks w/auto changeover
- Porcelain toilet with foot flush
- 32" - 46" LED TV in living area (VBM)

- Microwave
- 35,000 btu furnace
- 15K ducted air system with quick cool
- Spare tire
- Skylight in kitchen
- Solid surface kitchen countertops
- Pleated day/night shades in living area
- Polartec insulation package
- Aluminum rims
- Sahara high gloss sidewalls
- Electric awning with LED light
- Intelli-jacks leveling system
- EZ key fob remote
- Roto-flex pin box
- Maxx Air power vent with rain sensor (kitchen and bath)
- Cruiser Black Label memory foam mattress (60"x80")

DISCLAIMER: Product information is as accurate as possible at the date of publication of this brochure. All features, floorplans, and specifications in this brochure are subject to change without notice. Please also consult CrossRoads RV's website at www.crossroadsrv.com for more current product information and specifications. Tow Vehicle Disclaimer. CAUTION: Owners of CrossRoads recreational vehicles are solely responsible for the selection and proper use of tow vehicles. All customers should consult with a motor vehicle manufacturer or their dealer concerning the purchase and use of suitable tow vehicles for CrossRoads RV products. CrossRoads RV disclaims any liability or damages suffered as a result of the selection, operation, use or misuse of tow vehicle. CROSSROADS RV'S LIMITED WARRANTY DOES NOT COVER DAMAGE TO THE RECREATIONAL VEHICLE OR TOW VEHICLE AS A RESULT OF THE SELECTION, OPERATION, USE OR MISUSE OF THE TOW VEHICLE.



CF305RS shown