

# TRADITION

*Create Yours Today*



*An Inherent Legacy of Higher Standards*

[www.drvsuites.com](http://www.drvsuites.com)





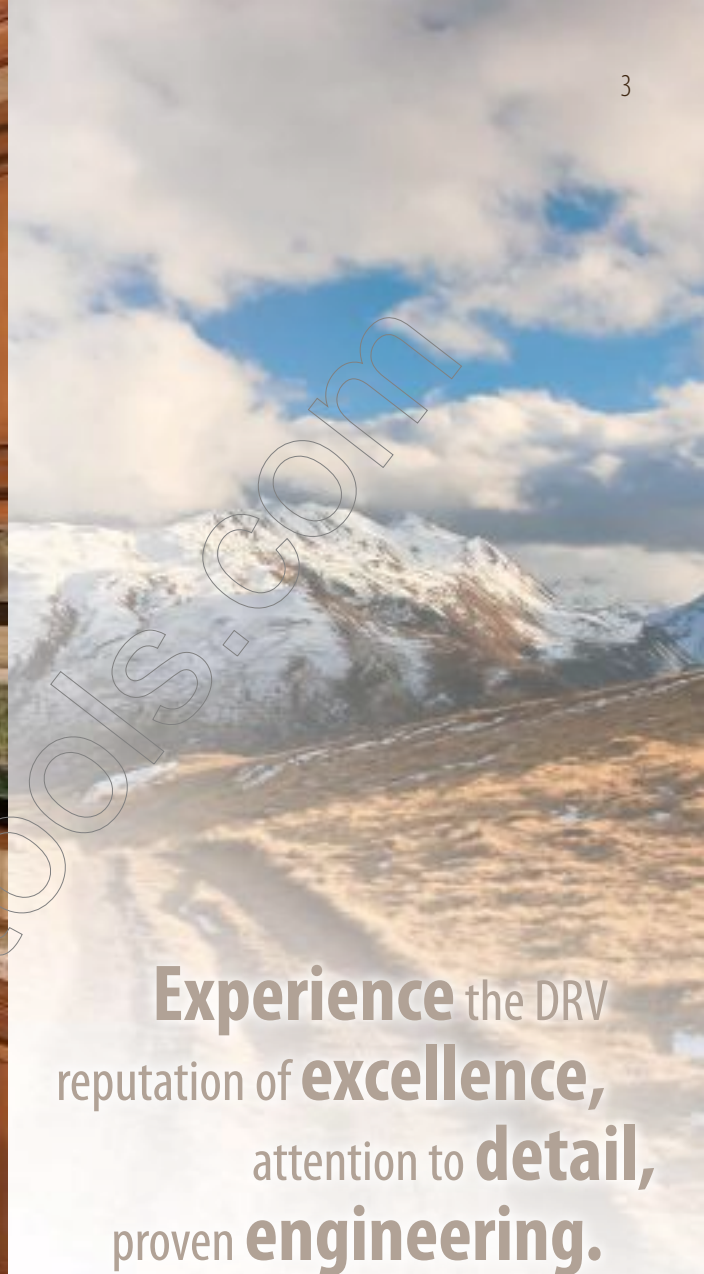
# TRADITION





360RSS shown in Tropical Oasis/New England Cherry

From the company known for setting higher standards for luxury extended stay travel, this same inherent quality is proudly displayed in our newest value-packed line which is more affordable than ever.



**Experience** the DRV  
reputation of **excellence**,  
attention to **detail**,  
proven **engineering**.







**360RSS shown in Tropical Oasis/New England Cherry**

Featuring the rich, deep tones of glaze-enhanced cherry stained cabinetry, the kitchen dinette area displays attention to detail with space and well organized storage. Residential height solid surface counters, including range cover, pendant lights over the kitchen island and solid hardwood dinette table are standard. The table includes a self-storing leaf and the stylish chairs are extra large with comfortable spring support.

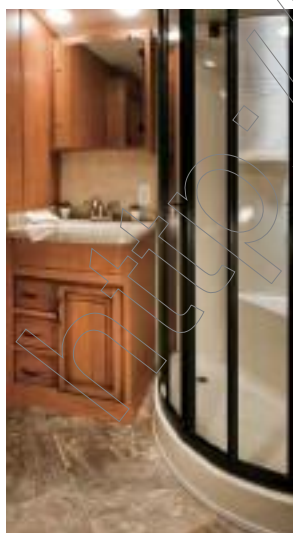


**Shown:  
Optional New England  
Cherry folding chair.**





## Residential styled **design** and **sophisticated** **decor**



Adding to the pleasure of your extended stay travel are features such as the convenient pull-out hardwood desk with power strip, available on some models. Other features include large mirrored medicine cabinet, a spacious corner shower with skylight and the standard prep for an optional washer/dryer, on all models.







**390FLS** shown in Tropical Oasis/New England Cherry

Centered around the 50" LED TV, our spacious front living room, with 6' 7" ceilings and extended upper deck, offers two full length leather sofa's and provides plenty of living space. Encompassed in quality and comfort, this full-time floorplan is sure to impress.





Four season  
**comfort** is  
**built in,**  
not added on.



Large counter top workspace features stainless steel dual deep basin sink with residential style pull-out faucet. The queen size Tip Top Comfort memory foam mattress is standard and features full under-bed storage.





**380RES** shown in Tropical Oasis/New England Cherry

Small details deliver major impact! Hidden cabinet hinges, raised panel door styling with matching refrigerator door panels, and lots of pantry space... some even hidden behind wide decorative moldings. All space is used effectively.







You'll always **enjoy**  
**great views,**  
inside and out.



By simply adding an angle to the overhead cabinets, the kitchen/dining and living room spaces are subtly defined. The straight roofline design features overhead cabinetry and oversize windows to surround the entire living space.





**385RSS shown in Stormy Cove/New England Cherry**

Fully designed and equipped for four-seasons comfort, a change of scenery, a change of climate are all a part of extended stay travel. Wherever you go, relax in front of the fireplace and enjoy the power lift 47" HD LCD TV with DVD and surround sound system - all standard.





Each new day,  
as **comfortable**  
as the last.



Experienced, innovative designers utilize all space to the best advantage. Large pantry storage, always appreciated by extended stay travelers, and top quality components such as full extension, metal roller drawer guides provide for years of trouble free service.





### Autumn Spice



### Stormy Cove



### Tropical Oasis



Storage and pantry space, for the extended stay traveler, is always considered a priority.



With full extension steel roller guides, this hardwood slide out, equipped with power strip delivers real convenience.



Residential washer/dryer hook-up in laundry closet.

### STANDARDS \* OPTIONS

#### Interior:

- Domed Interior Roof Design
- Recessed Halogen Pot Lights Throughout
- Increased Slide Out Heights w/ Larger Windows
- Residential Height Cabinetry
- Shaw Residential Carpet
- \* Louisiana Carpet Cut
- Residential Grade Linoleum Floor Covering
- Rebond Carpet Pad
- \* Cherry Stained Custom Cabinetry
- \* Chestnut Maple Stained Custom Cabinetry
- Hardwood Fascia Trim Around Slide Outs
- Indirect Lighting above Cabinetry
- Luxury Valance Design w/ Leather Accent
- Oil Rubbed Bronze Hardware & Fixtures Throughout
- Concealed Hinges On All Cabinet Doors
- Metal Roller Bearing Drawer Guides w/ Full Extension
- Privacy Night Shades On All Windows
- Howard Miller Wall Clock
- Grab Handle in Bathroom Hallway
- Full Length Overhead Dinette Cabinets

#### Interior/Living Room:

- Fireplace w/ LED Lighting & Wireless Remote
- Power Lift TV (Rear Entertainments)
- 47" HD LCD Television w/ DVD Player & 5.1 Surround Sound System
- 50" HD LED Television w/ DVD Player & 5.1 Surround Sound System (390FLS)
- Leather Wall Hugger Recliners
- Leather Sofa
- Hide-A-Bed Mattress (most models)
- Overhead Cabinetry
- Pull-Out Drawer Above Fireplace (380RES)
- Magazine Rack (340RES & 380RES)

#### Interior/Kitchen:

- Whirlpool Microwave
- \* GE Profile Convection Microwave

- Amana 3-Burner Cooktop w/ Gas Oven
- \* Cooktop Only w/ 3 Drawers
- 13cu. ft. Refrigerator w/ Raised Panel Wood Inserts
- Double Deep Bowl Stainless Steel Sinks
- Floor To Ceiling Pantry w/ Adjustable Shelves
- Custom Multi-Function Pantry w/ Pull-Out Drawers & Appliance Tray (some models)
- Custom Pull-Out Hardwood Desk w/ Power Strip (most models)
- Pull-Out Trash Can Cabinet w/ 13gal. Trash Can
- LG Solid Surface Countertops w/ Sink Covers
- LG Solid Surface Cooktop Covers
- Residential Kitchen Faucet w/ Pull-Out Sprayer
- Backsplash Design w/ Glass Tile Inserts
- Double Spice Rack
- Pendant Lighting Over Dinette & Island
- Hardwood Dinette Table w/ Extension & Wood Pedestal
- Extra Large Dinette Chairs w/ Seat Spring Support (2)
- \* New England Cherry Folding Chairs (2)
- \* Chestnut Maple Folding Chairs (2)
- Tradition Picture Frame
- \* Fantastic Fan w/ Wall Switch In Kitchen

#### Interior/Bath:

- LG Solid Surface Countertops
- Sink Vanity w/ Bank of Drawers
- Medicine Cabinet w/ Mirrored Front
- Shower Skylight
- 48" Fiberglass Shower (some models)
- Fiberglass Corner Shower (some models)
- \* Tub/Shower Combo
- Residential Commode w/ Spray Assist
- Fantastic Fan Create-A-Breeze

#### Interior/Bedroom:

- Queen Bed w/ Tip Top Comfort Memory Foam Mattress
- \* King Bed
- Night Stand
- 110V Outlets on Each Side of Queen Bed
- \* Fantastic Fan w/ Wall Switch In Bedroom
- Wood Dresser w/ 6-Drawer Storage
- 6'7" Center Bedroom Height



Chestnut Maple

New England Cherry



Optional Full Body Paint

- Walk-In Front Wardrobe w/ Built In Hardwood Dresser
- 26" HD LED Bedroom TV w/ Speakers
- Wired & Ducted for Second Bedroom A/C
- Separate A/C Bedroom Thermostat Control
- Wood/Mirrored Wardrobe Doors

### Frame/Axles/Running Gear:

- 12" I-Beam Frame (96" Wide)
- Twin 7000lb E-Z Lube Axles
- 16" E-Rated Tires
- ★ Goodyear 16" G-Rated Tire Upgrade (Including Spare)
- 12 x 2 Electric Drum Brakes
- ★ Kodiak Disc Brake Package (Includes 8000lb Axles)
- Aluminum Rims w/ 8 Lug Bolts
- Spare Tire & Carrier
- Trailair® EquaFlex Suspension
- Extended Heavy Duty Pin Box
- ★ Trailair® Air Ride Pin Box
- Level-up (6-Jack Hydraulic Leveling System)
- 1-Touch Automatic Leveling

### Systems:

- 50amp Service w/ Detachable Cord
- Copper Water Manifold System
- Pex Water Lines
- ★ Water Filtration System
- Residential Washer/Dryer Hook-up Center
- ★ Splendide 2-Piece Front Load Washer/Dryer
- 10gal. DSI Gas/Electric Hot Water Heater
- Water Heater Bypass
- Dual 30lb Propane Bottles
- ★ 40lb LP Bottles
- 15K BTU Main A/C
- Bedroom A/C Prep
- ★ 15K BTU Ducted A/C (Bedroom)
- ★ Heat Pump For A/C
- Perimeter Ducted A/C Vents w/ Direction Flow Design
- Superior Outside Service Command Center
- Water Pump Control Switch In Outside Command Center
- Dirt Devil Central Vacuum
- Satellite Prep (Roof & Ground Prep)

- ★ Winegard Traveler Series Satellite for Direct TV
- HD TV Antenna
- Cable Hookup
- Outside Shower
- 40,000BTU Furnace System w/ Custom Plenum
- Perimeter Heat Ducting in Living Room
- 6" Extra Large Heat Ducts T/O
- Heated Bathrooms
- Heated & Enclosed Holding Tanks
- ★ Heat Pads On Holding Tanks w/ Elbow Heaters
- 12V Heavy Duty Battery
- Battery Disconnect
- 60amp Power Converter w/ Charge Wizard
- ★ Generator Prep
- Solar Prep
- ★ Onan 5500 LP Marquis Gold Generator
- Industrial Hydraulic System (Slides & Jacks)
- Hydraulic Bedroom Slide (390FLS)
- Electric Bedroom Slide
- ★ Slide Toppers (Triple Slide)
- ★ Slide Toppers (Quad Slide)

### Holding Tanks:

- 100gal. Fresh Water Tank
- 90gal. Grey Water Tank
- 45gal. Black Water Tank

### Exterior:

- Power Awning w/ Aluminum Weather Shield
- Scare Lights
- Step Light
- Over The Door Exterior Porch Light
- Expanded Front Storage Compartment
- Felt-lined Basement w/ Diamond Plate
- Slam Door Latch System on All Exterior Doors
- Extra Thick Baggage Compartment Doors on Gas Struts
- Washable Storage Compartment Liner
- Recessed Exterior Running Lights
- Automotive Style Rear Tail Lights
- LED Docking Lights Under Front Cap
- Exterior Grab Handle

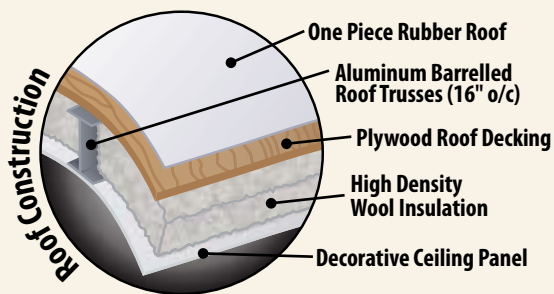
- High Gloss Gelcoat Exterior Fiberglass
- Custom Colored Exterior Graphic Package w/ Partial Paint
- ★ Full Body Paint w/ Clear Coat
- Frameless Thermopane Windows
- Straight Roof Line Exterior Profile
- Automotive Style Molded Front & Rear Caps
- One Piece Rubber Roof
- 78" Gelcoat Fiberglass Exterior Entry Door w/ Removable Storm Door Panels
- Ladder
- ★ 4-Step Entry
- ★ 2" Utility Hitch w/ 4 Way Flat Plug
- Outside Gas Grill Hook-Up
- Outside TV Hook-Up in Basement

### Construction:

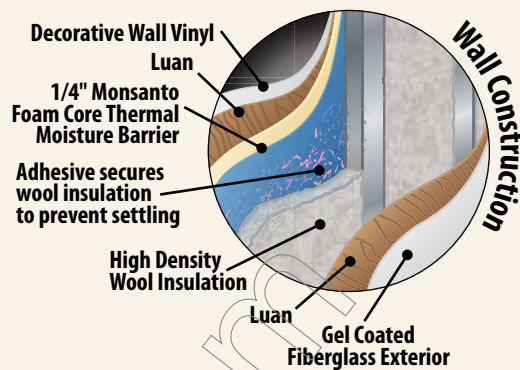
- 16" O.C. Aluminum Stud Construction on Walls, Slides, and Roof
- 14" O.C. Aluminum Stud Construction on Floor
- Hung Sidewall & Slide Out Wall Construction
- Mechanically Fastened (Screwed & Glued) Floor, Wall & Slide Out Aluminum Cage Construction
- NO Lamination In Our Build Process
- Subzero Thermo-Pack High Density Insulation
- Residential Rated R11 Wall Insulation
- Residential Rated R11 Slide Out Wall Insulation
- Residential Rated R29 Floor Insulation
- Residential Rated R25 Roof Insulation
- 5/8" Tongue & Groove Plywood Flooring
- 3/8" Plywood Roof Decking
- 2 1/4" Thick Sidewalls & Slide Out Construction
- 1/4" Monsanto Foam-Core Vapor Barrier in Walls & Slide Out Walls
- ★ RVIA Seal
- ★ CSA (Canadian Units Only)

**Coach-Net®**  
EMERGENCY ROADSIDE ASSISTANCE  
is provided with purchase of each Tradition

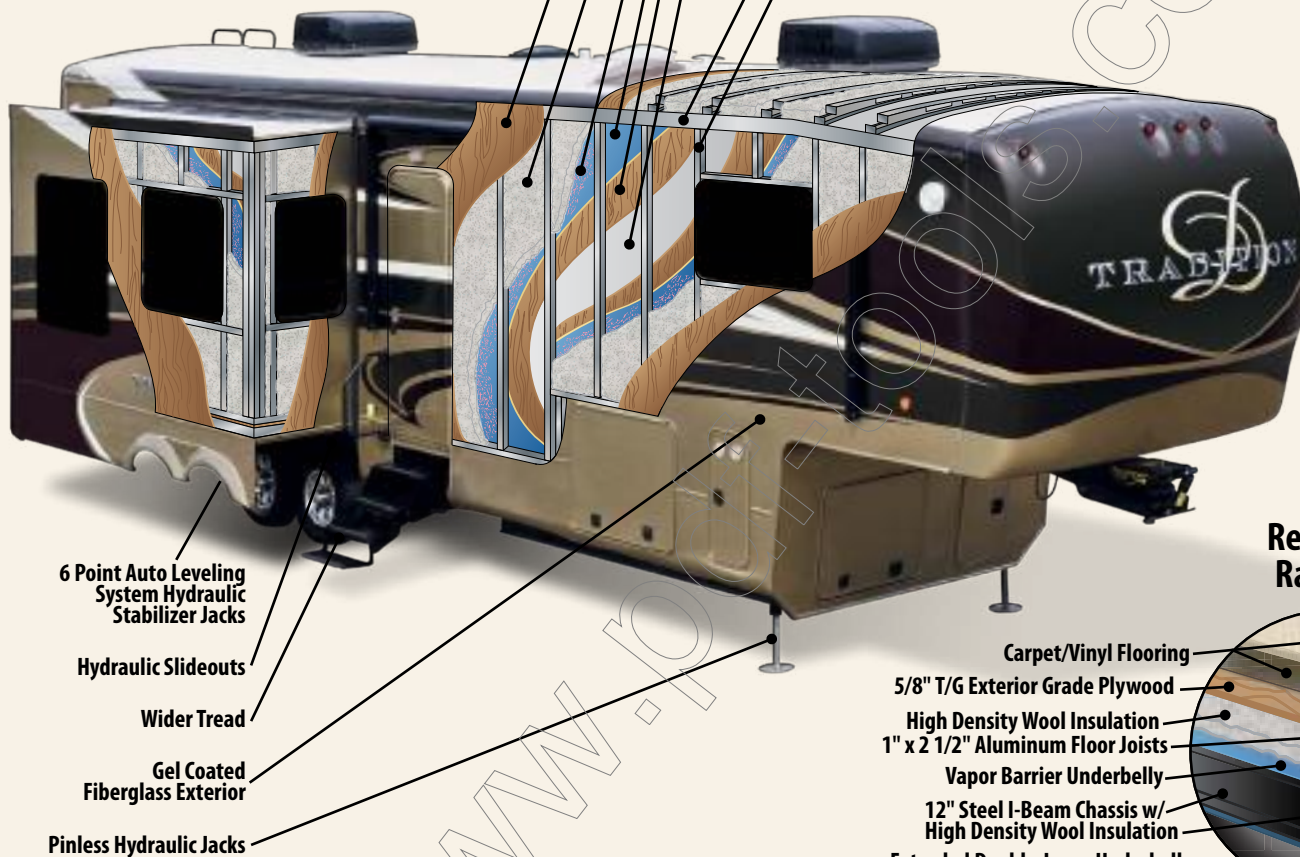




## Residential Rated R25



## Residential Rated R11



## Residential Rated R29



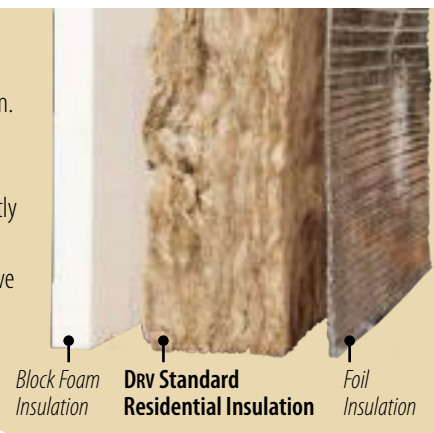
## Subzero Thermo-Pack Insulation package

is standard on Tradition and encases the entire structure resulting in better year round comfort control of your extended travel suite. Residential style High Density Wool Insulation is utilized in the roof, side walls, sub-floor assembly and is even added to the underbelly frame space. High density wool provides improved efficiency by filling any voids, and we even take the extra step to glue-apply the wool insulation within the walls to totally eliminate settling.



## Just compare!

Many RVs use rigid block foam. Although a good insulator, this method leaves too many uninsulated voids which greatly compromises the efficiency. Others use only a thin reflective foam barrier, not practical for multi-seasonal extended stay travel.



EcoBatt High Density Wool Insulation is derived from renewable materials.





Standard 1-Touch Automatic Leveling



Optional rear 2" hitch receiver.



Standard Level-Up™ provides maximum stability with six heavy duty hydraulic jacks.

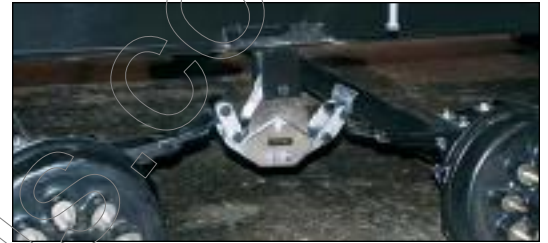


Molded in automotive tail lights.

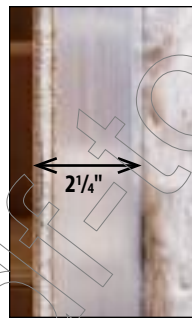


Optional TrailAir® Air Ride pin box provides a smoother ride plus better handling while minimizing noise and vibration.

TrailAir® EquaFlex Suspension is standard. Kodiak Disc Brake Package, that includes 8000 lb capacity axles, is available as an option.



All aluminum sills and wall studs are mechanically joined and the aluminum sill tubing is fully reinforced internally with wood, providing greater strength and stability when it is "bolted-through", never screwed, to the sub-floor structure and the steel frame below.

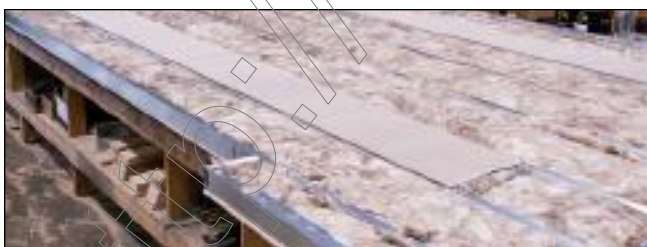


#### A DRV EXCLUSIVE

Thicker side walls allow for high density wool insulation, with an **integrated 1/4" thick foam core moisture barrier**, to eliminate condensation and add an additional insulating moisture barrier layer.



The coach and slide outs have aluminum wall studs and roof trusses positioned 16" on-centers, and the aluminum sub-floor joists are 14" on-center. Residential style high density wool insulation, in the side walls, is glued into place to prevent future settling. All spaces and voids are filled with wool insulation as well.



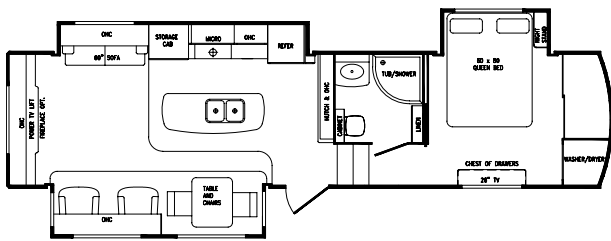
High density wool insulation blankets the underbelly frame spaces and the flooring assembly, to provide added protection for the water systems. Perimeter heating features 6" ducts and custom plenum with 5-duct heating.



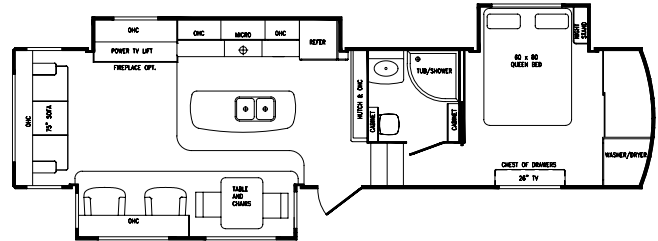
The large pass-through basement storage area is felt lined and provides abundant space for extended travel lifestyles. The copper water manifold system is easily accessible and heavy duty basement doors open easily and close securely with two gas assist lift arms and lockable slam latches.



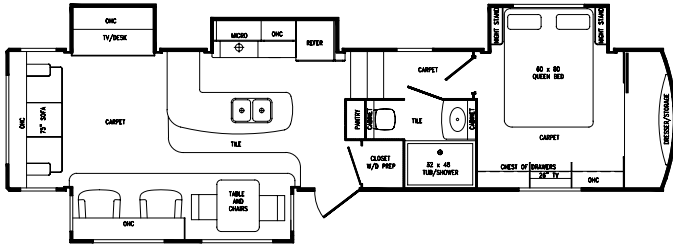




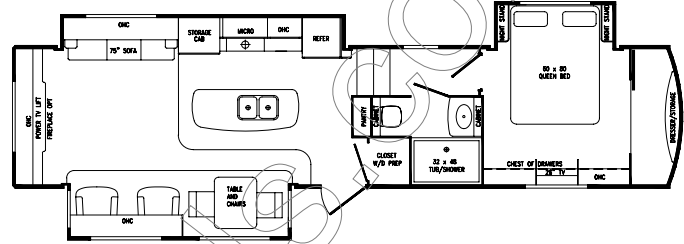
**340RES** Length 36' 1"  
Dry Weight 11,725# • Dry Pin Weight 2,950#



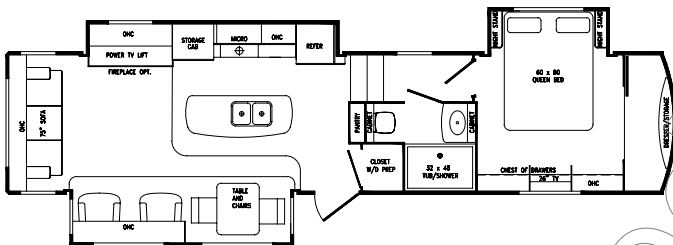
**360RSS** Length 37' 1"  
Dry Weight 11,850# • Dry Pin Weight 2,875#



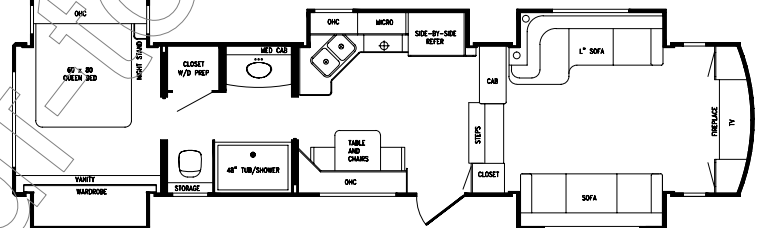
**370TKS** Length 38' 3"  
Dry Weight 11,850# • Dry Pin Weight 2,875#



**380RES** Length 38' 3"  
Dry Weight 11,850# • Dry Pin Weight 2,875#



**385RSS** Length 38' 3"  
Dry Weight 11,850# • Dry Pin Weight 2,875#



**390FLS** Length 39' 3"  
Dry Weight 13,125# • Dry Pin Weight 2,825#



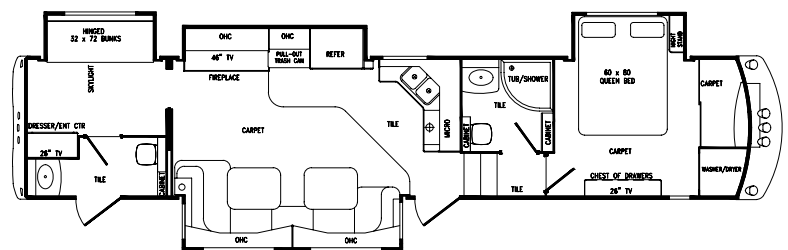
0160 W 750 N • PO Box 235 • Howe, IN 46746

Factory tours by appointment,  
please call for specifics 260-562-1075

www.drvsuites.com

facebook

twitter



**399BHQ** Length 41' 5"  
Dry Weight TBD# • Dry Pin Weight TBD#

*Coach lengths measured from front pin box to rear bumper.*



This brochure is based upon the latest product information available at the time of printing. DRV reserves the right to make changes at any time to prices, colors, materials, equipment, specifications and models, and to discontinue models without notice or obligation. Color representations are as close as photographic/print reproduction will allow. All specifications are approximate and dimensions nominal. Text and/or photos may represent equipment or décor items which may not be included as a standard item in your model of choice. © 2012 DRV • 9/1/12