

DUTCHMEN

TRAVEL TRAILER & FIFTH WHEEL FLOOR PLANS & SPECIFICATIONS

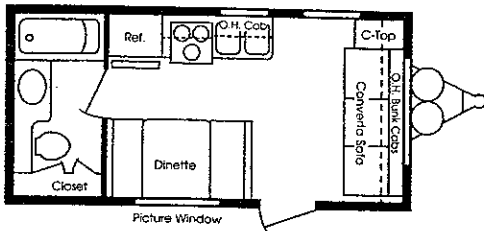


DUTCHMEN
VALUE PLUS
CLASSIC & ROYAL

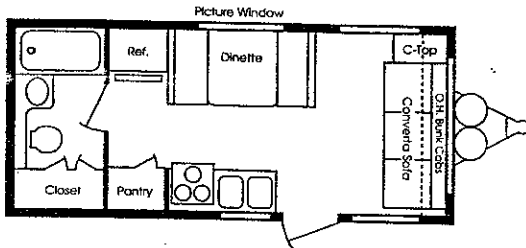
Dutch
Craftsmanship,
Quality and
Value



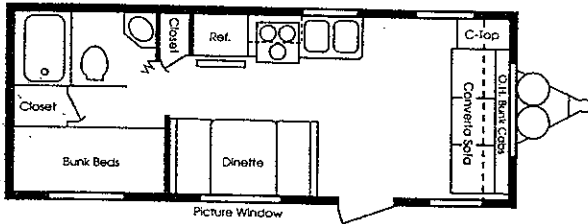
18 RB CLASSIC



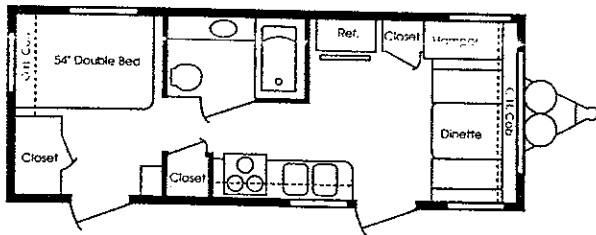
20 RB CLASSIC



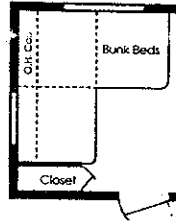
22 BH CLASSIC



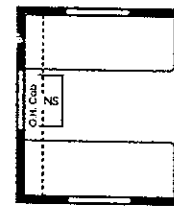
22 FD CLASSIC/ROYAL



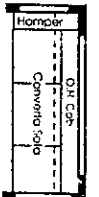
OPTION:
Triple Bunks



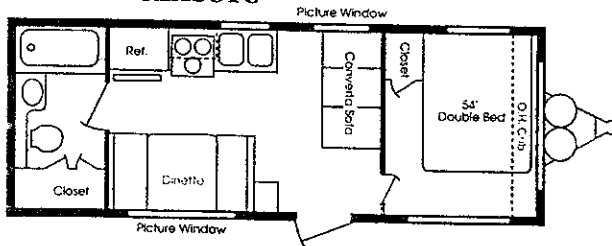
OPTION:
Sofa



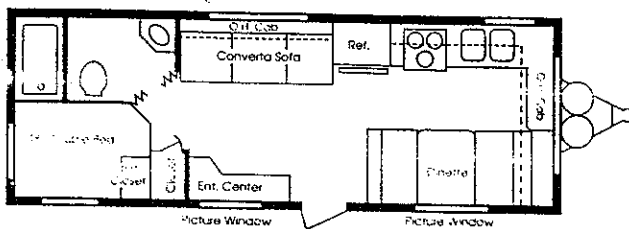
OPTION:
Twin beds
available
in place of
standard
bed.



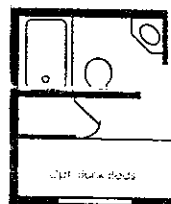
24 FB CLASSIC



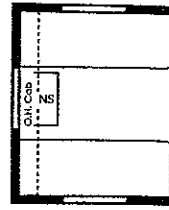
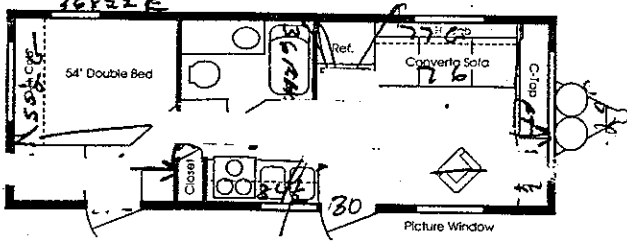
24 FK CLASSIC/ROYAL



OPTION:
Bunk Beds

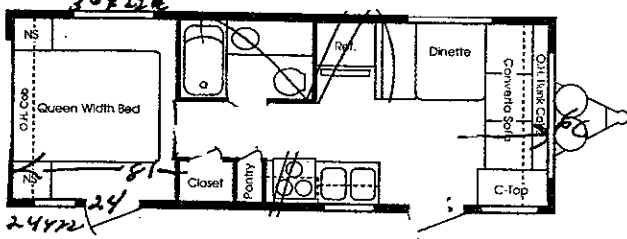


24 FL CLASSIC

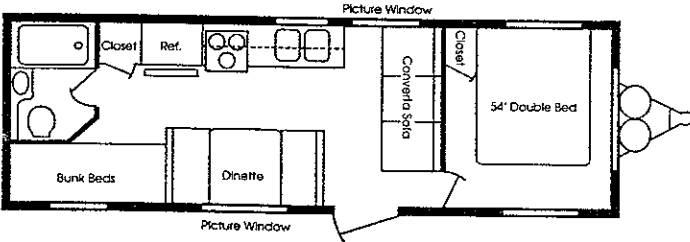


OPTION:
Twin beds
available in place
of standard bed.

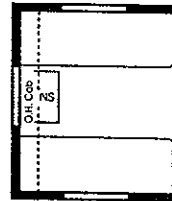
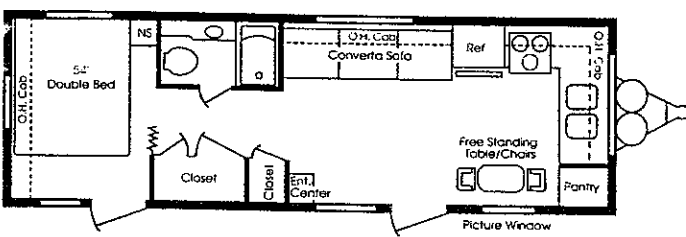
24 FL-D CLASSIC



26 B2 CLASSIC

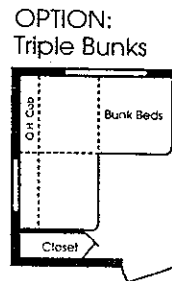
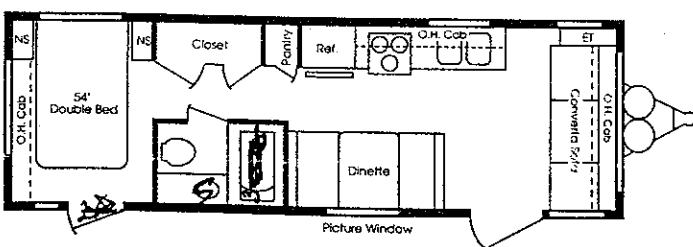


26 SB CLASSIC/ROYAL



OPTION:
Twin beds
available in place
of standard bed.
Models: 26 SB, 26 FL

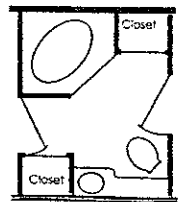
26 FL CLASSIC/ROYAL



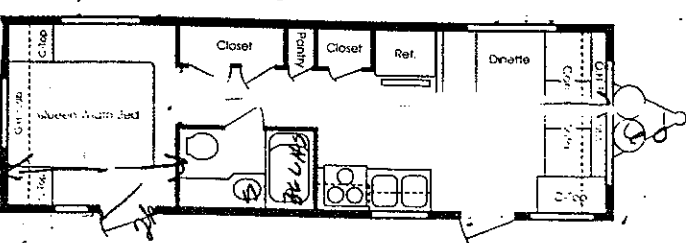
OPTION:
Triple Bunks

OPTION:
Twin beds
available in
place of
standard bed.
(See illustration
above)

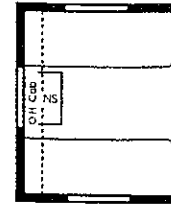
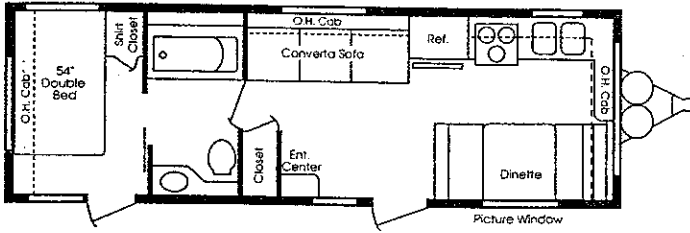
OPTION:
#2 Garden Bath



26 FL D CLASSIC

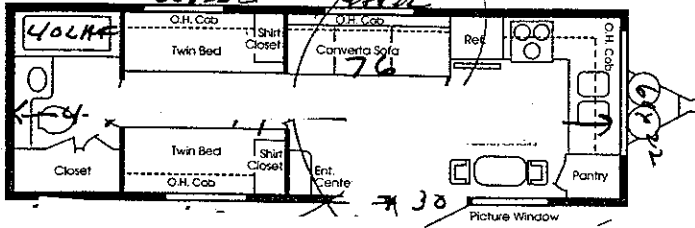


26 FK CLASSIC/ROYAL



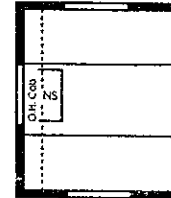
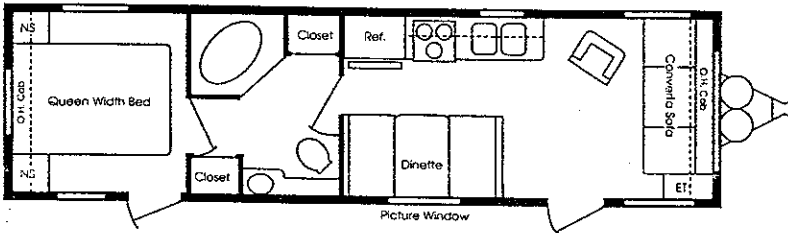
OPTION:
Twin beds
available in place
of standard bed.

26 TB CLASSIC/ROYAL



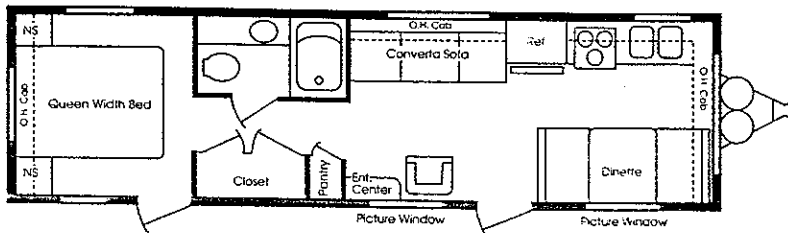
OPTION:
Stationary bunks
over twin beds.

30 FL CLASSIC/ROYAL

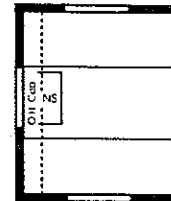


OPTION:
Twin beds
available in place
of standard bed.

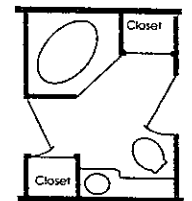
30 FK CLASSIC/ROYAL



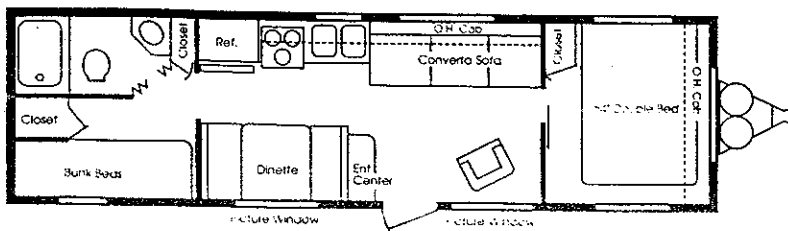
OPTION:
Twin Beds



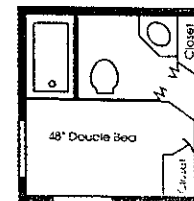
OPTION:
#2 Garden Bath



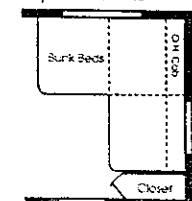
30 2B CLASSIC/ROYAL



OPTION:
Rear Double Bed

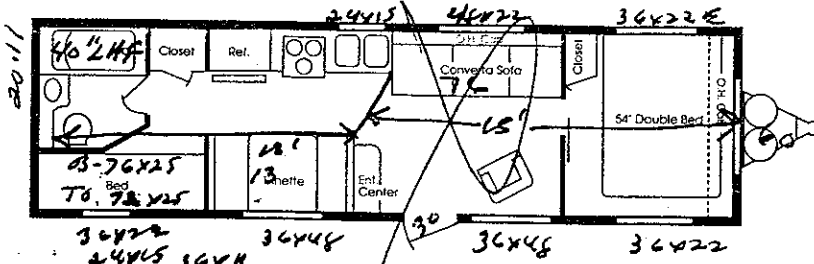


OPTION:
Triple Bunks

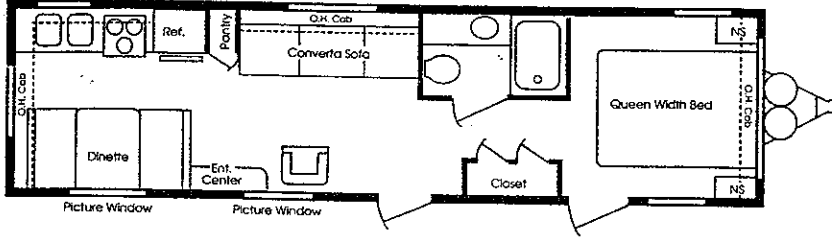


(Front bedroom only)

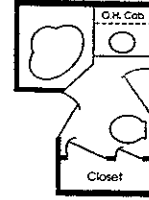
30 BH CLASSIC



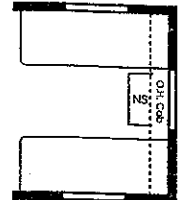
32 FB CLASSIC



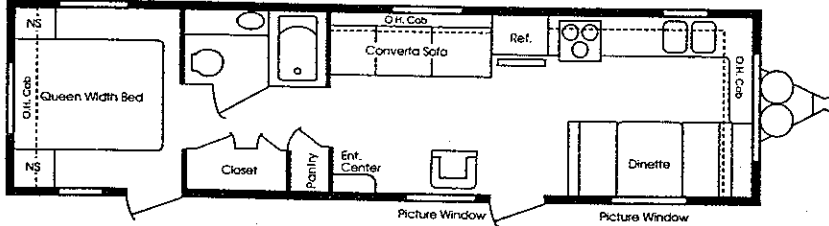
OPTION:
#2 Garden Bath



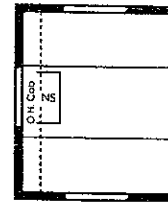
OPTION:
Twin Beds



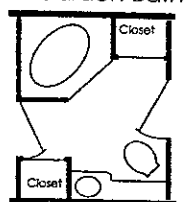
32 FK CLASSIC/ROYAL



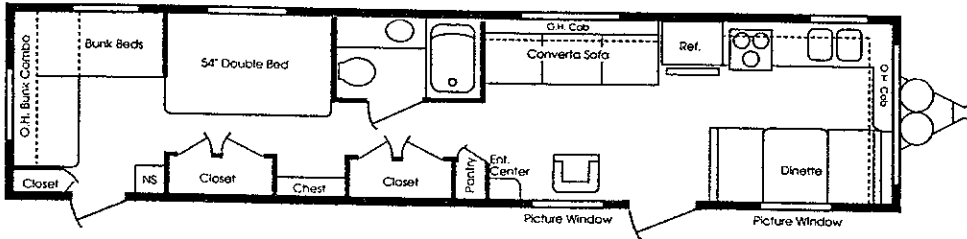
OPTION:
Twin Beds



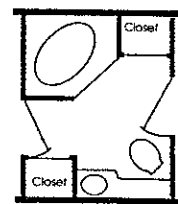
OPTION:
#2 Garden Bath



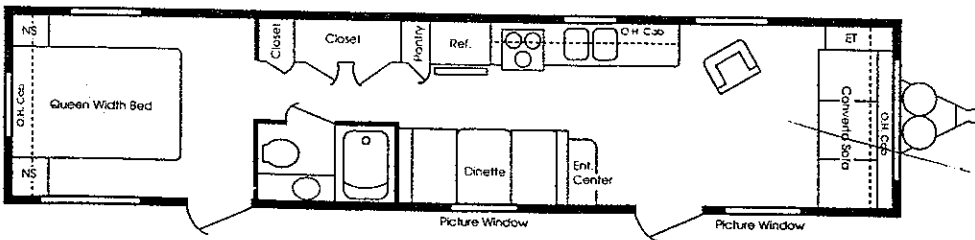
35 MS CLASSIC



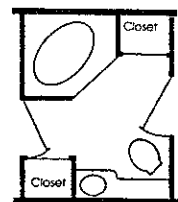
OPTION:
#2 Garden Bath



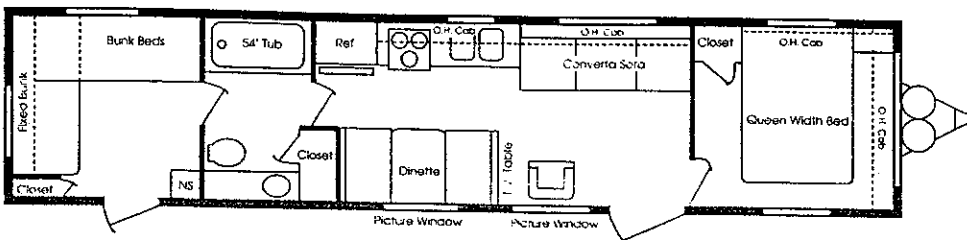
35 FL CLASSIC



OPTION:
#2 Garden Bath

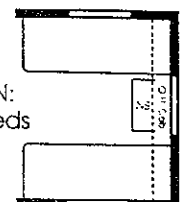


35 FB-2B CLASSIC



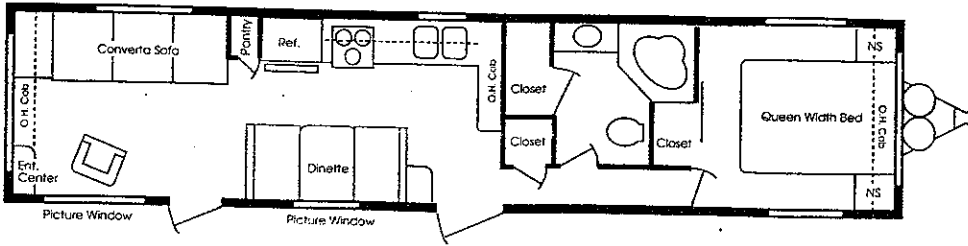
OPTION: Twin Beds
(See illustration below)

OPTION:
Twin Beds

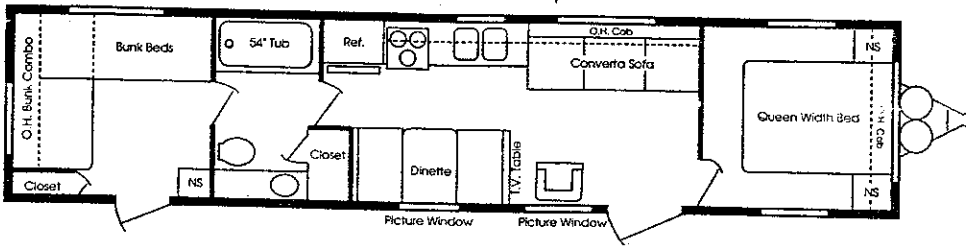


(Front bedroom only)

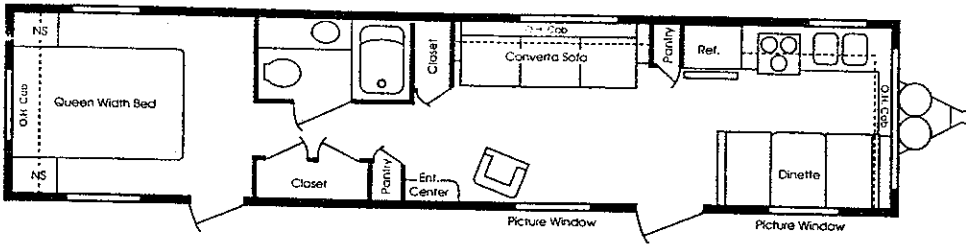
35 SA CLASSIC



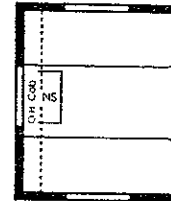
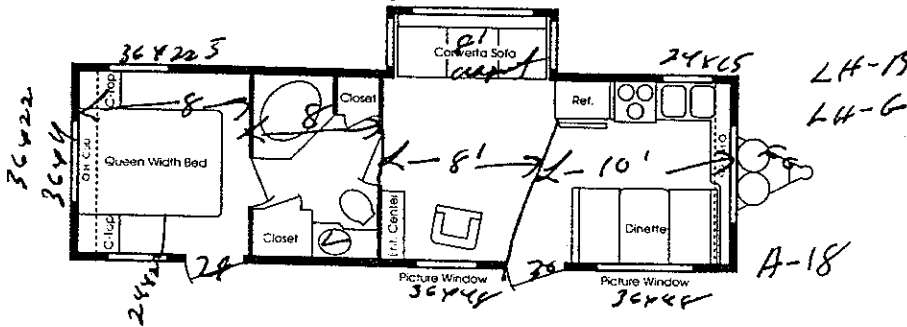
35 FB CLASSIC



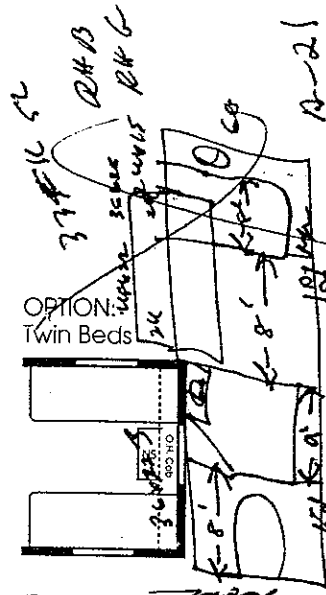
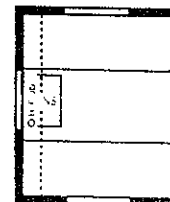
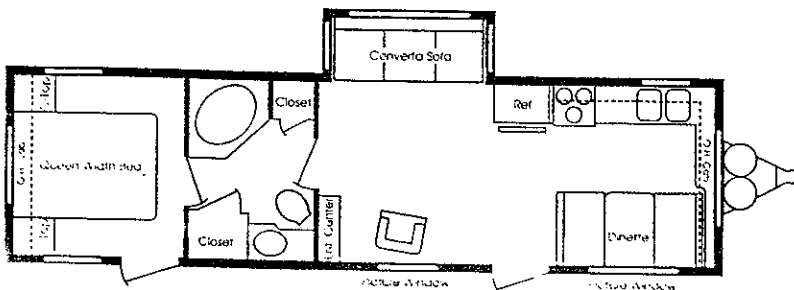
35 FK CLASSIC



31 FK-SL CLASSIC 225-C



33 FK-SL CLASSIC



(Front bedroom only)

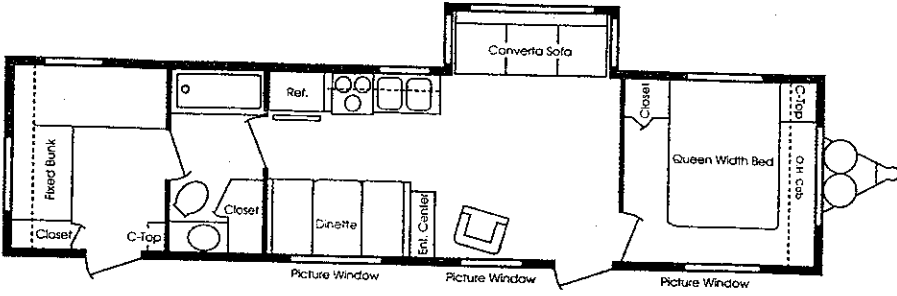
OPTION: #2 Garden Bath

OPTION: Twin Beds
(See illustration above)

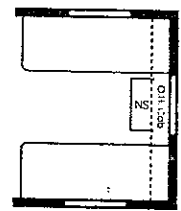
OPTION: Twin beds available in place of standard bed.

OPTION: Twin beds available in place of standard bed.

36 FB2B-SL CLASSIC

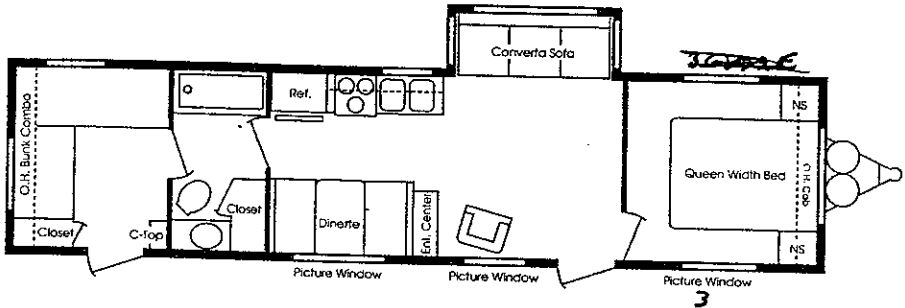


OPTION:
Twin Beds

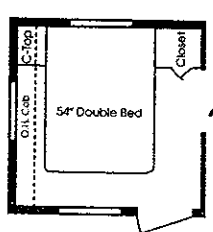


(Front bedroom only)

36 FB-SL CLASSIC

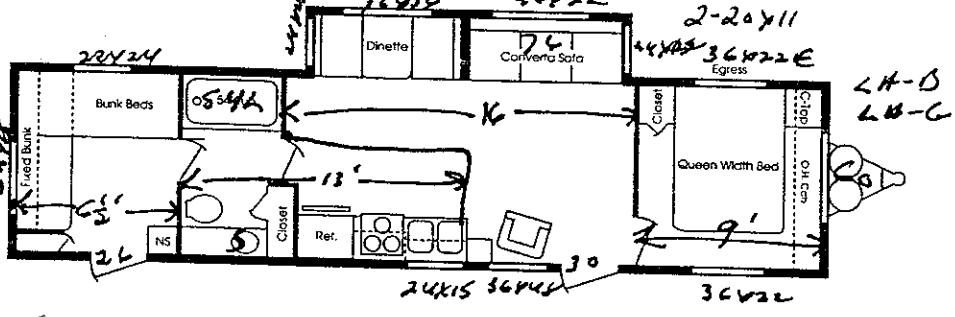


OPTION:
Rear Double

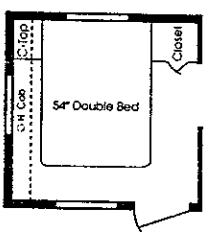


Top 72x25
M21-76x30
Bunk 72x30

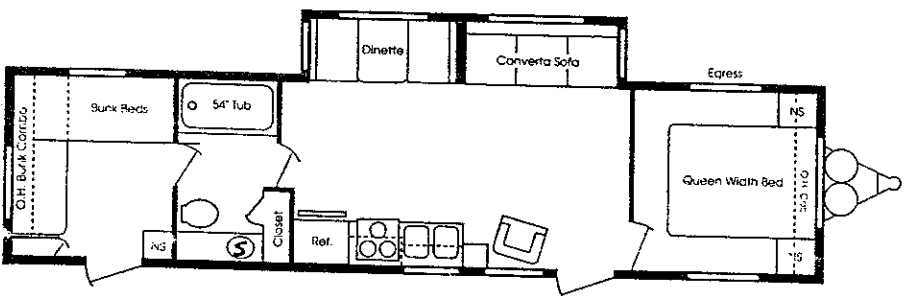
36 FB2B-DSL CLASSIC



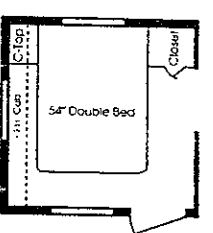
OPTION:
Rear Double



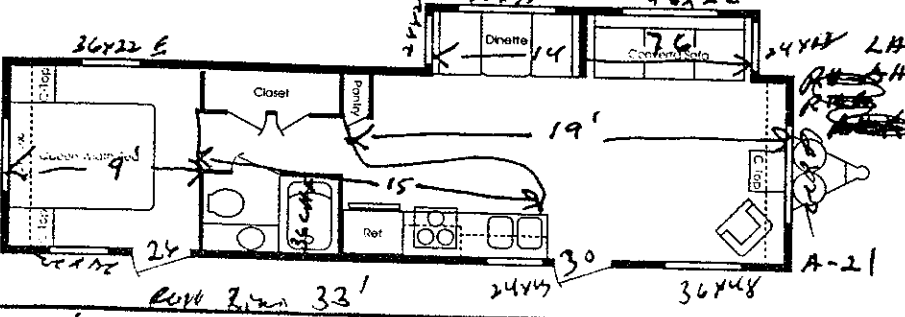
36 FB-DSL CLASSIC



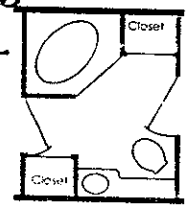
OPTION:
Rear Double



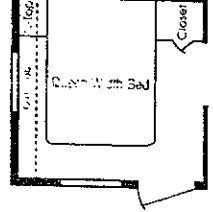
36 FL-DSL CLASSIC



OPTION:
Garden Bath



OPTION:
27-48x25
FB-15 24x75 90



36 FB-SL 11'-15" SLU RHC - LKRG
Pm-211

DM-33'

CB-5-14-17



CLASSIC SPECIFICATIONS

TRAVEL TRAILER

1994

COMFORT/ACCOMMODATIONS	18RB	20RB	22BH	22FD	24FB	24FL 24FK	24FLD	26SB	26FK	26B2	26FL	26FLD	26TB
Sleeping Area	2	2	3	2	3	3	2	2	3	3	3	2	2
Marine Toilet
GALLEY													
Double Door Refrigerator LP/Electric
3 Burner Range/Oven
HEATING													
Furnace w/12V Fan and Thermostat (BTU'S)	20M	20M	20M	20M	25M	25M	25M	25M	25M	25M	25M	25M	25M
Fiberglass Insulation
SELF CONTAINMENT													
Elec/LP Water Heater 6 Gal. w/Electric Ignition
Dual LP Tanks w/Regulator and Changeover (Gals.)	7	7	7	7	7	7	7	7	7	7	7	7	7
Dual Waste Water Holding Tanks (Approx. Gals.)	60	60	60	60	60	60	60	60	60	60	60	60	60
Demand Water System w/12V Pump (Approx. Gals.)	30	30	30	30	30	30	30	30	30	30	30	30	30
Water Heater By-Pass
ELECTRICAL													
Power Converter	45A	45A	45A	45A	45A	45A	45A	45A	45A	45A	45A	45A	45A
Ground Fault Interrupter
Power Cord w/Hatch
EXTERIOR													
Tandem Axle w/4 Wheel Electric Brakes
Skyline Roof Vents (#)	3	3	3	3	4	3	3	4	3	3	3	3	3
Front Radius Rockguard Awning
Rear Bumper w/Sewer Hose Carrier
Tinted Radius Torque Windows
Retractable Double Entry Steps (*Triple Steps)
Wheel Skirts
Awning Rail
LP Bottle Cover
DIMENSIONS													
Radial Tire-Size	ST205 75R15	ST205 75R15	ST205 75R15	ST205 75R15	ST205 75R15	ST205 75R15	ST205 75R15	ST205 75R15	ST205 75R15	ST205 75R15	ST205 75R15	ST205 75R15	ST205 75R15
Tire Load Range	C	C	C	C	C	C	C	C	C	C	C	C	C
Gross Dry Weight (Approximate)	3440	3700	4020	3715	4300	4215	4580	4575	4315	4455	4455	4400	4495
Hitch Dry Weight (Approximate)	420	400	540	498	520	594	760	865	538	484	691	680	728
Axle Dry Weight	3020	3300	3480	3217	3780	3621	3820	3710	3777	3971	3764	3720	3767
Gross Vehicle Weight Rating	7000	7000	7000	7000	7000	7000	7000	7000	7000	7000	7000	7000	7000
Width	8'0"	8'0"	8'0"	8'0"	8'0"	8'0"	8'0"	8'0"	8'0"	8'0"	8'0"	8'0"	8'0"
Length	19'4"	21'4"	23'4"	23'4"	25'4"	25'4"	25'4"	27'4"	27'4"	27'4"	27'4"	27'4"	27'4"
Coupler Class Used	4	4	4	4	4	4	4	4	4	4	4	4	4

Product information included herein is as accurate as possible at the time of printing. Subsequent refinements may be evident in the actual product. Specifications are subject to change without notice. All liquid capacities are approximate and dimensions are nominal.

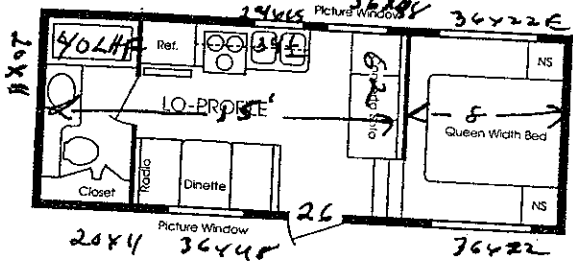


CLASSIC SPECIFICATIONS

TRAVEL TRAILER

											Single Slide Out Units			Double Slide Out Units	
30FK	30FL	30BH 30-2B	32FK	32FB	35FK	35SA	35FB	35FB-2B	35MS	35FL	31FK	33FK	36FB 36FB-2B	36FB 36FB-2B	36FL
3	3	4	3	3	3	3	4	4	4	4	3	3	4	4	4
.
.
.
.
.
31M	31M	31M	31M	31M	31M	31M	31M	31M	31M	31M	31M	31M	31M	31M	31M
.
.
7	7	7	7	7	7	7	7	7	7	7	7	7	7	7	7
60	60	60	60	60	60	60	60	60	60	60	60	60	60	60	60
30	30	30	30	30	30	30	30	30	30	30	30	30	30	30	30
.
.
45A	45A	45A	45A	45A	45A	45A	45A	45A	45A	45A	45A	45A	45A	45A	45A
.
.
.
3	3	3	4	4	4	4	4	4	4	4	3	4	4	4	4
.
.
.
.
.
.
.
.
ST205 75R15	ST205 75R15	ST205 75R15	ST225 75R15	ST225 75R15	ST225 75R15	ST225 75R15	ST225 75R15	ST225 75R15	ST225 75R15	ST225 75R15	ST225 75R15	ST225 75R15	ST225 75R15	ST225 75R15	ST225 75R15
C	C	C	C	C	C	C	C	C	C	C	C	C	C	C	D
5096	5095	4955	5315	5155	5595	5555	5715	5655	5515	5645	6240	6640	6320	8060	6920
771	694	507	925	584	925	661	814	774	888	784	1020	1100	700	1440	820
4325	4401	4448	4390	4571	4670	4894	4901	4881	4627	4862	5220	5540	5620	6620	6100
7000	7000	7000	7000	7000	7000	7000	7000	7000	7000	7000	7000	7000	7000	7000	7000
8'0"	8'0"	8'0"	8'0"	8'0"	8'0"	8'0"	8'0"	8'0"	8'0"	8'0"	8'0"	8'0"	8'0"	8'0"	8'0"
31'4"	31'4"	31'4"	32'11"	32'11"	35'11"	35'11"	35'11"	35'11"	35'11"	35'11"	31'4"	32'11"	35'11"	35'11"	35'11"
4	4	4	4	4	4	4	4	4	4	4	4	4	4	4	4

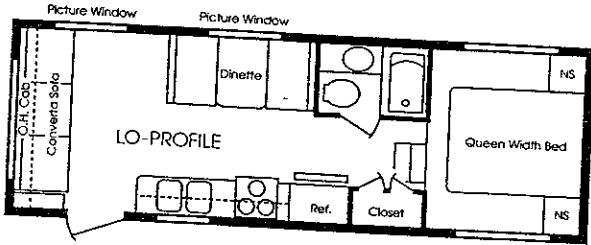
22 FWRB CLASSIC



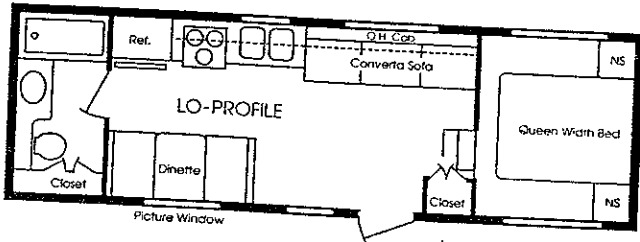
RH-BIKE
R4-6

CB. 10-5
Metal 23'6"
(EY 23'4")

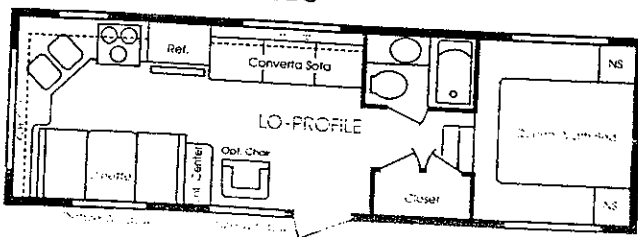
24 FWRL CLASSIC

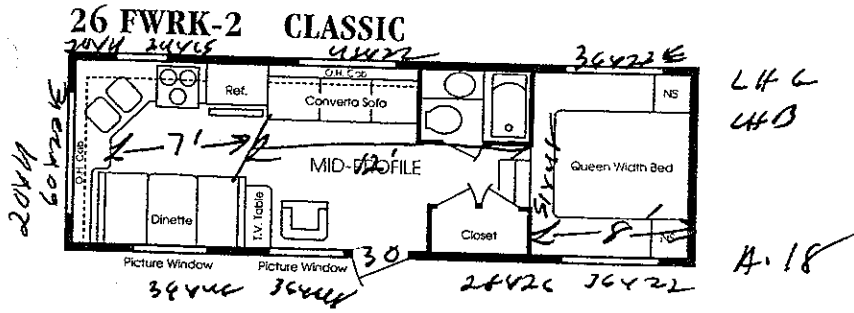


26 FWRB CLASSIC



26 FWRK CLASSIC



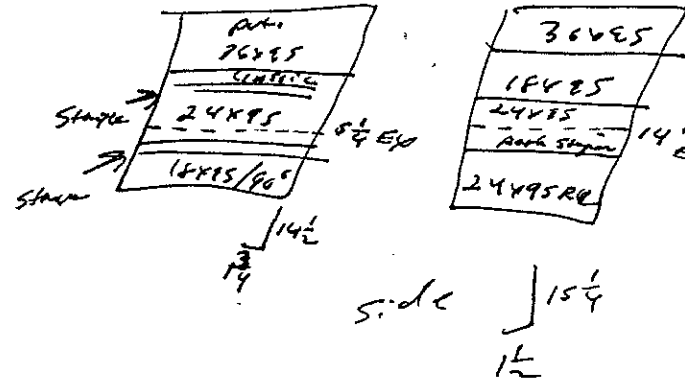
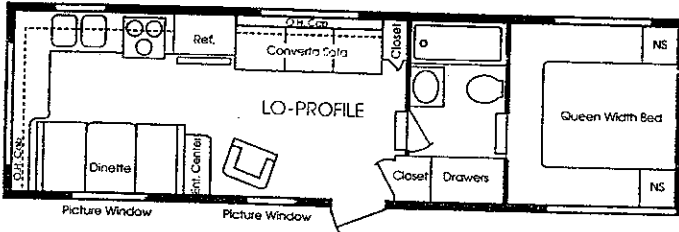


M-27'9" EX
27 1/2

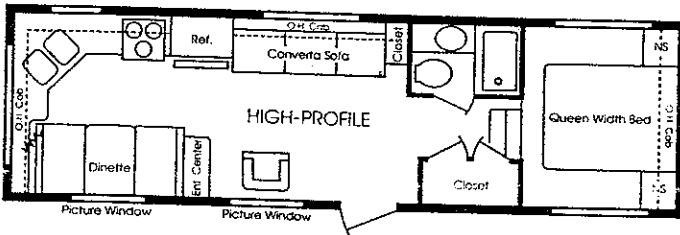
CB-13.6

26'x22'x6

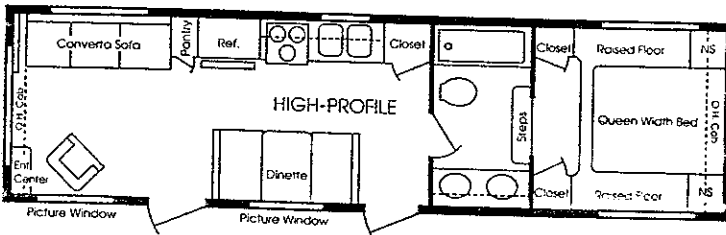
28 FWRK CLASSIC



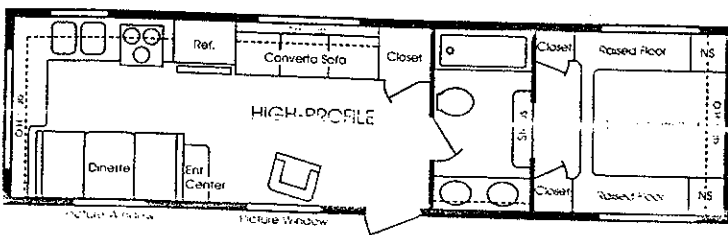
28 FWRK-2 CLASSIC



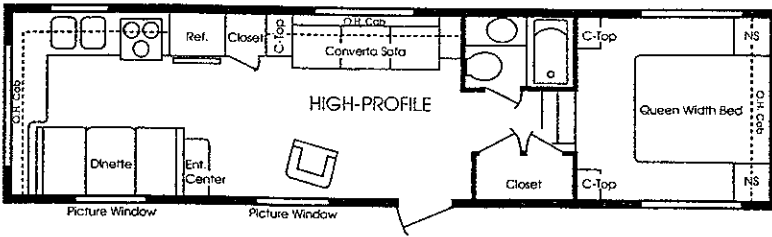
30 FWRL CLASSIC



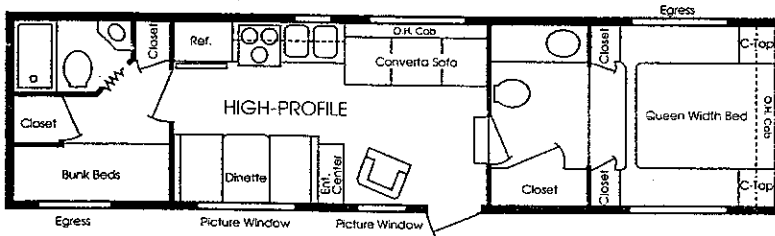
30 FWRK CLASSIC



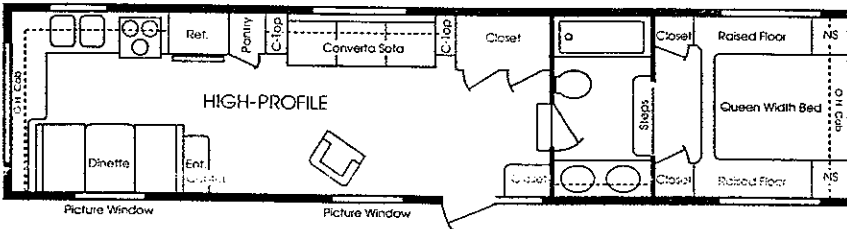
32 FWRK CLASSIC



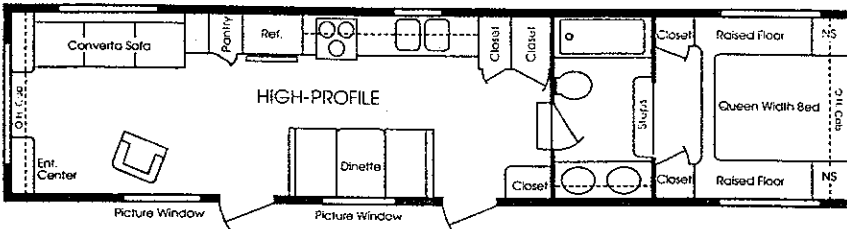
32 FW-2B CLASSIC



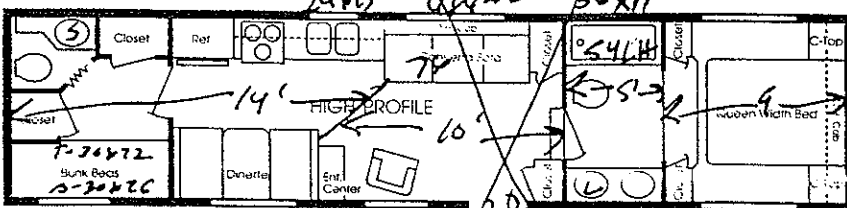
35 FWRK CLASSIC



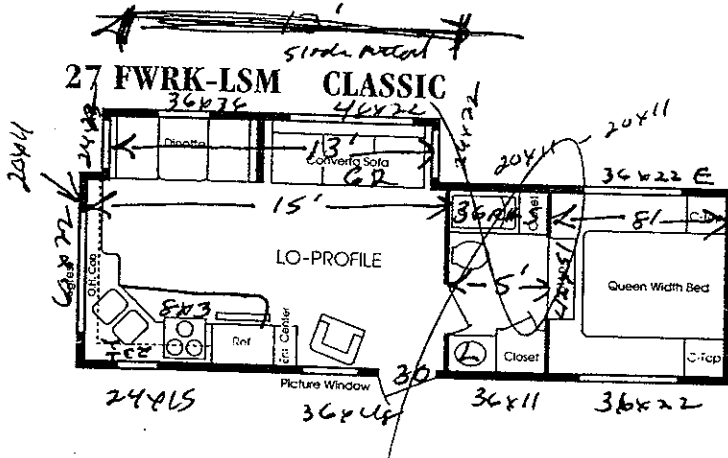
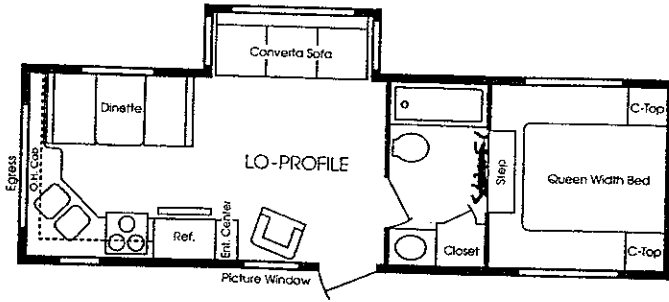
35 FWRL CLASSIC



35 FW-2B CLASSIC



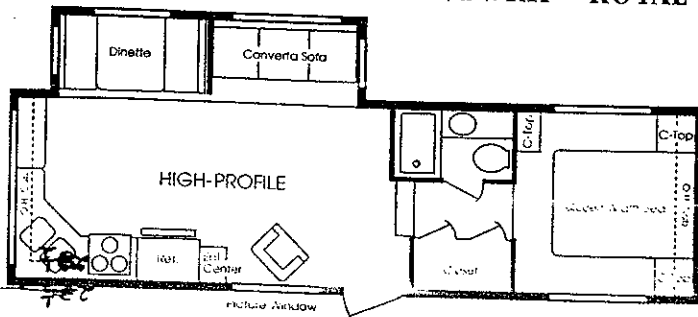
27 FWRK-LSL CLASSIC



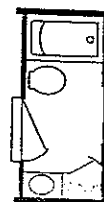
GR-LH
G-LH
BLK-LH

metal ~~28'~~ 28' CR. 13-13-3
P.M. 27'

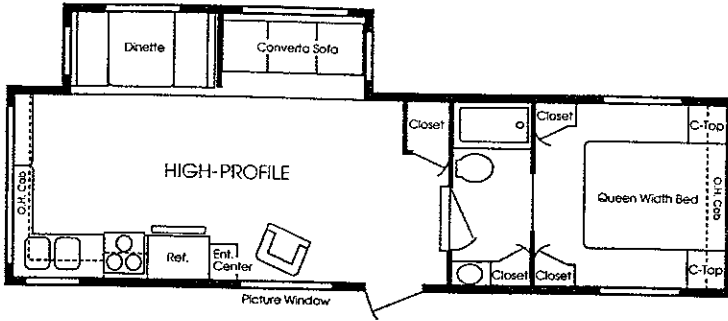
27 FWRK-SL CLASSIC / 27FWRK ROYAL



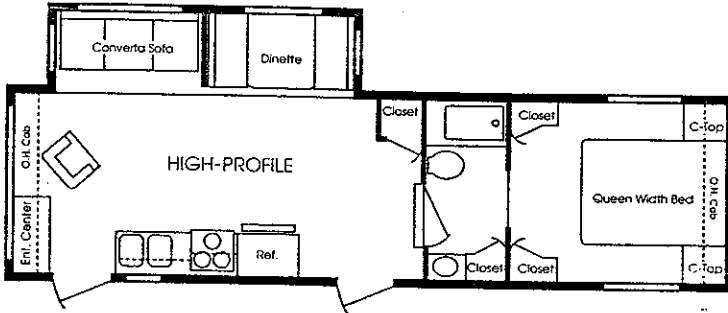
OPTION:
Walk Thru Bath



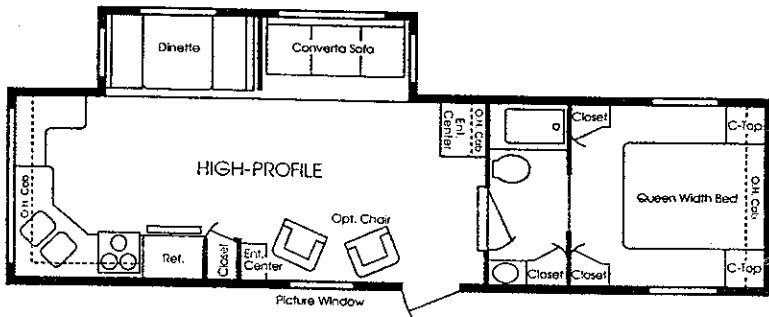
30 FWRK-SL CLASSIC / 30 FWRK ROYAL



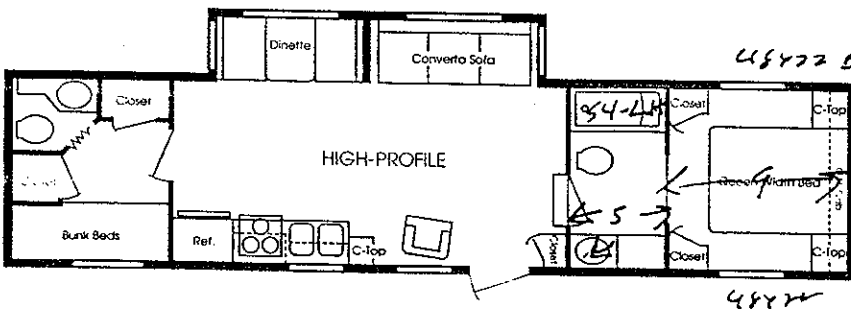
30 FWRL-SL CLASSIC / 30 FWRL ROYAL



33 FWRK-SL CLASSIC / 33 FWRK ROYAL



35 FW2B-DSL CLASSIC





CLASSIC SPECIFICATIONS

FIFTH WHEEL

1994

COMFORT/ ACCOMMODATIONS	22RB	24RL	26RB	26RK	26RK-2	28RK	28RK-2	30RL	30RK	32RK	322B	35RL	35RK	352B	SLIDE OUT UNITS						
															27RK	27RKLSL	27RKLSM	30RK	30RL	33RK	352BD
Sleeping Area	3	3	3	3	3	3	3	3	3	3	4	3	3	4	3	3	3	3	3	3	4
Marine Toilet
GALLEY																					
Dbf Door Refrig LP/Elec
3 Burner Range/Oven
HEATING																					
Furnace w/12V Fan and Thermostat (BTU'S)	25M	25M	25M	25M	25M	31M	31M	31M	31M	31M	31M	31M	31M	31M	31M	31M	31M	35M	35M	35M	35M
Fiberglass Insulation
SELF CONTAINMENT																					
Elec/LP Water Heater 6 Gal. w/Electric Ignition
Dual LP Tanks w/Reg. and Changeover (Gals.)	7	7	7	7	7	7	7	7	7	7	7	7	7	7	7	7	7	7	7	7	
Dual Waste Water Holding Tanks (Apprx. Gals.)	60	60	60	60	60	60	60	60	60	60	90	60	60	90	90	90	90	90	60	90	90
Demand Water Sys. w/ 12 V. Pump (Apprx. Gals.)	30	30	30	30	30	30	30	30	30	30	30	30	30	30	30	30	30	30	30	30	30
ELECTRICAL																					
Power Converter	45A	45A	45A	45A	45A	45A	45A	45A	45A	45A	45A	45A	45A	45A	45A	45A	45A	45A	45A	45A	45A
Ground Fault Interrupter
Power Cord w/Hatch
EXTERIOR																					
Tandem Axle w/4 Wheel Electric Brakes
Skyline Roof Vents (#)	3	3	3	3	3	4	4	4	5	5	5	5	5	5	3	3	3	3	3	3	5
Rear Bumper w/Sewer Hose Carrier
Tinted Radius Torque Windows
Retractable Entry Step	DBL	DBL	DBL	DBL	DBL	DBL	DBL	DBL	DBL	DBL	DBL	DBL	DBL	DBL	TPL	DBL	DBL	TPL	TPL	TPL	TPL
Wheel Skirts
Awning Rail
DIMENSIONS																					
Radial Tire-Size	ST205 75R15	ST205 75R15	ST205 75R15	ST205 75R15	ST205 75R15	ST205 75R15	ST225 75R15	ST225 75R15	ST225 75R15	ST225 75R15	ST225 75R15	ST225 75R15	ST225 75R15	ST225 75R15	ST225 75R15	ST225 75R15	ST225 75R15	ST225 75R15	ST225 75R15	ST225 75R15	ST225 75R15
Tire Load Range	C	C	C	C	C	C	C	C	C	C	C	C	C	C	D	C	C	D	D	D	D
Gross Dry Weight	4015	4715	4855	5115	5520	5155	5535	5855	5675	6015	6520	6355	6315	6960	6860	5780	6400	7640	7260	7800	7060
Hitch Dry Weight	780	900	780	820	840	740	1080	1320	1300	1260	1300	1300	1280	1360	1060	880	840	1300	1360	1300	640
Axle Dry Weight	3235	3815	4075	4295	4680	4415	4455	4535	4375	4755	5200	5055	5035	5600	5800	4900	5560	6340	5900	6500	6420
Gross Vehicle Wt. Rating	7000	7000	7000	7000	7000	7000	7000	7000	7000	7000	7000	7000	7000	7000	7000	7000	7000	8800	8800	8800	8800
Width	8'0"	8'0"	8'0"	8'0"	8'0"	8'0"	8'0"	8'0"	8'0"	8'0"	8'0"	8'0"	8'0"	8'0"	8'0"	8'0"	8'0"	8'0"	8'0"	8'0"	8'0"
Length	22'11"	24'11"	26'11"	26'11"	26'11"	28'11"	28'11"	30'11"	30'11"	32'11"	32'11"	35'11"	35'11"	35'11"	27'11"	27'11"	27'11"	30'11"	30'11"	33'11"	35'11"

Product information included herein is as accurate as possible at the time of printing. Subsequent refinements may be evident in the actual product. Specifications are subject to change without notice. All liquid capacities are approximate and dimensions are nominal.



CHECK IT OUT *BEFORE* YOU BUY...

Shop and Compare...

Only **DUTCHMEN** offers all these features as *standard*!*

- | | |
|--|--|
| <input type="checkbox"/> Truss Roof Rafters | <input type="checkbox"/> LP Bottle Cover |
| <input type="checkbox"/> Radius Entry Doors | <input type="checkbox"/> Rear Stone Guard (where applicable) |
| <input type="checkbox"/> Ceiling Ducted Air (except 18' and 20') | <input type="checkbox"/> Front Stone Guard |
| <input type="checkbox"/> Summer In-Floor Air Circulation | <input type="checkbox"/> Smoke Detector |
| <input type="checkbox"/> Electric/Gas Water Heater (Electric Ignition) | <input type="checkbox"/> Oak Sink Cover |
| <input type="checkbox"/> Large Double Door Refrigerator | <input type="checkbox"/> TV Shelf & Outlet in Bedroom |
| <input type="checkbox"/> Awning (color coordinated) | <input type="checkbox"/> 30# Gas Bottles w/Auto Switch |
| <input type="checkbox"/> Large 1.2 cu. ft. Microwave Oven | <input type="checkbox"/> Queen Bed (where applicable) |
| <input type="checkbox"/> Double Steps | <input type="checkbox"/> Bed Lifts for Storage (Island Bed) |
| <input type="checkbox"/> 13,500 BTU Roof Air Conditioner | <input type="checkbox"/> Bedspread |
| <input type="checkbox"/> Monitor Panel | <input type="checkbox"/> Power Roof Vent in Bath |
| <input type="checkbox"/> TV Antenna with Booster | <input type="checkbox"/> Porch Light |
| <input type="checkbox"/> Bath Tub Wall Surround | <input type="checkbox"/> Bottle Cover Light (Trailers) |
| <input type="checkbox"/> AM/FM Cassette Stereo | <input type="checkbox"/> Oversized Radial Tires |
| <input type="checkbox"/> 45 AMP Converter | <input type="checkbox"/> Knife Holder |
| <input type="checkbox"/> Cable TV Hook-Up | <input type="checkbox"/> Residential Size Kitchen Sink |
| <input type="checkbox"/> Large Jalousie (Awning) Windows | <input type="checkbox"/> Velvet Upgrade Fabrics |
| <input type="checkbox"/> Safety Glass Picture Windows | <input type="checkbox"/> Oversized Oven 12" x 16" |
| <input type="checkbox"/> Water Heater By-Pass Kit | <input type="checkbox"/> Mini Blinds |
| <input type="checkbox"/> Swivel Rocker (where shown) (1) | |

* Some standard features may be omitted at dealer request.

ROYAL STANDARD FEATURES

- | | | |
|--|---|---|
| <input type="checkbox"/> All Features Listed Above | <input type="checkbox"/> Fiberglass Front & Rear Caps | <input type="checkbox"/> Radius Corners Top & Bottom |
| <input type="checkbox"/> Solid Oak Cabinet Doors | <input type="checkbox"/> Electric Front Jacks (FW) | <input type="checkbox"/> Comb. Range Hood & Monitor Panel |
| <input type="checkbox"/> Chrome Bumper Cover | | |

CONSTRUCTION FEATURES

- No putty tape – We use butyl rubber, silicon caulk and imported foam tape.
- Ducted air run in a 5" truss roof (except 18' and 20')
- Solid one-piece aluminum roof, backed with insulation board.
- Unit is full 8' wide.
- Heavy-duty box tube frame with 5" to 6" wide supporting outriggers.
- Walls, roof and floor framing is all minimum of 16" on center.
- Bottom exterior metal attached with screws instead of staples.
- Stress seams installed above entry doors.
- 5/8" exterior grade tongue and groove plywood floor.
- In-floor heat ducting.
- Solid oak frame cabinet doors (Classic).
- Wood ceiling trim, no plastic gimp.
- Cabinets fit flush to ceiling.

See your Dutchmen dealer for all the details:



Dutchmen

DUTCHMEN MFG., INC.

305 STEURY AVE. • GOSHEN, IN 46526 • 219-534-1224

At Dutchmen we constantly improve our product; as a result all specifications and dimensions are subject to change without notice.

THOR
AMERICA'S BEST RV VALUE