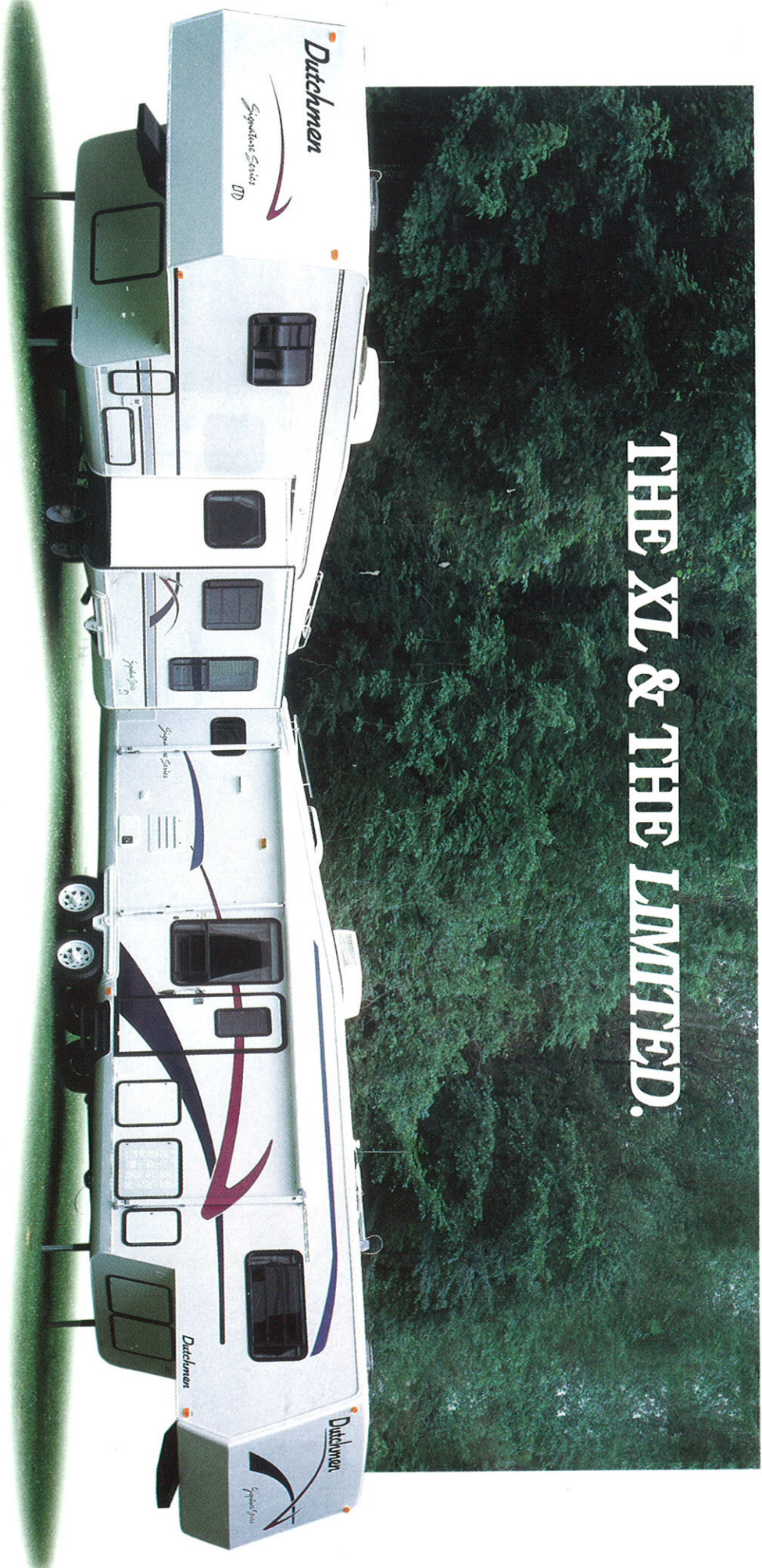


1995

At last, you're on your way...

THE XL & THE LIMITED.



Dutchmen *Signature Series*





Value Plus — That's the Dutchmen guarantee. With the Dutchmen Signature Series XL or Limited you get more value for your dollar. Why? It's simple. Dutchmen is one of the largest manufacturers of quality Fifth Wheels and Travel Trailers in the country. Because of our size, our production

costs are low. That means we can pass our savings on to you. That's not all. Our Signature Series combines innovative designs and the latest technology to give you a Fifth Wheel which is lighter in weight, comfortable, and built to last. At Dutchmen, we want to make your traveling experience a memorable one.



There Is A Big Difference In The *Signature Series*

Signature models are built right. They have fully laminated walls and floors as well as a long list of standard features that you won't find in similar models costing \$10,000 or more. Not only that, every Signature model offers an Extra Large Power Slide-out Room for added luxury.

Just look at some of our unique features:

- Smooth Fiberglass Exteriors
- Aluminum Framed Side Walls
- Steel Framed Floors
- Solid Block Foam Insulation in Walls and Floor
- 5" Trussed Roof Rafter
- Dura Shell Roof Covering (Tougher Than Rubber)
- One Piece Galvanized Steel Underbelly





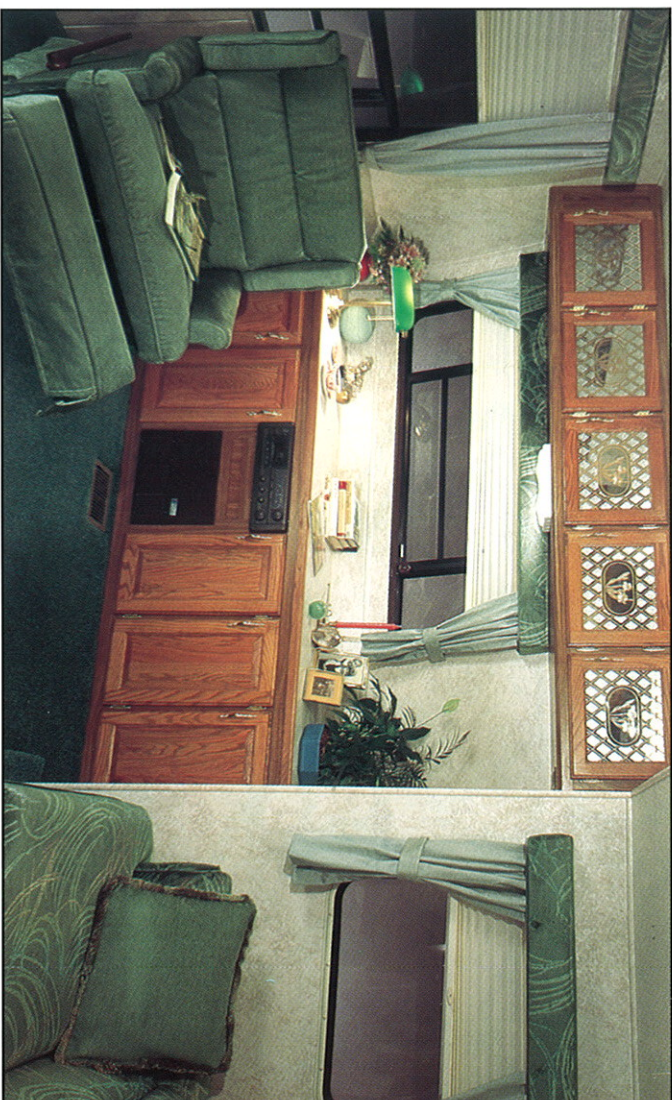
You Can Have It All.

When you take to the road in one of our Signature Series Fifth Wheels you can relax and leave the headaches and hassles behind. That's because every one of our models is specially designed with your comfort in mind.

Just one look at Dutchmen and you'll agree. You can still have it all when you get away from it all. That's Dutchmen Value Plus. Check out these conveniences:

- Deluxe A&E Awning
- Large Microwave and Double Door Refrigerator
- Fiberglass Shower with Glass Shower Doors
- Gas/Electric Water Heater with Electric Ignition
- Solid Raised Oak Cabinet Doors
- 13.5 BTU Roof Air Conditioner
- Luggage Rack and Ladder

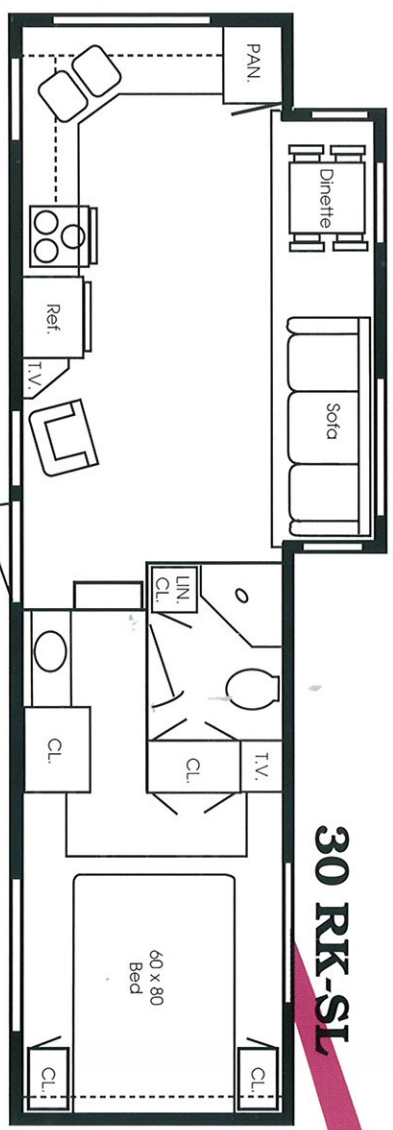
The Signature Series is designed to meet all your entertainment needs. Standard features include AM/FM Cassette Stereo, TV Antenna with booster, Cable TV Hookup with an extra TV jack in the bedroom.



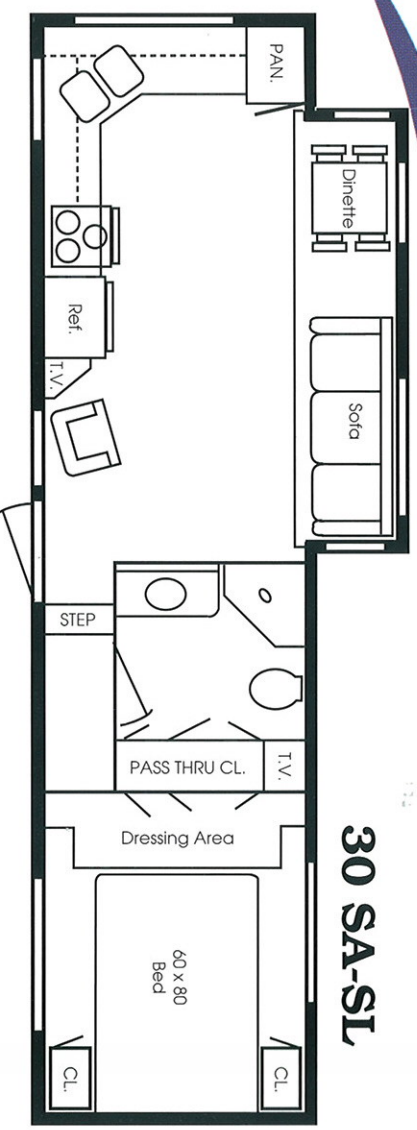
Signature Series

Carpeted Ceilings

Deluxe Day/Night Shades

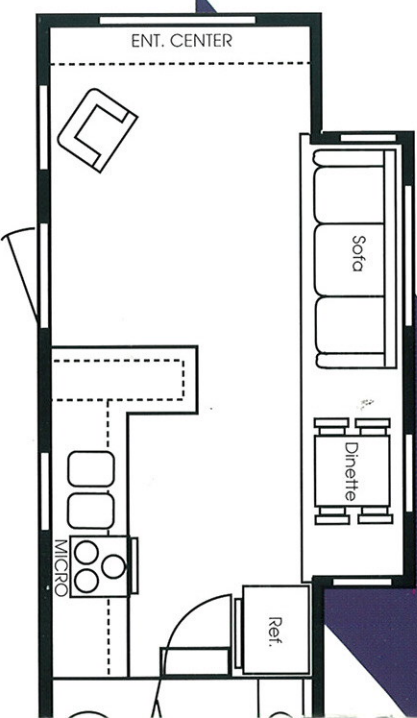
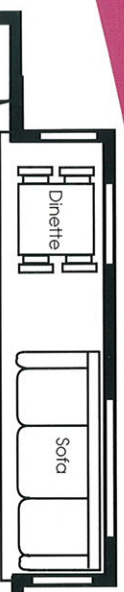
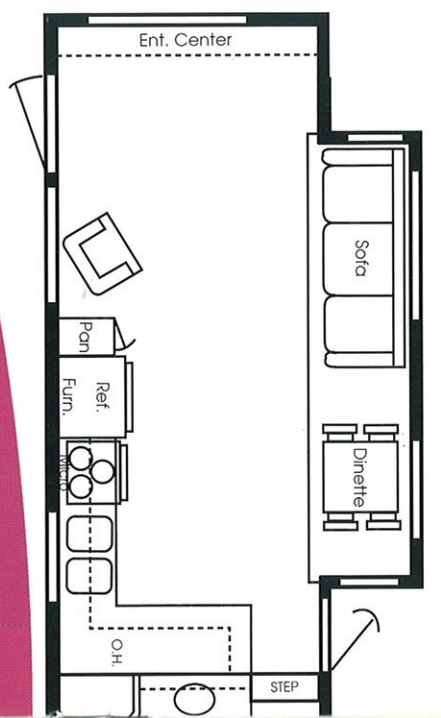


30 RK-SL



30 SA-SL

Heated Holding Tanks

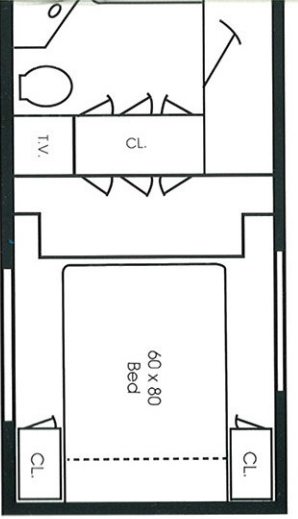


30 RK-SL

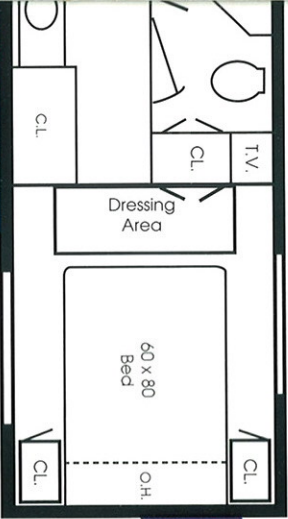


30 SA-SL

33 RLRD-SL



33 RK-SL

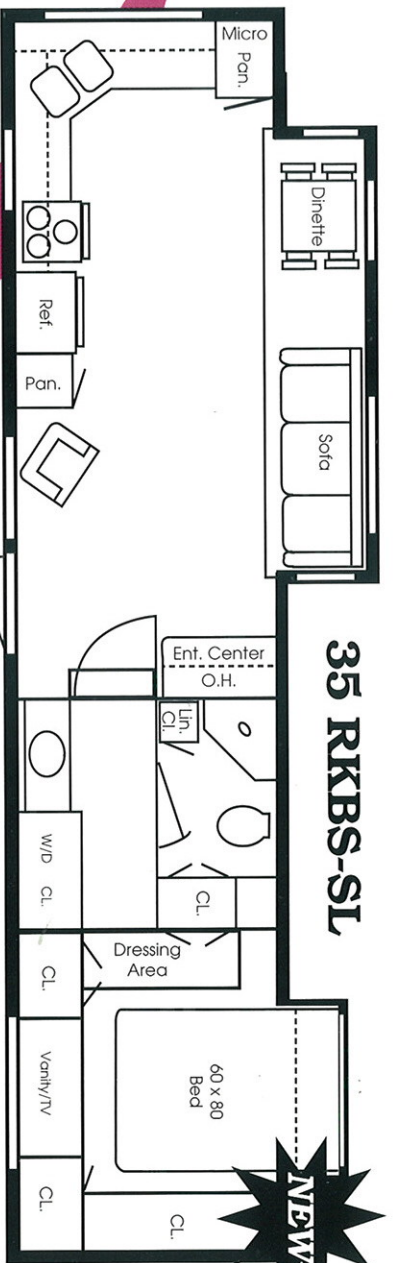


33 RL-SL



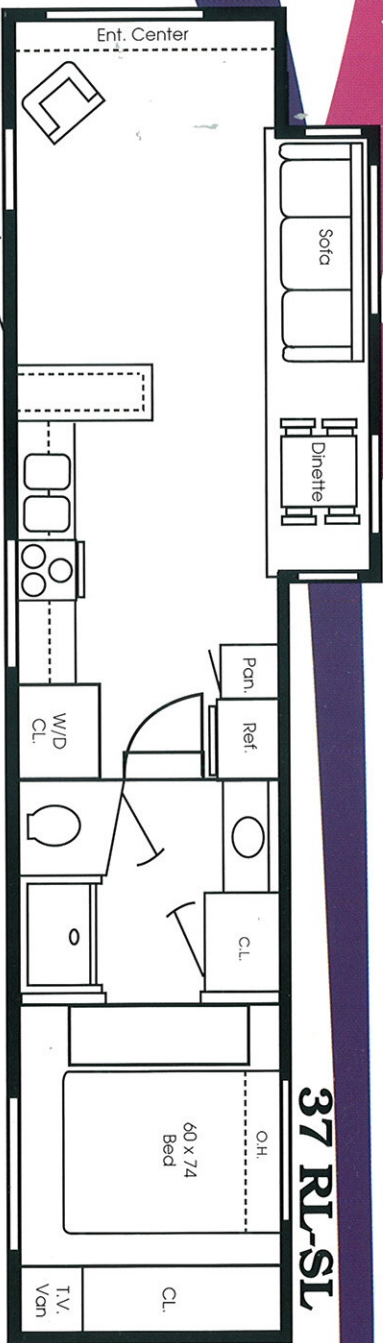
*Washer/Dryer
Hookups
Some Models*

35 RKBS-SL

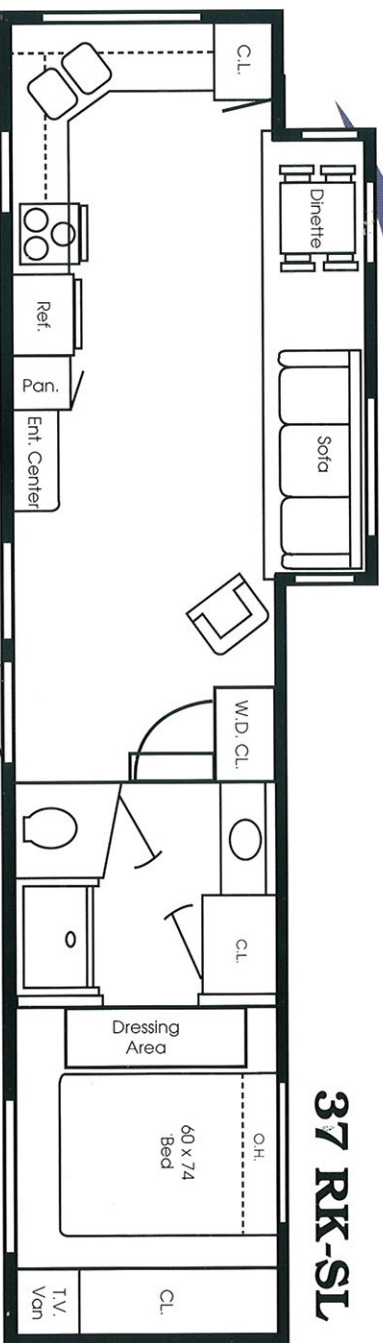


*Front & Rear
Fiberglass Caps*

37 RL-SL



37 RK-SL





A. Erin Green.



B. Cameo.



D. Ivory Rose.



Go With Dutchmen.

- **Quality Construction** — All Dutchmen Fifth Wheels are constructed using the finest materials and the latest technology so you'll enjoy many years of traveling enjoyment.
- **Built For Comfort** — Each model comes fully loaded with a long list of standard features to make your Fifth Wheel a real home away from home.
- **Right on the Money** — Feature for feature, dollar for dollar, you're simply not going to find a better value than the Signature Series from Dutchmen.

Go With The Leader.

When it comes to quality, comfort, and value, nobody beats Dutchmen. Choose the leader. Choose Dutchmen Value Plus.



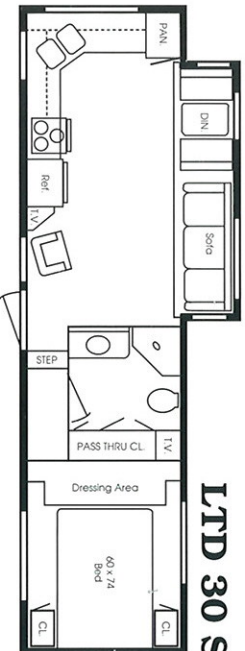
Dutchmen *Signature Series* THE LIMITED.



LTD 27 RK-LE



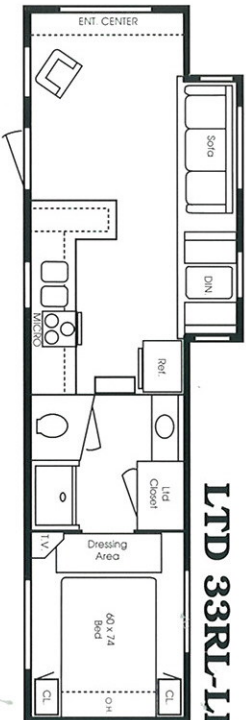
LTD 27 RK-NS



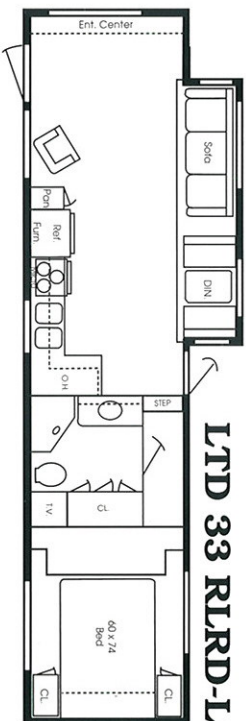
LTD 30 SA-LE



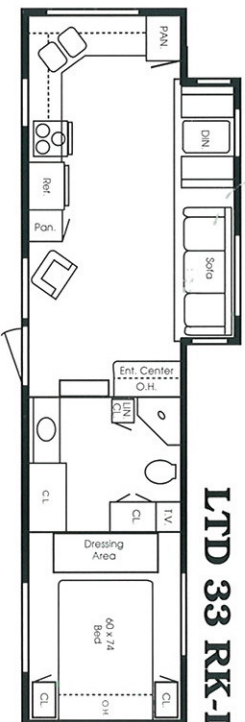
LTD 30 RK-LE



LTD 33RL-LE



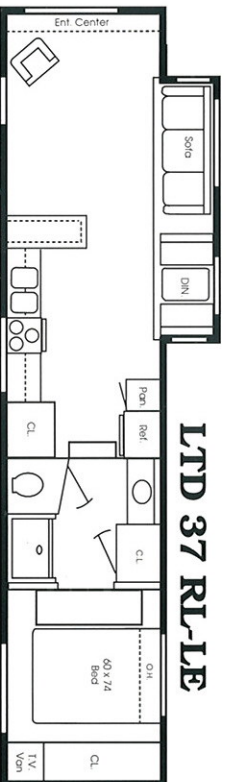
LTD 33 RLKD-LE



LTD 33 RK-LE



LTD 37 RK-LE



LTD 37 RL-LE

Dutchmen

Signature Series



Signature Limited & XL Standard Features

Construction Features

- ☐ Smooth fiberglass exterior
- ☐ Aluminum framed fully laminated side wall
- ☐ Steel framed fully laminated floor and floor
- ☐ Block foam insulation, walls
- ☐ 5" truss rafters with 3/8" decking full length
- ☐ Dura shell roof covering (tougher than rubber)
- ☐ Track guided, hydraulic powered slide room
- ☐ Carpeted and lighted storage compartments
- ☐ Solid oak cabinet doors
- ☐ Oak edged counter tops
- ☐ 1-3/8" residential interior doors
- ☐ All lights wall switched
- ☐ 110 volt outlet in slide room
- ☐ Tinted Radius Torque Windows
- ☐ Ground Fault Interrupter

Equipment Standard Features

- ☐ Deluxe awning
- ☐ Ceiling ducted, 13.5 BTU air conditioner
- ☐ Large 1.2 cu. ft. microwave
- ☐ 6 gallon gas/electric/electric ignition hot water heater
- ☐ Fiberglass shower with glass shower door
- ☐ Unique furnace powered air circulation system
- ☐ Roof luggage rack and ladder
- ☐ Large double door refrigerator
- ☐ Stereo/cassette with four speakers
- ☐ TV antenna with booster
- ☐ Second outlet with stand in bedroom
- ☐ Cable TV hookup
- ☐ 45 amp converter with charger
- ☐ Mini blinds (limited)
- ☐ Water heater bypass
- ☐ 3-Burner Range/Oven

COMFORT/ACCOMMODATIONS	27RK-LE	27RK-NS	30RK-SL/LE	30SA-SL/LE	33RK-SL/LE	33RL-SL/LE	33RLD-SL/LE	37RK-SL/LE	37RL-SL/LE
Sleeping Area	4	4	4	4	4	4	4	4	4
Marine Toilet	•	•	•	•	•	•	•	•	•
HEATING									
Furnace w/12V Fan and Thermostat (BTUs)	35M	35M	35M	35M	35M	35M	35M	35M	35M
SELF CONTAINMENT									
Dual LP Tanks w/Regulator 30# and Changeover Tanks	7	7	7	7	7	7	7	7	7
Waste Water Holding Tanks (approx. gals.)	90	90	90	90	90	90	90	90	90
Demand Water System w/12V Pump (approx. gals.)	52	52	XL/LTD 56/52	XL/LTD 56/52	XL/LTD 56/52	XL/LTD 56/52	XL/LTD 56/52	XL/LTD 56/52	XL/LTD 56/52
ELECTRICAL									
Power Converter	45A	45A	45A	45A	45A	45A	45A	45A	45A
EXTERIOR									
Tandem Axle w/4 Wheel Electric Brakes	•	•	•	•	•	•	•	•	•
Skyline Roof Vents (#)	3	3	3	3	3	3	3	3	3
Retractable Entry Step Triple	•	•	•	•	•	•	•	•	•
DIMENSIONS									
Radial	ST225	ST225	ST225	ST225	ST225	ST225	ST225	ST225	ST225
Tire-Size	75R15	75R15	75R15	75R15	75R15	75R15	75R15	75R15	75R15
Tire Load Range	D	D	D	D	D	D	D	D	D
Gross Dry Weight	7200	6800	7740	7740	8680	8580	9160	9900	9840
Hitch Dry Weight	1040	1000	1550	1550	1500	1590	1560	1380	1660
Axle Dry Weight	6160	5800	6190	6190	7180	6990	7600	8520	8180
Gross Vehicle Weight Rating	8800	8800	10400	10400	10400	10400	10400	15600	15600
Length	27' 11"	27' 11"	30' 11"	30' 11"	34' 1"	34' 1"	34' 1"	38' 1"	38' 1"

At Dutchmen we constantly improve our product: as a result all specifications, dimensions and features in this brochure were as accurate as possible at the time of publication. Selected decor items shown in the photographs are not part of the product unless specified differently.

DEALER:

Signature XL Upgrade Features

Construction Upgrades

- High gloss smooth fiberglass exterior
- Fiberglass caps front and rear
- Double roof insulation

Equipment Upgrades

- Hide-a-bed sofa
- Under coach spare tire carrier
- Electric front jacks
- 50 gallon water tank
- Washer & dryer hookup (specified floorplans)
- Deluxe foot flush toilet
- Large tinted skylight over shower
- 15M BTU air, 33" & up

Decor Upgrades

- Deluxe day/night shades
- Carpeted ceiling
- Extra bold exterior graphics package
- Fluorescent kitchen lights
- Solid oak dinette table & two chairs
- Raised oak refrigerator front
- Lighted entry grab handle



DUTCHMEN MFG., INC. 305 STEURY AVE. GOSHEN, IN 46526



THEOR
AMERICA'S BEST RV VALUE