

# PARK AVENUE

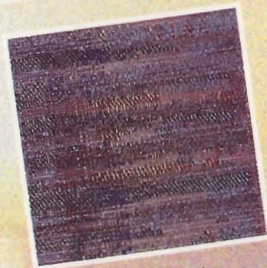


5th Wheel Floor Plans & Specs.





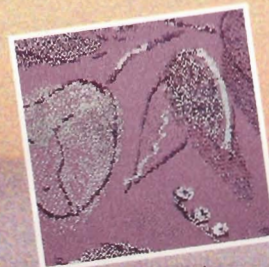
Plum Textured



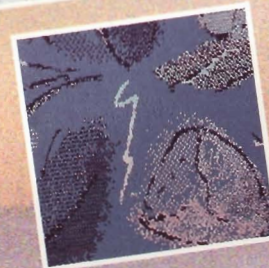
BlueTextured



Teal Textured



Plum Velvet



Blue Velvet

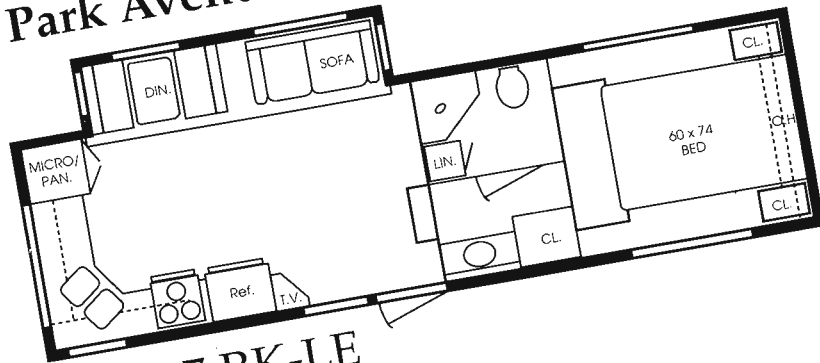


Teal Velvet



# Park Avenue Floor Plans

Park Avenue



LTD 27 RK-LE

Park Avenue



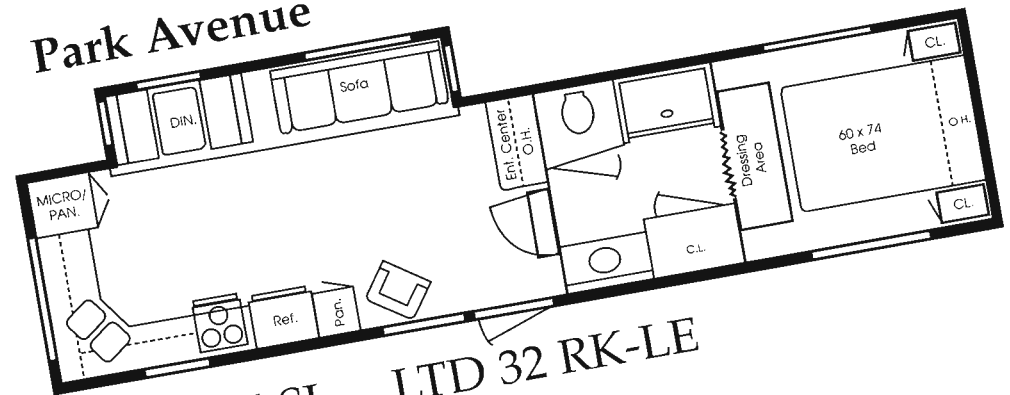
XL 30 RK-SL LTD 30 RK-LE

Park Avenue



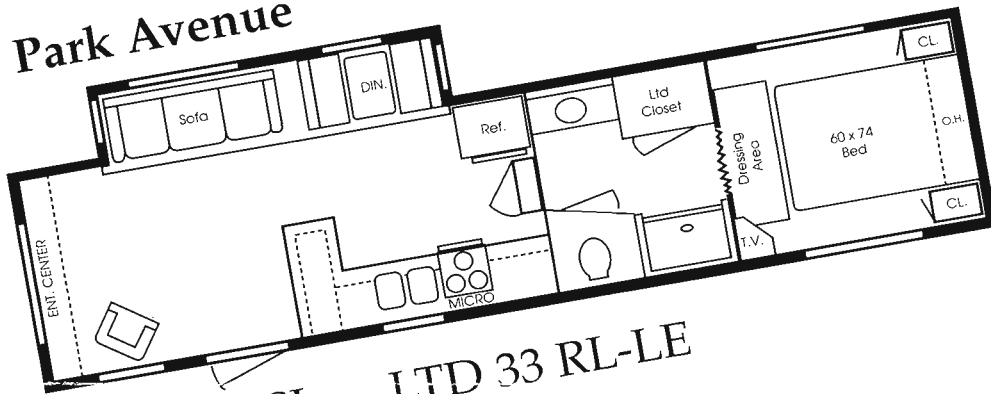
XL 30 SA-SL LTD 30 SA-LE

Park Avenue



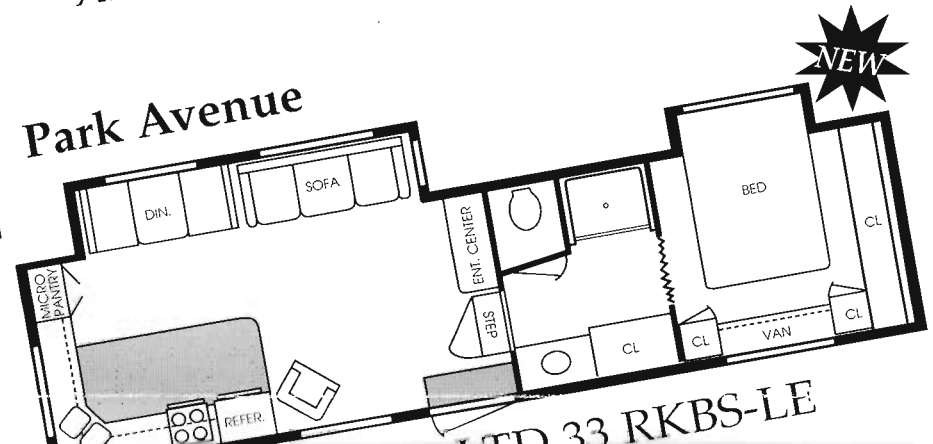
XL 32 RK-SL LTD 32 RK-LE

Park Avenue



LTD 33 RL-SL LTD 33 RL-LE

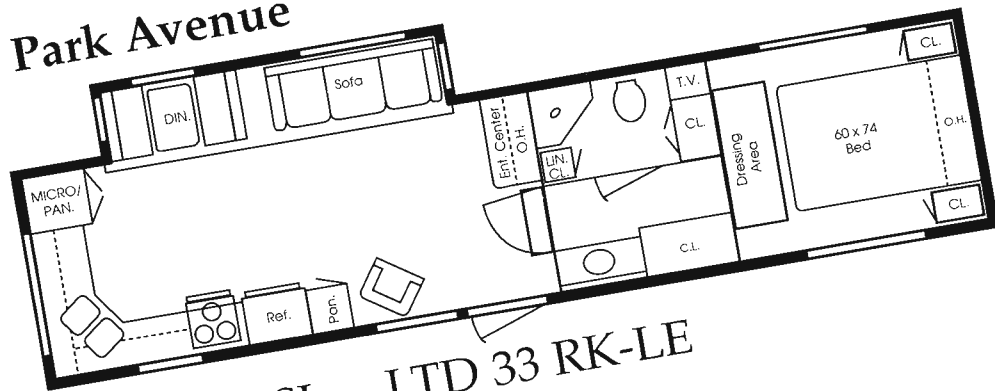
Park Avenue



LTD 33 RKBS-LE

XL 33 RL-SL

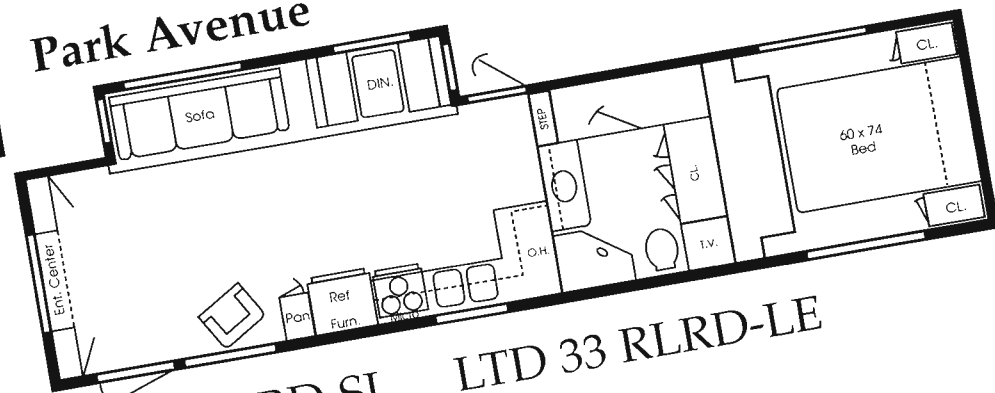
Park Avenue



XL 33 RKBS-SL

LTD 33 RKBS-LE

Park Avenue



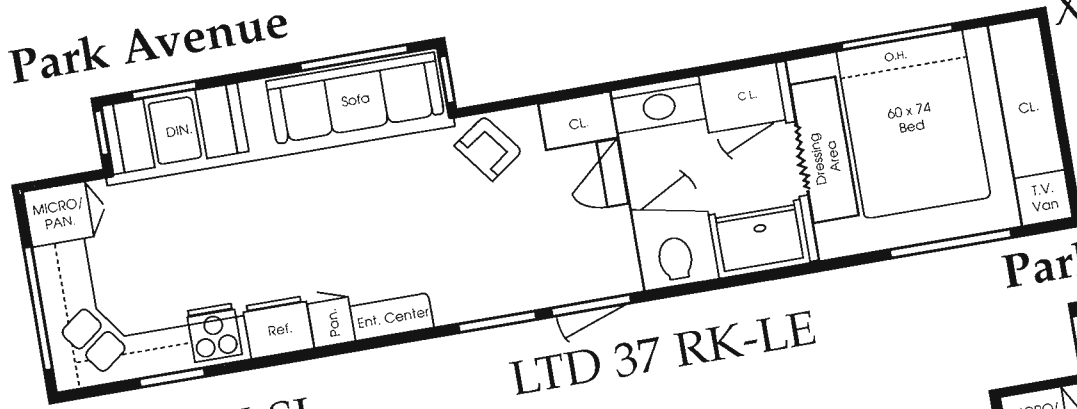
XL 33 RK-SL

LTD 33 RK-LE

XL 33 RLRD-SL

LTD 33 RLRD-LE

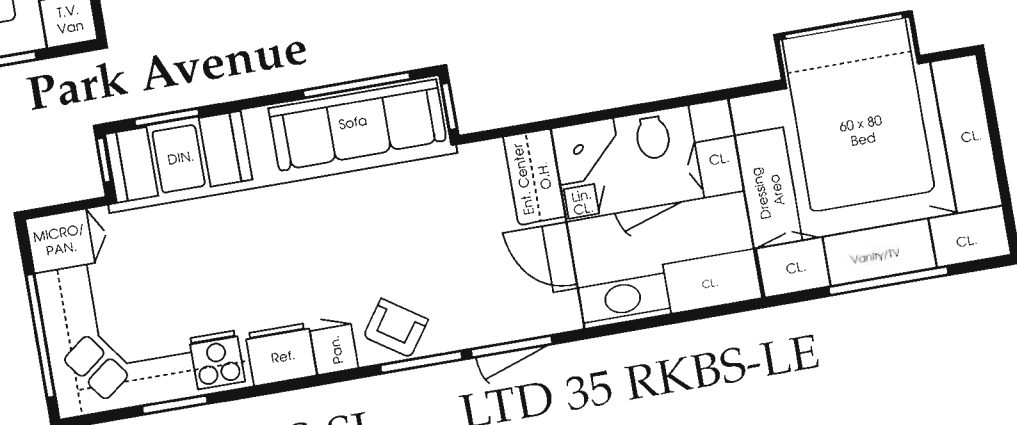
Park Avenue



XL 37 RK-SL

LTD 37 RK-LE

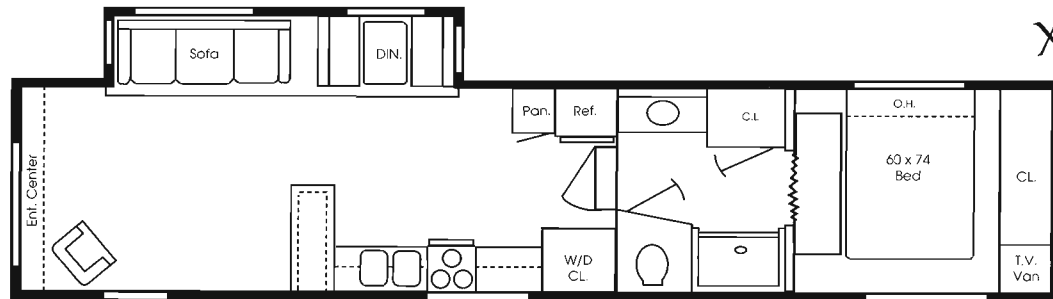
Park Avenue



XL 35 RKBS-SL

LTD 35 RKBS-LE

Park Avenue



XL 37 RL-SL

LTD 37 RL-LE

# Park Avenue Specifications

Comfort/ Accommodations	27 RK	30 RK	30 SA	32 RK	33 RK	33 RL	33 RKBS	33 RLRD	35 RKBS	37 RK	37 RL
SLEEPING AREA MARINE TOILET	4	4	4	4	4	4	4	4	4	4	4
FURNACE W/12 VOLT FAN & THERMOSTAT/BTU	•	•	•	•	•	•	•	•	•	•	•
DUAL LP TANKS W/REGULATOR 30# & CHANGEOVER (GALS)	7	7	7	7	7	7	7	7	7	7	7
WASTE WATER HOLDING TANKS (APPROX GALS)	90	90	90	90	90	90	90	90	90	90	90
DEMAND WATER SYSTEM W/12V PUMP (APPROX GALS)	56	56	56	56	56	56	56	56	56	56	56
TANDEM AXLE W/4 WHEEL ELECTRIC BRAKES	•	•	•	•	•	•	•	•	•	•	•
SKYLINE ROOF VENTS (#)	2	2	3	3	3	3	3	3	3	3	3
RETRACTABLE ENTRY STEP TRIPLE	•	•	•	•	•	•	•	•	•	•	•
<b>DIMENSIONS</b>											
RADIAL TIRE SIZE	ST225 75R15	ST225 75R15	ST225 75R15	ST225 75R15	ST225 75R15	ST225 75R15	ST225 75R15	ST225 75R15	ST225 75R15	ST225 75R15	ST225 75R15
TIRE LOAD RANGE	D	D	D	D	D	D	D	D	D	D	D
GROSS DRY WEIGHT	7200	7740	7740	N/A	8680	8580	9620	9160	9620	9900	9840
HITCH DRY WEIGHT	1040	1550	1550	N/A	1500	1590	1880	1560	1880	1380	1660
AXLE DRY WEIGHT	6160	6190	6190	N/A	7180	6990	7740	7600	7740	8520	8180
GROSS VEHICLE WEIGHT RATING	8800	10400	10400	10400	10400	10400	10400	10400	10400	15600	15600
LENGTH	27'11"	30'11"	30'11"	N/A	34'1"	34'1"	34'1"	34'1"	36'1"	38'1"	38'1"



# Check it out & Check it off...

## Park Avenue Standard Features

### Park Avenue & Deluxe Standard Features

#### Construction Features

- ☐ Smooth Fiberglass Exterior
- ☐ Aluminum Framed Fully Laminated Side Wall
- ☐ Steel Framed Fully Laminated Floor
- ☐ Block Foam Insulation, Walls and Floor
- ☐ 5" Truss Rafters with 3/8" Decking Full Length
- ☐ Extra Tough Rubber Roof
- ☐ Track Guided, Hydraulic Powered Slide Room
- ☐ Carpeted and Lighted Storage Compartments
- ☐ Solid Oak Cabinet Doors
- ☐ Oak Edged Counter Tops
- ☐ 1-3/8" Residential Interior Doors
- ☐ All Lights Wall Switched
- ☐ 110 Volt Outlet in Slide Room
- ☐ Tinted Radius Torque Windows
- ☐ Ground Fault Interrupter

#### Equipment Standard Features

- ☐ Deluxe Awning
- ☐ Ceiling Ducted, 13.5 BTU Air Conditioner
- ☐ Microwave
- ☐ 6 Gallon Gas/Electric/Electric Ignition Hot Water Heater
- ☐ Fiberglass Shower with Glass Shower Door
- ☐ Swivel Rocker (Limited)
- ☐ Roof Luggage Rack and Ladder
- ☐ Large Double Door Refrigerator with Black Glass Front
- ☐ Stereo/Cassette with Four Speakers
- ☐ TV Antenna with Booster
- ☐ Second Outlet with Stand in Bedroom
- ☐ Cable TV Hookup
- ☐ 45 Amp Converter with Charger
- ☐ Mini Blinds (Limited)
- ☐ Water Heater Bypass
- ☐ 3 Burner Range/Oven
- ☐ Combination Range Exhaust and Monitor Panel
- ☐ Raised Oak Cabinet Doors
- ☐ Free Standing Sofa
- ☐ Carpeted Storage Compartment

### Park Avenue Deluxe Upgrade Features

#### Construction Upgrades

- Fiberglass Caps Front and Rear
- Double Roof Insulation
- Heated and Enclosed Holding Tanks
- Built-in Sewage Hose Storage

#### Decor Upgrades

- Deluxe Day/Night Shades
- Carpeted Ceiling
- Extra Bold Exterior Graphics Package
- Solid Oak Dinette Table & Two Chairs
- Raised oak Refrigerator Front
- Recliner IPO Swivel
- Hide-A-Bed Sofa

#### Equipment Upgrades

- Under Coach Spare Tire Carrier
- Electric Front Jacks
- 50 Gallon Water Tank
- Washer & Dryer Hookup (Specified Floorplans. Not available in the State of Washington.)
- Large Tinted Skylight over Shower
- 15M BTU Air, 33" & Up

We constantly improve our product: as a result all specifications, dimensions and features in this brochure were as accurate as possible at the time of publication. Selected decor items shown in the photographs are not part of the product unless specified differently.

