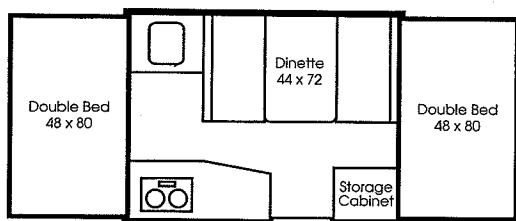


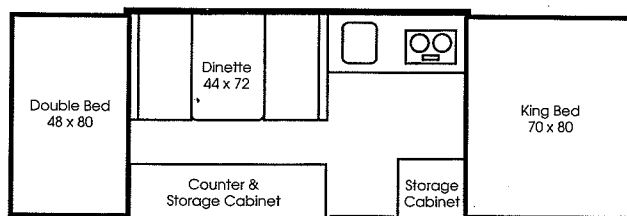
# FLOOR PLANS

1996 Skamper

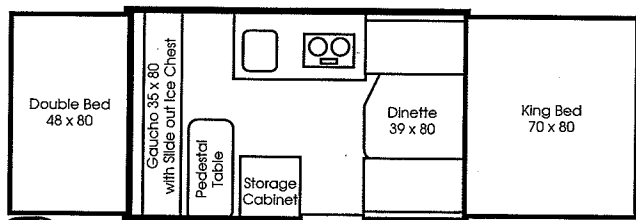
**17A**



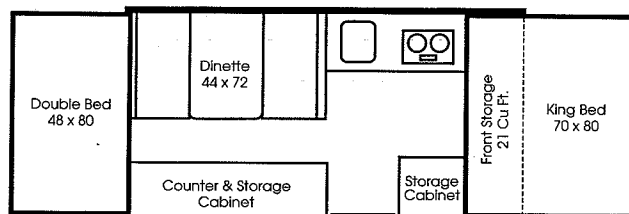
**21A**



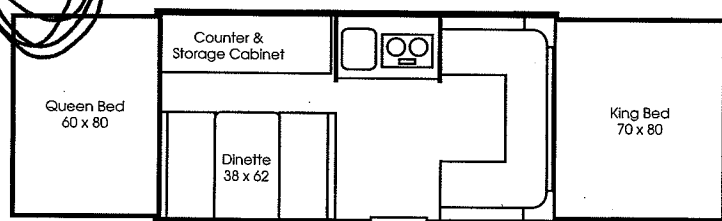
**21B**



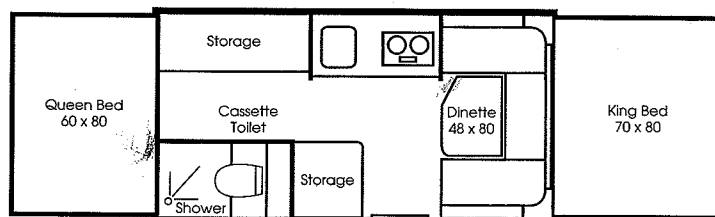
**21D**



**23L**



**23S**



## SPECIFICATIONS

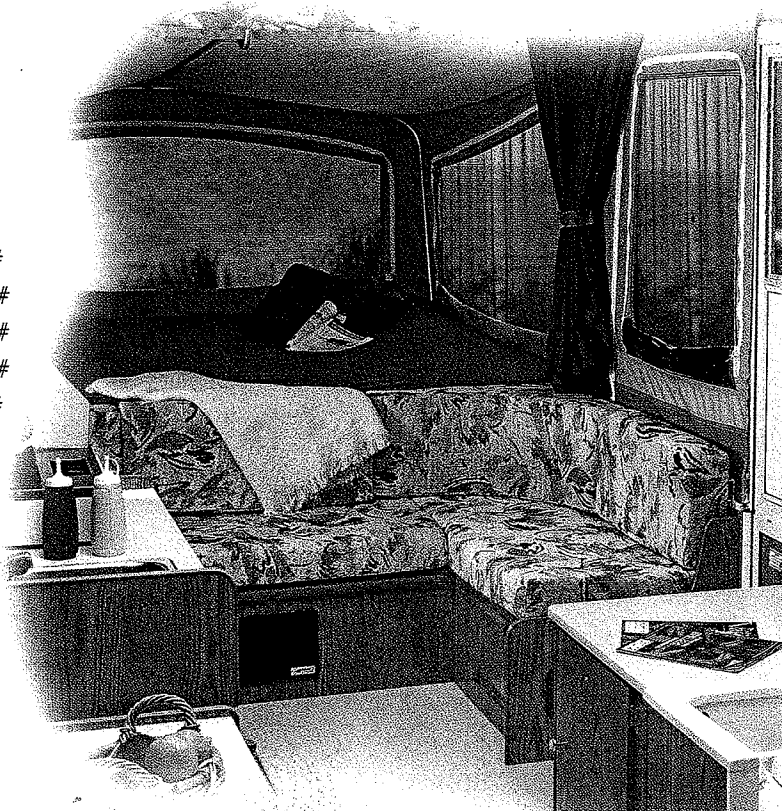
	17A	21A	21B	21D	23L	23S
Open Length	17'	21'	21'	21'	24'	24'
Interior Width	6'8"	6'8"	6'8"	6'8"	6'8"	6'8"
Interior Height Open	6'7"	6'7"	6'7"	6'7"	6'7"	6'7"
Travel Height	4'4"	4'4"	4'4"	4'4"	4'4"	4'6"
Trailer Length Closed	12'6"	14'	14'	14'	16'	16'
Hitch Weight*	120#	220#	200#	120#	180#	220#
Axle Weight*	1260#	1379#	1380#	1599#	1636#	1759#
Total Dry Weight*	1380#	1599#	1580#	1719#	1816#	1979#
GVWR	2210#	2310#	2290#	2210#	2270#	2720#
Carrying Capacity*	830#	711#	710#	491#	454#	741#

\*All weights approximate

## GENERAL WARRANTY INFORMATION

- General Camper Coverage 5 yrs.\*  
(Except Tires & Appliances)
- Tent Fabric 5 yrs.\*
- Floor 10 yrs.\*
- Fiberglass Skin 10 yrs.\*
- Roof Lifter System Lifetime\*

\*Refer to specific written warranty statement



NOTE: Since we constantly strive to improve our products, all specifications and dimensions are subject to change without notice.

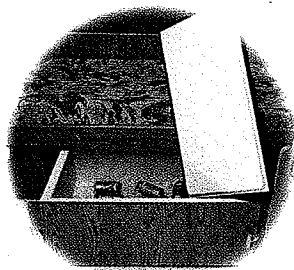
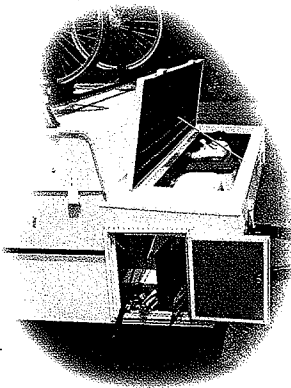
## STRUCTURAL

- 4" tubular steel frame (3" on 8')
- Vacuum-bonded aluminum skinned roof with foam core - tapered
- Fiberglass, vacuum-bonded, front, rear and sidewalls
- Single cable lift system, exterior mounted, enclosed
- Grease fittings for lift system
- One piece seamless floor w/undercoating
- Wide Track Leaf spring suspension system
- Wide Track Torsion Axle (23S only)
- Polyethylene wheel wells
- 2 stabilizer jacks (23S has 4)

## INTERIOR

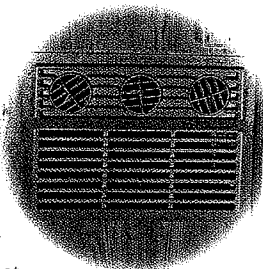
- 4" reversible cushions
- Solid cabinet doors w/friction catches
- Inside-outside dinette table
- 12 volt ceiling light(s)
- Laminated counter tops
- 5/8" plywood bunk ends w/roller tracks
- Porta-potti storage, most models
- Seamless and no wax vinyl flooring
- Stainless steel sink
- Suede backed window drapes w/tiebacks & valance
- Privacy curtains for bunks
- Clothes bar

Great for storing larger items.



Self-draining ice chest.

The Cool-Cat heat pump by Dometic both warms and cools. By choosing this option you can take the weight of the A/C off the roof and into a cabinet.



## EXTERIOR

- Front jack with dolly wheel
- 14" x 14" roof vent
- Self-storing step
- Awning
- Patio light
- Battery wiring
- Outside receptacle
- Spare tire, carrier and cover
- LP bottle cover
- Eleven clearance lights
- Tinted windows
- Lifter arm covers
- Sectionalized 15 oz. vinyl tent fabric
- 12" tires
- 13" tires on 23S

## APPLIANCES/SYSTEM

- 110 volt receptacles
- A/C wiring circuit
- Indoor/outdoor range
- 10 gallon built-in water tank (23S has 13 gal.)
- Two-way water pump
- 12 volt water pump (23S only)
- Brass city water hook-up
- 20# LP tank
- 12 amp power converter (20 amp 23S only)
- Battery/bottle rack
- A/C - Snowload bars
- Fire extinguisher
- 35# (60 quart) ice box
- 25', 30 amp power cord
- Range cover/storm shield
- 6 gallon gas water heater (23S only)
- Cassette toilet (23S only)
- Slide Out Ice Chest (21B only)

## OPTIONS

- Brakes, electric
- Furnace, 16,000 BTU
- Refrigerator
- Screen room
- Canadian standards
- Heat pump (21A, 21D, 23L, 23S)

**SWANDEE SWANPER**