

97



Signature Series

5th Wheel Floor Plans & Specs.

Signature LTD Everything you ever wanted in an RV!



When the Signature was first introduced, it took the RV world by storm with its combination of top-quality features and highest value. Its vacuum-bonded laminated sidewalls, floor, and end caps are fully reinforced with tubular aluminum framing for greater body strength with less weight. The fiberglass exterior skin, laminated onto a styrofoam substrate for strength and high insulation

value, will withstand the harshest treatment and weathering and still look good for years to come. Inside, Signature is loaded with the features you want. We start with better materials, include the finest components and appliances, and put them all together in a vehicle designed for maximum comfort, convenience, and versatility.

A solid oak raised-panel refrigerator door, standard on Signature XL, is available as an option on Signature LTD.





Most slideout bedrooms include a large storage wall with a spacious vanity, and all models 34' and above include a huge wardrobe, so you can travel with all the convenience of home.



A name brand 3-burner range with oven, residential-style microwave, powerful lighted range hood, lots of drawers and cupboards with solid oak raised panel doors, and luxurious oak-edged countertops are just a few of the features that will make meal preparation such a joy.



Signature XL Everything you ever wanted in a fifth wheel—

With all of the fantastic design, construction and livability features that make Signature LTD such a great value, Signature XL comes loaded with even more standard features. Fiberglass front and rear caps and a roof rack and ladder give Signature XL an even more distinctive look, while shock absorbers add to its durability and an electric front jack on the fifth wheel adds to your convenience.

Inside, we've given you day/night shades for complete privacy and light control, and bathroom make-up lights and fluorescent lights in the kitchen. And you'll find the rocker/recliner-/glider and free-standing dinette table add immensely to Signature XL's home-like atmosphere.

Signature XL—it takes Signature LTD to a new level. And that's really saying a lot.



AND MORE!



An entertainment center groups your stereo and television in a convenient location and makes viewing easy even from the dinette.



A 60" x 74" walk-around queen bed (or 60" x 80" queen in bedroom slideouts) with a quality innerspring mattress assures you of restful sleep night after night. And all bedrooms give you lots of storage space, so you can take along the clothing you'll need.



Even the bathrooms in a Signature XL give you truly extraordinary storage.

Never before have so many exciting new features been added to Signature LTD and Signature XL.

Exterior Features:

- White-frame tinted windows and white baggage doors provide a crisper, more stylish look.
- A single "super-size" front storage door gives improved access to storage.
- Easy to use triple entry steps means no more "mashed" fingers.
- Conveniently located spare tire carrier standard on the XL (optional in the Ltd.)
- Heavier gauge steel is used in the main frame and at the upper deck to give you the strength needed for years of camping enjoyment.
- Heavy smooth aluminum extrusions on slide-out rooms with triple seals keep your room leak and trouble free.
- Strong aluminum extrusions on the interior slide-out fascia and sides eliminates the possibility of roof sag.

Interior Features:

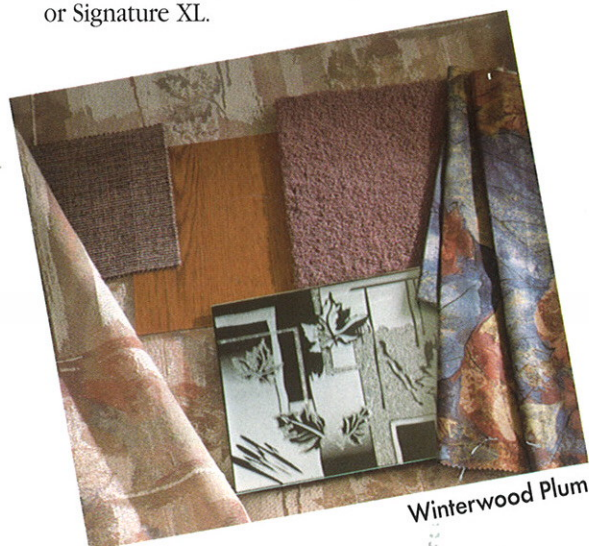
- Additional bedroom ceiling height without increasing overall height of the fifth wheel.
- Larger windows used in most areas to provide you with maximum visibility and ventilation.
- Washer/Dryer prep available in most models.
- Lower microwave height makes it easier and safer to use.
- Attractive 12 volt lighting in the dinette area on larger slides.
- 12 volt pin up lights are included by the sofa and in bedroom slides.
- Mastercraft Furniture including a Mastercraft Hide-A-Bed sofa is standard in all of our models.
- Heavy gauge reinforcing tube combined with double rollers on both ends of the slide room gives you smoother slide room operation.
- Laminated slide-out room including a steel framed fully laminated slide out floor offers durability for years to come.
- Slide-out electrical connector is supported by a scissor arm for smoother operation requiring less maintenance.
- The Electric Actuator powers the slide-out rooms creating additional storage with less machinery and parts.
- Manual in and out operation of slide out room.

Construction Features:

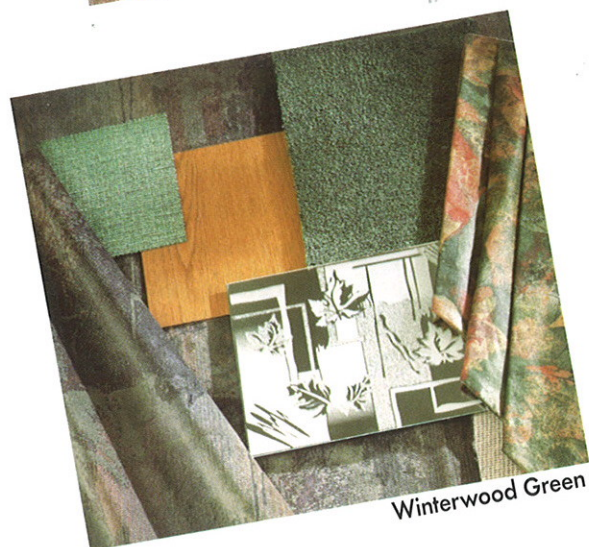
- Steel bottom pan in the front storage area provides easier maintenance and is more durable than wood.

Quality Mastercraft furniture is featured in all Signature LTD and Signature XL vehicles.

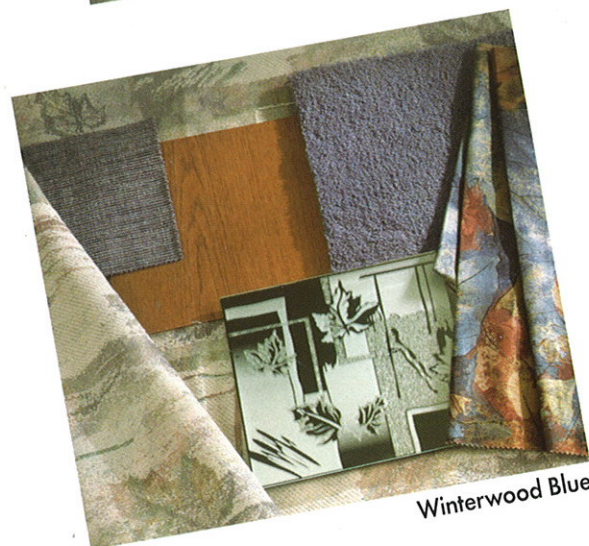
All furniture is upholstered in stylish high-grade fabrics, and the valences, trim, and residential-type carpet add even more to the home-like atmosphere of a Signature LTD or Signature XL.



Winterwood Plum



Winterwood Green



Winterwood Blue



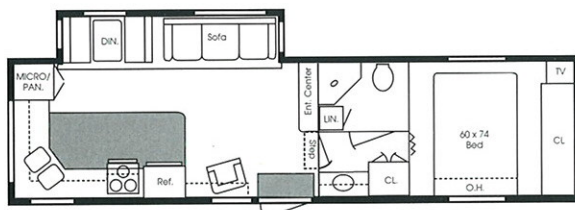


You'll love the great exterior storage features: all compartments are carpeted, lighted, and fitted with white-trimmed, locking, radius-corner doors. The built-in LPG bottle storage protects the bottles from damage while greatly enhancing the trailer's good looks in appropriate models.

1997 FLOORPLANS



28RK Signature XL & Signature LTD (Available with Opt 2 & 4)



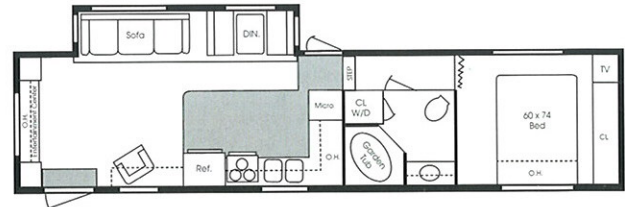
32RK Signature XL & Signature LTD (Available with Opt 2)



32SA Signature XL & Signature LTD (Available with Opt 3)



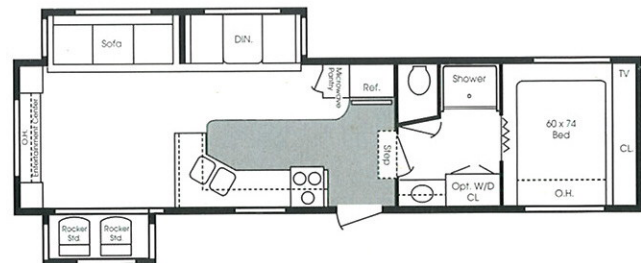
34RK Signature XL & Signature LTD (Available with Opt 1, 1B & 2)



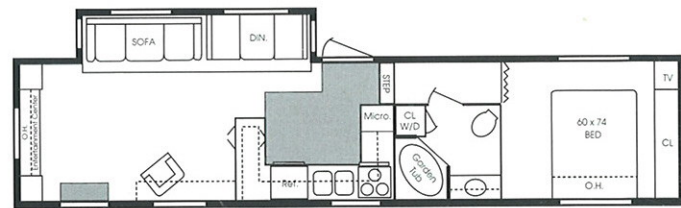
34RLRD Signature XL & Signature LTD (Available with Opt 2)



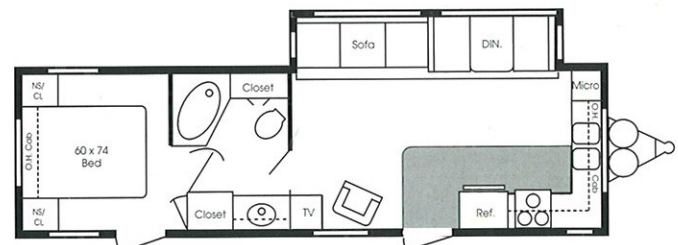
36RK Signature XL & Signature LTD (Available with Opt 1, 1B & 2)



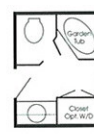
36RL Signature XL & Signature LTD (Available with Opt 1, 1B, & 2)



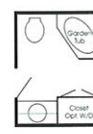
38RLRD Signature XL & Signature LTD (Available with Opt 2)



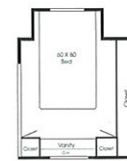
34FK Signature LTD Travel Trailer (Available with Opt 4)



(OPT 1)
Garden Tub Bath



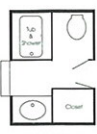
(OPT 1B)
Garden Tub Bath



(OPT 2)
Bed Slide w/vanity



(OPT 3)
Bed Slide



(OPT 4)
Bath

Signature XL & Signature LTD Standard Features

Two-year Structural Warranty Standard on both Signature LTD and Signature XL

Exterior

- 30" radius entrance door
- Built-in twin 30# LP bottles w/auto changeover
- One-piece EPDM rubber roof
- Triple entry step(s)
- Flush door latch w/dead bolt lock
- Locking white framed baggage doors
- White-framed, tinted, radiused jalousie windows
- Outside storage compartment(s)
- Rear stone guard
- Aluminum bumper cover
- Sewer hose storage
- Patio light
- Exterior light under gooseneck
- Large front storage compartment
- Battery box compartment
- Grab handle at entrance door
- Triple Slide-out seal
- Rolled lower side metal

Construction

- Smooth fiberglass exterior
- Aluminum framed fully-laminated sidewall, floor & end walls
- Block foam sidewall/floor insulation
- 5" truss rafters w/3/8" decking full length
- Extra-tough rubber roof (one piece)
- Track-guided, electric slide room
- Carpeted and lighted storage compartments
- Laminated galvanized steel under flooring
- One-piece, 5/8" seamless Weyerhaeuser Structurwood floor decking

Running Gear

- 2" x 8" tubular steel box frame (2" x 6" plus 2" x 2")

Electrical

- Ceiling lights w/wall switch
- Battery box with positive ventilation
- Receptacles, 110-volt with ground fault interrupter
- 110-volt outlet in slide room
- 30-amp electrical service
- 45-amp convertor with charger

- Patio light
- 12-volt lights in slide room

Appliances/Equipment

- Double door refrigerator
- Microwave
- 3-burner range/oven with high output burner
- 6-gallon gas/electric water heater with DSI
- Double bowl stainless sink
- Sink cover
- 31,000 BTU furnace 28"—32', 35,000 BTU furnace 34' and up
- Demand water pump
- 13,500 BTU ducted A/C
- Water heater bypass
- Stereo/cassette w/4 speakers
- Combination range exhaust, light, and monitor panel
- TV antenna with booster
- Cable TV hook-up
- Second TV outlet with stand in bedroom
- Color, coordinated roll-out side awning
- Roof rack and ladder (5th Wheel only)

Interior

- 60" x 74" queen bed (60" x 80" in bedroom slide-out)
- Roof vents
- Fire extinguisher
- Smoke detector
- Oak edged counter tops
- Solid, raised-oak cabinet doors

- Vinyl floor, kitchen and entry
- Adjustable ceiling A/C ducts
- Interior grab handle at entrance door
- Innerspring mattress
- Bedspread
- Sofa hide-a-bed
- Designer booth dinette with storage door
- Decorative interior vinyl-covered wallboard
- Plush, durable residential-style carpeting (30 oz)
- Thick foam padding
- Mini-blinds
- Baltic birch solid wood drawer sides
- Slide-out switch inside/outside
- Bed lifters
- Armstrong no wax vinyl flooring
- Designer valances
- Decorative galley rail

Bath

- Medicine cabinet w/mirror door
- Power roof vent
- Fiberglass shower surround with glass shower door (N/A Bath #4)
- Thetford toilet
- Towel bar, toothbrush holder & toilet tissue holder

Signature XL Upgrades

Same standard features as the Signature LTD plus the following:

- Fiberglass caps front & back
- Rocker/recliner/glider chair in place of the swivel rocker

- Solid oak free standing pedestal table with matching upholstered dinette chairs in place of built in booth
- Color coordinated day/night shades in place of mini-blinds
- Solid raised oak refrigerator front
- Make up lights in bath
- Fluorescent lights in kitchen and living room
- Skylight above shower
- Shock Absorbers
- Electric front jack (FW only)
- Spare tire carrier

Since we constantly strive to improve our product, all specifications are subject to change without notice.

Vehicle Loading—Every effort has been made to provide the greatest number of options for the recreation vehicle owner. Along with these choices comes the responsibility to manage the loads that are imposed by the choices so that they remain within the manufacturer's specified chassis weight limits. Do not overload the recreation vehicle.

Dry weights based on standard features; optional equipment not included. Net carrying capacity (NCC) determined by subtracting unloaded vehicle weight (UVW) from gross vehicle weight (GVWR) and includes fluids, options and cargo. Liquid capacities and weights are approximations only.



This brochure is printed on recycled paper as part of Thor's corporate effort to minimize waste and conserve our natural resources. We know you will join us in this effort to maintain North America's great outdoors. For who appreciates the natural beauty of our open spaces more than an RV'er?

1997 SIGNATURE XL & SIGNATURE LTD									
	28RK	32RK	32SA	34RK	34RL RD	36RK	36RL	38RL RD	34FK TT
Length	28'11"	32'1"	32'1"	33'10"	35'3"	36' 3 3/4"	36' 3 3/4"	38' 2 1/2"	33' 10"
Width	96"	96"	96"	96"	96"	96"	96"	96"	96"
Hitch Dry Weight	1120	1510	1520	1940	1680	1860	NA	1800	1080
Axle Dry Weight	6240	6750	6500	6720	6860	7500	NA	8060	8500
GVWR	9920	11910	11920	12340	12080	12260	NA	15000	11480
UVW	7360	8260	8020	8660	8640	8860	NA	9860	7420
NCC	2560	3410	3660	2960	3200	2660	NA	5140	3820
Tandem axle w/4 wheel electric brakes	—	—	—	—	—	—	Triple Axle	Triple Axle	—
Radial Tire Size	ST225 75R15	ST225 75R15	ST225 75R15	ST225 75R15	ST225 75R15	ST225 75R15	ST225 75R15	ST225 75R15	ST225 75R15
Tire Load Range	D	D	D	D	D	D	D	D	D
Dual Waste Water	90	90	90	90	90	90	90	90	90
Fresh Water	46	46	46	46	46	46	46	46	46
Furnace BTU	31M	31M	31M	35M	35M	35M	35M	35M	31M

YOUR LOCAL DEALER



THOR
AMERICA'S BEST RV VALUE

**SIGNATURE
MANUFACTURING, INC.**
305 Steury Ave • Goshen, IN 46526
219-534-1224