

# Dutchmen

*& Classic*

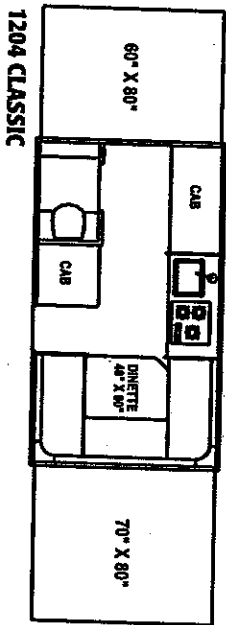
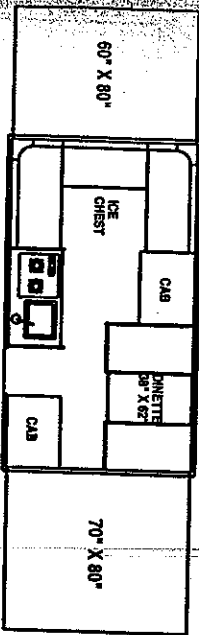
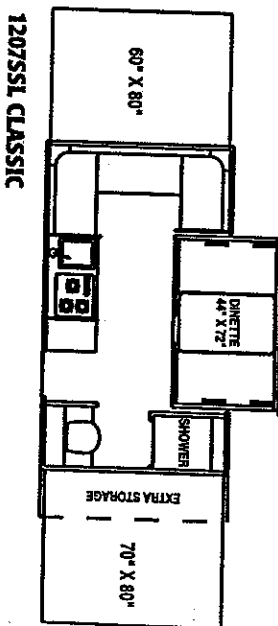
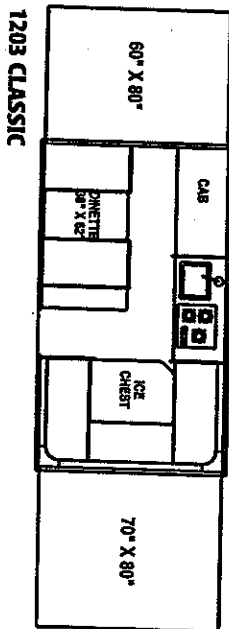
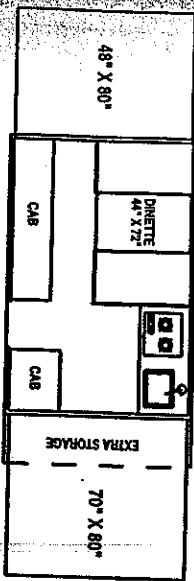
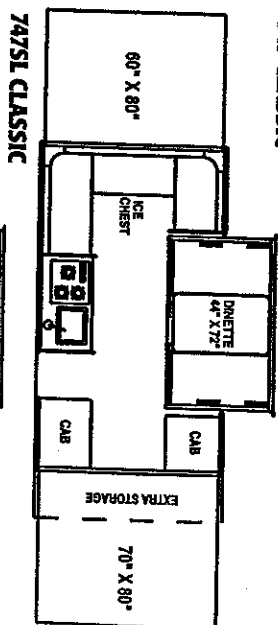
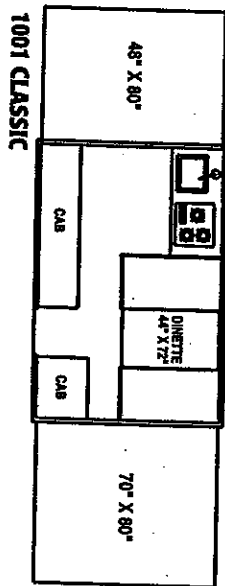
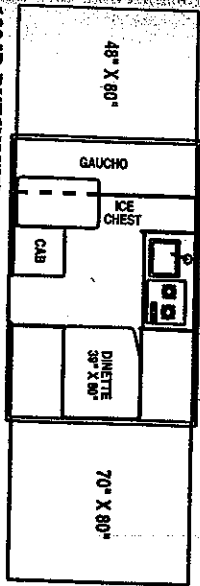
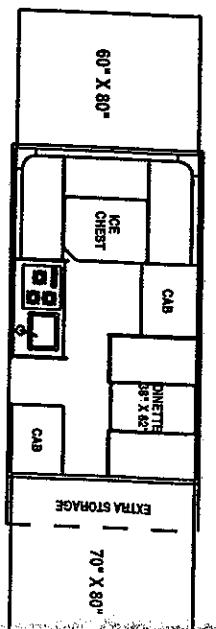
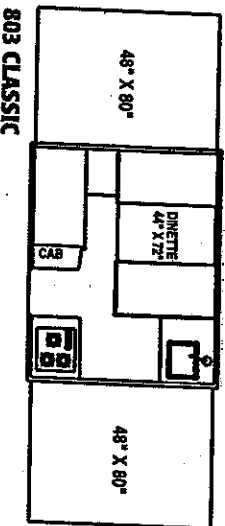
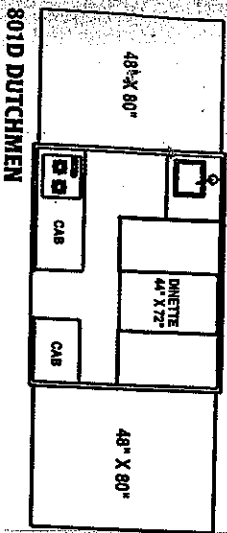


# There is simply no finer camper than a Dutchmen.



Right from the start, Dutchmen fold-downs have been the first choice of campers who want more: more quality features, more durability, and more value for their RV investment. And that's what Dutchmen has always delivered. Take a good, hard look at a Dutchmen camper, and you'll agree. And Dutchmen offers you one more advantage: your new Dutchmen camper is backed by Thor Industries, the second largest builder of RVs in North America. Thor's strong financial condition and years of uninterrupted growth are your assurance that we will be here to serve you for years to come. We think this extra "peace of mind" is important when you're making your RV investment.

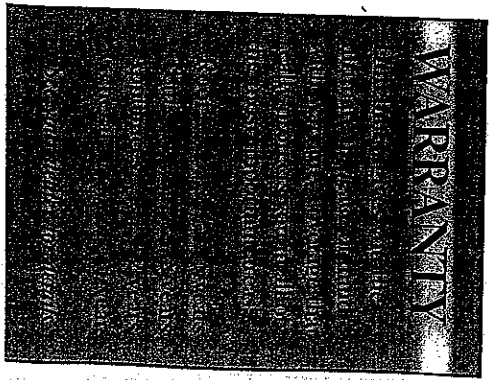
The strength and durability of Dutchmen campers is easy to see. If a Dutchmen can handle this kind of load, it can take just about anything your family can deliver.



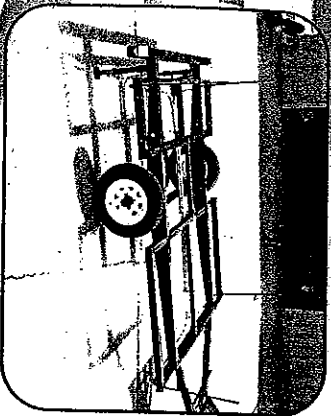
**DUTCHMEN MODELS**

**CLASSIC MODELS**

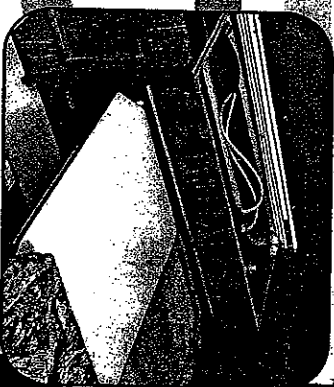
	1999 Models		801D		1004D		1006XSD		1205D		803		1001		1203		1204		747		747SL		1207SSL	
Interior Length Open	17' 6"	21' 0"	21' 0"	21' 0"	24' 0"	17' 6"	21' 0"	24' 0"	24' 0"	24' 0"	24' 0"	24' 0"	24' 0"	24' 0"	24' 0"	24' 0"	24' 0"	24' 0"	24' 0"	24' 0"	24' 0"	24' 0"	24' 0"	24' 0"
Interior Width	6' 8"	6' 8"	6' 8"	6' 8"	6' 8"	6' 8"	6' 8"	6' 8"	6' 8"	6' 8"	6' 8"	6' 8"	6' 8"	6' 8"	6' 8"	6' 8"	6' 8"	6' 8"	6' 8"	6' 8"	6' 8"	6' 8"	6' 8"	
Interior Height Open	6' 7"	6' 7"	6' 7"	6' 7"	6' 7"	6' 7"	6' 7"	6' 7"	6' 7"	6' 7"	6' 7"	6' 7"	6' 7"	6' 7"	6' 7"	6' 7"	6' 7"	6' 7"	6' 7"	6' 7"	6' 7"	6' 7"	6' 7"	
Height Closed	4' 4"	4' 4"	4' 4"	4' 4"	4' 4"	4' 4"	4' 4"	4' 4"	4' 4"	4' 4"	4' 4"	4' 4"	4' 4"	4' 4"	4' 4"	4' 4"	4' 4"	4' 4"	4' 4"	4' 4"	4' 4"	4' 4"	4' 4"	
Sleeping Capacity	6	8	8	8	8	6	8	8	8	8	6	8	8	8	8	8	8	8	8	8	8	8	7	
Trailer Size Closed	12'6" x 7'1"	14' x 7'1"	16' x 7'1"	16' x 7'1"	16' x 7'1"	12'6" x 7'1"	14' x 7'1"	16' x 7'1"	16' x 7'1"	16' x 7'1"	16' x 7'1"	16' x 7'1"	16' x 7'1"	16' x 7'1"	16' x 7'1"	16' x 7'1"	16' x 7'1"	16' x 7'1"	16' x 7'1"	16' x 7'1"	16' x 7'1"	16' x 7'1"	16' x 7'1"	
Dry Weight—Axle (Approx)	1,196	1,346	1,513	1,561	1,256	1,424	1,585	1,717	1,950	2,120	1,996	1,996	1,996	1,996	1,996	1,996	1,996	1,996	1,996	1,996	1,996	1,996	1,996	
Dry Weight—Hitch (Approx)	160	250	170	240	200	220	250	240	130	160	160	160	160	160	160	160	160	160	160	160	160	160	160	
Total Weight (Approx)	1,356	1,596	1,683	1,801	1,456	1,644	1,835	1,957	2,080	2,280	2,156	2,156	2,156	2,156	2,156	2,156	2,156	2,156	2,156	2,156	2,156	2,156	2,156	
GVWR	1,999	1,999	2,260	2,330	1,999	1,999	2,500	2,500	2,700	2,750	2,750	2,750	2,750	2,750	2,750	2,750	2,750	2,750	2,750	2,750	2,750	2,750	2,750	
Carrying Capacity	643	403	577	529	543	355	665	543	620	470	594	594	594	594	594	594	594	594	594	594	594	594	594	



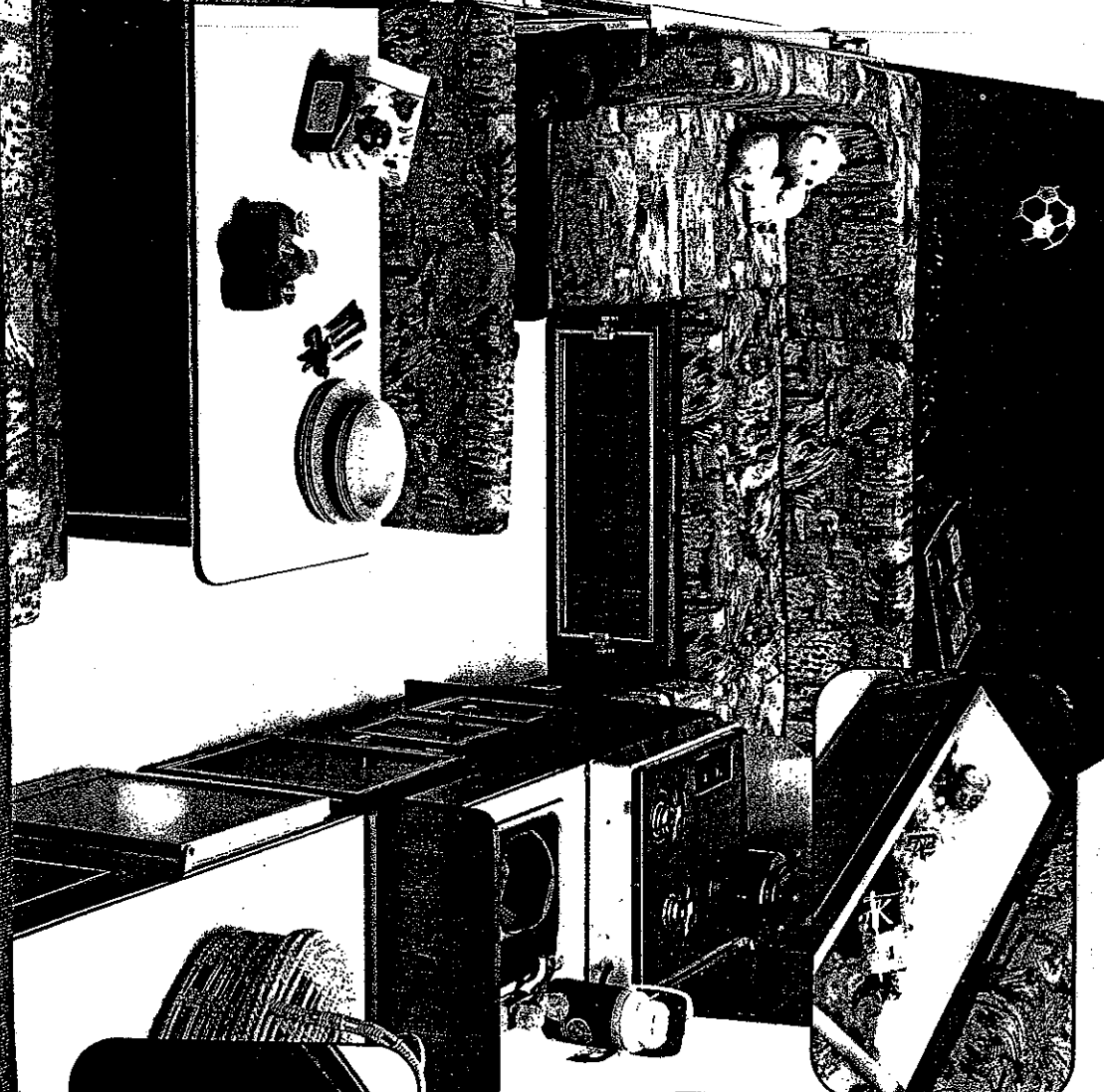
# Features



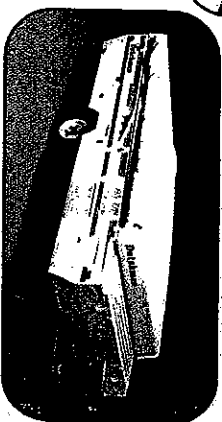
As a factory prepared rail frame matched with wide-track torsion axle gives you superior strength and towability.



Dutchman's fold-down galley drops easily into position to leave aisle space free for storage when the camper is closed.



Roof-load bars provide extra strength to the roof, secure support for an air conditioner and protect from damage by heavy snow during winter storage.



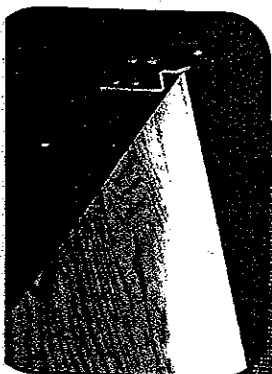
The 60-quart (33lb) ice chest keeps beverages and food items cold and fresh.

One-piece fiberglass sidewalls resist scratching and marring far better than conventional aluminum; the seamless one-piece fiberglass roof is light yet strong and leak-proof.

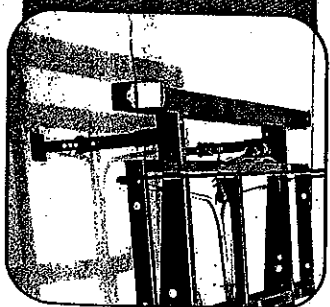


Dual-roller cabinet latches are the highest quality in the industry, and keep cabinet doors securely closed.

3" exterior-grade plywood bunk ends with full perimeter edge-glue to prevent warping and allow easy set-up with no binding.



Cavlar-15® sectionalized tent is beautiful and durable with superior stain-resistance.



Front and rear stabilizing jacks allow for easy leveling and increased comfort and safety.