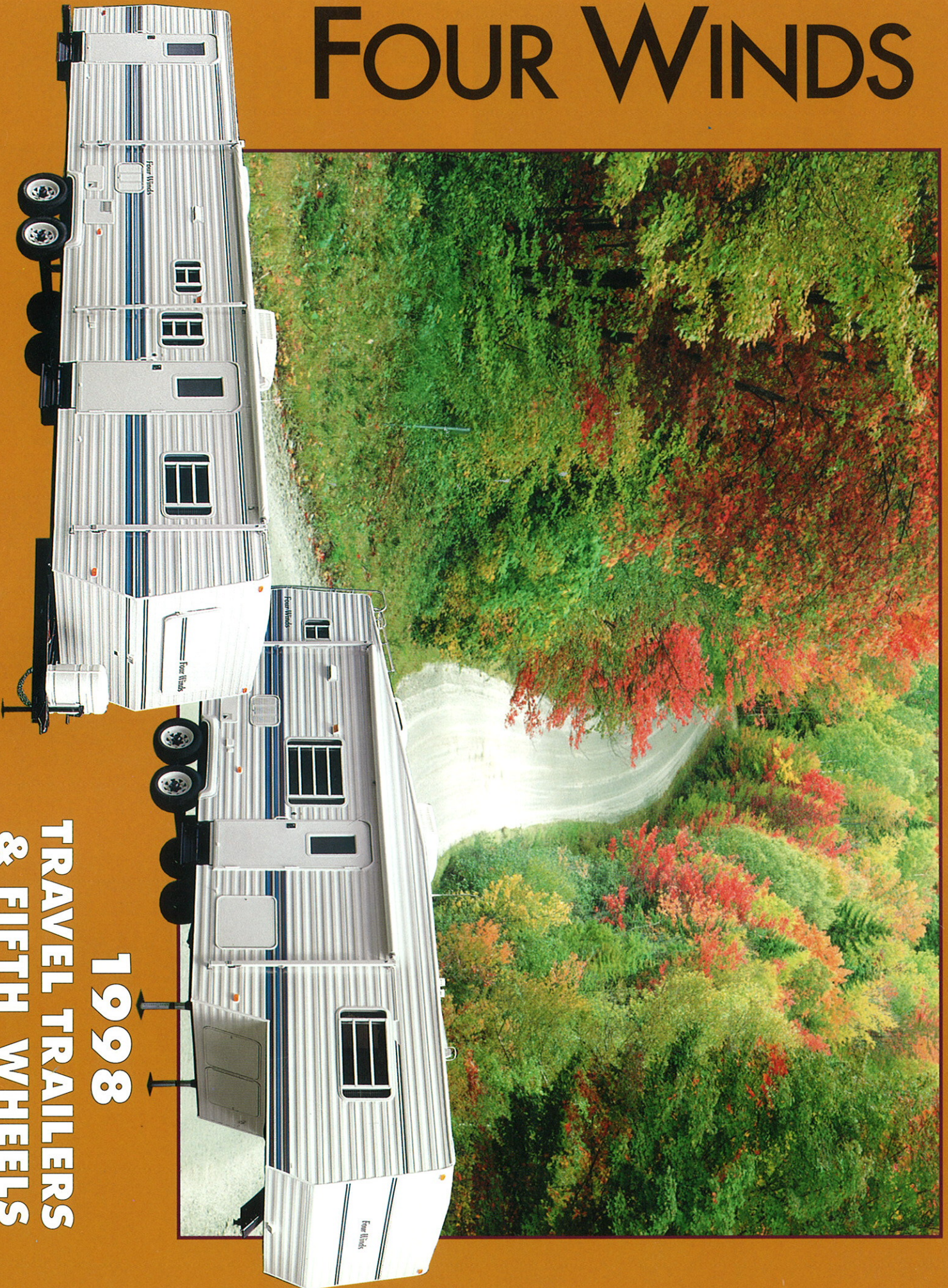


# FOUR WINDS

1998



**1998**  
**TRAVEL TRAILERS**  
**& FIFTH WHEELS**



# FOUR WINDS



## EXCEPTIONAL VALUES

Step into a new Four Winds trailer or fifth wheel and enter a world where craftsmanship and quality still matter. You'll see our commitment to quality is second to none and our craftsmen are the finest in the industry. And it shows: from the superior design and construction that are at the heart of a Four Winds to the high-quality appliances, beautiful oak cabinetry, luxurious fabrics and fine furniture, there is simply no other RV that gives you so much value for your dollar.

Whether you choose a trailer or a fifth wheel, you're sure to find a Four Winds floorplan that is perfect for your budget and your family's lifestyle. Our years of experience have taught us what you want and need in an RV, and we've brought it all together in the finest selection of floorplans available.

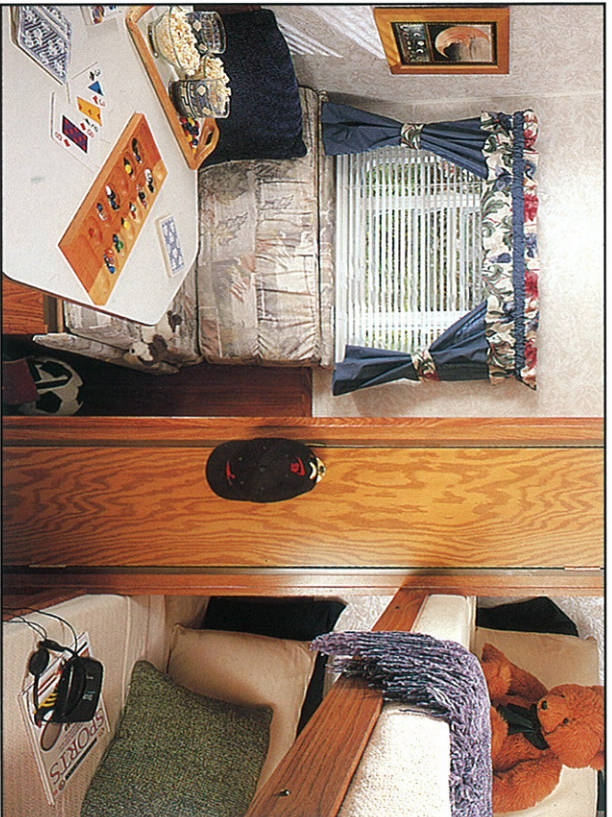
So step inside and see for yourself why we're so proud. You'll see why you should be the proud owner of a new Four Winds.





*All Four Winds trailers and fifth wheels are designed to give you maximum livability. But the addition of a slide-out lends a spaciousness you never dreamed was possible in an RV and makes your Four Winds as comfortable as your home. Slide mechanisms are built for long, trouble-free operation and, of course, are covered by Thor's exclusive 2 + 2<sup>nd</sup> Warranty: two years on structure and two years on major components.*





A bedroom slide, available in selected models, will give you spaciousness you never thought possible in a trailer of fifth wheel. And a hide-a-bed sofa in a slideout brings comfortable, restful sleep to the rest of your family or your guests.



Entertainment centers will add even greater livability to your Four Winds.

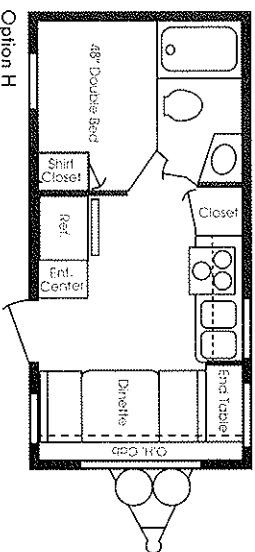


Upgrade your Four Winds with solid oak cabinet doors and drawer fronts for increased beauty, durability, and value. Travel in your Four Winds is made more comfortable by the stylish, well-planned bathrooms, fitted with quality appliances and plenty of storage space. In some models, the bathroom can be closed off to form a convenient dressing room.

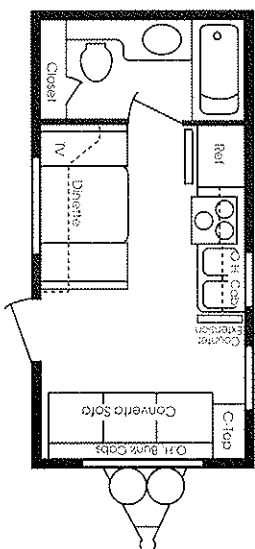


# FOUR WINDS TRAVEL TRAILERS

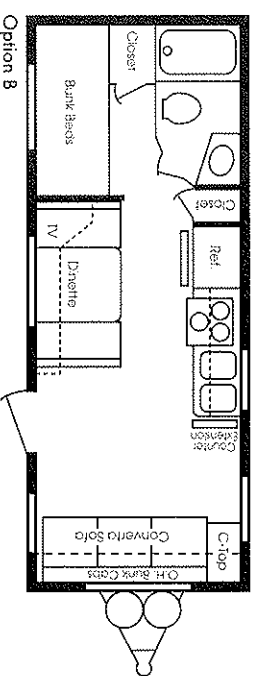
**19 FD**



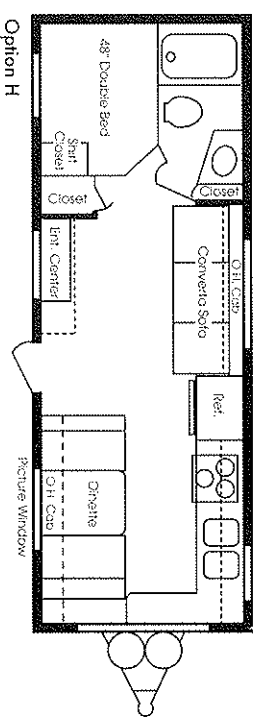
**19 RB**



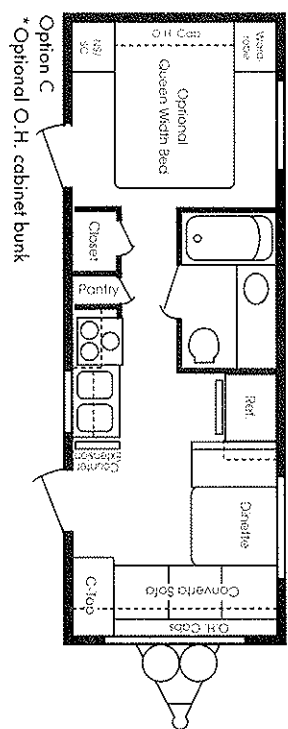
**22 BH**



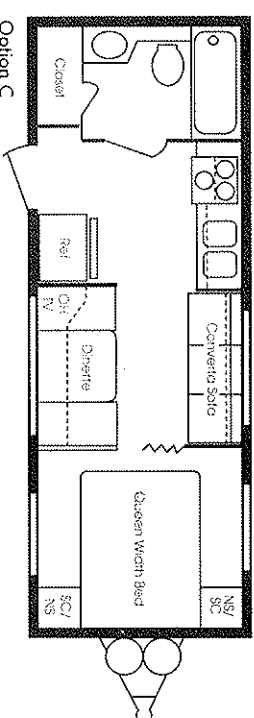
**24 FK**



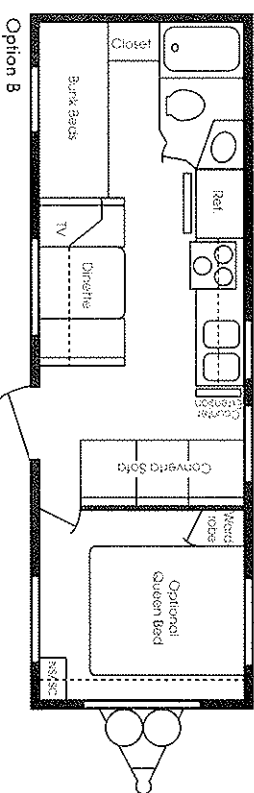
**24 FL-D**



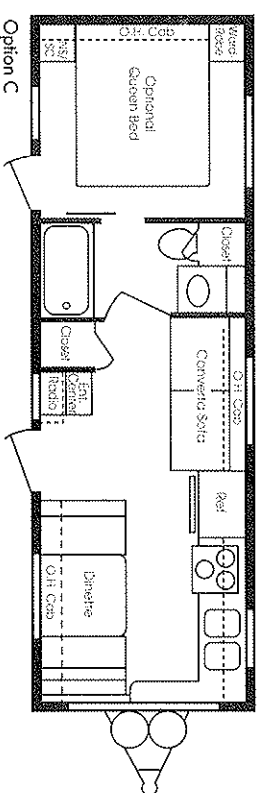
**24 QB**



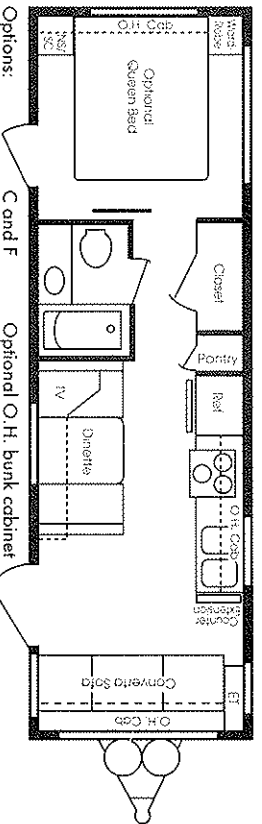
**26 B2**



**26 FK**

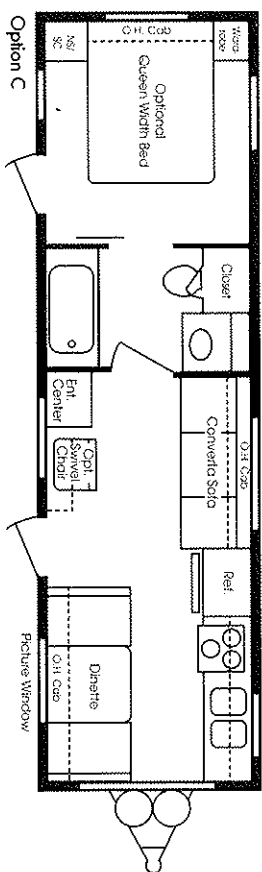


**26 FL**

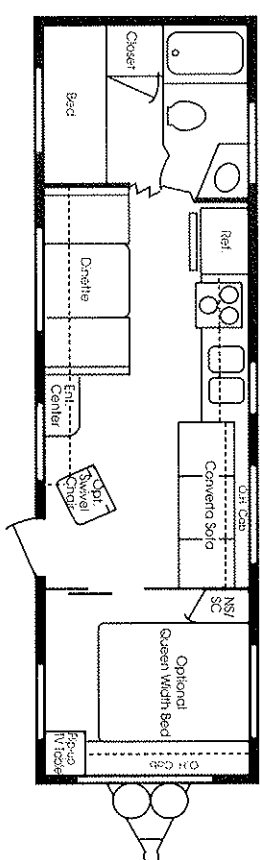


# LITES

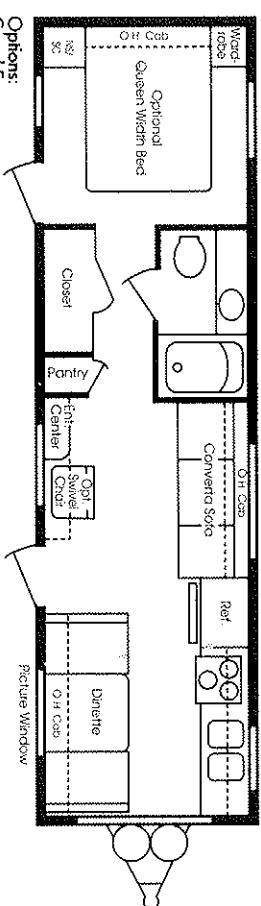
28 FK



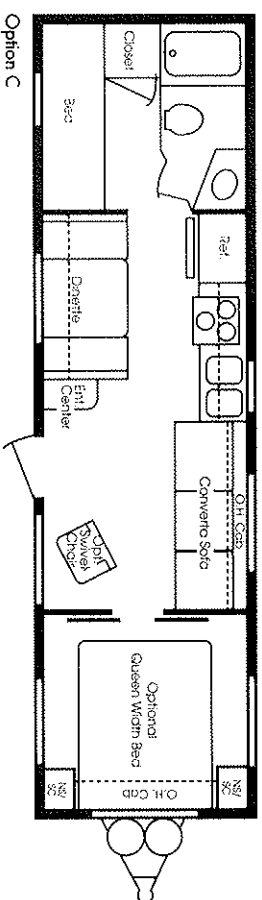
28 BH



30 FK

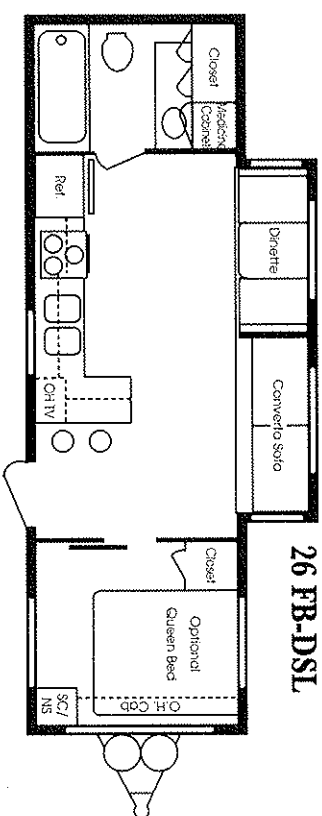


30 BH-2

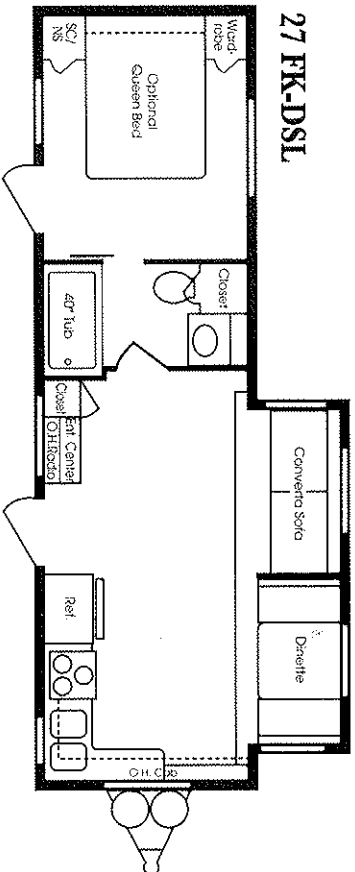


## TRAVEL TRAILERS

26 FB-DSL

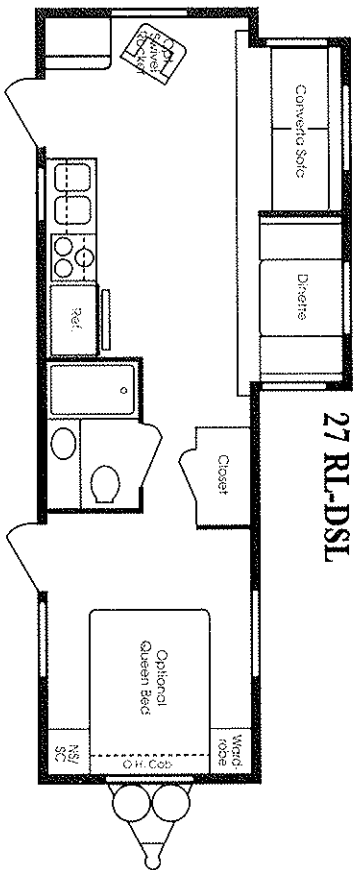


27 FK-DSL

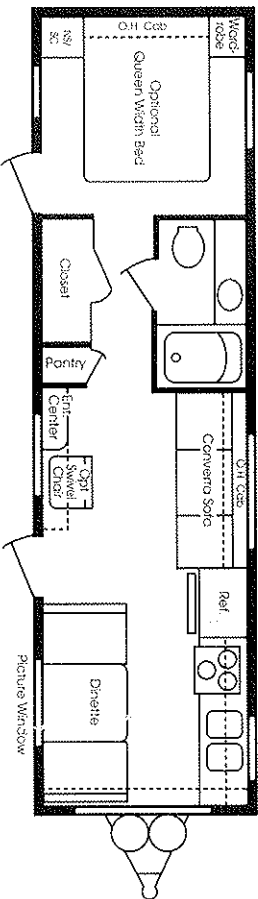


# FOUR WINDS TRAVEL TRAILERS

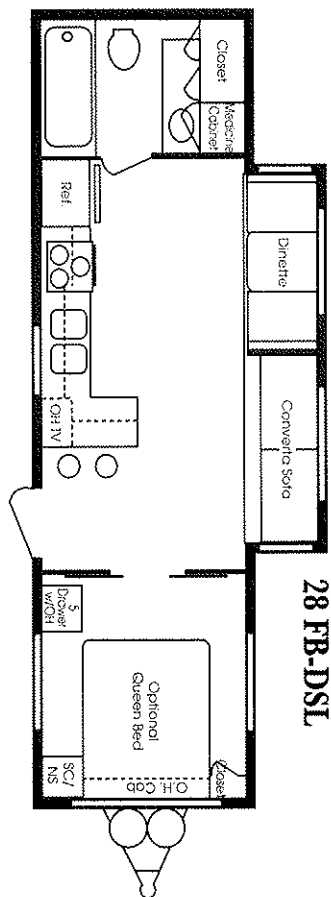
27 RL-DSL



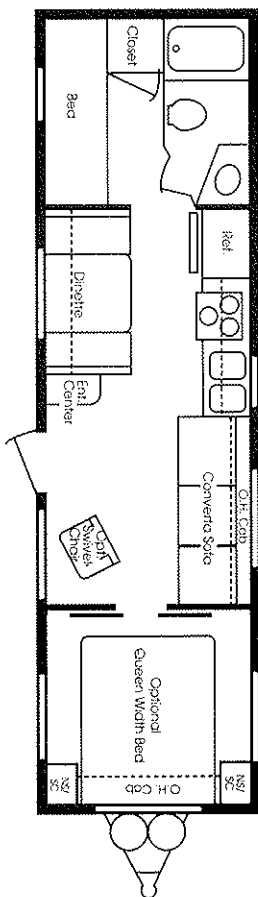
30 FK



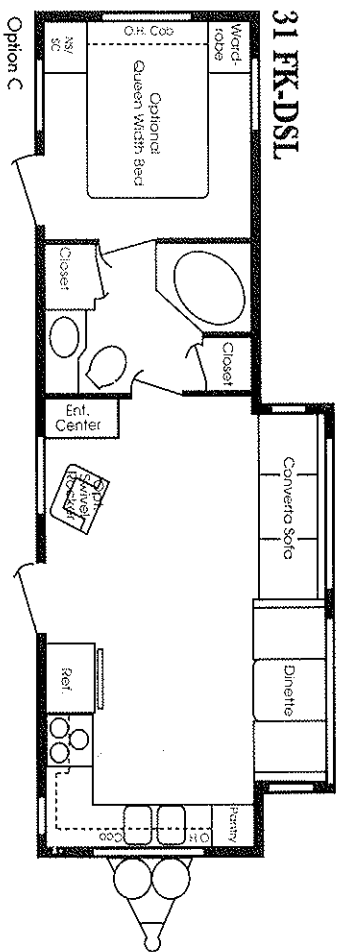
28 FB-DSL



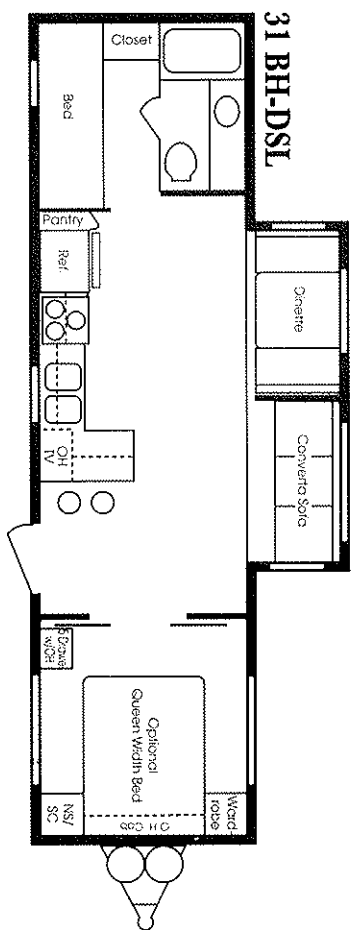
30 BH-2



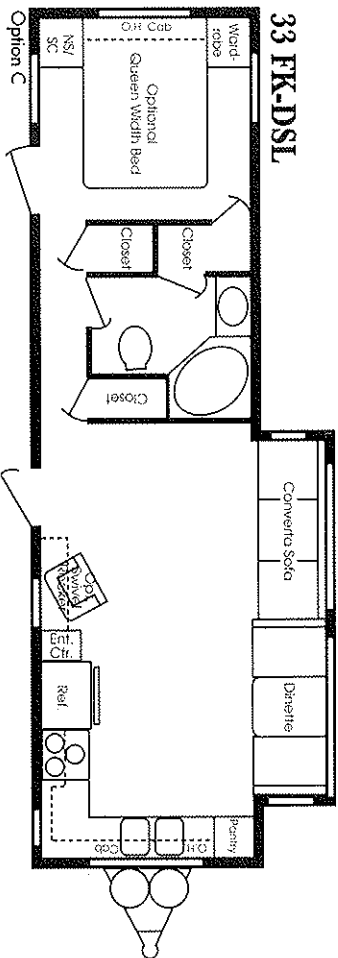
31 FK-DSL



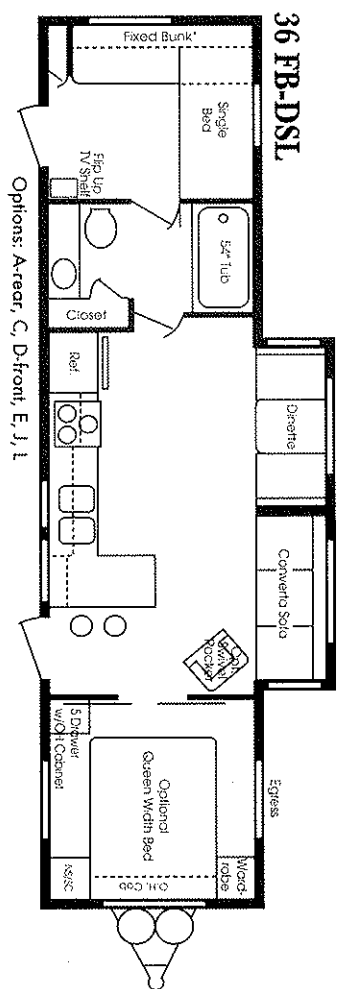
31 BH-DSL



33 FK-DSL

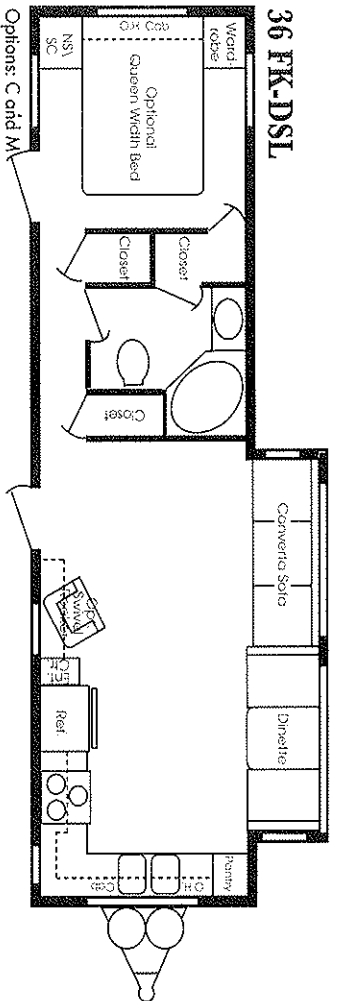


36 FB-DSL

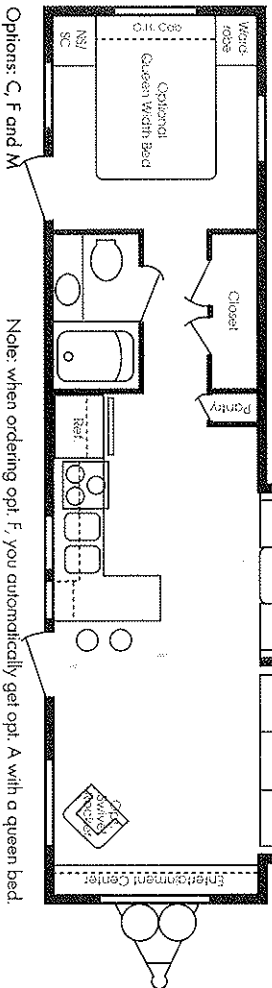


Options: A-rear, C, D-front, E, J, L

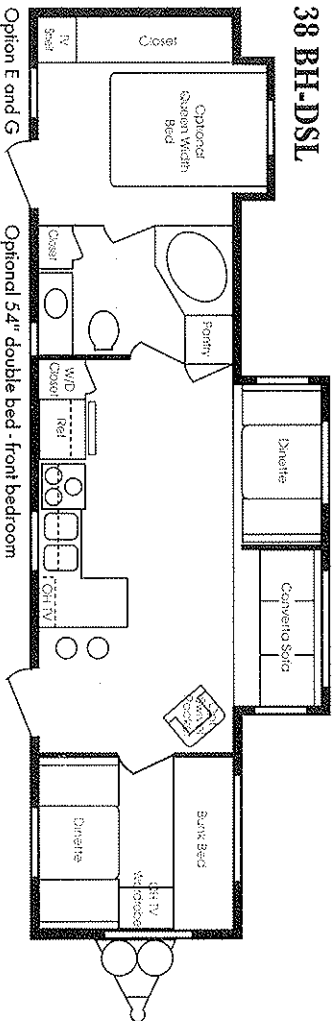
### 36 FK-DSL



### 36 FL-DSL



### 38 BH-DSL



## FOUR WINDS' AROUND THE CLOCK CUSTOMER CARE

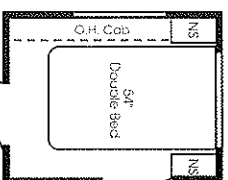
With your new Four Winds, you receive a complimentary one-year membership in Four Winds Manufacturing's Customer Care Program. Our exclusive 24 hour customer care benefits include:

- Fully paid emergency roadside assistance • 24-Hour toll free Technician Hot-line • Toll free Nationwide service appointment assistance • Free custom trip routing and full color map service delivered to your door • Warranty service assistance at over 6,800 qualified service agencies throughout North America and Canada • Free jump starts on listed tow vehicles • Free tire changes • Free fuel delivery • Free on-site mechanical service in the event of a breakdown.

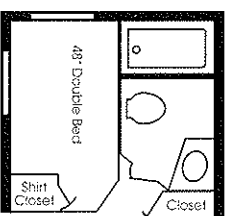
### Four Winds

Customer Care Roadside Assistance  
Join and Save South  
1-800-999-7993

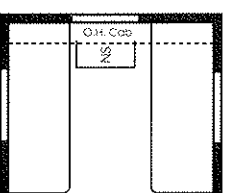
## FOUR WINDS TRAILER & 5TH WHEEL FLOORPLAN OPTIONS



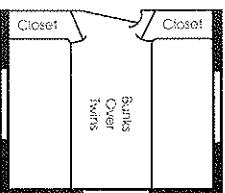
**OPTION: A**  
Rear Double Bed #1



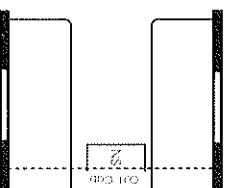
**OPTION: B**  
Rear Double Bed #2



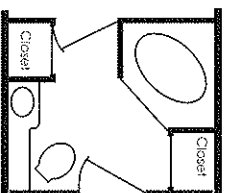
**OPTION: C**  
Twin beds available in place of standard bed



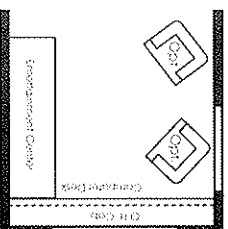
**OPTION: D**  
Bunks over twins



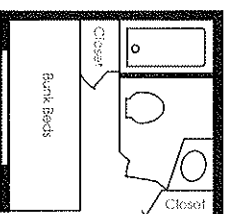
**OPTION: E**  
Twin beds available in place of standard bed



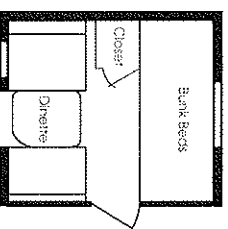
**OPTION: F**  
#2 Garden bath TT only



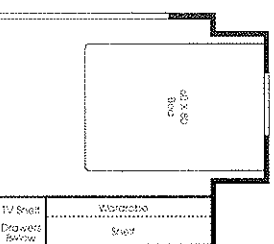
**OPTION: G**



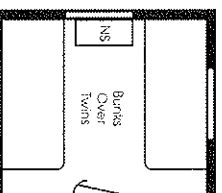
**OPTION: H**  
Rear bunk beds #2



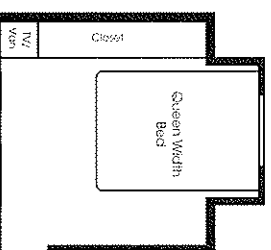
**OPTION: J**  
Rear bunk beds and dinette



**OPTION: K**  
Bed slide FW only



**OPTION: L**  
Bunks over twins  
Rear bed only



**OPTION: M**  
TT only



## TRAVEL TRAILERS

## Life

1998 Travel Trailer Models	19FD	19RB	22BH	24K	24K	24	24B	26B2	26K	26L	28BH	28K	30BH-2	30K
Sleeping Area	3	3	4	4	4	4	4	6	4	4	6	4	6	4
Length	20'5"	20'5"	23'4"	25'4"	25'5"	25'4"	27'4"	27'5"	27'5"	29'5"	29'5"	31'5"	31'5"	31'5"
Width (w/out awning)	9'6"	9'6"	9'6"	9'6"	9'6"	9'6"	9'6"	9'6"	9'6"	9'6"	9'6"	9'6"	9'6"	9'6"
Hitch Dry Weight (approx)	320	240	379	480	N/A	480	520	580	701	N/A	N/A	N/A	N/A	N/A
Axle Dry Weight (approx)	3,020	2,990	3,167	3,360	N/A	3,580	3,540	3,680	3,725	N/A	N/A	N/A	N/A	N/A
GVWR	7,320	7,240	7,379	7,480	N/A	7,400	7,320	7,580	7,701	N/A	N/A	N/A	N/A	N/A
UVM—Unloaded Vehicle Weight (approx)	3,340	3,220	3,546	3,840	N/A	3,980	4,060	4,240	4,426	N/A	N/A	N/A	N/A	N/A
NCC—Net Carrying Capacity	4,020	4,020	N/A	3,640	N/A	3,420	3,460	3,340	3,294	N/A	N/A	N/A	N/A	N/A
Radial	ST205	27205	ST205	ST205	ST205	ST205	ST205	ST205	ST205	N/A	N/A	N/A	N/A	N/A
Tire-Size	75R14	75R14	75R14	75R14	75R14	75R14	75R14	75R14	75R14	N/A	N/A	N/A	N/A	N/A
Tire Load Range	C	C	C	C	C	C	C	C	C	C	C	C	C	C
Axle Dry Weight Coupler Class Used	4	4	4	4	4	4	4	4	4	4	4	4	4	4
Dual LP Tanks w/Regulator and Changeover (Gals.)	5	5	5	5	5	5	5	5	5	5	5	7	7	5
Dual Waste Water Holding Tanks (Approx. Gals.)	60	60	60	60	60	60	60	60	60	60	60	60	60	60
Demand Water System w/12V Pump (Approx. Gals.)	30	30	30	30	30	30	30	30	30	30	30	30	30	30
Furnace w/12V Fan and Thermostat (BTUS)	20M	20M	20M	20M	20M	25M	25M	25M	25M	31M	31M	31M	31M	31M

Note: Classic weights include air/awning/microwave and 30-lb bottle.

## Classic

30BH-2	30K
6	4
31'4"	31'4"
9'6"	9'6"
560	900
4,900	4,020
7,560	7,920
5,240	5,520
2,100	2,390
ST205	ST205
5R15	75R15
C	C
4	4
7	7
60	60
30	30
31M	31M

## Slide Outs

26FB	26FK	27FK	27RL	28FB	31BH	31FK	33FK	36FB	36FK	36FL	38BH
DSL	DSL	DSL	DSL	DSL	DSL	DSL	DSL	DSL	DSL	DSL	DSL
4	4	4	4	4	6	4	4	8	4	4	8
26'11"	26'11"	27'5"	27'5"	29'5"	31'11"	31'11"	33'11"	36'11"	36'11"	36'11"	38'11"
9'6"	9'6"	9'6"	9'6"	9'6"	9'6"	9'6"	9'6"	9'6"	9'6"	9'6"	9'6"
700	1,060	N/A	N/A	880	600	1,020	1,180	720	1,060	1,000	1,280
5,220	4,940	N/A	N/A	5,280	5,820	5,700	5,920	6,900	6,360	6,260	7,580
7,700	8,060	N/A	N/A	7,880	9,400	9,820	9,980	9,520	9,860	9,800	10,080
5,920	6,000	N/A	N/A	6,160	6,420	6,720	7,100	7,620	7,440	7,260	8,680
1,780	2,060	N/A	N/A	1,720	2,980	3,100	2,880	1,900	2,420	2,540	1,200
ST225	ST225	ST225	ST225	ST225	ST225	ST225	ST225	ST225	ST225	ST225	ST225
75R15	75R15	75R15	75R15	75R15	75R15	75R15	75R15	75R15	75R15	75R15	75R15
C	C	C	C	C	D	D	D	D	D	D	D
N/A	4	4	4	4	3	3	4	3	4	4	4
N/A	7	7	7	7	7	7	7	7	7	7	7
60	90	60	60	60	60	90	90	60	90	60	90
30	30	30	30	30	30	30	30	30	30	30	30
31M	31M	31M	31M	31M	31M	31M	35M	35M	35M	35M	35M

## FIFTH WHEELS

## Life

1998 FIFTH WHEEL MODELS	22RB-2	24CK	26RK-2
Sleeping Area	4	4	4
Length	22'11"	24'11"	26'11"
Width w/o Awning	9'6"	9'6"	9'6"
Hitch Dry Weight (Approx)	765	N/A	N/A
Axle Dry Weight (approx)	3,691	N/A	N/A
GVWR	7,820	N/A	N/A
UVM—Unloaded Vehicle Weight	4,386	N/A	N/A
NCC—Net Carrying Capacity	3,399	N/A	N/A
Radial	ST225	ST205	ST205
Tire-Size	75R15	75R15	75R15
Tire Load Range	C	C	C
Dual LP Tanks w/Regulator and Changeover (Gals.)	4	7	7
Dual Waste Water Holding Tanks (Approx. Gals.)	60	60	60
Demand Water System w/12V Pump (Approx. Gals.)	30	30	30
Furnace w/12V Fan/Thermostat (BTUS)	25M	25M	25M

## Slide Outs

24RL	26RL	27BH	27RK	27RK	30BH	30RK	30RL	33RK	35-2B
LSM	SSL-2	LSM	LSM-2	SL	SL	SL	SL	SL	SL
5	4	6	4	4	7	4	4	4	7
24'11"	26'11"	27'11"	27'11"	27'11"	30'11"	30'11"	30'11"	33'11"	35'11"
9'6"	9'6"	9'6"	9'6"	9'6"	9'6"	9'6"	9'6"	9'6"	9'6"
740	1,120	1,120	1,100	1,200	1,400	1,320	1,360	1,360	1,500
5,480	5,420	5,540	5,680	5,780	6,080	6,100	5,960	6,560	6,420
7,740	8,120	9,320	9,900	10,000	10,200	10,120	10,160	10,160	10,300
6,200	6,540	6,560	6,780	6,980	7,480	7,420	7,320	7,940	7,920
1,540	1,580	3,260	3,120	3,020	2,720	2,700	2,840	2,220	2,380
ST225	ST225	ST225	ST225	ST225	ST225	ST225	ST225	ST225	ST225
75R15	75R15	75R15	75R15	75R15	75R15	75R15	75R15	75R15	75R15
C	C	D	D	D	C	C	D	D	D
7	7	7	7	7	7	7	7	7	7
60	60	90	90	90	60	90	60	90	120
30	30	30	30	30	30	30	30	30	30
31M	31M	31M	31M	31M	31M	31M	31M	35M	35M

## THOR'S "2+2" WARRANTY

2 year limited structural warranty and 2 years on major components

*The best protection in the RV Industry!*

*See your dealer for all the details.*

**Vehicle Loading**—Every effort has been made to provide the greatest number of options for the recreation vehicle owner. Along with these choices comes the responsibility to manage the loads that are imposed by the choices so that they remain within the manufacturer's specified chassis weight limits. Do not overload the recreation vehicle.

**Dry weights** based on standard features; optional equipment not included. Net carrying capacity (NCC) determined by subtracting unloaded vehicle weight (UVW) from gross vehicle weight (GVWR) and includes fluids, options and cargo. Liquid capacities and weights are approximations only.

**Warning:** This information is intended as a guide only. Weights of individual vehicles may vary. Consult your owner's manual for complete loading, weighing and towing instructions.

**THOR**  
AMERICA'S BEST RV VALUE

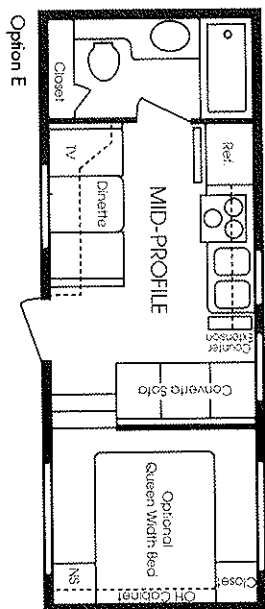


This brochure is printed on recycled paper as part of Thor's corporate effort to minimize waste and conserve our natural resources. We know you will join us in this effort to maintain North America's great outdoors. For who appreciates the natural beauty of our open spaces more than an RVer?

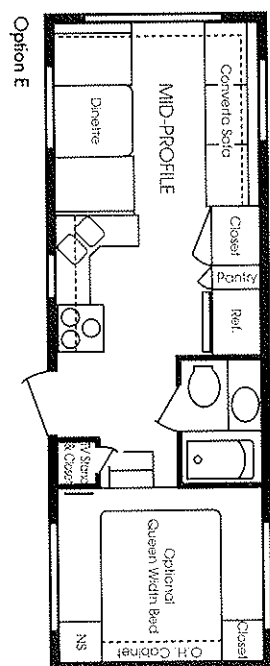


# FOUR WINDS FIFTH WHEELS

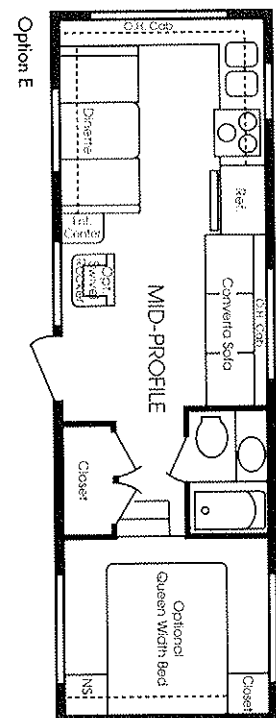
**22 RB-2 - LITE**



**24 CK - LITE**

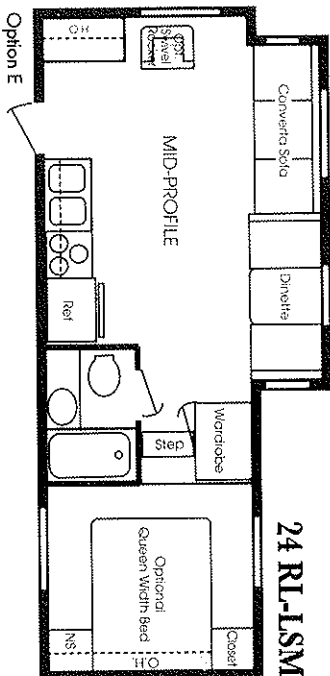


**26 RK-2 - LITE**

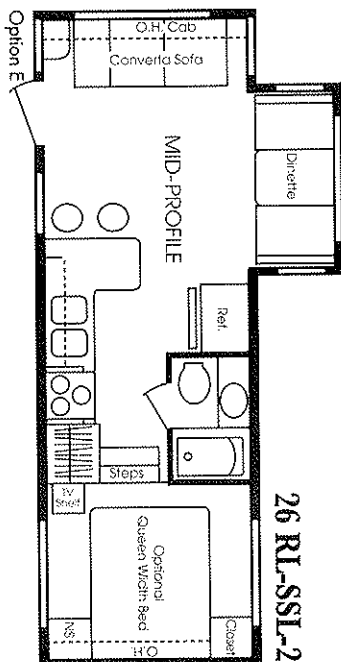


## FIFTH WHEELS WITH SLIDEOUTS

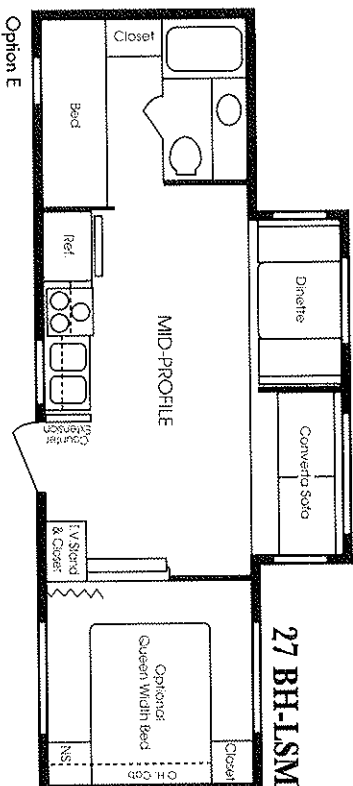
**24 RL-LSM**



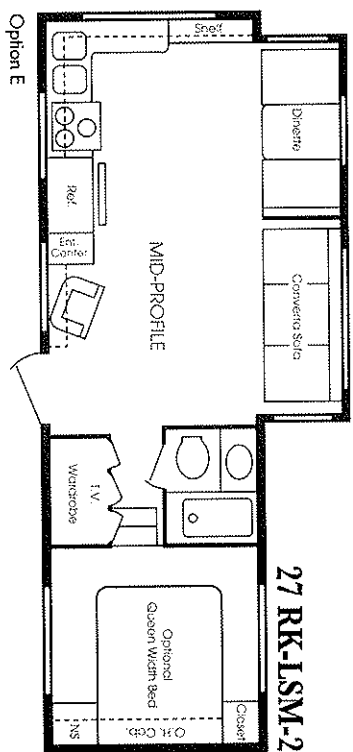
**26 RL-SSL-2**



**27 BH-LSM**

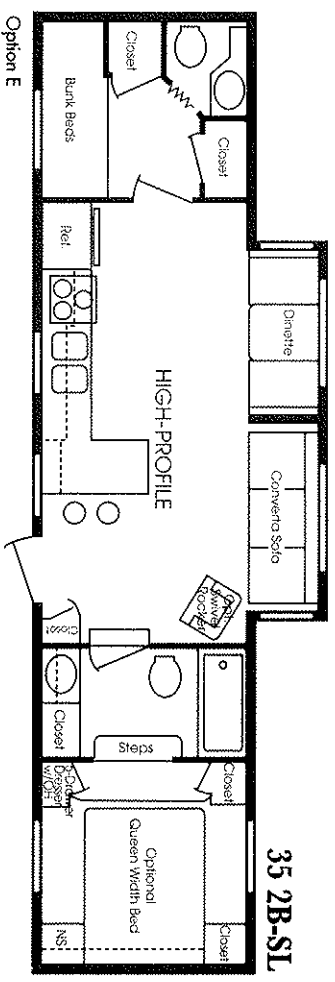
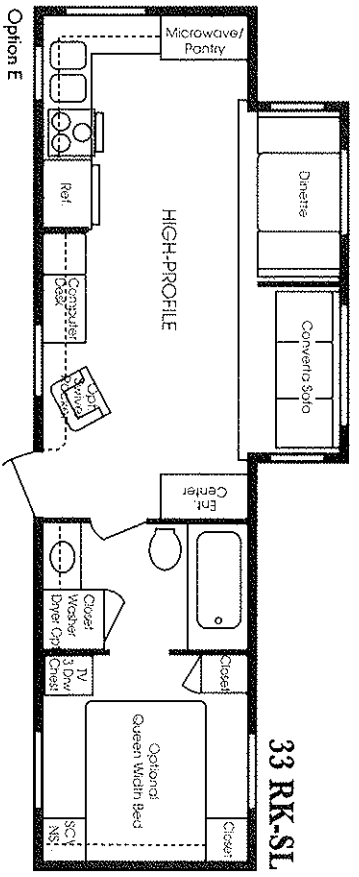
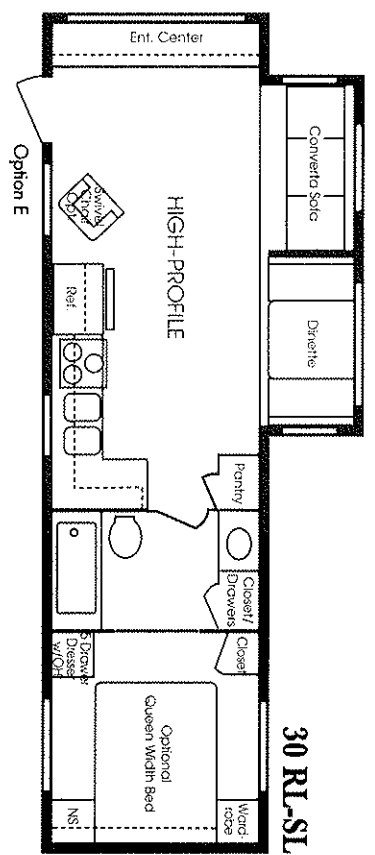
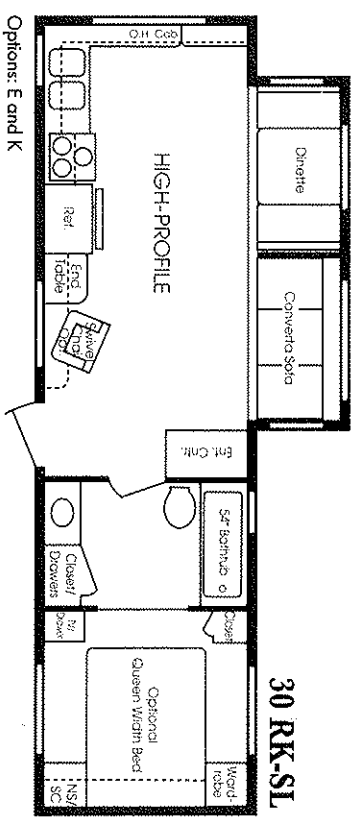
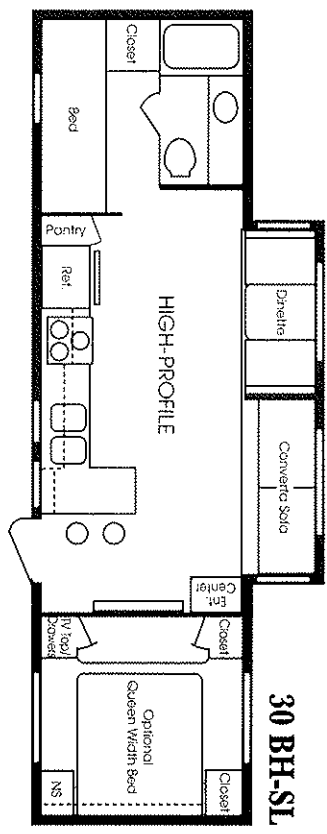
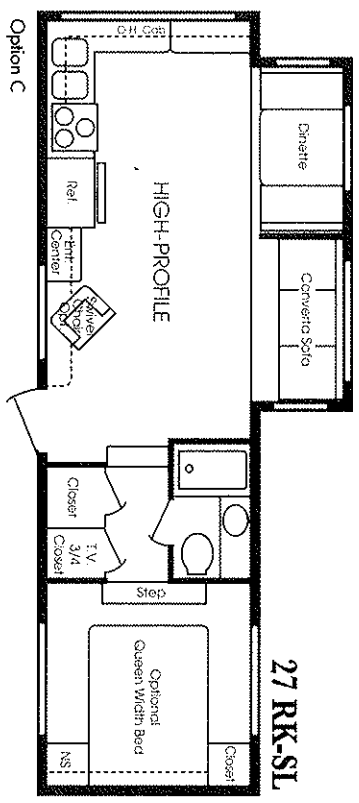


**27 RK-LSM-2**

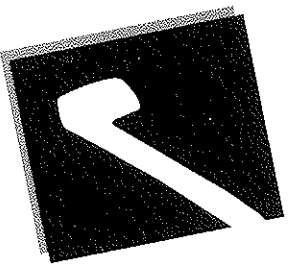




# FIFTH WHEELS WITH SLIDEOUTS







# CHECK IT OUT AND CHECK IT OFF.

## FOUR WINDS FEATURES

### Exterior

- ☐ 30" Entry door on most floor plans
- ☐ Easy to use double step at main entry door on non-slide trailers

- ☐ Easy to use triple step at main entry door on all large slide-out units
- ☐ Extra large jalousie clamp ring windows—no screw covers

- ☐ Exterior storage wherever possible
- ☐ Front radius rock guard awning
- ☐ Hitch light *(most models)*
- ☐ Oversized radial tires
- ☐ Patio light

- ☐ Radius entry doors
- ☐ Rear bumper w/hidden sewer hose compartment
- ☐ Tandem Axle w/4 wheel electric brakes
- ☐ Tinted radius torque windows

### Interior

- ☐ 30 oz. stain resistant polypropylene carpet
- ☐ 48" or 54" double bed where applicable
- ☐ Bath tub wall surround
- ☐ Cable ready TV hook-up
- ☐ Colorful framed artwork
- ☐ Combination shirt closet over nightstand *(wherever possible)*

- ☐ Knife holder behind range
- ☐ Lamberquin window treatments
- ☐ Large residential size stainless steel kitchen sink
- ☐ Marine toilet
- ☐ Mini blinds
- ☐ Radius cabinet styles *(rounded corners)*
- ☐ Reinforced bed base w/lifts on all Queen beds

- ☐ Shower curtain
- ☐ Silverware drawer
- ☐ Sofa bolsters
- ☐ Vented hinge-style egress windows
- ☐ Vinyl in separated bedroom areas
- ☐ Baltic Birch wood drawer sides

### Systems

- ☐ 20 lb. gas bottles
- ☐ 45-amp converter
- ☐ 6-gallon gas/electric water heater w/autolite and adjustable thermostat
- ☐ Ceiling ducted air on units *(26' and above)*
- ☐ Ground fault interrupter
- ☐ Monitor panel
- ☐ Power cord w/hatch
- ☐ Power roof vent in bath

### Appliances

- ☐ 3-burner range w/oversized oven *(12" x 16")*
- ☐ Adjustable TV antenna w/booster
- ☐ AM/FM cassette stereo system
- ☐ LP detector
- ☐ New Norcold 8 cu. ft. gas/electric refrigerator w/adjustable thermostat
- ☐ Smoke detector

### Construction

- ☐ 2-year structural and major component warranty
- ☐ 2" x 2" walls on 16" centers with 2" belt rail
- ☐ 5/8" Wood roof decking full length of coach
- ☐ 5/8" exterior grade-tongue and groove plywood floor
- ☐ Adjustable ceiling vents
- ☐ All frames are cambered to counteract sagging or drooping

- ☐ Bottom exterior metal attached with screws instead of staples
- ☐ Butyl rubber *(no putty tape or foam seal)* around all exterior windows, entry doors, compartment doors, and lights—a proven winner!
- ☐ Cabinets flush up against ceiling
- ☐ Dicor Corp. Butic-ply seamless EPDM roof covering w/fire retardant backing and 12-year warranty

- ☐ Galvanized steel straps around construction perimeter tying roof to sidewall to floor
- ☐ In-floor heat ducting
- ☐ Large 3" truss rafters with 3" grade *(26' and up)*
- ☐ Large support outriggers with solid continuous weld
- ☐ Single piston, track-guided slide mechanism
- ☐ Solid oak frame cabinet doors

### Classic Upgrade Features

*Create your own unit by adding:*

- ☐ 13,500 BTU roof air conditioner
- ☐ 15,000 BTU roof air conditioner
- ☐ 30 lb. LP gas bottles w/cover
- ☐ 6-Gallon gas/electric water heater w/DSI
- ☐ 10-Gallon gas/electric water heater w/DSI

- ☐ Bar stools
- ☐ Bath skylight *(selected models)*
- ☐ Bedroom roof vent
- ☐ Bedroom slide-out *(selected models)*
- ☐ Bedspread
- ☐ Bi-fold shower door
- ☐ Carpet in separated bedroom areas
- ☐ Chrome bumper

- ☐ Color coordinated roll out A & E awning *(center support included on 21' awnings)*
- ☐ Decor kits *(faux floral plants & decorative accessories)*
- ☐ Deluxe scissor-style stabilizer jacks
- ☐ Electric jacks *(PT only)*
- ☐ Freestanding table w/2 or 4 chairs
- ☐ Large microwave oven w/carousel
- ☐ Hide-a-bed sofa *(slide-out models only)*
- ☐ Queen beds *(selected models)*
- ☐ Recliner
- ☐ Sink cover
- ☐ Mini-blinds

- ☐ Color coordinated roll out A & E awning
- ☐ Decor kits
- ☐ Deluxe scissor-style stabilizer jacks
- ☐ Electric jacks *(PT only)*
- ☐ Freestanding table w/2 or 4 chairs
- ☐ Large microwave oven w/carousel
- ☐ Hide-a-bed sofa *(slide-out models only)*
- ☐ Queen beds *(selected models)*
- ☐ Recliner
- ☐ Sink cover
- ☐ Mini-blinds

### CLASSIC LITE FEATURES

- ☐ Lighter material to be substituted on dinette, bed and cabinet end panels
- ☐ New profile
- ☐ Dutchmen Classic Lite graphic
- ☐ Double front entry step

### Life Exterior

- ☐ 4" tubular chassis
- ☐ 4" A-frame (tubular)
- ☐ 1 1/2" tires
- ☐ Straight Axles #3500

### Life construction

- ☐ 4" tubular chassis
- ☐ 4" A-frame (tubular)
- ☐ 1 1/2" tires
- ☐ Straight Axles #3500

- ☐ Patio doors *(selected models)*
- ☐ Phone jacks
- ☐ Power tongue jacks *(TT only)*
- ☐ Roof rack & ladder
- ☐ Rear stone guard
- ☐ Spare tire kit w/carrier & cover—installed
- ☐ Solid oak cabinet doors throughout
- ☐ Stove cover
- ☐ Swivel rocker
- ☐ TV shelf & outlet in bedroom

*Because it is not possible at time of printing, some features are not available on all models. Some features are optional and others are standard. Some features are optional and others are standard. Some features are optional and others are standard.*

## THOR'S

## “2+2” WARRANTY

2 year limited structural warranty and 2 years on major components

*The best protection in the RV Industry!*

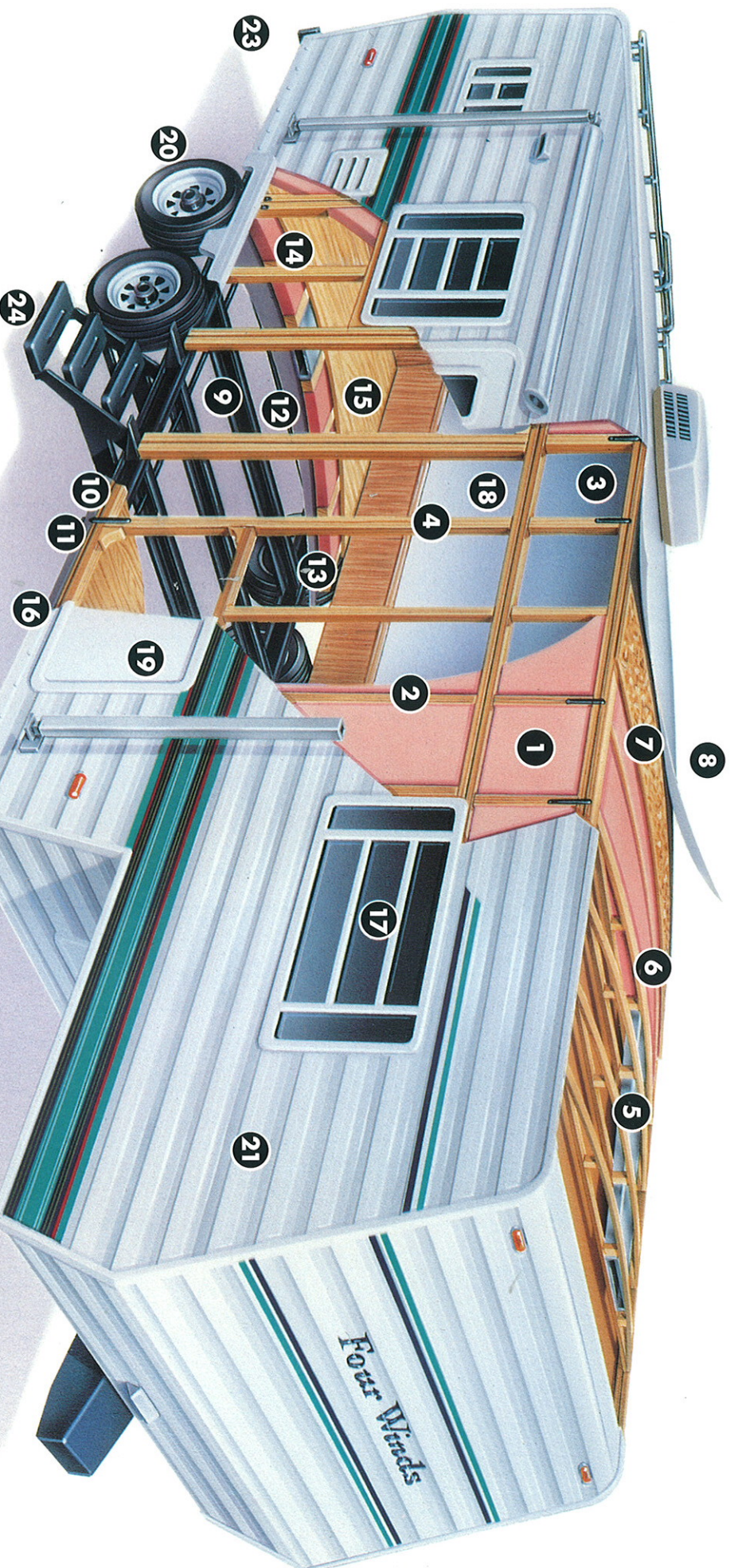
*See your dealer for all the details.*

## Four Winds

305 Steury Ave • Goshen, IN 46526  
219-534-1224



# NO MATTER HOW YOU SLICE IT, IT'S PURE VALUE!



## SIDEWALLS

- 1 Fiberglass insulation—cut & fitted for full expansion
- 2 2" x 2" on 16" centers with an extra 2" belt rail around the perimeter for extra strength
- 3 Galvanized steel straps around entire construction
- 4 Double or triple studding around all doors and windows

## ROOF

- 5 Large 5" truss roof rafters with 3" grade (26' & up) for better water run off
- 6 Fiberglass insulation—cut and fitted
- 7 3/8" wood roof decking full length of the coach
- 8 Dicor Corp. Brite-ply seamless EPDM roof covering w/fire retardant backing and 12-year warranty

## FLOOR

- 9 Box tube frame on all non-slides, I-beam frame on all slide-outs—cambered to prevent drooping
- 10 Large support outriggers w/solid continuous weld
- 11 Darco underbelly wrapped around the floor for extra water protection
- 12 2" x 3" studs running lengthwise to allow for heat duct installation
- 13 Fiberglass insulation—cut & fitted
- 14 3/8" exterior grade tongue-&-groove plywood floor
- 15 Either high grade vinyl flooring or 30oz. stain-resistant polypropylene carpet
- 16 Notice that the sidewall is placed on top of the floor

## EXTERIOR

- 17 Extra large tinted, radius, jalousie clamp ring windows that are sealed with butyl rubber for one of the best watertight seals in the industry
- 18 30" radius entry door on most floorplans
- 19 Exterior storage wherever possible
- 20 Oversized radial tires
- 21 Slack Mesa aluminum—.024
- 22 Bottom exterior aluminum attached with screws thru the side—water cannot be trapped, no staples to penetrate wood, or rust and fall out
- 23 Rear bumper w/hidden sewer hose compartment
- 24 Top quality—easy to use double or triple steps—Try them!





**Mystery Ecru/Mauve Carpet**



**Mystery Ecru/Green Carpet**



**Mystery Ecru/Blue Carpet**



**Winterwood Mauve**



**Winterwood Green**



**Winterwood Blue**



A roof rack and ladder will complete the look of your Four Winds and make roof cleaning and maintenance easier and safer. Deluxe scissor jacks make levelling your trailer quick and easy.

**THOR'S**  
**“2+2” WARRANTY**  
 2 year limited structural warranty  
 and 2 years on major components  
*The best protection in the RV Industry!*  
*See your dealer for all the details.*

Your Local Dealer



This brochure is printed on recycled paper as part of Thor's corporate effort to minimize waste and conserve our natural resources. We know you will join us in this effort to maintain North America's great outdoors. For who appreciates the natural beauty of our open spaces more than an RVer?



**THOR**  
 AMERICA'S BEST RV VALUE

**Four Winds**  
 305 Steury Ave • Goshen, IN 46526  
**219-534-1224**