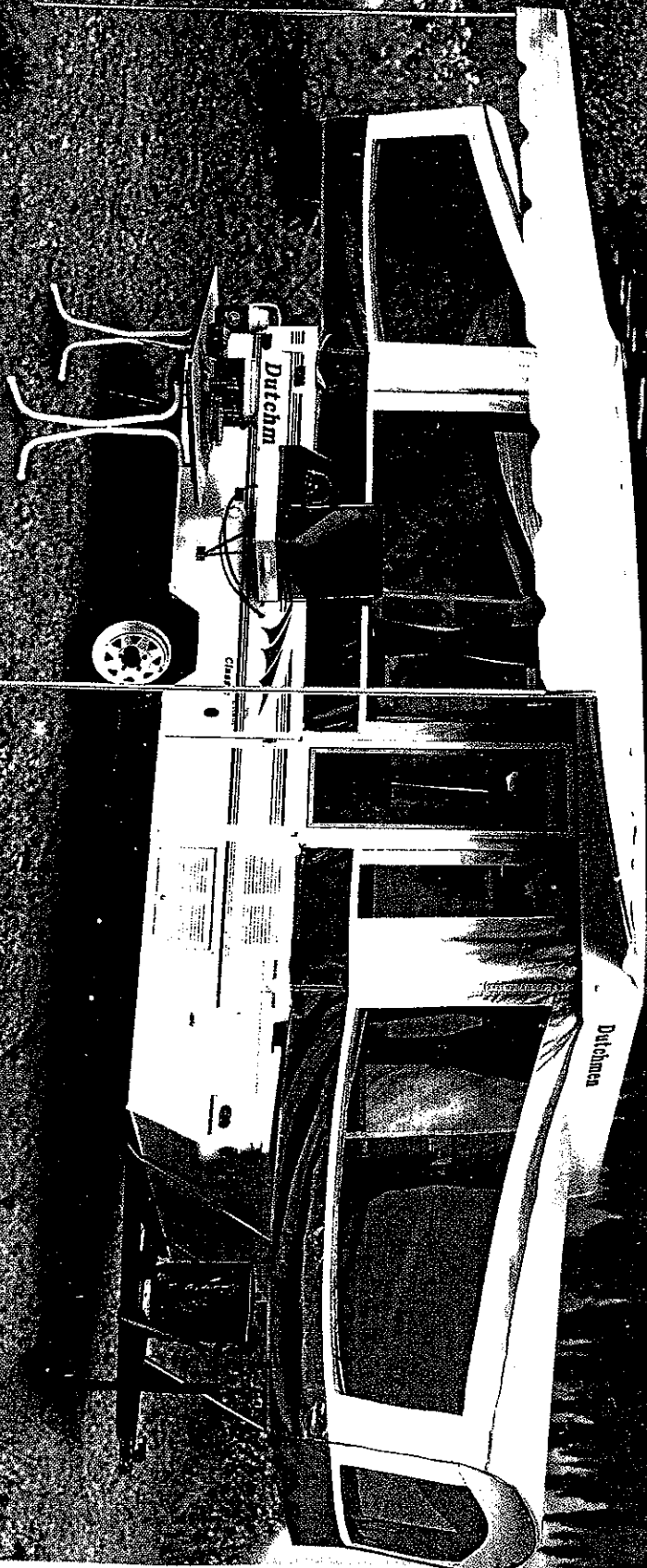


# Dutchmen

*& Classic*



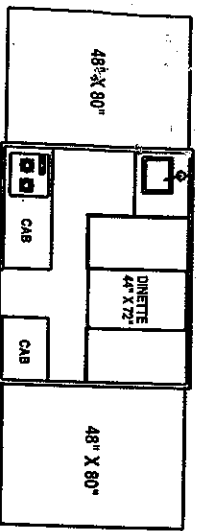
1999

# There is simply no finer camper than a Dutchmen.

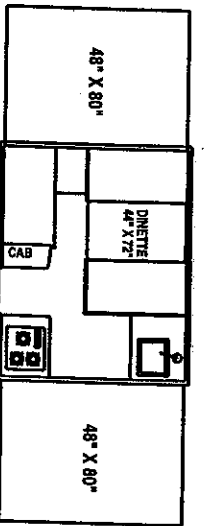


Right from the start, Dutchmen fold-downs have been the first choice of campers who want more: more quality features, more durability, and more value for their RV investment. And that's what Dutchmen has always delivered. Take a good, hard look at a Dutchmen camper, and you'll agree. And Dutchmen offers you one more advantage: your new Dutchmen camper is backed by Thor Industries, the second largest builder of RVs in North America. Thor's strong financial condition and years of uninterrupted growth are your assurance that we will be here to serve you for years to come. We think this extra "peace of mind" is important when you're making your RV investment.

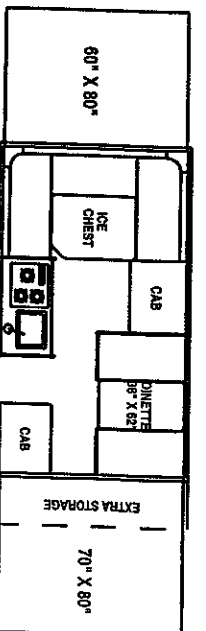
The strength and durability of Dutchmen campers is easy to see. If a Dutchmen can handle this kind of load, it can take just about anything your family can deliver.



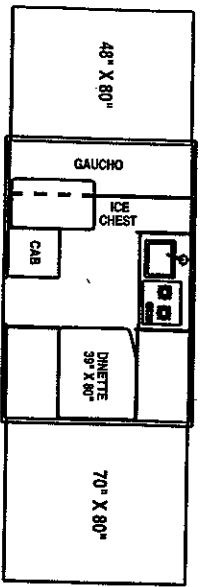
801D DUTCHMEN



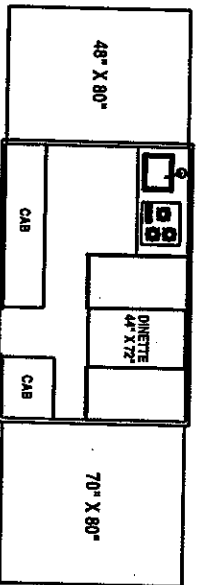
803 CLASSIC



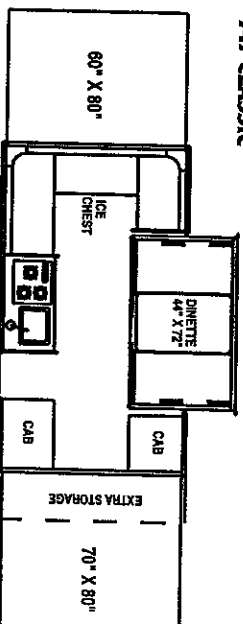
747 CLASSIC



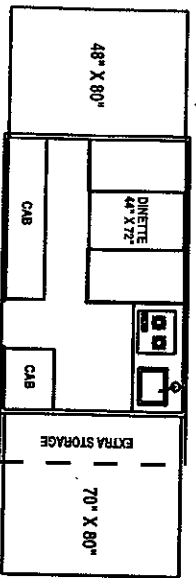
1004D DUTCHMEN



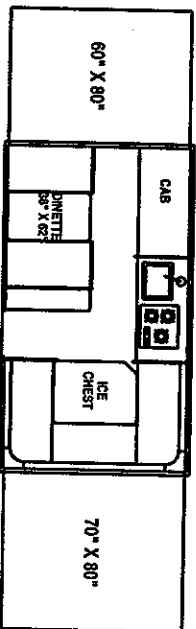
1001 CLASSIC



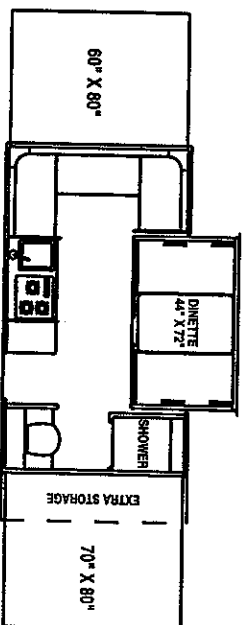
747SL CLASSIC



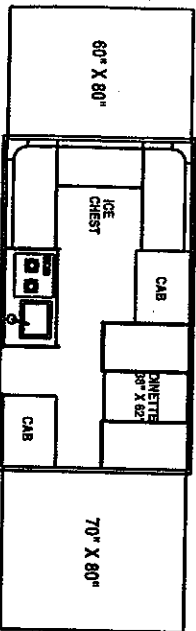
1006XSD DUTCHMEN



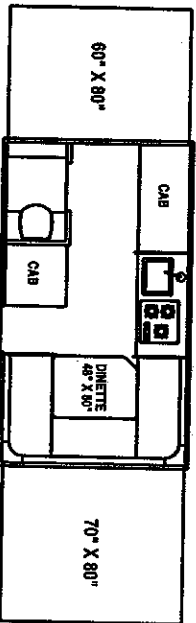
1203 CLASSIC



1207SSL CLASSIC



1205D DUTCHMEN

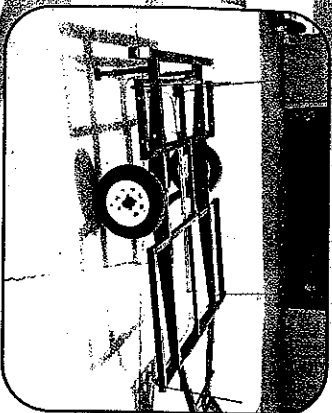


1204 CLASSIC

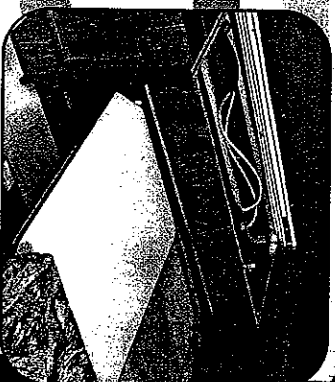
1999 Models	DUTCHMEN MODELS							CLASSIC MODELS				
	801D	1004D	1006XSD	1205D	803	1001	1203	1204	747	747SL	1207SSL	
Interior Length Open	17' 6"	21' 0"	21' 0"	24' 0"	17' 6"	21' 0"	24' 0"	24' 0"	24' 0"	24' 0"	24' 0"	
Interior Width	6' 8"	6' 8"	6' 8"	6' 8"	6' 8"	6' 8"	6' 8"	6' 8"	6' 8"	6' 8"	6' 8"	
Interior Height Open	6' 7"	6' 7"	6' 7"	6' 7"	6' 7"	6' 7"	6' 7"	6' 7"	6' 7"	6' 7"	6' 7"	
Height Closed	4' 4"	4' 4"	4' 4"	4' 4"	4' 4"	4' 6"	4' 6"	4' 6"	4' 6"	4' 6"	4' 6"	
Sleeping Capacity	6	8	6	8	6	8	6	8	8	8	7	
Trailer Size Closed	12'6" x 7'1"	14' x 7'1"	16' x 7'1"	16' x 7'1"	12'6" x 7'1"	14' x 7'1"	16' x 7'1"	16' x 7'1"	18' x 7'1"	18' x 7'1"	18' x 7'1"	
Dry Weight—Axle (Approx)	1,196	1,346	1,513	1,561	1,256	1,424	1,565	1,717	1,950	2,120	1,996	
Dry Weight—Hitch (Approx)	160	250	170	240	200	220	250	240	130	160	160	
Total Weight (Approx)	1,356	1,596	1,683	1,801	1,456	1,644	1,835	1,957	2,080	2,280	2,156	
GVWR	1,999	1,999	2,280	2,330	1,999	1,999	2,500	2,500	2,700	2,750	2,750	
Carrying Capacity	643	403	577	529	543	355	665	543	620	470	594	

WARRANTY

# Features

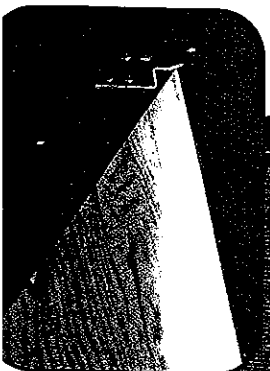


Superior strength and towability. Wide-track torsion axle gives you superior strength and towability.



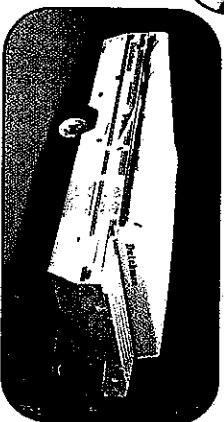
Dutchman's fold-down galley drops easily into position to leave aisle space free for storage when the camper is closed.

3/4" exterior-grade plywood bunk ends with full perimeter flanges prevent warping and allow easy set-up without blinding.



Roof-load bars provide extra strength to the roof, secure support for an air conditioner and protect from damage by heavy snow during winter storage.

The 60-quart (35lb) ice chest keeps beverages and food items cold and fresh.



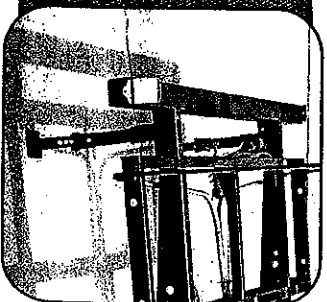
One-piece fiberglass sidewalls resist scratching and marring far better than conventional aluminum; the seamless one-piece fiberglass roof is light yet strong and leak-proof.



Dual-roller cabinet latches are the highest quality in the industry, and keep cabinet doors securely closed.



Cavalier-15® sectionalized tent is beautiful and durable with superior stain-resistance.



Front and rear stabilizing jacks allow for easy leveling and increased comfort and safety.