

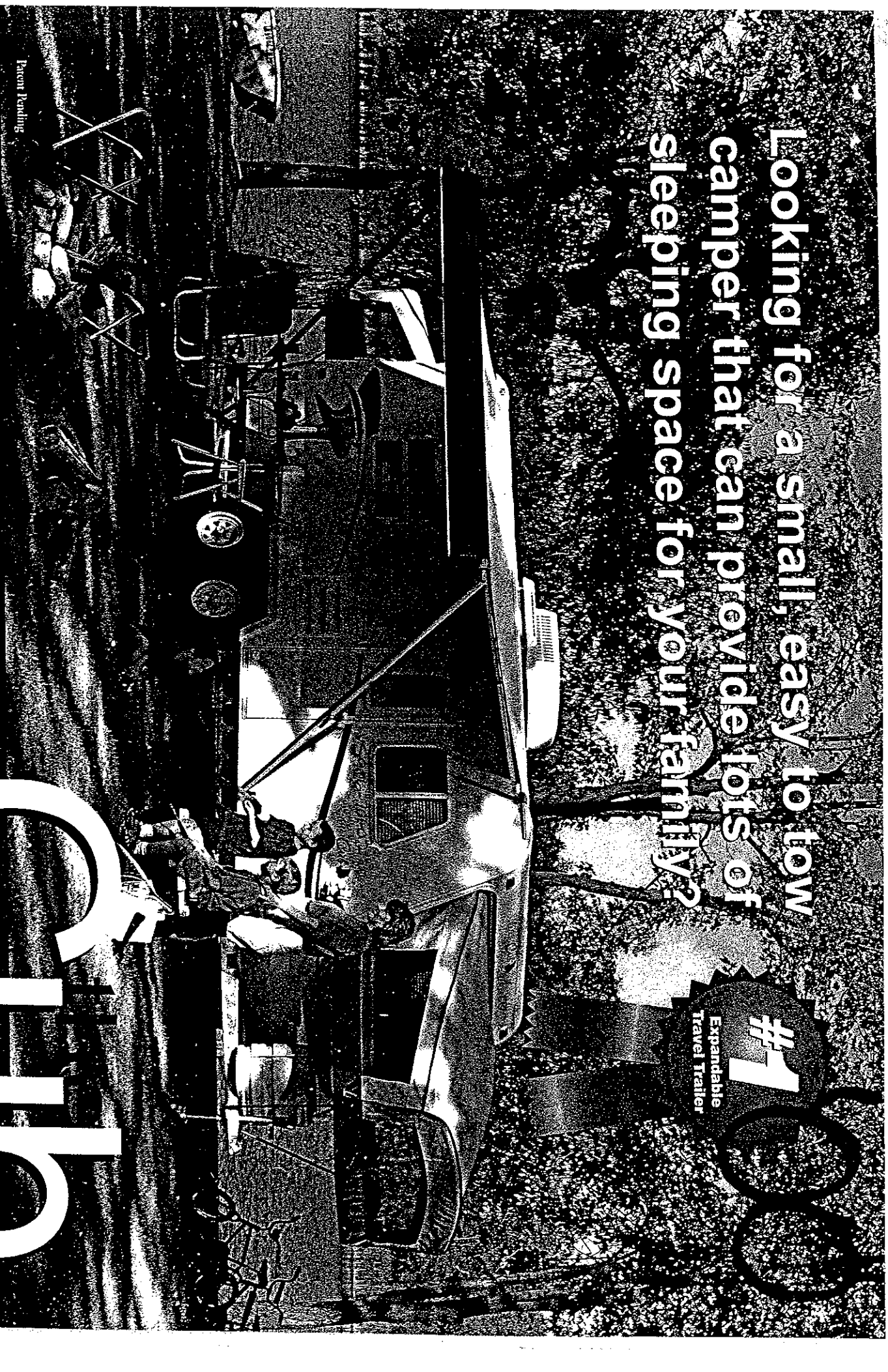
Looking for a small, easy to tow  
camper that can provide lots of  
sleeping space for your family?

**#1**  
Expandable  
Travel Trailer

Patent Pending

Look no Further!

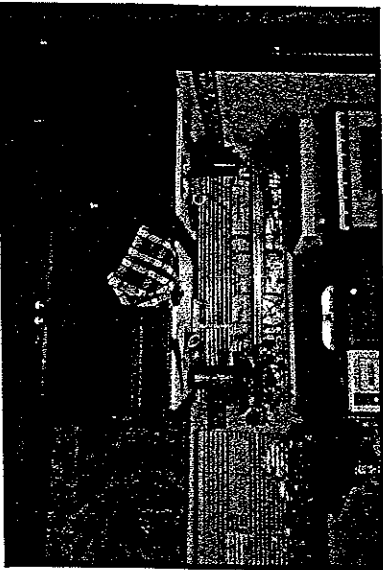
**Cub**<sup>®</sup>





*Inside, the Cab gives you all of the appliances and built-in beds you'd expect in a trailer, plus the advantages of fold-down beds for even greater roominess.*

*The Cab's galley can be equipped with an available oven and microwave for even greater flexibility and convenience.*



# Features & Options

## Floorplans

### Exterior/Construction

- 10" electric brakes
- Radial tires
- AL-KO™ Kober galvanized chassis
- AL-KO™ independent torsion suspension
- Key lock bunk ends
- Filon® fiberglass exterior finish
- Abundant exterior storage
- Automotive D-seal windows
- Laminated floor, roof & walls w/aluminum frame (5 year structural warranty)
- Corrosion free laminated Darco underbody
- Vinyl one piece roof (12 year warranty)
- Cawlar - 15 tent (5 year warranty)
- Seamless polyethylene wheel wells
- Standard stabilizer jacks - 4 (2 only on F-16)
- Radius front & rear bunk doors with large drip rails

### Appliances/Equipment

- 20,000 BTU furnace/ducted heat
- 6 gal. LP gas water heater
- Copper gas lines
- Domestic 5 cubic foot refrigerator in 19, 21 & 23
- High rise kitchen sink faucet
- 2 - 20# LP bottles with ABS cover
- Water Heater bypass kit
- LP leak detector
- Fire extinguisher

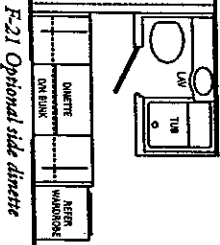
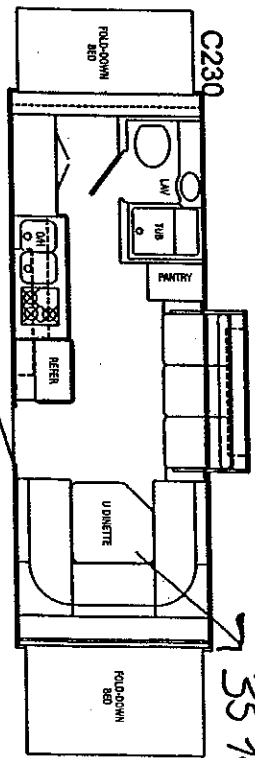
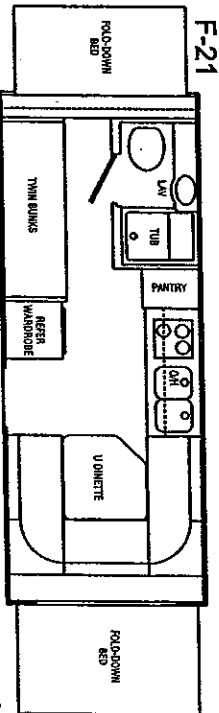
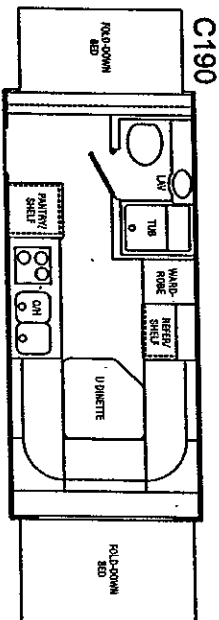
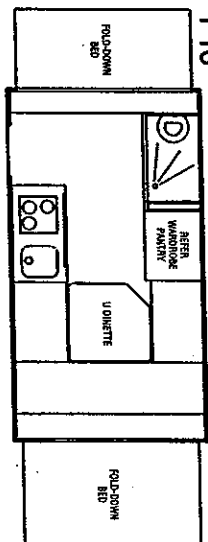
### Interior

- 14"x14" power vent in bath
- 14"x14" roof vent
- Grade #1 linoleum
- High pressure laminated counter tops
- Mini blinds with valance treatment
- Oak mortise & tenon cabinet doors
- Snap secured tents
- Arched tent supports
- Standard bunk lights
- Heavy duty woven fabrics
- Safety cable on front & rear bunks
- Pantry

### Options

- 13.5 A/C
- 7.1 A/C
- Stereo Prep
- AM/FM Cassette
- AM/FM CD
- Microwave
- Oven
- Spare Tire
- TV Antenna
- Awning
- CSA
- Monitor Panel
- Indoor/Outdoor Cook Top
- Side dinette w/fold down bunk (F21)
- Safety glass
- Outside shower
- Front jacks (16' only)
- Bed lights w/fans (2)

Club Specifications	F-16	C190	F-21	C230
GVWR	2860 lbs.	3835 lbs.	4145 lbs.	4300 lbs.
UVW	2018 lbs.	2688 lbs.	2808 lbs.	3168 lbs.
NCC	842 lbs.	1147 lbs.	1397 lbs.	1132 lbs.
Hitch Weight	140 lbs.	280 lbs.	400 lbs.	340 lbs.
Traveling Length	16'	19'	21'	23'
Open Living Length	19' 6"	22' 6"	24' 6"	26' 6"
Exterior Width	7' 1"	7' 1"	7' 1"	7' 1"
Exterior Height *	8' 1"	8' 1"	8' 1"	8' 1"
Fresh Water	25 gal.	25 gal.	25 gal.	25 gal.
Grey Water	25 gal.	25 gal.	25 gal.	25 gal.
Black Water	25 gal.	25 gal.	25 gal.	25 gal.
* without optional A/C				



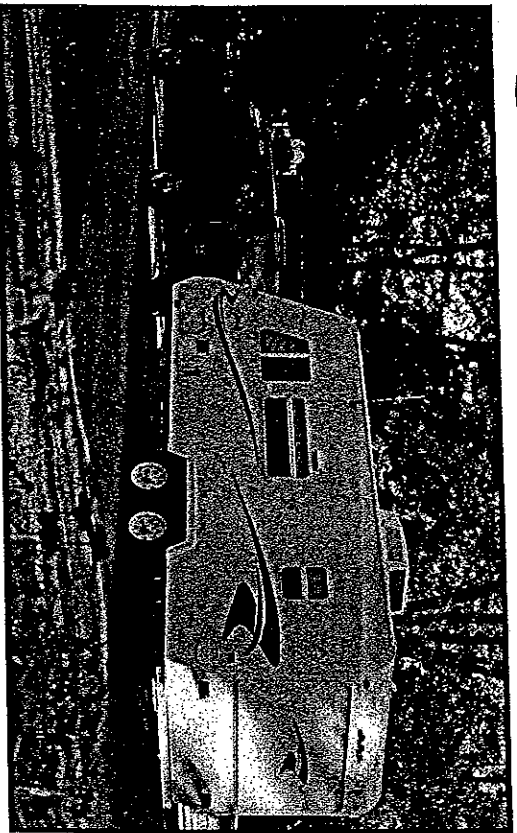
35 3/4 x 35 3/4

Product information, specifications, and photography in this brochure were as accurate as possible at time of printing. Photographs may contain some features that are optional on your vehicle. Since we continually strive to improve our products, actual products may differ. Prices and specifications are subject to change without notice. All capacities are approximate and dimensions are nominal. Some features or options may be different or unavailable in Canada. Vehicle Loading - Every effort has been made to provide the greatest number of options for the recreation vehicle owner. Along with these choices comes the responsibility to manage the loads that are imposed by the choices so that they remain within the manufacturer's specified chassis weight limits. Do not overload the recreation vehicle.

Dry weights based on standard features; optional equipment not included. Net carrying capacity (NCC) determined by subtracting unloaded vehicle weight (UVW) from gross vehicle weight (GVWR) and includes fluids, options, and cargo. Liquid capacities and weights are approximate.

**Warning:** This information is intended as a guide only. Weight of individual vehicles may vary. Consult your owner's manual for complete loading, weighing, and towing instructions.

# Cub



Thor Industries, Inc., proudly traces its history back nearly seventy years to the pioneering days of the RV industry with the founding of Airstream, the industry's oldest and most renowned brand. Our total commitment to quality and our philosophy of putting our customers first has led to our continuous growth. Today Thor is the second largest builder of RVs in North America. Thor's strong financial condition and years of solid growth are your assurance that we will be here to serve you for years to come. We think this extra peace of mind is important when you are making a significant investment. Because we are #2, we work harder than other manufacturers to satisfy you. Our customers are always #1 with us.



## Aero Manufacturing, Inc.

925 W. Brooklyn St., Syracuse, IN 46567  
 WWW.AERO-TV.COM

### Compare Before You Buy

	Cub	Brand X
AL-KO™ - galvanized steel chassis	Std	
AL-KO™ - independent torsion suspension	Std	
Cavlar - 15 oz. tent 5 year warranty	Std	
Stabilizer jacks	Std	
Ducted heating system	Std	
Large rain gutter	Std	
Vinyl roof 12 year warranty	Std	
Mini blinds with valance treatment	Std	
Radius front & rear bunks with large drip rail	Std	
Key locked front & rear bunk (security)	Std	
Arched tent supports for additional headroom	Std	
3 - exterior storage doors	Std	
Safety cable on front bunk & rear bunk	Std	
Snap secured tent	Std	
5 cubic foot refrigerator in 19, 21 & 23	Std	
Separate shower & stool in 19, 21 & 23	Std	
ABS LP bottle cover	Std	
High neck faucet	Std	
Compression windows with automotive D-seal	Std	
5 year Structural warranty	Std	
Non-corrosive laminated underbelly	Std	
Water heater bypass	Std	

**Warranties\***  
 5 years - Structure  
 5 years - Tent  
 2 years - Appliances

**Thor's Exclusive 2-Year Comprehensive Standard Warranty:**  
 2-year limited structural warranty and 2 years on major components. The best protection in the RV industry - by far!



\* See complete warranty for details.  
 This brochure is printed on recycled paper as part of Thor's corporate effort to minimize waste and conserve our natural resources. Providing safe, fuel-efficient recreational vehicles is Thor's way of further demonstrating our role as the industry leader in safeguarding our nation's environment.

*CLW*