

THE ORIGINAL

*Aerolite*

*8' Wide  
5th Wheel*



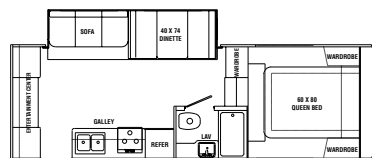
Surround  
yourself with  
nature's  
splendor in  
your very own  
luxury suite.



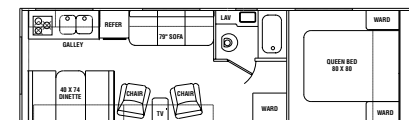
THE ORIGINAL  
**Aerolite** 8' Wide  
 5th Wheel



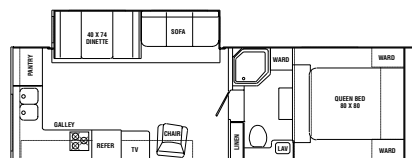
## Floor plans



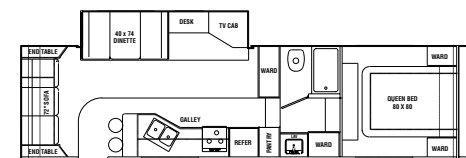
8524RLSS



8527RK



8527RKSS



8530RLSS (new)

## Weight Chart

|                      | 8524RLSS   | 8527RK     | 8527RKSS   | 8530RLSS   |
|----------------------|------------|------------|------------|------------|
| GVWR                 | 7000 lbs.  | 6400 lbs.  | 7000 lbs.  | 9000 lbs.  |
| Gross Dry Weight     | 5673 lbs.  | 4603 lbs.  | 5633 lbs.  | 6253 lbs.  |
| Carrying Capacity    | 1327 lbs.  | 1797 lbs.  | 1367 lbs.  | 2747 lbs.  |
| Dry Hitch Weight     | 720 lbs.   | 770 lbs.   | 950 lbs.   | 1180 lbs.  |
| GAWR                 | 7000 lbs.  | 5720 lbs.  | 7000 lbs.  | 10160 lbs. |
| Length               | 24' 9"     | 27' 3"     | 28' 5"     | 31' 1"     |
| Width                | 8'         | 8'         | 8'         | 8'         |
| Height               | 9' 10"     | 9' 5"      | 9' 10"     | 9' 10"     |
| Fresh Water          | 30 gal.    | 30 gal.    | 30 gal.    | 30 gal.    |
| Gray Water           | 36 gal.    | 36 gal.    | 72 gal.    | 36 gal.    |
| Black Water          | 36 gal.    | 36 gal.    | 36 gal.    | 36 gal.    |
| LPG Capacity (2)     | 30 lbs.    | 30 lbs.    | 30 lbs.    | 30 lbs.    |
| Radial Tire Size     | ST21575R14 | ST20575R14 | ST21575R14 | ST22575R15 |
| Optional Awning Size | 15'        | 17'        | 17'        | 17'        |

## Standard and Optional Features

### STANDARD FEATURES

- NEW Sub floor thermostatically controlled heated fresh water tank
- NEW Exterior graphics
- NEW European style ground effects
- NEW Residential grade linoleum
- NEW Mirrored overheads
- NEW 25% increase in overhead storage
- NEW Upgraded interior design and fabrics
- NEW High intensity interior lighting
- 10" electric brakes on all wheels
- ABS fender skirt w/ hidden fasteners
- Built in LP bottles w/ change over (30#)

- Filon fiberglass exterior skin w/2 year warranty
- Lamination construction in floor, roof & walls
- Locking battery storage compartment
- Royal tuff-ply vinyl roof system
- Corrosion free underbelly
- 30,000 BTU furnace
- High rise kitchen faucet w/ double bottom sink
- 3 burner range top
- LP leak detector
- Mini blinds
- Oak mortise and tenon cabinet doors
- Panoramic galley window
- Dometic refrigerators
- On demand water pump

- Power range hood w/ light
- Raised oak refer panel

### OPTIONAL EQUIPMENT

- NEW Raised panel cabinet doors
- NEW Water filtration system
- 3.5 A/C
- A & E Awning
- Roof rack & ladder
- Spare tire and carrier
- 6 gal. DSI water heater
- AM/FM Cassette w/4 speakers
- AM/FM CD w/4 speakers
- Stereo prep w/4 speakers
- TV antenna w/cable hookup
- Chair – some models
- Microwave

### "2 + 2" Warranty

Thor's Exclusive Full 2-Year Standard Warranty — We're so confident in the design and construction of our products that they are covered by Thor's exclusive Full 2-Year Standard Warranty: "hitch-to-bumper" coverage to protect your RV investment. The best protection in the RV industry - by far!



Aero Coach, Inc.

925 W. Brooklyn Street • Syracuse, IN 46567  
 219.457.8787 • www.aerocoachinc.com



This brochure is printed on recycled paper as part of Thor's corporate effort to minimize waste and conserve our natural resources. Providing safe, fuel-efficient recreational vehicles is Thor's way of further demonstrating our role as the industry leader in safeguarding our nation's environment.

