

2000



The First Family
of Fine Trailers
& Fifth Wheels

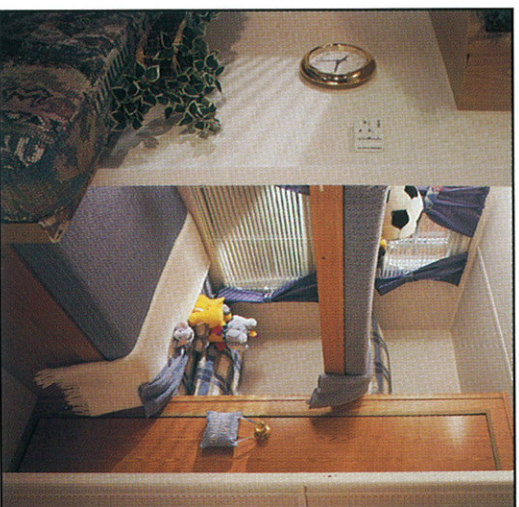
FOUR WINDS



Lite, Four Winds,
Laminate & Supreme
2000 models.

2000 LITES

The new Four Winds Lites are a great way to travel into the new millennium - perfect for those who want all the fun of RV travel without investing in a heavy-duty tow vehicle. Lites are specially designed for towing with many of today's most popular mini-vans and sport/utility vehicles, so you may already be driving the vehicle you need for towing. But you won't have to sacrifice comfort or convenience to get the Lite's towing advantage: Our Lites are built with the same quality materials and traditional craftsmanship as their bigger brothers, and include the same quality appliances and features, too. And with lengths up to 30 feet and sleeping capacities for up to eight, you'll never feel like you're in a lightweight.



Inside, Lites give you the advantages of Four Winds superior floorplan design. You won't have to give up comfort or convenience for lightweight towing: our Lites pack a lot of living into their smaller size. Kitchens are carefully planned to take maximum advantage of every inch of available space, living areas are designed and decorated for comfort, bedrooms are convenient, and bathrooms are full-sized and equipped with quality fixtures and appliances.



Mystery



Twilight Blue

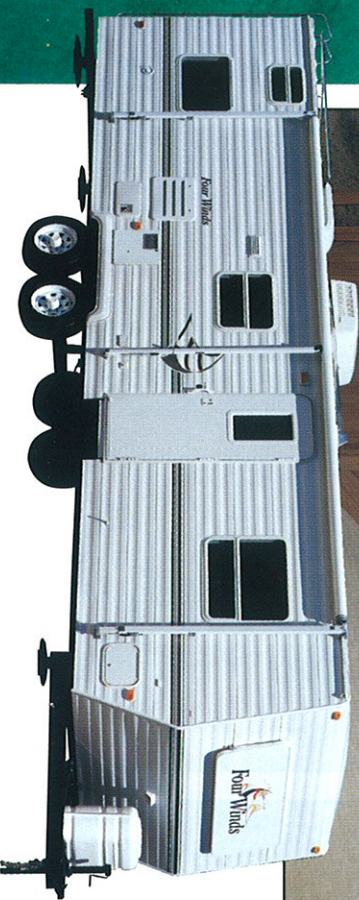


Aspen Green



Antique Taupe

2000 FOUR WINDS



Four Winds kitchens are spacious and convenient work areas, and all appliances in a Four Winds are of the highest quality. The large, double-door refrigerator and 3-burner range (with one high-intensity burner) will make meal preparation easy, so you can spend your time enjoying your new Four Winds.

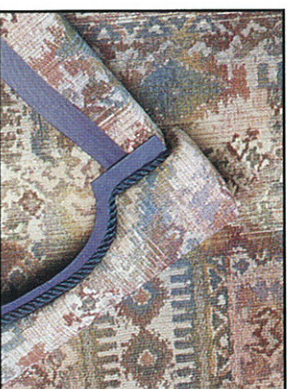
True classics in every sense, the Four Winds travel trailers and fifth wheels display all of the quality and value that have made the Four Winds such a legend. Enter a Four Winds and you enter a trailer designed to accommodate your every want and need. With superior design and construction, high-quality appliances, beautiful cabinetry, and stylish, luxurious fabrics and fine furniture, there is simply no other trailer that gives you so much for your investment.

Our years of experience and our constant attention to our customers have taught us what you most want in an RV, and we've put that knowledge into designing the finest selection of floorplans we've ever offered. So whether you choose a trailer or fifth wheel, standard or slide-out model, you'll find a Four Winds for 2000 that is just right for your family's lifestyle.





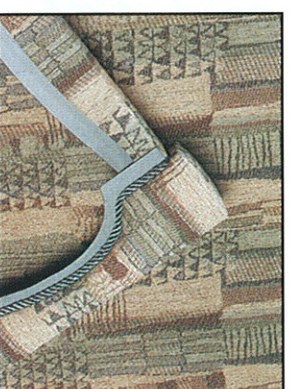
Sliding patio doors bring in lots of natural light and give your Four Winds a truly residential feeling.



Mystery



Twilight Blue



Aspen Green



Antique Taupe

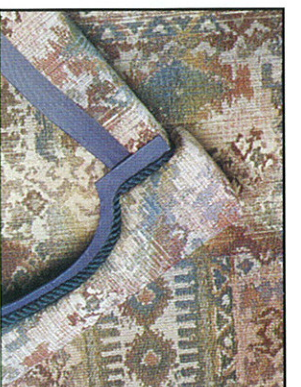
2000 FOUR WINDS LAMINATE



They're here! The Four Winds Laminated trailers and fifth wheels. Quite simply the most exciting vehicles we've ever offered, the Four Winds Laminates combine all of the value that's built into the Four Winds line with the advantages of fiberglass laminated construction. Our thermo-compression, fully laminated sidewall construction gives these trailers superior strength and durability, while also making them easier to clean and maintain. Inside, you'll enjoy the same great floorplan design and features of the Four Winds so if you want the best of both worlds for 2000, you want the Four Winds Laminates.

A Four Winds Laminates trailer is beautiful on the outside, and even more so on the inside, with the stylish, luxurious furniture and fabric treatments that make Four Winds trailers such a hit.





Mystery



Twilight Blue



Aspen Green



Antique Taupe



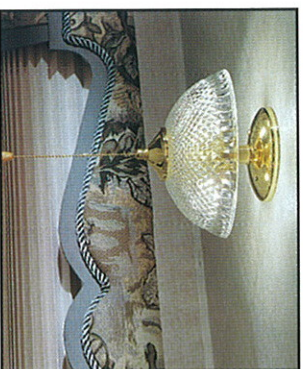
The storage underneath the bed is spacious and is accessible from the outside on most models.

2000 SUPREME

8



Quite simply the finest vehicle we've ever built, the Four Winds Supreme carries the Four Winds name to a new, higher level of excellence. The laminated sidewalls are, of course, strong and easy to maintain, while aluminum framing gives it even greater strength without adding excess weight. Add the Supreme's white-finished entry door and window trim, stylish graphics, and you have a trailer or fifth wheel you can be proud of for years to come. Inside, we've loaded the Supreme with all the standard features you could possibly want and our finest fabrics and comfort features, as well. The Supreme - truly the vehicle that will set standards for a long time to come.



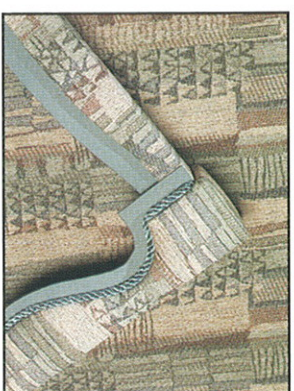
Supremes are fitted out with lots of extra touches, like these light fixtures, that make them feel just like home.



Mystery



Twilight Blue



Aspen Green



Antique Taupe

STANDARD FEATURES

At the core of every Four Winds trailer and fifth wheel lies this outstanding collection of great features

Exterior

- 30" Radius entry door (most floorplans)
- AM/FM stereo/cassette
- Easy-to-use 9" triple step at main entry door on all large slide-out models
- Easy-to-use double steps at main door on all non-slide trailers
- Hitch light (travel trailers)
- New exterior graphics
- Patio light
- Radius exterior storage (where possible)
- Rain gutter w/ corner downspout along the roof line
- Sleek new front flush mount combination window and rock guard awning (lites only)
- Tandem axle w/ 4 wheel electric brakes
- Tinted radius clamp ring windows
- Wired for digital satellite system
- A&E Color Coordinated Awning (STD, Four Winds, Laminate, Supreme)

Interior

- Baltic birch wood drawer sides
- Bar stools standard with all breakfast countertops as pictured in the brochure
- Bedroom TV flip up tray w/ wire
- Black oven w/ built-in safety glass
- Cable-ready TV hook-up
- Color coordinated bedspread
- Easy clean bath tub wall surround
- Easy clean linoleum entry area
- Hinged dinette seat bases
- Large bedroom mirrored cabinet doors
- Large residential-size stainless kitchen sink
- Microwave (STD, Four Winds, Laminate, Supreme)

Interior

- Marine toilet
- No-bend composite floor registers
- Queen bed w/ reinforced bed base and gas lifts (where applicable)
- Shower curtain
- Silverware drawer
- Solid oak knife holder behind the range
- Spice rack
- Swivel rocker (where applicable)
- Wallpaper borders in galley
- Wooden towel racks on all bath doors

Systems

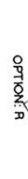
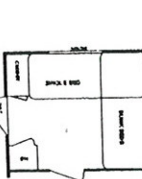
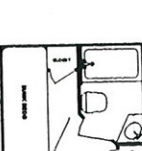
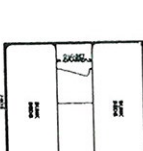
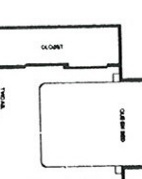
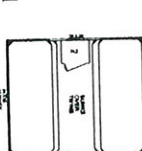
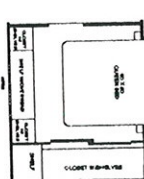
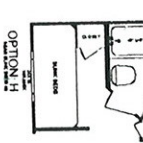
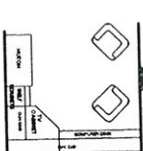
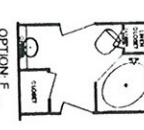
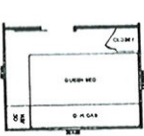
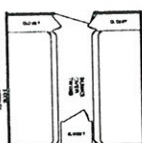
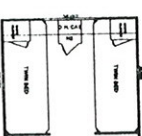
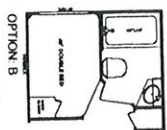
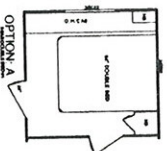
- 20# LP gas bottles (lites only)
- 30# LP gas bottles (Std, Four Winds, Laminate, Supreme)
- 45-amp converter
- 6-gallon gas/electric water heater w/ autoreignite and adjustable thermostat
- Ceiling ducted air on all models (25' & up)
- Ground fault interrupter
- Hydro-flame furnace
- LP gas leak detector
- Monitor panel
- Power cord w/ hatch
- Power roof vent in bath
- Smoke detector
- Water heater by-pass system
- Winegard® TV antenna w/ swivel mount
- Domestic 13.5 BTU Air conditioner (STD, Four Winds, Laminate)

Construction

- 2 Year Hitch to Bumper warranty (See owner's manual for details)
- Laminated one piece Weyerhaeuser Structurwood floor decking (Laminates and Supremes)
- 36" wood roof decking full length of coach
- 5" truss roof rafter system with 3" grade
- 56" tongue & groove plywood floor (lites and Four Winds)
- Adjustable ceiling vents with ducted air conditioning
- Butyl rubber (no putty tape or foam seals) around all exterior windows, entry doors, compartment doors, lights, roof fixtures, and S-lock aluminum seams
- Dior Corp Britc-ply seamless EPDM roof covering with fire retardant backing and 12-year warranty
- Double seals with silicone sealant applied over Butyl rubber seals at corners and over windows
- Frames are cambered
- Galvanized steel straps around construction perimeter, tying roof to sidewall to floor
- Large support outriggers with solid continuous weld

Upgrade options

- 6-gallon gas/electric DSI water heater
- microwave (lites)
- A&E color coordinated awning (lites)
- Bedroom carpet & pad
- Bedroom slide-outs (some models)
- Bi-fold shower door (Std, Supreme)
- CD player (Std, Supreme)
- Ceiling fans (30' fifth wheels and up only)
- Domestic 13.5 BTU air conditioner (lites)
- Double door refrigerator (lites)
- Fan-tastic fan with rain sensor and wall thermostat
- Front & rear stabilizer jacks (TT)
- Rear stabilizer jacks (FW)
- Hide-a-bed sofa
- Outside shower
- Phone jacks (Std, Supreme)
- Power tongue jack (TT)
- Recliner
- Reese Trail Boss 15M swivel head fifth wheel hitch and rails
- Roof rack & ladder
- Safety glass
- Sink cover (lites)
- Skylight over tub (Std, Supreme)
- Solid oak cabinet doors throughout (Std, Supreme)
- Solid oak free-standing table w/ 2 or 4 chairs
- Spare tire kit w/ cover
- Stove cover (lites)



Four Winds Life model-specific features

- 1 1/2" x 2" walls on 16" centers with 2" belt rail
- 20-25M/BTU Hydro-flame furnace
- 5 cu. ft. Norcold® single door refrigerator
- 3-burner cook-top
- 14" radial tires
- Galvanized steel wheel wells
- Welded conventional steel bumper
- 3500# straight axles on all models
- Mini blinds
- Full walk on roof with 3/8" wood roof decking and 5" truss roof rafter system
- Full tub surround
- 45-amp converter
- AM/FM stereo
- Cable TV hook-up
- Pre-wired for digital satellite system
- Tinted radius clamp ring windows for the ultimate in UV protection

Four Winds model-specific features

- 31-35M BTU hydro-flame furnace



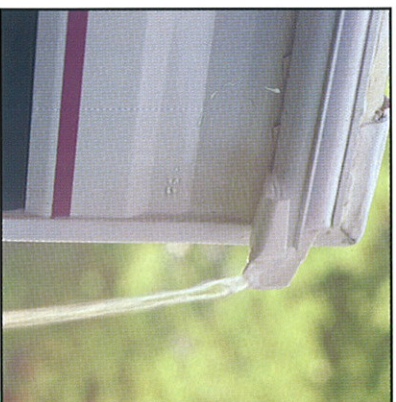
All Four Winds trailers and fifth wheels are equipped with a standard AM/FM cassette stereo with four speakers. This optional AM/FM compact disc player with equalizer will add even more musical enjoyment to your travels.

- 2" x 2" walls on 16" centers with 2" belt rail
- Norcold® gas/electric double door refrigerator w/adjustable thermostat
- Plotless 3-burner range/oven with high BTU output burner
- In-floor heat ducting
- 15" radial tires
- Mini-blinds
- Extra large cabinets in the bedroom & kitchen areas
- 8" I-beam frames on all slide-out units (except 38" TT-10" I-Beam)
- Rear bumper w/hidden sewer hose compartment
- Livingroom/Bedroom carpet with pad (one bedroom only)
- Sink cover
- Stove cover
- 14 cu. ft., 110 volt refrigerator (std on 33' and up TT)
- Thermo Pane patio doors (std on 33' and up TT)

Four Winds Classic Laminate model-specific features

Same great features as the Dutchmen Classic except:

- 2" fully laminated aluminum-framed side and end walls with polystyrene block foam insulation (R-7)
- Smooth Filon® Fiberglass exterior
- Track guided electric powered Flush Floor Slide-out system in livingroom slide

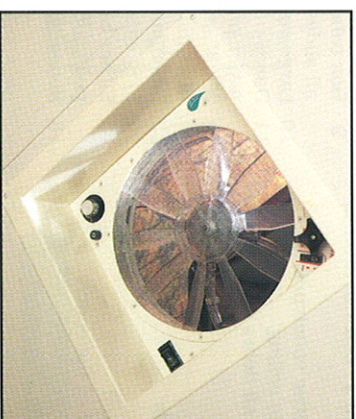


At Four Winds we pay attention to the details, like this rain gutter that channels water to the rear of the trailer for run-off away from the entry.

Four Winds Supreme model-specific features

Same great features as the Dutchmen Laminate except:

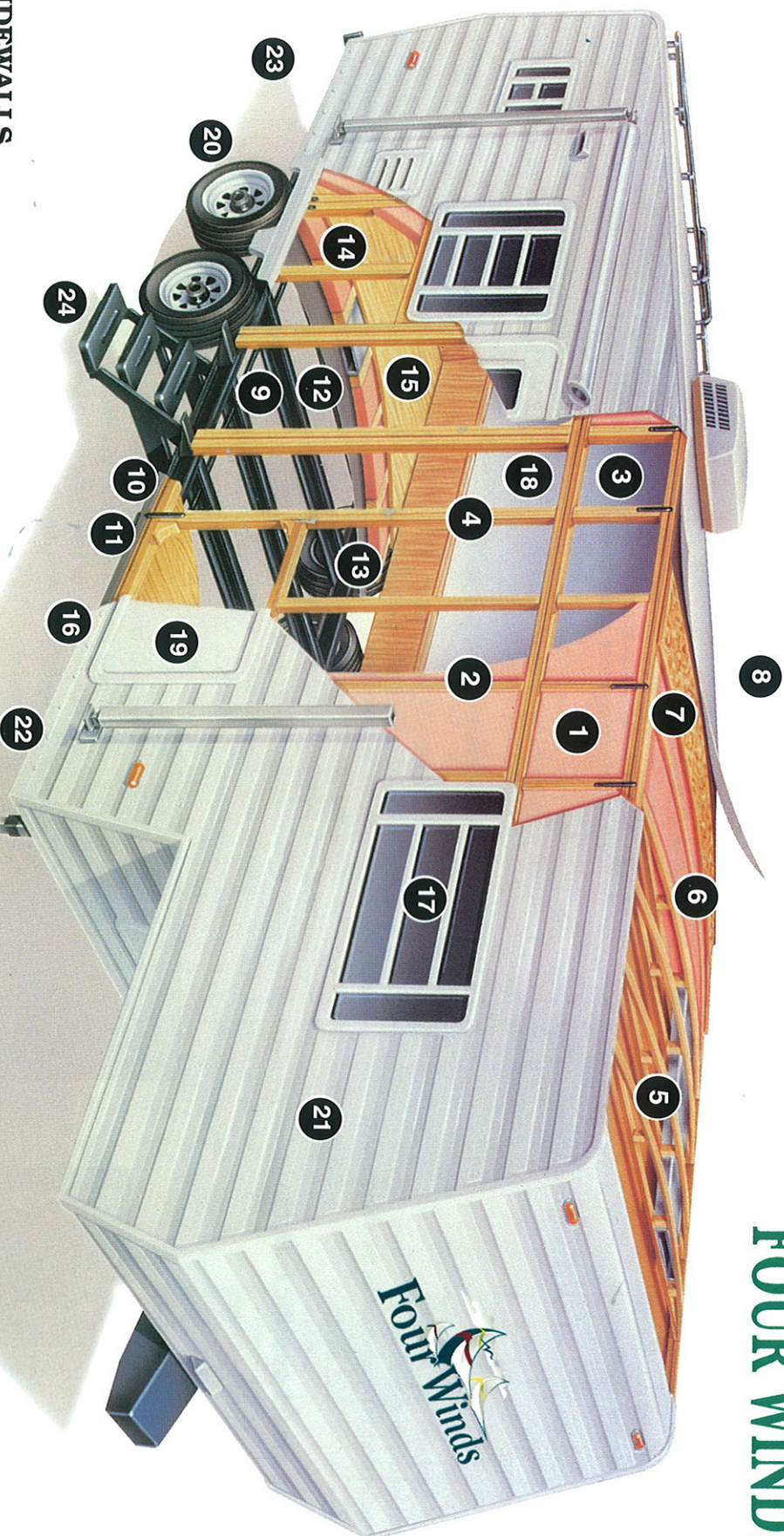
- Enclosed and insulated underbelly on 30" 5th wheels and up.
- 50 amp power converter
- Upgrade lighting package
- 15,000 BTU ducted A/C
- 7500 Series Radio/CD Player
- Raised Solid Oak Refer front (N/A on standard 33' and up TT)
- Phone Jack
- Unique Wheel Covers
- 12 Volt heating pad on all travel trailers and fifth wheels 24' - 27'.
- Skylight
- 6 gal. gas/elec. water heater w/DSI.
- Day/night shades.
- Bifold shower door.



Optional Fantastic Fan is equipped with special sensors which shut off the fan and lower the cover in the event of rain.

NO MATTER HOW YOU SLICE IT, IT'S PURE VALUE!

FOUR WINDS



SIDEWALLS

- 1 Fiberglass insulation—cut & fitted for full expansion
- 2 2"x 2" on 16" centers with an extra 2" belt rail around the perimeter for extra strength
- 3 Galvanized steel straps around entire construction perimeter—tying roof to sidewall to ceiling
- 4 Double or triple studding around all doors and windows

ROOF

- 5 Large 5" truss rafters with 3" grade for better water run off
- 6 Fiberglass Insulation—cut and fitted
- 7 3/8" wood roof decking full length of the coach
- 8 Dicor Corp. Brite-ply seamless EPDM roof covering w/fire retardent backing and 12-year warranty

FLOOR

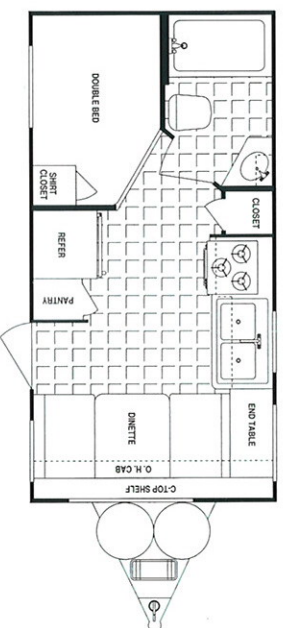
- 9 Box tube frame on all non-slides, I-beam frame on all slide-outs—canbered to prevent drooping
- 10 Large support outriggers w/solid continuous weld
- 11 Dacron underbelly wrapped around the floor for extra water protection
- 12 2"x 3" studs running lengthwise to allow for heat duct installation
- 13 Fiberglass insulation—cut & fitted
- 14 5/8" exterior grade tongue-&-groove plywood floor
- 15 Either high grade vinyl flooring or 300z. stain-resistant polypropylene carpet
- 16 Notice that the sidewall is placed on top of the floor

EXTERIOR

- 17 Extra large tinted, radius, jalousie clamp ring windows that are sealed with butyl rubber for one of the best watertight seals in the industry
- 18 30" radius entry door on most floorplans
- 19 Exterior storage wherever possible
- 20 Oversized radial tires
- 21 S-lock Mesa aluminum—.024
- 22 Bottom exterior aluminum attached with screws thru the side—water cannot be trapped, no staples to penetrate wood, or rust and fall out
- 23 Rear bumper w/hidden sewer hose compartment
- 24 Top quality—easy to use double or triple steps—Try them

FOUR WINDS LITE TRAVEL TRAILERS.

Sleeps	4
Awning Length (ft.)	12
Demand Water System (Gals.)	40
Dual Holding Tanks (Approx. Gals.)	60
Furnace (1000 BTUs)	20
Tires	ST205 75R14C

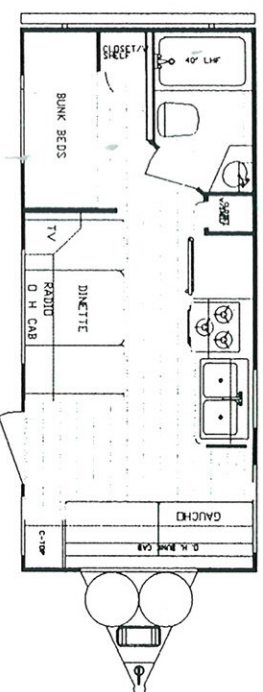


Opt. H, p Opt. Overhead Bunk Cabinet

Length	20.5"
Hitch Dry Weight	498
Axle Dry Weight	3,216
GVWR	7,498
UVW	3,714
NCC	3,784

19FD

Sleeps	6
Awning Length (ft.)	12
Demand Water System (Gals.)	40
Dual Holding Tanks (Approx. Gals.)	60
Furnace (1000 BTUs)	20
Tires	ST205 75R14C

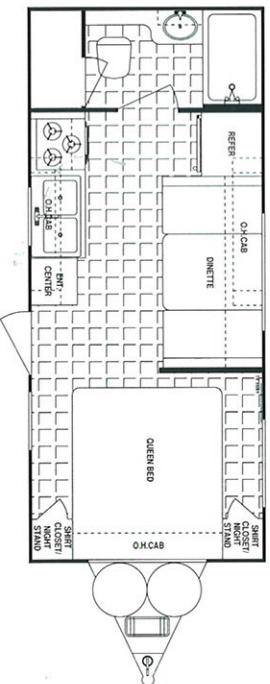


Opt. B, C

Length	23.5"
Hitch Dry Weight	582
Axle Dry Weight	3,480
GVWR	7,582
UVW	4,062
NCC	3,520

22BH

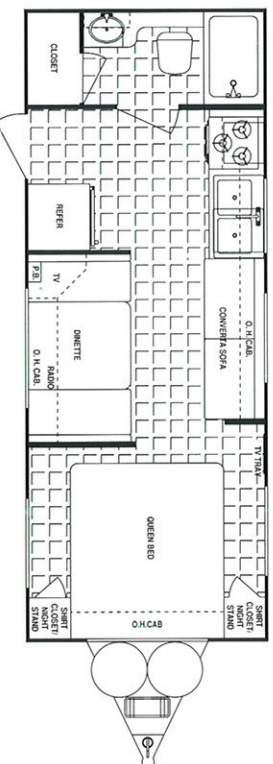
Sleeps	4
Awning Length (ft.)	12
Demand Water System (Gals.)	40
Dual Holding Tanks (Approx. Gals.)	60
Furnace (1000 BTUs)	20
Tires	ST205 75R14C



Length	23.5"
Hitch Dry Weight	466
Axle Dry Weight	3,662
GVWR	7,466
UVW	4,128
NCC	3,338

22QB

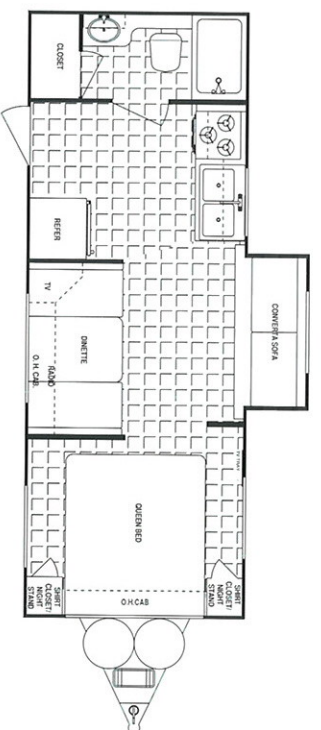
Sleeps	6
Awning Length (ft.)	16
Demand Water System (Gals.)	40
Dual Holding Tanks (Approx. Gals.)	60
Furnace (1000 BTUs)	20
Tires	ST205 75R14C



Length	25.5"
Hitch Dry Weight	432
Axle Dry Weight	4,000
GWR	7,432
UVW	4,432
NCC	3,000

24GB

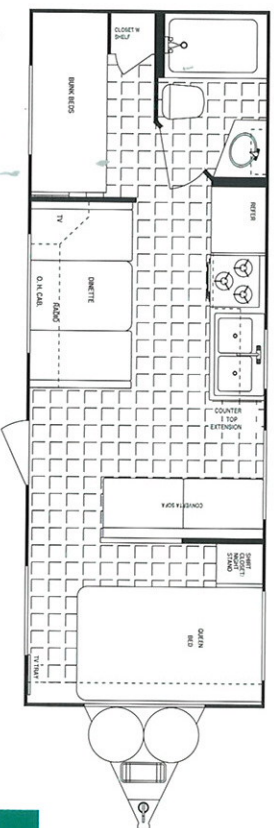
Sleeps 6
 Awning Length (ft.) 16
 Demand Water System (Gals.) 40
 Dual Holding Tanks (Approx. Gals.) 60
 Furnace (1000 BTUs) 25
 Tires ST205 75R14C



Length 26'5"
 Hitch Dry Weight 642
 Axle Dry Weight 4,170
 GVWR 7,642
 UVW 4,812
 NCC 2,830

24GB-SSL

Sleeps 8
 Awning Length (ft.) 18
 Demand Water System (Gals.) 40
 Dual Holding Tanks (Approx. Gals.) 60
 Furnace (1000 BTUs) 25
 Tires ST205 75R14C

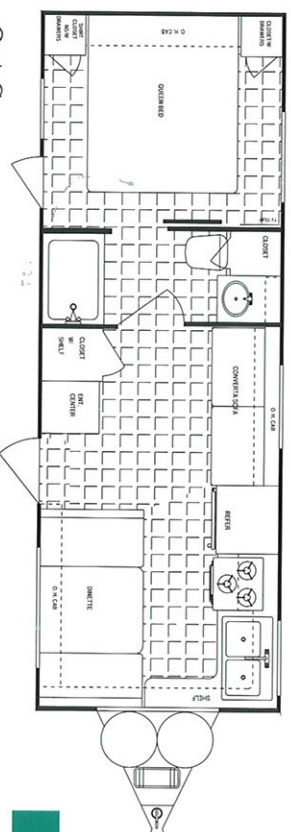


Length 27'5"
 Hitch Dry Weight 642
 Axle Dry Weight 4,130
 GVWR 7,642
 UVW 4,772
 NCC 2,870

26BH

Opt.B, P

Sleeps 6
 Awning Length (ft.) 21
 Demand Water System (Gals.) 40
 Dual Holding Tanks (Approx. Gals.) 60
 Furnace (1000 BTUs) 25
 Tires ST205 75R14C



Length 27'5"
 Hitch Dry Weight 804
 Axle Dry Weight 4,112
 GVWR 7,804
 UVW 4,916
 NCC 2,888

26FK

Opt.C

Sleeps 6
 Awning Length (ft.) 16
 Demand Water System (Gals.) 40
 Dual Holding Tanks (Approx. Gals.) 90
 Furnace (1000 BTUs) 25
 Tires ST205 75R14C

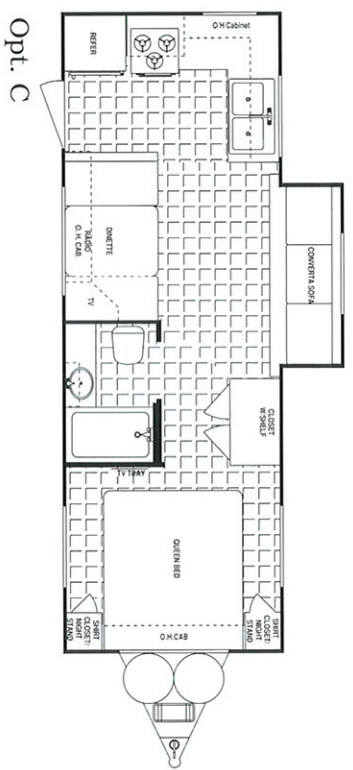


Length 27'5"
 Hitch Dry Weight 766
 Axle Dry Weight 4,076
 GVWR 7,766
 UVW 4,842
 NCC 2,924

26FL

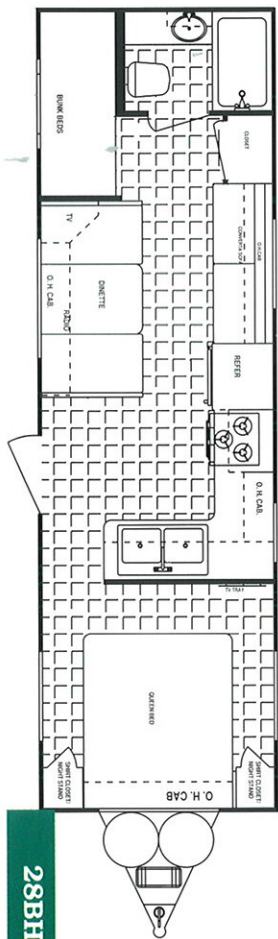
Opt.C, F Opt. Overhead Cabinet Bunk

Sleeps 6
 Awning Length (ft.) 16
 Demand Water System (Gals.) 40
 Dual Holding Tanks (Approx. Gals.) 90
 Furnace (1000 BTUs) 25
 Tires ST205 75R14C



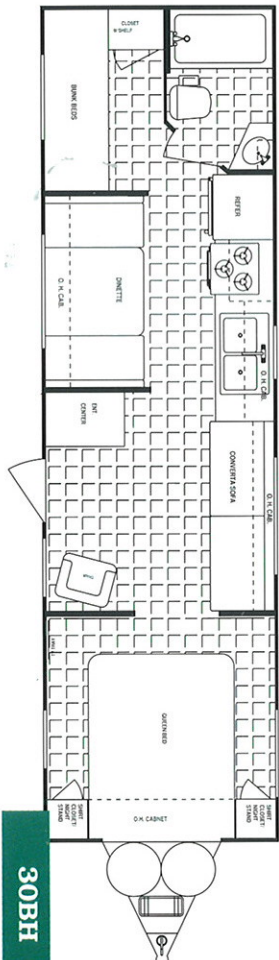
Length 27'5"
 Hitch Dry Weight 510
 Axle Dry Weight 4,632
 GVWR 7,510
 UVW 5,142
 NCC 2,368

Sleeps 8
 Awning Length (ft.) 18
 Demand Water System (Gals.) 40
 Dual Holding Tanks (Approx. Gals.) 60
 Furnace (1000 BTUs) 30
 Tires ST205 75R14C



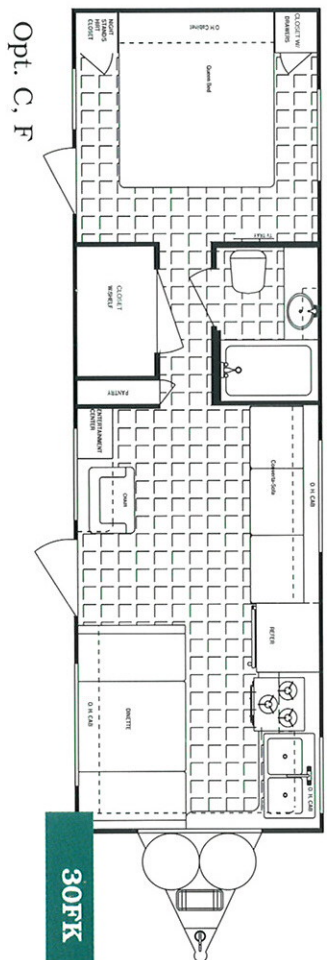
Length 29'5"
 Hitch Dry Weight 460
 Axle Dry Weight 4,580
 GVWR 7,460
 UVW 5,040
 NCC 2,420

Sleeps 8
 Awning Length (ft.) 21
 Demand Water System (Gals.) 40
 Dual Holding Tanks (Approx. Gals.) 60
 Furnace (1000 BTUs) 30
 Tires ST205 75R14C



Length 31'5"
 Hitch Dry Weight 518
 Axle Dry Weight 4,756
 GVWR 7,518
 UVW 5,274
 NCC 2,244

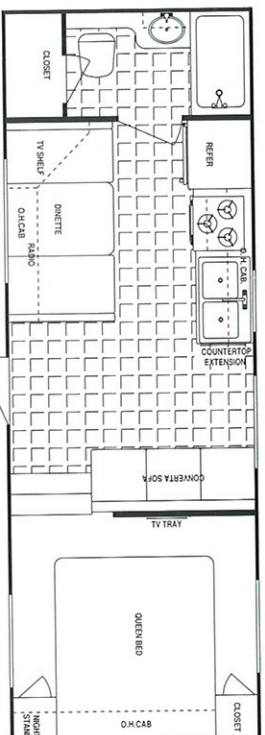
Sleeps 6
 Awning Length (ft.) 21
 Demand Water System (Gals.) 40
 Dual Holding Tanks (Approx. Gals.) 60
 Furnace (1000 BTUs) 30
 Tires ST205 75R14C



Length 31'5"
 Hitch Dry Weight 804
 Axle Dry Weight 4,422
 GVWR 7,804
 UVW 5,226
 NCC 2,578

FOUR WINDS LITE FIFTH WHEELS

Sleeps	6
Awning Length (ft.)	12
Demand Water System (Gals.)	40
Dual Holding Tanks (Approx. Gals.)	60
Furnace (1000 BTUs)	20
Tires	ST205 75R14C



Length	22'11"
Hitch Dry Weight	814
Axle Dry Weight	3,980
GVWR	7,814
UVW	4,794
NCC	3,020

22RB-M5

Opt. C. Mid-profile

Sleeps	6
Awning Length (ft.)	16
Demand Water System (Gals.)	40
Dual Holding Tanks (Approx. Gals.)	60
Furnace (1000 BTUs)	25
Tires	ST205 75R14C

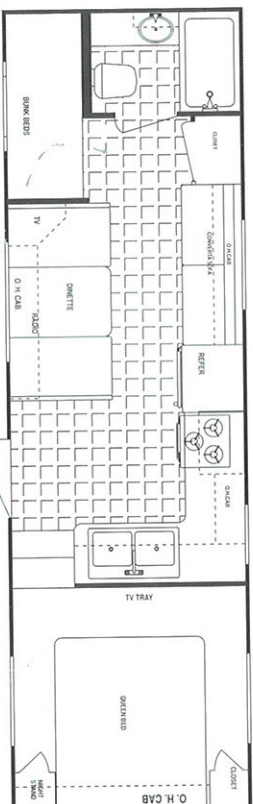


Length	24'11"
Hitch Dry Weight	878
Axle Dry Weight	4,300
GVWR	7,878
UVW	5,178
NCC	2,700

24RK-M5

Opt. C. Mid-profile

Sleeps	8
Awning Length (ft.)	18
Demand Water System (Gals.)	40
Dual Holding Tanks (Approx. Gals.)	60
Furnace (1000 BTUs)	25
Tires	ST205 75R14C

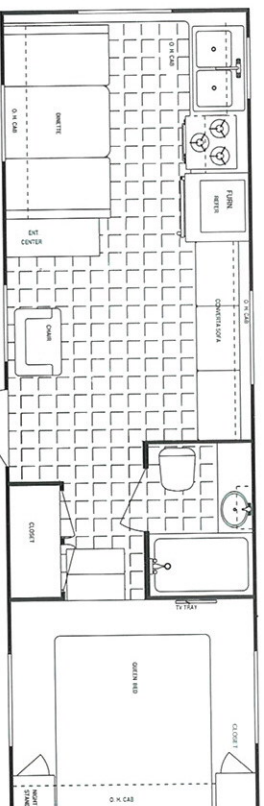


Length	26'11"
Hitch Dry Weight	1,032
Axle Dry Weight	4,434
GVWR	8,032
UVW	5,466
NCC	2,566

26BH-M5

Opt. C. Mid-profile

Sleeps	6
Awning Length (ft.)	16
Demand Water System (Gals.)	40
Dual Holding Tanks (Approx. Gals.)	60
Furnace (1000 BTUs)	25
Tires	ST205 75R14C

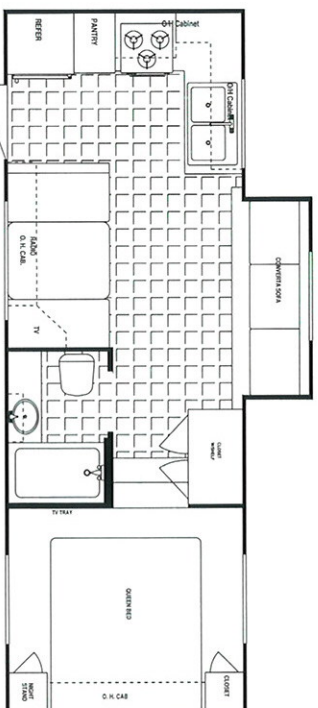


Length	26'11"
Hitch Dry Weight	894
Axle Dry Weight	4,668
GVWR	7,894
UVW	5,562
NCC	2,332

26RK2-M5

Opt. C. Mid-profile

Sleeps 6
 Awning Length (ft.) 16
 Demand Water System (Gals.) 40
 Dual Holding Tanks (Approx. Gals.) 60
 Furnace (1000 BTUs) 25
 Tires ST205 75R14C



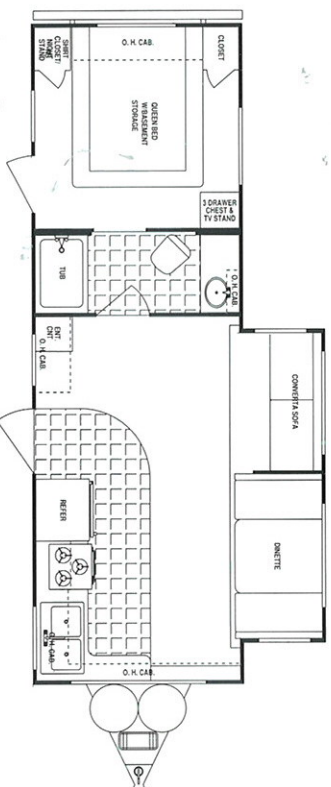
Opt. C. Mid-profile

25GB-M5-SSL

Length 25'5"
 Hitch Dry Weight 868
 Axle Dry Weight 4,662
 GVWR 7,868
 UVW 5,530
 NCC 2,338

FOUR WINDS / LAMINATE / SUPREME TRAVEL TRAILERS

Sleeps 6
 Awning Length (feet) 21
 Demand Water System (Gals.) 30
 Dual Holding Tanks (Approx. Gals.) 60
 Furnace (1000 BTUs) 31
 Tires ST205 75R15C



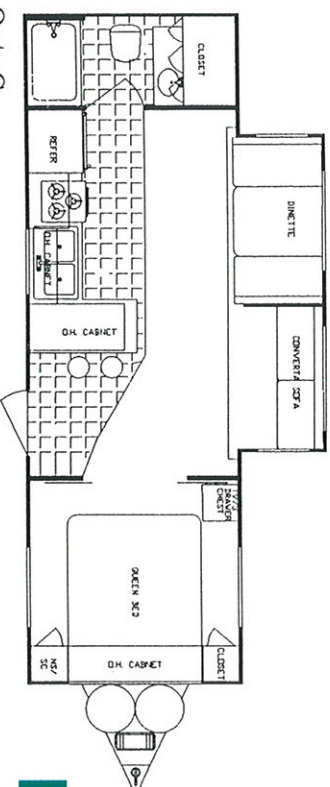
Opt. C.

27FK-DSL

Length 27'5"
 Hitch Dry Wt. 786
 Axle Dry Wt. 5,564
 GVWR 7,786
 UVW 6,350
 NCC 1,436

Four Laminate/
 Winds Supreme
 28'5" 28'6"

Sleeps 6
 Awning Length (ft.) 18
 Demand Water System (Gals.) 40
 Dual Holding Tanks (Approx. Gals.) 60
 Furnace (1000 BTUs) 31
 Tires ST205 75R15C

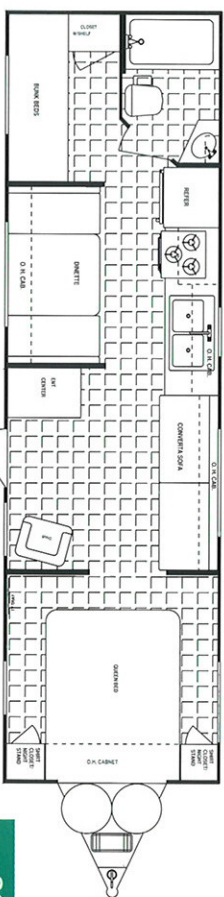


Opt. C.

28FB-DSL

Length 29'5"
 Hitch Dry Wt. 922
 Axle Dry Wt. 5,164
 GVWR 7,922
 UVW 6,086
 NCC 1,836

Sleeps 8
 Awning Length (feet) 21
 Demand Water System (Gals.) 40
 Dual Holding Tanks (Approx. Gals.) 60
 Furnace (1000 BTUs) 31
 Tires ST205 75R15C

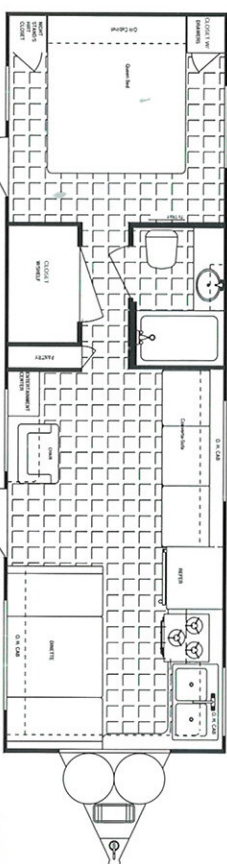


Length 31'5" 31'6"
 Hitch Dry Wt. 544 460
 Axle Dry Wt. 4,952 5,160
 GVWR 7,544 7,460
 UVW 5,496 5,620
 NCC 2,048 1,840

30BH

Opt. B, C, P

Sleeps 6
 Awning Length (ft.) 21
 Demand Water System (Gals.) 40
 Dual Holding Tanks (Approx. Gals.) 60
 Furnace (1000 BTUs) 31
 Tires ST205 75R15C

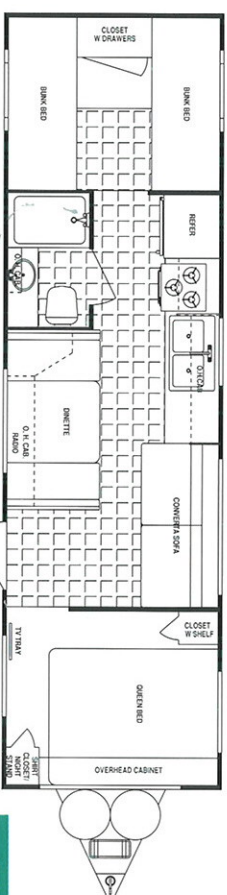


Length 31'5" 31'6"
 Hitch Dry Wt. 922 936
 Axle Dry Wt. 4,640 4,728
 GVWR 7,922 7,936
 UVW 5,562 5,664
 NCC 2,360 2,272

30FK

Opt. C, F

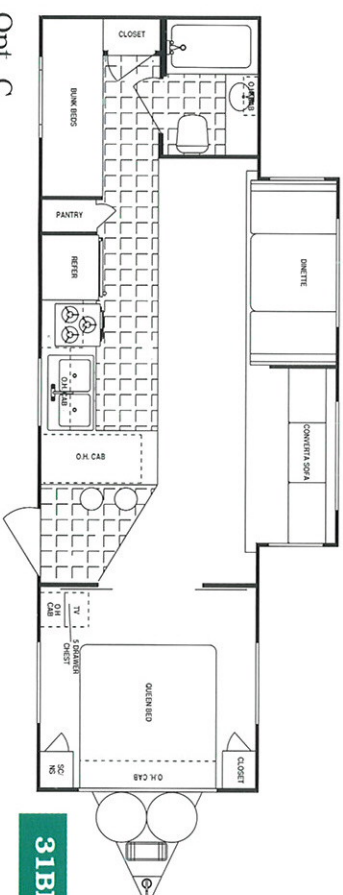
Sleeps 10
 Awning Length (ft.) 20
 Demand Water System (Gals.) 40
 Dual Holding Tanks (Approx. Gals.) 60
 Furnace (1000 BTUs) 31
 Tires ST205 75R15C



Length 32'5" 32'6"
 Hitch Dry Wt. 624 N/A
 Axle Dry Wt. 5,182 N/A
 GVWR 7,624 N/A
 UVW 5,806 N/A
 NCC 1,818 N/A

31BH-4

Sleeps 8
 Awning Length (ft.) 21
 Demand Water System (Gals.) 40
 Dual Holding Tanks (Approx. Gals.) 60
 Furnace (1000 BTUs) 31
 Tires ST225 75R15C

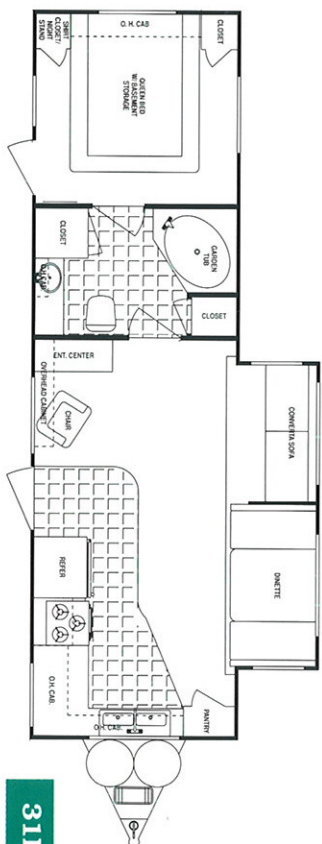


Length 32'5" 32'6"
 Hitch Dry Wt. 734 500
 Axle Dry Wt. 6,056 6,080
 GVWR 9,534 9,300
 UVW 6,790 6,580
 NCC 2,744 2,720

31BH-DSL

Opt. C

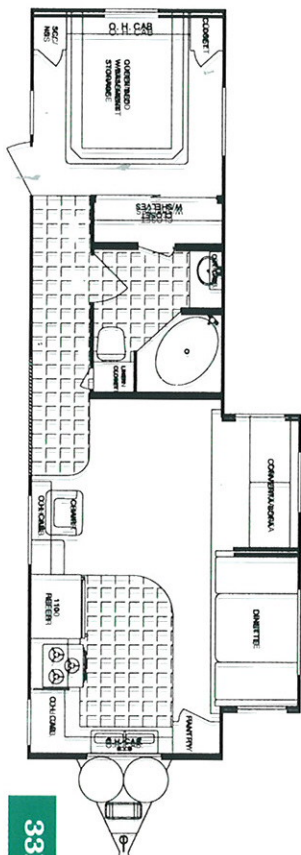
Sleeps 6
 Awning Length (ft.) 21
 Demand Water System (Gals.) 40
 Dual Holding Tanks (Approx Gals.) 90
 Furnace (1000 BTUs) 35
 Tires ST225 75R15C



Length 32'5" 32'6"
 Hitch Dry Wt. 886 880
 Axle Dry Wt. 6,104 5,978
 GVWR 9,686 9,680
 UVW 6,990 6,558
 NCC 2,696 2,822

Opt. C

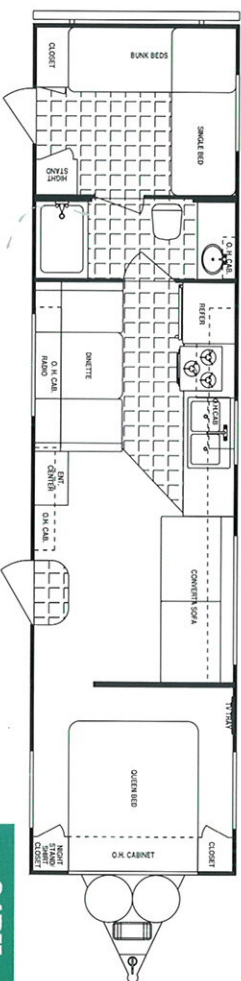
Sleeps 6
 Awning Length (ft.) 21
 Demand Water System (Gals.) 40
 Dual Holding Tanks (Approx Gals.) 90
 Furnace (1000 BTUs) 35
 Tires ST225 75R15C



Length 34'5" 34'6"
 Hitch Dry Wt. 1,222 1,352
 Axle Dry Wt. 5,858 5,924
 GVWR 10,022 10,152
 UVW 7,080 7,276
 NCC 2,942 2,876

Opt. C

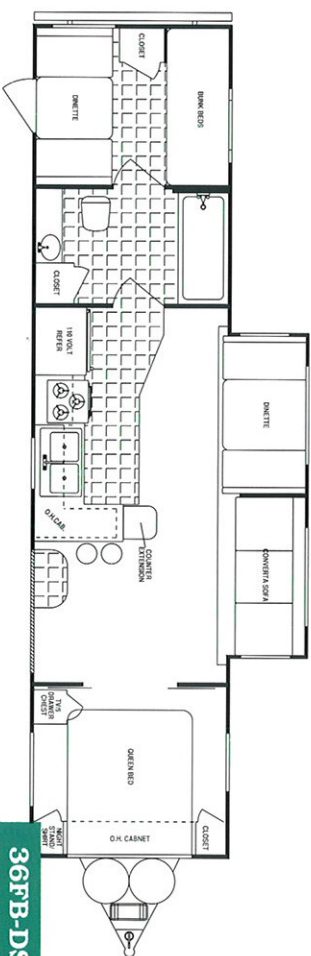
Sleeps 6
 Awning Length (ft.) 22
 Demand Water System (Gals.) 40
 Dual Holding Tanks (Approx Gals.) 90
 Furnace (1000 BTUs) 35
 Tires ST205 75R15C



Length 37'9" 37'10"
 Hitch Dry Wt. 828 N/A
 Axle Dry Wt. 5,532 N/A
 GVWR 7,828 N/A
 UVW 6,360 N/A
 NCC 1,468 N/A

Opt. A-rear, Opt. C, J, L

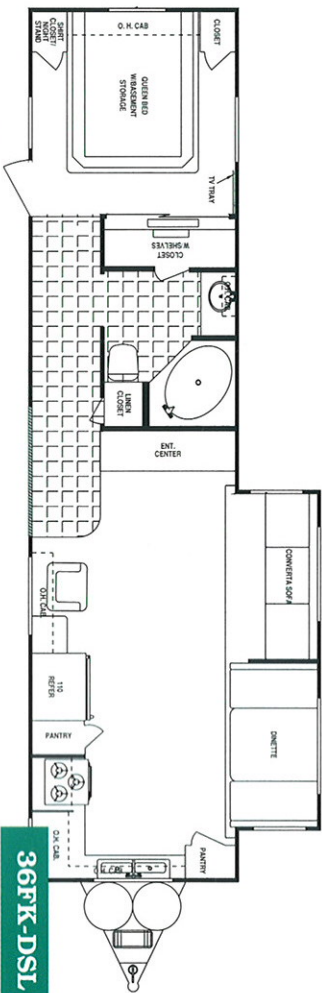
Sleeps 8
 Awning Length (ft.) 21
 Demand Water System (Gals.) 40
 Dual Holding Tanks (Approx Gals.) 60
 Furnace (1000 BTUs) 35
 Tires ST225 75R15C



Length 37'5" 37'6"
 Hitch Dry Wt. .824 N/A
 Axle Dry Wt. 6,736 N/A
 GVWR 9,624 N/A
 UVW 7,560 N/A
 NCC 2,064 N/A

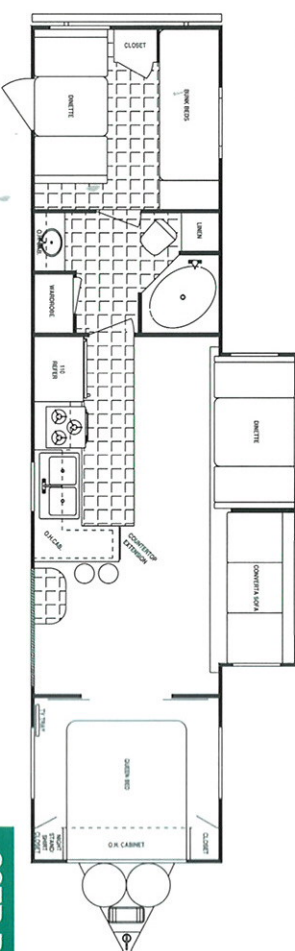
Opt. A-rear, Opt. C, D, L, R

Sleeps 21
 Awning Length (feet)
 Demand Water System (Gals.)
 Dual Holding Tanks (Approx Gals.)
 Furnace (1000 BTUs)
 Tires
 ST225 75R15D



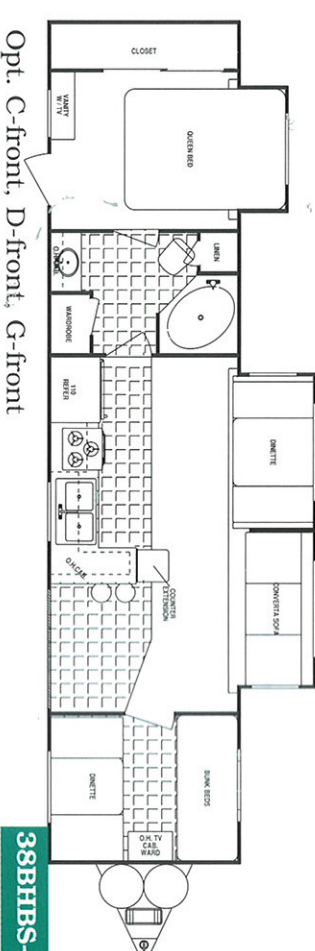
Length 37'5" 37'6"
 Hitch Dry Wt. 1,120 1,258
 Axle Dry Wt. 6,672 6,514
 GVWR 9,920 10,058
 UVW 7,792 7,772
 NCC 2,128 2,286

Sleeps 8
 Awning Length (ft.)
 Demand Water System (Gals.)
 Dual Holding Tanks (Approx Gals.)
 Furnace (1000 BTUs)
 Tires
 ST225 75R15D



Length 39'5" 39'6"
 Hitch Dry Wt. 1,150 1,180
 Axle Dry Wt. 6,816 6,788
 GVWR 11,310 11,340
 UVW 7,966 7,958
 NCC 3,344 3,344

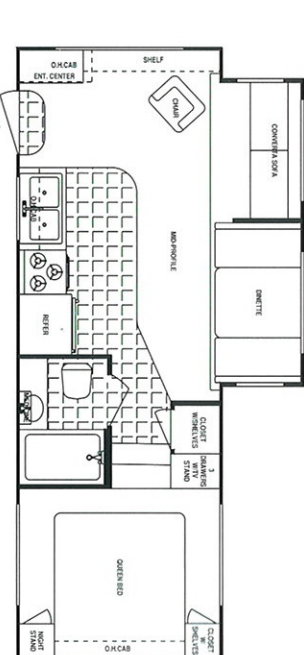
Sleeps 8
 Awning Length (ft.)
 Demand Water System (Gals.)
 Dual Holding Tanks (Approx Gals.)
 Furnace (1000 BTUs)
 Tires
 ST225 75R15D



Length 39'5" 39'6"
 Hitch Dry Wt. 1,132 1,126
 Axle Dry Wt. 7,030 7,278
 GVWR 12,192 11,286
 UVW 8,162 8,404
 NCC 3,130 2,882

FOUR WINDS/CLASSIC LAMINATE/SUPREME 5TH WHEEL

Sleeps 6
 Awning Length (ft.)
 Demand Water System (Gals.)
 Dual Holding Tanks (Approx Gals.)
 Furnace (1000 BTUs)
 Tires
 ST205 75R15C



Length 24'11" 24'11"
 Hitch Dry Wt. 884 948
 Axle Dry Wt. 5,436 5,496
 GVWR 7,884 7,948
 UVW 6,320 6,444
 NCC 1,564 1,504

24RL-M5

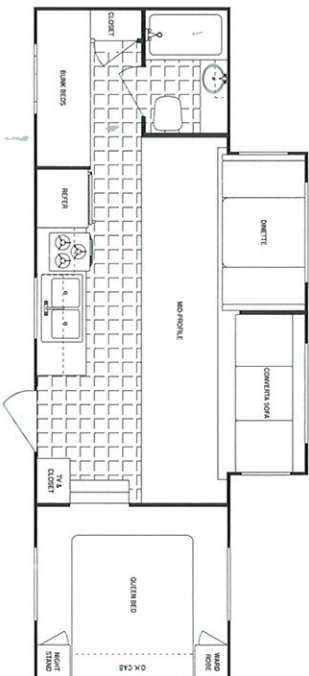
Sleeps 6
 Awning Length (feet) 18
 Demand Water System (Gals.) 30
 Dual Holding Tanks (Approx Gals.) 60
 Furnace (1000 BTUs) 31
 Tires ST225 75R15D



26RK-M5

	Four Winds	Laminate/Supreme
Length	26'11"	26'11"
Hitch Dry Wt.	1,076	1,176
Axle Dry Wt.	5,828	6,054
GVWR	9,866	9,976
UVW	6,894	7,230
NCC	2,972	2,746

Sleeps 8
 Awning Length (ft.) 18
 Demand Water System (Gals.) 40
 Dual Holding Tanks (Approx Gals.) 90
 Furnace (1000 BTUs) 31
 Tires ST225 75R15D



27BH-M5

	27'11"	27'11"
Length	27'11"	27'11"
Hitch Dry Wt.	1,090	N/A
Axle Dry Wt.	5,592	N/A
GVWR	9,890	N/A
UVW	6,682	N/A
NCC	3,208	N/A

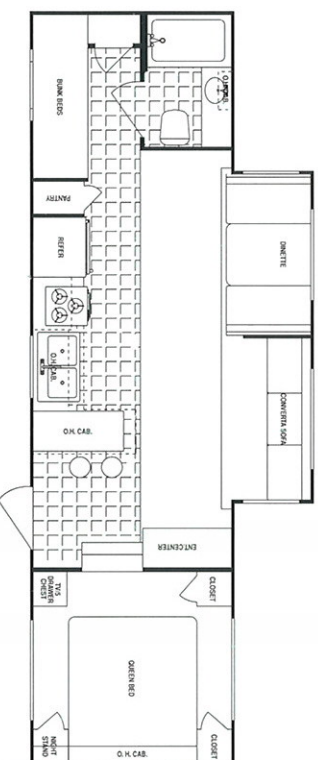
Sleeps 6
 Awning Length (ft.) 18
 Demand Water System (Gals.) 40
 Dual Holding Tanks (Approx Gals.) 90
 Furnace (1000 BTUs) 31
 Tires ST225 75R15D



27RK-H5

	27'11"	27'11"
Length	27'11"	27'11"
Hitch Dry Wt.	1,162	1,026
Axle Dry Wt.	5,898	5,960
GVWR	9,962	9,826
UVW	7,060	6,986
NCC	2,902	2,840

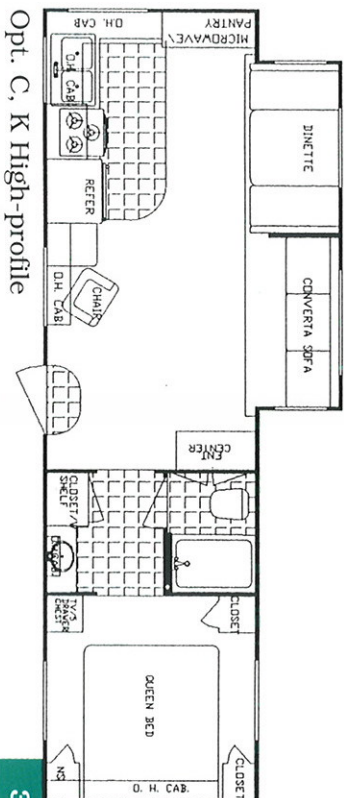
Sleeps 8
 Awning Length (ft.) 16
 Demand Water System (Gals.) 40
 Dual Holding Tanks (Approx Gals.) 60
 Furnace (1000 BTUs) 35
 Tires ST225 75R15D



30BH-H5

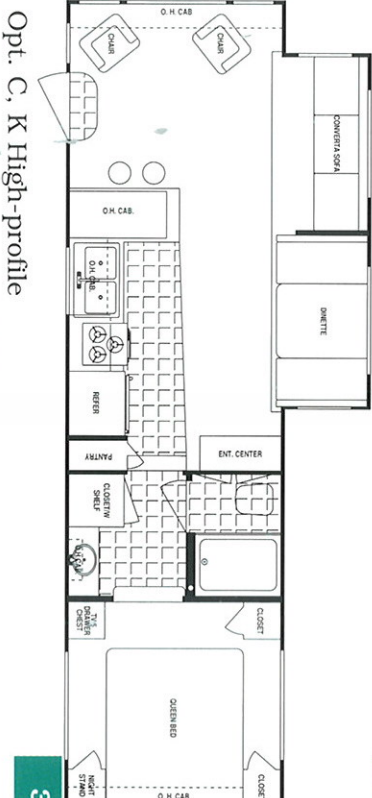
	30'11"	30'11"
Length	30'11"	30'11"
Hitch Dry Wt.	1,280	1,384
Axle Dry Wt.	5,980	6,088
GVWR	10,080	10,184
UVW	7,260	7,472
NCC	2,820	2,712

Sleeps 6
 Awning Length (feet) 21
 Demand Water System (Gals.) 40
 Dual Holding Tanks (Approx Gals.) 90
 Furnace (1000 BTUs) 35
 Tires ST225 75R15D



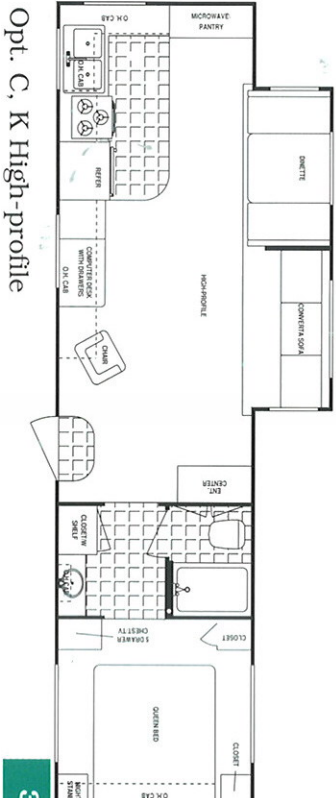
	Length	Four Winds	Laminate/Supreme
Hitch Dry Wt.	30'11"	1,362	1,322
Axle Dry Wt.		6,180	6,582
GVWR		10,162	10,122
UVW		7,542	7,904
NCC		2,620	2,358

Sleeps 6
 Awning Length (ft.) 16
 Demand Water System (Gals.) 40
 Dual Holding Tanks (Approx Gals.) 60
 Furnace (1000 BTUs) 35
 Tires ST225 75R15D



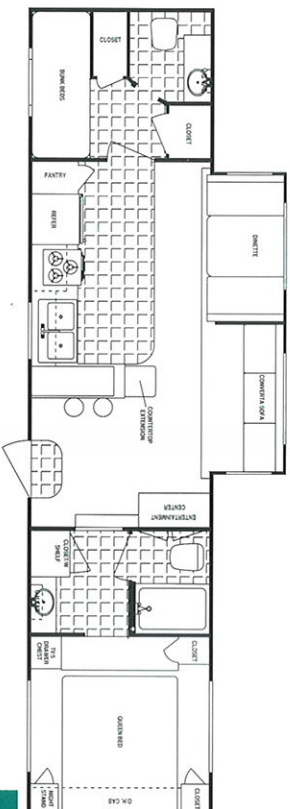
	Length	Four Winds	Laminate/Supreme
Hitch Dry Wt.	30'11"	1,476	1,474
Axle Dry Wt.		5,490	6,336
GVWR		10,276	10,274
UVW		6,966	7,810
NCC		3,310	2,464

Sleeps 6
 Awning Length (ft.) 18
 Demand Water System (Gals.) 40
 Dual Holding Tanks (Approx Gals.) 90
 Furnace (1000 BTUs) 35
 Tires ST225 75R15D



	Length	Four Winds	Laminate/Supreme
Hitch Dry Wt.	33'11"	1,238	1,320
Axle Dry Wt.		6,834	6,100
GVWR		10,038	10,120
UVW		8,072	7,420
NCC		1,966	2,700

Sleeps 8
 Awning Length (ft.) 21
 Demand Water System (Gals.) 40
 Dual Holding Tanks (Approx Gals.) 120
 Furnace (1000 BTUs) 35
 Tires ST225 75R15D



	Length	Four Winds	Laminate/Supreme
Hitch Dry Wt.	35'11"	1,604	2,002
Axle Dry Wt.		6,806	6,896
GVWR		11,764	12,162
UVW		8,410	8,898
NCC		3,354	3,264

Your Just Show Card and Go!

We build our products better and we protect you with the industry's best warranty coverage, but we know that sometimes things can go wrong on the road. So when you become the proud owner of a new Four Winds, it's just the beginning of our exclusive round-the-clock Customer Care Program.

Customer Care provides complete and fully paid roadside assistance, emergency road service, and special warranty support benefits that go with you wherever you travel. You get immediate access to fast, dependable service when and where you need it.

Add our toll-free warranty and service appointment assistance and a technical assistance hot-line and you have the security and peace of mind of full-time support.

Our exclusive 24-hour Customer Care benefits include:

- Fully paid emergency roadside assistance
- Free jump starts
- Free fuel delivery
- Free lock-out service
- Free on-site mechanical service in the event of a break-down
- 24-hour technical hot-line
- Toll-free service appointment scheduling nationwide
- Warranty service assistance at over 6,800 qualified service agencies
- Free customer trip routing and map service

At Four Winds we want you to be able to enjoy your new trailer of fifth wheel to the fullest. That's why we've provided Four Winds Customer Care to take care of the problems that could spoil your travels.

THE INDUSTRY'S BEST WARRANTY—BY FAR!

We're so confident in the design and construction of our RVs that they are covered by Thor's exclusive Full 2-Year Warranty: "Hitch-to-bumper" coverage to protect your RV investment.

*Your Full 2-Year Warranty Includes:**

- | | | |
|----------------|----------------|---------------------|
| • Refrigerator | • Slide-out | • LP tanks |
| • Furnace | • Mechanisms | • Power converter |
| • Water heater | • Range | • Plumbing |
| • TV antenna | • Microwave | • Electrical |
| • Lavatory | • Water Pump | • Doors |
| • Awnings | • House Stereo | • ... and much more |

*See individual company warranty statements for details.



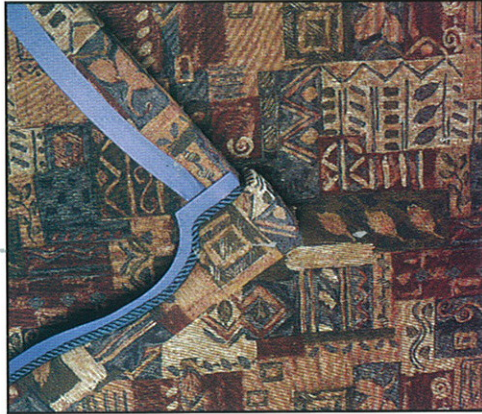
FOUR WINDS MANUFACTURING
305 Steury Ave. • Goshen, IN 46528
219-534-1224

FOUR WINDS / LITE / LAMINATE / SUPREME

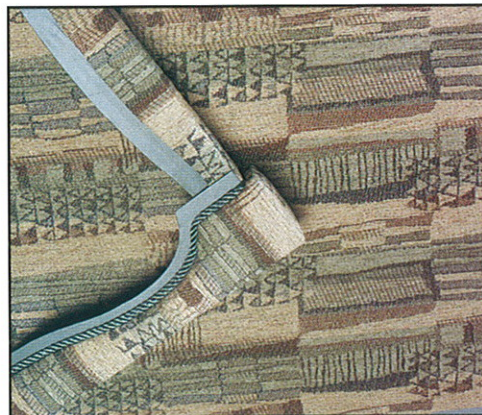
Fabric Options



Mystery



Twilight Blue



Aspen Green



Antique Taupe

Product information and specifications in this brochure were as accurate as possible at time of printing. Since we continually strive to improve our products, actual products may differ. Prices and specifications are subject to change without notice. All capacities are approximate and dimensions are nominal. Some features or options may be different or unavailable in Canada.

Vehicle Loading—Every effort has been made to provide the greatest number of options for the recreation vehicle owner. Along with these choices comes the responsibility to manage the loads that are imposed by the choices so that they remain within the manufacturer's specified chassis weight limits. Do not overload the recreation vehicle.

Dry weights based on standard features; optional equipment not included. Net carrying capacity (NCC) determined by subtracting unloaded vehicle weight (UVW) from gross vehicle weight (GVWR) and includes fluids, options and cargo. Liquid capacities and weights are approximations only.

Warning: This information is intended as a guide only. Weights of individual vehicles may vary. Consult your owner's manual for complete loading, weighing and towing instructions.