

Signature

Fifth Wheels

2000

Just get away.

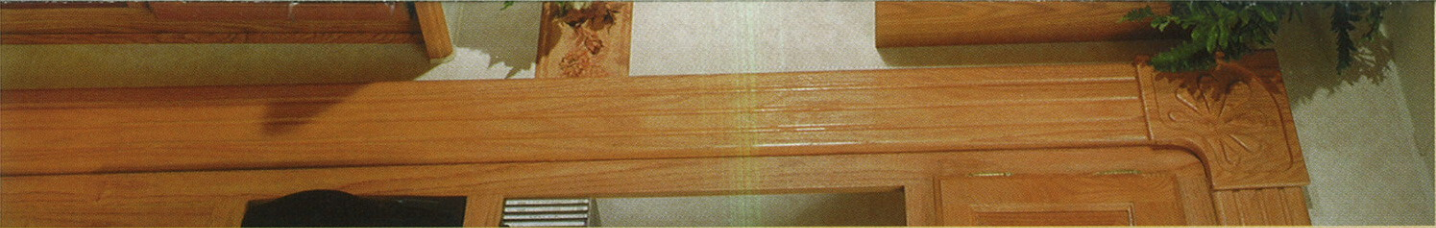


SIGNATURE — DISCOVER AN EXCITING NEW LEVEL OF LUXURY.

From its handsome exterior and sharp graphics to the smallest interior detail, a Signature fifth wheel is designed and built to the highest standards under rigorous, stringent quality control. And every Signature is loaded with the features you want—features that are expensive options on other fifth wheels.

Signature's fully-laminated 2" side-walls combine a smooth fiberglass skin, block foam insulation and an aluminum framework for a wall that gives superior strength and insulating value. Five-inch truss rafters with 3/8" decking contribute to the Signature's roof strength, while the one-piece, extra-tough rubber roofing provides greater protection from the weather. The one-piece 5/8" seamless aluminum-laminated structurewood floor decking is strong and avoids squeaking. Mount all of this onto the Signature's 10" I-beam frame, and you have a vehicle of exceptional strength, durability, and safety.





Inside, Signature proudly features the finest materials and a level of craftsmanship seldom seen in a recreation vehicle. Rich, solid oak cabinet doors, stylish fabrics, day/night shades and residential window treatments all work together to give Signature a warm, home-like feeling. A Signature is designed to be truly a home away from home. Optional free-standing dinette with chairs gives you greater flexibility and comfort, making the large super-slide an even more delightful feature. Galleries are equipped with the finest appliances, including a built-in double-door refrigerator and microwave, a three-burner range with one high-intensity burner, an oven, and lots of storage and counter space. Preparing meals in a Signature should never be a chore. And every Signature includes a large entertainment center with a stereo/cassette deck with CD player, TV antenna, cable TV service and pre-wire for satellite hook-up. When you travel in a Signature you're always in touch.





The large bedroom wardrobe allows you to take along all the clothes you're likely to need and hang them properly, so you'll always look your best. (Shown with bedroom slide option)

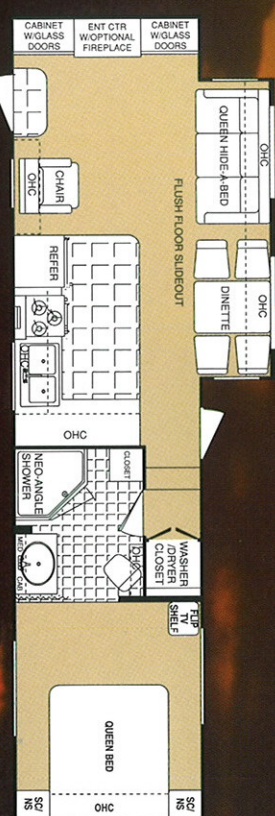
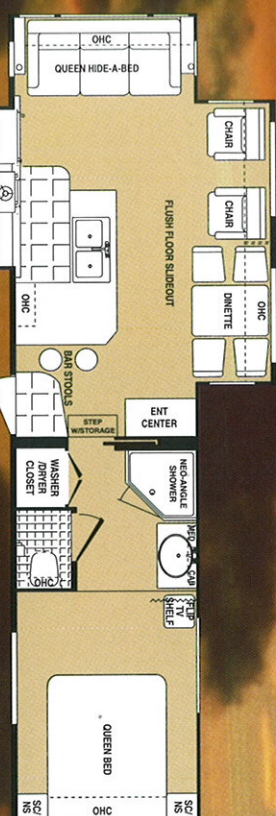
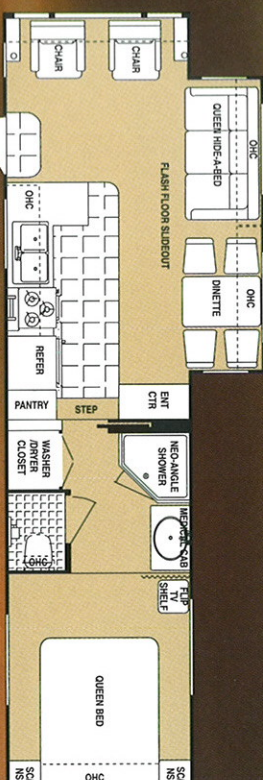
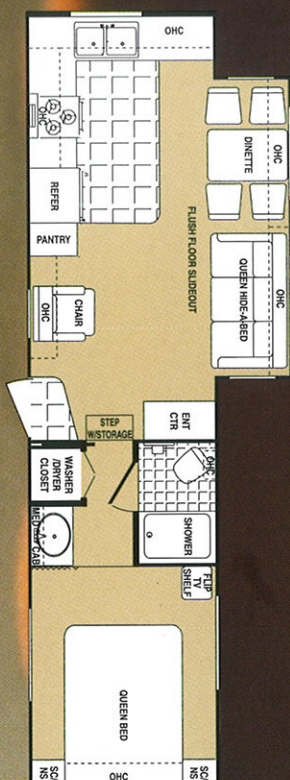
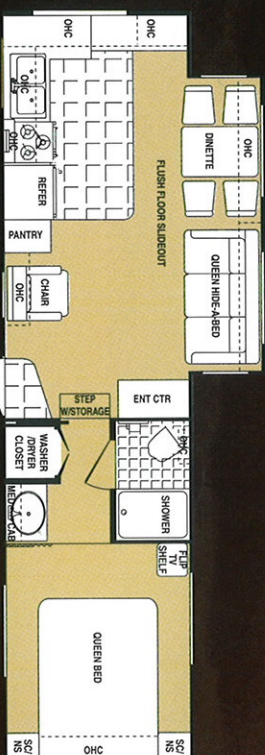
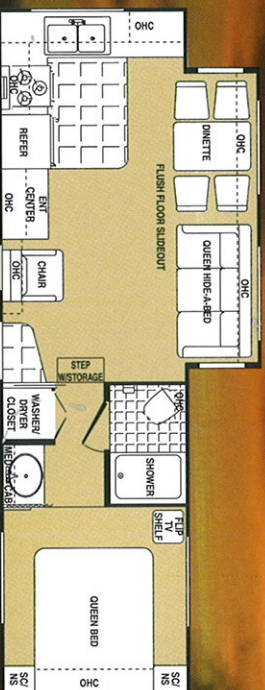
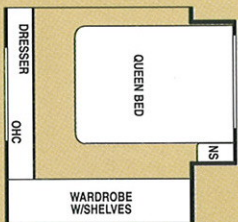
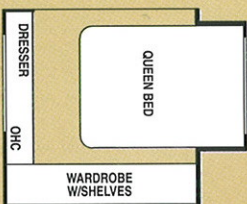


Bathrooms are spacious and outfitted with lots of storage; most can serve as convenient dressing rooms, too. And you'll especially appreciate the large mirrored medicine cabinet and full-length mirror on the door.

SIGNATURE—FLOOR PLANS DESIGNED FOR GRACIOUS LIVING.

OPT.

SLIDES



Available with Opt. A

Available with Opt. B

SIGNATURE FABRICS



Rigato Blue



Pistachio Green



Bally Taupe

SPECIFICATIONS

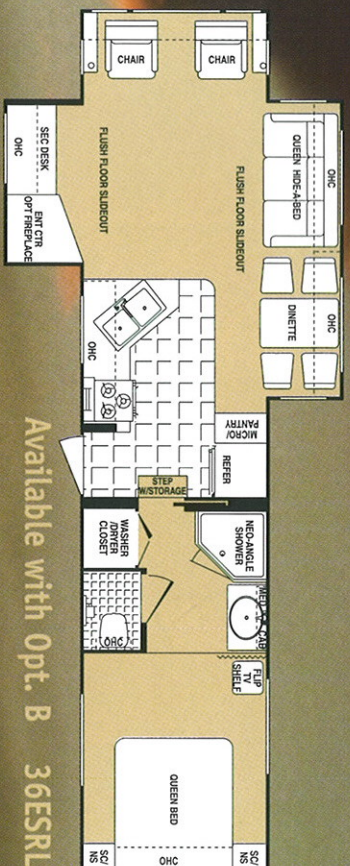
2000 Models	27RK	28RK	30RK	32RK	32RL	34KS	34RLRD	36ESRL	36KS	36RL	36SS
Length	28'11"	31'3"	32'4"	35'2"	34'	35'5"	35'5"	38'2"	38'2"	38'2"	38'2"
Exterior Width	8'	8'	8'	8'	8'	8'	8'	8'	8'	8'	8'
Exterior Height	12'3"	12'3"	12'5"	12'3"	12'3"	12'5"	12'3"	12'5"	12'5"	12'5"	12'5"
Interior Bedroom Height	7'0"	7'0"	7'0"	7'0"	7'0"	7'0"	7'0"	7'0"	7'0"	7'0"	7'0"
Hitch Dry Weight	1,796	2,098	2,074	2,220	2,344	2,502	2,412	2,424	2,720	2,428	2,521
GVWR	12,196	12,498	12,474	12,620	12,744	12,902	12,812	17,000	17,000	17,000	17,000
UVW	9,126	9,532	9,966	10,330	10,376	11,072	10,644	13,522	12,488	12,722	12,775
NCC	3,070	2,966	2,508	2,290	2,368	1,830	2,168	3,478	4,512	4,278	4,225
Fresh Water Approx. (gal)	48	48	48	48	48	48	60	48	48	48	48
Holding Tanks Approx. (gal)	131	131	131	131	141	141	141	141	141	141	141
Tire Size	UT235/ 85R16E	UT235/ 85R16E	UT235/ 85R16E	UT235/ 85R16E	UT235/ 85R16E	UT235/ 85R16E	UT235/ 85R16E	UT235/ 85R16E	UT235/ 85R16E	UT235/ 85R16E	UT235/ 85R16E
Furnace Size BTUs	40	40	40	40	40	40	40	40	40	40	40

Vehicle Loading—Every effort has been made to provide the greatest number of options for the recreation vehicle owner. Along with these choices comes the responsibility to manage the loads that are imposed by the choices so that they remain within the manufacturer's specified chassis weight limits. Do not overload the recreation vehicle.

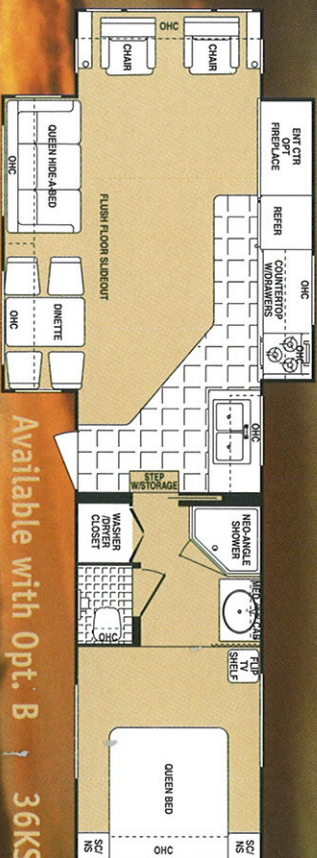
Dry weights based on standard features; optional equipment not included. Net carrying capacity (NCC) determined by subtracting unloaded vehicle weight (UVW) from gross vehicle weight (GVWR) and includes fluids, options and cargo. Liquid capacities and weights are approximations only.

Warning: This information is intended as a guide only. Weights of individual vehicles may vary. Consult your owner's manual for complete loading, weighing and towing instructions.

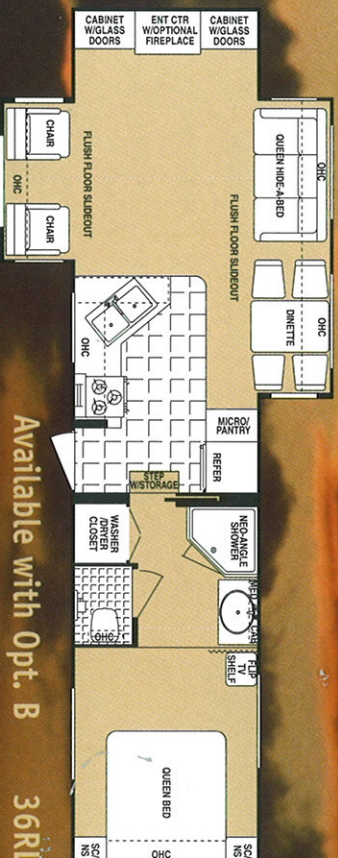
Weights include optional bedroom slide, except 27RK.



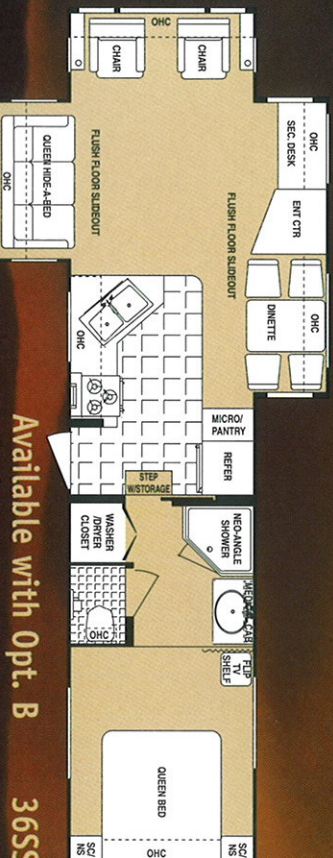
Available with Opt. B 36ESRL



Available with Opt. B 36KS



Available with Opt. B 36RL



Available with Opt. B 36SS

SIGNATURE—STANDARD FEATURES & OPTIONS

YOU'RE SURE TO ENJOY!

Exterior

- 30" radius entrance door
- Built-in twin 30# LP bottles w/auto changeover
- One-piece EPDM rubber roof
- Triple entry step(s)
- Flush door latch w/ dead-bolt lock

- Locking baggage doors
- Radused jalousie windows
- Outside storage compartment(s)
- Sewer hose storage

- Patio light
- Exterior light under goose-neck
- Large front storage compartment
- Battery-box compartment
- Grab-handle at entrance door
- Squeeze seal around slide-out room

- Black-water flush
- Slider windows in living room slide-outs
- Fiberglass laminated sidewalls
- Front and rear fiberglass caps
- Detachable 30 amp power cord

Construction

- Aluminum-framed fully-laminated 2" sidewall
- Block-foam insulation sidewall/floor
- 5" truss rafters with 3/8" decking full length
- Carpeted and lighted storage areas
- One piece, 3/8" seamless Weyerhaeuser structure wood floor decking
- Totally enclosed insulated underbelly
- Roof-line rain gutter w/down spouts
- Track guided electric powered Flush Floor slide-out system in living room large slide
- Laminated aluminum framed main floor and bath deck

Running Gear

- 10" I-beam frame

Electrical

- Electric brakes on all wheels
- Break-away safety switch
- 6000 lb. front landing jacks
- Shock absorbers
- Rear stabilizer jacks
- Electric front jacks
- 16" tires

Interior

- Double door refer
- Double bowl fiberglass/acrylic kitchen sink
- 40,000 btu furnace
- Combination range hood, fan, light, and monitor panel (most models)

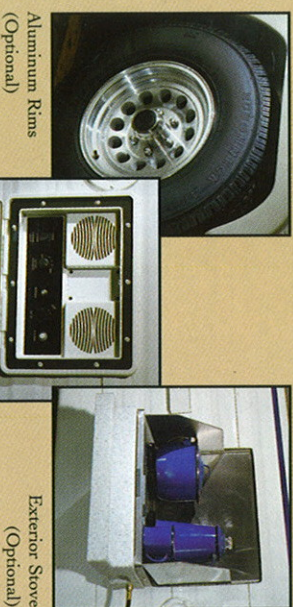
Options Available

- Rocker/rectriner/glider
- Washer dryer prep, 10-gal. gas/electric water heater, 50-amp service
- 10-gal. gas/electric water heater
- Hardwood slide out facia in bedroom or living room
- Central vacuum with accessories
- Fantastic fan with rain sensor and wall thermostat
- Poly air insulation (roof only)
- Slide-out gas bottle tray
- Slide-out awning toppers
- Battery
- Outside handicap grab handle
- Space-saver coffee maker
- Porcelain toilet w/sprayer
- Reese 15K hitch
- Fireplace
- Upgrade marble like linoleum
- Water filter
- Free standing dinette w/4 chairs
- Bedroom slide-out (N/A 27RK)
- Extra large refer
- Spare tire and carrier
- Spare lights
- Day/night shades
- Aluminum rims
- 15M BTU A/C

Appliances/Equipment

- Microwave
- 3-burner range w/oven and one high-output burner
- 6-gal. gas/electric water heater w/DSI
- Sink cover
- Demand water pump
- 13.5 BTU ducted A/C
- Water heater bypass
- Stereo/cassette/5-CD player w/remote
- DSS prep for satellite hook-up
- Trash can
- TV antenna with booster
- Cable TV hook-up
- Second TV outlet in bedroom
- Awning
- Roof rack and ladder

This brochure is printed on recycled paper as part of Thor's corporate effort to minimize waste and conserve our natural resources. Providing safe, fuel-efficient recreational vehicles is Thor's way of further demonstrating our role as the industry leader in safeguarding our nation's environment.



Aluminum Rims (Optional)

Exterior Entertainment Center (Optional)

Exterior Stove (Optional)

Why a Thor Product Is Your Best RV Value.

Thor Industries, Inc., listed on the New York Stock Exchange, proudly traces its history back seventy years to the pioneering days of the RV industry with the founding of Airstream, the industry's oldest and most renowned brand. Our total commitment to quality and our philosophy of putting our customers first has led to our continuous growth. Today Thor is the second largest builder of RVs in North America. Thor's strong financial condition and years of solid growth are your assurance that we will be here to serve you for years to come. We think this extra peace of mind is important when you are making a significant investment. Because we are #2, we work harder than other manufacturers to satisfy you. Our customers are always #1 with us.

We're so confident in the design and construction of our products that they are covered by Thor's exclusive Full 2-Year Standard Warranty.

Thor's Exclusive Full

2-Year Standard Warranty

2-year "hitch-to-bumper" coverage to protect your RV investment.

The best protection in the RV industry - by far!



305 Steury Ave. • Goshen, IN 46528
219.534.1224 • Fax 219.533.3807
www.dutchmen-rv.com

Your Local Dealer