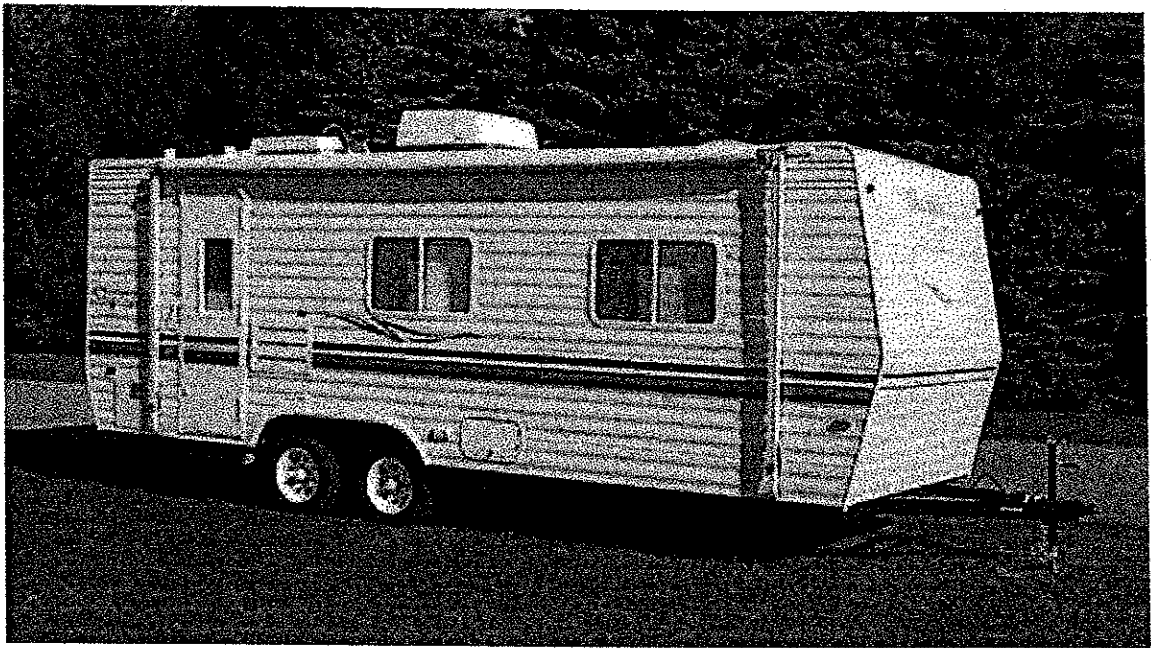


# Introducing:



*Skamper Lite*

*By Aero Mfg., Inc.*

*AND KODIAK*

# 2000 Skamper Lite

The 2000 model year has arrived, and with it comes the totally enhanced Skamper Lite Travel Trailers. This unique product is designed to meet the ever-growing demand for a lightweight, economical travel trailer. While our goal is to make a lightweight unit, we also want to ensure that our product still offers all of the comforts and conveniences found on larger and heavier travel trailers. That is why for the new model year we have added features like ducted A/C, pass through storage, and walk around queen beds. We are also adding several new FW floor plans. The 524RLSS and soon to be released 530RLSS will allow dealers to attract customers that once thought they couldn't tow a super slide FW. These new models feature a rack & pinion super slide. Skamper Lite have been designed to provide abundant storage throughout the coach. We will be introducing Travel Trailer's with super-slide in the near future as well. When comparing the Skamper Lite to the competition it will be easy to see why our product is the best choice for improving your bottom line. We offer the best pricing, most features and fastest growing floor plan selection in the market, so sign up now and be prepared for a more profitable 2000.

There is a new addition to the Skamper Lite family, ***KODIAK!*** This new and innovative product is the "**Next Generation**" of expandable travel trailers. The expandable travel trailer market has been one of the fastest growing segments in the RV industry over the past several years. With the introduction of the KODIAK, this trend is sure to continue. What distinguishes this product from the rest of the competition is not only its construction, but also its dimensions. By creating an eight-foot wide expandable travel trailer we are able to offer larger beds, holding tanks and plenty of interior room. Your customer will no longer feel as if they are settling for less living space when they decide to purchase this type of product.

The K160' Highlites include: 25gal. fresh, 25gal. blackwater, 35gal gray water tanks. 14" radial tires, 58 x 92 dinette, 58 x 80 front bed, 48 x 80 rear bed, solid oak framed cabinet doors, and much, much, more...

So be sure to sign up *Today* to begin carrying the most innovative product in the expandable market, **KODIAK** by *Skamper-Lite*.

*Skamper Lite* & **KODIAK**

**Heavy on Features, Lite on Price!**


# Skamper Lite

## Standard Features

 **2 Door Refrigerator**

 **Ducted Air Conditioning**

 **Oven**

 **Thor 2+2 Warranty**

 **Banac Hardwood  
Construction**

 **Sliding Drawer Under  
Bed**

 **5/8" exterior grade  
Plywood Floor**

 **Darco Underbelly**

 **Vinyl Roof**

 **30 Gal. Roto - Molded  
Seamless Tanks**

 **5' trussed roof**

 **R-7 Owens corning  
Insulation**

 **Recessed Clothes Hamper**

 **3 Burner Stove**

 **Drop Storage Under Bed  
(Some models)**

 **Clamp Ring Windows**

# Skamper Lite

## Standards & Options

### Exterior Features

Radius Exterior Storage Doors  
 Front Flush Mount Window w/Rock Guard Awning.  
 Patio Light  
 Tandem Axle w/4 Wheel Electric Brakes  
 Radius Slider Clamp Ring Windows  
 New Exterior Graphics  
 Rear Stabilizer Jacks

### Interior Features

Carpet in Bedroom  
 Queen Bed w/Gas Struts  
 Drop Down Storage Under Bed (most models)  
 Large Sliding Drawer Under Bed (most models)  
 Color Coordinated Bedspread  
 Large Double Bowl Kitchen Sink  
 Radius Cabinet Style (Rounded Corners)  
 Marine Toilet  
 Black Oven w/Built-in Safety Glass  
 Shower Curtain  
 Sofa Bolsters  
 Screened Hinge-Style Egress Windows  
 Wallpaper Borders  
 Bedroom TV Table w/Wire  
 Easy Clean Linoleum

### Systems

Double 20# LP Bottles  
 40 Amp Converter Power Center  
 6 Gallon Gas Water Heater  
 Water Heater By-Pass System  
 Ground Fault Interrupter  
 Power Cord w/Hatch  
 Power Roof Vent In Bath  
 36 Gallon Demand Water System  
 LP Gas Leak Detector  
 Smoke Detector  
 Fire Extinguisher

### Construction

2-Year Structural and Major Component Warranty  
 1/4" Wood Roof Decking  
 5" Truss Roof Rafter System  
 5/8" Plywood Floor  
 Rubber Roofing  
 Butyl Rubber Around Windows, Doors, Lights, Fixtures  
 Double Seals w/Silicone Sealant at Corners & Windows  
 Galvanized Straps Around Construction Perimeters  
 Large Support Outriggers  
 Solid Oak Framed Cabinet Doors  
 Tongue & Groove Cabinet Doors  
 Double Door Refrigerator

### Popular Options

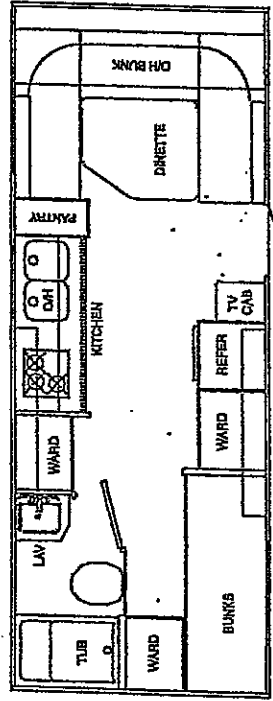
Dometic 13.5 BTU Air Conditioner  
 Stereo Prep  
 AM/FM Stereo w/4 Speakers  
 CD/AM/FM Stereo w/4 Speakers  
 Microwave  
 Stabilizing Jacks (Front)  
 Monitor panel  
 Stove Cover  
 Exterior Entertainment (w/Speakers)  
 Tub Surround  
 Outside Shower  
 TV Antenna w/Boosters & Cable  
 A & E Awning Color Coordinated Awning  
 Deluxe Chair  
 Spare Tire, Carrier & Cover  
 Skylight Over Tub  
 30# LP Bottles w/Cover  
 6 Gallon Gas/110 DSI Water Heater  
 Roof, Rack & Ladder  
 Power Tongue Jack  
 Safety Glass Windows  
 CSA

### WEIGHTS

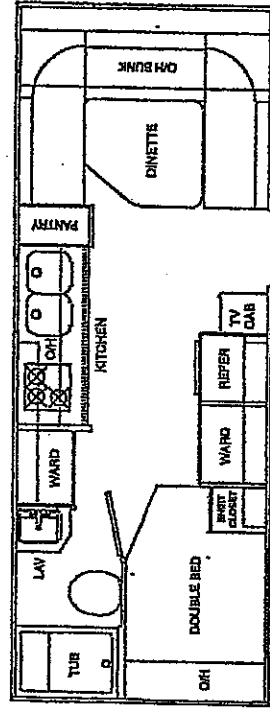
MODEL	UVW	GVWR	DRY HITCH WEIGHT
SK228	3400	5000	375
SK229	3420	5000	375
SK248	3733	5000	390
SK249	3916	5000	420
SK278	4130	6200	375
SK279	4140	6200	380
SK24RLSS	5673	7000	720
<b><u>KODIAK</u></b>			
K160	2558	3500	160

# 2000 Skamper Lite

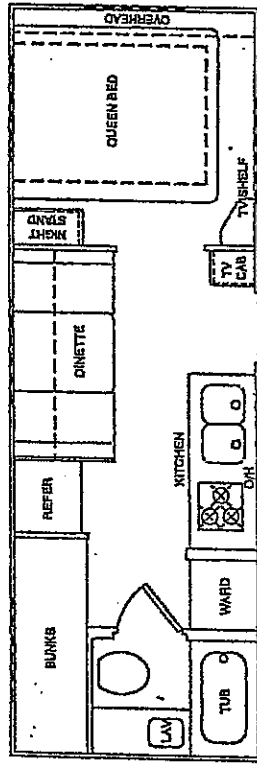
## Floorplans



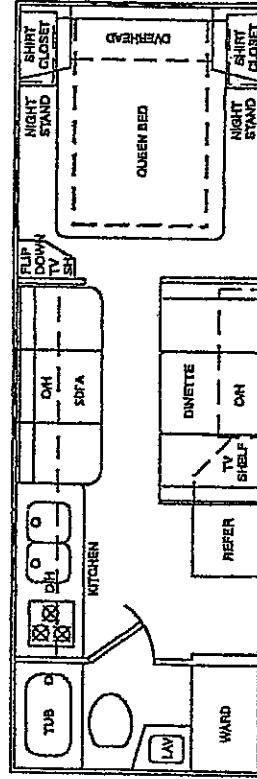
**SK228**



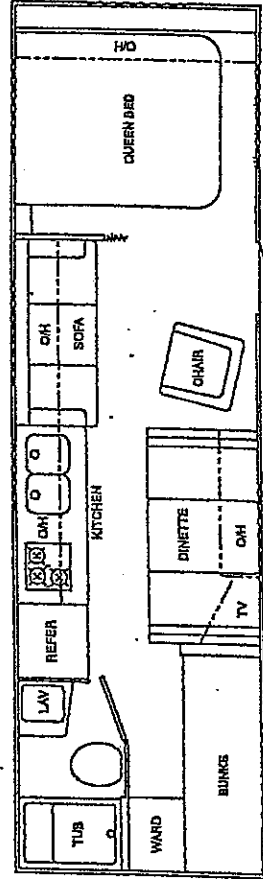
**SK229**



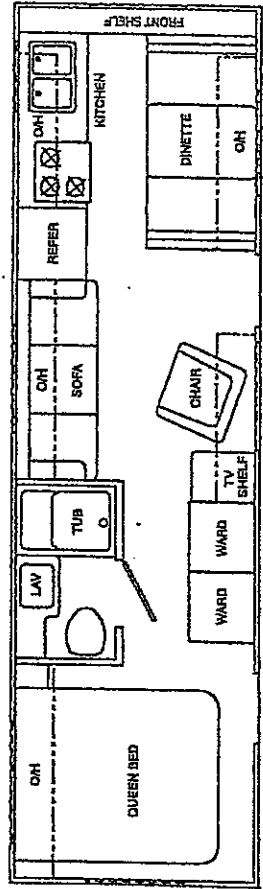
**SK248**



**SK249**



**SK278**



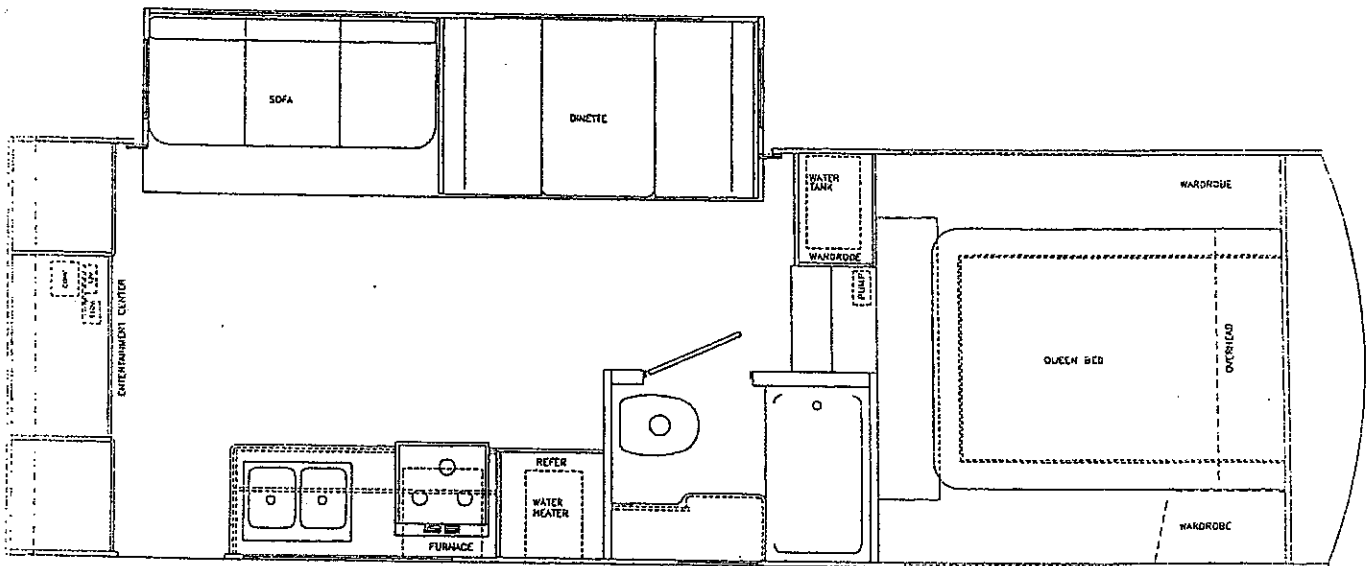
**SK279**

# NOW FEATURING

## S524RL-SS SKAMPER LITE 5<sup>TH</sup> WHEEL

- Rear entertainment Center
- 12' double slide for sofa and dinette
- Florescent light above kitchen sink
- Cathedral cabinet doors
- Oak edging around tables and counter tops
- 5" Truss roof
- and many more features

DON'T DELAY RESERVE YOUR 5<sup>TH</sup> WHEEL TODAY!

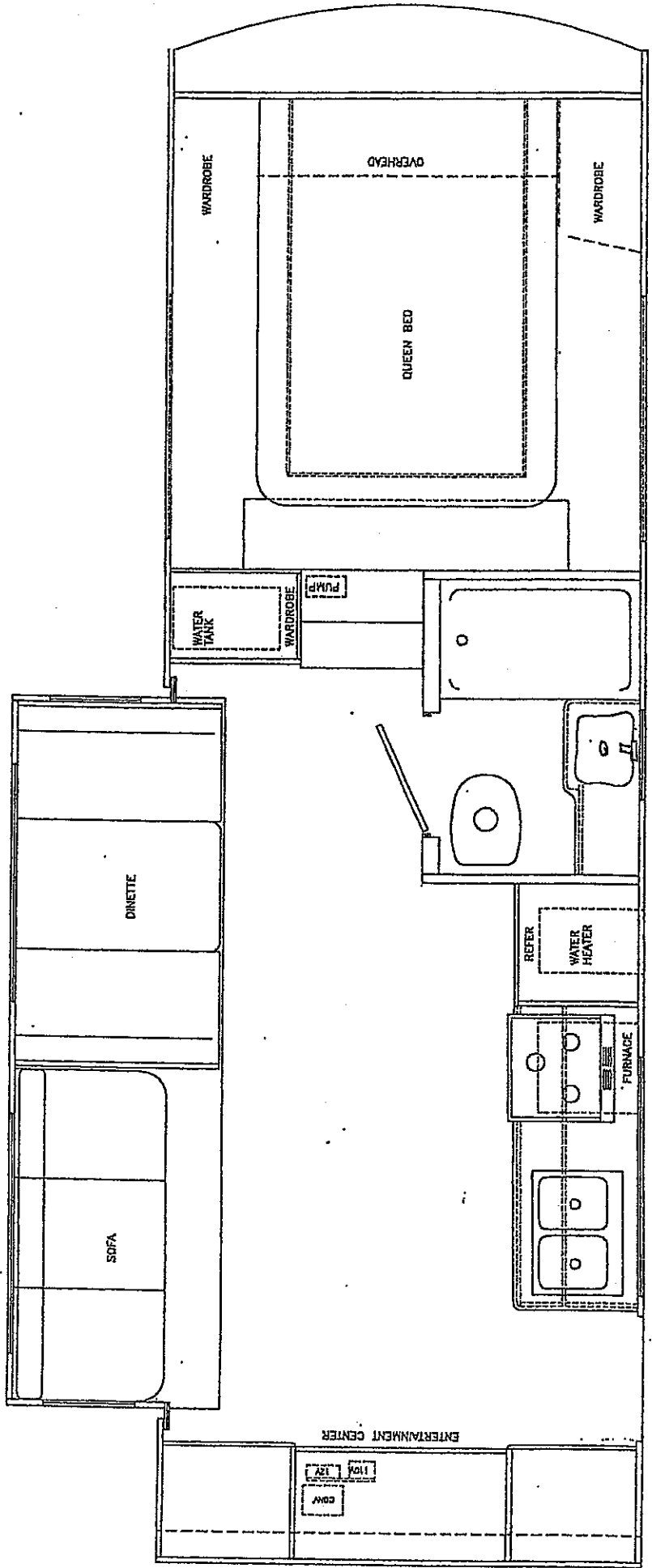


# AERO MANUFACTURING, INC.

925 W. Brooklyn Street ~ Syracuse, IN 46567 ~ 219/457-8787 ~ Fax: 219/457-2113

# SKAMPER LITE

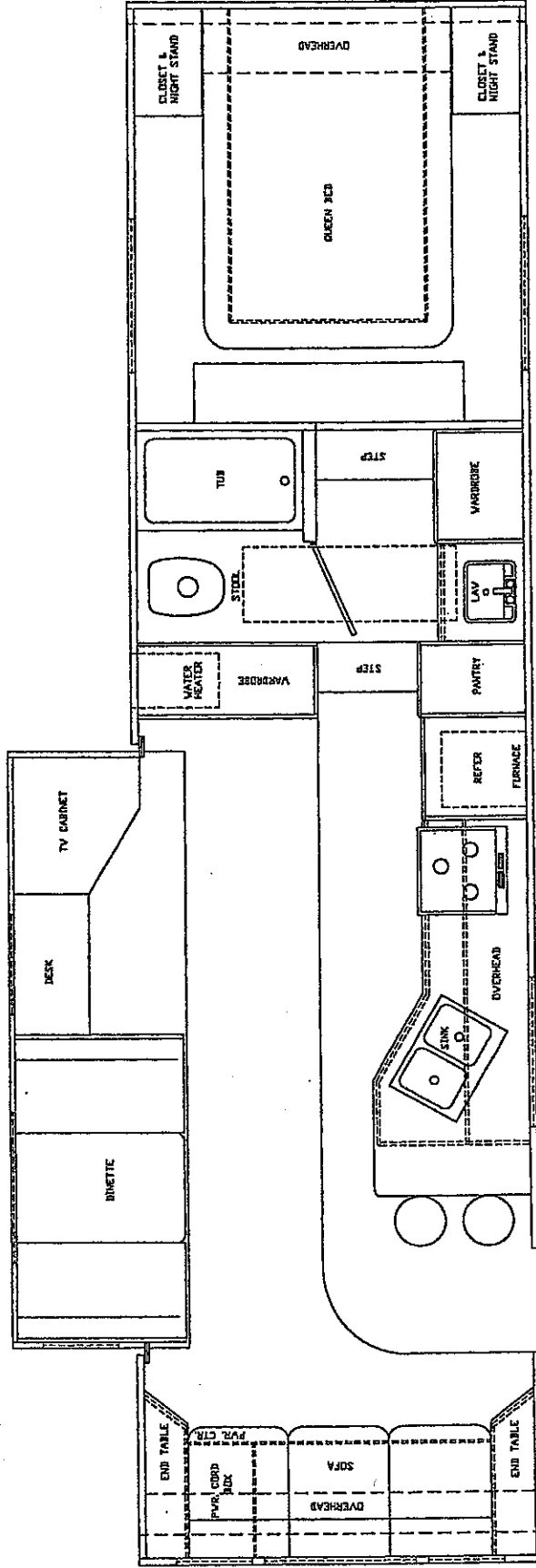
## S524RLSS 5<sup>TH</sup> WHEEL



S524RLSS

# SKAMPER LITE IS INTRODUCING

# THE 830RLSS COMING SOON!





# Introducing:



*by Skamper Lite*

The "Next Generation" of  
Expandable Travel Trailers



## **Standard Features**

### **CONSTRUCTION**

Stick & tin construction  
2-year Structural and Major Component Warranty  
1/4" Wood roof decking w/ vinyl roof covering (12 year warranty on vinyl roof)  
3" Solid tapered roof rafter system  
1/2" Structure wood floor  
Automotive D-seal on windows  
Galvanized straps around construction perimeters  
Solid oak framed cabinet doors  
14" Goodyear radial tires  
R-7 Insulation  
Extra Large laminated fold down beds (front 58 X 80, rear 48 x 80)

### **CHASSIS**

4" tube chassis  
Front mounted battery rack  
4 stabilizing jacks standard, (front optional on 16')  
Dexter leaf spring axle with 10" electric brakes  
E-coated frame  
4" square bumper w/ end caps

### **INTERIOR FEATURES**

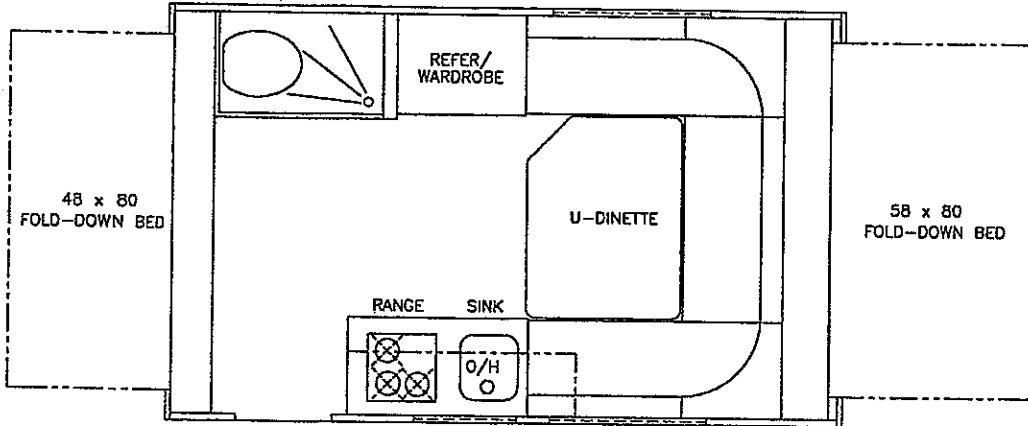
Large U shape dinette 58 X 92  
5" thick dinette cushions  
Privacy curtains for bunks  
Mini blinds  
TV shelf  
Wallpaper borders  
Power roof vent in bath  
Prewired for A/C and roof vent in opening  
6 gal. Gas water heater w/ bypass  
25 gal. Fresh water tank  
25 gal. Black & 35 gal. Gray tank  
3 cu ft refer in K 16  
5 cu ft refer in K19 & K21

### **POPULAR OPTIONS**

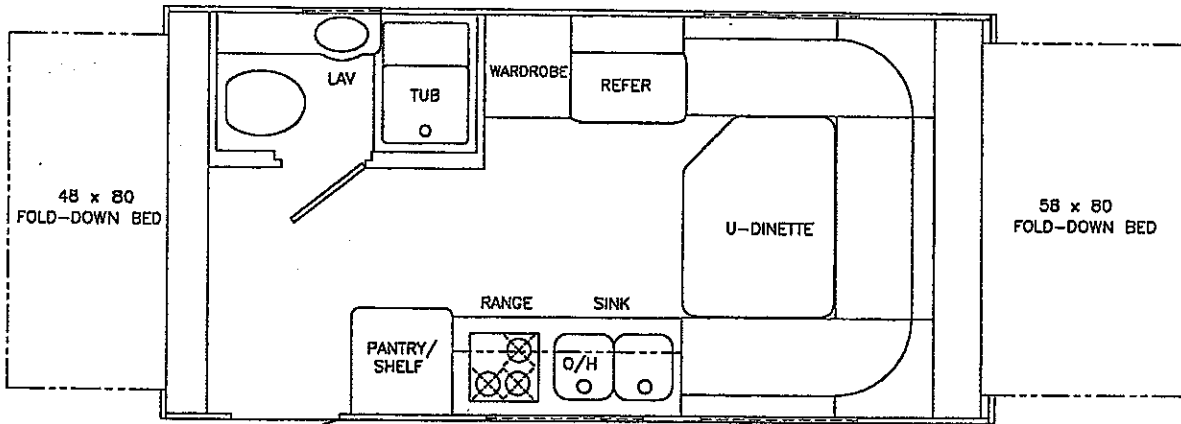
13,500 AIR CONDITIONER  
7,100 AIR CONDITIONER  
A & E AWNING  
MICROWAVE OVEN  
OVEN  
SPARE TIRE & CARRIER  
FRONT STABILIZER JACKS (16')  
SAFETY GLASS  
STEREO PREP  
AM/FM CD W/ 2 SPEAKERS  
AM/FM CASSETTE W/ 2 SPEAKERS  
TV ANTENNA W/CABLE HOOK UP  
MONITOR PANEL  
BUNK LIGHTS / W FAN  
OUTSIDE COOKTOP  
OUTSIDE SHOWER  
CSA

# KODIAK

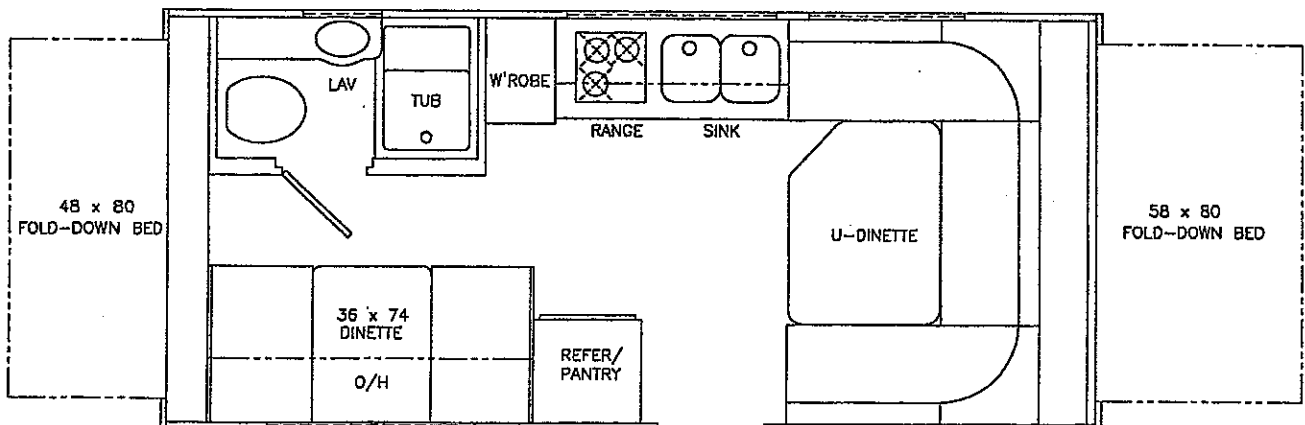
by Skamper Lite



K160 KODIAK



K190 KODIAK



K210 KODIAK