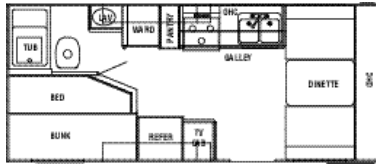




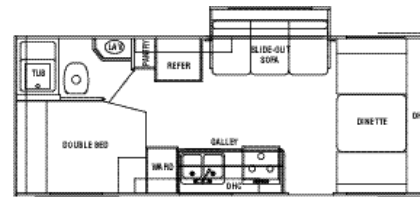
2002  
**Aero Lite**  
Seven's



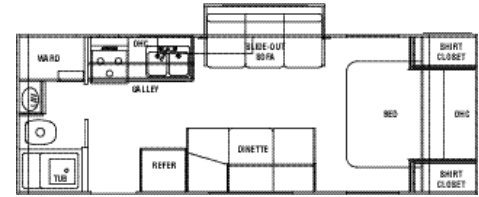
# 2002 Aero Lite Seven's



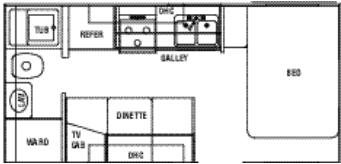
A21RDB



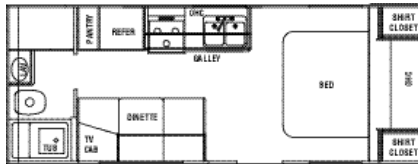
A23RDB



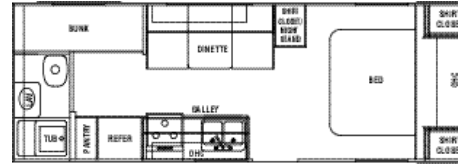
A25FBSL



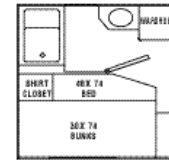
A19FB



A23FB



A25FBBH



OPT. DBL BED W/TWIN BUNK (23RDB)

## Weight Chart

	A19FB	A21RDB	A23FB	A23RDB	A25FBBH	A25FBSL
GVWR (lbs.)	N/A	4900	N/A	N/A	4580	4680
Gross Dry Weight (lbs.)	N/A	3008	N/A	N/A	3208	3308
Carrying Capacity (lbs.)	N/A	1892	N/A	N/A	1372	1372
Dry Hitch Weight (lbs.)	N/A	500	N/A	N/A	180	280
Length	19'	21'	23'	23'	25'	25'
Width	7'5"	7'5"	7'5"	7'5"	7'5"	7'5"
Height (add 14" for AC)	8'1"	8'1"	8'1"	8'1"	8'1"	8'1"
Fresh Water (gal.)	30	30	30	30	30	30
Gray Water (gal.)	36	36	36	36	36	36
Black Water (gal.)	26	26	26	26	26	26
LPG Capacity (2) (lbs.)	40	40	40	40	40	40
Radial Tire Size	14	14	14	14	14	14
Optional Awning Size	14	14	16	16	16	16

Product information, specifications, and photography in this brochure were as accurate as possible at time of printing. Photographs may contain some features that are optional on your vehicle. Since we continually strive to improve our products, actual products may differ. Prices and specifications are subject to change without notice. All capacities are approximate and dimensions are nominal. Some features or options may be different or unavailable in Canada.

## Standard and Optional Features

### EXTERIOR

AL-KO Kober galvanized steel chassis  
 AL-KO Kober independent rubber ride torsion suspension system  
 Single step  
 14" radial tires  
 2-20 lb. LP bottles with tray and ABS cover  
 26" radius entry door  
 Upgraded exterior graphics  
 Colored fender skirts  
 Vinyl one piece seamless rubber roof (12 year warranty)  
 Welded aluminum laminated construction (walls, roof and floor)  
 Laminated Darco underbelly

### INTERIOR

Sub floor thermostatically controlled heated fresh water tank

Residential grade linoleum  
 5 cubic foot gas electric refrigerator  
 Mini blinds  
 TV shelf  
 Wallpaper borders  
 Power roof vent in bathroom  
 Oak mortise and tenon cabinet doors  
 Pre-wired for A/C  
 Fire extinguisher  
 Smoke detector  
 LP detector  
 20,000 ducted BTU furnace  
 6 gallon gas water heater with bypass  
 Three burner cooktop  
 Medicine cabinet  
 Fiber link bathtub w/shower curtain

Towel storage bin in bathroom

### OPTIONS

Heated waste holding tanks  
 DSI water heater  
 Spare tire with cover  
 13.5 A/C  
 Outside shower  
 AM/FM CD with 2 speakers  
 Microwave  
 Oven with range  
 TV antenna  
 Awning  
 Monitor panel  
 Stove cover  
 Norcold double door refrigerator  
 Water filter  
 Tub surround  
 Stabilizer jacks



Aero Coach, Inc.

305 Steury Avenue • Goshen, IN 46528  
 574.534.1224 • www.aerocoachinc.com



This brochure is printed on recycled paper as part of Thor's corporate effort to minimize waste and conserve our natural resources. Providing safe, fuel-efficient recreational vehicles is Thor's way of further demonstrating our role as the industry leader in safeguarding our nation's environment.

