



2002
SKAMPER
F I F T H W H E E L

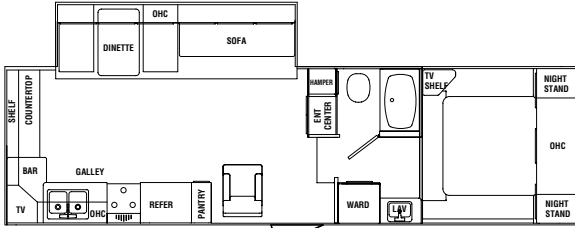


Surround yourself with nature's splendor in your very own luxury suite.

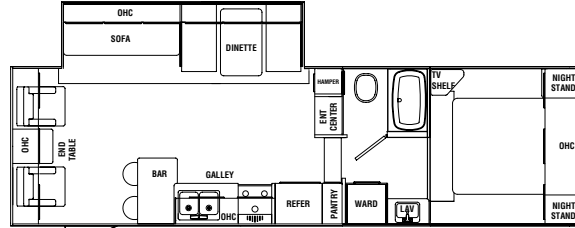
2002 SKAMPER

FIFTH WHEEL

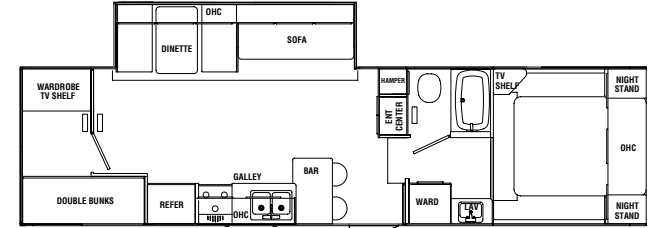
Floor plans



S27RK



S27RL



S28BH

Weight Chart

	S27RK	S27RL	S28BH
GVWR (lbs.)	N/A	8340	11280
Gross Dry Weight (lbs.)	N/A	6663	6753
Carrying Capacity (lbs.)	N/A	1677	4527
Dry Hitch Weight (lbs.)	N/A	1340	1120
GAWR (lbs.)	N/A	7000	10160
Traveling Length	N/A	30'7"	31'7"
Width	8'	8'	8'
Height	10'9"	10'9"	10'9"
Fresh Water (gal.)	50	50	50
Gray Water (gal.)	72	72	72
Black Water (gal.)	36	36	36
LPG Capacity (lbs.)	60	60	60
Radial Tire Size	14	17	15
Optional Awning Size	20'	20'	20'

Standard and Optional Features

EXTERIOR

- 8" I-beam Venture frame
- AL-KO leaf spring axles
- Triple entry step
- 2 stabilizer jacks
- 50 gallon heated sub floor fresh water tank
- 35 gallon black holding tank
- Dual 35 gallon gray holding tank
- Welded aluminum laminated floor
- Laminate aluminum roof trusses w/air duct
- Welded aluminum laminated walls
- ABS front cap
- 30" entrance door
- Folding exterior grab handle
- Scare light
- Laminated Darco underbelly
- Colored fender skirts
- White spoke rims
- Patio light

INTERIOR

- Norcold double door refrigerator

- 17" oven with cooktop
- Range hood with light and fan
- 30,000 BTU ducted furnace
- 6 gallon gas water heater
- Fire extinguisher
- Smoke detector
- LP detector
- Wallpaper border
- Trash bag holder
- Spice rack
- Monitor panel
- Pantry w/adjustable shelves
- Bedroom carpet
- Under bed storage w/struts
- Tub surround
- Medicine cabinet
- Mini blinds
- TV shelf
- Power vent in the bathroom
- Fiber link bathtub w/shower curtain
- Oak mortise and tenon cabinet doors
- Pre-wired for A/C
- Laundry hamper

OPTIONS

- Spare tire, carrier and cover
- Heated waste holding tanks
- Water heater gas, electric DSI 6 gallon
- Exterior shower
- Stereo AM/FM CD
- Microwave
- Awning
- TV antenna w/booster and cable hookup
- Stove cover
- Swivel rocker chair
- Oak cathedral raised panel overhead doors
- Front power landing jacks
- Skylite over tub
- Roof rack and ladder
- Free standing table and 4 chairs
- Fantastic roof fan vent
- Water filter system
- Hide-a-bed
- 15,000 A/C
- 13,500 A/C

"2 + 2" Warranty

Thor's Exclusive Full 2-Year Standard Warranty — We're so confident in the design and construction of our products that they are covered by Thor's exclusive Full 2-Year Standard Warranty: "hitch-to-bumper" coverage to protect your RV investment. The best protection in the RV industry - by far!

Product information, specifications, and photography in this brochure were as accurate as possible at time of printing. Photographs may contain some features that are optional on your vehicle. Since we continually strive to improve our products, actual products may differ. Prices and specifications are subject to change without notice. All capacities are approximate and dimensions are nominal. Some features or options may be different or unavailable in Canada.



Aero Coach, Inc.

305 Steury Avenue • Goshen, IN 46528
574.534.1224 • www.aerocoachinc.com



This brochure is printed on recycled paper as part of Thor's corporate effort to minimize waste and conserve our natural resources. Providing safe, fuel-efficient recreational vehicles is Thor's way of further demonstrating our role as the industry leader in safeguarding our nation's environment.

