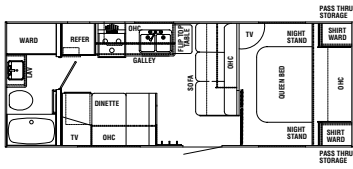


2002
SKAMPER
U L T R A

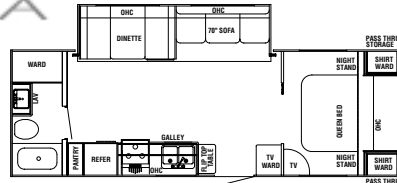


Unbelievable value. All aluminum framing. Full sized livability.

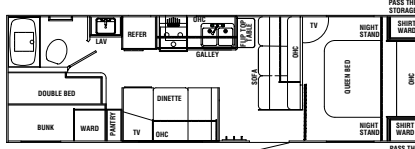
2002 SKAMPER ULTRA



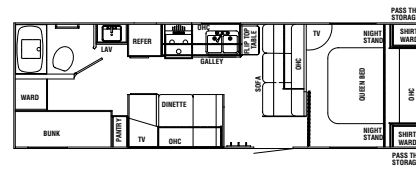
S26H



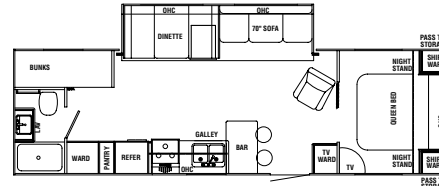
S27N



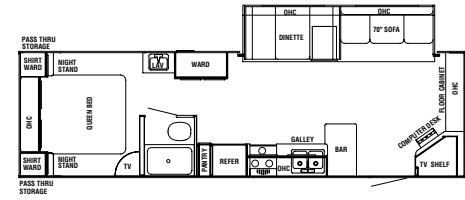
S28S



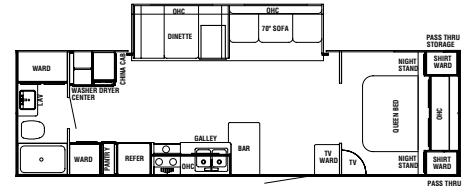
S28SB



S30R



S30FL



S30W

Weight Chart

	S26H	S27N	S28S	S28SB	S30R	S30FL	S30W
GVWR (lbs.)	6220	7410	7580	7580	7480	N/A	7360
Gross Dry Weight (lbs.)	4080	4868	4388	4388	5328	N/A	5673
Carrying Capacity (lbs.)	2140	2942	3192	3192	2152	N/A	1687
Dry Hitch Weight (lbs.)	500	410	580	580	480	N/A	360
GAWR (lbs.)	5720	7000	7000	7000	7000	N/A	7000
Length	26'8"	28'10"	30'4"	30'4"	32'5"	N/A	32'5"
Width	8'	8'	8'	8'	8'	8'	8'
Height (add 14" for A/C)	9'6"	9'6"	9'6"	9'6"	9'6"	9'6"	9'6"
Fresh Water (gal.)	50	50	50	50	50	50	50
Gray Water (gal.)	36	36	36	36	36	36	36
Black Water (gal.)	36	36	36	36	36	36	36
LPG Capacity (2) (lbs.)	63	63	63	63	63	63	63
Radial Tire Size	14	14	14	14	14	14	14
Awning Size	16'	16'	16'	16'	16'	16'	16'

Product information, specifications, and photography in this brochure were as accurate as possible at time of printing. Photographs may contain some features that are optional on your vehicle. Since we continually strive to improve our products, actual products may differ. Prices and specifications are subject to change without notice. All capacities are approximate and dimensions are nominal. Some features or options may be different or unavailable in Canada.



Aero Coach, Inc.

305 Steury Avenue • Goshen, IN 46528
574.534.1224 • www.aerocoachinc.com



This brochure is printed on recycled paper as part of Thor's corporate effort to minimize waste and conserve our natural resources. Providing safe, fuel-efficient recreational vehicles is Thor's way of further demonstrating our role as the industry leader in safeguarding our nation's environment.

Floor Plans

Standard Features

- EXTERIOR
 - 8" I-beam Venture frame
 - AL-KO leaf spring axles
 - Bumper with sewer storage hose
 - Double entry step
 - 2-30 lb. LP bottles
 - 55 gallon fresh water tanks
 - 35 gallon black holding tanks
 - 35 gallon grey holding tanks
 - Aluminum welded laminated floors
 - Laminated aluminum roof trusses
 - Welded aluminum laminated walls
 - European style white spoke rims
 - 30" radius entry door
 - Colored ABS wheel skirt
 - Stabilizer jack (slide-out models)
 - Awning
 - Patio light
 - Cable TV hook-up
- UPGRADES
 - Upgraded interior design and fabrics
 - Norcold double door refrigerator
 - Mini blinds
 - TV shelf
 - Wallpaper borders
 - Power roof vent in bathroom
 - Oak mortise and tenon cabinet doors
 - Pre-wired for A/C and roof vent
 - Fire extinguisher
 - Smoke detector
 - LP detector
 - 30,000 ducted BTU furnace
 - 6 gallon gas DSI water heater with bypass
 - Range with three burner cooktop
 - Shower curtain
 - Medicine cabinet
 - Fiber link bathtub
 - Adjustable pantry shelves
 - Knife rack
 - Trash bag holder
 - Spice rack
 - Pass through storage under bed
 - Monitor panel

- INTERIOR
 - Sub floor thermostatically controlled heated fresh water tank
 - Residential grade linoleum

- OPTIONS
 - Heated waste holding tanks
 - Swivel chair
 - Spare tire with cover
 - 13.5 A/C
 - Exterior cooktop
 - Outside shower
 - AM/FM CD with 4 speakers
 - Microwave
 - TV antenna
 - Stove cover
 - Free standing table and chairs
 - Carpet and pad in bedroom
 - Carpet and pad in living room
 - Fantastic fan in bedroom
 - Triple entry step

