

Fifth wheels feature a walk thru bath with laundry hamper, neo-angle shower and glass door

Queen bed has gas strut lifters to access extra storage

The spacious kitchen is conveniently functional with deep cabinets, large-size appliances, residential double sink, and adjustable pantry shelves.

2003 AEROSTAR



JUST SHOW YOUR CARD AND GO!

We build our products better and we protect you with the industry's best warranty coverage, but we know that sometimes things can go wrong on the road. So when you become the proud owner of a new Aerostar, it's just the beginning of our exclusive 'round-the-clock Customer Care Program.

Customer Care provides complete and fully paid roadside assistance, emergency road service, and special warranty support benefits that go with you wherever you travel. You get immediate access to fast, dependable service when and where you need it.

Add our toll-free warranty and service appointment assistance and a technical assistance hot line and you have the security and peace of mind of full-time support.

Our exclusive 24-hour Customer Care benefits include:

- Fully paid emergency roadside assistance
- Free jump starts
- Free fuel delivery
- Free lock-out service
- Free on-site mechanical service in the event of a breakdown
- 24-hour technical hot line
- Toll-free service appointment scheduling nationwide
- Warranty service assistance at over 6,800 qualified service agencies
- Free customer trip routing and map service.

We want you to be able to enjoy your new trailer or fifth wheel to the fullest. That's why we've provided Aerostar Customer Care to take care of the problems that could spoil your travels.

THE INDUSTRY'S BEST WARRANTY... BY FAR!

We're so confident in the design and construction of our products that they are covered by Thor's exclusive Full 2-Year Standard Warranty: "Hitch-to-bumper" coverage to protect your RV investment. The best protection in the RV industry—by far:

Your Full 2-Year Warranty Includes:*

- Refrigerator
- Power converter
- TV antenna
- Water pump
- And much more...
- Slide-out Mechanisms
- Water heater
- Microwave
- Doors
- LP tanks
- Range
- Electrical
- Awnings
- Furnace
- Plumbing
- Lavatory
- House stereo

*See individual company warranty statements for details.

Why a Thor Product Is Your Best RV Value:

Thor Industries, Inc., listed on the New York Stock Exchange, proudly traces its history back over seventy years to the pioneering days of the RV industry with the founding of Airstream, the industry's oldest and most renowned brand. Our total commitment to quality and our philosophy of putting our customers first has led to our continuous growth. Today, Thor is the largest builder of RVs. Thor's strong financial condition and years of solid growth are your assurance that we will be here to serve you for years to come. We think this extra peace of mind is important when you are making a significant investment. Because our customers are always #1 with us, we work harder than other manufacturers to satisfy you.

Product information, specifications, and photography in this brochure were as accurate as possible at time of printing. Photographs may contain some features that are optional on your vehicle. Since we continually strive to improve our products, actual products may differ. Prices and specifications are subject to change without notice. All capacities are approximate and dimensions are nominal. Some features shown are optional and may be different or unavailable in Canada. Vehicles are designed for recreational use only and not intended for use as a primary residence.

Your Local Dealer:

Aerostar invites you to check out the following companies to further enhance your RV experience:



rvaa.com



reeseprod.com



rbwindustries.com



funroads.com



trailair.com



This brochure is printed on recycled paper as part of Thor's corporate effort to minimize waste and conserve our natural resources. Providing safe, fuel-efficient recreational vehicles is Thor's way of further demonstrating our role as the industry leader in safeguarding our nation's environment.



THOR
AMERICA'S BEST RV VALUE

305 Steury Ave.
Goshen, IN 46528
(574) 534-1224
www.aero-rv.com

D-70-087

©Thor Industries, Inc.

Litho U.S.A.

2003



ADVENTURE IN THE MAKING

AEROSTAR shines with high-end quality while its lightweight design provides versatility for today's RV living.

Luxurious interiors radiate a sophisticated style created with rich fabrics and fine cabinetry along with an impressive collection of features and amenities.

Aerostar features an aluminum framed laminated fiberglass superstructure (walls, roof & floor). This premium design gives families tremendous value for their investment.



27RL features large panoramic windows and quality furnishings built for long-term beauty, comfort, and value.



30R in Zelda Green

Tile-like linoleum, oak cabinet doors, oak trimmed slide-out all standard!

FABRICS



Huron Blue

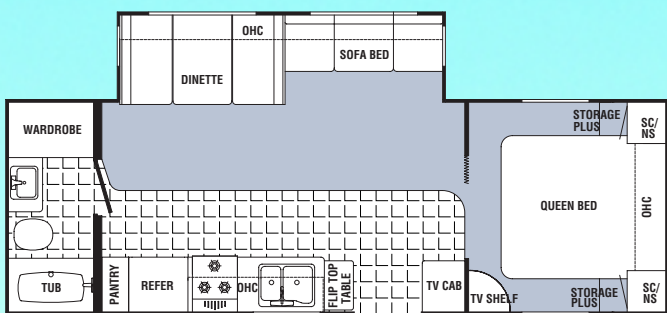


Amish Green

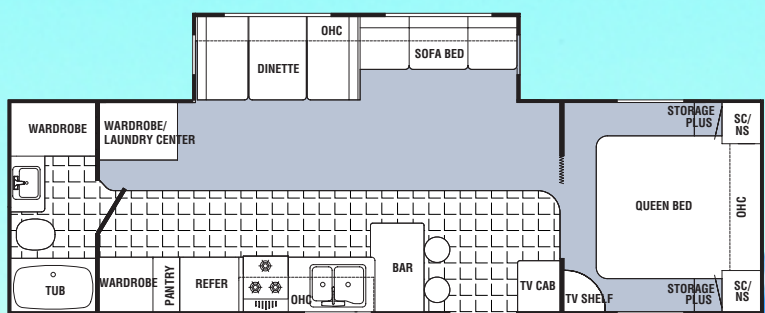


Zelda Rose or Green

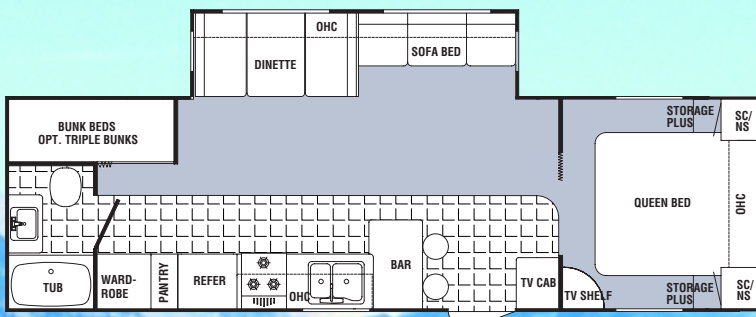
2003 AEROSTAR TRAVEL TRAILER FLOOR PLANS



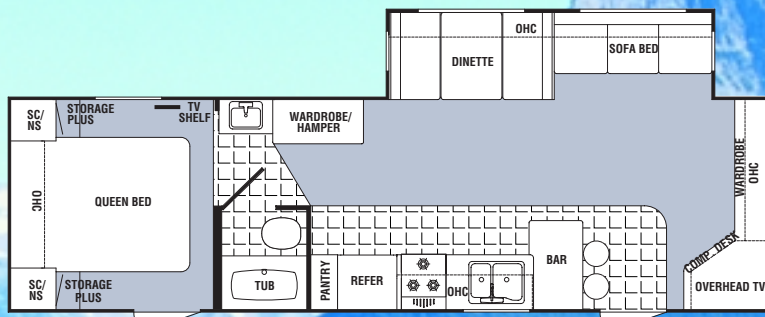
A27N



A30W

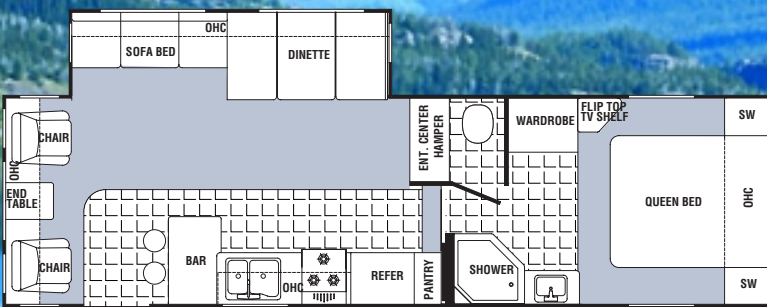


A30R

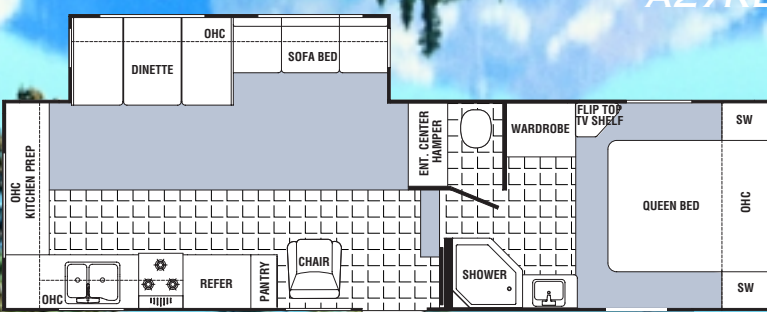


A30FL

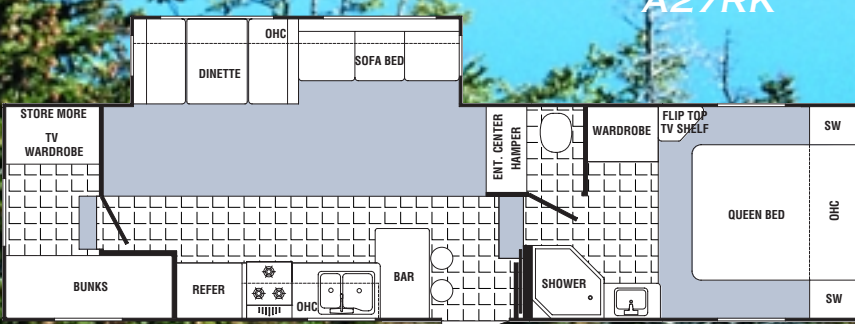
2003 AEROSTAR FIFTH WHEEL FLOOR PLANS



A27RL



A27RK



A28BH

2003 AEROSTAR STANDARDS & OPTIONS

	TRAILERS	FW
Standard Exterior Features		
I-beam cambered chassis	•	•
AL-KO independent torsion axle suspension	•	•
EPDM one-piece seamless rubber roof	•	•
Corrosion free laminated polypropylene underbelly	•	•
Laminated aluminum roof, floor, walls	•	•
Laminated aluminum truss roof construction	•	•
Four wheel electric brakes	•	•
Powder coated entry step	•	•
Rain gutter with corner downspouts	•	•
Four corner stabilizer jacks (Rear only on 5th wheels)	•	•
Scare light	•	•
Entry assist handle	•	•
Ozite carpet in pass thru storage areas	•	•
Easy lube axles	•	•
30" radius entry door	•	•
15" radial tires	•	•
ABS colored fender skirts	•	•
Automotive D-seal tinted radius clamp ring windows	•	•
Front ABS cap	•	•
ABS skirt and body moldings	•	•
Standard Appliances and Electrical		
Sub floor thermostatically controlled heated fresh water tank	•	•
Norcold double-door gas/electric refrigerator	•	•
Monitor panel	•	•
30M BTU forced air furnace with wall thermostat	•	•
Ducted heat	•	•
Pre-wired for A/C	•	•
Demand water pump	•	•
Three burner high output range with oven	•	•
Pre-wired for cable TV	•	•
Pre-wired for stereo	•	•
Range hood with light and fan	•	•
6 gallon gas/DSI water heater with bypass	•	•
Fire extinguisher	•	•
LP detector	•	•
Smoke detector	•	•
Solid state converter with built-in battery charger	•	•
Patio light	•	•
Standard Interior Features		
Shower curtain	•	•
Residential tile-like linoleum	•	•
Power roof vent in bathroom	•	•

	TRAILERS	FW
Standard Interior Features (continued)		
Wallpaper border	•	•
Bedroom TV shelf	•	•
Mini blinds throughout	•	•
Medicine cabinet with mirror (most models)	•	•
Fiberlink bathtub/shower	•	•
5" thick dinette cushions	•	•
Trash bag holder	•	•
Coat rack	•	•
Magazine rack	•	•
Double bowl white acrylic sink w/high rise faucet & dual sink covers	•	•
Oak mortise tenon cathedral cabinet doors	•	•
Glass décor light over the dinette	•	•
Laundry hamper (most models)	•	•
Pot and pan drawer under dinette	•	•
Pin-up lights in the bedroom	•	•
Adjustable pantry shelves	•	•
ABS tub surround	•	•
Queen bed with matching bedspread/headboard	•	•
Optional Features		
Heated waste holding tanks	•	•
DSI water heater (gas/electric 6 gallon)	•	•
DSI water heater (gas/electric 10 gallon A30W only)	•	•
Spare tire with carrier	•	•
13.5 BTU A/C	•	•
15.0 BTU A/C	•	•
Free standing table w/4 chairs	•	•
Washer/Dryer - A30W only	•	•
Aluminum alloy wheels	•	•
Electric front jacks	•	•
TV antenna	•	•
Spray-away wash station	•	•
AM/FM/CD Player w/4 speakers and weatherband	•	•
Day/night shades	•	•
Microwave	•	•
Awning	•	•
Stove cover	•	•
Water filter system w/spout	•	•
Vitco RVQ grill	•	•
ABS slide tray (pass thru storage)	•	•
Hide-a-bed sofa	•	•
Fantastic vent	•	•
Roof rack and ladder	•	•
Safety glass	•	•

SPECIFICATIONS

AEROSTAR	A27N	A30R	A30FL	A30W	A27RK	A27RL	A28BH
Length	29' 4"	32' 10"	32' 10"	32' 10"	30' 11"	30' 11"	31' 7"
Exterior Width	8'	8'	8'	8'	8'	8'	8'
Exterior Height	10' 8"	10' 7"	11' 10"	10' 7"	11' 8"	11' 8"	11' 8"
Hitch Dry Weights (lbs.)	576	728	1170	672	1130	1264	1266
Gross Vehicle Wt. (lbs.)	7576	7728	8170	7672	9930	10064	10066
Unloaded Vehicle Wt.	5472	5802	5816	5994	6762	6936	7144
Net Cargo Capacity	2104	1926	2354	1678	3136	3130	2954
Fresh Water Cap. (gal.)	50	50	50	50	50	50	50
Dual Holding Tanks Cap.	72	72	72	72	108	108	108
Tire Size	ST205/75R15	ST205/75R15	ST205/75R15	ST205/75R15	ST225/75R15	ST225/75R15	ST225/75R15
Furnace Size (BTU's)	30	30	30	30	30	30	30