

TRAVEL TRAILERS  
& FIFTH WHEELS

COLORADO 2003



# COLORADO



*Wish You Were Here!*





**S**urround yourself with the beauty of Colorado.

Colorado travel trailers and fifth wheels are a destination all in themselves. With comfortable home-like interiors, easy-living features, and spacious floor plans, Colorado is the perfect place to spend good times with family and friends. Just like the state that inspired their name, Colorado travel trailers and fifth wheels are both rugged and beautiful.



*33RL in Haze Taupe*

*Built-in computer desk and entertainment center have family appeal.*



*33RL in Haze Taupe*

*Innovative design creates spacious, home-like living quarters.*

## Fabrics



*Acadia-Rose or Green*



*Haze-Taupe or Green*





31FK in Acadia Rose



The extra roomy bath area features a large neo-angle shower.



Comfort is a top priority in the bedroom along with generous storage space. Shown with optional oak fascia on bed slide

33RL in Haze Green



Heather-Rose or Blue



Territory Rose

Wish You Were Here!

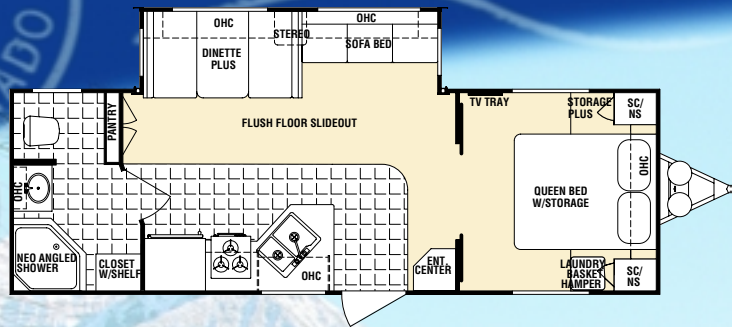




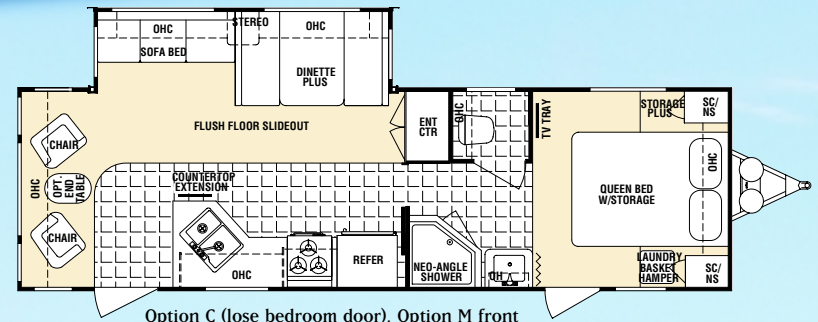
# 2003 Colorado Floor Plans

## Travel Trailers

26FB

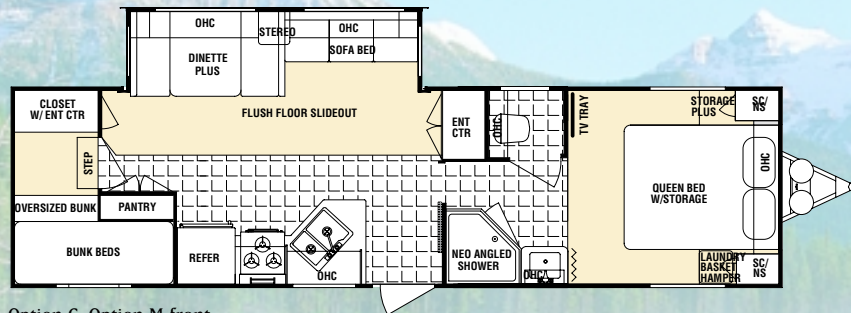


30RL



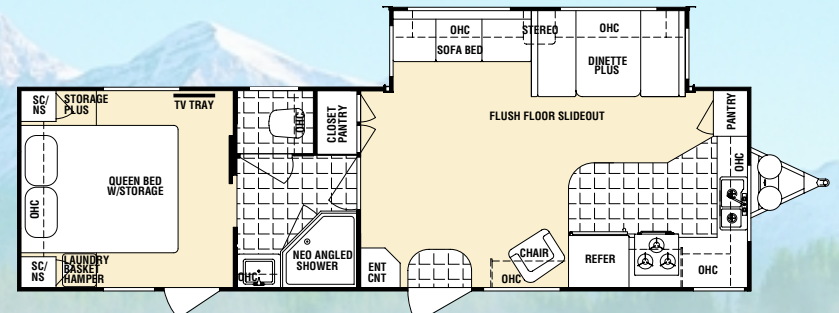
Option C (lose bedroom door), Option M front

31BK



Option C, Option M front

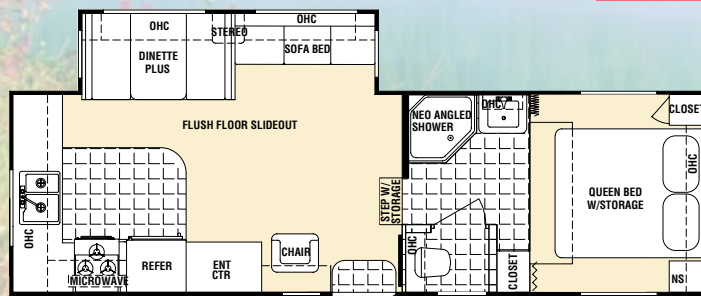
31FK



Option C (lose bedroom door), Option M rear

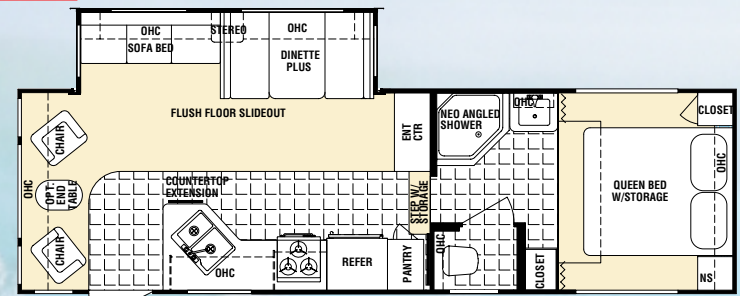
## Mid-Profile Fifth Wheels

26RK



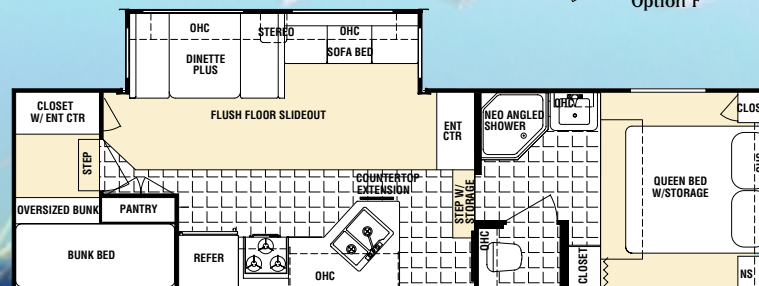
Option F

27RL



Option F

28BH



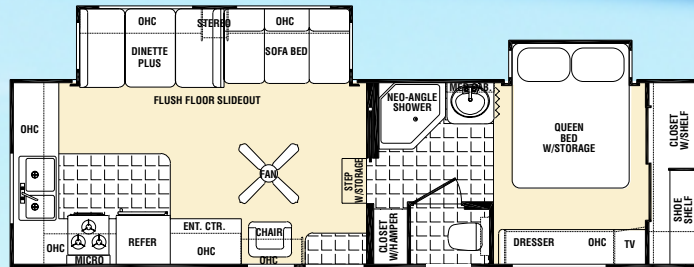
Option F

# 2003 Colorado Floor Plans

## High-Profile Fifth Wheels

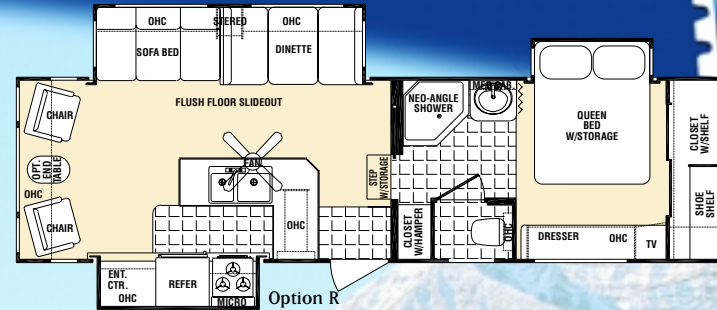


28RK



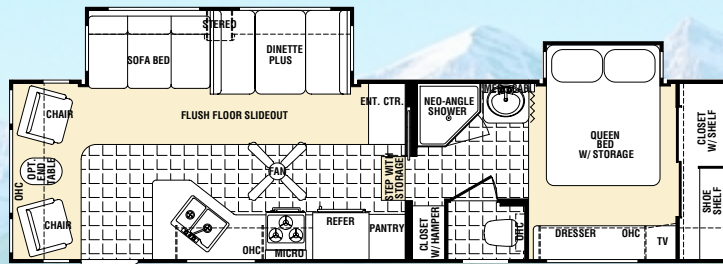
Option R

29KS



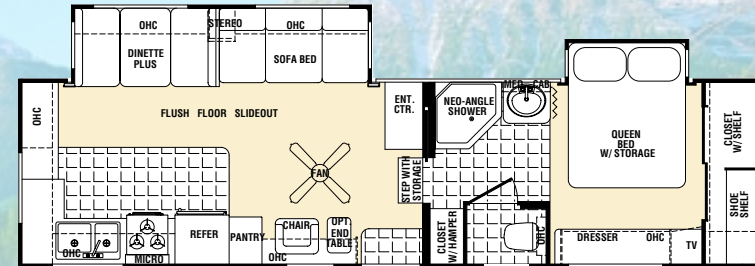
Option R

29RL



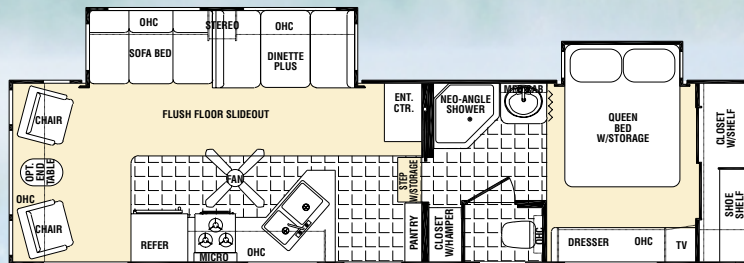
Option R

30RK



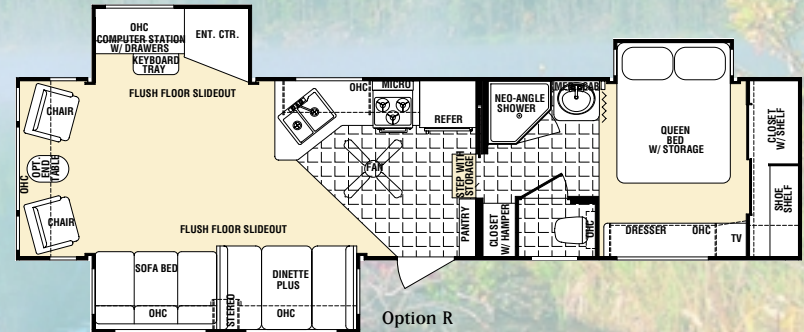
Option R

31RL



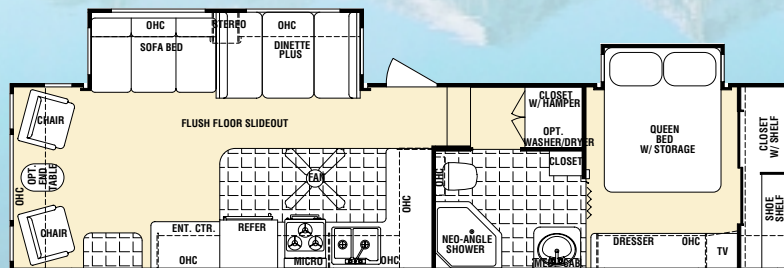
Option R

33RL



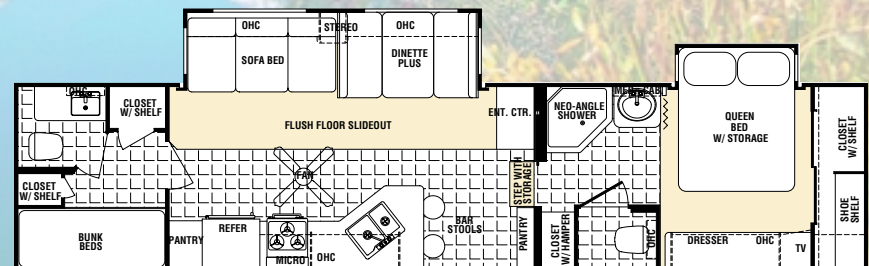
Option R

34RL



Option R

35BH



Options R, N, P, B, O

Wish You Were Here!

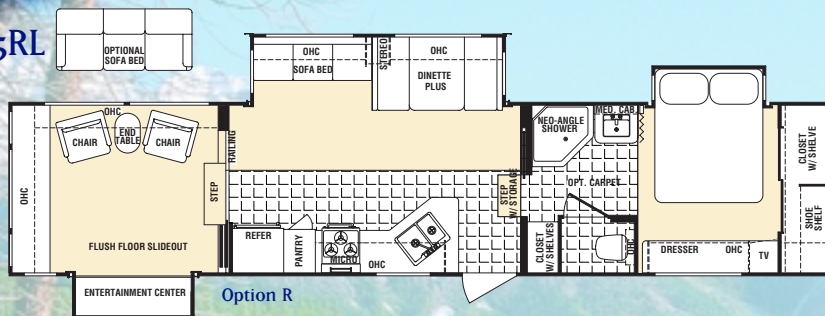




# 2003 Colorado Floor Plans / Standards & Options

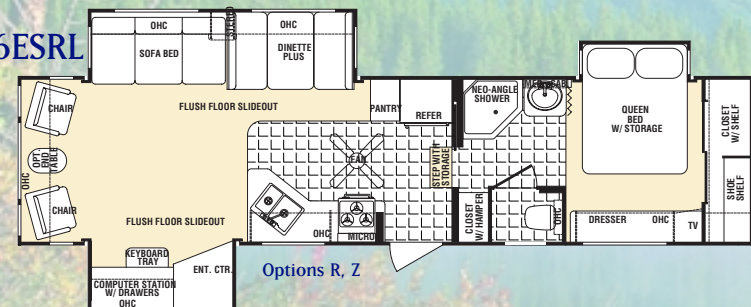
## High-Profile Fifth Wheels (cont.)

35RL



Option R

36ESRL



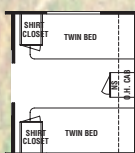
Options R, Z

## Optional Floor Plans

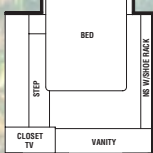
B



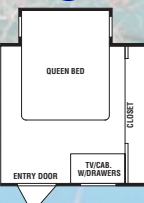
C



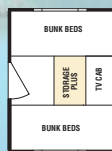
F



M



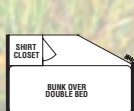
N



O



P



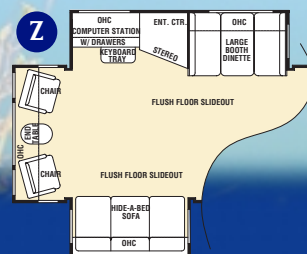
R



R



Z



Hi-Profile Mid-Profile Travel Trailer

### Exterior

Twin 30# LP bottles with auto changeover	STD	STD	STD
One piece EPDM rubber roof	STD	STD	STD
Triple entry step	STD	STD	STD
Flush door latch with dead bolt lock	STD	STD	STD
Radius jalousie tinted windows	STD	STD	STD
Enclosed dump valves	STD	N/A	N/A
Seamless rotocast holding tanks	STD	N/A	N/A
Grab handle	STD	N/A	N/A
Black water flush	STD	N/A	N/A
Side slider windows in living room slide-outs	STD	STD	STD
Fiberglass laminated sidewalls	STD	STD	STD
Front fiberglass cap	STD	N/A	STD
Rear fiberglass cap	STD	OPT	OPT
Front ABS Cap	N/A	STD	N/A
Detachable 30 amp power cord	STD	STD	STD
Locking insulated baggage doors with finger pulls	STD	STD	STD
Large pass through outside storage compartments	STD	STD	STD
Rear stabilizer jacks	STD	STD	STD
Front stabilizer jacks	N/A	N/A	STD
Power front landing gear	STD	STD	N/A

### Construction

Aluminum framed fully laminated 2" sidewall	STD	STD	STD
Block foam insulation sidewall and floor	STD	STD	STD
5" Aluminum truss roof rafters with 3/8" decking full length	STD	STD	STD
5/8" Weyerhaeuser structure wood floor decking	STD	STD	STD
Roof line rain gutter with downspouts	STD	STD	STD
Laminated aluminum framed floor	STD	STD	STD
Fully enclosed/heated underbelly	STD	STD	STD
Track guided electric powered flush floor slide-out system in large living room slide	STD	STD	STD

### Running Gear

Cambered I-beam frame	STD	STD	STD
Electric brakes on all wheels	STD	STD	STD
ALKO leaf spring axles with Monroe shock absorbers	STD	N/A	N/A
ALKO leaf spring axles	N/A	STD	STD
ALKO Ultra-Lube hubs	STD	STD	STD

### Electrical

GFI protected 110-volt duplex receptacles	STD	STD	STD
110 volt outlet in slide room	STD	STD	STD
30 amp electrical service	STD	STD	STD
55 amp converter with charger	STD	STD	STD

### Bath

Medicine cabinet with mirror door and makeup lights	STD	STD	STD
Power roof vent	STD	STD	STD
Neo-angle shower/tub surround with glass door	STD	STD	STD
Thetford foot pedal toilet	STD	STD	STD
Towel bar, toothbrush holder and toilet paper holder	STD	STD	STD
Full length mirror on bath door	STD	STD	STD
Skylight above tub/shower	STD	STD	STD

### Appliances/Equipment

Microwave over range (residential w/light & fan)	STD	STD	STD
3 burner range w/oven and 1 high output burner (Piezo ignition)	STD	STD	STD
Folding range cover	STD	STD	STD
6 gallon gas/electric water heater with DSI	STD	STD	STD
Sink covers	STD	STD	STD
Demand water pump	STD	STD	STD
13.5 BTU ducted air conditioner	STD	STD	STD
Water heater bypass	STD	STD	STD
RCA surround stereo/cassette/5 CD player with remote	STD	STD	STD
DSS prep for satellite hook-up	STD	STD	STD
TV antenna with booster	STD	STD	STD
Cable TV hook-up	STD	STD	STD
Second TV outlet in bedroom	STD	STD	STD
8500 Series A&E awning	STD	STD	STD
Double door refer	STD	STD	STD
Double bowl acrylic kitchen sink	STD	STD	STD
Single lever faucet with sprayer	STD	STD	STD
Hydro-flame forced air, DSI furnace with wall thermostat	STD	STD	STD

### Interior

Fire extinguisher
Smoke detector
Solid oak cabinet doors - arched
Adjustable ceiling A/C ducts
Interior oak grab handle at entrance door (n/a 36ESRL)
Innerspring mattress
Bedspread with pillow shams and headboard
Booth dinette
Mini blinds
Swivel rocker(s)
Residential steel roller guides
Ceiling fan w/light kit
6'7" living room slide out interior height
Overhead cabinets with decorative glass doors in living room slide-out
Phone jack
Solid oak slide out fascia in living room

### Options

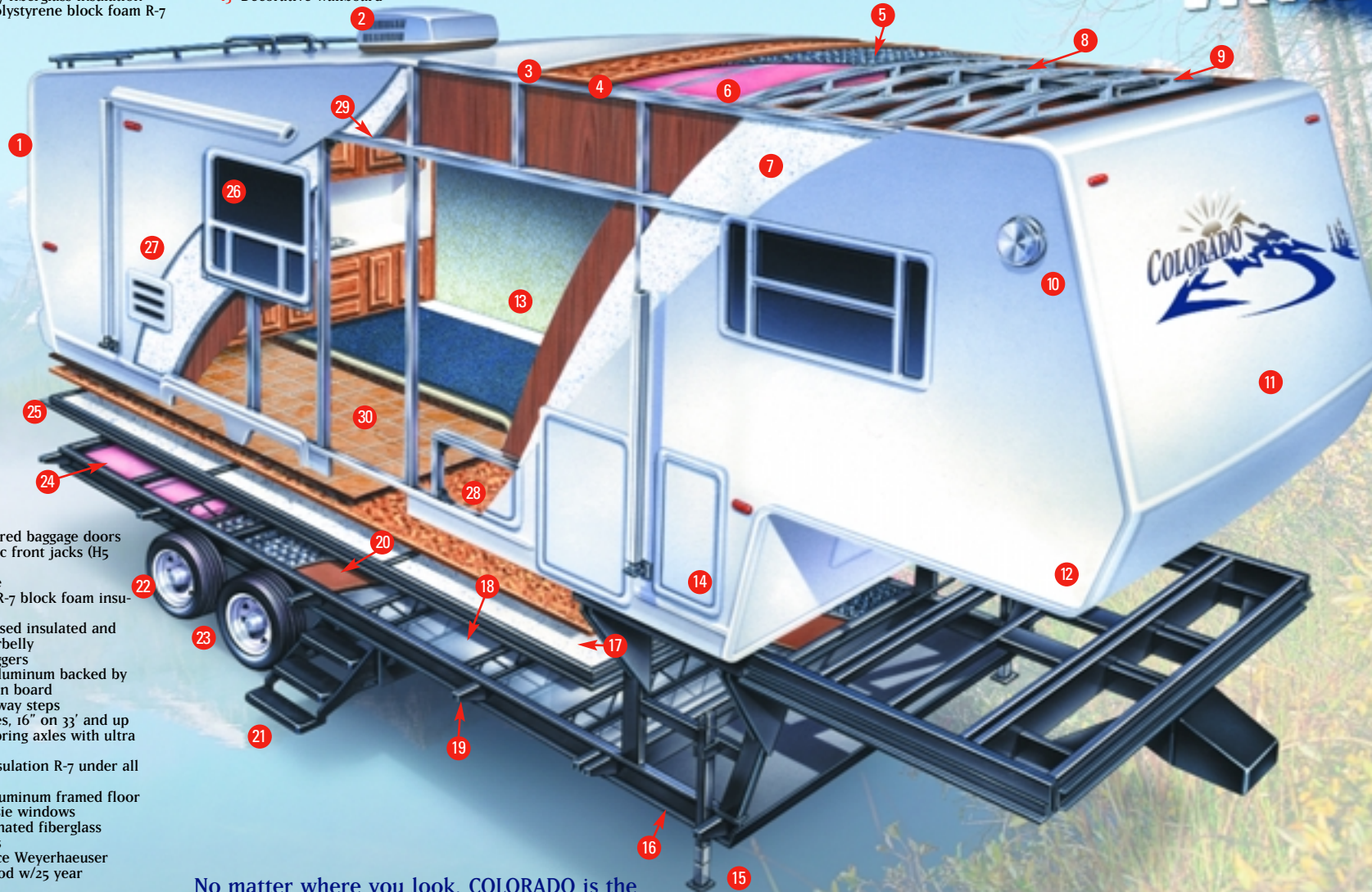
Poly air insulation in roof
Bedroom slide (TT/M5's - standard H5's)
Water filter with downspout
12 volt ultra heat pads
Gel coat fiberglass - H5's
Rear ladder
Reese 16K hitch
Quick release front jacks
Spare tire
16" tires (standard 34" and above)
Aluminum rims
Fiberglass rear cap (std. On H-5)
Sliding tray in front storage compartment - ABS
Sliding tray in front storage compartment - steel
Scare lights
Exterior Vitco grill
Generator prep
Generator installed (3.6 Onan LP)
Slide-out awning toppers
Duo pane solar reflective windows
15M BTU ducted A/C in place of 13.5M
50 Amp service
Day/night shades in place of mini blinds
Fluorescent lighting package
Rocker/recliner/glider IPO swivel rocker
Hide-a-bed sofa (N/A 29KS)
Hide-a-bed sofa with footrests (N/A 29KS)
End table with lamp (most floor plans)
Solid oak doors in slide-out overhead
24" Stereo TV
Fireplace
Carpeted bath hallway
Enclosed bath
Washer/dryer prep - 10 gallon gas/electric water heater, 50 amp service
10 gallon gas/electric water heater (available w/enclosed bath only - except 34RL)
Fantastic fan w/rain sensor & thermostat - living room
Extra large refer - 8 cubic foot
Ice maker (N/A 29KS)
Free standing dinette & 4 chairs
Round free standing dinette & 4 chairs
Solid oak slide out fascia on bedroom slide
2nd A/C in bedroom (13.5M BTU)
Fantastic fan w/rain sensor & thermostat - bedroom
Power tongue jack
Convenience package: Rechargeable flashlight, telephone, lock box, large entry assist handle, patio light, and spray-away wash station



STD	STD	STD
STD	STD	STD
STD	STD	STD
STD	STD	STD
STD	STD	STD
STD	STD	STD
STD	STD	STD
STD	STD	STD
STD	STD	STD
STD	STD	STD
STD	STD	STD
STD	STD	STD
STD	N/A	N/A
STD	N/A	N/A
STD	STD	STD
STD	STD	STD
STD	STD	STD

[illegible]

- 
- 1 Full fiberglass rear cap (H5, Opt. TT & M5)  
2 13,500 BTU ducted air conditioner  
3 One-piece EPDM rubber roof w/12 year manufacturer's warranty  
4 3/8" Weyerhaeuser structural wood decking w/25 year warranty  
5 Poly air insulation (opt.) takes roof to R-21  
6 2 layers of R-7 fiberglass insulation  
7 1-1/2" thick polystyrene block foam R-7 insulation
- 8 Ducted air conditioning through roof rafters  
9 5" aluminum truss roof rafters  
10 Scare light (optional)  
11 Full front cap w/clearance lights  
12 Smooth fiberglass filon exterior (gel coat optional)  
13 Decorative wallboard
- 14 Radius-cornered baggage doors  
15 6000# electric front jacks (H5 only)  
16 I-beam frame  
17 Polystyrene R-7 block foam insulation  
18 Totally enclosed insulated and heated underbelly  
19 Full 11" outriggers  
20 Galvanized aluminum backed by 1/8" thick luan board  
21 Triple fold away steps  
22 15" radial tires, 16" on 33' and up  
23 AL-KO leaf spring axles with ultra lube hubs  
24 Fiberglass insulation R-7 under all tanks  
25 Laminated aluminum framed floor  
26 Radius jalousie windows  
27 2" thick laminated fiberglass bonded walls  
28 5/8" one-piece Weyerhaeuser structure wood w/25 year warranty  
29 1-1/2" x 1-1/2" aluminum framed walls  
30 Tile-like vinyl flooring
- No matter where you look, COLOREDODGE is the new standard of quality—feature



No matter where you look, COLORADO is the new standard of quality—feature by feature.

## Wish You Were Here!



# The Industry's Best Warranty—By Far!

We're so confident in the design and construction of our products that they are covered by Thor's exclusive Full 2-Year Standard Warranty:  
"Hitch-to-bumper" coverage to protect your RV investment.

## Your Full 2-Year Warranty Includes:\*

- Refrigerator
- Slide-out Mechanisms
- LP tanks
- Furnace
- Power converter
- Water heater
- Range
- Plumbing
- TV antenna
- Microwave
- Electrical
- Lavatory
- Water pump
- Doors
- Awnings
- House stereo
- And much more...

\*See individual company warranty statements for details.

# Just Show Your Card & Go!

We build our products better and we protect you with the industry's best warranty coverage, but we know that sometimes things can go wrong on the road.

So when you become the proud owner of a new Colorado, it's just the beginning of our exclusive 'round-the-clock Customer Care Program.

Customer Care provides complete and fully paid roadside assistance, emergency road service, and special warranty support benefits that go with you wherever you travel. You get immediate access to fast, dependable service when and where you need it.

Add our toll-free warranty and service appointment assistance and a technical assistance hot line and you have the security and peace of mind of full-time support.

Our exclusive 24-hour Customer Care benefits include:

- Fully paid emergency roadside assistance
- Free jump starts
- Free fuel delivery
- Free lock-out service
- 24-hour technical hot line
- Toll-free service appointment scheduling nationwide
- Free on-site mechanical service in the event of a breakdown
- Warranty service assistance at over 6,800 qualified service agencies
- Free customer trip routing and map service.

At Colorado we want you to be able to enjoy your new trailer or fifth wheel to the fullest. That's why we've provided Colorado Customer Care to take care of the problems that could spoil your travels.

## COLORADO SPECIFICATIONS

	TRAVEL TRAILERS				MID-PROFILE 5th			HIGH-PROFILE 5th									
COLORADO	26FB	30RL	31BK	31FK	26RK	27RL	28BH	28RK	29KS	29RL	30RK	31RL	33RL	34RL	35BH	35RL	36ESRL
Length	TBD	32' 4"	34' 6"	33' 1"	29' 5"	30'	34' 2"	30' 9"	31' 9"	32' 11"	32' 8"	33' 8"	35' 8"	35' 5"	38' 4"	TBD	36' 7"
Exterior Width	TBD	8'	8'	8'	8'	8'	8'	8'	8'	8'	8'	8'	8'	8'	8'	TBD	8'
Exterior Height	TBD	10' 11"	10' 11"	10' 11"	11' 11"	11' 10"	11' 11"	12' 5"	12' 4"	12' 4"	12' 5"	12' 4"	12' 3"	12' 6"	12' 10"	TBD	12' 4"
Hitch Dry Wt.	TBD	882	1060	844	1168	1664	1470	2176	1992	2100	2084	2146	1970	1916	2280	TBD	1956
Gross Veh. Wt.	TBD	9682	9860	9644	9986	10464	10270	12576	12392	12500	14084	12546	12370	12316	12680	TBD	10712
Unloaded Veh. Wt.	TBD	7562	7692	7088	7258	8122	7728	9076	9834	9640	9660	9686	10530	10026	10750	TBD	9558
Net Cargo Cap.	TBD	2120	2168	2556	2728	2342	2542	3500	2558	2860	4424	2860	1840	2290	1930	TBD	3244
Fresh Water Cap.	TBD	47	47	47	47	47	47	40	42	42	42	42	42	42	42	TBD	42
Dual Hold. Tank	TBD	60	90	90	90	141	90	80	141	141	124	124	124	141	188	TBD	124
Tire Size	TBD	ST 225/75R15	ST 225/75R15	ST 225/75R15	ST 225/75R15	ST 225/75R15	ST 225/75R15	LT 225/75R15	LT 225/75R15	ST 225/75R15	ST 225/75R15	ST 225/75R15	LT 225/75R15	LT 235/85R16	LT 235/85R16	TBD	ST 235/85R16
Furnace Size	TBD	31 BTU	35 BTU	35 BTU	31 BTU	31 BTU	31 BTU	40 BTU	40 BTU	40 BTU	40 BTU	40 BTU	40 BTU	40 BTU	40 BTU	TBD	40 BTU

Product information, specifications, and photography in this brochure were as accurate as possible at time of printing. Photographs may contain some features that are optional on your vehicle. Since we continually strive to improve our products, actual products may differ. Prices and specifications are subject to change without notice. All capacities are approximate and dimensions are nominal. Some features shown are optional and may be different or unavailable in Canada.



This brochure is printed on recycled paper as part of Thor's corporate effort to minimize waste and conserve our natural resources. Providing safe, fuel-efficient recreational vehicles is Thor's way of further demonstrating our role as the industry leader in safeguarding our nation's environment.



# THOR

AMERICA'S BEST RV VALUE

305 Steury Ave. • Goshen, IN 46528  
574-534.1224 • Fax 574-533.3807  
Service, Warranty and Parts 574-537.0700  
www.colorado-rvs.com



Colorado invites you to check out the following companies to further enhance your RV experience:

Your Local Dealer