

COLORADO 2 • 0 • 0 • 5



Begin Your Adventures with Colorado!

TRAVEL TRAILERS & MID PROFILE FIFTH WHEELS



28RK in Canyon Sage

Designed for the discriminating RV owner, the 2005 Colorado surrounds you in luxury and value. Colorado boasts elegant travel trailer and fifth wheel floorplans with spacious and functional kitchens, master baths and bedroom suites. The dazzling residential interior decors set the product apart from the competition.

When it comes to value, Colorado is loaded with standard features that you won't find anywhere else. Solid wood cabinet doors and stiles, residential 36 ounce carpet with 1/2 inch pad, Armstrong flooring and a Zenith home entertainment system are just a few of the standard features that make Colorado your best RV Value.

But, there is more to a quality recreational vehicle than the interior.

Colorado's six-way welded aluminum superstructure (walls, roof, floors, front wall, and rear wall) means more strength and durability than the competition. The walls and floor are filled with polystyrene insulation and laminated to a durable high gloss fiberglass exterior. The aluminum trussed roof features a 5" crown and is insulated to R-14. Plus, the underbelly is insulated, heated and enclosed to protect electrical, plumbing and mechanical systems from the hazards of the road.

Take a closer look at Colorado and begin your adventures!

WITH COLORADO

The kitchens in Colorado are a chef's dream. Colorado features an eight cubic foot double door refrigerator with solid wood inserts, high output 3 burner range, backsplash, wood trimmed radius edged countertop, 1.3 cubic foot residential microwave, brushed nickel high rise faucet with water filter, brushed nickel hardware and lots of countertop and storage space.

With Colorado you will not sacrifice Quality for Style!



Colorado features solid hardwood raised panel cabinet doors throughout.



Colorado is the only brand in its class to use solid wood cabinet stiles (frames). No delamination or swelled cabinet frames. Hardwood cabinet stiles are screwed (not stapled) together and are stained to match the doors.



Unlike any other competitor, Colorado features 36 oz. residential carpet with 1/2" rebond padding.



Colorado features residential furniture and premium window treatments. Rocker recliners are available as an upgrade on most models.





Premium Bed & Bathrooms.

A quilted bedspread with decor coordinated headboard, pillows and curtains make Colorado's bedroom as cozy as home. A Bedslide option is available on most travel trailers and fifth wheels.



Colorado features a large master bath with neo-angle corner shower, skylight, glass shower door and a hand held brushed nickel shower head.

Colorado means more features for your dollar.

All Colorado Travel Trailers include:

- 15" Spare Tire and Carrier.
- Gel Coat Fiberglass Front Cap.
- High Gloss Fiberglass Laminated Sidewalls and a Designer Graphics Package.
- An enclosed heated underbelly protects plumbing and electrical wiring from the hazards of the road.

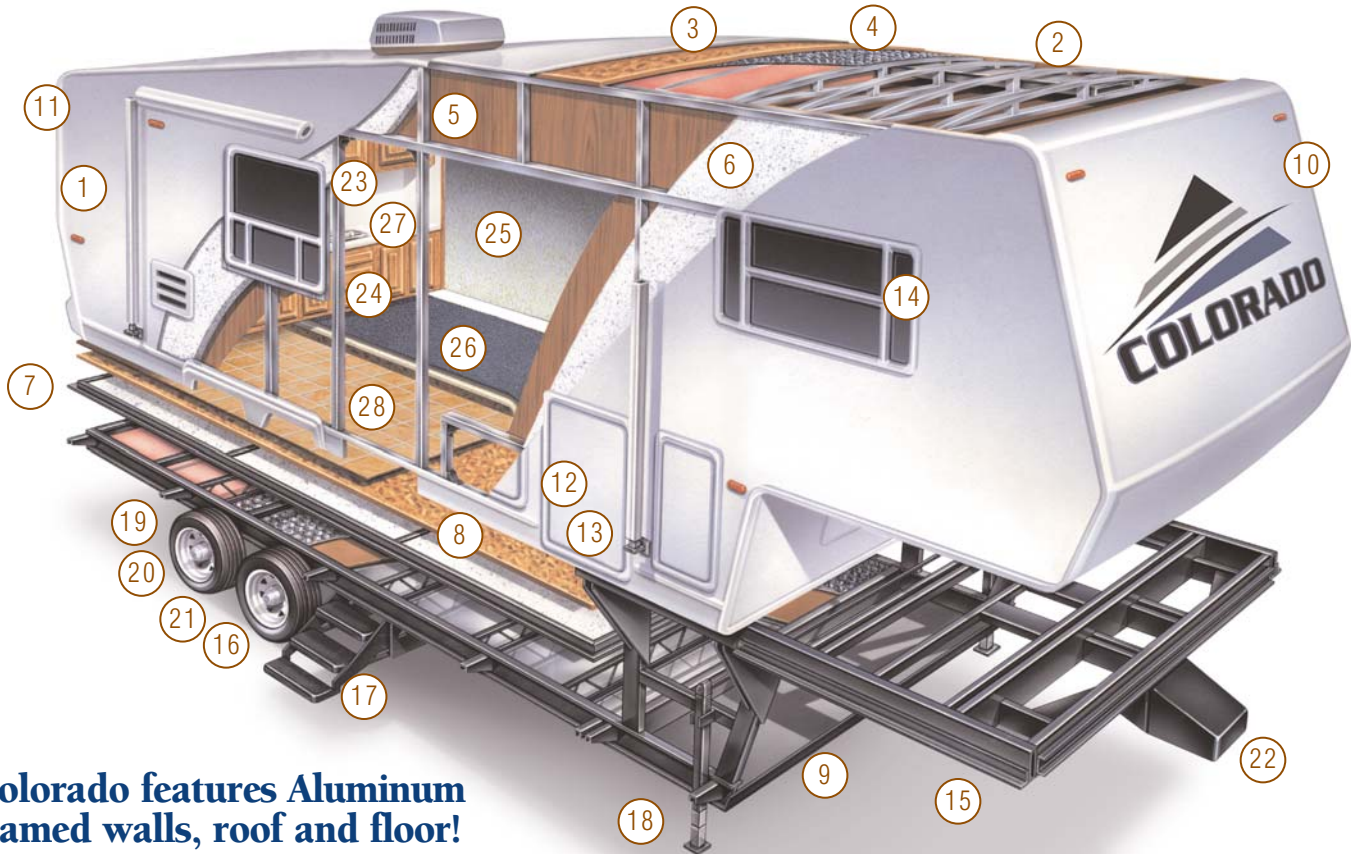


Ultra-Lube hubs are standard on Colorado. Maintenance is a snap with this feature.



A hot & cold water exterior shower includes a quick release coil hose with garden sprayer (Part of the Colorado Convenience Package).

6-Way Welded "Aluminum Cage" Construction



Colorado features Aluminum framed walls, roof and floor!

PREMIUM CONSTRUCTION

1. Fiberglass Laminated Sidewalls with Hi Gloss Fiberglass (33% more thickness)
2. 5" Welded Aluminum Truss Roof Rafters
3. Weyerhaeuser 3/8" **Structurewood** Decking with One Piece EPDM Rubber Roof Membrane
4. R14 Roof insulation with Aluminum Wrapped AC Ducting
5. Welded Aluminum Framed, Fully Laminated 2" Sidewall
6. Block Foam Insulation Sidewalls and Floor

7. Laminated/Welded Aluminum Framed Floor
8. One Piece Seamless 5/8" Weyerhaeuser **Structurewood** Floor Decking
9. Protected Insulated/Heated Enclosed Underbelly
10. Front Fiberglass Cap
11. Rear Fiberglass Wall
12. Extra Large Pass Through Outside Storage Compartments
13. Locking Insulated 1" Fiberglass Baggage Doors
14. Safety Glass Windows with 80% Tint

CHASSIS / SUSPENSION

15. Powder Coated 8" or 10" I-Beam Steel Chassis
16. Dual 5200 LB Leaf Spring Axles
17. Extra Deep 10" Folding Triple Entry Steps
18. 6000 Pound Electric Front Jacks (Fifth Wheels)
19. 15" Heavy Duty RV Radial Tires
20. Ultra-Lug Hubs
21. Leaf Spring Suspension System
22. Extended Hitch Pin

INTERIOR FEATURES

23. "KCMA Certified and Approved" Cabinet Faces, Drawer Fronts (Kitchen Cabinet Manufacturers Association)
24. Designer Raised Panel Cabinet Doors Throughout
25. Designer Sierra Beige Wallboard
26. 36 Ounce Nylon Carpet with 1/2" 6 lb. Rebond Carpet Pad
27. Armstrong linoleum with Tuff Guard



Attic Roof Vent allows moisture to escape, preventing condensation buildup. (Part of the Colorado Convenience Package)



Safety Glass Windows with 80% tint will keep Colorado cool on those warm days.



10" Triple Entry Step makes getting into Colorado a breeze.



30 Amp Detachable Power cord is marine grade and stores in an outside compartment when not in use saving valuable internal storage space.



Colorado includes a Black Tank flush nozzle, cable TV and satellite system hookups as standard features.

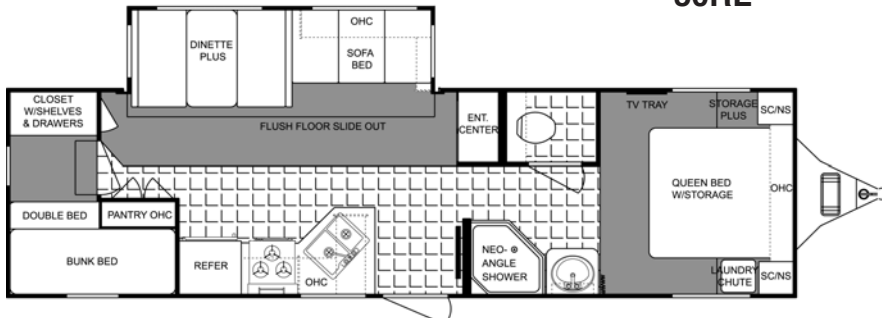
TRAVEL TRAILERS



26FB



30RL



31BK



BEDROOM SLIDE
(30RK and 31BK. N/A on 26FB)

31BK PAC-N-PLAY OPTION



Colorado offers a variety of tasteful interior decors.



Columbine Beige

Aspen Rose

Canyon Sage

A Feature Fabric with taupe microfiber accent - sofa & valances
B Secondary Fabric - lounge & dinette chairs

TRAVEL TRAILERS	26FB-DSL
Length	30 ft. 6 in.
Exterior Width	8 ft.
Exterior Height	10 ft. 9 in.
* Hitch Dry Weight	830
Gross Vehicle Weight	10,990
* Unloaded Vehicle Weight	6,464
Net Cargo Capacity	3,928
Fresh Water Capacity	56 gal.
Grey Water Capacity	40 gal.
Black Water Capacity	40 gal.
Tire Size	ST205/75R15(C)
Furnace Size (BTU's)	35,000
Water Heater	10 gal.

FIFTH WHEELS	27RL-M5
Length	30 ft.
Exterior Width	8 ft.
* Exterior Height	11 ft. 11 in.
Hitch Dry Weight	1,664
* Gross Vehicle Weight	11,824
Unloaded Vehicle Weight	7,250
Net Cargo Capacity	3,976
Fresh Water Capacity	56 gal.
Grey Water Capacity	80 gal.
Black Water Capacity	40 gal.
Tire Size	ST225/75R15(D)
Furnace Size (BTU's)	35,000
Water Heater	10 gal.

Vehicle loading - Every effort has been made to provide the greatest number of options for the recreational vehicle owner. Along with these choices comes the responsibility to manage the loads that are imposed by the choices that they remain within the manufacturer's specified chassis weight limits. Do not overload the recreational vehicle.

Dry weights based on standard features - Some optional equipment not included. Net carrying capacity (NCC) is determined by subtracting unloaded vehicle weight (UVW) from gross vehicle weight (GVWR) and includes fluids,

THE INDUSTRY'S BEST WARRANTY By Far!

We are so confident in the design and construction of our products that they are covered by Thor's Limited Warranty program.

Your Warranty includes:

One Year Bumper to Hitch Limited Warranty
Two Year Structural and Appliance Limited Warranty

See owner's manual for complete warranty details.

MEASUREMENTS

30RL-DSL	31BK-DSL
32 ft. 3 in.	35 ft. 2 in.
8 ft.	8 ft.
10 ft. 11.25 in.	11 ft. 0 in.
1,034	1,150
11,194	11,310
6,990	7,250
3,606	3,462
56 gal.	56 gal.
40 gal.	68 gal.
40 gal.	40 gal.
ST225/75R15(D)	ST225/75R15(D)
35,000	35,000
10 gal.	10 gal.

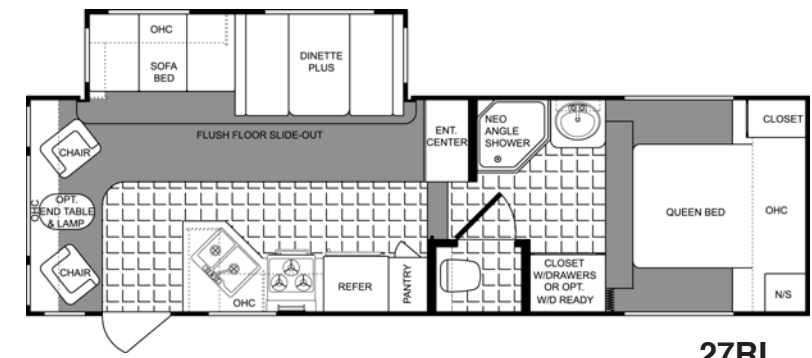
28BH-M5	28RK-M5	31RL-M5
32 ft. 5 in.	31 ft. 3 in.	34 ft. 6 in.
8 ft.	8 ft.	8 ft.
11 ft. 11 in.	11 ft. 11 in.	12 ft. 1 in.
1,480	1,566	1,560
11,640	11,726	11,992
8,149	7,794	7,196
2,893	3,334	3,236
56 gal.	56 gal.	56 gal.
80 gal.	80 gal.	80 gal.
40 gal.	40 gal.	40 gal.
ST225/75R15(D)	ST225/75R15(D)	ST225/75R15(D)
35,000	35,000	35,000
10 gal.	10 gal.	10 gal.

options and cargo. Liquid capacities and weights are approximations only.
Warning - This information is intended as a guide only. Weights of individual vehicles may vary. Consult your owner's manual for complete loading, weighing and towing instructions.
***UVW and Hitch Dry Weight** are base weights of units without options.
Each unit includes a weight label which lists specific weight information for that unit.

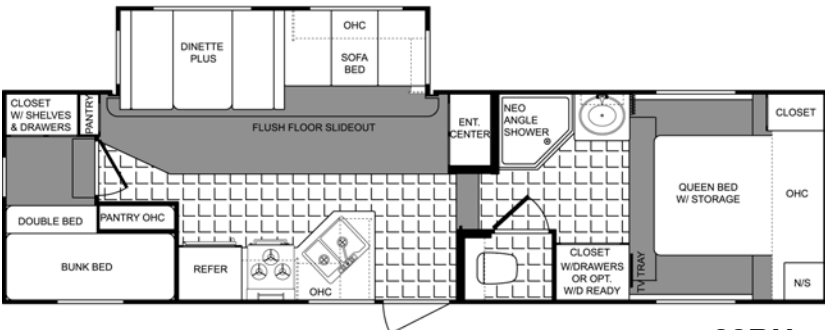


Colorado Travel Trailers and Fifth Wheels undergo a rigorous post production audit to assure the highest levels of quality and craftsmanship. Our state of the art pre-delivery inspection facility includes a rain bay that subjects each unit to a twenty minute water test. Water is sprayed on all sides of the unit at high pressure to simulate the harshest of weather conditions. Units are tested with the slide rooms in the open and closed positions and over 6,000 gallons of treated water is used during the test to make sure your next recreational vehicle is ready for any conditions mother nature can offer.

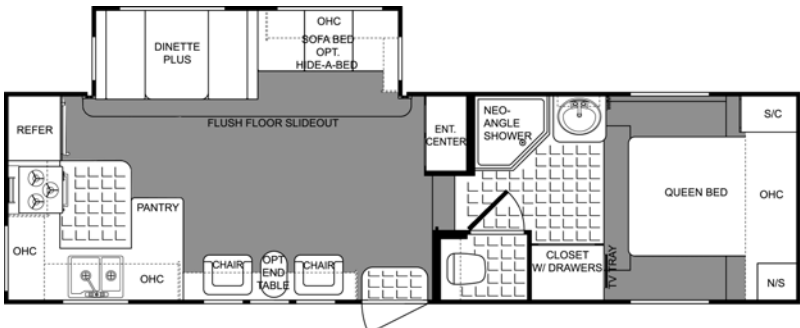
MID PROFILE FIFTH WHEELS



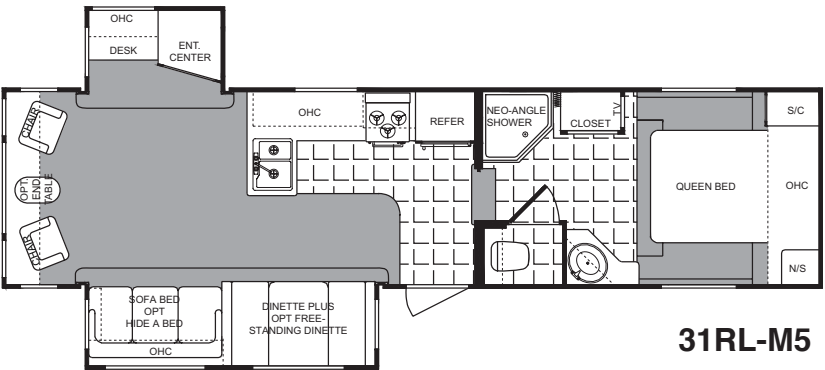
27RL



28BH



28RK



31RL-M5



BEDROOM SLIDE
(Mid-profile Fifth Wheels now available with a bedroom slide)



28BH PAC-N-PLAY
OPTION



STANDARD FEATURES

**Mid-Profile Travel
Fifth Wheels Trailer**

Attic roof vent	•	•
Water filter with spout at kitchen sink	•	•
Patio and utility light	•	•
Neo-angle shower w/ surround, opaque glass door	•	•
Rear ladder	•	•
Folding range cover	•	•
Fluorescent light in galley	•	•
Stabilizer jacks	•	•
Satellite prep for satellite hook up	•	•
Al-Ko leaf spring 5200 pound axles	•	•
Al-Ko Ultra-Lube axles	•	•
Black tank flush	•	•
15" Spare tire with carrier	•	•
Exterior hot and cold wash station		
with quick connect hose	•	•
XL folding entry assist handle	•	•
Stainless High Rise galley faucet	•	



STANDARD FEATURES

**Mid-Profile Travel
Fifth Wheels Trailer**

Solid wood cabinet frames (stiles)	•	•
36 oz. Nylon Carpet with 6 lb. 1/2" rebound pad	•	•
Armstrong vinyl flooring with Tuff Guard	•	•
Six panel residential interior passage doors	•	•
Solid wood slide fascia on living room slide	•	•
Zenith home theater system w/ DVD/CD/MP3 & sub woofer	•	•
Extra large 8 cu. ft. double door refrigerator	•	•
Day/Night Shades	•	•
10 gallon gas/electric water heater with DSI	•	•
Radius corner safety glass windows with 80% tint	•	•
35 BTU forced air, DSI furnace with wall thermostat	•	•
Solid Wood Refrigerator Inserts	•	•
8500 Series A&E awning	•	•
Large 1.3 cu. ft. residential microwave	•	•

Key Exterior Features

6-Way welded aluminum cage construction - walls roof and floor	•	•
5" tapered aluminum truss roof rafters w/ 3/8" decking	•	•
Welded aluminum framed fully laminated 2" sidewall	•	•
Block foam insulation sidewalls and floor	•	•
Laminated/welded aluminum framed floor	•	•
1 pc. seamless 5/8" Weyerhaeuser structure wood floor decking	•	•
Enclosed insulated and heated underbelly	•	•
Large pass-through storage under bath deck	•	N/A
High Gloss fiberglass sidewalls	•	•
Electric worm gear rack and pinion with flush floor slide-out system with manual override	•	•
Front gel coat fiberglass cap	•	•
One piece EPDM rubber roof	•	•
10" Triple entry step	•	•
30" radius entrance doors	•	•
Bedroom slide (most floorplans)	OPT	OPT

Key Interior Features

Solid wood raised panel Mesa Oak cabinet doors throughout	•	•
Designer valance with lambrequins	•	•
Solid wood drawer with residential style metal drawer glides	•	•
Sink covers	•	•
Cable TV hook up	•	•
Second TV outlet in bedroom	•	•
TV antenna with booster	•	•
3 burner range with oven	•	•
Double bowl acrylic kitchen sink	•	•
Porcelain toilet	•	•
Medicine cabinet w/ mirror door and make-up lights	•	•
Toothbrush holder, toilet paper holder, towel bar	•	•

Key Interior Features (continued)

13.5 BTU ducted air conditioner w/ quick cool feature and remote control	•	•
30 amp detachable power cord	•	•
Water heater bypass system with low point drain	•	•
Brushed nickel hardware	•	•
Overhead cabinets with decorative glass doors in living room slide-out	•	•
Oversized storage drawers throughout	•	•
Phone jack / computer line	•	•
Quilted bedspread w/ pillow shams and headboard	•	•

Available Options

Gel Coat Fiberglass Exterior	OPT	OPT
Molded Fiberglass Rear Cap (N/A on 28RK, 31RL)	OPT	OPT
Premium aluminum rims	OPT	OPT
MOR/ryde Suspension	OPT	OPT
MOR/ryde Shear Spring hitch	OPT	N/A
Power tongue jack	N/A	OPT
Duo pane windows	OPT	OPT
12 volt ultra heat pads	OPT	OPT
Fantastic fan w/rain sensor & thermostat	OPT	OPT
R-21 Polyair insulation in roof	OPT	OPT
25" Zenith TV	OPT	OPT
Fluorescent Lighting Package	OPT	OPT
15M BTU ducted A/C	OPT	OPT
Hide-a-bed sofa	OPT	OPT
Hide-a-bed sofa with footrests	OPT	OPT
Rocker/recliner/glider IPO swivel rocker (N/A 26FB)	OPT	OPT
Free standing dinette & 4 chairs	OPT	OPT
10 cu. ft. refrigerator	OPT	OPT

YOUR LOCAL DEALER



2164 Caragana Court • Goshen, IN 46526
Sales: 574-534-1224 • Fax: 574-975-0601
Parts, Service & Information: 574-537-0700
www.colorado-rv.com

© 2004 Thor Industries, Inc.
Printed in U.S.A.
1104-CO-B1

Product information, specifications, and photography in this brochure were as accurate as possible at time of printing. Photographs may contain some features that are optional on your vehicle. Since we continually strive to improve our products, actual products may differ. Prices and specifications are subject to change without notice. All capacities are approximate and dimensions are nominal. Some features or options may be different or unavailable in Canada. Vehicles are designed for recreational use only and not intended for use as a primary residence.