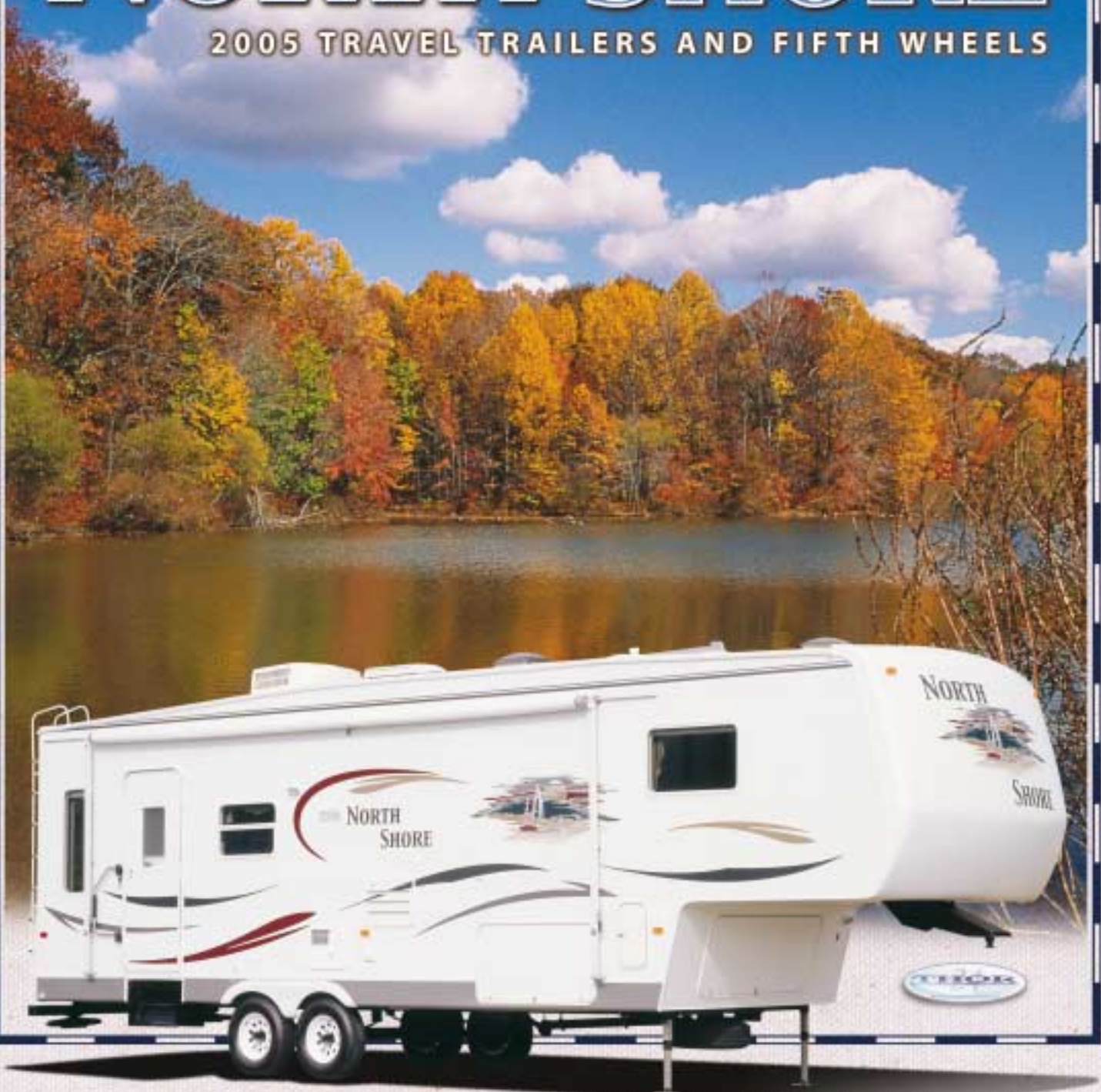




# NORTH SHORE

2005 TRAVEL TRAILERS AND FIFTH WHEELS



*Charting a new direction...*



# NORTH SHORE

## *Charting A New Direction...*

Whether you are heading out for a long-awaited weekend trip or heading south to your winter vacation spot, North Shore makes the ideal base camp for enjoying your time away from home. North Shore sets the standard for laminated recreational vehicles with a line-up of Travel Trailers, Mid-Profile and High-Profile Fifth Wheels, offering spacious floorplans loaded with features and amenities. You will love the luxurious appointments and will be amazed at the value that North Shore provides.

Take a closer look and you will see that North Shore leaves the ordinary behind.



*North Shore's kitchen is loaded with standard features that are usually found as upgrades on our competitor's products. Raised panel solid wood cabinet doors with brushed nickel hardware and over-sized drawers on residential steel roller drawer glides are standard. Large double door refrigerator, 1.2 cubic foot microwave, 22" oven with 3-burner range and stove cover, and a large double bowl sink with high-rise faucet make North Shore your best choice.*



*Upgrade to North Shore's "Executive Recliner Package". These European-style chairs swivel, recline and include ottomans.*



*North Shore's "Extend-a-Galley" countertop extension gives you more room to prepare the family meal. It stores under the bed when not in use. (optional)*



*North Shore features "RV 800" residential steel roller drawer glides. They open and close with ease and are designed for years of reliable use.*





*29RL-H5 in Hillsdale Taupe*



*North Shore's free-standing dinette is a favorite option for those who don't need the sleeping space of the standard 44" "Dinette Plus".*



*This over-sized 22" oven with 3-burner range and stove cover is a standard feature. Plus, the range hood includes a 12V exhaust fan and built-in light.*



*North Shore's double door refrigerator/freezer includes a raised panel hardwood insert.*



# NORTH SHORE TRAVEL TRAILERS AND FIFTH WHEELS



*All Fifth Wheels and most Travel Trailers feature a large "Neo-angle" corner shower with ABS surround, glass shower door and hand-held massage shower head. A large wardrobe cabinet with mirrored doors and two sweater drawers are standard on all Fifth Wheel floorplans.*



*North Shore features an AM/FM/CD player with surround sound cube speakers. An integrated DVD player is available as an upgrade.*



*North Shore Travel Trailers and high profile Fifth Wheels are available with a bedroom slide option, featuring a queen bed, large full width mirrored closet with shelf and large chest of drawers with entertainment center. North Shore is sure to give you the storage you need for those extended vacations away from home. All North Shore bedrooms include a designer master suite package with reading lights, mirror, headboard, pillows with shams, a bedspread and matching curtains. (Fifth Wheel bedroom slide shown.)*





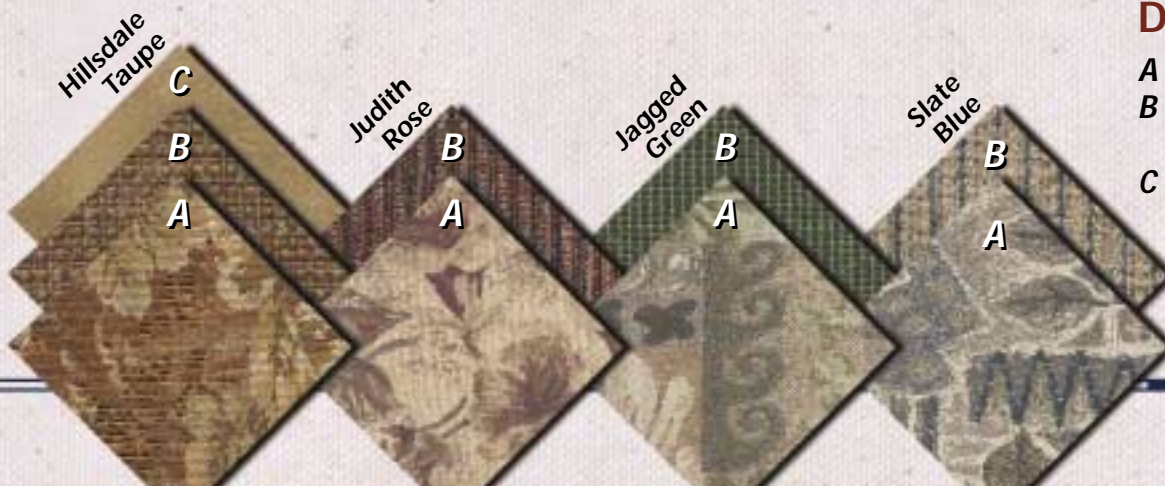
**Fold-n-Go Bunk System**  
 Here's a new feature – bunk beds that fold up against the wall to create a storage room in your 30 BH Travel Trailer. An extra 180 cubic feet of storage is created when the bunks are not in use. Add the optional Pac-n-Play door to the exterior for quick access to all of your camping equipment.



Distinctive style and premium features make North Shore stand out from the crowd. Featuring premium residential furniture, large picture windows with designer valances and fabric night shades, North Shore charts a new direction and sets the new standard in laminated Travel Trailers and Fifth Wheels. Plus, all slideout rooms feature large overhead storage cabinets, decorator lighting and an upgraded hardwood slide fascia. All windows in the slide room open for ventilation.

## Décor Options

**A = Feature Fabric**  
**B = Chairs and Dinette Seats**  
**C = Sofa and Chairs in Hillsdale Taupe**





# NORTH SHORE



**Industry Exclusive**

## **Tote-n-Tray storage – An industry first!**

Located in your travel trailer's "Storage Plus" compartment, the innovative Tote-n-Tray system maximizes storage for your family. The slide out system is mounted to the top of your compartment and includes two large storage tubs that are suspended from the slide out tray. Plus the slide out tray doubles as a counter top and food preparation area. (optional)

*North Shore – Leading the Way in Innovation.*



*Pac-n-Play storage is available on bunk house floorplans. The Pac-n-Play provides more storage for you. The bunks fold up to create a large storage area that's accessible from the exterior door. It's large enough for coolers, bikes, grills, golf clubs and more. (optional)*

*North Shore cares about the safety of your family. That's why all models come standard with a fire extinguisher, smoke, LPG and carbon monoxide detectors.*



*6-gallon gas/electric water heater with direct spark ignition (DSI) is standard.*



*Ultra-lube hubs are standard on North Shore. This feature allows for easy wheel bearing lubrication.*



*A 30 Amp marine grade detachable power cord stores in an outside compartment when not in use, saving valuable interior storage space.*



*North Shore is designed for maximum storage. The Fifth Wheel's pass through compartment is one of the largest in the industry.*



*North Shore travel trailers include a diamond plate rock guard to protect your trailer front from the hazards of the road.*



*"Spray Away" exterior wash station includes hot and cold water controls, a removable coil hose and sprayer. (optional)*



## PREMIUM CONSTRUCTION

### WALLS

1. Laminated *Filon* fiberglass bonded walls
2. 1/8" wood backer
3. Welded aluminum frame
4. Polystyrene block foam R-7 insulation
5. Second layer of 1/8" wood backer with decorative wallboard
6. A & E patio awning
7. Tinted radius clamp-ring windows
8. Radius cornered baggage doors with lock and finger pull
9. High-profile – Full fiberglass cap; Mid-profile – Full ABS cap; Travel Trailers – Fiberglass wrap with lower diamond plate

### ROOF

10. Fully decked walk-on roof with one-piece EPDM rubber roof membrane - 12 year rubber warranty
11. 3/8" *Structural Wood* decking with 25 year warranty
12. Residential fiberglass insulation
13. 5" Tapered truss roof rafters
14. Ducted roof air conditioning

15. Rain gutter molding with corner downspouts
16. 13,500 BTU ducted air conditioning

### CHASSIS

17. Steel I-beam frame with outriggers. Outriggers tie weight of sidewalls and floor into frame rails
18. Radial tires on Al-Ko leaf spring axles with Ultra-lube hubs
19. Extended pin box (most Fifth Wheel models)
20. Triple fold-away steps
21. Optional electric front jacks (M5 and H5 only)

### FLOOR

22. Polypropylene water resistant barrier attached to bottom of floor structure
23. 2" x 3" floor joists, 12" on center
24. Residential R-7 fiberglass insulation
25. One-piece 5/8" 5-ply tongue-and-groove, marine grade plywood floor
26. Residential tile-like linoleum
27. Residential carpeting
28. Optional heated and enclosed underbelly





## A white travel trailer with 'SOLAR' branding and a fish graphic. The trailer has a sleek design with a large window and a side door. The word 'SOLAR' is printed in a stylized font, and a graphic of a fish is visible on the side. The trailer is parked on a paved surface.

Floor plan of the second floor of the 1960s mobile home. The plan shows a central living area with a 'FLUSH FLOOR SLIDEOUT' and a 'TV TRAY'. To the left is a bathroom with a 'TUB' and a 'BUNK BEDS' area. To the right is a bedroom with a 'QUEEN BED' and 'STORAGE PLUS' areas. The plan also includes a 'REFER' (refrigerator), 'OHC' (overhead cabinet), 'S' (sink), and 'DINETTE PLUS' area.

The floor plan for the 1000 sq. ft. model home includes the following features:

- Living Area:** A large central area with a "FLUSH FLOOR SLIDEOUT" and a "TV TRAY".
- Bedroom:** Features a "QUEEN BED", "STORAGE PLUS", and "SC/N'S".
- Bathroom:** Includes a "TUB-ANGLE SHOWER", "CLOSET W/SHELF", and "REFER".
- Kitchen/Dining Area:** Contains a "DINETTE PLUS", "OHC", "STEREO", "OHC", and "SOFA BED".
- Other Features:** A "PENTRY", "ENT. CENTER", and "OHC" are also present.

[illegible]

**2014 Jayco Jay Flight 28BH**

The floor plan shows a front dinette with a table and chairs, a kitchen area with a refrigerator, sink, and stove, a bathroom with a toilet and shower, and a sleeping area with a queen bed. Storage compartments are located throughout the unit.

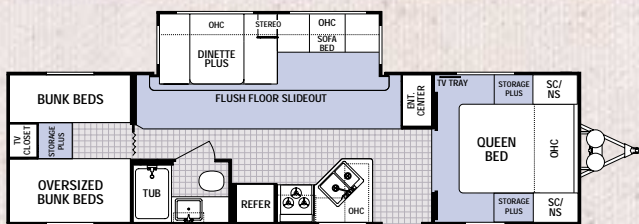
Floor plan of a mobile home unit. The layout includes a front porch with a door and a small table. The interior features a living area with a sofa bed, a dinette with a table and chairs, and a kitchen area with a stove, sink, and refrigerator. A bathroom with a tub and toilet is located near the front. A bedroom with a queen bed is at the rear. Storage areas include a closet, a linen closet, and a storage unit. The plan also shows a flush floor slide-out and a TV desk.

**2014 Forest River Freedom 2800 Floor Plan:**

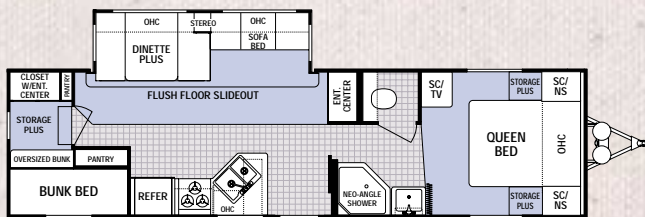
- Front Section:**
  - DINETTE PLUS:** Seating area with a table and stools.
  - KITCHEN:** Includes a sink, stove, and refrigerator.
  - BATHROOM:** Features a toilet and a shower.
- Rear Section:**
  - QUEEN BED:** Large sleeping area.
  - STORAGE PLUS:** Additional storage space.
- Other Features:**
  - FLUSH FLOOR SLIDEOUT:** Expands the living area.
  - ENT. CENTER:** Entertainment center.
  - SC/TV:** Storage compartment for TV.
  - SC/NS:** Storage compartments.
  - OH/C:** Overhead cabinet.
  - SOFA BED:** Additional sleeping space.
  - OPT. BIBLE:** Optional storage for a Bible.
  - REFR:** Refrigerator.
  - NEO-ANGLE SHOWER:** Corner shower unit.

[illegible]

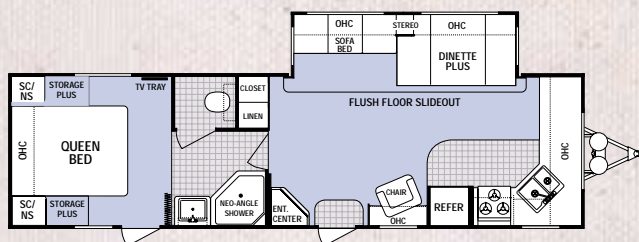




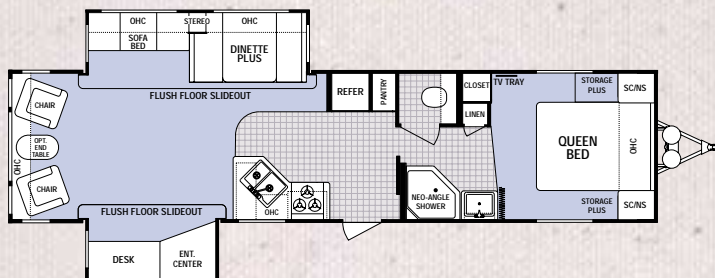
**31BH4-DSL** Available options: J, T



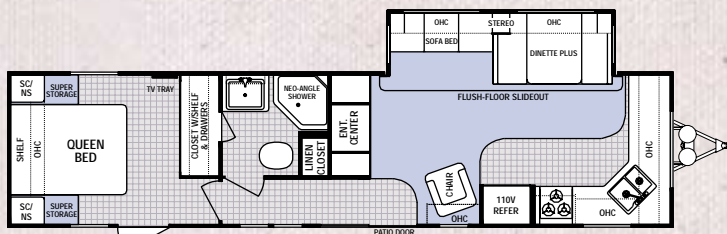
**31BK-DSL** Available options: D, M, T



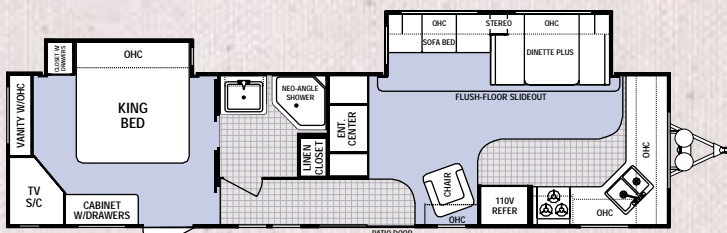
**31FK-DSL** Available option: M (Rear)



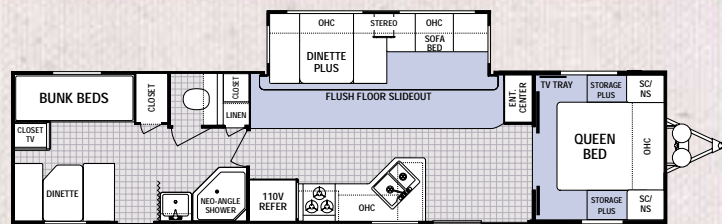
**35ES-DSL** Available option: M



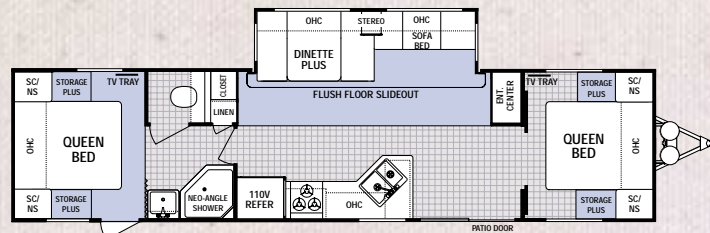
**36FK-DSL**



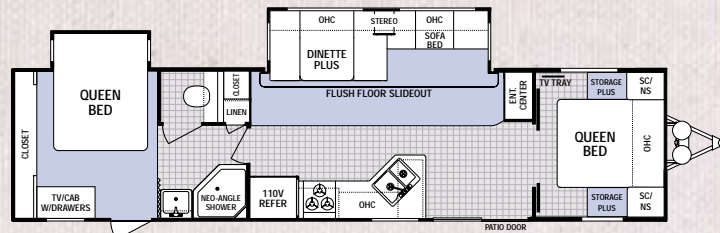
**36FK-DSL** Available with optional rear queen or king bed slide (king shown)



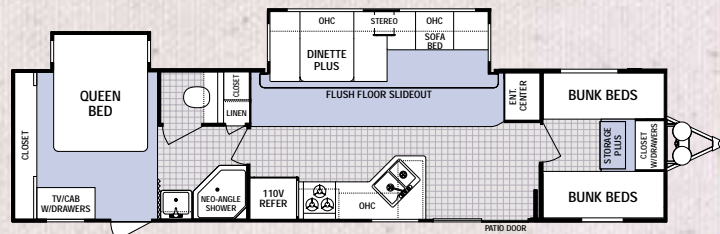
**38FB-DSL** Shown with standard front queen, rear bunks and dinette  
Available option: T



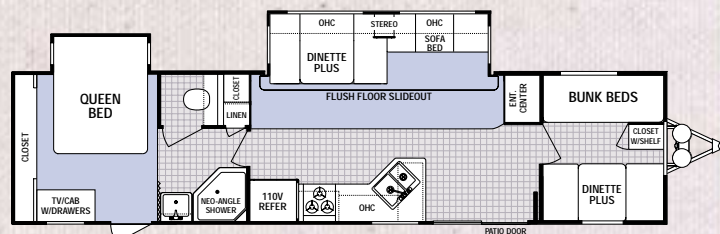
**38FB-DSL** Shown with option L (rear queen) & std. queen front bed



**38FB-DSL** Shown with option M (rear queen slide) & std. queen front bed



**38FB-DSL** Shown with option M (rear queen slide) & N (front quad bunks)  
Available option: T



**38FB-DSL** Shown with option M (rear queen slide) & J (front bunks/dinette)  
Available option: T

Vehicle Loading – Every effort has been made to provide the greatest number of options for the recreation vehicle owner. Along with these choices comes the responsibility to manage the loads that are imposed by the choices so that they remain within the manufacturer's specified chassis weight limits. Do not overload the recreation vehicle.

Net carrying capacity (NCC) determined by subtracting unloaded vehicle weight (UVW) from gross vehicle weight (GVWR) and includes fluids, options and cargo. Liquid capacities and weights are approximations only.

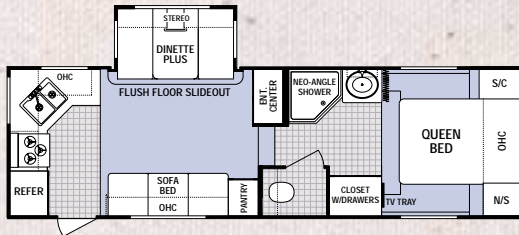
Warning: This information is intended as a guide only. Weights of individual vehicles may vary. Consult your owner's manual for complete loading, weighing and towing instructions.

Product information, specifications, and photography in this brochure were as accurate as possible at time of printing. Photographs may contain some features that are optional on your vehicle. Since we continually strive to improve our products, actual products may differ. Prices and specifications are subject to change without notice. All capacities are approximate and dimensions are nominal. Some features shown are optional and may be different or unavailable in Canada.

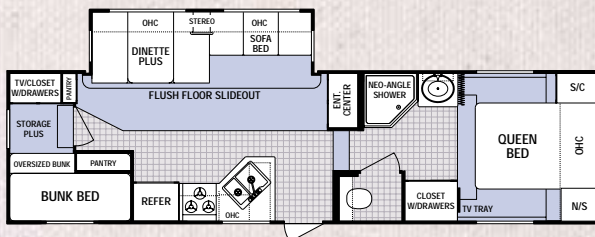
Vehicles are designed for recreational use only and not intended for use as a primary residence.



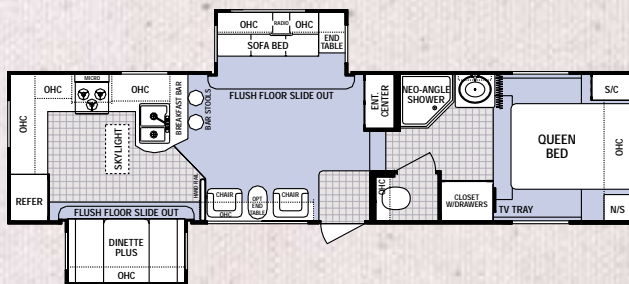
# NORTH SHORE MID PROFILE FIFTH WHEELS



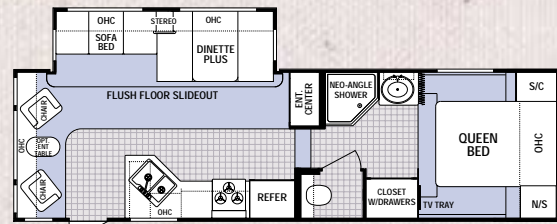
25RK-M5



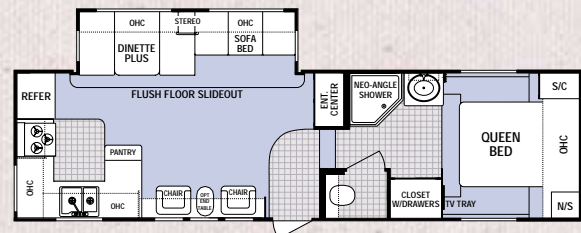
28BH-M5 Available options: D, T



31RG-M5



27RL-M5



28RK-M5



Take your cooking outside with North Shore's exterior barbecue grill. (optional)

**LEGEND**  
 Carpet  
 Vinyl

Vehicle Loading - Every effort has been made to provide the greatest number of options for the recreation vehicle owner. Along with these choices comes the responsibility to manage the loads that are imposed by the choices so that they remain within the manufacturer's specified chassis weight limits. Do not overload the recreation vehicle.

Net carrying capacity (NCC) determined by subtracting unloaded vehicle weight (UVW) from gross vehicle weight (GVWR) and includes fluids, options and cargo. Liquid capacities and weights are approximations only.

Warning: This information is intended as a guide only. Weights of individual vehicles may vary. Consult your owner's manual for complete loading, weighing and towing instructions.

Product information, specifications, and photography in this brochure were as accurate as possible at time of printing. Photographs may contain some features that are optional on your vehicle. Since we continually strive to improve our products, actual products may differ. Prices and specifications are subject to change without notice. All capacities are approximate and dimensions are nominal. Some features shown are optional and may be different or unavailable in Canada.

Vehicles are designed for recreational use only and not intended for use as a primary residence.

## MID PROFILE

## HIGH PROFILE

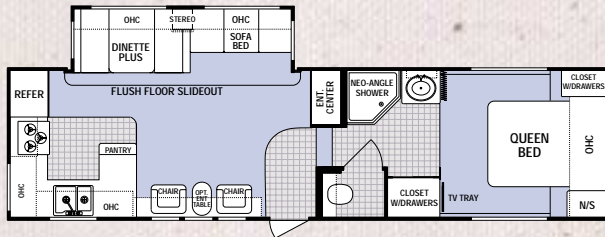
FIFTH WHEELS	25RK-M5	27RL-M5	28BH-M5	28RK-M5	31RG-M5	28RK-H5	29RL-H5	32CG-H5	33RL-H5	35BH-H5	35RL-H5	35FL-H5
Unloaded Vehicle Weight	7180	8052	8232	7822	N/A	8610	8462	8814	9392	9422	10462	9706
Hitch Dry Weight	1202	1614	1394	1372	N/A	1596	1596	1658	1770	1798	1964	2398
GVWR	10560	10560	10560	10560	N/A	10560	12192	12192	12480	12480	14400	14400
Net Cargo Capacity	2888	2016	1836	2738	N/A	3090	3730	2886	2596	3058	3446	4204
Length	28'8"	30'3"	32'6"	31'8"	N/A	33'	33'2"	33'3"	36'	37'3"	38'9"	38'9"
Exterior Width	8'	8'	8'	8'	N/A	8'	8'	8'	8'	8'	8'	8'
Exterior Height	12'2"	12'2"	12'2"	12'2"	N/A	12'2"	12'7"	12'7"	12'7"	12'7"	12'7"	12'7"
Fresh Water Capacity	46	46	46	46	N/A	46	46	46	46	46	46	46
Grey Water Capacity	37/37	37/37	37/37	37/37	N/A	37/37	37/37	37/37	37/37	37/37	37/37	37/37
Black Water Capacity	37	37	37	37	N/A	37	37	37	37	37	37	37
Tire Size	■	■	■	■	N/A	■	■	■	●	●	●	●
Furnace Size (BTUs)	30000	34000	34000	34000	N/A	34000	34000	34000	34000	34000	34000	34000

Tire Size : ■ = ST225/75R15(D) ● = ST235/80R16(E)

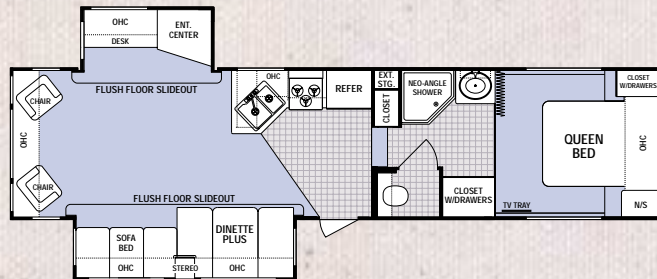


# NORTH SHORE

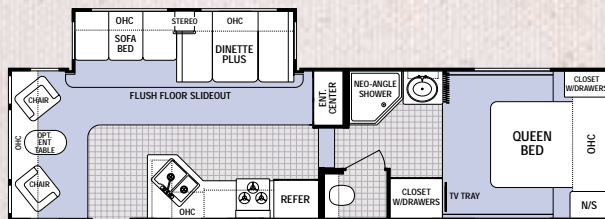
## HIGH PROFILE FIFTH WHEELS



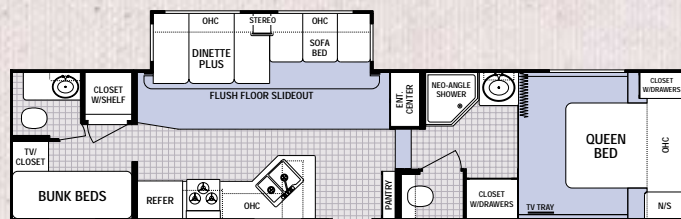
**28RK - H5** Available option: K



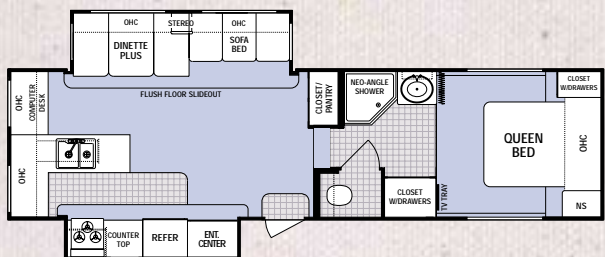
**33RL - H5** Available option: K



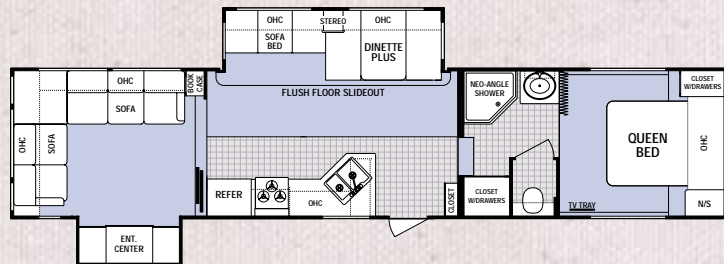
**29RL - H5** Available option: K



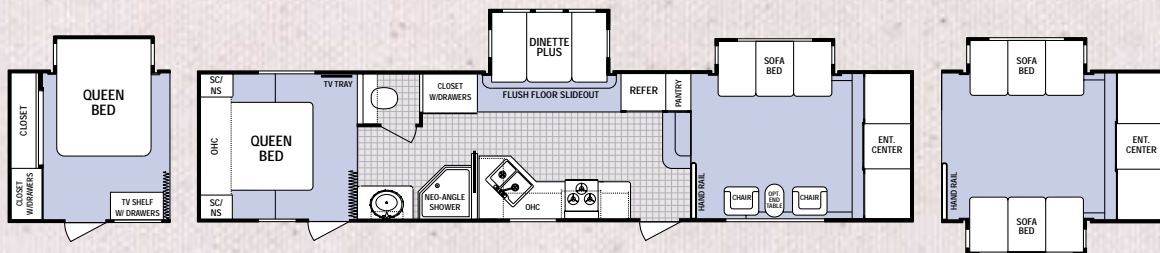
**35BH - H5** Available options: J, K, N, T, X



**32CG - H5** Available option: K



**35RL - H5** Available option: K

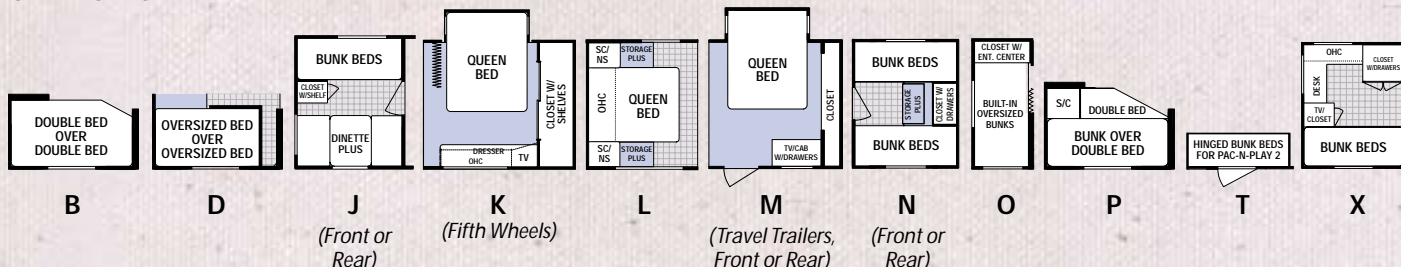


**OPTION M**  
Rear queen bed slide

**35FL-H5**

**OPTION**  
Front lounge second slide

### OPTIONS





# NORTH SHORE

## 2005 TRAVEL TRAILERS AND FIFTH WHEELS

### PREMIUM STANDARD FEATURES

*Compare these features against the competition. We are sure you will agree that North Shore is your best RV value.*

#### STANDARD NORTH SHORE PACKAGE

- Bedroom carpet with pad
  - Designer reading lights in bedroom
  - Décor coordinated bedspread
  - Décor coordinated headboard
  - 2 Pillows on queen bed
  - Upgraded living room slide fascia
  - Solid wood, raised panel cabinet doors
  - 30" Radius entry door (most floorplans)
  - Designer lighting above sofa and dinette
  - Slider windows on sides of slide
  - Solid wood, raised panel refer front
  - Upgraded high-rise galley faucet
  - Dual cabinet doors in dinette
  - Phone jack/data port
  - Upgraded graphics package
  - Hitch light
  - Exterior storage light
  - Dual sink covers and stove cover
  - Night shades
  - 6 Gallon gas/electric DSI water heater
- \*See dealer for available options*

#### EXTERIOR CONSTRUCTION

##### Chassis and Floor

- I-beam cambered chassis
- Al-Ko leaf spring axles with Ultra Lube hubs
- Tandem axles with 4 wheel electric brakes
- Large support outriggers w/solid continuous weld
- 5/8" Exterior grade tongue & groove plywood floor
- Triple entry steps - welded to frame
- Rear bumper with sewer hose storage
- Powered flush floor living room slide-out
- Rotocast holding tanks
- Twin 30# LP bottles
- LP bottle cover (TTs)

##### Walls - Laminated Aluminum Frame Construction

- Welded aluminum frame
- Polystyrene foam insulation
- Smooth Filon fiberglass

- Front wall lower diamond plate (TTs)
- Full front fiberglass cap on H5s and full front ABS cap on M5s
- Tinted radius clamp ring windows
- Rain gutter w/corner downspout
- Flush combo entry latch/dead-bolt lock
- Radius exterior "Storage Plus" compartments (where possible)
- Detachable 30 amp power cord
- Patio light

##### Roof

- 1 piece seamless EPDM rubber roof (12 year rubber warranty)
- 5" Radius truss rafters on roof
- Full walk-on roof with 3/8" decking
- In ceiling A/C ducting

#### INTERIOR FEATURES

##### Décor

- Residential tile-like linoleum
- Coat hooks (most models)
- Brushed nickel cabinet door hardware
- Living room carpet and pad (standard all DSL models)
- Oversized storage drawers with metal drawer guides in galley
- Slide-out overhead cabinets (living room slide only)

##### Electrical/Appliances

- 12V demand water pump
- Safety equipment: fire extinguisher, smoke/LP/CO detector
- Hydro flame forced air, DSI furnace with wall thermostat
- 55 Amp converter with built in battery charger
- 110V duplex receptacles interior and exterior

##### Kitchen

- Norcold double door gas/electric refrigerator
- Range hood with 12V light and exhaust fan

- 44" Oversized booth dinette plus
- Double bowl white acrylic sink
- Spice rack below sink

##### Bath

- ABS tub surround
- Medicine cabinet with mirror
- Shower curtain
- Glass shower door (neo-angle showers)
- Towel bar with coat hooks
- 12V power exhaust roof vent in bath
- GFI protected 110V duplex receptacle
- Thetford toilet

##### Bedroom

- Innerspring mattress
- TV tray/cable TV hook-up
- Overhead cabinets with shelf
- Lift-up bed with storage below

#### STANDARD COMFORT PACKAGE

- 13.5 BTU roof air conditioning
- Microwave oven
- A&E patio awning
- Skylight over tub
- AM/FM stereo with CD player
- Three burner range with oven
- TV antenna with satellite prep

#### Why A Thor Product Is Your Best RV Value:



Thor Industries, Inc., listed on the New York Stock Exchange, proudly traces its history back over seventy years to the pioneering days of the RV industry with the founding of Airstream, the industry's oldest and most renowned brand. Our total commitment to quality and our philosophy of putting our customers first has led to our continuous growth. Today, Thor is the largest builder of RVs. Thor's strong financial condition and years of solid growth are your assurance that we will be here to serve you for years to come. We think this extra peace of mind is important when you are making a significant investment. Because our customers are always #1 with us, we work harder than other manufacturers to satisfy you.

©2004 Thor Industries, Inc. NSR1.11/04

## NORTH SHORE

A division of Dutchmen Manufacturing  
2164 Caragana Court ■ Goshen, IN 46526  
Sales: 574.534.1224 ■ Fax: 574.975.0592

[www.northshore-rv.com](http://www.northshore-rv.com)

Your North Shore Dealer:

