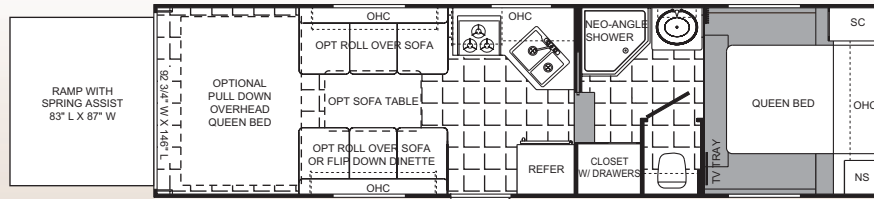


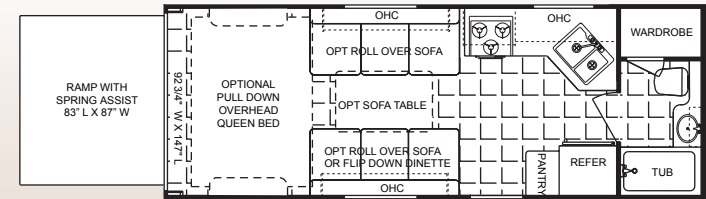
# 2005 Victory Lane SRV's

## Fifth Wheels

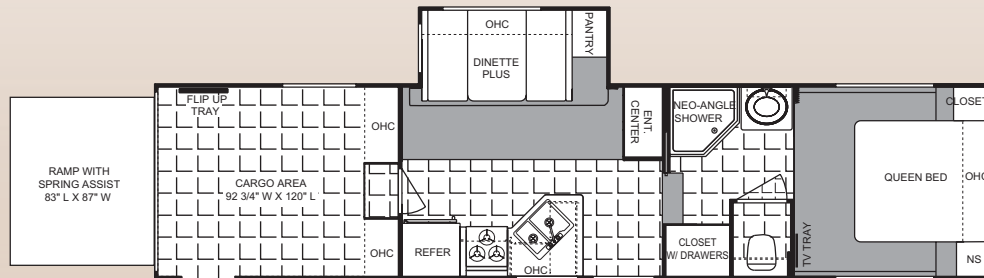
## Travel Trailers



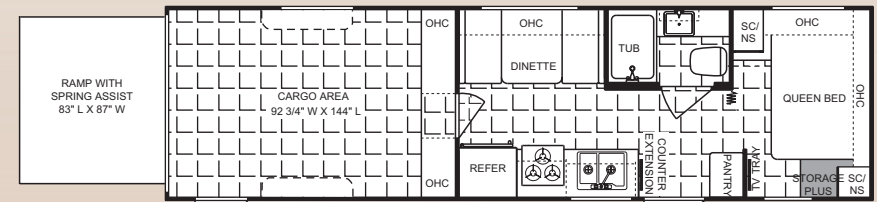
26SRV-M5



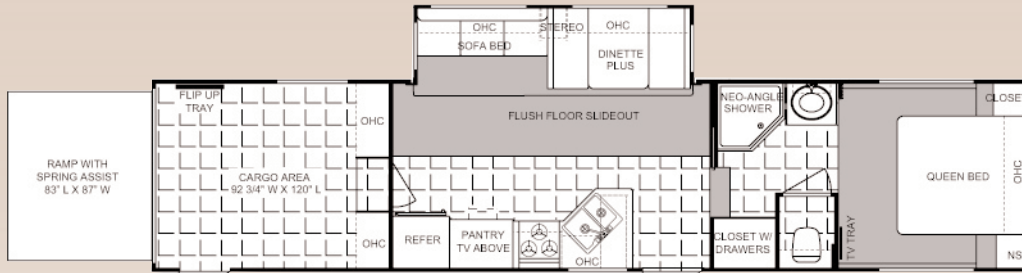
24SRV



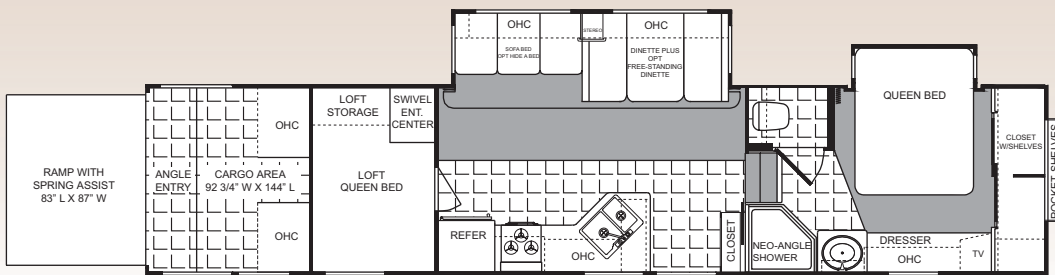
32SRV-H5



28SRV



35SRV-H5



36SRV-H5

## Weights & Measurements

Model	24SRV	28SRV	26SRV-M5	32SRV-H5	35SRV-H5	36SRV
Cargo Area Length	12'3" plus	12'	12'2" plus	10'	10'	12'
Exterior Width	8ft.	8ft.	8ft.	8ft.	8ft.	8ft.
Exterior Height	11'6"	11'4"	12'3"	12'9"	12'9"	12'10"
Exterior Length	26'10"	33'7"	31'10"	36'	39'5"	37'7"
Hitch Dry Weight	1058	1204	1898	1716	2112	2655
GVWR	11176	11176	12192	14400	15500	15500
Unloaded Vehicle Weight	6450	7244	7760	9750	10858	11808
Net Cargo Capacity	4726	3932	4432	4650	4642	4492
Fresh Water Capacity	98	98	98	98	84	98
Grey Water Capacity	37	37	37	37/37	37/37	37/37
Black Water Capacity	37	37	37	37	37	37
Tire Size	ST225/75R15(D)	ST225/75R15(D)	ST225/75R15(D)	LT235/85R16(E)	ST235/80R16(E)	ST225/75R15(D)
Furnace Size (BTU's)	30000	30000	30000	34000	34000	34000

[www.victorylane-rv.com](http://www.victorylane-rv.com)

A Division of Dutchmen Manufacturing, Inc.

2164 Caragana Court · Goshen, IN 46526

574-534-1224 · Fax 574-533-3807

©2004 Thor Industries, Inc.

Your Local Dealer

Product information and specifications in this brochure were as accurate as possible at time of printing. Since we continually strive to improve our products, actual products may differ. Prices and specifications are subject to change without notice. All capacities are approximate and dimensions are nominal. Some features shown are optional and may be different or unavailable in Canada. Vehicles are designed for recreational use only and not intended for use as a primary residence.

**Vehicle loading** - Every effort has been made to provide the greatest number of options for the recreational vehicle owner. Along with these choices comes the responsibility to manage the loads that are imposed by the choices that they remain within the manufacturer's specified chassis weight limits. Do not overload the recreational vehicle. Dry weights based on standard features - Some optional equipment not included. Net carrying capacity (NCC) is determined by subtracting unloaded vehicle weight (UVW) from gross vehicle weight (GVWR) and includes fluids, options and cargo. Liquid capacities and weights are approximations only. **Warning** - This information is intended as a guide only. Weights of individual vehicles may vary. Consult your owner's manual for complete loading, weighing and towing instructions.