



**Victory  
Lane**

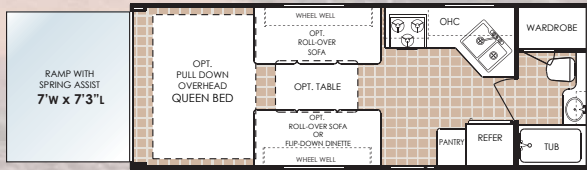
**Sport Recreational Vehicles**



# Premium Floorplans

## Travel Trailers

**24SRV**

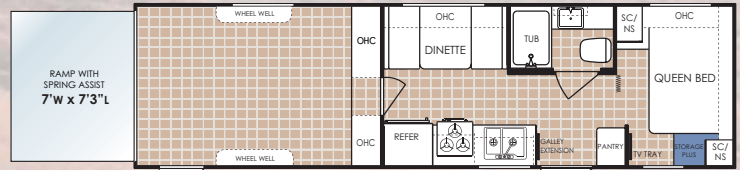


14' 7" to Pantry

12' 3" to Galley

- Open Cargo Area Floorplan
- Payload Capacity 4726 lbs.

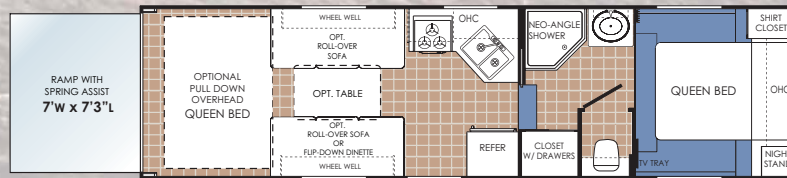
**28SRV**



12' 3" to Wall

- Enclosed Garage with Sealed Door and Insulated Wall to Cargo Area
- Payload Capacity 3936 lbs.

## Fifth Wheels



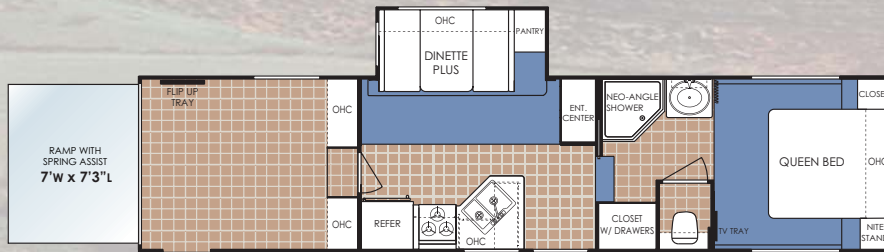
14' 7" to Refer

12' 5" to Galley

**26SRV-M5**

- Open Cargo Area Floorplan
- Cargo Area Swing-Down Bed Optional
- Fold-a-Dinette/Sofas Optional

- Payload Capacity 4432 lbs.

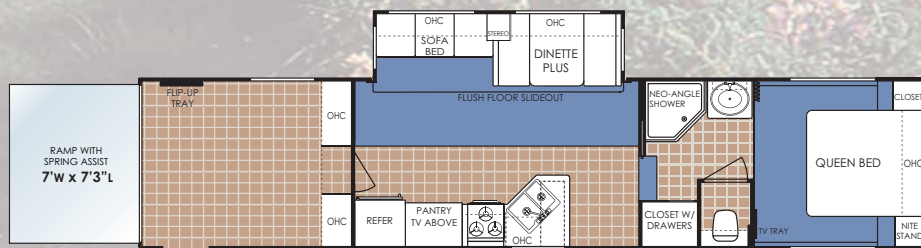


10' to Wall

**32SRV-H5**

- Enclosed Garage with Sealed Door and Insulated Wall to Cargo Area
- Bed Slide Available

- Payload Capacity 4650 lbs.

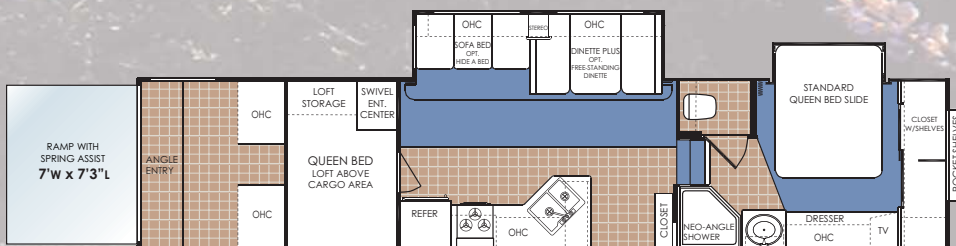


10' to Wall

**35SRV-H5**

- Enclosed Garage with Sealed Door and Insulated Wall to Cargo Area
- Bed Slide Available

- Payload Capacity 4642 lbs.



12' to Wall

**36SRV-H5**

- Triple Axle Design
- Enclosed Garage with Sealed Door and Insulated Wall to Cargo Area
- Bed Slide Standard
- Lowered Rear Door with Angled Entry
- Standard Queen Loft

- Payload Capacity 4492 lbs.



# Standard & Optional Features

## Performance Plus Package - Standard

13.5 BTU Ducted roof air conditioning  
TV antenna with satellite prep  
Victory Lane A&E patio awning  
Cargo area tie downs  
Full walk on roof  
Exterior storage lights  
Hitch light  
Solid wood cabinet doors  
6 Gallon gas/electric DSI water heater  
Phone jack  
AM/FM stereo with CD player  
Three burner range with oven  
Norcold double door gas/electric refrigerator  
Solid wood, raised panel refrigerator front  
Microwave oven  
Premium high-rise galley faucet  
Skylight over tub  
Power roof vent in bath  
104 gallon fresh water system (most models)

## Exterior Construction

### Chassis and Floor

I-beam cambered chassis  
Al-Ko leaf spring axles with Ultra Lube hubs  
Tandem axles with 4 wheel electric brakes  
Large support outriggers w/solid continuous weld  
5/8" Exterior grade tongue & groove plywood floor  
Triple entry steps - welded to frame  
Rear bumper with sewer hose storage  
Powered flush floor living room slide-out  
Rotocast holding tanks  
Twin 30# LP bottles  
LP bottle cover (TTs)

### Walls - Laminated, Aluminum Frame Construction

Smooth *Filon* fiberglass  
Polystyrene foam insulation  
Full front fiberglass cap on H5's and full front ABS cap on M5's  
Front wall lower diamond plate (TTs)  
Tinted radius clamp ring windows  
Slider windows on sides of slide  
30" Radius entry door  
Flush combo entry latch/dead-bolt lock  
Rain gutter w/corner downspout  
Radius corner exterior compartments  
Patio light  
Premium graphics package  
Detachable 30 amp power cord

### Roof

1 piece seamless EPDM rubber roof  
5" Radius truss rafters on roof  
Full walk-on roof with 3/8" decking  
In ceiling A/C ducting

### Cargo Area

"Grip Star" - cargo door flooring  
Black and white checkered linoleum in cargo area  
Cargo area tie down  
Mini-blinds over windows

## Interior Features

### Décor

Premium living room slide fascia  
Designer lighting above sofa and dinette  
Dual cabinet doors in dinette  
Night shades  
Residential tile-like linoleum  
Coat hooks (most models)  
Brushed nickel cabinet door hardware  
Living room carpet and pad (standard all models with slide rooms)  
Oversized storage drawers with metal drawer guides in galley  
Slide-out overhead cabinets (living room slide only)

### Electrical/Appliances

12V demand water pump  
Safety equipment: fire extinguisher, smoke/LP/CO detector  
Hydro flame forced air, DSI furnace with wall thermostat  
55 Amp converter with built in battery charger  
110V duplex receptacles interior and exterior

### Kitchen

Dual sink covers and stove cover  
Range hood with 12V light and exhaust fan  
44" Oversized booth "Dinette Plus" (Where possible)  
Double bowl white acrylic sink  
Spice rack below sink

### Bath

ABS tub surround  
Medicine cabinet with mirror  
Shower curtain (TT's)  
Glass shower door (neo-angle shower models)  
Towel bar with coat hooks  
12V power exhaust roof vent in bath  
GFI protected 110V duplex receptacle  
Thetford toilet

### Bedroom

Innerspring mattress  
TV tray/cable TV hook-up  
Lift-up bed with storage below  
Bedroom carpet with pad (fifth wheels)  
Designer reading lights in bedroom  
Décor coordinated bedspread  
Décor coordinated headboard  
2 Pillows on queen bed

## SRV - Options

Generator Prep  
Onan Generator installed  
Fuel pump station with 30 gallon fuel tank and 6' fuel hose and nozzle  
Bedroom slide (32SRV, 35SRV) Std - 36SRV  
Pull-down queen bed in cargo area (travel trailers)  
Folding roll-over sofa with table in cargo area (travel trailers)  
Diamond plate or rubber diamond plate flooring in cargo area  
Recessed side floor lights (Door side only)  
Exterior security lights  
Screen door in cargo area  
Enclosed & insulated underbelly  
Additional R7 Poly-Air roof insulation package  
15,000 BTU AC in place of 13.5 BTU A/C  
Fantastic vent fan in cargo area  
12v heat pad on holding tanks (N/A Canada)  
Aluminum rims  
Detachable roof access ladder  
Shock absorbers (H5 fifth wheels)  
Electric front jacks (fifth wheels)  
Exterior Spray-Away wash station  
Exterior barbecue grill  
10 gallon gas/electric water heater with DSI  
\*See dealer for all available options



**THE INDUSTRY'S  
Best Warranty  
By Far!**

We're so confident in the design and construction of our products that they are covered by Thor's Limited Warranty program.\*

Your warranty includes:

- \* One Year Bumper to Hitch Limited Warranty
- \* Two Year Structural and Appliance Limited Warranty

\*See owner's manual for complete warranty details.



**Why A Thor  
Product Is Your  
Best RV Value:**

Thor Industries, Inc., listed on the New York Stock Exchange, proudly traces its history back over seventy years to the pioneering days of the RV industry with the founding of Airstream, the industry's oldest and most renowned brand.

Our total commitment to quality and our philosophy of putting our customers first has led to our continuous growth. Today, Thor is the largest builder of RVs. Thor's strong financial condition and years of solid growth are your assurance that we will be here to serve you for years to come. We think this extra peace of mind is important when you are making a significant investment. Because our customers are always #1 with us, we work harder than other manufacturers to satisfy you.



## Weights & Measurements

Model	24SRV	26SRV	26SRV-M5	32SRV-H5	35SRV-H5	36SRV
Cargo Area Length	12'3" plus	12'	12'2" plus	10'	10'	12'
Exterior Width	8ft.	8ft.	8ft.	8ft.	8ft.	8ft.
Exterior Height	11'6"	11'4"	12'3"	12'9"	12'9"	12'10"
Exterior Length	26'10"	33'7"	31'10"	36'	39'5"	39'5"
Hitch Dry Weight	1058	1204	1898	1716	2112	2655
GVWR	11176	11176	12192	14400	15500	15500
Unloaded Vehicle Weight	6450	7244	7760	9750	10858	11808
Net Cargo Capacity	4726	3932	4432	4650	4642	4492
*Fresh Water Capacity	104	104	104	104	90	104
Grey Water Capacity	37	37	37	37/37	37/37	37/37
Black Water Capacity	37	37	37	37	37	37
Tire Size	ST225/75R15(D)	ST225/75R15(D)	ST225/75R15(D)	LT235/85R16(E)	ST235/80R16(E)	ST225/75R15(D)
Furnace Size (BTU's)	30000	30000	30000	34000	34000	34000

Product information and specifications in this brochure were as accurate as possible at time of printing. Since we continually strive to improve our products, actual products may differ. Prices and specifications are subject to change without notice. All capacities are approximate and dimensions are nominal. Some features shown are optional and may be different or unavailable in Canada.

Vehicles are designed for recreational use only and not intended for use as a primary residence.

**Vehicle loading** - Every effort has been made to provide the greatest number of options for the recreational vehicle owner. Along with these choices comes the responsibility to manage the loads that are imposed by the choices that they remain within the manufacturer's specified chassis weight limits. Do not overload the recreational vehicle. **Dry weights** based on standard features - Some optional equipment not included. **Net carrying capacity (NCC)** is determined by subtracting unloaded vehicle weight (UVW) from gross vehicle weight (GVWR) and includes fluids, options and cargo. Liquid capacities and weights are approximations only. **Warning** - This information is intended as a guide only. Weights of individual vehicles may vary. Consult your owner's manual for complete loading, weighing and towing instructions. \*Fresh water capacities include capacity of water heater.

VL1rev2-05

©2005 Thor Industries, Inc.

**www.victorylane-rv.com**

A Division of Dutchmen Manufacturing, Inc.  
2164 Caragana Court • Goshen, IN 46526  
574-534-1224 • Fax 574-533-3807

**Your Local Dealer**



# Well-Equipped Cargo Areas



**Screen Door:** Victory Lane's roll-away screen door is available as an option. The full width screen door mounts above the cargo door to let fresh air in and keep insects out.

**Sealed Cargo:** Many models feature a sealed rear cargo area. The key-locking security door and wall are insulated to protect the living area of your SRV.



**Cargo Floor:** Victory Lane features three rows of reinforced tie down rings rated at 5,000 lbs. each. The standard vinyl flooring can be replaced with optional aluminum diamond-plate or durable anti-slip rubber diamond-plate flooring (shown).



**Ladder:** Victory Lane features a fully decked walk-on roof. The removable aluminum ladder can be used with the cargo door open or closed.

**V**ictory Lane's cargo area is designed with the features and equipment you want in your next SRV. Victory Lane is available in open or enclosed cargo areas. Enclosed cargo areas feature white laminated storage cabinets and durable, easy to clean vinyl wallboard with kick plate. Open cargo floorplans feature oak finish cabinets. Both styles include reinforced tie down rings, easy-clean stain resistant vinyl flooring, cargo lights and power outlets.

Victory Lane features a premium bottom hinged, spring-lift assisted cargo door. This creates one of the largest door openings in the industry - 7' wide by 7' 3" tall! The door has a 2500 lb. capacity and includes dual exterior cam locks and an anti-slip "Grip-Star" finish. Most models include a diamond-plate entry ramp extension (NA 36SRV).

*Victory Lane - The most functional cargo space in the industry.*



**Open Concept Floor Plans:** The pull down overhead rear queen bed, and the convertible roll-over sofa and dinette turn your cargo area into extra living and sleeping space. The bed swings up the ceiling and the sofa and dinette fold against the wall when not in use giving you the storage space you need for your toys.





# Victory Lane



**Generator:** No hooks-ups at your favorite recreation area? It's not a problem with Victory Lane's optional Onan Micro-quiet™ generator (available in gas or lp.) The vented compartment is insulated to reduce interior sound. Generator prep is also available as an option.



**Fantastic Fan:** A Fantastic Fan is available as an option for the cargo or living area of your SRV. The Fantastic Fan includes a thermostat and rain sensor.



**10 Gallon Water Heater:** The optional 10 gallon gas/electric water heater option allows for longer showers after a long day of play. The quick recovery water heater features Direct Spark Ignition. Just flip the switch to light the pilot.



**104 Gallon Fresh Water Tank:** Victory Lane features one of the largest fresh water tanks in the industry. Our 104 gallon tank is the perfect size for a weekend of off road adventures (most models). Plus, 32' and above fifth wheels feature dual gray water tanks with a total capacity of 74 gallons.



**Fuel System:** Victory Lane's optional 30 gallon fuel station is a must have for off-road enthusiasts. It features a 12 volt fuel pump and a 6 foot hose with nozzle.



*Victory Lane is more than an RV with a garage. It is a dual purpose trailer that incorporates the best features available from RV's and Cargo trailers to create the ultimate Sport Recreational Vehicle - SRV.*

*Premium amenities, large living areas, properly equipped cargo areas and optional dry camping accessories make Victory Lane SRV's your best choice when it comes to your next SRV.*

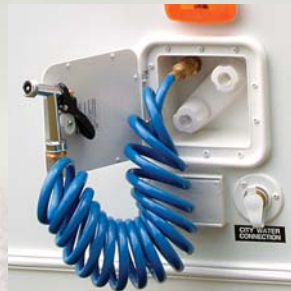
*So, enjoy traveling in a Victory Lane SRV, and remember, you can take it with you!*



**Premium Wheels & Hubs:** Victory Lane features Ultra-Lube hubs and radial tires. Ultra-lube hubs allow for easy wheel bearing lubrication. Plus, you can customize your Victory Lane with the optional aluminum rim package.



**Exterior Wash Station:** Cleaning up after a long day of fun is easy with the optional "Spray-away" wash station. It includes hot and cold water and a 6 ft. quick-connect coil hose with sprayer.



**Exterior Lighting:** Victory Lane features a standard patio light, hitch light and rear overhead lights. Optional recessed side flood lights as well as round security lights allow your day of fun to extend into night.





## Luxurious Living Areas

*There is more to a SRV than the cargo area. Victory Lane's interiors are designed for comfort and value. Victory Lane is loaded with features that are usually found as upgrades on the competitor's products. Hardwood cabinet doors, residential furnishings, full size slide rooms and designer decors are just a few of the standard features that make Victory Lane is your best SRV value.*



**Spacious Kitchen:** Large kitchens with an abundance of countertop and storage space are found on all Victory Lane floorplans. A double door refrigerator, large microwave and large double bowl sink are just some of the standard features you get with Victory Lane.



**Residential Cabinetry:** Victory Lane features "RV 800" residential steel roller drawer glides. They open and close with ease and are designed for years of reliable use.



**Oversized Oven:** This over-sized 22" oven with 3-burner range and stove cover is a standard feature. Plus, the range hood includes a 12V exhaust fan and built-in light.



**Bedroom:** Most Victory Lane fifth wheels are available with a bedroom slide option, featuring a queen bed, large full width mirrored closet with shelf and a large chest of drawers with entertainment center.