

2006 Denali Travel Trailers & Fifth Wheels

DENALI

Let Your Journey Begin



The native people of the great Alaskan wilderness call the massive peak of Mount McKinley "Denali". Translated, Denali means "Great One."



28RL-M5 in Ville Deste Green

DENALI

Let Your Journey Begin.

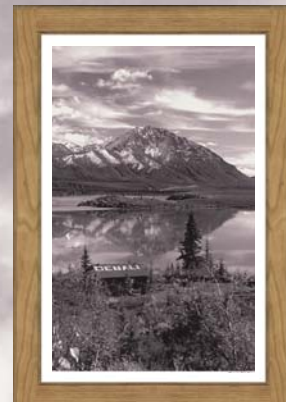
The native people of the great Alaskan wilderness call the massive peak of Mount McKinley "Denali".

Translated, Denali means "Great One".

Denali is also the name of the immense national park and nature preserve containing Mt. McKinley. At 6,000,000 acres, Denali National Park exemplifies Alaska's character as one of the world's last great frontiers for wilderness and adventure. It remains an untouched terrain of wildlife and glaciated mountains.

The grandeur and beauty of Denali National Park has inspired Denali laminated travel trailers and fifth wheels. Denali will captivate your senses and deliver first-class features and comfort with unprecedented value.

Distinctive style and premium features make Denali stand out from the crowd. Featuring premium residential furniture, large picture windows with designer valances and fabric night shades, Denali sets the new standard in laminated Travel Trailers and Fifth Wheels. Plus, all slideout rooms feature designer lighting, a slide fascia and large overhead storage cabinets over the sofa.



Designer touches like a Howard Miller clock and framed art-work add to Denali's sophisticated decor (most models).



Pictured are the 31RGS-M5 bed slide and bath.



Denali's bedroom slide features a queen bed, large front closet with mirrored doors, angled sink and mirrored cabinets, a free-standing chest of drawers and a pull-out TV shelf. Denali gives you the storage you need for those extended vacations away from home. Bedroom slides are standard on high profile fifth wheels and optional on travel trailers and mid-profile fifth wheels.

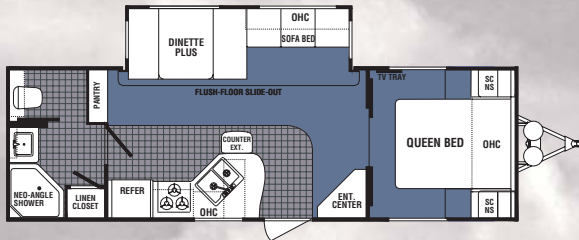
All Denali bedrooms include a designer master suite package with headboard, pillows with shams, a bedspread and matching valances.

Denali's kitchen is loaded with standard features that are usually found as upgrades on our competitors' products. A large double door refrigerator, large microwave, a double bowl sink with high-rise faucet, raised panel solid wood cabinet doors with brushed nickel hardware and over-sized drawers on residential steel roller drawer glides make Denali your best choice for premium features and unprecedented value.

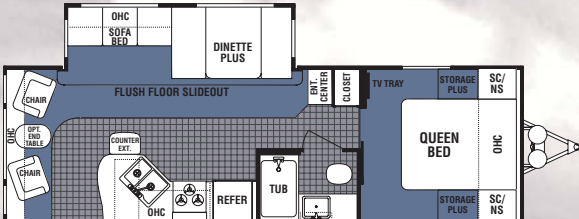
31RG-M5



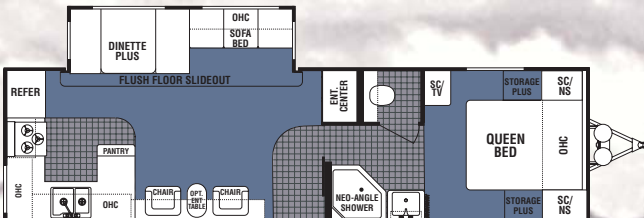
TRAVEL TRAILER FLOORPLANS



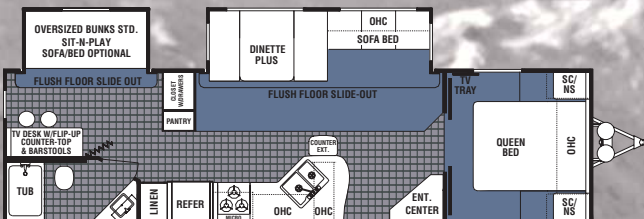
26FB-DSL



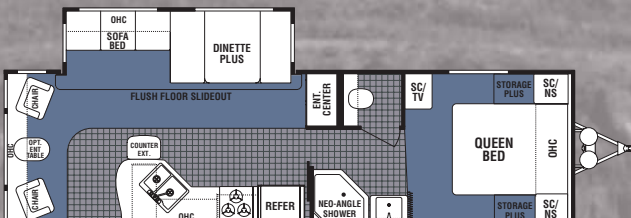
26RL-DSL



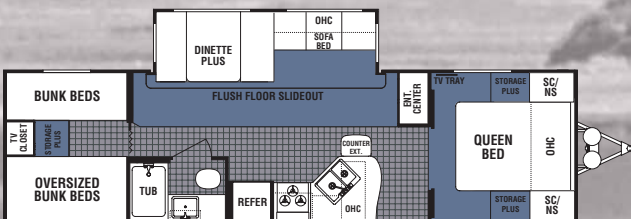
29RK-DSL Available options: M



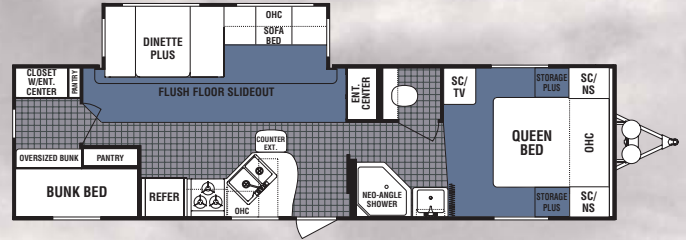
30BS-DSL Available second entry door in bath option



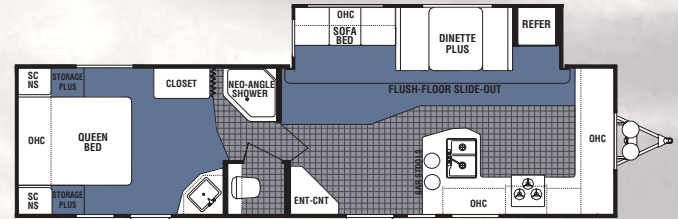
30RL-DSL Available option: M



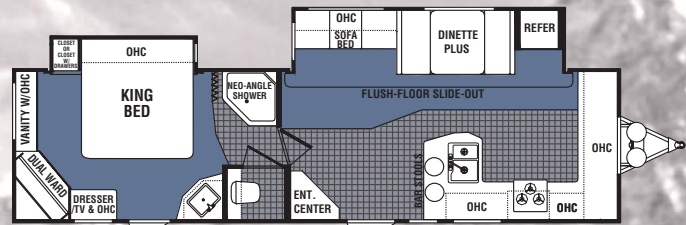
31BH4-DSL Available options: J, T



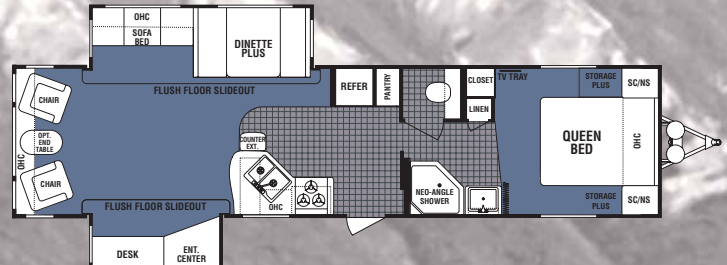
31BK-DSL Available option: D, M, T



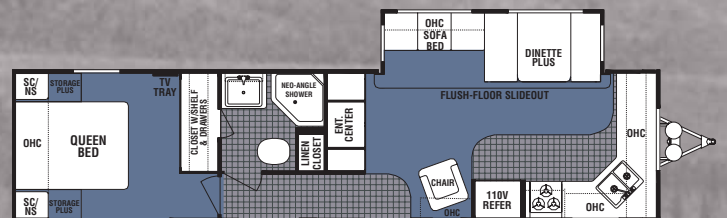
31FG-DSL Available with king bed slide suite option



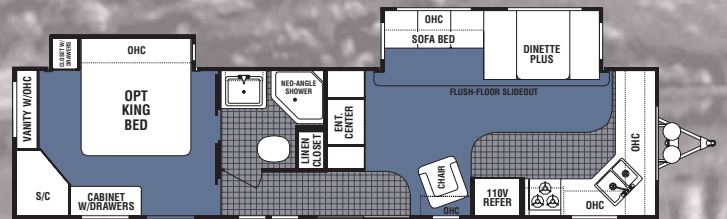
31FG-DSL-BS Shown with king bed slide suite option



35ES-DSL Available option: M

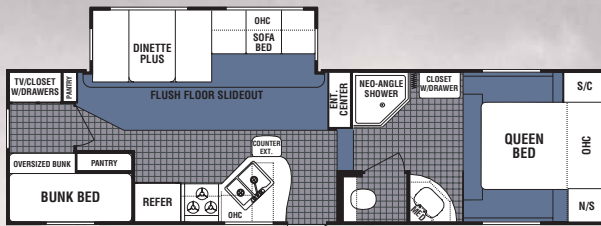


36FK-DSL Available with king bed slide suite option

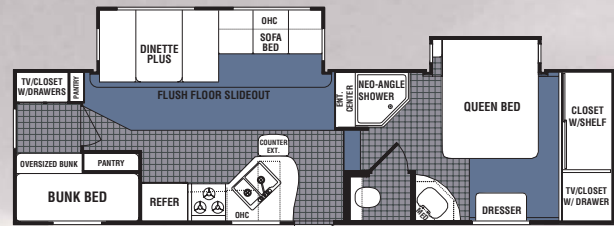


36FK-DSL-BS Shown with king bed slide suite option

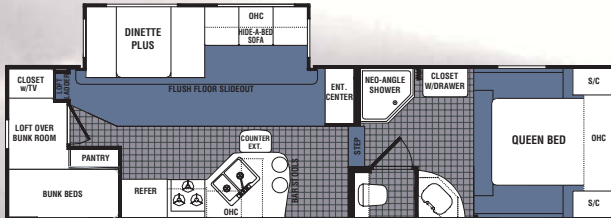
MID PROFILE FIFTH WHEEL FLOORPLANS



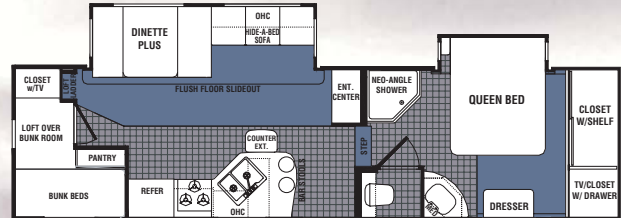
28BH-M5 Available option: D, T



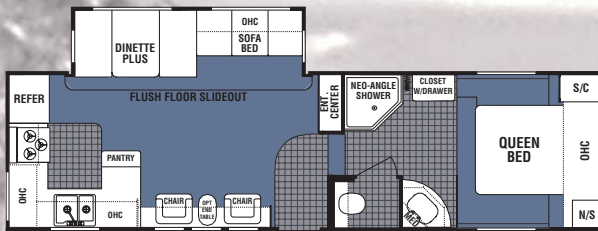
28BHBS-M5 Available option: D, T



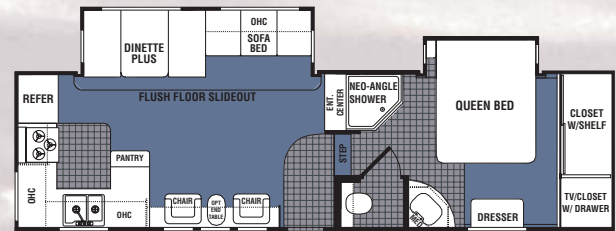
28LB-M5 Available option: T



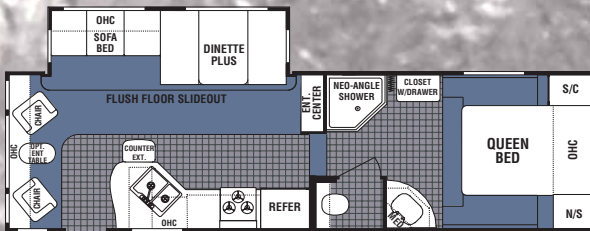
28LBBS-M5 Available option: T



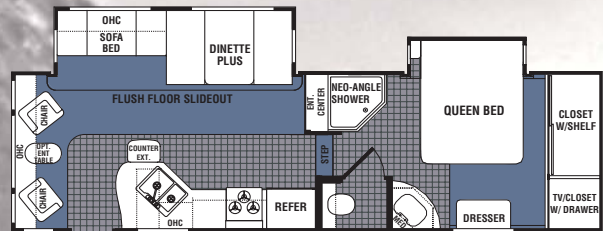
28RK-M5



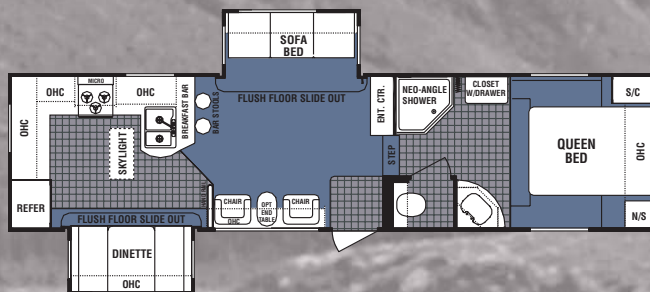
28RKBS-M5



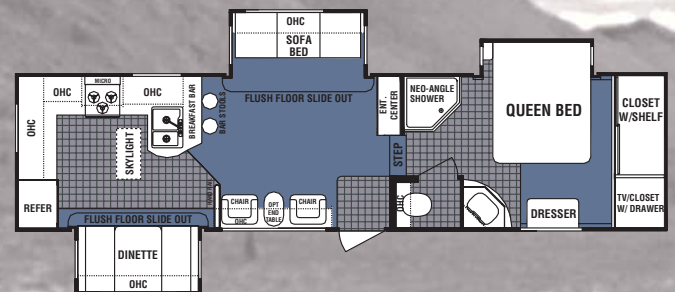
28RL-M5



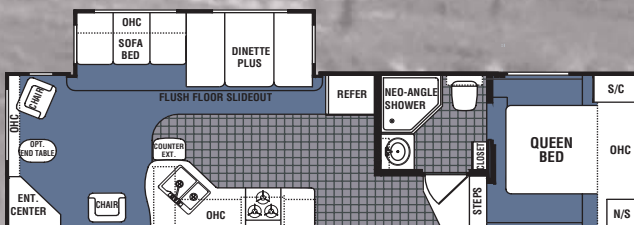
28RLBS-M5



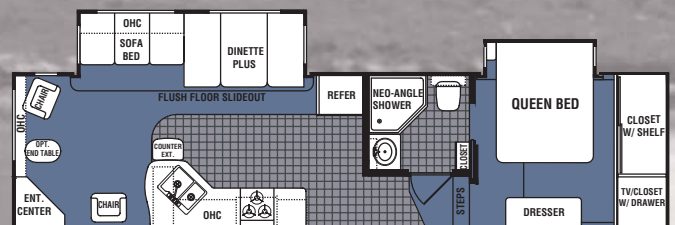
31RG-M5



31RGBS-M5

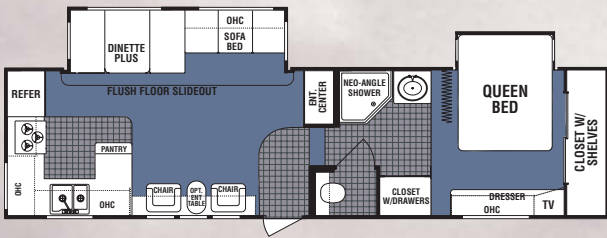


31SB-M5

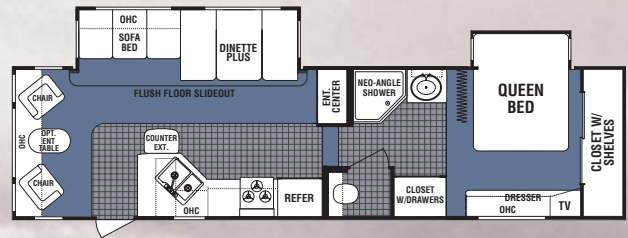


31SBBS-M5

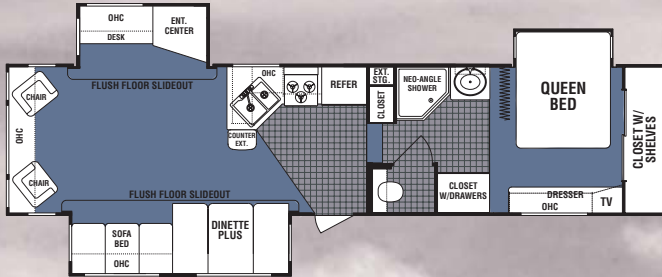
HIGH PROFILE FIFTH WHEEL FLOORPLANS



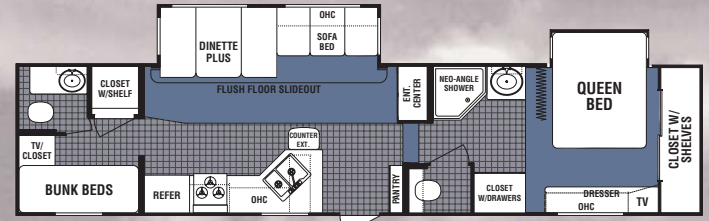
28RKBS-H5



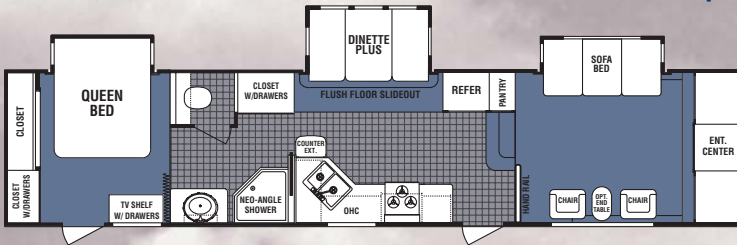
29RLBS-H5



33RLBS-H5



35BHBS-H5 Available options: J, N, T



35FLBS-H5



OPTION

Front lounge second slide

LEGEND

VINYL
 CARPET

WEIGHTS & SPECIFICATIONS

TRAVEL TRAILERS	26FB-DSL	26RL-DSL	29RK-DSL	30BS-DSL	30RL-DSL	31BH4-DSL	31BK-DSL	31FG-DSL	31FG-DSL-BS	35ES-DSL	36FK-DSL	36FK-DSL-BS
Unloaded Vehicle Weight	6546	6786	7390	8058	7368	7244	7564	7608	7918	8394	8016	8608
Hitch Dry Weight	866	778	884	984	1022	1104	1066	1283	1216	1178	1394	976
GVWR	9680	9680	9680	9680	9680	9680	9680	9680	9680	11176	11176	11176
Net Cargo Capacity	2642	2402	1798	1622	1820	1944	1624	2073	1762	2290	2668	2568
Length	29'9"	29'9"	33'6"	33'11"	32'3"	33'3"	34'8"	34'11"	34'11"	37'4"	37'7"	37'7"
Exterior Width	8'	8'	8'	8'	8'	8'	8'	8'	8'	8'	8'	8'
Exterior Height	11'0"	11'0"	11'0"	11'0"	11'0"	11'0"	11'0"	11'0"	11'0"	11'0"	11'0"	11'0"
Fresh Water Capacity	46	46	46	46	46	46	46	46	46	46	46	46
Grey Water Capacity	37	37	37/37	37/37	37	37	37/37	37/37	37/37	37/37	37/37	37/37
Black Water Capacity	37	37	37	37	37	37	37	37	37	37	37	37
Tire Size	■	■	■	■	■	■	■	■	■	■	■	■
Furnace Size (BTUs)	30000	30000	34000	34000	34000	34000	34000	34000	34000	34000	34000	34000

Tire Size : ■ = ST225/75R15(D)

MID PROFILE

FIFTH WHEELS	28BH-M5	28BHBS-M5	28LB-M5	28LBBS-M5	28RK-M5	28RKBS-M5	28RL-M5	28RLBS-M5	31SB-M5	31SBBS-M5	31RG-M5	31RGS-M5	28RKBS-H5	29RLBS-H5	33RLBS-H5
Unloaded Vehicle Weight	8232	8604	8570	8714	7822	8530	7920	8348	8439	9086	9136	9478	9088	8994	10034
Hitch Dry Weight	1394	1544	1330	1520	1372	1084	1494	1758	1780	2144	1428	1850	1982	1952	2088
GVWR	10560	10560	10560	10560	10560	10560	10560	10560	12192	12192	12192	12192	12192	12192	12480
Net Cargo Capacity	1836	1956	1990	1847	2738	2030	2632	2212	3753	3106	3056	2714	3104	3198	2446
Length	33'6"	34'5"	33'6"	34'5"	31'8"	32'7"	30'3"	31'2"	34'1"	35'	34'6"	35'5"	33'10"	33'2"	36'2"
Exterior Width	8'	8'	8'	8'	8'	8'	8'	8'	8'	8'	8'	8'	8'	8'	8'
Exterior Height	12'2"	12'2"	12'2"	12'2"	12'2"	12'2"	12'2"	12'2"	12'2"	12'2"	12'2"	12'2"	12'7"	12'7"	12'7"
Fresh Water Capacity	46	46	46	46	46	46	46	46	46	46	46	46	46	46	46
Grey Water Capacity	37/37	37/37	37/37	37/37	37/37	37/37	37/37	37/37	37/37	37/37	37/37	37/37	37/37	37	37/37
Black Water Capacity	37	37	37	37	37	37	37	37	37	37	37	37	37	37	37
Tire Size	■	■	■	■	■	■	■	■	■	■	■	■	●	●	●
Furnace Size (BTUs)	30000	30000	30000	30000	34000	34000	34000	34000	34000	34000	34000	34000	34000	34000	34000

Tire Size: ■ = ST225/75R15(D) ● = ST235/80R16(E)

Vehicle Loading - Every effort has been made to provide the greatest number of options for the recreation vehicle owner. Along with these choices comes the responsibility to manage the loads that are imposed by the choices so that they remain within the manufacturer's specified chassis weight limits. Do not overload the recreation vehicle. Net carrying capacity (NCC) determined by subtracting unloaded vehicle weight (UVW) from gross vehicle weight (GVWR) and includes fluids, options and cargo. Liquid capacities and weights are approximations only.

Warning: This information is intended as a guide only. Weights of individual vehicles may vary. Consult your owner's manual for complete loading, weighing and towing instructions. Product information, specifications, and photography in this brochure were as accurate as possible at time of printing. Photographs may contain some features that are optional on your vehicle. Since we continually strive to improve our products, actual products may differ. Prices and specifications are subject to change without notice. All capacities are approximate and dimensions are nominal. Some features shown are optional and may be different or unavailable in Canada. Vehicles are designed for recreational use only and not intended for use as a primary residence.

DENALI PREMIUM CONSTRUCTION

Walls

1. Laminated, high-gloss *Lamilux* fiberglass bonded walls
2. 1/8" wood backer
3. Welded aluminum frame
4. Polystyrene block foam R-7 insulation
5. Second layer of 1/8" wood backer with decorative wallboard
6. A & E patio awning
7. Tinted radius clamp-ring windows
8. Radius cornered baggage doors with lock and finger pull
9. Fifth Wheels - Full fiberglass cap
Travel Trailers - Fiberglass wrap with lower diamond plate

Roof

10. Fully decked walk-on roof with one-piece EPDM rubber roof membrane - 12 year rubber warranty
11. 3/8" *Structural Wood* decking with 25 year materials warranty
12. Residential fiberglass insulation
13. 5" Tapered truss roof rafters
14. Ducted roof air conditioning
15. Rain gutter molding with corner downspouts
16. 13,500 BTU ducted air conditioning

Chassis

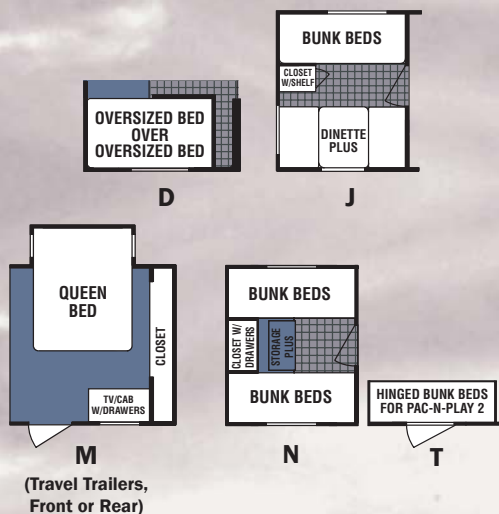
17. Steel I-beam frame with outriggers
18. Radial tires on *Al-Ko* leaf spring axles with Ultra-lube hubs
19. Extended pin box (most Fifth Wheel models)
20. Triple fold-away steps
21. Standard electric front jacks (M5 and H5 only)



Floor

22. Polypropylene water resistant barrier attached to bottom of floor structure
23. 2" x 3" floor joists, 12" on center
24. Residential R-7 fiberglass insulation
25. 5/8" 5-ply tongue-and-groove, marine grade plywood floor
26. Residential tile-like linoleum
27. Residential carpeting
28. Optional insulated and enclosed underbelly

FLOORPLAN OPTIONS



MORE STANDARD FEATURES FOR YOUR DOLLAR!

*See page 8 for more great features



Denali features "RV 800" residential steel roller drawer glides. They open and close with ease and are designed for years of reliable use.



An Aqua Magic porcelain toilet with foot flush is standard in all Denali bath's.



A 30 Amp marine grade detachable power cord stores in an outside compartment when not in use, saving valuable interior storage space.



Denali features a standard 5-in-1 home entertainment center with remote control, a DVD/CD/MP3 player, AM/FM tuner, surround sound speakers and sub-woofer.



6-gallon gas/electric water heater with direct spark ignition (DSI) is standard.



Ultra-lube hubs are standard on Denali. This feature allows for easy wheel bearing lubrication.

35BHBS-H5	35FLBS-H5
10252	9860
2188	2206
12480	14400
2228	4560
37'6"	39'8"
8'	8'
12'7"	12'7"
46	46
37	37/37
37	37
●	●
34000	34000

DENALI

2006 TRAVEL TRAILERS AND FIFTH WHEELS

PREMIUM STANDARD FEATURES

Compare these features against the competition. We are sure you will agree that Denali is your best RV value.

DENALI VALUE PACKAGE - STANDARD

- Detachable 30 amp power cord
- Range hood with 12V light and exhaust fan
- Silverware drawer
- Al-Ko leaf spring axles with Ultra Lube hubs
- Countertop extension
- Carbon monoxide, smoke/LP detectors
- Front fiberglass cap with area lights (M5's)
- Front fiberglass cap (H5's)
- Front radius profile with lower diamond plate (TT)
- Laminated fiberglass aluminum frame
- Radial tires
- Twin 30# LP bottles
- Premium high-rise galley faucet
- Systems monitor panel
- Rear ladder (FW)
- Bedroom/living area carpet and pad
- Residential steel roller drawer guides
- Flush floor slide outs
- Pass-through exterior storage
- 12V power exhaust roof vent in bath
- Double bowl, brushed nickel color sink
- Bar stools (see floorplan)

RELAX IN LUXURY PACKAGE**

- Sink and stove cover
- Skylight in bath
- Decor-coordinated throw pillows
- Hide-a-bed sofa
- Executive chairs (see floorplan)

- Neo-angle shower with glass door (all FW's, most TT's)
- Bifold shower/tub door
- Interior storage below dinette
- Wall border
- Solid wood, arched cabinet doors
- Phone jack/data port
- Bedspread with pillow shams and headboard
- The "Great One" framed artwork (most models)
- Solid wood refer fronts
- Slider windows on sides of slides
- Designer *Howard Miller* clock

THE GREAT ONE PACKAGE**

- Electric front jacks (FW)
- Rear stabilizer jacks (FW)
- Front/rear stabilizer jacks (TT)
- 13.5 BTU ducted A/C
- A&E awning
- Double door refrigerator
- Home theater system with DVD/CD player, AM/FM tuner surround sound speakers and sub-woofer
- Hitch light
- Porcelain toilet with foot flush
- TV antenna
- 6 Gallon gas/electric DSI water heater
- Exterior storage light
- *Magic Chef* oven with peizo ignition
- Entry assist handle
- Cable and satellite hook-up

OTHER STANDARD FEATURES

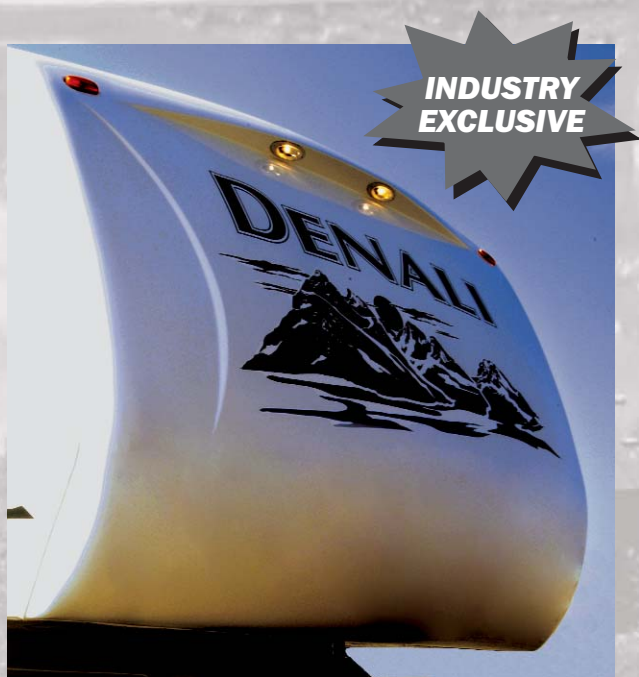
- Residential tile-like linoleum
- Coat hooks (most models)
- 12V demand water pump
- Hydro flame forced air, DSI furnace with wall thermostat
- 110V duplex receptacles interior and exterior
- ABS tub surround
- Medicine cabinet with mirror in bath
- Towel bar with coat hooks
- Innerspring mattress
- TV tray/cable TV hook-up in bedroom
- Lift-up bed with storage below

POPULAR OPTIONAL FEATURES*

- *Arctic Package* adds *Poly Air* roof insulation and enclosed, insulated and heated underbelly
- 15 BTU A/C
- Washer /dryer prep (high profile fifth wheels only)
- Shock absorbers
- Exterior shower
- Aluminum rims
- Dark tint safety glass windows
- *Fantastic* power roof fan
- Ceiling fan with light (FW)
- 10 Gallon water heater
- Rocker recliners & ottomans
- Pac-n-Play storage

*See dealer for available options

**Required packages



New Mid-Profile Fifth Wheel Front Cap with Area Lights

The standard, aerodynamic front cap is designed to increase headroom in the bedroom without increasing the overall height of the mid-profile fifth wheel. In addition, the new cap features integrated "area lights." The area lights are on a dimmer switch that allows you to illuminate your campsite at night for added security.

DECOR CHOICES



VILLE DESTÉ GREEN



HOWLAND TAUPE



CHARTWELL ROSE



MARCUS BLUE

DENALI

Your Local Dealer:

www.denali-rv.com

A division of Dutchmen Manufacturing
2164 Caragana Court
Goshen, IN 46526
Sales: 574.534.1224
Fax: 574.975.0626