

2006 GRAND JUNCTION



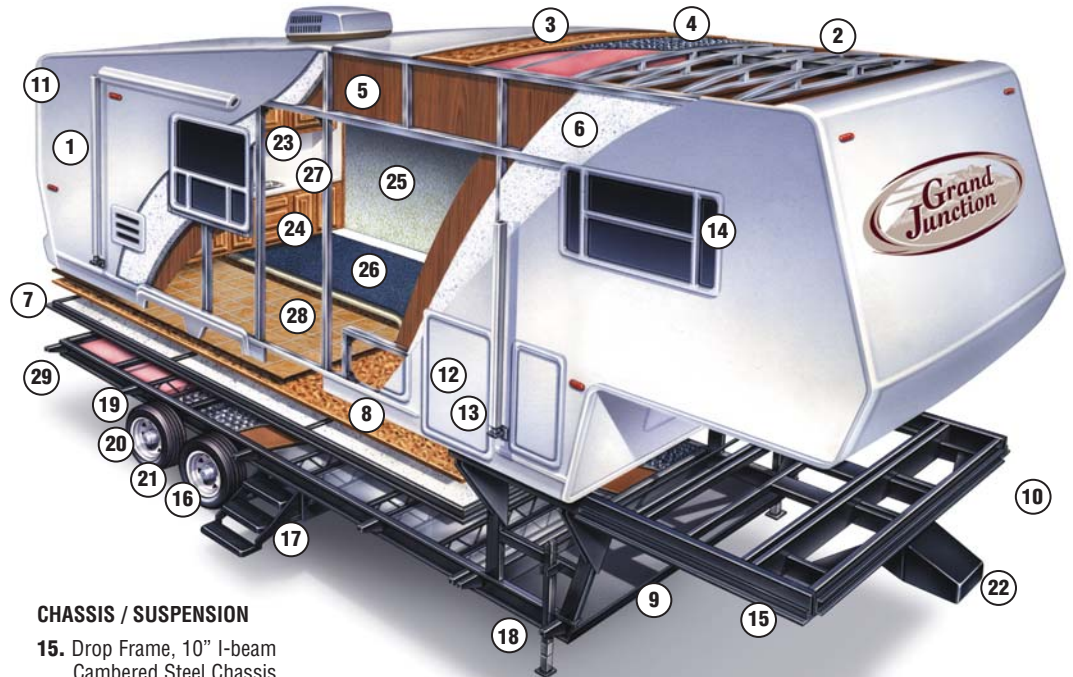
Distinctive Style. First Class Elegance. Unsurpassed Value.

HIGH PROFILE FIFTH WHEELS

GRAND JUNCTION PREMIUM CONSTRUCTION

Grand Junction - Distinctive Style, First Class Elegance, Unsurpassed Value.

6-Way Welded "Aluminum Cage" including Walls, Roof & Floor!



PREMIUM CONSTRUCTION

1. Gel-Coat Hi-Gloss Laminated Sidewalls**
2. 5" Welded Aluminum Truss Roof Rafter with 3/8" Decking
3. *Weyerhaeuser* Structure Wood Decking. One-Piece EPDM Rubber Roof Membrane
4. R14 Roof Insulation with Aluminum Wrapped AC Ducting
5. Welded Aluminum Framed, Fully Laminated 2" Sidewall
6. Block Foam Insulation Sidewalls and Floor
7. Laminated/Welded Aluminum Framed Floor
8. 1pc. Seamless 5/8" *Weyerhaeuser* Structure Wood Floor Decking
9. Protected, Insulated/Heated Enclosed Underbelly
10. Front Gel-Coat Molded Fiberglass Cap
11. Rear Gel-Coat Molded Fiberglass Cap
12. Extra Large Pass-Through Outside Storage Compartments
13. Locking, Insulated, Hi-Gloss Fiberglass Baggage Doors
14. Safety Glass Windows with 80% Tint

CHASSIS / SUSPENSION

15. Drop Frame, 10" I-beam Cambered Steel Chassis
16. Dual 7000 lb. Leaf Spring Axles*
17. Extra Deep, Folding Triple Entry Steps
18. 6000 lb. Electric Front Jacks
19. 16" E-Rated Heavy Duty RV Radial Tires*
20. 8 Lug Hubs*
21. *Mor/ryde* Suspension System*
22. *Mor/ryde* Hitch System*

INTERIOR FEATURES

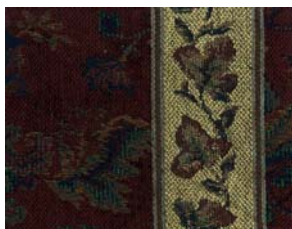
23. "KCMA Certified and Approved" Cabinet Faces, Drawer Fronts (Kitchen Cabinet Manufacturers of America)
24. Designer Raised Panel Cabinet Doors Throughout
25. Designer Sierra Beige Wallboard

26. 30 Ounce Sculpted Nylon Carpet with 1/2", 6 lb. Rebound Carpet Pad
27. Solid Surface Countertops
28. *Armstrong* "Tuff Guard" linoleum
29. Rear Electric Stabilizing Jacks **

*Included in Touring Performance Package
**Included in Easy Living Package

2006 Decor Choices

**All decors are available with Mesa Oak or Canyon Cherry wood colors.*



Barcelona Rust



Fresco Chocolate



Raine Blue



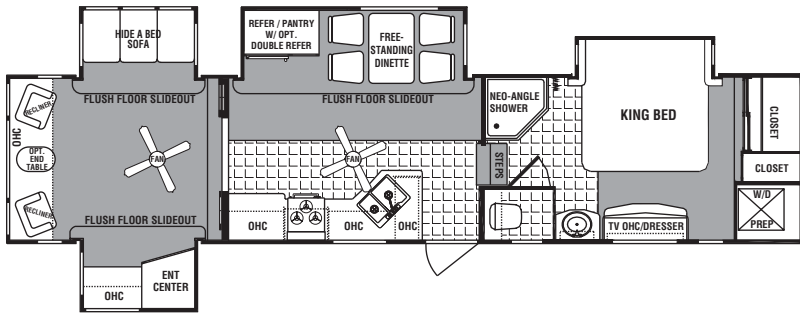
Sanibel Sage

Weights and Specifications

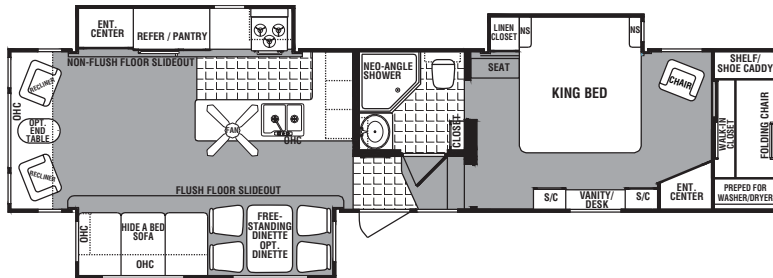
Model	Unloaded Vehicle Weight	Hitch Dry Weight	Gross Vehicle Weight	Net Cargo Capacity	Length	Exterior Width	Exterior Height	*Fresh Water Capacity	Grey Water Capacity	Black Water Capacity	Tire Size	Furnace Size (BTU's)
37QSL*	11825	2138	15500	3675	39' 11"	8 ft.	12' 11.5"	58	40/40	40	ST235/80R16 (E)	40,000
35TMS	12840	2273	15500	2660	39' 8"	8 ft.	12' 11.5"	98	48/48/66	48	ST235/80R16 (E)	40,000
34TRG	12621	2861	15500	2879	38' 4"	8 ft.	12' 11.5"	98	48/48/48	48	ST235/80R16 (E)	40,000
34QRL	12857	2497	15500	2643	38' 3"	8 ft.	12' 11.5"	98	48/48	37	ST235/80R16 (E)	40,000
335TRL	NA	NA	NA	NA	NA	NA	NA	NA	NA	NA	NA	NA
32TCG*	10612	2254	15500	4888	35' 3"	8 ft.	12' 11.5"	58	40/40	40	ST235/80R16 (E)	40,000
31TKS	NA	NA	NA	NA	NA	NA	NA	NA	NA	NA	NA	NA
29DRL	10607	2269	15500	4893	33' 11"	8 ft.	12' 11.5"	98	48/40	48	ST235/80R16 (E)	40,000
29DRK	NA	NA	NA	NA	NA	NA	NA	NA	NA	NA	NA	NA

Dry weights based on standard features – Some optional equipment included in base weights. *Pre-January 2006 Production

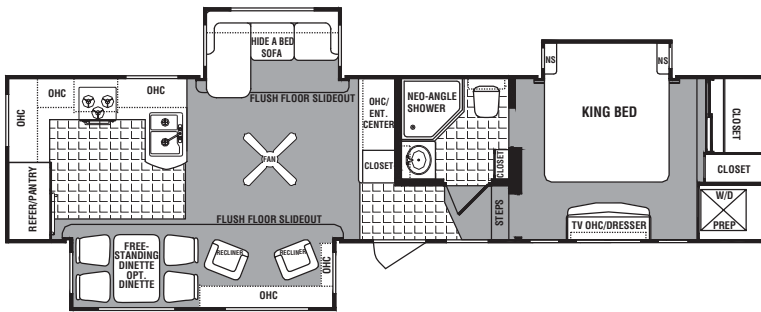
2006 GRAND JUNCTION FLOORPLANS



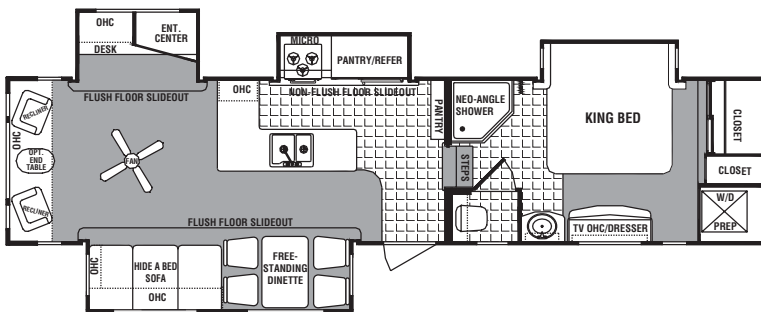
3
7
Q
S
L



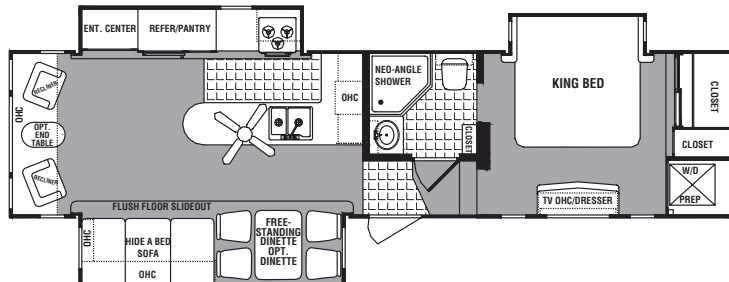
3
5
T
M
S



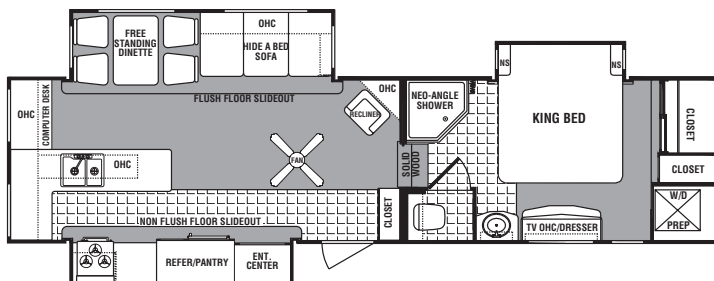
3
4
T
R
G



3
4
Q
R
L



3
3
5
T
R
L



3
2
T
C
G

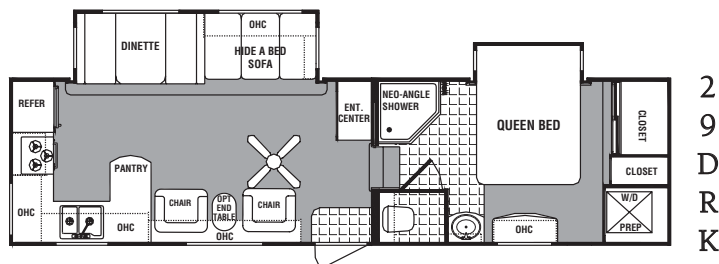
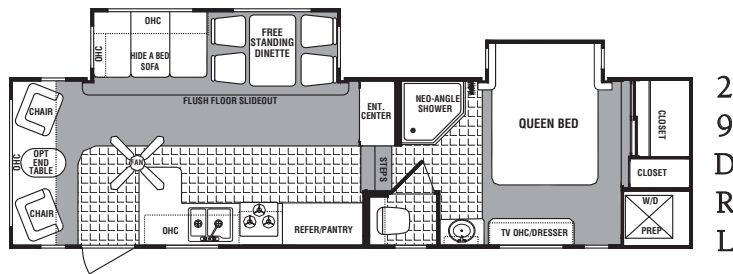
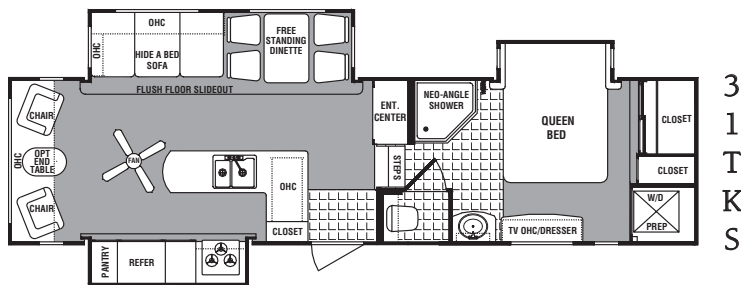
Grand Junction - Premium Features, Incredible Value

- 6-Way Aluminum Superstructure
- 5-Way Vacuum Bonded (Laminated) Construction
- Drop Frame Chassis Design
- 78" of Headroom Throughout Bedroom!
- MOR/ryde "RE" Suspension
- MOR/ryde Rubber Pin Box
- Dual 7000 lb. Axles
- 8 Lug Aluminum Alloy Rims
- Gel-Coat Fiberglass Exterior
- "Quick Draw" Electric Rear Stabilizer Jacks
- Heated Insulated & Enclosed Underbelly
- R14 Roof Insulation
- Water Closet Window
- Transom Window Above Slide
- 100% Vented with 80% Tint Safety Glass
- 10" XL Folding Entry Step
- Solid Surface Countertops with Backsplash
- Premium "Soft Touch" Vinyl Ceiling
- Solid Ash Cabinet Stiles
- Solid Ash Cabinet Doors & Drawers
- Stainless Steel Ball Bearing Drawer Glides
- Solid Ash Slideout Fascia & Crown Molding
- 6 Panel Residential Door
- Recessed Solid Wood Steps
- Armstrong Linoleum with Tough Guard
- Premium Appliance Package
 - Convection Microwave Oven with Turntable
 - Sealed Burner Range with Large Oven
 - Water Filtration System
 - 40K btu Furnace
 - 15K btu AC with Remote
 - 12 Gallon Water Heater
 - Halogen Lighting Package
 - Washer/Dryer Prep - Full Size Stackable Unit
- Decorative, Residential Light Fixtures
- Premium Furniture Package
 - Free-Standing Table & Chairs
 - Hide-a-Bed Sofa Standard
 - End Table with Lamp Standard (NA TCG)
 - Dual Rocker Recliner Standard (1-TCG)
 - New Ultra Leather Option for 2006
 - Premium Pillowtop Mattress
- Day/Night Shades
- Howard Miller Designer Clock
- 30oz Sculpted Nylon Carpet
- ½" 6 lb. Rebond Carpet Pad
- Porcelain Toilet
- 36" 1-pc. Fiberglass Shower w/ Seat
- Enclosed Utility Center with Locking Door
- Dual Side Mount Battery Boxes
- Black Tank Flush System - 48gal Tank
- 1" Locking Baggage Door

Just a sampling of what makes Grand Junction an unbeatable value. Premium features and outstanding quality equals incredible value.

More Floorplans on Back

2006 GRAND JUNCTION FLOORPLANS



*Floorplan configurations are subject to change and modification without prior notice.

2006 GRAND JUNCTION PREMIUM FEATURES

CONSUMER CONVENIENCE PACKAGE

- Dual Attic Vents • Water Filter • Dual Battery Boxes • Utility & Patio Lights • Prep for 2nd AC •

Premium Ceiling Fan • A&E 8500 Awning • Fluorescent Light in Galley • 10 In. Entry Step • Satellite Prep • Black Tank Flush System • Quick Release Front Jack Pins • Solid Wood Refrigerator Inserts • XL Folding Entry Assist Handle • Stainless Pull-out Spray Faucet

MILE HIGH PREMIUM PACKAGE*

- Solid Surface Counter Tops & Backsplash • Freestanding Sliding Table w/Flip Storage • Howard Miller

Designer Clock • Ext. Shower w/Quick Connect • Ball Bearing Drawer Glides • 30 Oz. Sculpted Nylon Carpet • 1/2 In. 6lb. Rebound Carpet Pad • 36 In.-1 Piece Fiberglass Shower w/Seat • Ash Solid Wood & Stained Cabinet Stiles • Dinette Chairs (2 with storage-2 Folding) • Ash Solid Wood & Stained Crown Slide Fascia • Designer Bedroom Ensemble w/Wood Headboard • 50 Amp Detachable Power Cord • Recessed Solid Wood Steps • 6 Panel Residential Doors

*Includes Consumer Convenience Package

Standard Features

Drop Frame Chassis Design • 10" I-Beam Cambered Steel Chassis • Armstrong Linoleum w/Tough Guard • Heated/Insulated Enclosed Underbelly • Amana Oven-21 In. • Vented Windows • Norcold Refrigerator-8 Cu. Ft. • Metal Vanity Faucet • Fiberglass Vanity Sink • Front & Rear Gel Coat Fiberglass Caps • Laminated/Vacuum Bonded Sidewalls • Aluminum Roof Truss (5 In. Tapered Box) • Radius Roof Transition (Aluminum) • Fabric Wrapped Fashions • Saddlebag Storage • X-long Rain Spouts • X-Wide Electric Front Jacks • Brushed Nickel Hardware • R14 Roof Insulation • Smoke & CO Detectors • Autstell Patterned Glass Accents • Water Closet Window (n/a-35TMS) • 1" Locking Luggage Doors

Product information, specifications, and photography in this brochure were as accurate as possible at time of printing. Photographs may contain some features that are optional on your vehicle. Since we continually strive to improve our products, actual products may differ. Prices and specifications are subject to change without notice. All capacities are approximate and dimensions are nominal. Some features or options may be different or unavailable in Canada. Vehicles are designed for recreational use only and not intended for use as a primary residence.

Vehicle loading - Every effort has been made to provide the greatest number of options for the recreational vehicle owner. Along with these choices comes the responsibility to manage the loads that are imposed by the choices that they remain within the manufacturers specified chassis weight limits. Do not overload the recreational vehicle. Dry weights based on standard features - Some optional equipment included in base weights. Net carrying capacity (NCC) is determined by subtracting unloaded vehicle weight (UVW) from gross vehicle weight (GVWR) and includes fluids, options and cargo. Liquid capacities and weights are approximates only. Warning - This information is intended as a guide only. Weights of individual vehicles may vary. Consult your owner's manual for complete loading, weighing and towing instructions.

See Web Site for Weights, Dimensions and Decor Choices.

EASY LIVING PREMIUM PACKAGE

- Gel-Coat Fiberglass Exterior • Electric Rear Stabilizing Jacks • Convection Microwave (Over The Range-Vented) •

Vinyl Soft Touch Ceiling • 27 In. Stereo TV • 300 Watt 5.1 Home Theatre System • 98 Gallon Fresh Water Tank • 40K BTU Furnace • Porcelain Toilet • Rear Ladder • Hide-A-Bed Sofa • Rocker Recliners (1 for 32TCG) • Pull-Out Sliding Pantry with Lock • Halogen Lighting Package • Day/Night Shades • King-Size Pillow-Top Mattress (Queen in 29DRK and 29DRL) • 12 Gallon Water Heater • Sealed Burner Range • Washer/ Dryer Prep • 15K BTU AC with Remote • Transom Window • End Table with Lamp (NA-32TCG) • Enclosed Exterior Utility Center

TOURING PERFORMANCE PACKAGE

- MOR/ryde Rubber Absorption Suspension System • MOR/ryde Rubber Shear Spring Pin Box • 16" E-Rated Heavy Duty RV Radial Tires • Easy Lube Axles • 8 Lug Aluminum Alloy Rims • 16" Spare Tire & Carrier • Dual 7000 lb. Axles



See your local Grand Junction dealer for available options.



2164 Caragana Court • Goshen, IN 46526
Sales: 574-534-1224 • Fax: 574-975-0601
www.grandjunction-rv.com

YOUR LOCAL DEALER