

2007 Lite-Weight Travel Trailers & Fifth Wheels

ADIRONDACK



Share the Adventure of a Lifetime

ADIRONDACK



When it's time for that well deserved vacation, the luxury and comfort of Adirondack will help you relax in style. Adirondack's charming interior décor features white raised panel cabinets, premium fabrics and residential-style furnishings. Adirondack is sure to impress the most discriminating buyer.



You will find plenty of pleasing touches in every Adirondack model. Large living areas, spacious kitchens with generous storage, and sizeable bedroom and bathrooms make Adirondack your best value when it comes to lite-weight travel trailers and fifth wheels.

Adirondack is available with a new maple & cherry two-tone cabinet door package. This exciting new option will let your Adirondack stand out from the crowd.



Sizable bedrooms with queen beds and generous storage areas are staples of the Adirondack product line.

Plus, a designer headboard with bedspread pillows and matching curtains are standard!



Adirondack features large bathrooms with a standard skylight and window.

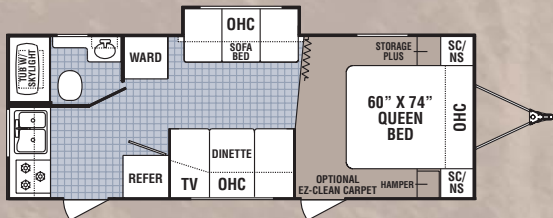
Adirondack floorplans feature spacious galleys with ample countertop and storage space. A double door refrigerator, large oven with cooktop, large microwave oven and a range hood with light and fan are standard features on all Adirondack models.

Plus, many floorplans include a bonus storage pantry and a large pots and pans drawer.

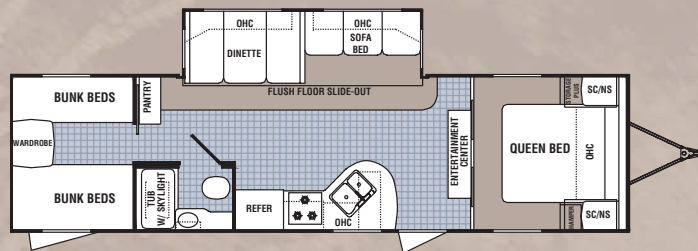


ADIRONDACK

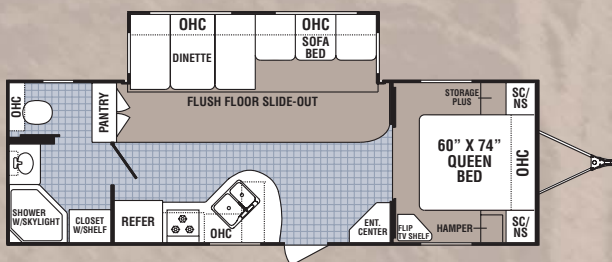
2007 Lite-Weight Travel Trailers



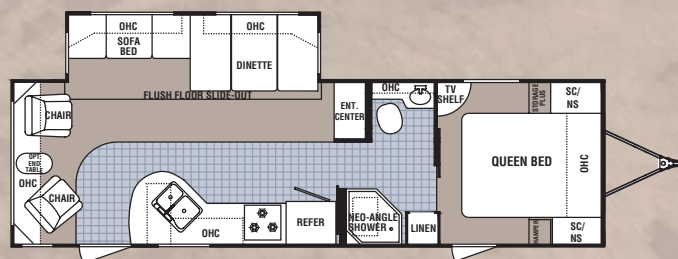
26RK-SL



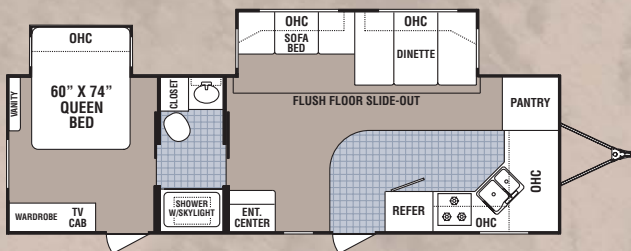
30QB-DSL



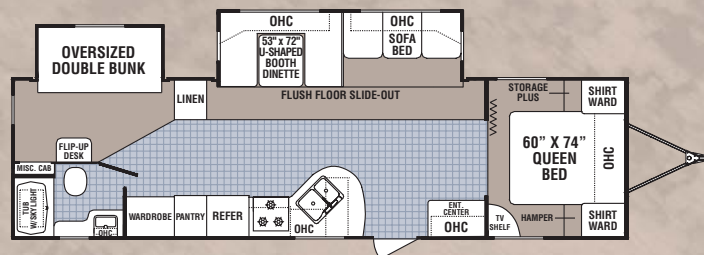
27FB-DSL



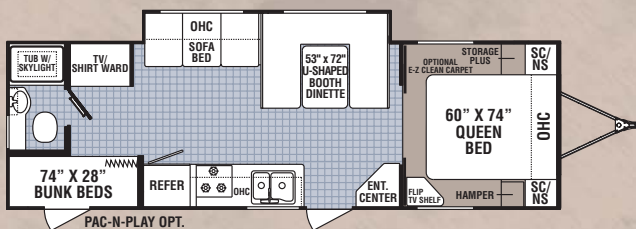
30RL-DSL



27FK-DSL



31BH-DSL



30BH-SL (available with Pac-n-Play storage option)



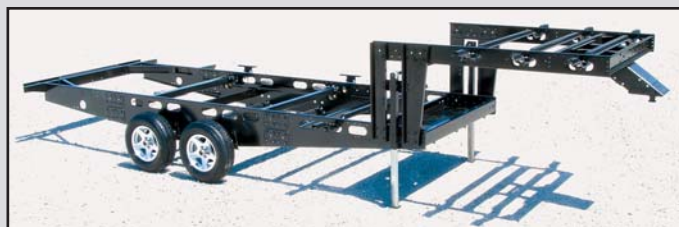
31RL-DSL



AN ADIRONDACK EXCLUSIVE!

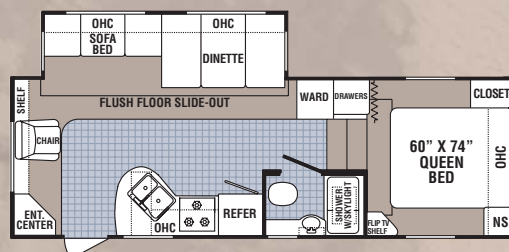
Developed exclusively for Adirondack, the *Power-V* is the latest in chassis design.

The *Power-V Chassis* is designed to be lightweight while rigid to carry maximum loads. *Power-V* features a lifetime rust-through warranty with durable powder-coat over E-coat paint finish.

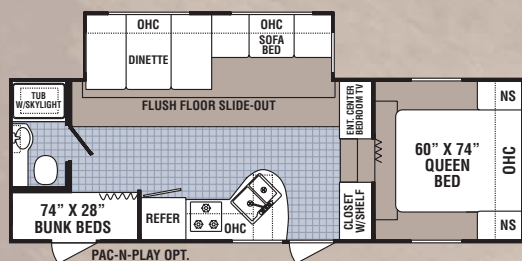


Adirondack's Lite-weight construction means larger floorplans that weigh 1000-1500 lbs. less than the competition!

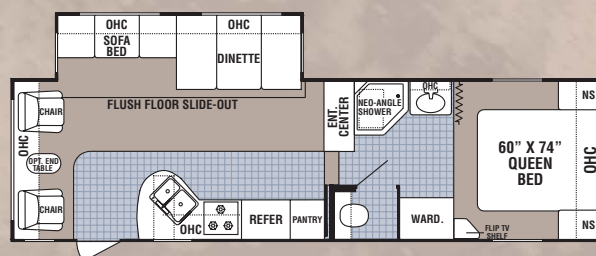
2007 Lite-Weight Fifth Wheels



24RL-M5



24BH-M5 (available with Pac-n-Play storage option)



27RL-M5

Travel Trailers

Fifth Wheels

	26RK-SL	27FB-DSL	27FK-DSLBS	30BH-SL	30QB-DSL	30RL-SL	31BH-DSL	31RL-DSL	24BH-M5	24RL-M5	27RL-M5
*Axle Weight	3692	4983	5460	4158	5141	5277	5556	5822	5089	4948	5483
*Dry Hitch Weight	420	533	588	476	948	602	736	583	1072	1164	1178
*Unloaded Vehicle Weight	4112	5516	6048	4634	6089	5879	6292	6405	6161	6112	6661
GVWR	6000	7600	7600	6000	7600	7600	7600	7600	8400	8400	8400
Cargo Capacity	1888	2084	1552	1366	1511	1721	1308	1195	2239	2288	1739
Exterior Length	27'1"	30'4"	32'4"	30'4"	35'5"	32'4"	35'5"	33'9"	28'0"	26'10"	30'6"
Exterior Width	8'	8'	8'	8'	8'	8'	8'	8'	8'	8'	8'
Exterior Height w/A/C	9'8"	10'8"	10'8"	9'8"	10'8"	10'8"	10'8"	10'8"	12'2"	12'2"	12'2"
Fresh Water Tank	38	46	46	46	46	46	46	46	46	46	46
Grey Water Tank	36	36	72	36	36	36	36	36	36	36	36
Black Water Tank	22	34	36	22	34	34	34	34	36	36	36
Tire Size	ST205/75D14(C)	ST205/75R15(C)	ST205/75R15(D)	ST205/75D14(C)	ST205/75R15(D)	ST205/75D15(C)	ST205/75D15(C)	ST205/75R15(C)	ST205/75R15(C)	ST205/75R15(C)	ST205/75R15(C)
Furnace Size	30,000	30,000	30,000	30,000	30,000	30,000	30,000	30,000	30,000	30,000	30,000

Vehicle loading – Every effort has been made to provide the greatest number of options for the recreation vehicle owner. Along with these choices comes the responsibility to manage the loads that are imposed by the choices that they remain within the manufacturer's specified chassis weight limits. Do not overload the recreational vehicle. Net carrying capacity (NCC) is determined by subtracting unloaded vehicle weight (UVW) from gross vehicle weight (GVWR) and includes fluids, options and cargo. Liquid capacities and weights are approximations only. Warning – This information is intended as a guide only. Weights of individual vehicles may vary. Consult your owner's manual for complete loading, weighing and towing instructions.

*Axle weight, UVW and Dry Hitch Weight are base weights of units without options. Each unit includes a weight label which lists specific weight information for that unit.

Photographs may contain some features that are optional on your vehicle. Since we continually strive to improve our products, actual products may differ. Prices and specifications are subject to change without notice. All capacities are approximate and dimensions are nominal. Some features shown are optional and may be different or unavailable in Canada.

ADIRONDACK

Lite-Weight Construction

CHASSIS

1. Folding entry step – low step height for easy entry
2. Ultra-lube hubs. Grease Zerk makes wheel bearings easy to lube. Extends life of bearings
3. Rubber torsion “independent suspension” axles - the smoothest ride in the industry!
4. All tanks mounted in frame. Lowers the center of gravity, and saves valuable interior storage space
5. 46 Gallon fresh water tank. Tank design prevents water from standing in tanks during storage. One of the largest fresh water tanks in the industry!
6. Optional enclosed underbelly protects tanks and floor from the hazards of the road
7. *Power-V* lightweight chassis with durable powder-coat over E-coat paint finish
8. Twin 30 lb. LP tanks with ABS cover
9. Integrated heavy duty safety chains

WALLS

5-Ply construction. Fully laminated, aluminum framed construction.

10. Tubular aluminum welded frame – reinforced around door
11. Dark tinted, safety glass radius corner windows
12. Insulated baggage doors with key locks and finger pulls
13. ABS fender skirts
14. Decorative wall board
15. Luan wood backer
16. High density structural foam insulation
17. Luan plywood backer
18. Smooth fiberglass with premium graphics package
19. Pass-through storage compartment (where available)
20. Aerodynamic front profile

ROOF

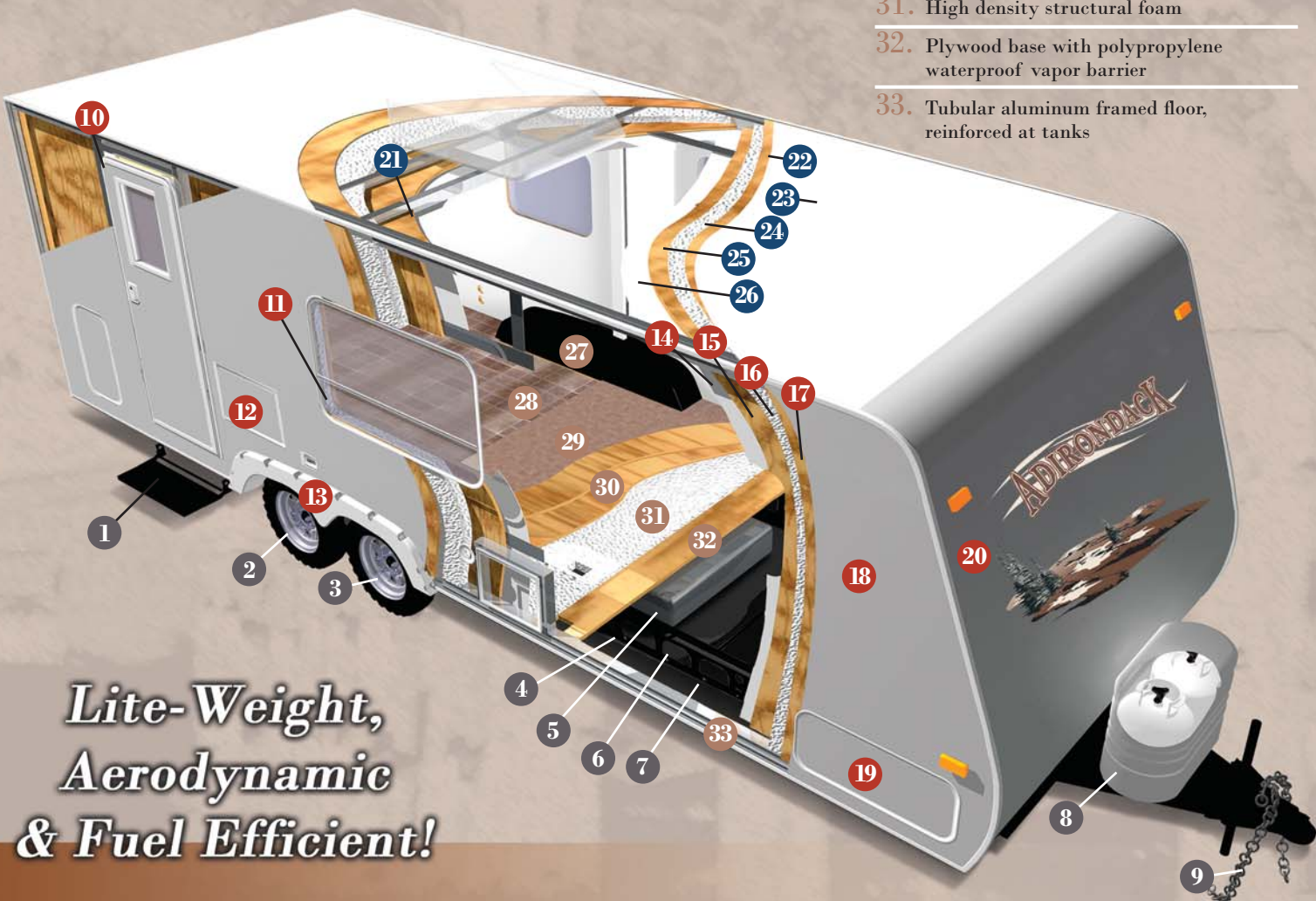
5-Ply construction. Fully laminated, aluminum framed construction.

21. Tubular aluminum radius framed roof reinforced at A/C
22. Luan wood backer
23. One-piece EPDM rubber roof with 12 year manufacturer's material warranty
24. High density structural foam insulation
25. Luan wood backer
26. Decorative ceiling board

FLOOR

5-Ply construction. Fully laminated, aluminum framed floor structure.

27. One-piece composite wheel wells (SL models)
28. Residential vinyl flooring – full length of coach
29. Residential carpet with pad (most models)
30. Two layers of floor decking over aluminum frame and foam
31. High density structural foam
32. Plywood base with polypropylene waterproof vapor barrier
33. Tubular aluminum framed floor, reinforced at tanks



***Lite-Weight,
Aerodynamic
& Fuel Efficient!***

INTRODUCING

THULE[®] SWEDEN

SMART RV

Thule, the industry leader in cargo management systems for cars and trucks, has partnered with Adirondack to create the Smart RV System. This patented system allows Adirondack owners to create a functional outdoor living area that's easy to set up and enjoy. The Smart RV system uses a number of factory-installed anchor pods mounted on the exterior of the trailer.* The accessories mount to the pods in seconds using Thule's innovative quick-release latch system.

The optional Thule Smart RV Camping Package includes:

- Smart RV table with 2 chairs
- 2 Universal hooks
- Smart RV countertop

Smart RV Universal Hook

Here's a great way to wrap cables and cords, hang lanterns and bug zappers, or just dry out your towels!

- 2 Universal hooks per kit
- Rugged powder-coated steel tubes
- Foam padding offers cushion and extra grip



Smart RV Countertop

The perfect surface for a blender, a radio or anything else you've just gotta have to enjoy the great outdoors!

- Blow-molded 40" x 16" polyethylene countertop
- Support arms adjust to ensure a level table surface



Smart RV Table and Chairs

Bring the dining room outdoors with our patented "stable table" system.

- 48" x 24" Heavy duty polyethylene table top with powder-coated adjustable legs
- (2) Camping chairs with Thule logo. Made with black, weather resistant fabric



*Thule system is for use on units built after serial number 120671. Units include wall bracing to accept Thule Pods.

Premium Standard Features



Adirondack's dinette seat, bunk beds, queen beds and pass-through storage compartments are aluminum framed. They are lighter and more durable than the competitors' wood frame structures.



80% Dark tint windows keep your Adirondack cool on warm days.



Adirondack's oversized, pass-through storage compartment is carpeted and includes a convenience light. (most models)



5-spoke aluminum rims are standard on Adirondack!



The standard 6 gallon gas/electric water heater features direct spark ignition (DSI) for easy lighting.



Adirondack rides on rubber torsion "independent suspension" axles with 4-wheel electric brakes.

The standard enclosed underbelly enhances the aerodynamics on Adirondack and protects the fresh water holding tanks and floor from the hazards of the road.



ADIRONDACK

STANDARD FEATURES

Standard Exterior Features

- Lite-weight aerodynamic design
- *Power-V* lite-weight chassis with highly durable e-coat and powder coat finish
- Rubber torsion "independent suspension" axles with 4-wheel electric brakes
- Laminated 5" crowned roof structure
- EPDM one piece seamless rubber roof
- Welded aluminum/laminated superstructure (roof, floor and walls)
- Radius corner entry door with deadbolt lock
- Composite wheel wells
- Folding entry step
- High-end designer graphics
- Rain gutters with downspout's
- Color ABS fender skirts
- Break-away trailer switch
- 120V exterior outlet

- Dark-tint, radius corner, clamp ring, safety glass windows
- Step light with switch
- "Storage Plus" exterior pass-through storage with light (most models)
- Two 30 lb. LP tanks with ABS cover
- Courtesy light at hitch
- Courtesy light at tank drain
- Electric slide motor
- Electric front jack (fifth wheels)

Appliances and Electrical

- 6 Cu.ft. *Norcold* double-door gas/electric refrigerator
- 3 Burner range with "quick boil" burner and large oven
- Range hood with 12V light and exhaust fan
- Systems monitor panel
- Ducted heat
- Forced air DSI furnace with wall thermostat

- Roof ducted for A/C
- Pre-wired for A/C
- Pre-wired for stereo
- Solid state converter with built-in battery charger
- LPG/Smoke/CO detector
- Fire extinguisher
- Data/phone jack
- 30 Amp power cord with exterior storage compartment
- Demand water pump

Standard Interior Features

- Raised panel cabinet doors
- Residential tile-like flooring
- Carpet (see floorplan)
- Décor wallboard with easy-clean vinyl coating
- Reversible arched back dinette seats
- Premium light fixtures
- Décor-coordinated wallpaper border
- Mini blinds throughout
- Designer glass light over dinette

- table (most models)
- Designer window treatments
- Premium sofa with roll-over design
- Skylight roof vents
- TV shelf/cabinet

Kitchen Features

- Residential faucet
- Hide-a-bed sofa
- Double bowl sink

Bedroom Features

- Designer lights in bedroom
- Décor-coordinated bedspread and headboard
- Mirrored wardrobe closets

Bath Features

- Power roof vent in bathroom
- Skylight over tub/shower
- Medicine cabinet (most models)
- Fiberlink bathtub with curtain or neo-angle shower tub
- Tub/shower surround

OPTIONAL FEATURES

Comfort Group

- 13.5 BTU air conditioner with wall thermostat
- AM/FM/CD player with speakers
- A&E 8300 series awning
- TV antenna with cable prep
- Large microwave

Adirondack Pack

- Bedroom & sofa pillows
- Entry assist handle
- Coat & towel hooks
- Dual sink covers
- Scare light
- Lock box

Other Optional Features

- Aluminum rims
- Enclosed Underbelly
- Heated holding tanks (3)
- Four corner stabilizer jacks
- Roof ladder (N/A 26RK)
- Exterior barbecue
- Exterior hot and cold spray-away station
- *Fantastic* vent
- Night shades
- Bike rack

- Water filter with spout
- 15,000 BTU roof A/C
- Stove cover
- Pac-n-Play storage compartment (where available)
- Free-standing dinette (some models)
- *AudioLite* exterior sound system with 2 speakers
- Spare tire (with carrier on DSL, cover on others)
- Exterior entry-assist handle at door

- Gas/electric water heater with DSI
- Surround sound system with CD/DVD player
- 15" Flat screen TV
- Bifold shower door
- Diamond plate front wall
- "Zero wall" recliner
- 6 Cu.ft. *Norcold* double-door gas/electric refrigerator
- *Thule* SmartRV Package

Decor Choices



Earth



Cayenne



Nickel



Vanilla Mocha



**1 YEAR BUMPER TO HITCH
LIMITED WARRANTY**

**2 YEAR STRUCTURAL & APPLIANCE
LIMITED WARRANTY**

*See owner's manual for complete warranty details.

ADIRONDACK

2164 Caragana Court ■ Goshen, IN 46526
(574) 534-1224 ■ Fax: (574) 975-0556

www.adirondack-rv.com

Your Local Dealer:



rev.1AD12/06
©2006Thor Industries, Inc.