

2007 Wild Thing Ultra-Lite 102" Wide Body Toy Hauler

# Wild THING®

*The Ultimate  
Toy Hauler*





# WILD THING - THE TOY HAULER DESIGNED BY PEOPLE WHO USE THEM



## The Ultimate Toy Hauler

Designed by people who use toy haulers, *Wild Thing* is the ultimate in features, function and value. We asked toy hauler users from across North America for the features and options they want on their next rig.

We've listened to your requests and assembled them to create the industry's *most advanced* toy hauler.

You asked for it. Now you can have it - *Wild Thing*.





# 102" WIDE BODY - ULTRA-LITE WEIGHT TOY HAULER

## Modern Interior Design

Rich cherry cabinets, stainless steel appliances, modern lighting and smooth decors and fabrics make *Wild Thing* stand out from the crowd. Don't forget about storage! *Wild Thing* provides the room you need to store your gear with more cabinets, shelving and pantry space than the competition.



## Monster Bed

Toy Haulers are more than just mobile garages - you have to be able to sleep in them too. That's why *Wild Thing* includes comfortable sleeping areas with amazing amounts of storage and one of the largest beds in the industry - 60" x 96" standard in travel trailers and optional in fifth wheels.



## Premium Audio Package

The standard package includes AM/FM/CD stereo deck, 2 interior speakers, 1 flat panel *Intier®* and 2 exterior speakers. Enhance your system with *Wild Thing's* optional TV/Audio Package. It includes the standard package plus a 15" or 20" LCD TV, an upgraded AM/FM/CD/DVD stereo deck, 2 additional interior speakers and a subwoofer.





# WILD THING - THE INDUSTRY'S BEST CARGO AREAS



*Wild Thing* is designed to carry more. At an exterior 102" width and an interior 96" wall to wall dimension, *Wild Thing* gives you the room you need for your toys. Plus, *Wild Thing* offers floorplans with up to 18' long cargo areas. We're sure to have the model for you.

## *Happi-Jac® Bunk System*

Both bunks store against the ceiling when not in use to create extra headroom in the cargo area. The bottom queen bunk easily converts from a bed to a front or rear facing sofa for extra seating.  
(Optional)



## *Premium Standard Features*



### **"D-Ring" Tie Downs**

*Wild Thing* includes a "D-ring" cargo management system.



### **Easy-Latch Door**

Key-locking security cam locks on the rear door protect your valuables.



### **SMEV® Range/Oven**

*Wild Thing* features a SMEV® 4 burner range with integrated broiler oven. It also includes a hinge-top stove cover.



# LOW RIDER EDITION VS. BIG AIR EDITION



**Low Rider**

**Big Air**

All *Wild Thing* floorplans are available in the *Low Rider Edition* or the *Big Air Edition*.

The *Low Rider Edition* (LR) keeps the trailer body close to the ground (approximately 22") making it easy to load motorcycles.

If you need more ground clearance for off-road use, choose the *Big Air Edition* (BA). The trailer body is 10" higher than the *Low Rider Edition*. It increases ground clearance and eliminates the interior wheel wells for additional storage.



*Wild Thing's* rear screen door option lets fresh air in and keeps the bugs out.

## Premium Standard Features



### Removable Carpet

Roll up the carpet and store it away when it's time to load up. (Optional)



### Auxiliary Fuel System

The 30 Gallon tank features a 12V fuel pump and a 6' fuel hose. (Optional)



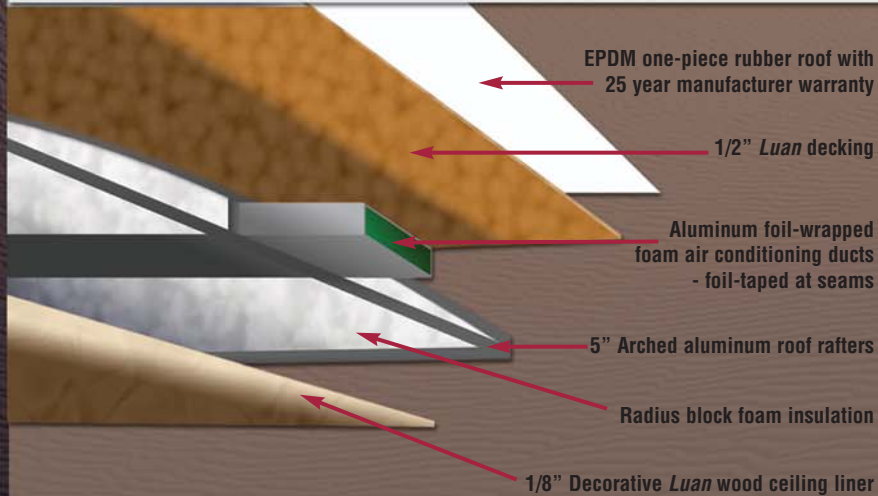
### Chairs & Windows

*Wild Thing* offers a dual chair and picture window option in place of the folding dinette.

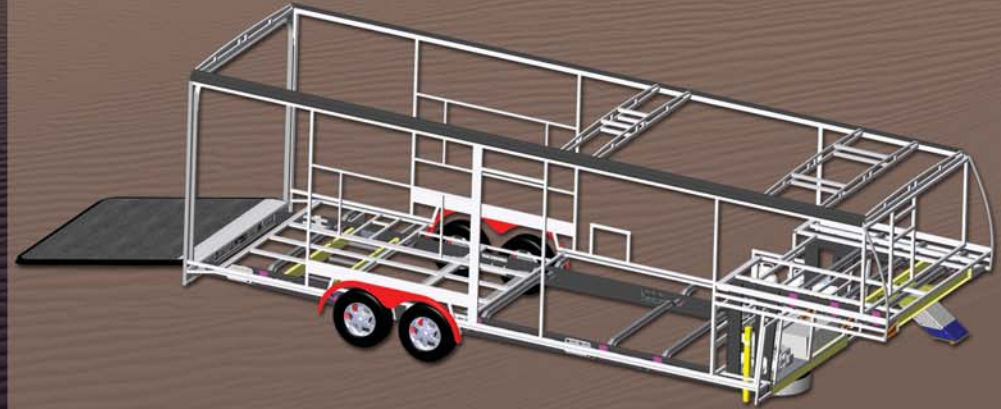


# 100% ALUMINUM-FRAMED - LAMINATED CONSTRUCTION

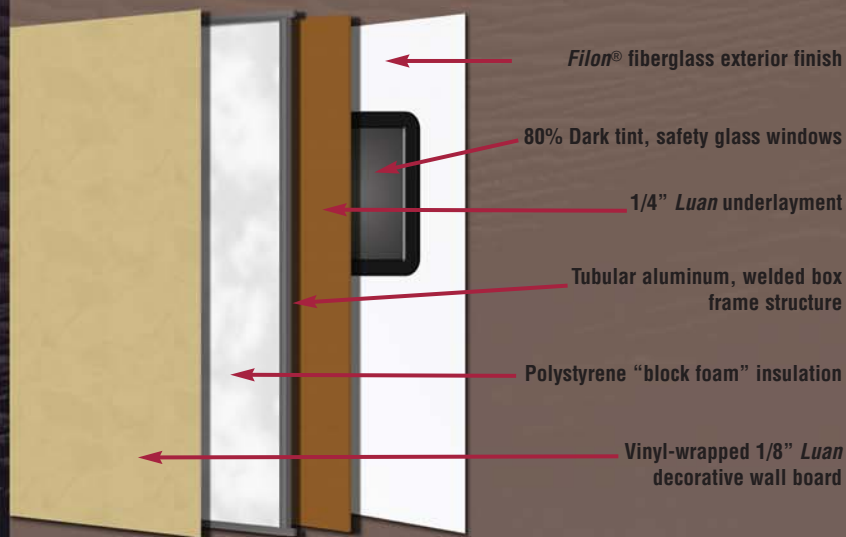
## Laminated Roof Construction - Aluminum Framed



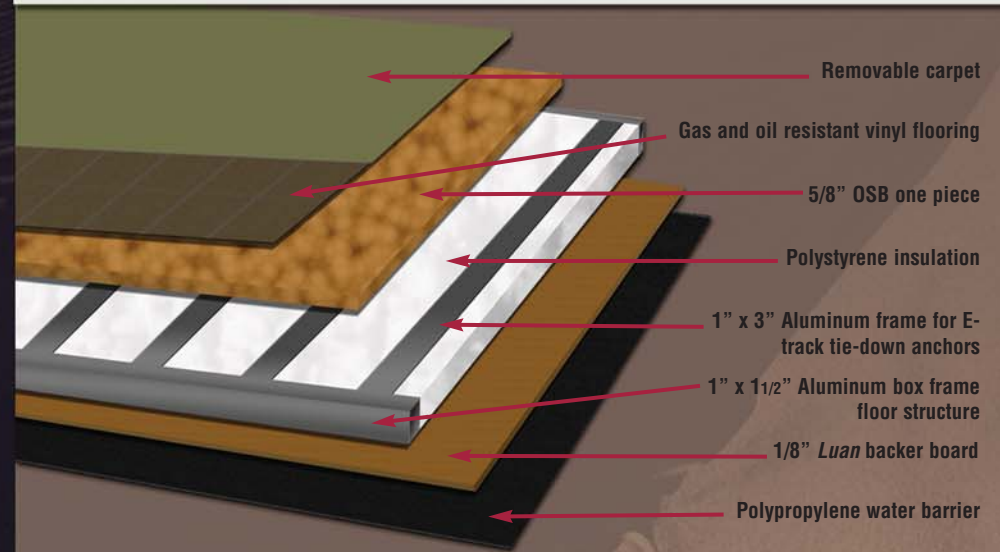
## 6-Way Welded, Ultra-Lite Aluminum Frame



## Laminated Wall Construction - Aluminum Framed

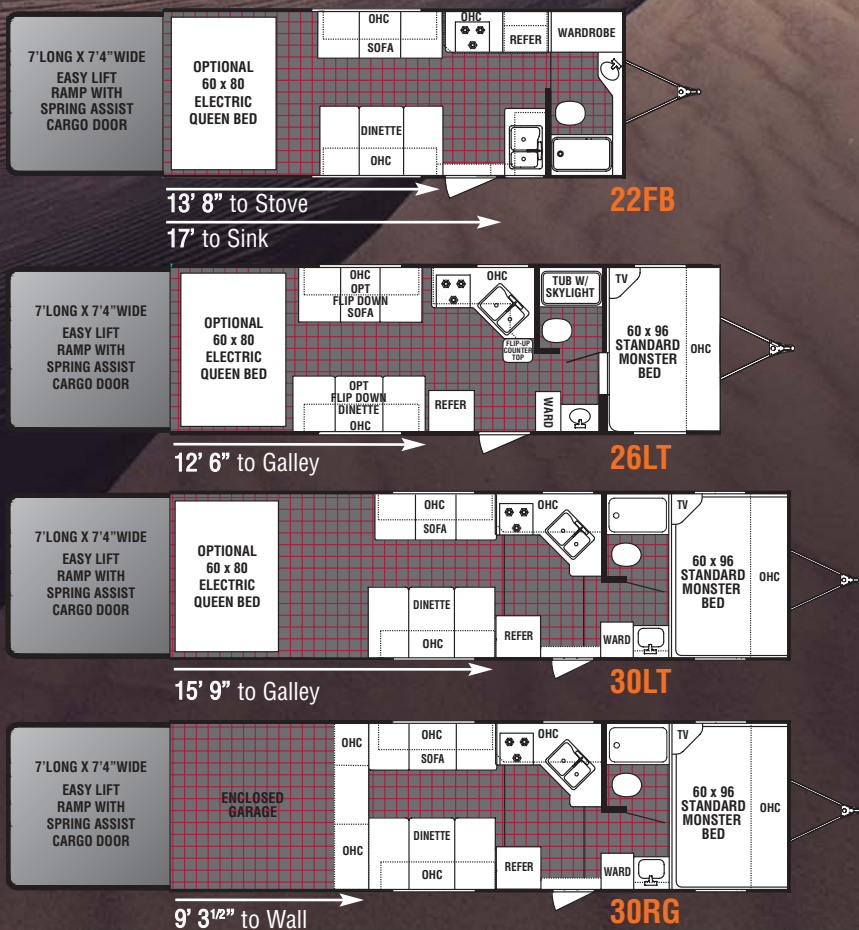


## Laminated Floor Construction - Aluminum Framed

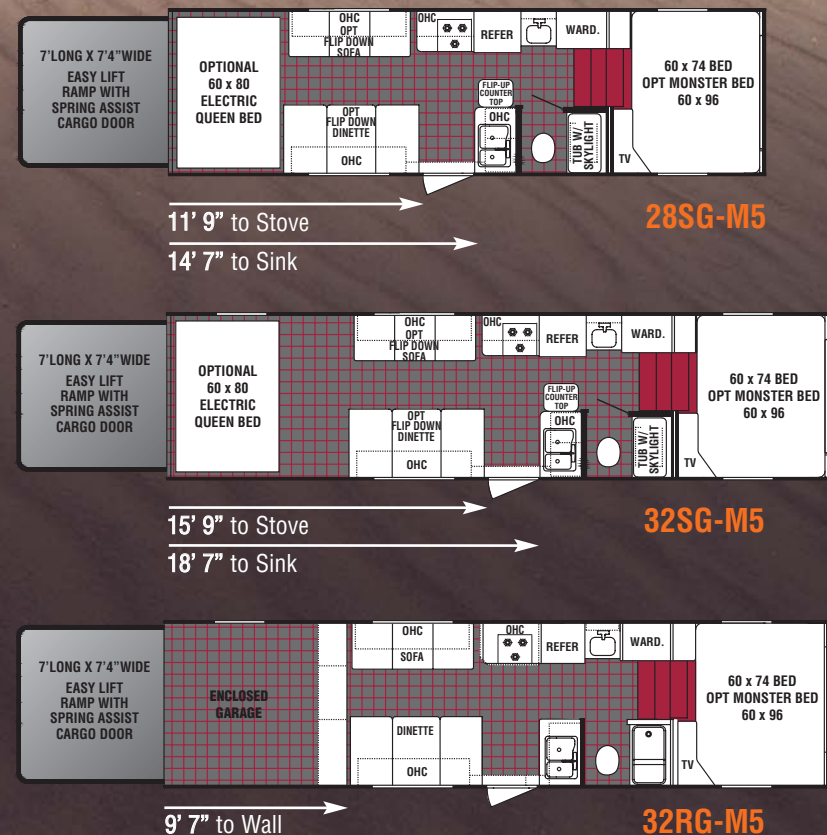


# FLOORPLAN GUIDE

## Travel Trailers



## Fifth Wheels



## Weights and Specifications\*

**Style	Hitch Weight (lbs.)	Unloaded Vehicle Weight (lbs.)	GVWR (lbs.)	Net Cargo Capacity (lbs.)	Exterior Length	Exterior Width	Fresh Water (Gallons)	Grey Water (Gallons)	Black Water (Gallons)
22FB LR	NA	NA	NA	NA	25'4"	102"	150	43	43
22FB BA	NA	NA	NA	NA	25'4"	102"	150	43	43
26LT LR	1166	6532	10,000	3468	29'10"	102"	150	43	43
26LT BA	1178	6532	10,000	3468	29'10"	102"	150	43	43
30LT LR	1435	6845	10,000	3155	33'3"	102"	150	43	43
30LT BA	1460	6845	10,000	3155	33'3"	102"	150	43	43
30RG LR	1435	6845	10,000	3155	33'3"	102"	150	43	43
30RG BA	1460	6845	10,000	3155	33'3"	102"	150	43	43
28SG LR	1818	7450	11,000	3550	29'11"	102"	150	43	43
28SG BA	1698	7450	11,000	3550	29'11"	102"	150	43	43
32RG LR	1850	7850	11,000	3150	33'11"	102"	150	43	43
32RG BA	1850	7850	11,000	3150	33'11"	102"	150	43	43
32SG LR	1850	7850	11,000	3150	33'11"	102"	150	43	43
32SG BA	1850	7850	11,000	3150	33'11"	102"	150	43	43

Tire Size All Models: ST225/75R15(D) Furnace Size All Models: 30,000

\*See vehicle loading information on back cover\*\*Choose between the *Low Rider Edition* (LR) and the *Big Air Edition* (BA). See page 5 for description.



# WILD THING - YOUR BEST TOY HAULER VALUE!

## Standard Exterior Features

### Construction & Exterior Features

102" Wide body product line  
96" Interior wall to wall dimension  
Lite-weight aerodynamic design  
Fiberglass exterior skin  
6-Way welded aluminum, laminated superstructure (roof, floor and walls)  
1 3/4" Thick, laminated floor structure with reinforcements in cargo garage  
Laminated and insulated 6 1/2" crowned roof structure - ducted for roof A/C  
EPDM one-piece seamless rubber roof  
Fiberglass front cap  
Radius corner entry door with deadbolt lock  
Quad battery rack - sized for four 6 or 12 volt deep-cycle batteries  
Load rated radial 225/75R15 tires  
Bottom hinged, spring-assist cargo door with 2500 lb. rating  
Grip door covering  
Dual key-locking security "Easy Latch" cam locks on rear door  
All doors and compartments keyed the same  
"D-Ring" cargo management system in floor  
Back-up lights  
Safety glass  
Folding entry step  
High end designer graphics  
Rain gutters with corner downspouts  
Aluminum fender skirts  
Radius corner slider windows  
Entry-assist handle at door  
Two 30 lb. LP tanks  
Break-away trailer switch  
120 Volt exterior outlet  
Courtesy light at hitch  
Electric front jacks with remote (fifth wheels)  
150 Gallon fresh water system

Rear flood lights with switch  
Ram air ventilation system  
Manual stabilizer jacks (TT & FW)  
ABS LP bottle cover (travel trailers)

### Big Air Edition

Beaver-tail design with body raised additional 10"

### Low Rider Edition

Beaver-tail design with lowered body & cargo door

### Electrical/Appliances and Kitchen Features

Stainless steel appliances  
*Norcold*® double-door gas / electric refrigerator  
*SMEV*® range and broiler oven with glass cover  
Range hood with 12 volt light and exhaust fan  
Systems monitor panel  
6 Gallon gas / electric water heater with DSI  
Forced air DSI furnace with wall thermostat  
30,000 BTU LP furnace - Floor ducted heat  
Roof ducted A/C  
Solid state converter with built-in battery charger  
LPG / Smoke / CO detector  
Fire extinguisher  
30 Amp detachable marine-grade power cord  
12 Volt demand water pump  
*SMEV*® sink with integrated drain board, faucet and glass sink cover  
Flip-up countertop extension (most models)  
Cherry finish, raised panel cabinet doors  
Steel ball bearing roller drawer glides  
Cherry finish, raised panel refrigerator insert  
Oil and gas resistant, vinyl flooring - designed for toy haulers  
Décor wallboard with easy-clean vinyl coating  
Residential-style light fixtures with halogen countertop accent lighting  
Night shades throughout  
Designer window treatments  
Entertainment center - designed for larger TV's  
AM/FM/CD stereo with 2 interior, 1 flat panel speaker and 2 exterior speakers

## Bedroom Features

Designer lights in bedroom  
Décor-coordinated bedspread and headboard  
Large wardrobe closet  
Large storage cabinets

## Bath Features

Power roof vent in bathroom  
Skylight over tub / shower  
Medicine cabinet  
Fiberlink bathtub with bifold door  
Tub / shower surround

## Optional Features

### Wild Thing Package Option

13.5 BTU air conditioner with wall thermostat  
*A&E*® 8500 series awning  
TV antenna with cable prep  
Large microwave

### Toy Hauler Options

(2) Swivel chairs and large bay window in place of dinette  
Single pull down queen bed  
Monster bed 60" x 96" (fifth wheel)  
Two *Happi-Jac*® electric queen bunks  
One *Happi-Jac*® electric queen bunk and one lower sofa / bunk  
Remote control for bunk beds  
Folding wall-mounted dinette  
Folding wall-mounted sofa  
Decorative fabric skirt below sofa & dinette  
Removable carpet in cargo area  
Rear rollaway cargo garage screen door with *Wild Thing* logo  
Rear canopy and screen room for ramp door

### Wild Thing Tattoo Package

Premium graphics package includes "arm band" exterior wall graphics and etched window graphics

## Wild Thing TV/Audio Package

Includes Standard Audio Package Plus the Following Upgrades

Upgraded AM/FM/CD/DVD stereo system  
2 Additional speakers  
Subwoofer  
15" LCD TV (12V)

## Wild Thing Auxiliary Fuel System with Generator Ready

30 gallon fuel tank  
Locking compartment door  
Fuel fill hose with nozzle  
12 Volt fuel transfer pump  
Tap line for auxiliary generator

## Dometic Seitz® Skylight

Large 26" x 38" safety skylight over fifth wheel bedroom  
Roller shade and roller screen  
Three venting positions

## Wild Thing Power Station Package

4.0 *Onan MicroQuite*® generator (requires Auxiliary Fuel System)

## Other Optional Features

Premium *Alufiber*® exterior skin  
Aluminum rims  
15,000 BTU air conditioner upgrade  
Enclosed underbelly  
Electric tongue jack (travel trailers)  
Roof ladder (most models)  
Exterior barbecue  
Exterior hot and cold spray away station  
12 Volt heat pads for tanks  
*Fantastic*® variable speed roof vent  
8 Cubic foot double door refrigerator  
Spare tire with carrier  
15" LCD TV  
20" LCD TV  
Remote for 5th wheel electric jacks  
Triple X awning with *Wild Thing* logo

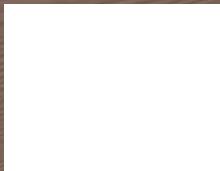
A Division of Dutchmen Manufacturing, Inc.  
2164 Caragana Court • Goshen, IN 46526  
574-534-1224 • Fax 574-825-4939

[www.wildthing-rv.com](http://www.wildthing-rv.com)

## Fabric Choices



Envy (Green)



Onyx (Black)



Fire (Red)

**Vehicle loading** - Every effort has been made to provide the greatest number of options for the recreational vehicle owner. Along with these choices comes the responsibility to manage the loads that are imposed by the choices that they remain within the manufacturer's specified chassis weight limits. Do not overload the recreational vehicle. Some optional equipment not included. Net carrying capacity (NCC) is determined by subtracting unloaded vehicle weight (UVW) from gross vehicle weight (GVWR) and includes fluids, options and cargo. Liquid capacities and weights are approximations only. **Warning** - This information is intended as a guide only. Weights of individual vehicles may vary. Consult your owner's manual for complete loading, weighing and towing instructions. \*UVW and Hitch Dry Weight are base weights of units without options. Each unit includes a weight label which lists specific weight information for that unit.

Product information, specifications, and photography in this brochure were as accurate as possible at time of printing. Photographs may contain some features that are optional on your vehicle. Since we continually strive to improve our products, actual products may differ. Prices and specifications are subject to change without notice. All capacities are approximate and dimensions are nominal. Some features or options may be different or unavailable in Canada. Vehicles are designed for recreational use only and not intended for use as a primary residence. All product brand names used in this brochure are registered trademarks of Thor Industries, Inc. Unauthorized use of trademarks is prohibited by law.

rev1WT9-06  
©Thor Industries, Inc.

## Your Local Dealer