

COLORADO[®]

Travel Trailers



Begin Your Adventures With Colorado

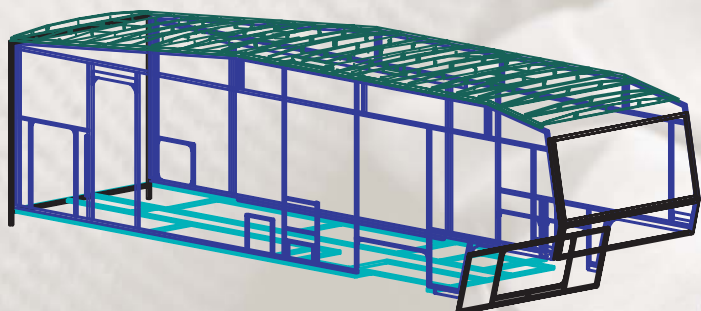
Impeccably designed for discriminating tastes.



30RL-DSL-BS shown in Barcelona Rust

Designed for the discriminating RV owner, Colorado surrounds you in luxury and value.

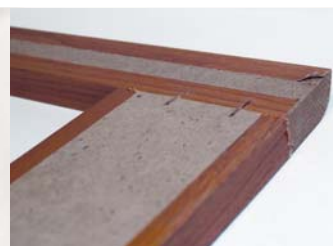
Colorado boasts elegant travel trailer floorplans with spacious and functional kitchens, master baths and bedroom suites. The dazzling residential interior decors distinguish the product from the competition.



6-Way Welded Aluminum Cage Construction



Colorado Hardwood Stiles,
Slot & Screw Construction



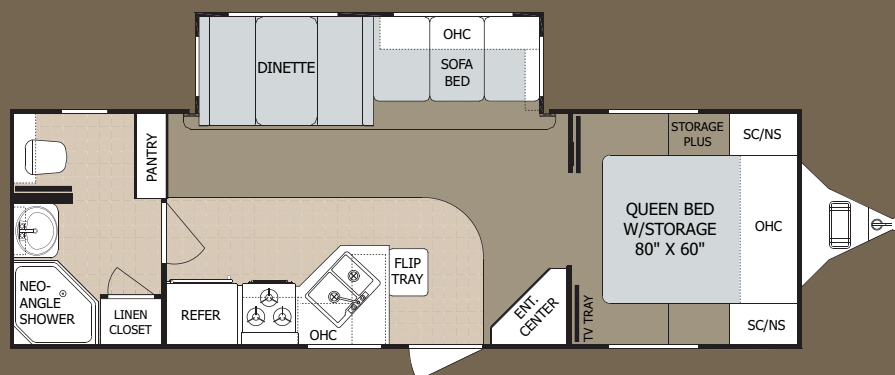
Competitors' Vinyl-Wrapped
Stiles, Staple Construction

Colorado features solid ash hardwood cabinet doors and solid ash cabinet stiles (frames). The hardwood stiles are screwed together and are stained to match the doors. Hardwood doors and stiles will retain their factory new appearance for years of durable use.

Colorado Travel Trailer Weights & Measurements

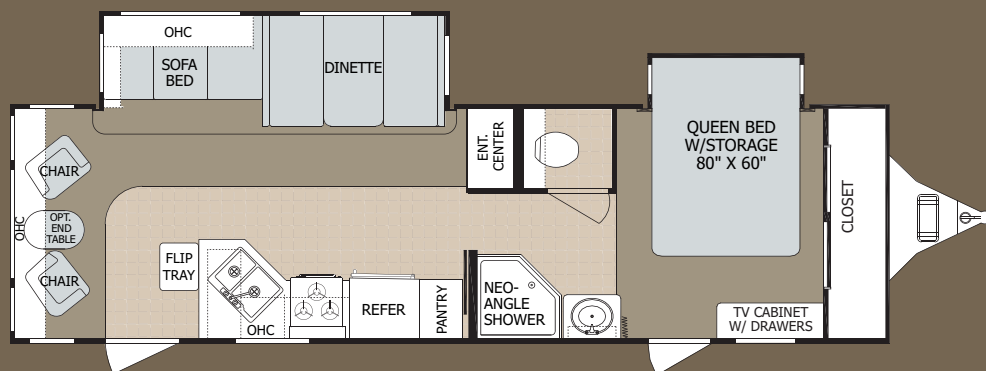
26FB-DSL

Length	30 ft. 6 in.
Exterior Width	8 ft.
Exterior Height	10 ft. 8 in.
Hitch Dry Weight	826
Gross Vehicle Weight	11,176
Unloaded Vehicle Weight	6,591
Net Cargo Capacity	3,986
Fresh Water Capacity	46 gal.
Grey Water Capacity	40 gal.
Black Water Capacity	40 gal.
Tire Size	ST225/75R15(D)
Furnace Size (BTU's)	35,000
Water Heater	10 gal.



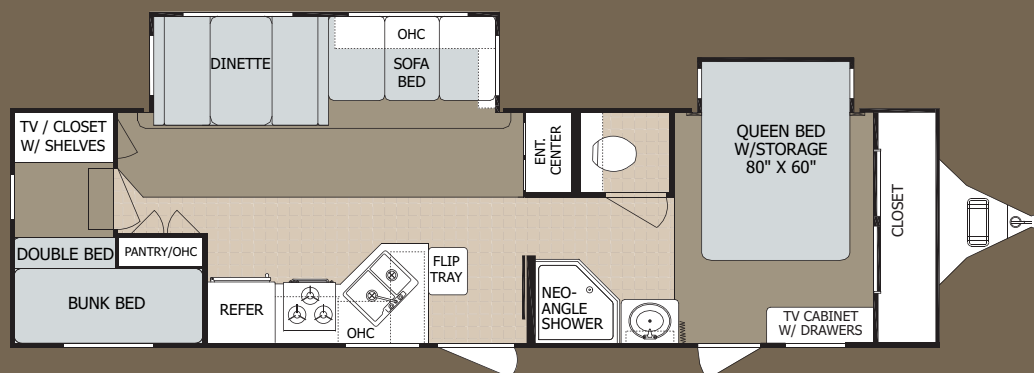
30RL-DSL-BS

Length	32 ft. 9 in.
Exterior Width	8 ft.
Exterior Height	10 ft. 8 in.
Hitch Dry Weight	1,240
Gross Vehicle Weight	11,176
Unloaded Vehicle Weight	7,420
Net Cargo Capacity	3,184
Fresh Water Capacity	46 gal.
Grey Water Capacity	40 gal.
Black Water Capacity	40 gal.
Tire Size	ST225/75R15(D)
Furnace Size (BTU's)	35,000
Water Heater	10 gal.



31BK-DSL-BS

Length	34 ft. 11 in.
Exterior Width	8 ft.
Exterior Height	10 ft. 8 in.
Hitch Dry Weight	1,288
Gross Vehicle Weight	11,176
Unloaded Vehicle Weight	7,758
Net Cargo Capacity	2,962
Fresh Water Capacity	46 gal.
Grey Water Capacity	40 gal.
Black Water Capacity	40 gal.
Tire Size	ST225/75R15(D)
Furnace Size (BTU's)	35,000
Water Heater	10 gal.



Premium standard features make Colorado your best value.

- 6-Way welded, aluminum-framed cage construction
- High gloss Gel-coat fiberglass exterior
- 5-Way lamination process (walls and floor)
- Gel-coat front cap
- Radius roof transition
- 1" Thick baggage doors
- Solid stained ash cabinet stiles, doors and drawer fronts
- Solid stained ash slide fascia
- 80% dark tint safety glass windows
- Residential carpet with 3/8" rebond pad
- Premium appliances and fixtures
- Large 10 gallon quick recovery water heater

Colorado: More Standard Features – More Value

Frame/Chassis Construction

Cambered 8" Steel I-Beam Frame Rails
Powder-Coated Frame with 8" Steel Crossmembers
"Ladder Design" Construction
Laser Aligned Steel Outriggers
5200 lb. Tandem Axles *
Leaf-Spring Suspension
6 Lug Ultra-lube Hubs *
Powder-Coated Painted Steel Wheels
ST225/75R 15 LRD Tires
Electric 12.25" Drum Braking System
Electric "Worm Gear" Slide System
Flush Floor Main Slide System
Above Floor, Steel, Electric Bedroom Slide (BS Models)
Optional: Power Tongue Jack
Optional: 16" Aluminum Rim Package
ST235/80 R16 LRE E-Rated Tires
16" Spare Tire with Steel Rim
Adjustable MOR/ryde Equalizer & Leaf Springs

Body/Coach Construction

Sidewalls

High-Gloss Gel Coat RFP Fiberglass
Laminated Construction
Aluminum-Framed, Welded Box Infrastructure
Luan Fiberglass Underlayment
Polystyrene "Block Foam" Insulation
Vinyl-Wrapped *Luan* Interior Wall Panel
80% Dark Tint "Safety Glass" Windows
3M Automotive Film Graphics
"Tuff Coat" Painted Aluminum Radius Skirt

Front & Rear Walls

Front Cap: Gel Coat Molded Fiberglass
Rear Wall: High-Gloss Gel Coat RFP Fiberglass
Aluminum-Framed, Welded Box Infrastructure
Laminated Construction
1/4" *Luan* Wood Exterior Wall Panel
80% Dark Tint "Safety Glass" Windows
Polystyrene "Block Foam" Insulation
Vinyl-Wrapped *Luan* Interior Wall Panel

Primary Floor

3" Vacuum-Bonded One-Piece Floor Construction
Aluminum-Framed, Welded Box Infrastructure
Polystyrene "Block Foam" Insulation
1/4" *Luan* Panel
Vinyl Vapor Barrier
5/8" Structurewood One-Piece Decking
3/8" 6 lb. Rebond Carpet Pad
Residential Carpet

Sub-Floor/Underbelly

Laminated Construction
1/4" Luan Panel
Poly-Flex 2000 Woven Plastic/Vinyl Aluminum
Bubble Wrap Insulation

Roof/Ceiling

Aluminum Roof Truss with 5" Tapered Box
3/8" Roof Decking
R14 Roof Insulation
Aluminum Radius Roof to Wall Transition
EPDM Rubber Roof Membrane - 12 Year Warranty
Optional: R21 Roof Insulation

Storage Compartment

Aluminum Luggage Door Frames
1" Thick Luggage Door with Lock
Lighted Baggage Areas
Ozite-Lined Compartment

Windows, Doors and Awnings

80% Dark Tint "Safety Glass" Windows *

Egress Window in Bedroom
Domed, Tinted Skylight Above Shower
30" Radius Entry Door & Dead Bolt Lock
Screen Door
8500 Series A&E Awning **
Pivoting XL Entry Assist Handle
Optional: Duo-Pane Windows

Exterior Features

15" Spare Tire with Steel Rim *
Spare Tire Carrier with Lift Kit *
Underbelly (2 piece) - Heated & Enclosed
10" Tread, Steel, Triple Entry Steps - Welded to Frame
Lighted Entry Step
Enclosed/Vented Battery Box
Molded ABS Fender Wells
Exterior Patio & Hitch Lights
Gravity Water Fill
Exterior Shower System with Hot & Cold Water
Black Tank Flush System
City Water Fill with Locking Protective Door
Cable/Phone/Satellite Hook-ups
Rear Ladder *
Attic Roof Vent *
Drip Rail Gutter System with Extended Gutter Spout
Optional: Gel-Coat Fiberglass Sidewalls
Optional: Rear Gel-Coat Fiberglass Cap

Interior Systems

Electrical Systems & Lighting

Interior Electrical Command Center
30 Amp Electrical Service
Detachable Marine-Grade Power Cord
55 Amp Converter
110v GFI Exterior Receptacle
12v Battery Converter/Charger with Overcharge Protection
Battery Box
Residential Wall Switches
Dome Light Above Sofa and Dinette
12v Lighting
Decorative Wall Sconces in Bedroom
Fluorescent Lighting in Galley *
Optional: Fluorescent Lighting Package

Plumbing System

10 Gallon Gas and Electric Hot Water Heater **
Quick-Connect Coiled 25 ft. Hose with Sprayer *
Shurflo Water Pump
"PEX" Polyethylene Tubing
Metal Pressure Fittings
Sewer Hose Storage System
Hot and Cold Water Low Point Drains
See Specifications Charts for Tank Sizes

Climate Control

35K BTU Furnace **
Forced Air Ducted Heat
Forced Air Heat in Underbelly
15K BTU Air Conditioner with Quick Cool Vent *
Ceiling Ducted AC Vents
Mold Resistant, Aluminum-Wrapped AC Plenum
Optional: Fantastic Fan in Bedroom
Optional: Fantastic Fan in Galley/Main Living
Optional: 12v Tank Pads
Optional: R21 Roof Insulation

Key Interior Features

Pre-Drilled & Screwed Hardwood Cabinet Construction
Decorative Stained Hardwood Slideout Fascia **
6 Panel Doors with Brushed Nickel Designer Hardware**
Designer Howard Miller Clock *
Premium Residential Carpet **

3/8" 6 lb. Rebond Carpet Padding **
Overhead Cabinets with Mini Stutz & Top Mount
Hinges in Sofa Slideout

Cabinetry & Countertops

Premium Formica Textured Countertops
Wood-Edged Countertops *
Solid Ash & Stained Cabinet Stiles & Drawer Fronts**
Solid Ash Raised Panel Cabinet Doors
7 Ply Residential Grade Plywood Drawer Construction
Metal Drawer Glides & *Teflon* Rollers
Ball-bearing Drawer Catch
Brushed Nickel Hardware
Glass Inserts with Solid Ash Frames Above Sofa

Window Treatments

Day/Night Shades **
Mini-Blinds (at Kitchen Sink Window)
Designer Hard Valance
Designer Hard-Sided Lambrequins For Privacy

Entertainment Systems

5:1 Home Theater System with Remote **
Satellite Prep *
Cable Jack
TV Antenna with Power Booster
Bedroom TV Prep
Optional: LCD TV in Main Living Area

Furniture & Appliances

Jack-Knife Sofa
Two Residential-Size Rockers (30RL-DSL-BS)
Booth Dinette
8 cu.ft. Double Door Refrigerator **
Solid Ash, Raised Panel Refrigerator Inserts **
Over-the-Range Microwave, 1.3 cu. Ft. **
Integrated Exhaust Fan (with Microwave)
Amana 3-Burner Stovetop
Range Cover - 2 Piece Metal *
Water Purifier *
Interior Utility Center
Optional: End Table with Lamp (30RL-DSL-BS)
Optional: 10 cu.ft. Refrigerator
Optional: Hide-A-Bed Sofa
Optional: 2 "Zero Wall" Recliners (30RL-DSL-BS)
Optional: Minimal Carpet Installation
Optional: Free-Standing Table with 4 Chairs
(Chairs with Below-Seat Storage)

Galley Area

Armstrong Linoleum with "Tough Guard"
Metal J-Faucet *
Extra Large, Dual Basin Sink with Covers

Bath Area

2-Piece Marbled Neo-Angle Shower Enclosure *
Rain-Glass Shower Walls & Door
Brushed Nickel Shower Hardware and Wand
Large Medicine Cabinet with Vanity Lights & Mirror
Fiberglass Vanity Sink
Residential-Style Brushed Nickel (Metal) Vanity Faucet
Residential, Six-Panel Lavatory Doors
Porcelain Bowl Thetford Toilet
Power Roof Vent
Toilet Tissue Holder
Brushed Nickel Bathroom Accessories
Towel Hooks & Bar

Bedroom Area

Bedroom Slide (NA 26FB-DSL)
Solid Hardwood, Stained Slide Fascia (BS Models)
TV Prep
Egress Window
Premium Bedsread Package & Window Coverings
Below Bed Storage

Front Wardrobe Ensemble (BS Models)
Sliding Mirrored Doors with Hanging Storage
Swivel TV Frame & Drawer Bank

Safety Features

Fire Extinguisher
Dead Bolt Locks on Entry Doors
120v GFI Protected Exterior Receptacle
LP Gas Detector
Smoke Detectors
Egress Window
Safety Glass
10" Deep Entry Step *
Entry Step Light
Patio Light *
XL Folding Entry-Assist Handle *
Solid Wood Exit Handle
Front, Rear & Side Amber Road Lights

* *Colorado Convenience Package*

** *Colorado Premiere Package*

Features not found on the competition

Colorado Decor Choices



Barcelona Rust



Fusion Sage



Graphic Opal



Raine Blue

www.colorado-rv.com

2164 Caragana Court • Goshen, IN 46526
Sales: 574-534-1224 • Fax: 574-975-0601
Parts, Service & Warranty: 574-537-0700

YOUR LOCAL DEALER

Limited Warranty

- Two year structural and appliance
- One year hitch to bumper
- See owners manual for more information

Vehicle loading - Every effort has been made to provide the greatest number of options for the recreational vehicle owner. Along with these choices comes the responsibility to manage the loads that are imposed by the choices that they remain within the manufacturer's specified chassis weight limits. Do not overload the recreational vehicle.

Some optional equipment not included. Net carrying capacity (NCC) is determined by subtracting unloaded vehicle weight (UVW) from gross vehicle weight (GVWR) and includes fluids, options and cargo. Liquid capacities and weights are approximations only. Warning - This information is intended as a guide only. Weights of individual vehicles may vary. Consult your owner's manual for complete loading, weighing and towing instructions. *UVW and Hitch Dry Weight are base weights of units without options. Each unit includes a weight label which lists specific weight information for that unit.

Product information, specifications, and photography in this brochure were as accurate as possible at time of printing. Photographs may contain some features that are optional on your vehicle. Since we continually strive to improve our products, actual products may differ. Prices and specifications are subject to change without notice. All capacities are approximate and dimensions are nominal. Some features or options may be different or unavailable in Canada. Vehicles are designed for recreational use only and not intended for use as a primary residence. All product brand names used in this brochure are registered trademarks of Thor Industries Inc. Unauthorized use of trademarks is prohibited by law.

©2007 Thor Industries, Inc.

rev1.CTT10/07