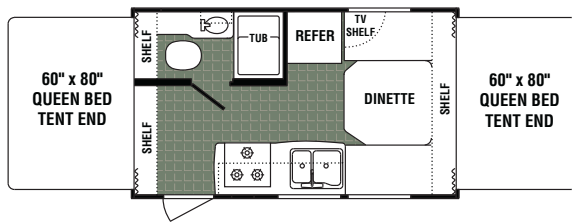


AEROLITE CLASSIC EDITION

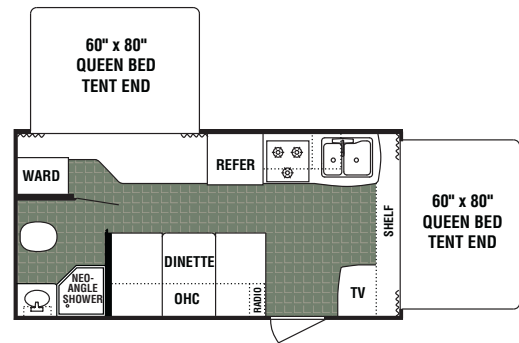


■ FLOOR PLANS ■

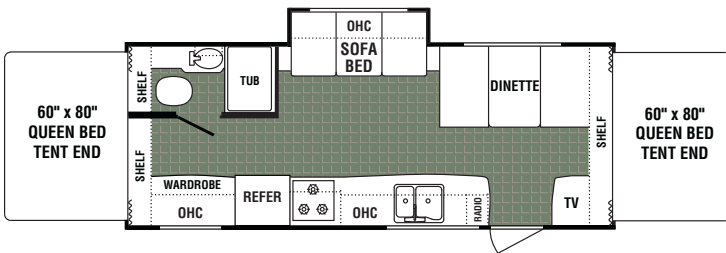
160CE



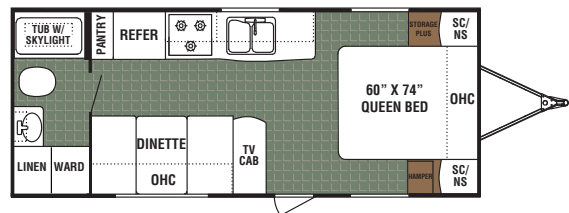
180CE



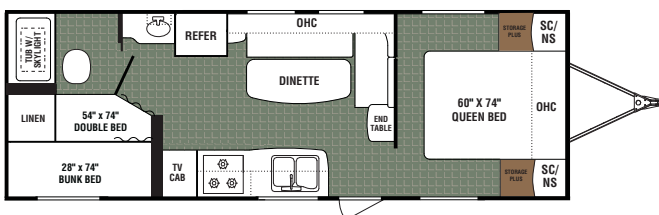
236CE



19FLCE



27BHCE



AEROLITE

STANDARD FEATURES AND OPTIONS

STANDARD EXTERIOR FEATURES

- Two 20 lb LP bottles
- Four corner stabilizer jacks with sand pads
- Self-supporting bunk ends with futon mattress
- Key-locking "Easy Latch" tent doors
- 60" x 80" queen beds in tents
- 26" Radius corner entry door
- ABS wheel wells
- Leaf spring suspension
- 6-Way welded aluminum laminated superstructure (roof, floor and walls)
- Lightweight I-beam frame with E-coat finish
- ABS fender skirts
- EPDM one-piece seamless rubber roof
- Rain gutter with corner downspouts
- Double entry step
- Radius corner, clamp ring safety glass windows
- Entry-assist handle at door
- Break-away trailer switch
- 120V Exterior outlet

STANDARD INTERIOR FEATURES

- Bathroom medicine cabinet
- Shower curtain
- Mini blinds throughout
- 30 Amp power cord with storage compartment
- 12V interior lights with wall switch in bath
- Fire extinguisher
- Carbon monoxide, smoke & LP detectors
- Gas/electric refrigerator
- Three burner range
- Range hood with 12V light and exhaust fan
- Solid state converter with built-in battery charger
- Systems monitor panel
- Demand water pump

OPTIONAL FEATURES

- 13.5 BTU air conditioning
- AM/FM/CD stereo with 2 speakers
- Microwave
- TV antenna
- Awning
- Bunk end lights and fan
- Double door refrigerator
- Spare tire
- Skylight in bath



| Weights & Specifications | 160CE | 180CE | 236CE | 19FLCE | 27BHCE |
|---|------------|------------|------------|------------|------------|
| Axle Weight* | 2171 lbs. | 2570 lbs. | 3413 lbs. | 3464 lbs. | 3185 lbs. |
| Dry Hitch Weight* | 285 lbs. | 385 lbs. | 315 lbs. | 310 lbs. | 451 lbs. |
| Unloaded Vehicle Weight* | 2456 lbs. | 2955 lbs. | 3728 lbs. | 3773 lbs. | 3637 lbs. |
| GVWR | 3750 lbs. | 5000 lbs. | 5000 lbs. | 6000 lbs. | 6600 lbs. |
| Net Cargo Capacity | 1294 lbs. | 2045 lbs. | 1272 lbs. | 2227 lbs. | 2964 lbs. |
| Exterior Length | 17'6" | 17'6" | 24'4" | 24'4" | 28' |
| Exterior Height** | 9'8" | 9'8" | 9'8" | 9'8" | 9'8" |
| Exterior Width | 7'6" | 7'6" | 7'6" | 8' | 8' |
| Fresh Water Tanks | 38 gallons | 38 gallons | 38 gallons | 38 gallons | 38 gallons |
| Grey Water Tanks | 39 gallons | 39 gallons | 39 gallons | 39 gallons | 39 gallons |
| Black Water Tanks | 22 gallons | 22 gallons | 22 gallons | 28 gallons | 28 gallons |
| Furnace Size (BTU's) | 18,000 | 18,000 | 18,000 | 19,000 | 18,000 |
| Tire Size (all models): ST205/75D14(C) Interior Height (all models): 6'4" | | | | | |

AEROLITE

A Division of Dutchmen Manufacturing, Inc.
 2164 Caragana Court ▪ Goshen, Indiana 46526
 Ph. 574.534.1224 ▪ Fax 574.975.0556

YOUR LOCAL DEALER

*Axle weight, dry hitch weight and unloaded vehicle weight (UVW) are base weights of units without options. Each unit includes a weight label which lists specific weight information for that unit. **Exterior height includes AC. Vehicle Loading – Every effort has been made to provide the greatest number of options for the recreation vehicle owner. Along with these choices comes the responsibility to manage the loads that are imposed by the choices so that they remain within the manufacturer's specified chassis weight limits. Do not overload the recreation vehicle. Net carrying capacity (NCC) determined by subtracting unloaded vehicle weight (UVW) from gross vehicle weight (GVWR) and includes fluids, options and cargo. Liquid capacities and weights are approximations only. Warning: This information is intended as a guide only. Weights of individual vehicles may vary. Consult your owner's manual for complete loading, weighing and towing instructions.

Product information, specifications, and photography in this brochure were as accurate as possible at time of printing. Photographs may contain some features that are optional on your vehicle. Since we continually strive to improve our products, actual products may differ. Prices and specifications are subject to change without notice. All capacities are approximate and dimensions are nominal. Some features shown are optional and may be different or unavailable in Canada. Vehicles are designed for recreational use only and not intended for use as a primary residence. All product brand names used in this brochure are registered trademarks of Thor Industries, Inc. Unauthorized use of trademarks is prohibited by law.



1 YEAR BUMPER TO HITCH LIMITED WARRANTY

*See owner's manual for complete warranty details.

ACErev1.5/08
 ©Thor Industries, Inc.