

# THE ORIGINAL ULTRA-LITE TRAILER



## 2009

Since 1996, Aerolite has been the most recognized ultra-lite brand name in North America. As the original and innovator of ultra-lite technology in North America, we continue to introduce to new products, features, options and floorplans to the industry designed especially for SUV, light trucks and now car platform cross-over vehicle owners.

We are focused on creating innovative products exclusively for the ultra-lite market. Our products are loaded with standard equipment and industry-leading features. Plus, our attention to detail in design, construction and service after the sale is why our customers return when it is time for their next recreation vehicle.

If you are considering an ultra-lite, make sure you are choosing the best. Make sure you choose Aerolite. The original and still the best ultra-lite in North America.

### KEY STANDARD FEATURES

Aerodynamic Ultra-Lite design for better fuel economy!

6 Way welded aluminum cage Ultra-Lite construction

6 Way lamination - walls, floor and roof

Enclosed underbelly

Radius corner safety glass windows standard

Flush mount, radius-corner baggage doors

Diamond plate front rock guard

EPDM one piece seamless rubber roof

Dual battery racks

Dual 30 lb. LP tanks

Aluminum dinette construction - saves weight

Real solid wood kitchen drawers with residential drawer glides

Stainless steel sinks with high rise faucet

Standard exterior shower with hot and cold water

Nitrogen filled radial tires

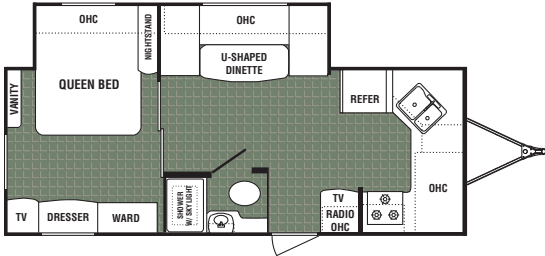
Acu-Weight System - every unit is weighed as it leaves the factory - Real Weights!



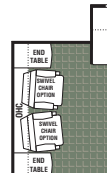
# NEW & UPDATED FLOORPLANS



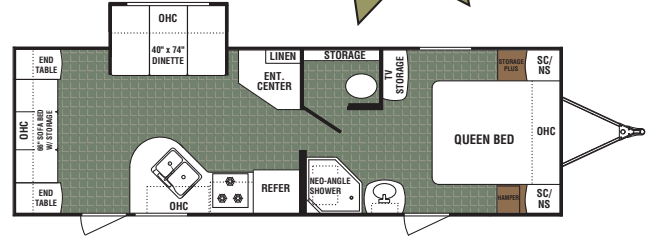
22FKS-DS



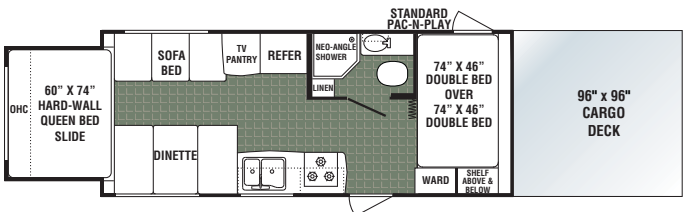
27CD-SL



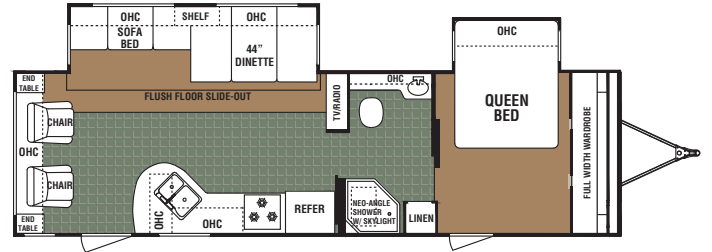
Optional Twin  
Rocker Recliners



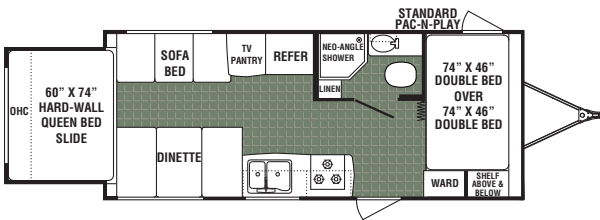
21QS with Cargo Deck Option



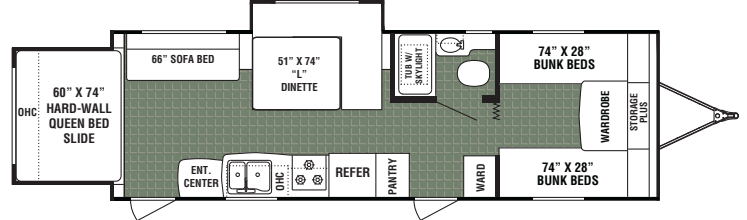
31RL-DSL



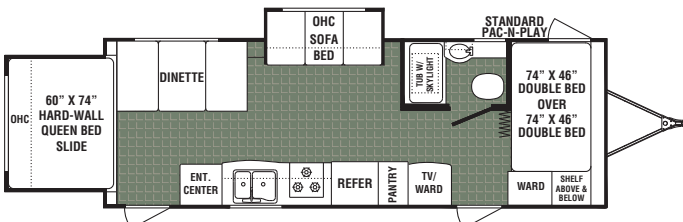
## BEST-SELLING AEROLITE "QS" FLOORPLANS



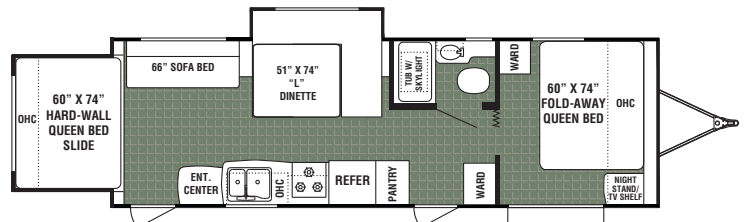
21QS



27QSBH-SL



25QS



27QSTH-SL

RAMP  
DOOR

## DECOR CHOICES



TOMMY GREEN



CARAMEL APPLE



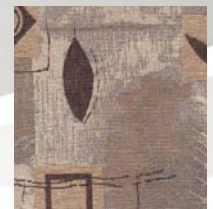
PEARL GREY



GLACIER BLUE

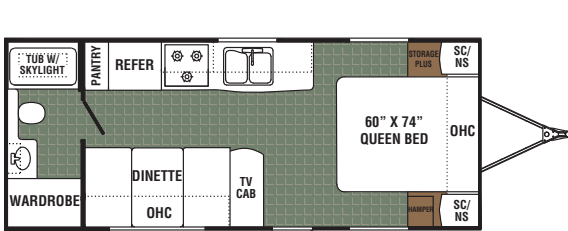


NICKEL

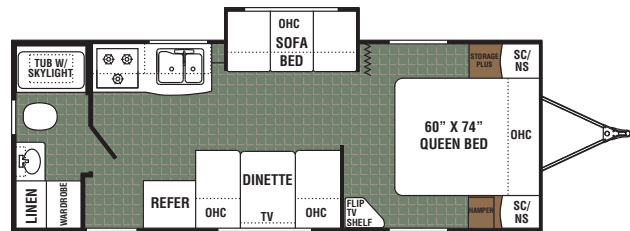


VANILLA MOCHA

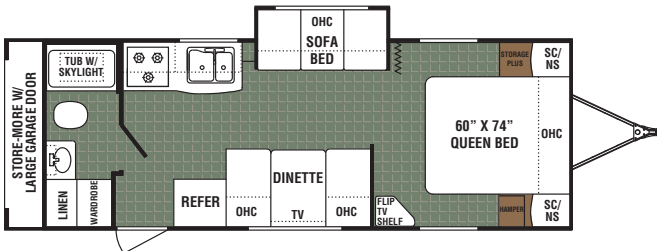
# BEST-SELLING AEROLITE FLOORPLANS



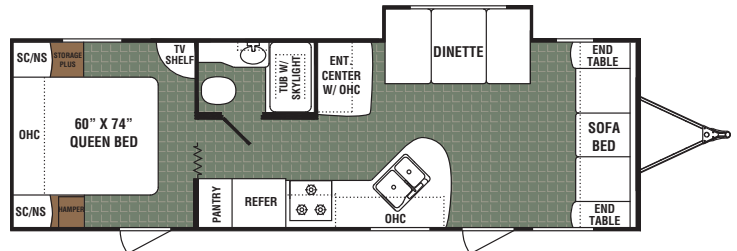
19FL



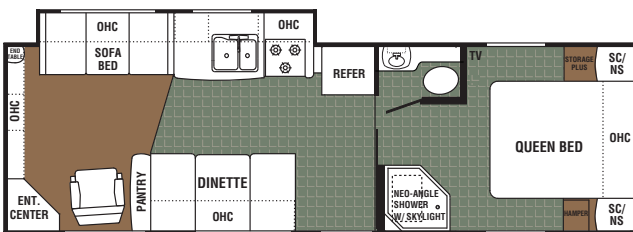
24RB-SL



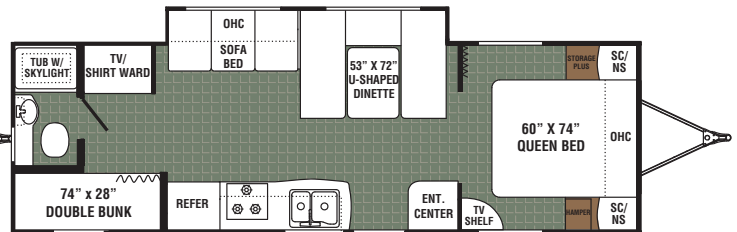
24RB-SL with Garage Option



27RB-SL Optional two chairs in place of front sofa

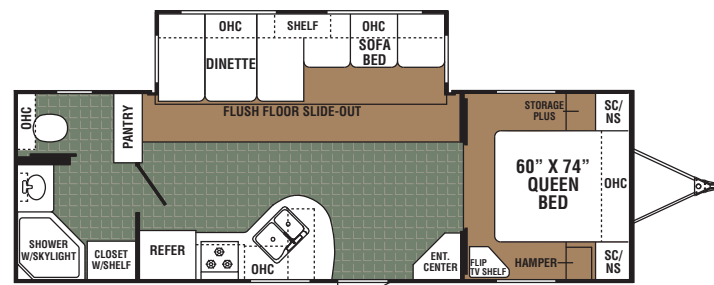


29RLK--SL

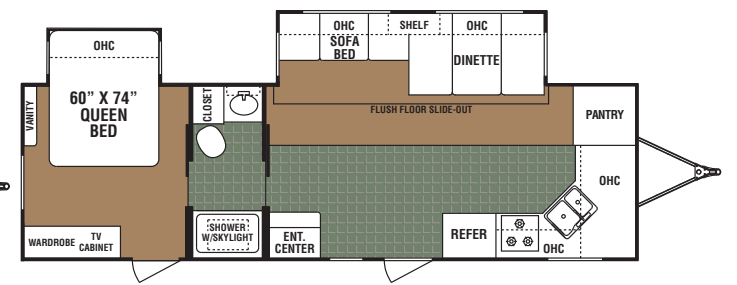


30BH-SL

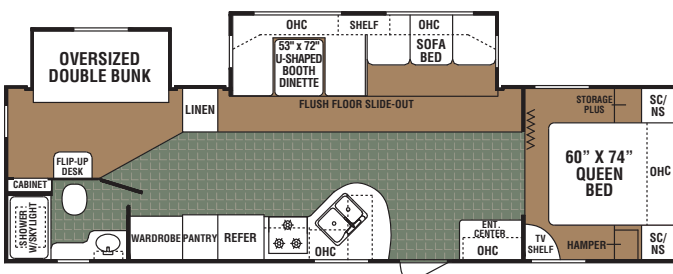
## NOW PART OF THE AEROLITE BRAND - BEST-SELLING ADIRONDACK FLOORPLANS



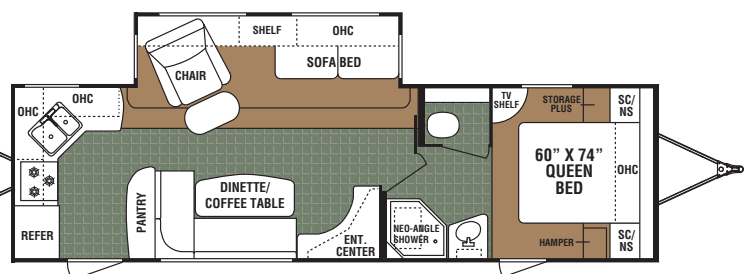
27FB-DSL



27FK-DSL-BS



31BH-DSL



31RK-DSL



# WHAT'S NEW FOR 2009

## Exterior Changes

- New design - interior ceiling height increases by 2"
- New ultra-lite 8" steel I-beam chassis
- New Equa-Flex suspension system
- 2 5/16" coupler
- New colored skirt metal
- New 4" square bumper with sewer hose storage - Bike rack ready
- New bumper mount spare carrier
- New Thule "Smart RV" TV mounts on exterior of coach – includes duplex 110volt outlet and RG6 satellite ready cable jack – mounted at eye level for picnic table use

## Interior Changes

- New Neo-angle showers replaces tubs in most models - Increases shower room
- New 38" deep slide room design (most models)
- Full size free standing dinette now available
- New interior designer decors with upgraded fabrics and appointments
- New Thule "Smart RV" TV mounts

## New Options

- Larger LCD HD TV option - 15", 19" and 23" now available (see floorplans)
- A&E electric awning (most models)
- Carefree carpet

## New Entertainment Package

- Includes AM/FM/CD/DVD with surround sound system and LCD TV

## NEW ELITE PACK

- Available on: 27FB-DSL, 27FK-DSL-BS, 31BH-DSL, 31RK-DSL, 31RL-DSL
- Hide-a-Bed sofa
- Large double door refrigerator
- Entry assist handle
- Deluxe lighting package
- Wall clock
- Decorator wall border
- Dark tint windows
- Night shades
- Raised panel refrigerator insert

## WEIGHTS & SPECIFICATIONS

	19FL	22FKS-DS	24RB-SL	24RB-SL Opt.	27CD-SL	27RB-SL	29RLK-SL	30BH-SL	21QS	21QS THV	25QS	27QSBH	27QSTH	27FB-DSL	27FK-DSL-BS	31BH-DSL	31RK-DSL	31RL-DSL
*Axle Weight	3555	4297	4136	4356	4286	4234	4444	4319	3732	4375	4224			5203	5573	5738	5567	6169
*Dry Hitch Weight	397	726	414	263	448	549	653	485	515	639	384			501	626	723	701	571
*Unloaded Vehicle Weight	3952	5023	4550	4619	4734	4783	5097	4804	4247	5014	4608			5704	6199	6461	6268	6740
Net Cargo Capacity	1448	977	1450	1381	1266	1217	903	1196	1153	2686	1392			1796	1301	1039	2132	1660
Exterior Length	24'1"	26'2"	26'4"	28'8"	30'4"	30'4"	30'11"	30'4"	24'5"	33'4"	27'1"	30'4"	30'4"	30'4"	32'4"	35'5"	33'9"	33'9"
Exterior Height w/A/C	10'5"	10'5"	10'5"	10'5"	10'5"	10'5"	10'5"	10'5"	10'5"	10'5"	10'5"	10'5"	10'5"	10'8"	10'8"	10'8"	10'8"	10'8"
Exterior Width	8'	8'	8'	8'	8'	8'	8'	8'	8'	8'	8'	8'	8'	8'	8'	8'	8'	8'
Fresh Water Tanks	38	38	38	38	38	38	38	38	38	39	38	38	38	46	46	46	46	46
Gray Water Tanks	39	39/39	39	39	39	28	39	39	39	39	39	39	39	39	39/39	39	39/39	39
Black Water Tanks	28	22	28	28	34	34	34	22	22	22	22	22	22	34	34	34	34	34
Furnace Size (BTUs)	19,000	19,000	19,000	19,000	30,000	30,000	30,000	30,000	19,000	19,000	30,000	30,000	30,000	30,000	30,000	30,000	30,000	30,000
Tire Size	■	■	■	■	■	■	■	■	■	■	■	■	■	●	●	●	●	○

■ = Tire Size ST205/75D14(C) ● = Tire Size ST205/75R15(C) ○ = Tire Size ST225/75R15(D)

**www.Aero-RV.com**

Dutchmen Manufacturing, Inc. 2164 Caragana Court Goshen, Indiana 46526 Ph. 574-534-1224