

DENALI

TRAVEL TRAILERS & FIFTH WHEELS

Featuring The All New
Super-Lite Series

DENALI

TRAVEL TRAILERS & FIFTH WHEELS



LET YOUR JOURNEY BEGIN!

REFRESHING STYLE. UNRIVALED FEATURES. YOUR BEST VALUE.

The native people of the great Alaskan wilderness call the massive peak of Mount McKinley "Denali". Translated, Denali means "Great One".

Denali is also the name of the immense national park and nature preserve containing Mt. McKinley. At 6,000,000 acres, Denali National Park exemplifies Alaska's character as one of the world's last great frontiers for wilderness and adventure. It remains an untouched terrain of wildlife and glaciated mountains.

The grandeur and beauty of Denali National Park has inspired Denali laminated travel trailers and fifth wheels. Denali will captivate your senses and deliver first-class features and comfort with unprecedented value.

Super-Lite 292RKX-DSL in Nirvelli Chestnut



INTRODUCING DENALI SUPER-LITE
TRAVEL TRAILERS & FIFTH WHEELS

SEE PAGE 5



LET YOUR JOURNEY BEGIN.

28RLBS-M5 in Nirvelli Chestnut

Distinctive style and premium features make Denali stand out from the crowd. Featuring premium residential furniture, large picture windows with designer valances and fabric night shades, Denali sets the new standard in laminated Travel Trailers and Fifth Wheels. Plus, all slideout rooms feature designer lighting, a premium slide fascia, large overhead storage cabinets and a deluxe sofa bed with air mattress.

DENALI





Kitchen Features

Denali's kitchen is loaded with standard features that are usually found as upgrades on our competitors' products. A large double door refrigerator, large microwave, high-gloss countertops with a recessed double bowl sink with high-rise faucet, raised panel solid wood cabinet doors with oil-rubbed bronze hardware and over-sized drawers on residential steel roller drawer glides make Denali your best choice for premium features and unprecedented value.

28RLBS-M5 in Nirvelli Chestnut

Bedroom Features

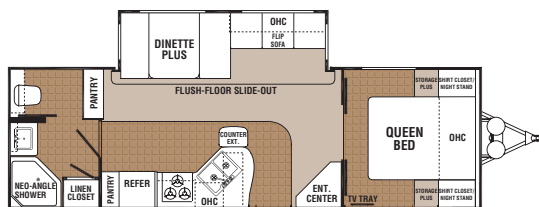
Denali fifth wheels include a standard queen bed, large front closet with mirrored doors, corner sink with medicine cabinet, a residential chest of drawers and a swing-out TV shelf in the bedroom.

All Denali bedrooms include a designer master suite package with pillows, shams, a bedspread and matching valances.

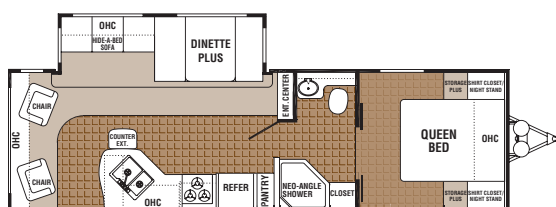


DENALI SUPER-LITE TRAVEL TRAILERS & FIFTH WHEELS

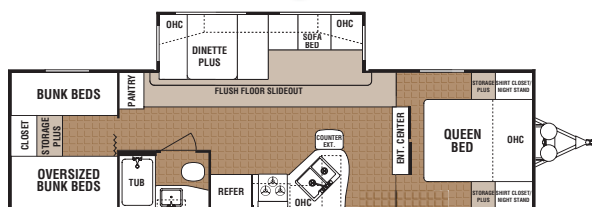
Introducing the new Denali Super-Lite travel trailer and fifth wheel product line. Denali Super-Lites feature a 6-way welded aluminum cage superstructure with lightweight laminated floor and walls. Denali Super-Lites include the top premium features of our traditional Denali product line while saving weight and increasing your fuel economy. Denali Super-Lites are up to 800 pounds lighter than competitive models! Denali Super-Lite - The leader in lightweight, high feature content products!



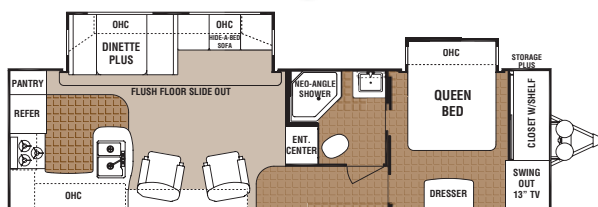
260FBX-DSL
1/2 TON TOWABLE



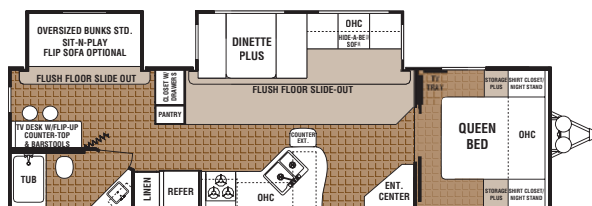
270RLX-DSL
1/2 TON TOWABLE



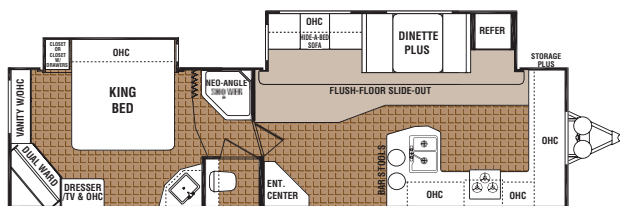
290BHX-DSL
1/2 TON TOWABLE



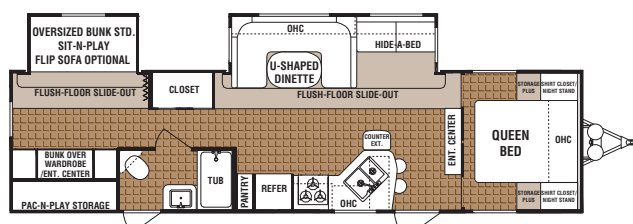
292RKX-DSL
1/2 TON TOWABLE



300BHX-DSL



310FGX-DSL



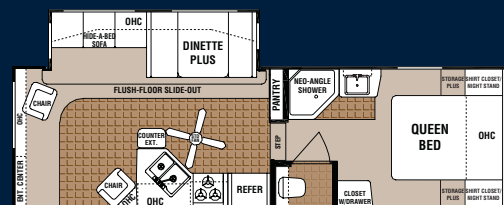
312BHX-DSL

On the cover: Denali Super-Lite's 292RKX-DSL & 259REX-M5

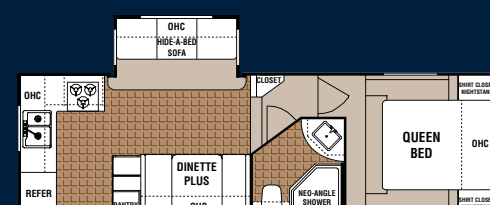
SUPER-LITE FEATURES

- 6-Way Welded Aluminum Construction (Walls, Floor & Roof)
- Laminated Walls & Floor
- 8" I-Beam (Won't Lose Camber)
- 15" Radial Nitrogen-Filled Tires
- Full Walk-On Roof with EPDM Rubber Membrane
- Weather Guard Premium Protection Package
 - R14 Fiberglass Ceiling Insulation
 - Heated & Enclosed Underbelly
 - Heated & Enclosed Dump Valves
- 40" Deep Living Room Slide Rooms
- Ducted Heat & AC
- Solid Wood Cabinet Doors & Drawers
- Premium Sofa Bed with Air Mattress
- Large Galleys with Premium Appliances
- Skylight in Bath
- Black Trim, Dark Tinted Safety Glass Windows
- Fabric Night Shades
- LCD HD TV
- Oversized Exterior Pass Through "Storage Plus" Compartments
- Dry Camping Features
 - AM/FM/CD/DVD
 - 12 Volt Lights in Slide Room
 - Large Holding Tanks

SUPER-LITE FIFTH WHEELS



259REX-M5
1/2 TON TOWABLE



260RKX-M5
1/2 TON TOWABLE

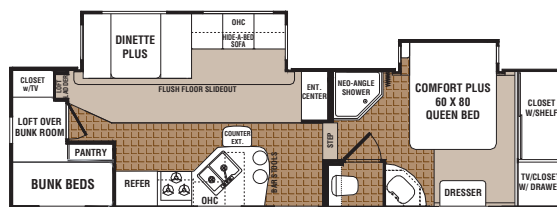
DENALI FIFTH WHEELS

FEATURING STANDARD
BED SLIDES & PRIVATE
BATHROOMS!

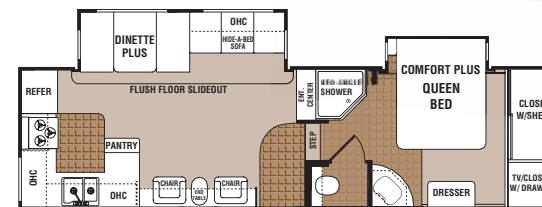
DENALI FIFTH WHEELS INDUSTRY-LEADING STANDARD FEATURES

- 17.8 Gallon per Hour Gas/Electric Water Heater with DSI
- Premium Jensen Entertainment System
- 32" LCD HD TV
- Full Walk-On Roof with EPDM Rubber Membrane
- Weather Guard Protection Package
- Solid Wood Cabinet Doors & Drawers
- Quick Release Snap Jacks (Fifth Wheels)
- Easy Lube Hubs
- Dark Tint Safety Glass Windows
- Fabric Night Shades
- Premium Hide-a-Bed Sofa with Air Bed
- Countertop Extension & Residential Drawer Glides
- 12 Volt Dry Camping Compatible
- Skylight in Shower
- Front Cap with Built-In Area Lights
- Nitrogen-Filled Tires

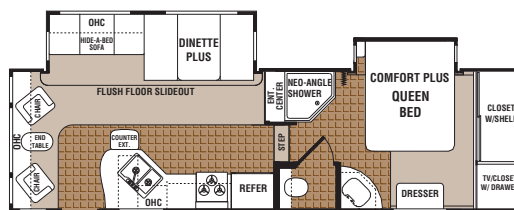
WHAT DOES THE
COMPETITION OFFER?



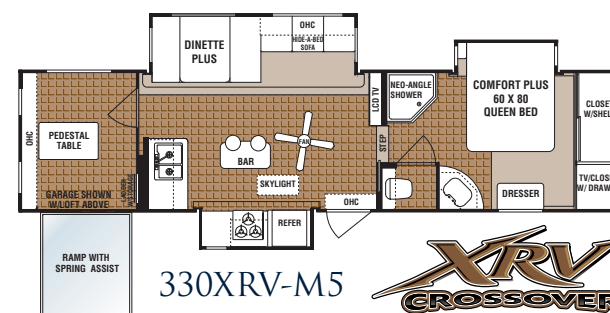
28LBBS-M5



28RKBS-M5



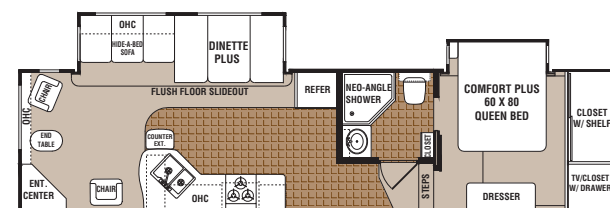
28RLBS-M5



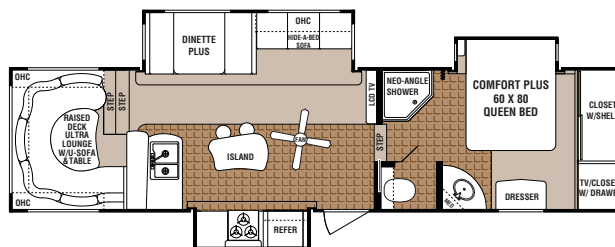
330XRV-M5



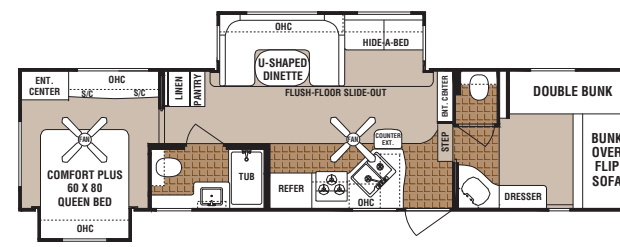
31RGS-M5



31SBBS-M5



331RS-M5



326QB-M5

PREMIUM CONSTRUCTION HIGHLIGHTS

- 2" Thick, aluminum-framed, laminated, gel-coated fiberglass walls
- Fully decked 3/8" walk-on roof with rubber membrane
- 5" Tapered truss-style roof rafters with R14 insulation (Aluminum rafters in Super-Lites)
- Cambered steel I-beam frame with outriggers
- Fold-away steps welded to frame
- 3" Thick floor structure with one-piece 5/8" tongue-and-groove, exterior-grade floor decking
- Aluminum-framed, fully laminated floor structure on Super-Lites
- Weather Guard Premium Protection Package (R14 roof & floors, R9 sidewalls)
- Dark-tint, radius corner, safety glass windows
- Ultra-lube hubs on Nitrogen-filled tires - grease zerk make wheel bearings easy to lube
- Front fiberglass cap with integrated security lights (Fifth Wheels)



PREMIUM PROTECTION WEATHER GUARD PACKAGE

ACU-WEIGHT CERTIFICATION



All units are
weighed at
the factory -
Real Weights!

Denali features the standard Weather Guard Premium Protection Package. It includes an enclosed and heated underbelly, and enclosed tanks and knife valves. Plus, two layers of insulation in the roof structure! (R14 Roof & floor, R9 walls)

WEIGHTS & SPECIFICATIONS

	Floorplan	Base Weight	Hitch Dry Weight	Cargo Capacity	Exterior Length	Exterior Height w/AC	Fresh Water Capacity (Gal.)	Grey Water Capacity (Gal.)	Black Water Capacity (Gal.)	Furnace Size (BTU's)
Super-Lite Travel Trailers	* 260FBX-DSL	6133	805	1857	29' 9"	10' 11"	46	42	42	30,000
	* 270RLX-DSL	7035	852	2645	31' 2"	10' 11"	46	42	42	30,000
	* 290BHX-DSL	6729	1016	2671	32' 7"	10' 11"	46	42	42	30,000
	* 292RKX-DSL	7337	950	2063	34' 1"	10' 11"	46	42/42	42	30,000
	300BHX-DSL	7523	961	1877	33' 11"	10' 11"	46	42/42	42	30,000
	310FGX-DSL	7532	1139	1868	34' 11"	10' 11"	46	42/42	42	30,000
	312BHX-DSL	7652	1126	1748	35' 7"	10' 11"	46	42/42	42	30,000
Super-Lite Fifth Wheel	* 259REX-M5	7056	1362	3505	28' 6"	11' 4"	46	42	42	30,000
	* 260RKX-M5*	7100*	1350*	3460*	28'	11' 4"	46	42	42	30,000
Denali Fifth Wheels	28LBBS-M5	8654	1840	1906	33' 6"	12' 6"	46	42/42	42	34,000
	28RKBS-M5	8237	1618	2323	32' 7"	12' 6"	46	42/42	42	34,000
	28RLBS-M5	8151	1709	2409	31' 2"	12' 6"	46	42/42	42	34,000
	31RGBS-M5	9255	1752	2937	34' 7"	12' 6"	46	42/42	42	34,000
	31SBS-M5	8835	2094	3357	35' 2"	12' 6"	46	42/42	42	34,000
	326QB-M5	9216	2040	2976	36'	12' 6"	46	42/42	42	34,000
	330XRV-M5	10,043	2221	3357	35' 8"	13' 2"	46	42/42	42	34,000
	331RS-M5	9810	2200	2382	35' 7"	13' 2"	46	42/42	42	34,000
* Half-Ton Towable		*260RKX-M5 weights estimated								

*Consult your vehicle owner's manual for maximum towing capacity before purchasing a recreation vehicle. Vehicle loading - Every effort has been made to provide the greatest number of options for the recreational vehicle owner. Along with these choices comes the responsibility to manage the loads that are imposed by the choices that they remain within the manufacturer's specified chassis weight limits. Do not overload the recreational vehicle. Dry weight is the weight of the unit with standard run features. Some optional equipment not included. Net carrying capacity (NCC) is determined by subtracting unloaded vehicle weight (UVW) from gross vehicle weight (GVWR) and includes fluids, options and cargo. Liquid capacities and weights are approximations only. Warning - This information is intended as a guide only. Weights of individual vehicles may vary. Consult your owner's manual for complete loading, weighing and towing instructions. Vehicles are designed for recreational use only and not intended for use as a primary residence.

DECOR CHOICES



JEMBARAN NAVY



NIRVELLI CHESTNUT



YAHTZEE MAHOGANY



YALENA RAISIN

DENALI STANDARD & OPTIONAL FEATURES

EXTERIOR FEATURES

- Laminated Aluminum Framed Fiberglass Sidewalls
- Welded Aluminum, Fully Laminated Floor Structure with Ducted Heat (Super-Lite Series)
- 4" Thick Floor Structure with Fiberglass Insulation and Ducted Heat (FW)
- Welded Aluminum Framed Roof Trusses with Fiberglass Insulation (Super-Lite Series)
- Truss-Style Roof Structure with Fiberglass Insulation (FW)
- Walk-On Roof with One-Piece Seamless Rubber
- Extreme Insulation Package with R14 Roof Insulation and Heated Enclosed Underbelly
- Heated and Enclosed Dump Valves
- 8" Lightweight I-Beam, High Strength Steel Chassis
- Front Fiberglass Cap with Area and Security Lights (FW)
- Aluminum Diamond Plate Rock Guard (TT)
- Electric Front Jacks with Rear Stabilizer Jacks (FW)
- Quick Release Snap Jacks (FW)
- Front/Rear Stabilizer Jacks (TT)
- Hitch Light
- Exterior Storage Light
- Outside Shower
- Ultra Lube Hubs On Axles
- Extra Dark Tint, Sliding Safety Glass Windows with Black Frames
- Windows on Sides of Living Room Slide
- 30" Wide Radius Corner Entry Door
- Extra Large Exterior Entry-Assist Handle and Interior Handle
- 12 Volt Electric Slideout Mechanism with Manual Override
- Triple-Sealed Slide Out System
- Large Pass-Through Storage Compartments - See Floorplans
- Large Patio Awning
- Detachable 30 Amp Power Cord
- Cable and Satellite Hook-Ups
- 30 lb. LP Bottles with "Easy-Access" Panel On Cover (TT)
- 30 lb. LP Bottles (FW)
- San-T-Flush Black Tank Flush
- ST225/75R15(D) Nitrogen-Filled Tires
- Spare Tire

INTERIOR FEATURES

- Solid Wood Cabinet Doors & Drawers
- Rocker Chairs - See Floorplans
- Pleated Night Shades
- Solid Lambrequin Leg Window Treatments
- Oil Rubbed Bronze Cabinet Hardware
- Premium Hide-a-Bed Sofa with Air Mattress

- End Table Between Chairs (Where Available on FW; NA Super-Lite Series)
- The "Great One" Framed Picture
- Designer Wall Border
- 6' 7" Living Area Slide Room Height (FW)
- 6' 2" Living Area Slide Room Height (Super-Lite Series)
- 12 Volt Lights in Slide-Outs
- Sconce Light on Wall (Most Models)
- Decorative Throw Pillows
- Hinged Dinette Seats with Storage Below
- Phone Jack/Data Port
- Comfort Plus Queen Size Innerspring Bed
- Designer Bedspread and Headboard
- Laundry Chute (Most Models)
- Designed for Dry Camping - 12 Volt Compatible

PREMIUM APPLIANCES

- 34,000 BTU Hydro Flame Forced Air, DSI Furnace with Wall Thermostat (FW)
- 30,000 BTU Hydro Flame Forced Air, DSI Furnace With Wall Thermostat (Super-Lite Series)
- 17.8 Gallons Per Hour Quick Recovery Gas/Electric DSI Water Heater
- Water Heater Bypass
- 13.5 BTU Ducted Air Conditioner with Insulated, Foil-Wrapped, Lightweight Ducts
- TV Antenna with Power Booster
- LCD TV With Adjustable Bracket
- Premium Jensen Entertainment System AM/FM/CD/DVD System with 12 Volt Compatible Zone Switch & MP3/iPod Player Hook-Up On Stereo
- 4 Interior and 2 Weatherproof Exterior Speakers
- 65 Amp Converter with Battery Charger
- Monitor Panel
- Smoke/LP Detector
- Carbon Monoxide Detector

GALLEY FEATURES

- Range Hood with 12 Volt Light and Exhaust Fan
- Residential Steel Roller Drawer Guides
- Premium High-Rise Galley Faucet
- Deep Double-Bowl, Under Mount Sink with Cutting Board Sink Cover
- Large Microwave Oven with Turn Plate
- 3 Burner Auto Ignition Range and Oven with Range Cover
- Large Double Door Refrigerator with Black Glass Front (Super-Lite Series)
- Large Double Door Refrigerator with Solid Wood Front (FW)
- Countertop Extension (Where Possible)
- Oversized Pots and Pans Drawers (Where Possible)
- Large Kitchen Pantry (Where Possible)
- Trash Can Storage Area in Every Galley

BATHROOM FEATURES

- Residential Porcelain Toilet with Foot Pedal
- Power Roof Vent
- Skylight Over Shower
- Residential Shower/Tub Surround
- Residential Neo-Angle Shower with Glass Shower Door (Most Floorplans)
- Extra Large Medicine Cabinet with Mirror

OPTIONS

- 15,000 BTU AC in Place of Standard 13,500 BTU
- Free-Standing Dinette Table with 4 Chairs
- Cold Weather Flooring Upgrade
- Thule SmartRV Package
- Aluminum Rims (NA Super-Lite Series)
- Rear Ladder (NA Super-Lite Series)
- Fantastic Fan (NA Super-Lite Series)
- Fireplace with 50 Amp Service (31SBBS-M5)
- 2 Recliners in Place of Rockers (Where Available; NA Super-Lite Series)
- Equa Flex Suspension (NA Super-Lite Series)
- Hitch Helper Hitch Pin Cover (NA Super-Lite Series)
- Prep for Second AC with 50 Amp Service (NA Super-Lite Series)

OPTIONAL LUXURY CAMPING PACKAGE

- Power Stabilizer Jacks
- Equa Flex Suspension
- Chrome Bumper Cover
- Deluxe Entry Assist Handle
- Aluminum Rims
- Central Vacuum System
- Convection Microwave
- Pillowtop Mattress
- 8 Cu. Ft. Refrigerator
- 19.7 Gallon per Hour Gas/Electric Water Heater with DSI
- Hitch Helper System
- Thule Smart RV System

Some features may be part of an option package - see dealer for details

Visit us on the web for
**MORE PHOTOS, NEW FLOORPLANS,
WARRANTY INFORMATION & MORE!**

www.DENALI-RV.com



Dutchmen Manufacturing, Inc.
A division of Thor Industries

2164 Caragana Court · Goshen, IN 46526
Sales: 574.534.1224 · Fax: 574.975.0626

YOUR LOCAL DEALER

Go RVing

RVIA

THOR
INDUSTRIES, INC.



ONE YEAR LIMITED WARRANTY
See Owner's Manual For Details

Product information, specifications, and photography in this brochure were as accurate as possible at time of printing. Photographs may contain some features that are optional on your vehicle. Since we continually strive to improve our products, actual products may differ. Prices and specifications are subject to change without notice. All capacities are approximate and dimensions are nominal. Some features shown are optional and may be different or unavailable in Canada. All logos and brand names shown in this brochure are registered trademarks of Dutchmen Mfg. Inc.

rev1DN2.09

©2009 Thor Industries, Inc.