

**DUTCHMEN**

*Destinations*

# DUTCHMEN

*Discover the difference!*



Model  
3904RETS



# You've reached your DESTINATION!

Dutchmen Destinations offer the perfect combination of portable travel trailer and permanent summer cottage. Our use of natural materials like stone, glazed cabinetry woods, comfortable textiles, warm lighting, and soft textures and patterns, give off comfortable warmth and place you in a tranquil atmosphere.

Watch as the stresses of job and school simply evaporate from your family.



Model 3904RETS  
in Espresso





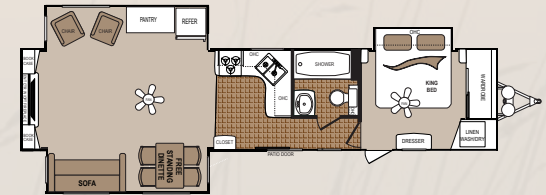
Model 3904RETS  
in Espresso



### 3902KBQS

Unloaded Weight (lbs) . . . 11,010  
Hitch Weight (lbs) . . . . . 1,604  
Cargo Capacity (lbs) . . . . . 2,190  
Overall Height w/AC . . . . 12' 7"  
Overall Length . . . . . 43' 10"

\*\*Fresh Water Capacity . . . 66  
Black Water Tank(s) . . . . . 76  
Grey Water Tank(s) . . . . . 114  
Awning Length . . . . . 21'  
Tire Size . . . . . ST225/75D15(D)



### 3904RETS

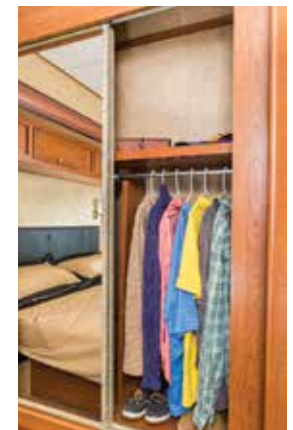
Unloaded Weight (lbs) . . . 9,694  
Hitch Weight (lbs) . . . . . 1,408  
Cargo Capacity (lbs) . . . . . 3,506  
Overall Height w/AC . . . . 12' 7"  
Overall Length . . . . . 40' 8"

\*\*Fresh Water Capacity . . . 66  
Black Water Tank(s) . . . . . 38  
Grey Water Tank(s) . . . . . 76  
Awning Length . . . . . 21'  
Tire Size . . . . . ST225/75D15(D)

\*\* Includes hot water heater



Model 3904RETS  
in Espresso



### Restful Bliss!

Bedrooms include a king-sized mattress with just the right blend of firmness and softness, under bed storage, linen closet with washer /dryer hookups, a huge wardrobe, a multi-drawer dresser, window valance with soft curtains, and TV hookup.



### Generous Storage!

Dutchmen offers loads of storage opportunities in every bedroom, bath and main living space, so you can relax and enjoy an uncluttered vacation.

# Dutchmen Destination Standards & Options

## EXTERIOR STANDARDS

Full Walk-On Roof  
Extra-Long Rain Gutters  
Patio Awning Prep  
Patio Light  
Sliding Patio Door  
Exterior Spray Port  
Front & Rear Stabilizer Jacks  
50 AMP Service  
65 AMP Convertor  
Detachable Power Cord  
(2) 30# LP Bottles w/Cover  
LP Quick Connect  
Detachable Tongue

## INTERIOR STANDARDS

### LIVING SPACE

Tri-Fold Hide-a-Bed Sofa  
(2) Ceiling Fans  
(2) Recliners in 3904  
Decorative Soft Curtain Package  
AM/FM/CD/DVD Player w/MP3 Connect  
2 Exterior & 4 Interior Speakers  
Central Utility Panel

## KITCHEN

U-Shaped Dinette  
High-Rise Faucet  
Sink Cover  
Oversized Pots & Pans Drawer  
Wide-Open Galley Cabinets  
Galley Rail  
Kitchen Soffits w/Puck Lighting

## BATH

27 IN x 54 IN Shower  
Residential Toilet  
Power Roof Vent in Bathroom

## BEDROOM

King Bed w/EverPedic® Mattress  
Bedsread & Headboard  
Woven Night Shades

## APPLIANCES

3-Burner High Output Range w/Oven  
Microwave  
Residential Refer  
Washer/Dryer Prep

## APPLIANCES (continued)

10 GAL Gas/Electric/DSI Water Heater  
HydroFlame® Furnace  
13.5 BTU Ducted AC  
2nd AC Prep  
Smoke Detector  
Carbon Monoxide Detector  
LP Leak Detector

## EXTERIOR OPTIONS

2-Tone F/G Package  
Spare Tire w/Carrier & Cover  
Patio Awning  
15M BTU AC IPO 13.5M BTU  
13.5M BTU Bedroom AC  
Tank Package (Includes: Grey & Black Holding Tanks, & Fresh Water Tank w/12 V Pump)

## INTERIOR OPTIONS

Freestanding Table w/4 Chairs  
Fireplace (STD 3904)  
40 IN LCD TV (STD 3904)

## FABRICS

TWILIGHT

SAND

ESPRESSO



Scan our quick response code to open our website, and explore the many products we have to offer!

Disclaimer: Product information is as accurate as possible as of the date of publication of this brochure. Features, floorplans and specifications are subject to change without notice. Please also consult our website for more current product information and specifications.

Tow Vehicle Disclaimer CAUTION: Owners of Dutchmen Manufacturing, Inc., recreational vehicles are solely responsible for the selection and proper use of tow vehicles. All customers should consult with a motor vehicle manufacturer or their dealer concerning the purchase and use of suitable tow vehicles for Dutchmen products. Dutchmen disclaims any liability or damages suffered as a result of the selection, operation, use or misuse of a tow vehicle. Dutchmen's limited warranty does not cover damage to the recreational vehicle or the tow vehicle as a result of the selection, operation, use or misuse of the tow vehicle.



PO BOX 2164 • 2164 Caragana Court  
Goshen, Indiana 46527  
Sales: 574.537.0600 • Fax: 574.975.0626

Your Local Dealer