



# BRECKENRIDGE®

## FINE LIFE™



FINE LIFE™

BRECKENRIDGE®



FL 1246CPG Shown in Cherry



Kitchens offer deluxe appliances, generous storage, tons of work-space, track lighting, distinctive seating in dining areas, & your choice of Richmond cherry or light maple cabinetry.  
FL-1246CPG Shown in Cherry



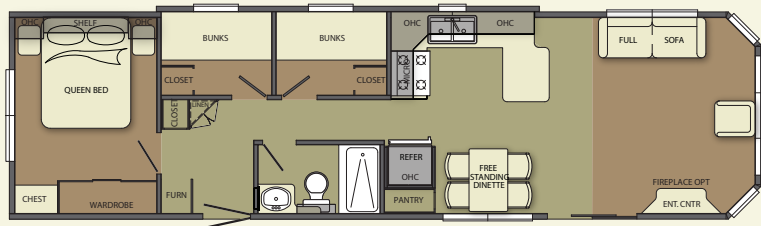
Baths include a porcelain residential toilet, single lever sink faucet, full-size, one-piece F/G tub/shower & recessed medicine cabinet.  
FL-CB Shown in Cherry

Breckenridge Fine Life is an entry-level, semi-permanent summer cottage that's geared toward younger families. Designed with kids in mind, it offers bunks, lofts and all sorts of great places they can call their own. As with all Breckenridge products, Fine Life boasts modern construction techniques coupled with quality building materials, including name brand household appliances, huge amounts of storage areas, and all the creature comforts of home.

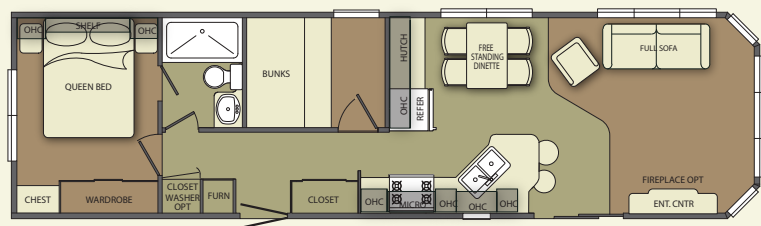


Bedrooms offer a comfortable Value Package queen sized memory-foam mattress w/box spring & frame, convenient side lighting & window valance w/soft curtains & blinds, & a chest of drawers & wardrobe in most F/Ps.  
FL-1246CPG Shown in Cherry

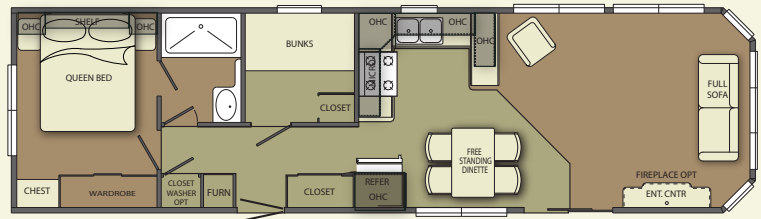
# **BRECKENRIDGE** FINE LIFE™ FLOORPLANS



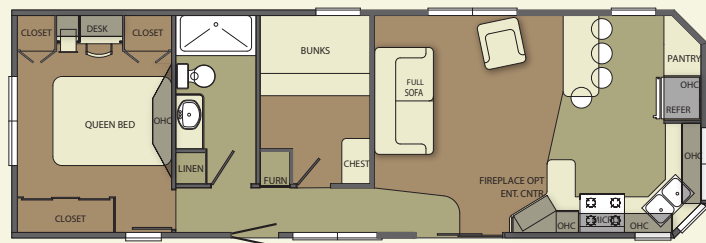
FL-12463BR (12' X 42' BOX)



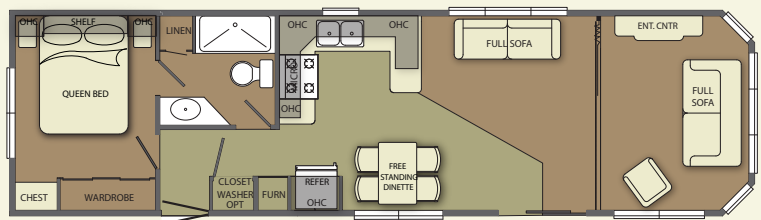
FL-1246FL (12' X 42' BOX)



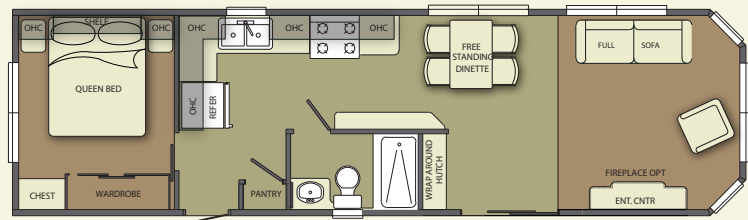
FL-1246CPG (12' X 42' BOX)



FL-1443FK (14' X 39' BOX)



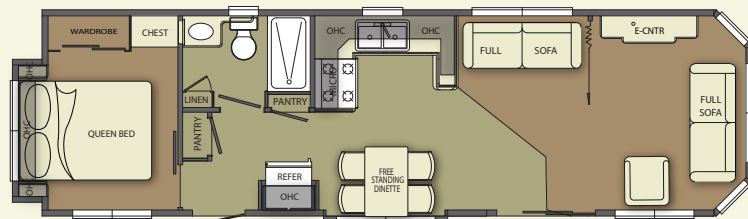
FL-1246DB2 (12' X 42' BOX)



FL-CB (12' X 37' BOX)



FL-1246FKMS (12' X 42' BOX)



FL-FDB (12' X 37' BOX)



**FINE LIFE™**

#### STANDARD FEATURES

- 6'-4" Entry Door Heights
- High Efficiency, Electronic Ignition, 55,000 BTU Upright or 40,000 BTU Under Counter Furnace\*, w/In-Floor Registers
- Fiberglass Insulation
- Vented Attic & Soffit
- Water Heater Bypass Kit
- Prep for A/C
- Gas Lines Run to Both Ends

#### HEAVY DUTY EXTERIOR CONSTRUCTION FEATURES:

- Double 2 x 6 Floor Perimeter Joists
- Vinyl Siding w/Limited Lifetime Warranty
- Wide Aluminum Roof Edge Fascia
- Non-Corrosive One Piece Underbelly
- Detachable Hitch
- 6" Exterior Soffit All Around

#### HEAVY DUTY INTERIOR CONSTRUCTION FEATURES:

- All Wood Construction Cabinets
- Sealed Decking at Entry Doors & Plumbing Locations
- Double 30x58 Windows at Bedroom Back Wall\*
- Cathedral Ceiling Throughout

#### DECORATOR FEATURES:

- Decorator Glass China Cabinets\*
- Mirrored Wardrobe Doors
- Chandelier in Dining Room
- Track Lighting in Kitchen\*
- Plush Style Carpet w/High Density Carpet Pad
- Decorator Window Coverings
- Vertical Blind at Patio Door
- Large Mirror w/Light Bar at Vanity
- Recessed Mirrored Medicine Cabinet in Bath
- Metal Mini Blinds Throughout
- Decorative Headboard
- 2 Night Stands or Shelves
- Wall Mount Lamps in Bedroom
- Deluxe Bunk Bedding

#### CONVENIENCE FEATURES:

- Patio Light at Both Entry Doors
- Dead Bolt Lock on Rear Door
- Designer Roll Good Floors in Kit/Dining, Bath, Main & Rear Entrance\*
- Residential Kitchen Sink (Stainless Steel) Lever Faucet w/Pull Out Sprayer
- Porcelain Residential Toilet
- Entertainment Center w/China Cabinet \*
- Exterior GFCI Receptacle
- Phone Jack
- Full-Extension Ball Bearing Drawer Guides
- Bunk Rail & Ladder
- CSA Z241 Coded, Seal Included

#### VALUE BY DESIGN PACKAGE:

##### Included Features:

- Vinyl, Thermo Pane, Tilt & Clean, Single Hung Windows
- Aluminum Thermo Pane Patio Door
- Full Sofa w/Throw Pillows & Air Bed
- Swivel Rocker Living Room Chair
- Rectangular Hardwood Dinette & 4 Chairs w/In-Seat Storage
- Residential Queen Memory Foam Bed w/Box Spring & Frame
- Queen Bedspread, Pillows Shams & Pillows
- Hardware Framed Cabinet Doors & Drawer Fronts
- 18 CuFt Black Frost Free Refrigerator w/Ice Maker
- 30" Deluxe Black Range w/Electronic Ignition
- 30" Black Space Maker Microwave
- 16 Gal. Gas/Electric Water Heater w/DSI
- 50 AMP Electrical Service
- Fold Down Sink Tray
- One-Piece Fiberglass Tub/Shower
- Vaulted Ceiling
- 2 x 4 Sidewall Construction – 16" O.C.
- 2 x 6 Floor Construction – 16" O.C.
- Steel I-Beam Frame
- Full Width 5/8" Floor Decking
- 30 Year Architectural Shingles
- 40# Trussed Roof Rafters – 16" O.C.
- 6-Panel Passage Doors

#### POPULAR OPTIONS

- Shutters
- Ceiling Fan w/Light Kit
- AM/FM/DVD/CD Stereo w/Surround Sound Capability
- Skylight(s)
- Electronic Fireplace\*
- Cold Weather Package

\* - Not Available in Some Models

Due to constant product improvements, the equipment, specifications, component parts, and standard/optional equipment are subject to change without notice or obligation. Product photography or diagrams may show equipment that is optional. Breckenridge Corporation reserves the right to make changes in prices, and models, and to discontinue models without notice or obligation.

# 1 BRAND IN DESTINATION CAMPING FOR MORE THAN 15 YEARS

WWW.BRECKENRIDGEFINERLIVING.COM

800-223-2376



© 2013 BRECKENRIDGE, ALL RIGHTS RESERVED, PRINTED IN U.S.A.

Breckenridge products meet or exceed the required RVIA code. Most models are available with CSA approval. The photographs in this product literature show Breckenridge standard items and feature some of the many Breckenridge options.

For Additional Information Contact:

