



BRECKENRIDGE®

PERFECT COTTAGE™



PC 1246CPG Shown in Cherry

PERFECT COTTAGE™

BRECKENRIDGE®





Perfect Cottage kitchens feature generous storage, your choice of Richmond cherry or light maple cabinetry w/concealed door hinges & optional solid surface countertops. PC 1246CPG Shown in Cherry

Breckenridge offers your family the perfect summer cottage for total relaxation. Perfect Cottage is an upgraded destination trailer built for seasoned park model customers. It offers modern construction techniques coupled with quality building materials, including name brand household appliances, huge amounts of storage areas, and all the creature comforts of home. Perfect Cottage is a premier second home, offering considerable luxury for the money.



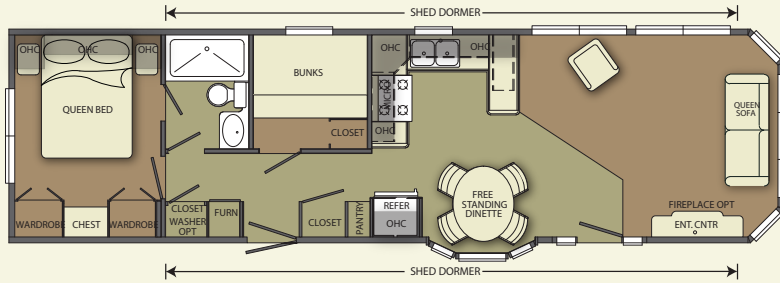
Baths include a porcelain residential toilet, single lever sink faucet, a large vanity mirror w/light bar & recessed medicine cabinet. PC 1246DB2 Shown in Cherry



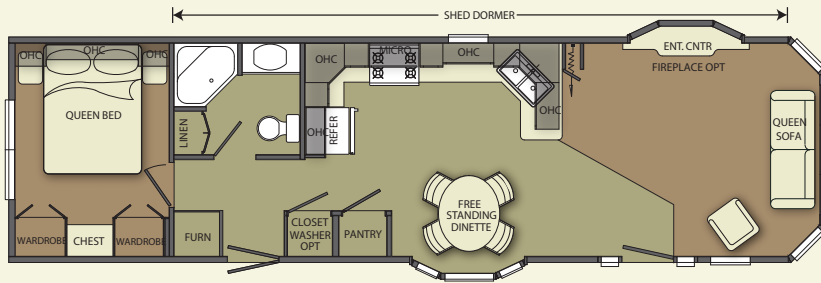
Bedrooms offer tons of storage, comfortable queen sized memory-foam mattress w/box spring & frame, convenient swing-arm side lighting & window valance w/soft curtains & blinds. PC 1246DB2 Shown in Cherry



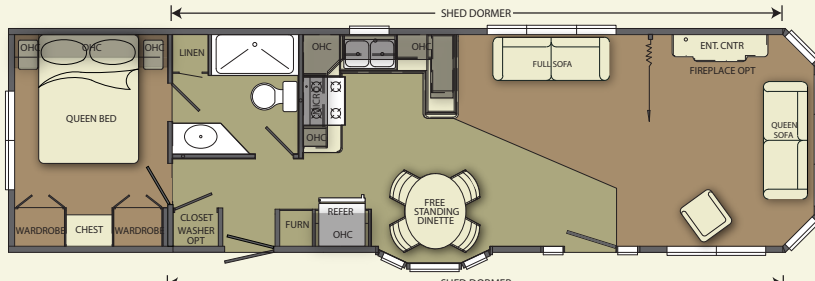
PERFECT COTTAGE™ FLOORPLANS



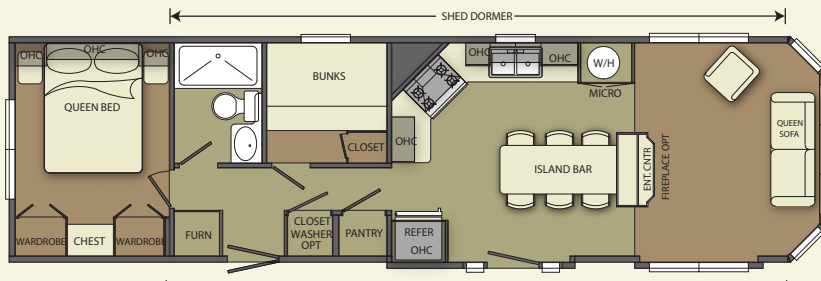
PC-1246CPG (12' X 42' BOX)



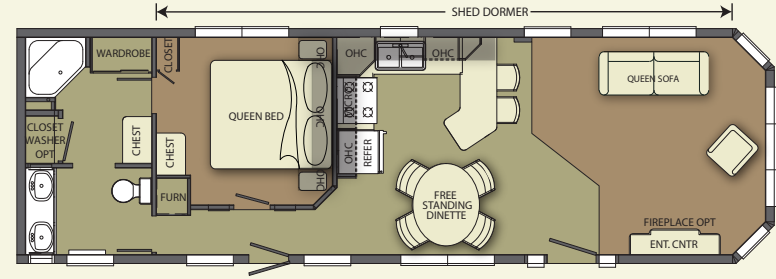
PC-1246CR (12' X 42' BOX)



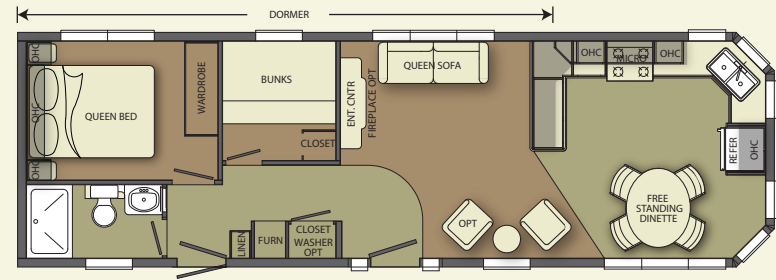
PC-1246DB2 (12' X 42' BOX)



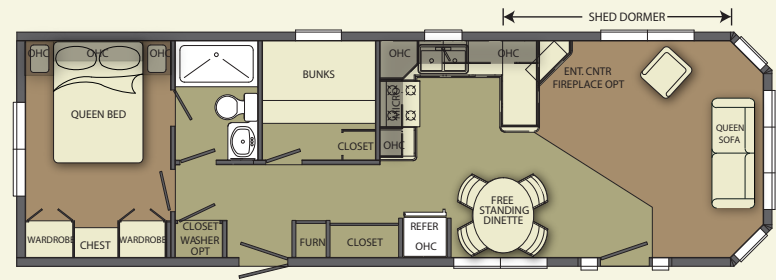
PC-1246IK (12' X 42' BOX)



PC-1445CS (14' X 41' BOX) 2" X 6" WALLS & FLOORS



PC-1445FK (14' X 41' BOX) 2" X 6" WALLS & FLOORS



PC-1445FL (14' X 41' BOX) 2" X 6" WALLS & FLOORS



BRECKENRIDGE®

PERFECT COTTAGE™

STANDARD FEATURES

- 6'-4" Entry Door Heights
- High Efficiency, Electronic Ignition, 55,000 BTU Upright Furnace
- Vented Attic & Soffits
- Water Heater Bypass Kit
- Prep for Under Unit A/C
- Gas Lines to Both Ends

HEAVY DUTY EXTERIOR CONSTRUCTION FEATURES:

- Double 2 x 6 Floor Perimeter Joists
- Laminated Beam Headers over All Major Wall Openings
- Dadoed Perimeter Belt Rails for Greater Sidewall Strength
- Vinyl Siding w/Lifetime Limited Warranty
- Wide Roof Edge Fascia Molding
- Removable Hitch
- Metal (Rodent Proof) Underbelly*
- 30-Year Architectural Shingles
- Cathedral Truss Roof Rafters - 16" O.C.
- Ice Guard Total Roof Treatment

HEAVY DUTY INTERIOR CONSTRUCTION FEATURES:

- Waterproofed at Entry Doors & Plumbing Locations
- Double Window in Bedroom Back or Side Wall
- Lined O/H Cabinets
- Raised Hardwood Cabinet Doors & Drawer Fronts w/Concealed Hinges
- Full Width 5/8" Floor Decking
- 2 x 4 Sidewall & 2 x 6 Floor Construction All 12' Wide
2 x 6 Sidewall & 2 x 6 Floor Construction All 14' Wide

DECORATOR FEATURES:

- Mirrored Doors on Hall Closet*
- Fluted Glass China Cabinets w/Interior Lights*
- Premium Chandelier in Dining Room
- Mullions at All Windows (Grids)
- Track Lighting in Kitchen *
- Cottage Style Patio Light at Both Entry Doors
- Plush Style Carpet w/High Density Carpet Pad
- Beveled Wood Edged Kitchen & Bath Countertops w/Backsplash
- Vertical Blind w/Valance at Patio Door
- Day Shades on All Windows
- Large Vanity Mirror w/Light Bar & Recessed Medicine Cabinet in Bath
- Queen Sofa w/Air-Bed, Throw Pillows
- Rocker/Recliner
- Oval Hardwood Dinette Table & 4 Chairs w/In-Seat Storage
- Ceiling Fan in Living Room w/Light
- Residential Queen Memory Foam Bed w/Box Spring & Metal Frame
- Queen Bedspread w/Shams & Pillows

CONVENIENCE FEATURES:

- Designer Roll Good Floors in Kitchen, Main & Rear Entrance Hall & Bath
- Single Lever Faucets in Bath
- Porcelain House Type Toilet
- Entertainment Center
- Lighted Overhead China Cabinet*
- Exterior GFCI 110 Volt Receptacle
- CSA Z-241 Certified & Inspected
- Full-Extension Drawer Guides

VALUE BY DESIGN PACKAGE:

Included Features:

- Low-E, Vinyl, Thermo Pane, Tilt & Clean, Single Hung Windows w/Grids
- Residential Style Back Door w/Screen
- Hardwood Chair Rail in Living Room
- All Wood Cabinet Construction, Including Plywood Drawers w/Ball Bearing Full Extension Guides
- 18 CuFt Black Frost Free Refrigerator w/Ice Maker
- 30" Black Deluxe Range w/Electronic Ignition
- 30" Black Space Maker Microwave
- Breakfast Bar & 2 Bar Stools*
- 16 Gal. Gas/Electric Water Heater w/DSI
- 50 AMP Electrical Service
- Washer/Dryer Prep
- Fold Out Sink Tray & Lazy Susan in Kitchen
- Cutlery Drawer & Cutting Board in Kitchen
- One Piece Fiberglass Tub/Shower
- Residential Style Steel Entry Door w/2-Side Light Windows
- 6-Panel Woodgrain Passage Doors
- Formaldehyde Free Fiberglass Insulation
- 1246's Insulation Values: (2x4 Wall & 2x6 Floor Construction)
R-19 Floors
R-19 Ceilings
R-17.3 Side Walls
- 1445's Insulation Values: (2x6 Wall & 2x6 Floor Construction)
R-19 Floors
R-30 Ceilings
R-25.2 Side Walls
- Hardwood Crown Mouldings@Ceiling in Living Room & Kitchen
- Hardwood Crown Mouldings on Kitchen Overhead Cabinets

- All Wood Cabinet Construction
- Wardrobe w/Chest Of Drawers & TV Hook-Up in Master Bedroom
- Deep Bowl Stainless Steel Kitchen Sink
- Single Handle Pullout Kitchen Faucet
- Residential Style Interior Decors
- Queen Bedspread, Pillow Shams & Pillows
- Shower Doors
- Bunk Spread & Ladder*

POPULAR OPTIONS

- Metal Roof
- Flat Screen TVs
- Second & Third Paddle Fan
- Washer/Dryer*
- Skylight(s)
- Electronic Fireplace
- Stainless Steel Appliances
- Wainscoting
- Clay Window, Door & Trim Package
- Vinyl Thermo Pane Patio Door
- Premium Vinyl Siding Colors
- Distinct Exterior Siding Designs
- Premium Home Theater System
- Solid Surface Countertops w/Integrated Sinks & Hi Rise Faucet

* - Not Available in Some Models

Due to constant product improvements, the equipment, specifications, component parts, and standard/optional equipment are subject to change without notice or obligation. Product photography or diagrams may show equipment that is optional. Breckenridge Corporation reserves the right to make changes in prices, and models, and to discontinue models without notice or obligation.

#1 BRAND IN DESTINATION CAMPING FOR MORE THAN 15 YEARS

WWW.BRECKENRIDGEFINERLIVING.COM

800-223-2376



© 2013 BRECKENRIDGE, ALL RIGHTS RESERVED, PRINTED IN U.S.A.

Breckenridge products meet or exceed the required RVIA code. Most models are available with CSA approval. The photographs in this product literature show Breckenridge standard items and feature some of the many Breckenridge options.

For Additional Information Contact:

