



BRECKENRIDGE®

PERFECT COTTAGE™



PC FTDL Shown in Light Maple

PERFECT COTTAGE™

BRECKENRIDGE®





Perfect Cottage kitchens feature generous storage, your choice of Richmond cherry or light maple cabinetry w/concealed door hinges & optional solid surface countertops.
PC CKLT Shown in Cherry



Bedrooms offer tons of storage, comfortable queen sized memory-foam mattress w/box spring & frame, convenient swing-arm side lighting & window valance w/soft curtains & blinds.
PC CKLT Shown in Cherry

Breckenridge has your family covered when it comes to semi-permanent summer cottage and resort relaxation. Perfect Cottage is an upgraded destination trailer built for seasoned park model customers. It offers modern construction techniques coupled with quality building materials, including name brand household appliances, huge amounts of storage areas, and all the creature comforts of home. Perfect Cottage is a premier second home, offering considerable luxury for the money.



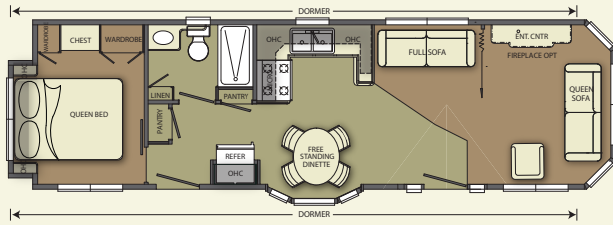
Kitchens include track lighting, hardwood dinette table & chairs w/in-seat storage, deluxe appliances, generous storage & tons of workspace.
PC FDB Shown in Light Maple



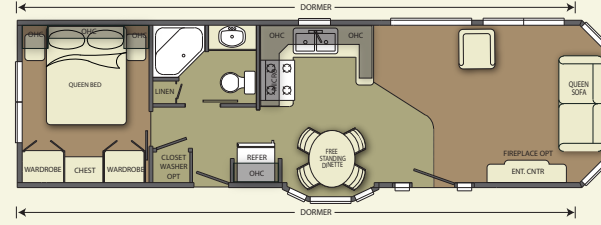
BRECKENRIDGE®

PERFECT COTTAGE™

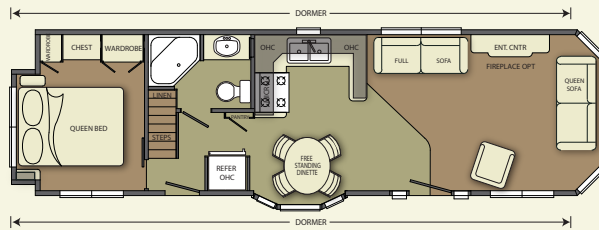
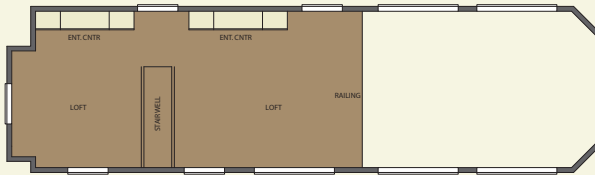
FLOORPLANS



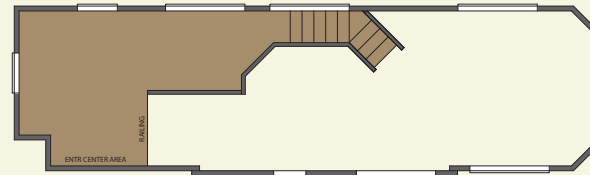
PC-FDB



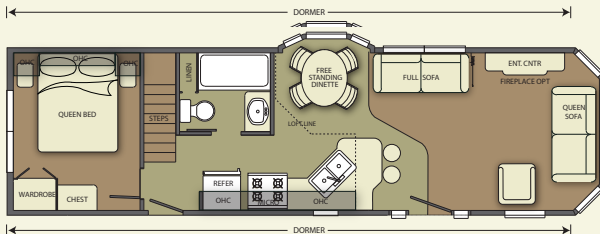
PC-PG



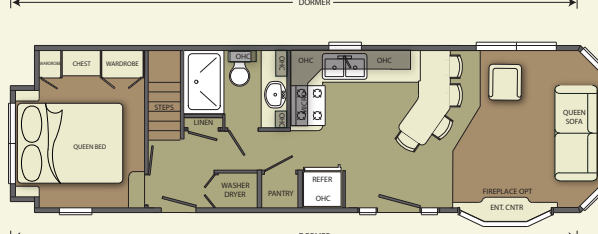
PC-DBDL (ALSO AVAILABLE IN TALL)



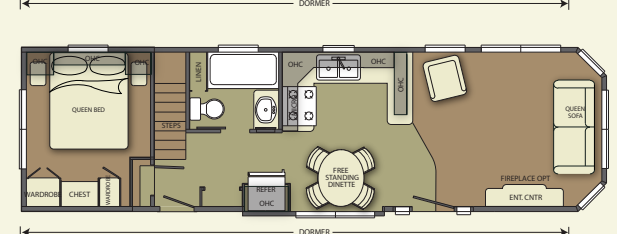
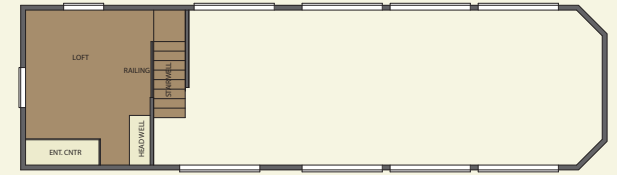
PC-CKLT



PC-DLT



PC-FTDL



PC-PGDL

STANDARD FEATURES

- 6'-4" Entry Door Heights
- 40,000 BTU Under Counter Furnace
- Vented Attic & Soffits
- Water Heater Bypass Kit
- Prep for Under Unit A/C
- Gas Lines at Both Ends

HEAVY DUTY EXTERIOR CONSTRUCTION FEATURES:

- Ice Guard Total Roof Treatment
- Double 2 x 6 Floor Perimeter Joists
- Laminated Beam Headers over All Major Wall Openings
- Dadoed Perimeter Belt Rails for Greater Sidewall Strength
- Vinyl Siding w/Lifetime Limited Warranty
- Wide Roof Edge Fascia Molding
- Removable Hitch
- Metal (Rodent Proof) Underbelly
- 30 Year Architectural Shingles
- Cathedral Truss Roof Rafters - 16" O.C. (30 P.S.F.)
- Full Length Shed Dormers on Both Sides

HEAVY DUTY INTERIOR CONSTRUCTION FEATURES:

- Waterproofed at Entry Doors & Plumbing Locations
- Double Window in Bedroom Back or Side Wall
- Lined O/H Cabinets
- Raised Hardwood Cabinet Doors & Drawer Fronts w/Concealed Hinges

- Full Width 5/8" Plywood Floor Decking
- 2 x 4 Sidewall & 2 x 6 Floor Construction All 16" O.C.

DECORATOR FEATURES:

- Shower Doors
- Fluted Glass China Cabinets w/Interior Lights*
- Premium Chandelier in Dining Room or Pendant Lights
- Mullions at All Windows (Grids)
- Track Lighting in Kitchen *
- Cottage Style Patio Light at Both Entry Doors
- Plush Style Carpet w/High Density Carpet Pad
- Beveled Wood Edged Kitchen & Bath Countertops w/Backsplash
- Day Shades on All Windows
- Large Vanity Mirror w/Light Bar & Recessed Medicine Cabinet in Bath*
- Queen Sofa w/Air-Bed & Throw Pillows
- Rocker Recliner
- Hardwood Dinette Table & 4 Chairs w/In-Seat Storage
- Ceiling Fan in Living Room w/Light
- Residential Queen Memory Foam Mattress w/Box Spring & Frame

CONVENIENCE FEATURES:

- ANSI Construction, Fire, Health & Safety Code & Inspection
- Designer Roll Good Floors in Kitchen, Main & Rear Entrance Hall & Bath
- Single Lever Faucets in Bath
- Porcelain House-Type Toilet
- Entertainment Center
- Lighted Overhead China Cabinet*
- Exterior GFCI 110 Volt Receptacle

VALUE BY DESIGN PACKAGE:

Included Features:

- Low-E, Vinyl, Thermo Pane, Tilt & Clean, Single Hung Windows
- Residential Style Back Door w/Screen
- Hardwood Chair Rail in Living Room
- 18 CuFt Black Frost Free Refrigerator w/Ice Maker
- 30" Deluxe Black Range w/Electronic Ignition
- 30" Space Maker Microwave
- Breakfast Bar & 2 Bar Stools*
- 16 Gal. Gas/Electric Water Heater w/ DSI
- 50 Amp Electrical Service
- Fold Out Sink Tray & Lazy Susan in Kitchen
- Cutlery Drawer & Cutting Board in Kitchen
- One Piece Fiberglass Tub/Shower
- Residential Type Steel Entry Door w/2-Side Light Windows
- 6-Panel Woodgrain Passage Door
- Formaldehyde Free Fiberglass Insulation
- Insulation Values:
 - R-19 Floors
 - R-19 Ceilings
 - R-17.3 Side Walls
- Hardwood Crown Mouldings@Ceiling in Living Room & Kitchen
- Hardwood Crown Mouldings on Kitchen Overhead Cabinets
- All Wood Cabinet Construction
- Plywood Cabinet Drawers w/Full Extension Ball Bearing Guides
- Wardrobe w/Chest of Drawers & TV Hook-Up in Master Bedroom*
- Deep Bowl Stainless Steel Kitchen Sink
- Single Handle Pullout Kitchen Faucet

- Residential Style Interior Decors
- Queen Bedspread, Pillow Shams & Pillows

POPULAR OPTIONS

- Solid Surface Countertops in Galley w/Integrated Sinks & Hi Rise Faucet
- Metal Roof
- Flat Screen TVs
- Second & Third Paddle Fan
- Washer/Dryer*
- Electronic Fireplace
- Stainless Steel Appliances
- Wainscoting
- Clay Window, Door & Trim Package
- Vinyl Thermo Pane Patio Door
- Premium Vinyl Siding Colors
- Distinct Exterior Siding Designs
- Premium Home Theater System

* - Not Available in Some Models

CSA Z-241 Available on Some Models

Due to constant product improvements, the equipment, specifications, component parts, and standard/optional equipment are subject to change without notice or obligation. Product photography or diagrams may show equipment that is optional. Breckenridge Corporation reserves the right to make changes in prices, and models, and to discontinue models without notice or obligation.

1 BRAND IN DESTINATION CAMPING FOR MORE THAN 15 YEARS

WWW.BRECKENRIDGEFINERLIVING.COM

800-223-2376



© 2013 BRECKENRIDGE, ALL RIGHTS RESERVED, PRINTED IN U.S.A.

Breckenridge products meet or exceed the required RVIA code. Most models are available with CSA approval. The photographs in this product literature show Breckenridge standard items and feature some of the many Breckenridge options.

For Additional Information Contact:

